

SCOPE OF WORK

The project is for building a new 30,000 square foot warehouse and a 1880 square foot double bunker salt storage building.

The demolition of the existing salt storage building and construction of the new Salt Storage Shed is included in the overall project Construct New Warehouse.

SALT SHED

510 BUTLER AVENUE

Date: 07/06/2015

Owner: VAMC MARTINSBURG

WORK SITE

NEW WAREHOUSE

Architect: VAMC Martinsburg

ARCHITECTURAL DRAWING INDEX

Sheet List Table

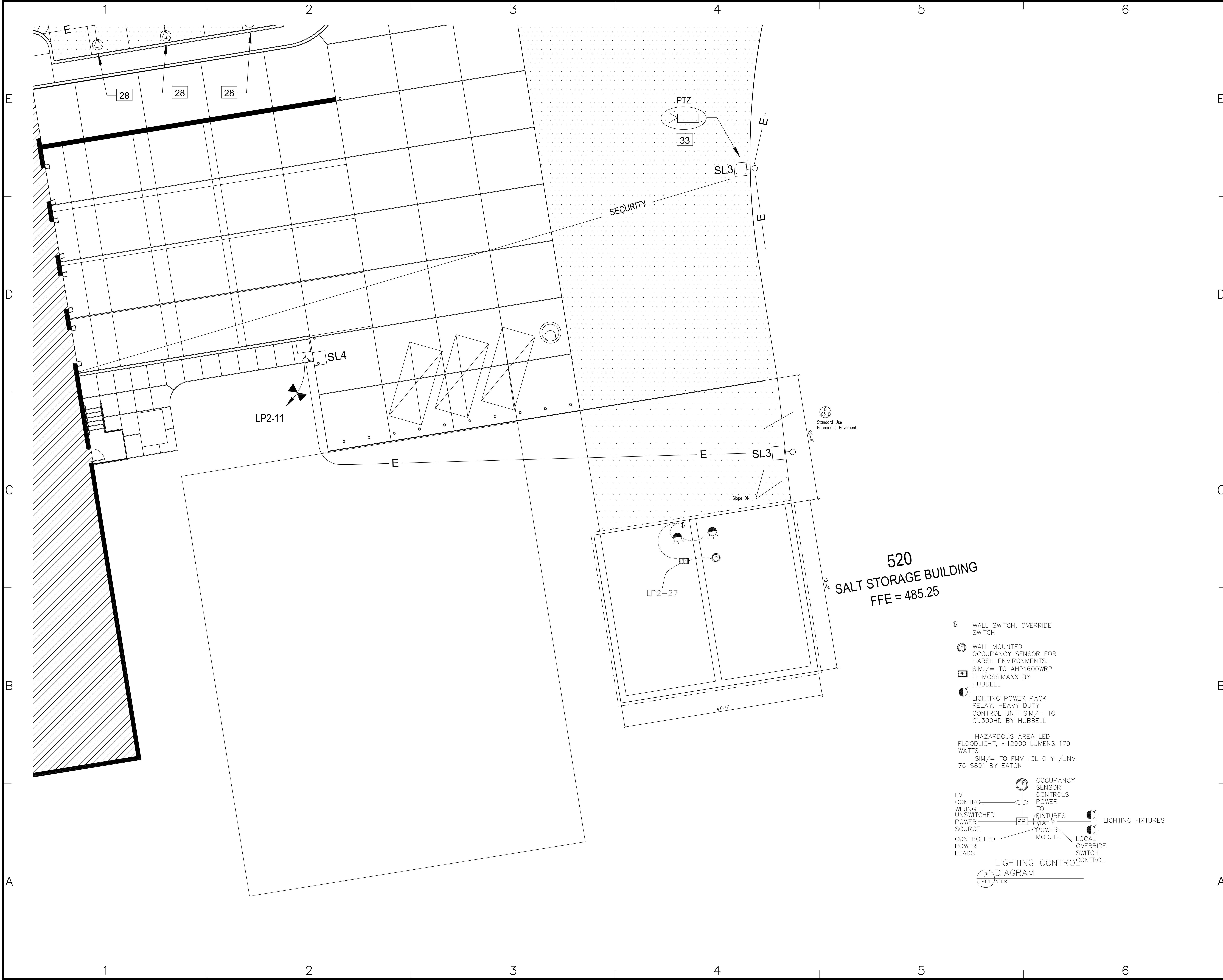
Sheet Number	Sheet Title
General	
G-100	Cover Sheet
Architectural: General	
A-100	Site Plan
Architectural: Plans	
A-101	Foundation and Framing Plans
A-102	Roof Framing and Roof Plans
Architectural: Elevations	
A-201	Building Elevations
Architectural: Sections	
A-301	Building Section South-North
A-302	Building Section West-East
A-303	North South Section - Interior Wall Elevation
Architectural: Details	
A-501	Details
A-502	Details
A-503	Details Rebar
A-504	Detail Rebar

ARCHITECT

GENERAL CONTRACTOR

MEP CONSULTANTS

ISSUE DATES



- \$ WALL SWITCH, OVERRIDE SWITCH
- WALL MOUNTED OCCUPANCY SENSOR FOR HARSH ENVIRONMENTS. SIM./= TO AHP1600WRP H-MOSSIMAXX BY HUBBELL
- LIGHTING POWER PACK RELAY, HEAVY DUTY CONTROL UNIT SIM./= TO CU300HD BY HUBBELL
- HAZARDOUS AREA LED FLOODLIGHT, ~12900 LUMENS 179 WATTS SIM./= TO FMV 13L C Y /UNV1 76 SB91 BY EATON
- LV CONTROL WIRING UNSWITCHED POWER SOURCE CONTROLLED POWER LEADS
- OCCUPANCY SENSOR CONTROLS POWER TO FIXTURES VIA POWER MODULE
- LIGHTING FIXTURES
- LOCAL OVERRIDE SWITCH CONTROL
- LIGHTING CONTROL DIAGRAM
- 3 E1.1 N.T.S.

CONSULTANTS

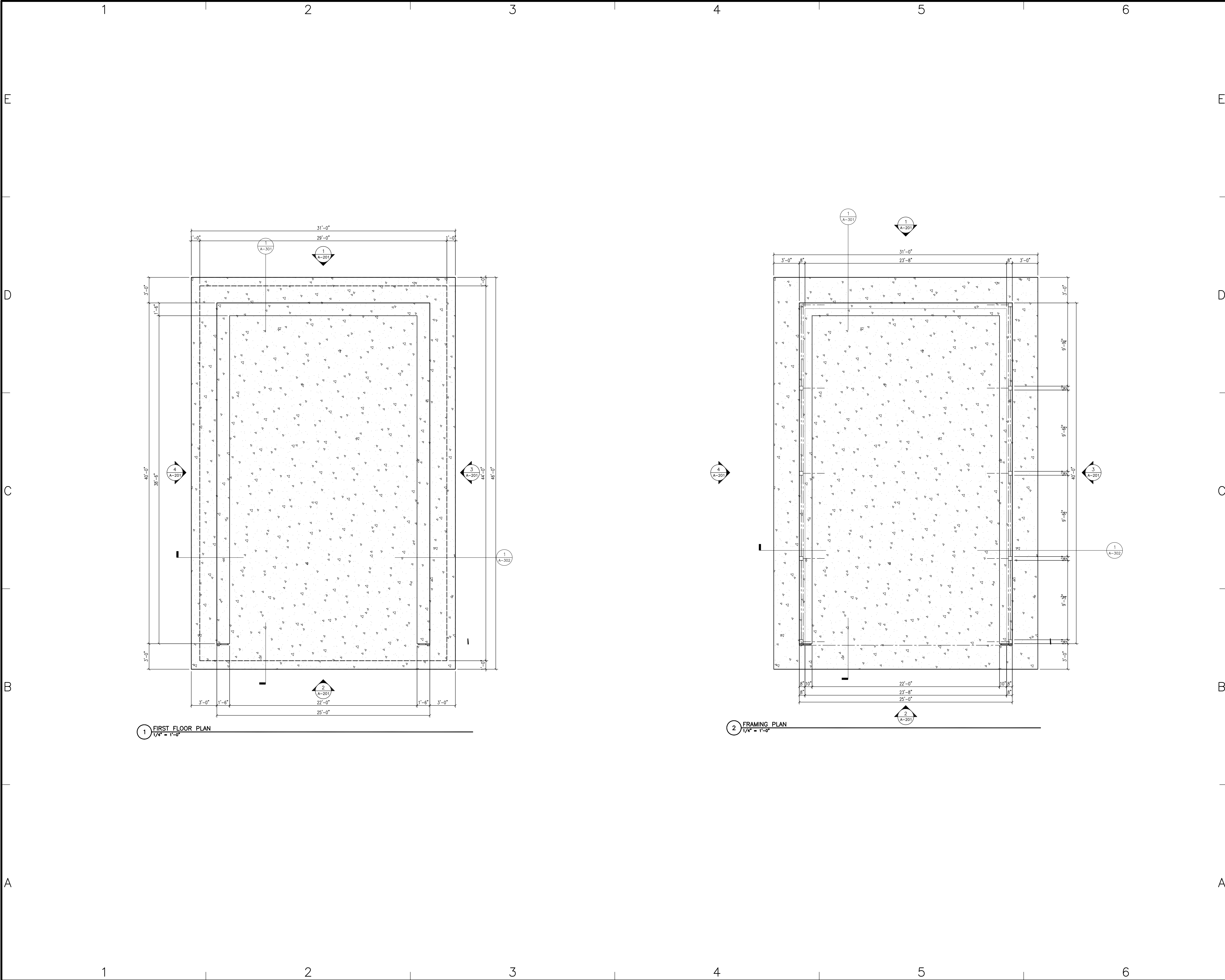
SALT SHED
510 BUTLER AVENUE
OWNER
VAMC MARTINSBURG

VAMC, MARTINSBURG

Department of Veterans Affairs

MARK	DATE	DESCRIPTION
PROJECT NO:	613-116	
CAD DWG FILE:	A-100 SITE PLAN.DWG	
DRAWN BY:	SP	
CHK'D BY:	-	
VAMC, MARTINSBURG WV		
SHEET TITLE		
SITE PLAN		
A-100		
SHEET	2	OF 12

C:\USERS\BAPOWELL\MY DOCUMENTS\VA FILES\WAREHOUSE_NEW\SALT SHED\DRAWINGS_CAD\SALT SHED\SALT SHED\SHEETS\A-100 SITE PLAN.DWG



CONSULTANTS

OWNER

SALT SHED
510 BUTLER AVENUE
VAMC MARTINSBURG

VAMC, MARTINSBURG

Department of Veterans Affairs

MARK	DATE	DESCRIPTION

PROJECT NO: ----

CAD DWG FILE: A-101 SLAB AND FOUNDATION PLAN

DRAWN BY: --

CHK'D BY: --

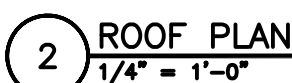
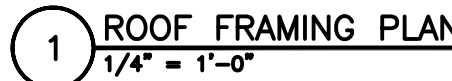
VAMC, MARTINSBURG WV

SHEET TITLE

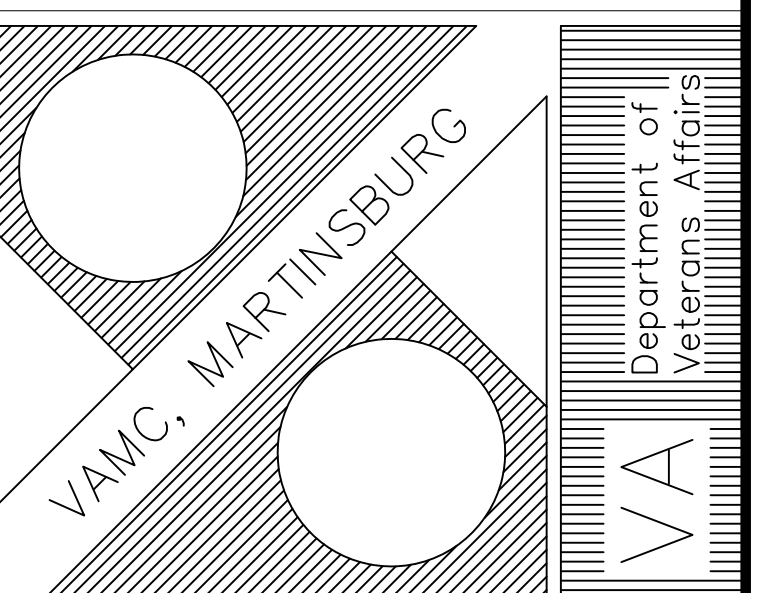
FOUNDATION AND FRAMING PLANS

A-101

SHEET - OF -



SALT SHED
510 BUTLER AVENUE
VAMC MARTINSBURG



MARK	DATE	DESCRIPTION

PROJECT NO:	613-116
CAD DWG FILE:	A-102 ROOF FRAMING AND ROOF PLANS.DWG
DRAWN BY:	SP

VAMC, MARTINSBURG WV

SHEET TITLE
ROOF FRAMING AND ROOF PLANS

A-102

E

D

C

B

A

E

D

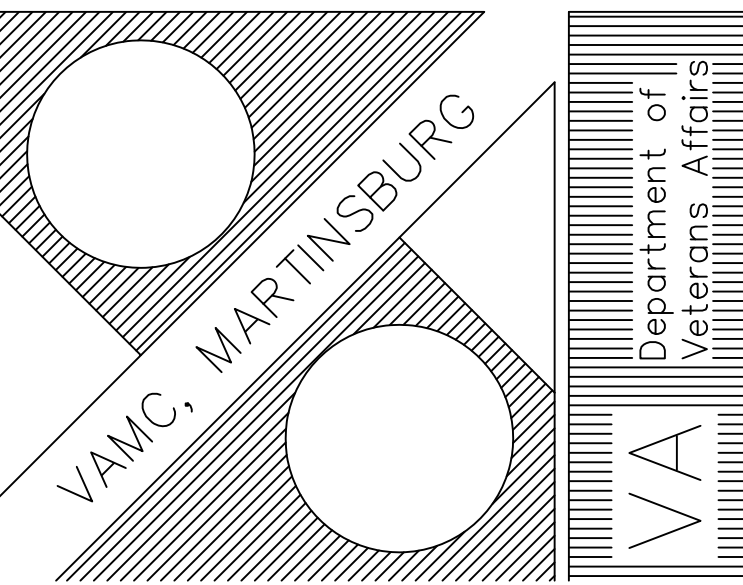
C

B

A

CONSULTANTS

SALT SHED
510 BUTLER AVENUE
OWNER
VAMC MARTINSBURG



MARK	DATE	DESCRIPTION

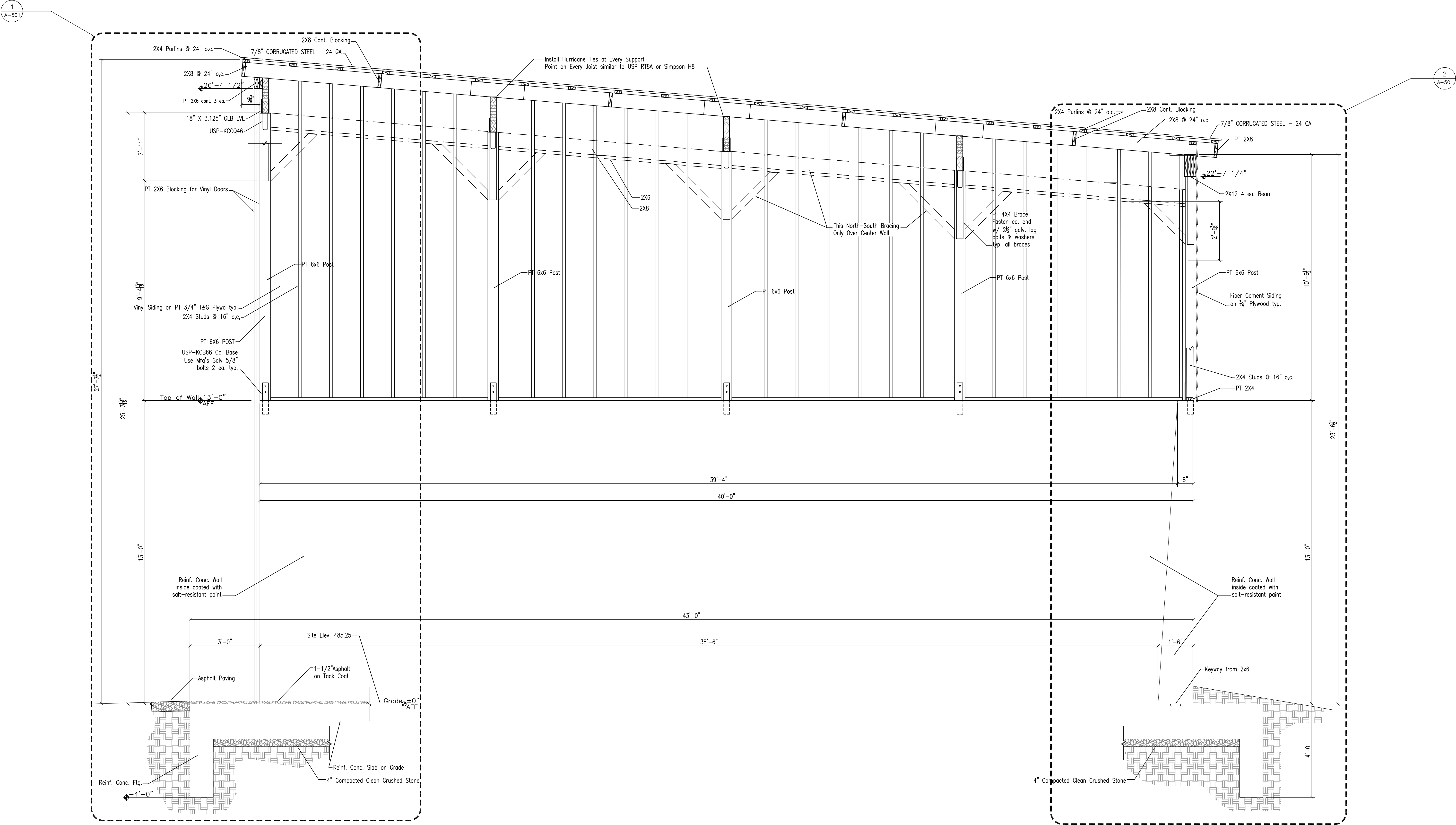
PROJECT NO: 613-116
CAD DWG FILE: A-301 BUILDING SETS.DWG
DRAWN BY: SP
CHK'D BY: -

VAMC, MARTINSBURG WV

SHEET TITLE
BUILDING SECTION
SOUTH-NORTH

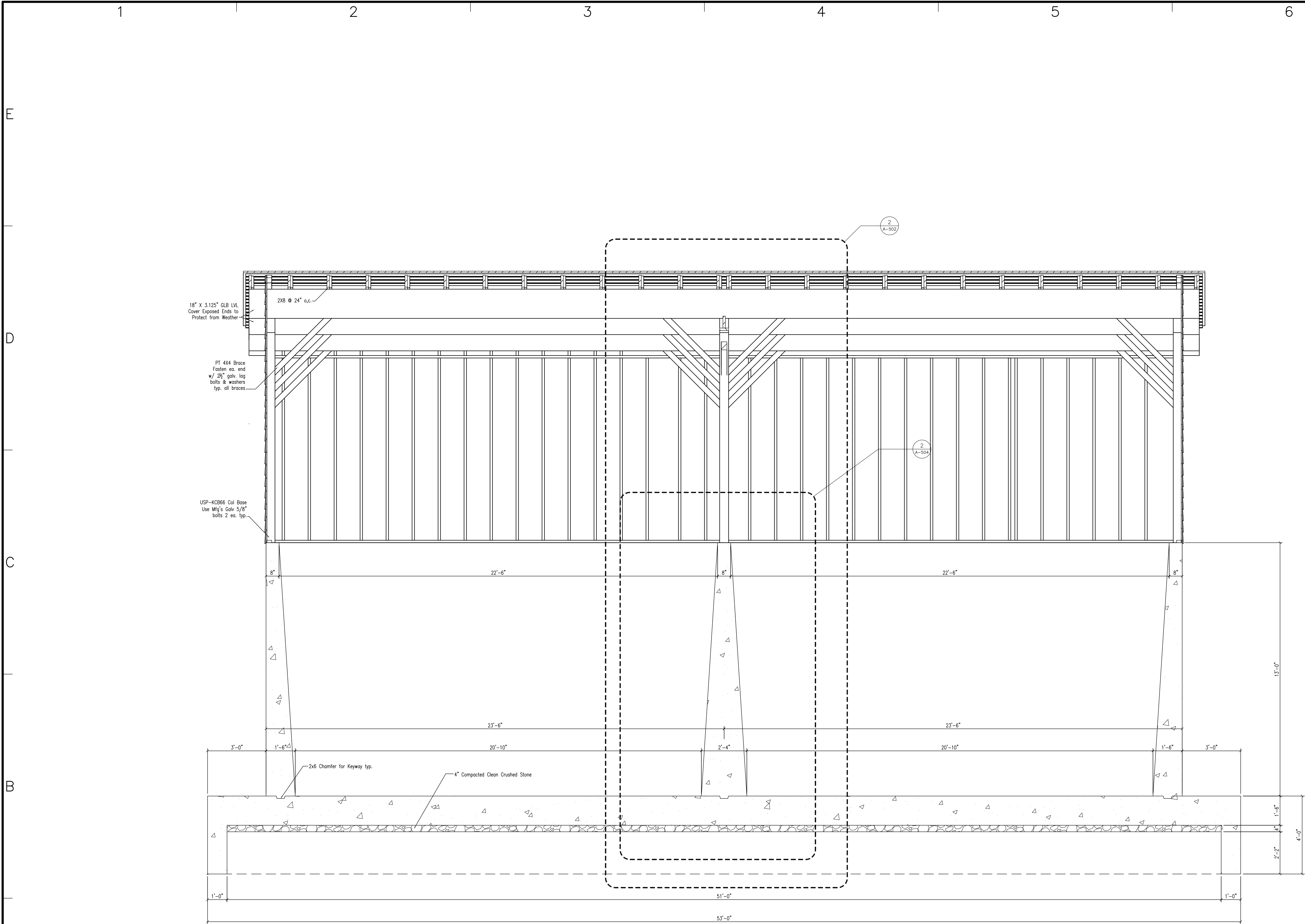
A-301
SHEET 6 OF 12

C:\USERS\SAMPWELLY\MY DOCUMENTS\VA FILES\WAREHOUSE_NEW\SALT SHED\DRAWINGS\DWG\SALT SHED\SALT SHED\SHEET\A-301 BUILDING SETS.DWG



1 TRANSVERSE BUILDING SECTION
1/2" = 1'-0"

Salt Resistant Paint: High Build Epoxy Marine Coating
Acceptable products:
Macropoxy 546 Fast Cure by Sherwin Williams
Amerlock 400 by PPG
Polyamide Epoxy Semi-Gloss by Benjamin Moore
Acceptable equal.



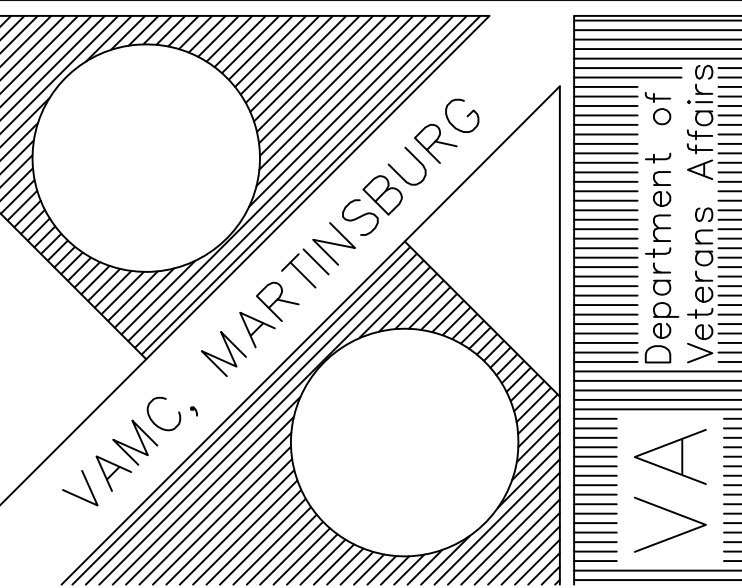
1 WEST EAST BUILDING SECTION
1/2" = 1'-0"

CONSULTANTS

SALT SHED
510 BUTLER AVENUE

OWNER

VAMC MARTINSBURG



PROJECT NO: 613-116
CAD DWG FILE: A-302 BUILDING SECTION WEST-EAST.DWG
DRAWN BY: SP
CHK'D BY: -

VAMC, MARTINSBURG WV

SHEET TITLE
BUILDING SECTION
WEST-EAST

A-302

SHEET 7 OF 12
C:\USERS\GAWP\PROJECTS\613-116\613-116_VA_FILES\WDR\WDR_1000\SALT SHED\DRAWINGS_GAO\SALT SHED\SALT SHED\SHEETS\A-302 BUILDING SECTION WEST-EAST.DWG

E

D

C

B

A

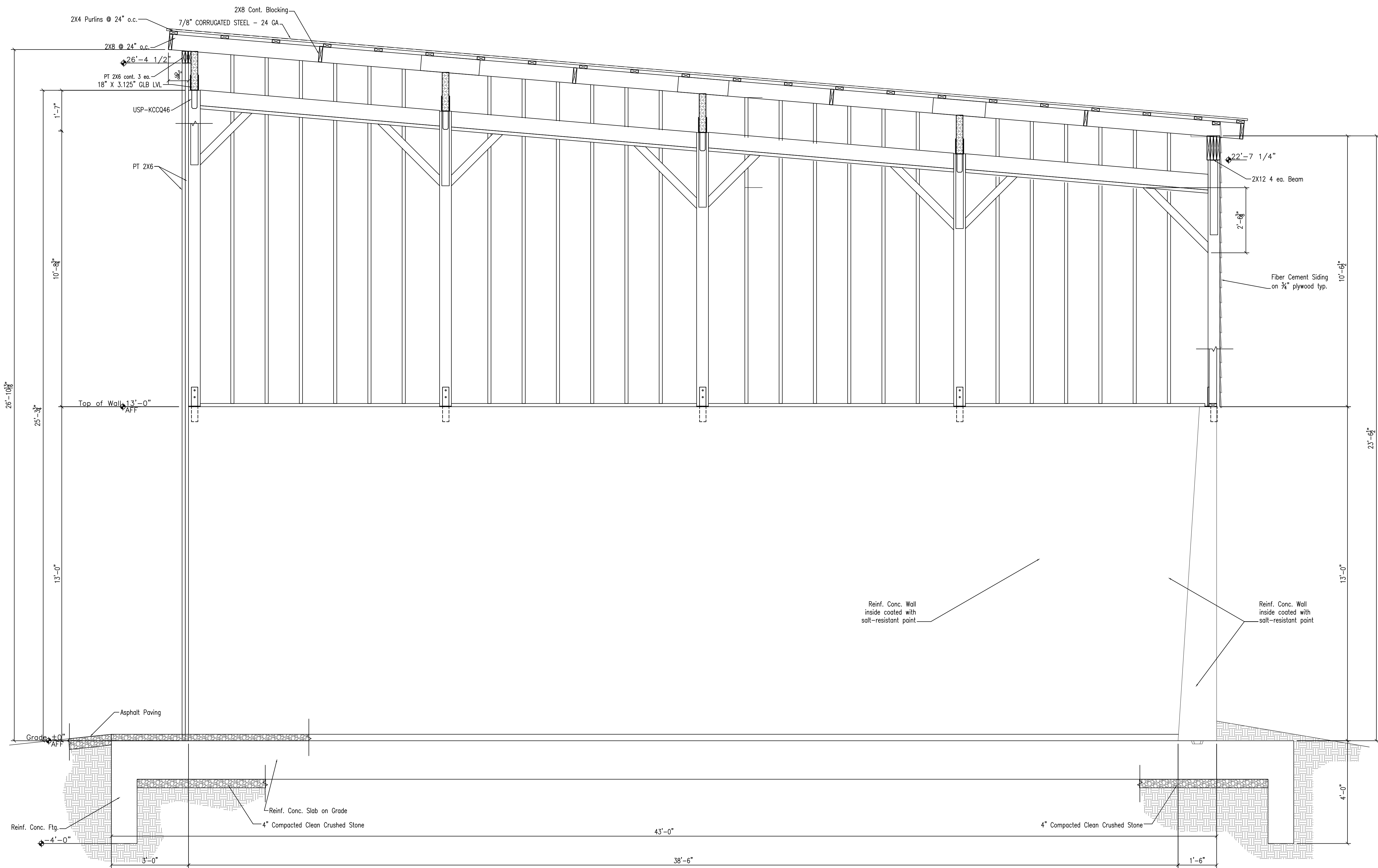
E

D

C

B

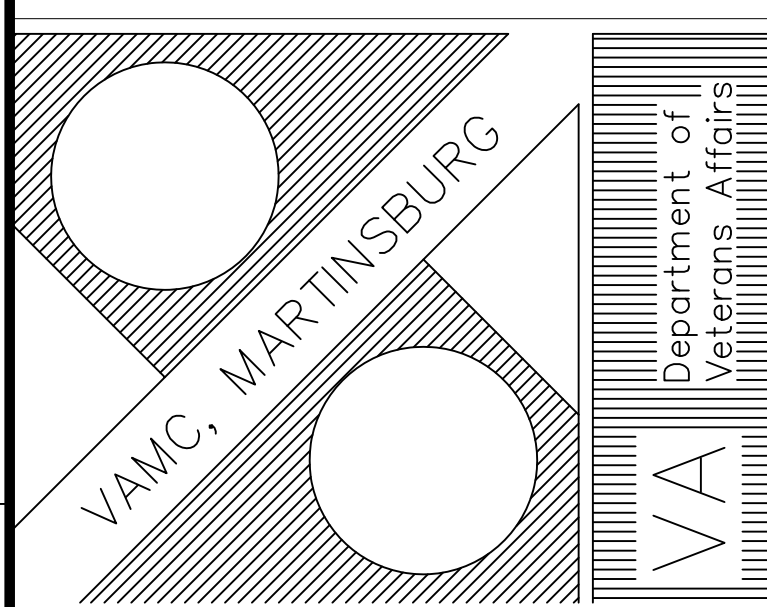
A



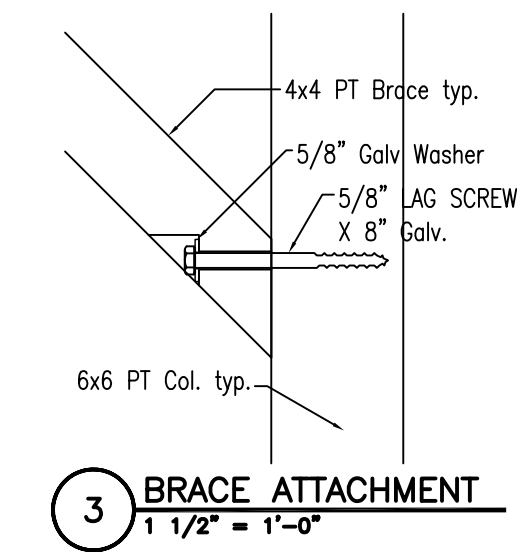
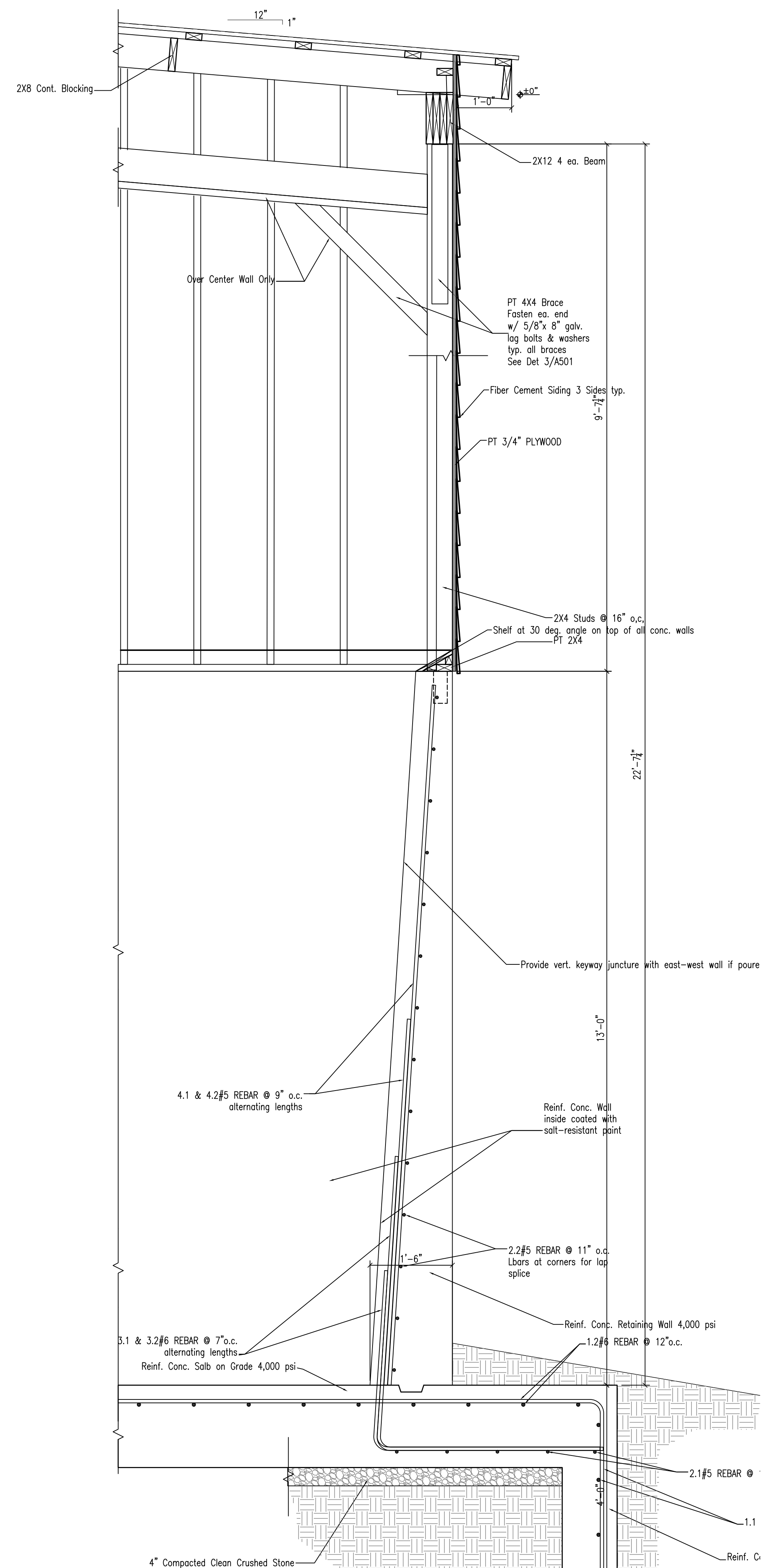
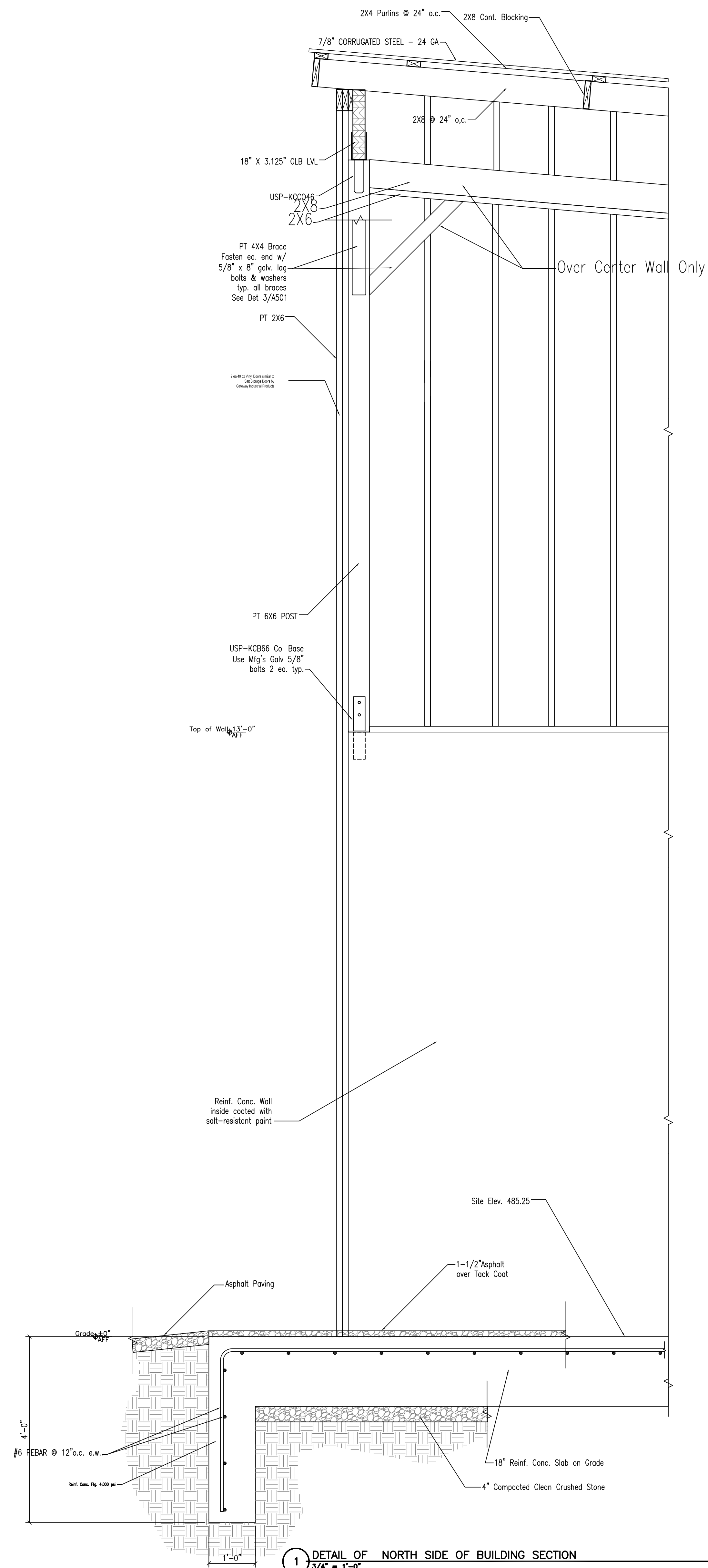
1 TRANSVERSE BUILDING SECTION
1/2" = 1'-0"

CONSULTANTS

SALT SHED
510 BUTLER AVENUE
OWNER
VAMC MARTINSBURG

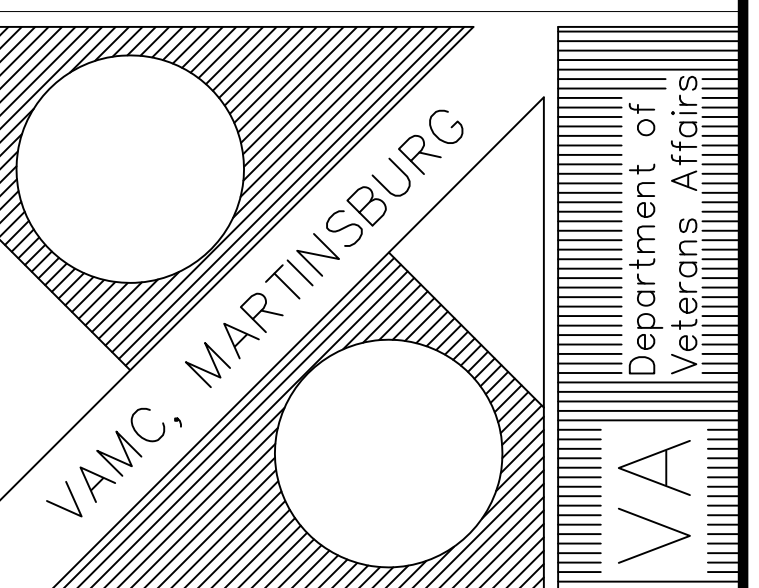


MARK	DATE	DESCRIPTION
PROJECT NO:	613-116	
CAD DWG FILE:	A-303 NORTH SOUTH SECTION.DWG	
DRAWN BY:	SP	
CHK'D BY:	-	
VAMC, MARTINSBURG WV		
SHEET TITLE		
NORTH SOUTH SECTION - INTERIOR WALL ELEVATION		
A-303		
SHEET	8	OF 12



CONSULTANTS

SALT SHED
D BUTLER AVENUE
MC MARTINSBURG



MARK	DATE	DESCRIPTION
PROJECT NO: 613-116		
CAD DWG FILE: A-501 DETAILS.DWG		
DRAWN BY: SP		
CHK'D BY: -		

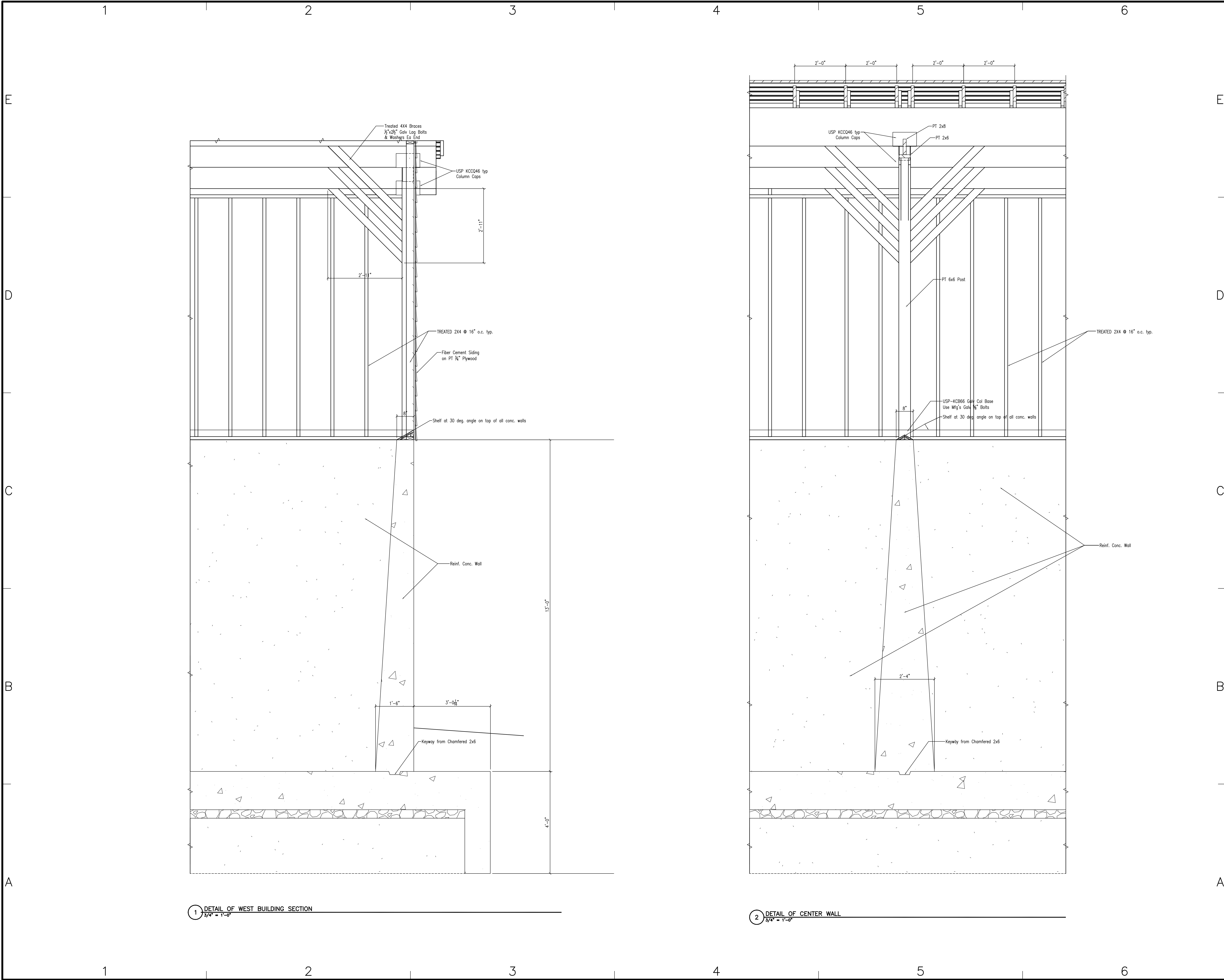
VAMC, MARTINSBURG WV

SHEET TITLE

DETAILS

A-501

SHEET 9 OF 12



CONSULTANTS

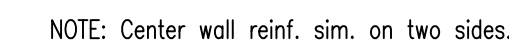
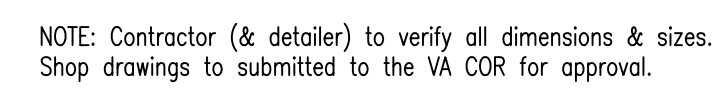
OWNER

SALT SHED
510 BUTLER AVENUE
VAMC MARTINSBURG

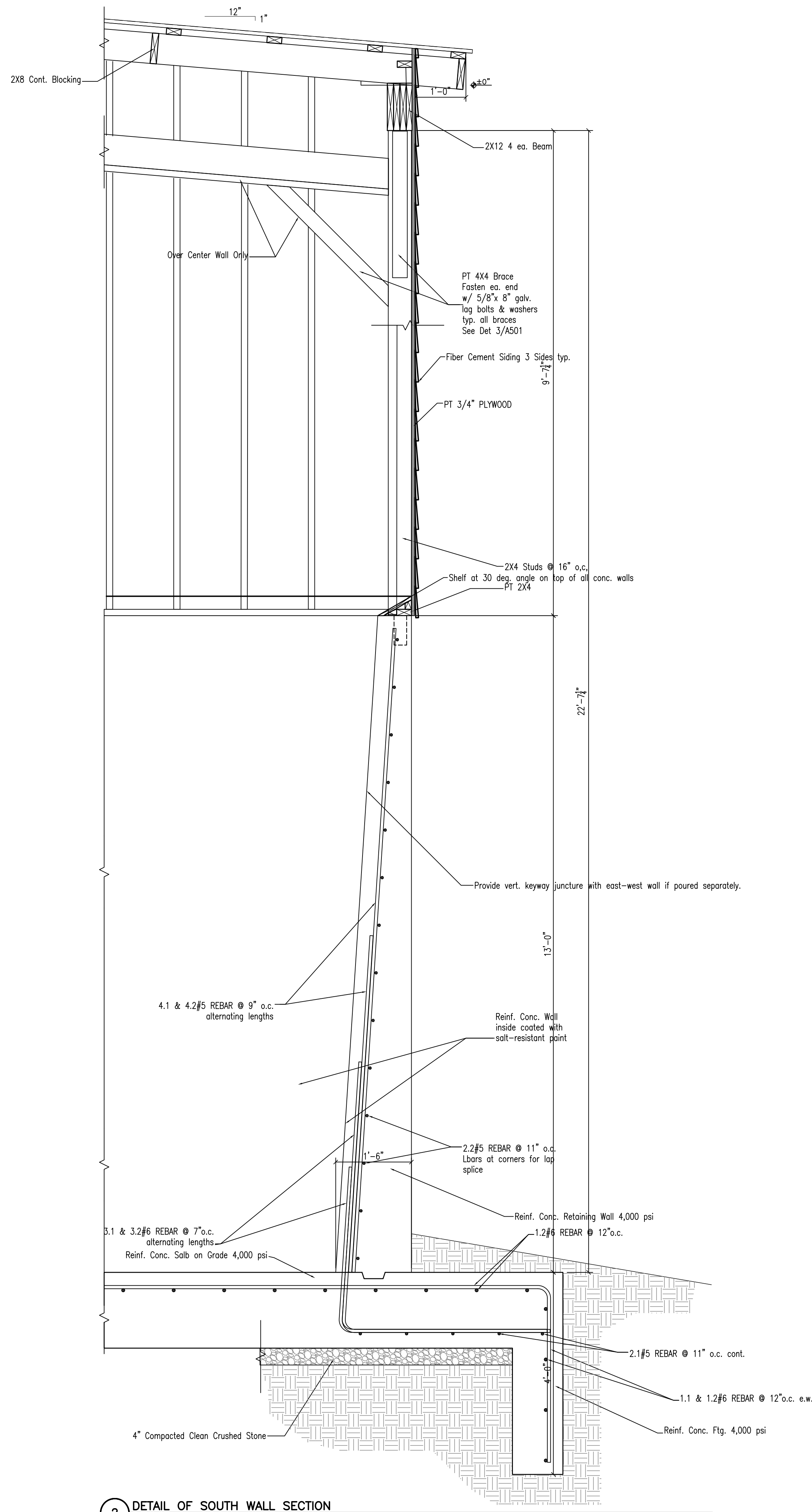
Department of Veterans Affairs
VAMC, MARTINSBURG

MARK	DATE	DESCRIPTION
PROJECT NO: 613-118		
CAD DWG FILE: A-502 DETAILS.DWG		
DRAWN BY: SP		
CHK'D BY: -		
VAMC, MARTINSBURG WV		
SHEET TITLE		
DETAILS		
A-502		
SHEET	10	OF 12

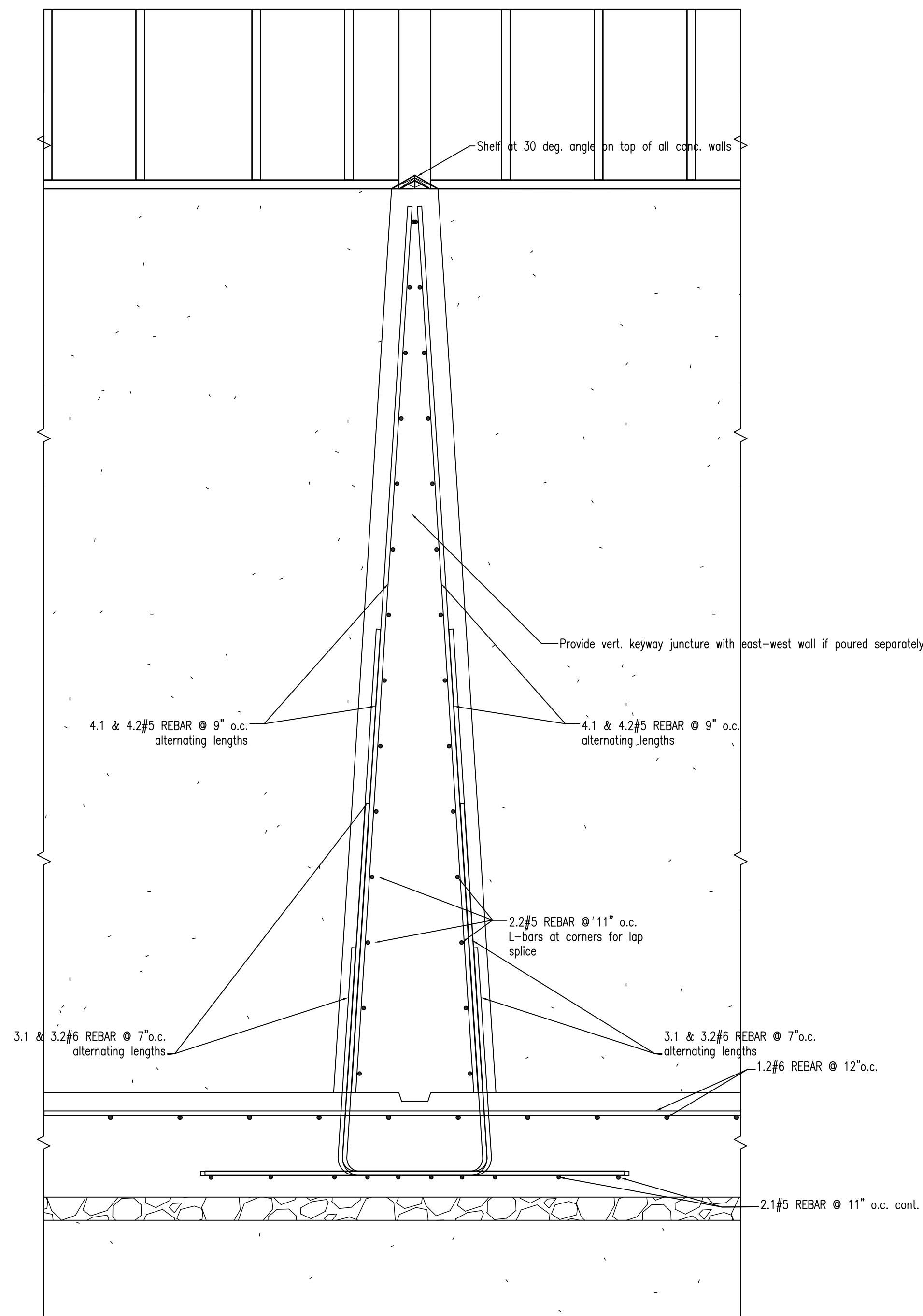
C:\USERS\SAMPSON\WORK\DOCUMENTS\VA FILES\WAREHOUSE_NEW\SALT SHED\DRAWINGS_CAD\SALT SHED\SALT SHED\SHEET A-502 DETAILS.DWG



C:\USERS\SAMPOWELL\MY DOCUMENTS\VA FILES\WAREHOUSE_NEW\SALT
DRAWINGS CAD\SALT SHED\SALT SHED\SHEETS\4-501 DETAILS REPAIR.DWG



2 DETAIL OF SOUTH WALL SECTION
3/4" = 1'-0"



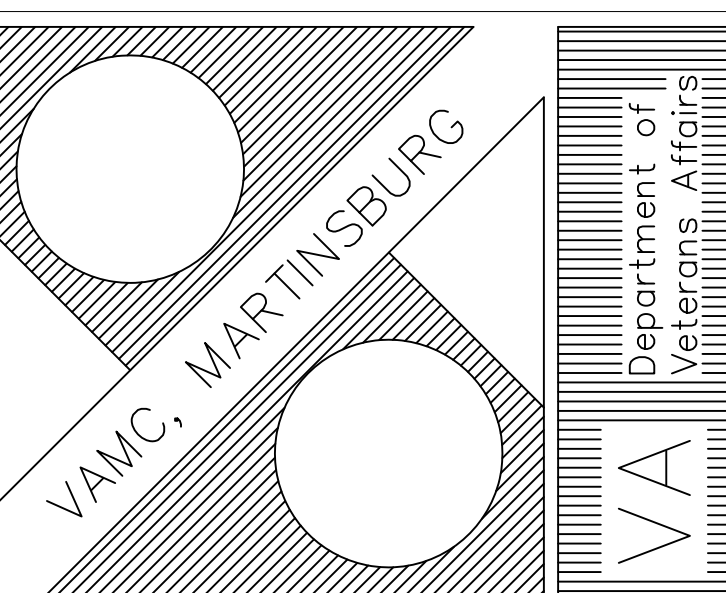
2 REINFORCING DETAILS CENTER WALL
3/4" = 1'-0"

CONSULTANTS

SALT SHED
510 BUTLER AVENUE

OWNER

VAMC MARTINSBURG



MARK	DATE	DESCRIPTION
PROJECT NO:	613-118	
CAD DWG FILE:	A-504 DETAIL REBAR.DWG	
DRAWN BY:	SP	
CHK'D BY:	-	

VAMC, MARTINSBURG WV

SHEET TITLE
DETAIL REBAR

A-504
SHEET 12 OF 12

C:\USERS\GAMPOWELL\MY DOCUMENTS\VA FILES\WAREHOUSE_NEW\SALT SHED\DRAWINGS\CAD\SALT SHED\SALT SHED\SHEET\VA-504 DETAIL REBAR.DWG