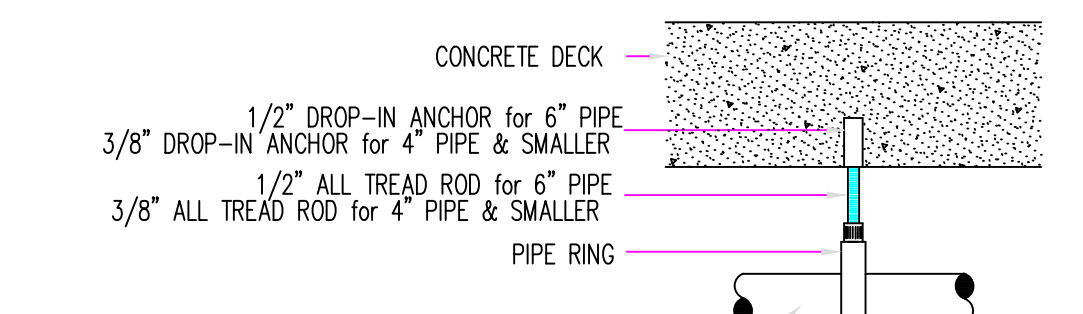


SEVENTH FLOOR, EAST WING PIPING PLAN

SCALE: 1/8" = 1'-0"

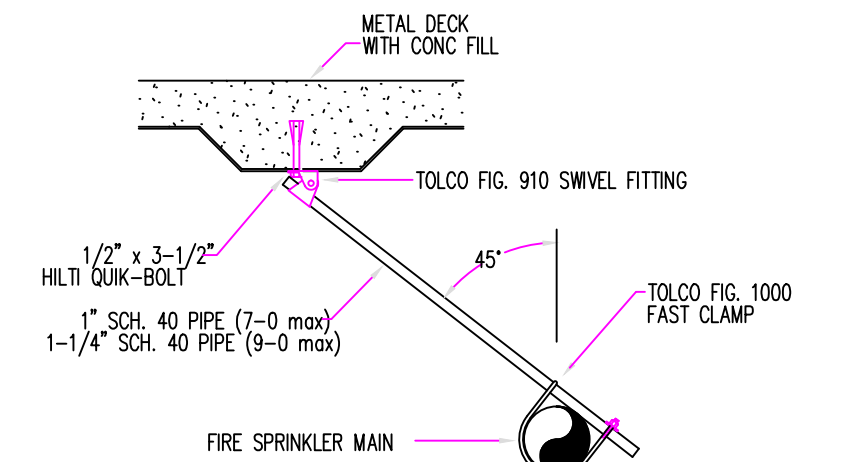
STANDPIPE and FLOOR CONTROL ASSEMBLY DETAIL

SCALE: NONE



#5 HANGER DETAIL

NO SCALE



SWAY BRACE ATTACHMENT DETAIL

NO SCALE

EARTHQUAKE BRACE CALCULATION

ZONE OF INFLUENCE CALCULATION
(USED IN LEU OF TABLE 4-14.3.5.3)

PIPE SIZE, LENGTH, QUANTITY, lbs/ft	1/2 WEIGHT OF WATER FILLED PIPE	COMBINED WEIGHT OF ALL PIPE IN ZONE	ADJUSTED ASSIGNED LOAD
2"(2.57) x 45'-11(1.03) x 20x 6=	103 lbs	134 lbs	237 lbs

EARTHQUAKE BRACE CALCULATION

ASSIGNED LOAD	ADJUSTED ASSIGNED LOAD	SEE ZONE OF INFLUENCE CALCULATION (ABOVE)	ADJUSTED ASSIGNED LOAD
SPRINKLER MAIN SIZE 2"	BRACE SPACING 40' LAT - 80' LONG		237 lbs
BRACE SPACING: TABLE 4-14.3.5.5	BRACE PIPE SIZE 1"	MAX HORIZ. LOAD 45' FROM VERT.	MAX ASSIGNED LOAD 1767 lbs
FASTENER SIZE: TABLE 4-14.3.5.6	FASTENER SIZE 1/2"	BRACE ANGLE (DIAGONAL) 45° FROM VERT. (FIG. B)	MAX ASSIGNED LOAD 1762 lbs

SUMMARY RESULTS:

ASSIGNED LOAD OF 237 lbs IS LESS THAN THE MAXIMUM ASSIGNED LOAD OF THE PROPOSED ATTACHMENT METHOD.

KEY PLAN



AS-BUILT
4/13/00

HANGER SYMBOL LEGEND	
#1	U-HOOK
#2	SIDE BEAM BRACKET (1/2" ATR & UP)
#21	THREADED SIDE BEAM BRACKET
#3	CONCRETE SHOT & PIN
#4	COACH SCREW ROD
#5	CONCRETE DROP-IN ANCHOR
#6	TOP BEAM CLAMP W/ RETAINER STRAP

UNDERGROUND FIRE MAIN SYMBOLS	
NEW UNDERGROUND PIPING	
EXISTING UNDERGROUND PIPING	
POST INDICATOR VALVE (PIV)	
KEY VALVE	
SOCKET (FIT) FITTING	
SCREWED CAP	
SCREWED PLUG	
PIPE HANGER LOCATION	
HANGER TYP & LENGTH	

FIRE SPRINKLER SYSTEM SYMBOL LEGEND	
AUTO SPRINKLER RISER	
"RIGID" GRV CPLG	
"FLEX" GRV CPLG	
SOCKET (FIT) FITTING	
SCREWED CAP	
SCREWED PLUG	
PIPE HANGER LOCATION	
HANGER TYP & LENGTH	

FIRE SPRINKLER LEGEND								
SYM	MAKE AND MODEL	K-FAC	SIZE	TEMP	TYPE	FINISH	CANOPY	QTY
●	RELIABLE ZX INST QR	5.4	1/2	165°	PENDENT	CHROME	INSTITUTIONAL	65
●	VIKING MODEL M	5.5	1/2	155°	PENDENT	CHROME	CHR. 401	72
●	VIKING MODEL M5	8.0	1/2	155°	EC HSW	CHROME	CHR. 401, UNO	14
●	RELIABLE ZX INST QR	5.4	1/2	165°	HSW	CHROME	INSTITUTIONAL	15
●	REL. ZX INST QR EC CELLMATE	5.4	1/2	165°	EC HSW	CHROME	INSTITUTIONAL	4
●	VIKING MODEL M	5.6	1/2	165°	PENDENT	CHROME	CHR. RECESS	5
Total Sprinklers This Job		0	Total Sprinklers This Sheet		176			

AUTHORITY HAVING JURISDICTION		PHONE
DEPT. OF VETERANS AFFAIRS		(209) 228-6932
#	Date	By
1	4/13/00	SR

Contractor: A & D CONTRACTING DIVISION	
Address: 11465 WOODSIDE AVE.	
Santee, CA 92071	
Phone: (619) 448-1962	
Architect: .	
Address: .	
Phone: .	

VAMC FRESNO	
BLDG. 1, PHASE II	
2615 E CLINTON AVE.	
FRESNO, CA 93703	
TITLE: 7th FLOOR, EAST WING SPRINKLER PIPING PLAN	
11465 WOODSIDE AVE.	
Santee, CA 92071	
FAX: (619) 448-1962	
LICENSE NO. C16 602040	

JOB NO. 9825	SCALE 1/8" = 1'-0"
DRAWN J. G.	DATE 11/23/99
SHEET 14 of 15	