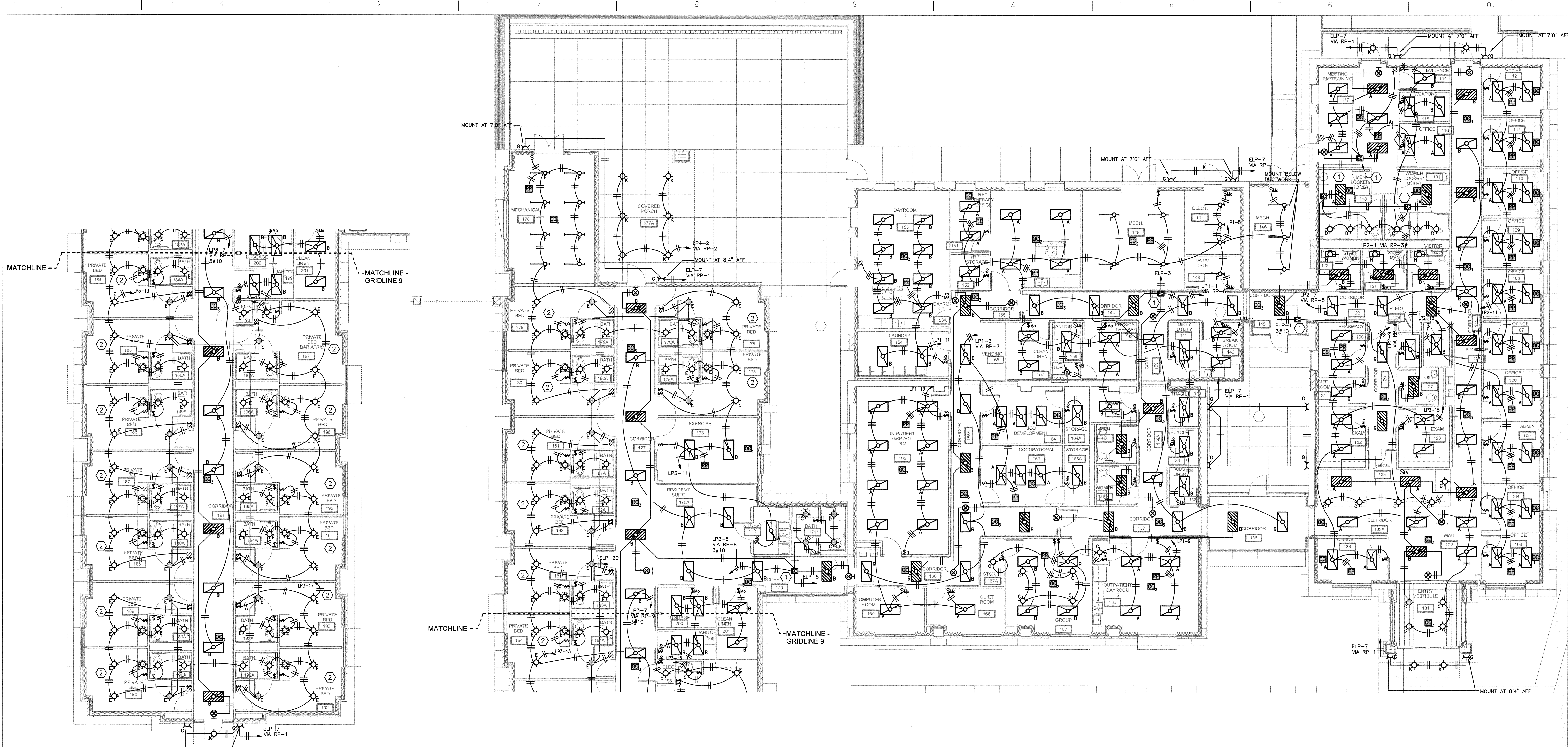
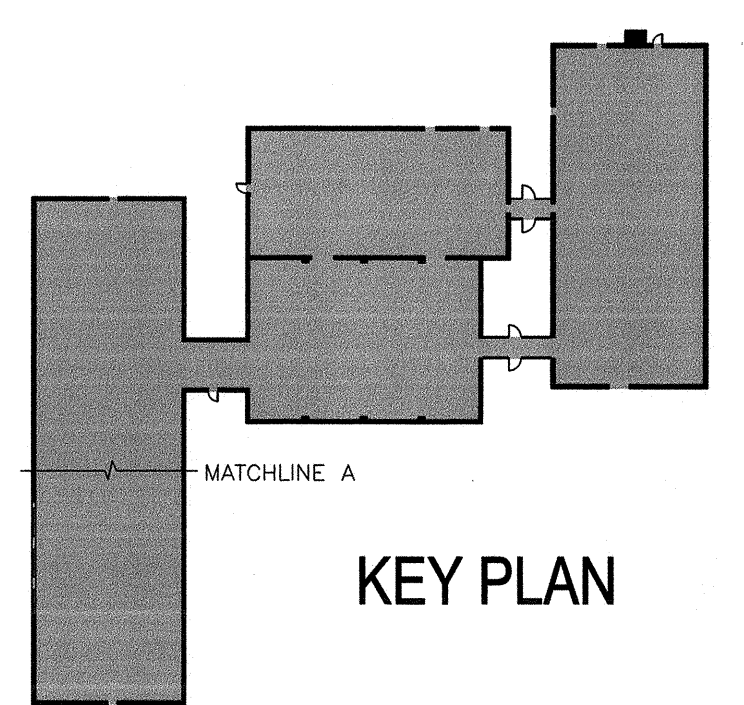


three inches = one foot
one and one half inches = one foot
one inch = one foot
three quarters inch = one foot
one half inch = one foot
three eighths inch = one foot
one quarter inch = one foot
one eighth inch = one foot
one sixteenth inch = one foot



E3 LIGHTING FLOOR PLAN
1/8" = 1'-0"

- LIGHTING KEYED NOTES**
- 1 LOCATE ELGU REMOTE TEST SWITCH IN NEAREST ELECTRICAL ROOM.
 - 2 PROVIDE TAMPER PROOF ELECTRICAL LIGHT FIXTURES IN PRIVATE BED ROOMS.



Revisions:	Date

CONSULTANTS:

PETTIT & PETTIT Consulting Engineers, Inc.
Heritage West Building, Suite 400
201 East Markham Street
Little Rock, Arkansas 72201-1631 Telephone [501] 374-3731

ARCHITECT / ENGINEERS:

TAAGART ARCHITECTS
4500 Burrow Drive
North Little Rock, AR 72116
Phone: 501-758-7443
Fax: 501-753-7309
www.taagarch.com

Project Title RESIDENTIAL TREATMENT BUILDING LIGHTING FLOOR PLAN	Project Number 564-341
Approved: Project Director	Building Number

Office of Facilities Management
DEPARTMENT OF VETERANS AFFAIRS

Project Title
Renovate Leroy Pond Army Reserve Center for Mental Health Residential Rehabilitation Treatment/ Police Training

Location
Fayetteville, AR

Date
9/7/12

Checked
ADA

Drawn
RAS

Drawing Number
EL-103

Dwg. 113 of 126