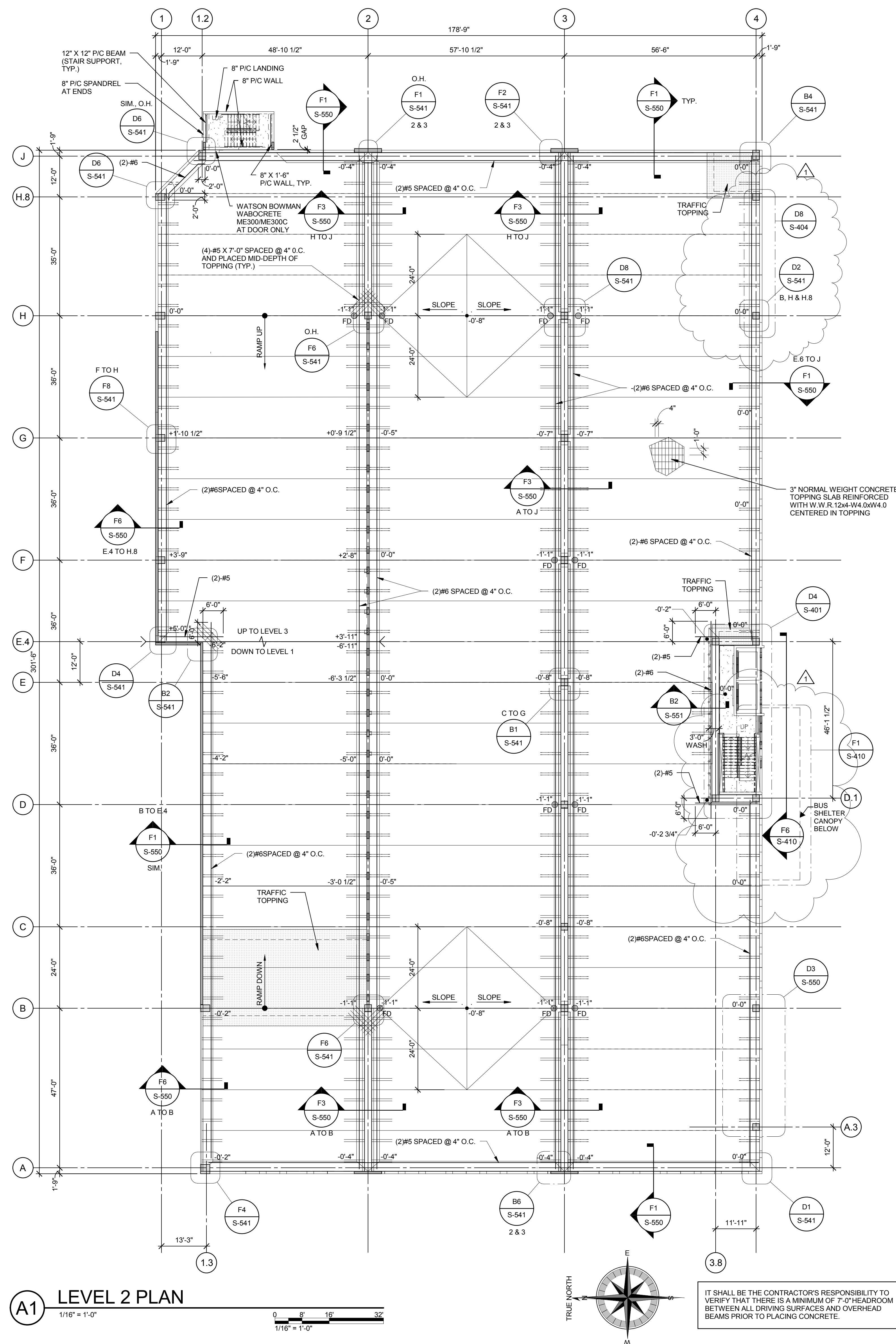


ISOMETRIC

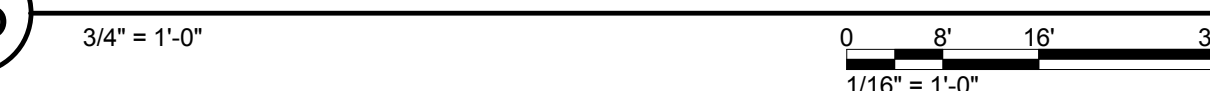
SHEET NOTES:

- REFERENCES:
  - GENERAL NOTES ..... S-001
  - PLAN ELEVATION KEY ..... F5/S-102
  - FLOOR DRAIN LOCATIONS & DETAILS ..... PLUMBING DRAWS. SEE C7/S-531.
  - TYPICAL P/C COLUMN DETAILS ..... S-540 & S-541
  - TYPICAL P/C BEAM DETAILS ..... S-520, S-531 & S-550
  - TYPICAL P/C TEE DETAILS ..... S-520, S-531 & S-550
  - TYPICAL P/C TEE LAYOUTS ..... F7/S-102
  - TYPICAL LIGHT WALL & SHEAR WALL DETAILS ..... S-301.
  - STAIR & STAIR/ELEVATOR PLANS & DETAILS ..... S-401.
  - LIGHT FIXTURE LOCATIONS & INFORMATION ..... ELECTRICAL DRAWINGS
- INDICATES PLAN MATCH LINE.
- DETAIL CUTS AND INFORMATION SHOWN ON THIS SHEET APPLY TO ALL SUPPORTED TIER PLANS UNLESS NOTED OTHERWISE ON THOSE PLANS.
- USE STRAIGHT LINE INTERPOLATION FOR FLOOR ELEVATIONS BETWEEN THOSE INDICATED.
- DATUM ELEVATION FOR THIS LEVEL IS: 0'-0" = 538'-4".
- PRECASTER TO CO-ORDINATE AND PROVIDE EMBEDS FOR ELEVATOR STEEL BEAMS, CANOPY STRUCTURAL STEEL BEAMS AND HANGER ROD AND GLAZING SUPPORT FRAMING POSTS AND BEAMS EMBED PLATES AS REQUIRED BY WALKER DRAWINGS AND/OR THE ELEVATOR MANUFACTURER DRAWINGS.
- FOR TYPICAL TOPPING SLAB REINFORCEMENT, SEE NOTE 3 (UNDER TIE NOTES) ON SHEET S-531.
- DIAPHRAGM CHORD AND DRAG STEEL SHALL BE PLACED AT MID DEPTH OF TOPPING SLAB AT A SPACING OF 4" O.C. (MAX.).
- PRECASTER SHALL DESIGN CONNECTION BETWEEN TOPPING SLAB AND P/C WALLS ALONG THE PERIMETER AND AT P/C LIGHTWALL ALONG LINE 2. CONNECTION @ P/C WALLS SHOULD BE CAPABLE OF TRANSFERRING LATERAL LOAD CORRESPONDING TO THE THE DIAPHRAGM NOMINAL SHEAR CAPACITY PLUS THE FORCE ASSOCIATED WITH DIAPHRAGM DRAG STEEL, (IF INDICATED) ON PLANS.
- SURFACE SEALER SHALL BE APPLIED TO ALL SUPPORTED CONCRETE FLOORS, CONCRETE STAIR TREADS AND LANDINGS.
- TRAFFIC BEARING WATER PROOF MEMBRANE SHALL BE APPLIED OVER ALL INHABITED AREAS, INCLUDING ELECTRICAL AND MECHANICAL EQUIPMENT ROOMS. REFER TO PLAN DRAWINGS FOR LOCATIONS AND SPECIFICATIONS FOR MEMBRANE TYPE. CONTRACTOR NOTE: CONTRARY TO THE CONCRETE FINISHES SPECIFIED ELSEWHERE, THOSE AREAS, WHICH RECEIVE A TRAFFIC BEARING MEMBRANE SHALL HAVE A LIGHT BROOM FINISH. CONTRACTOR SHALL VERIFY THAT THE CONCRETE FINISH IS COMPATIBLE WITH THAT RECOMMENDED BY THE MEMBRANE SUPPLIER AND INSTALLER.
- PRECAST WALL PANEL AT FUTURE ENTRY/EXIT SHALL HAVE CONNECTIONS THAT CAN BE REMOVED IN THE FUTURE. SEE DETAIL D8/S-550.

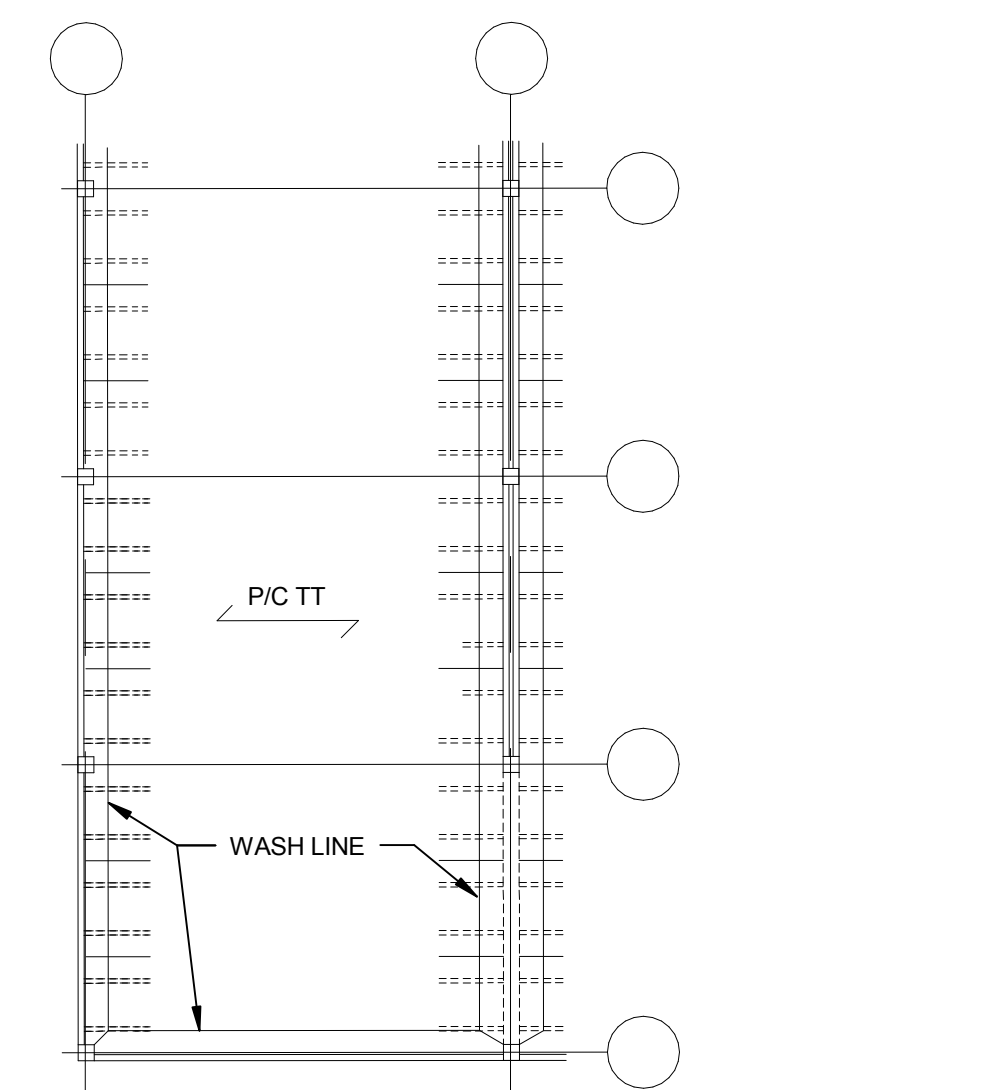


A1 LEVEL 2 PLAN  
1/16" = 1'-0"

F5 PLAN ELEVATION KEY  
3/4" = 1'-0"



F7 TYPICAL BAY PLAN  
1/16" = 1'-0"



Date	Revisions
2-24-14	DD2 COST ESTIMATE SET
3-05-14	35% CD SET - NOT FOR CONSTRUCTION
4-30-14	65% CD SET - NOT FOR CONSTRUCTION
6-03-14	95% CD SET - NOT FOR CONSTRUCTION
7-15-14	100% CD SET
9-21-15	CLARIFICATION TO VEHICULAR ENTRY AND BUS SHELTER CANOPIES

CONSULTANTS:

WOOLPERT ENGINEERING  
343 FOUNTAINS PARKWAY  
SUITE 100  
FAIRVIEW HEIGHTS, IL 62208  
618-632-7004 office  
618-632-0100 fax



DAVID MASON & ASSOCIATES  
800 S. VANDEVENTER AVE.  
ST. LOUIS, MO 63110  
314-534-1030 office  
314-534-1053 fax



SCI - GEOTECHNICAL  
130 POINT WEST BLVD.  
ST. CHARLES, MO 63301  
636-949-8200  
636-949-8269 fax



James E. Warner  
104009



ARCHITECT/ENGINEERS:



Drawing Title

LEVEL 2 PLAN

Approved: Project Director

Project Title  
PATIENT PARKING GARAGE EXPANSION  
DEPARTMENT OF VETERANS AFFAIRS  
NORTH TEXAS VETERANS HEALTH CARE CENTER  
4500 S. LANCASTER ROAD  
DALLAS, TEXAS 75216

Location

Date  
Issue Date

Checked  
JEW

Drawn  
SOA

Project Number  
549-906

Building Number  
80

Drawing Number

S-102  
Dwg. 50 of 93

Office of  
Construction  
and Facilities  
Management

