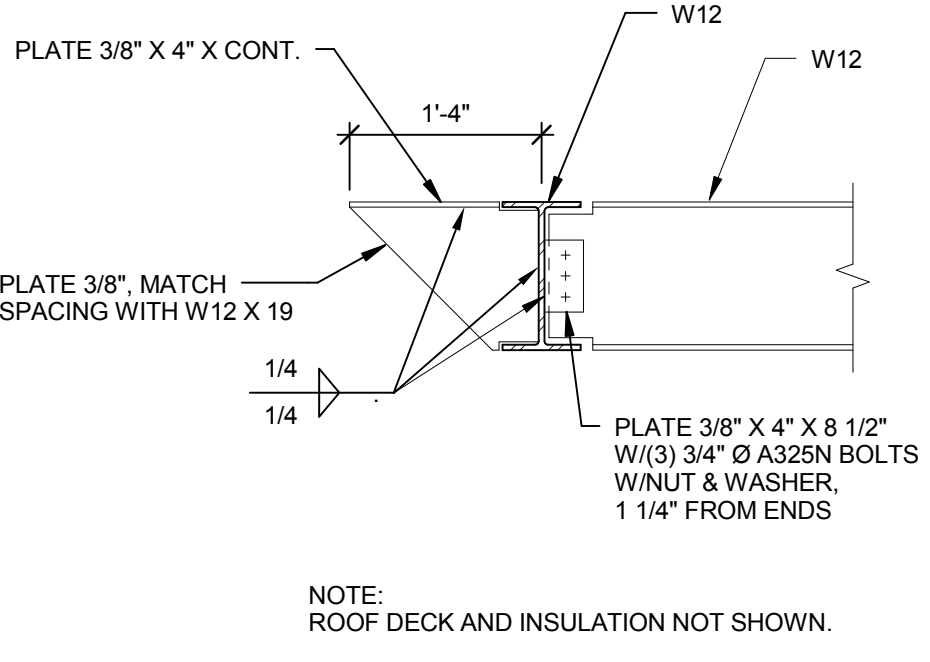
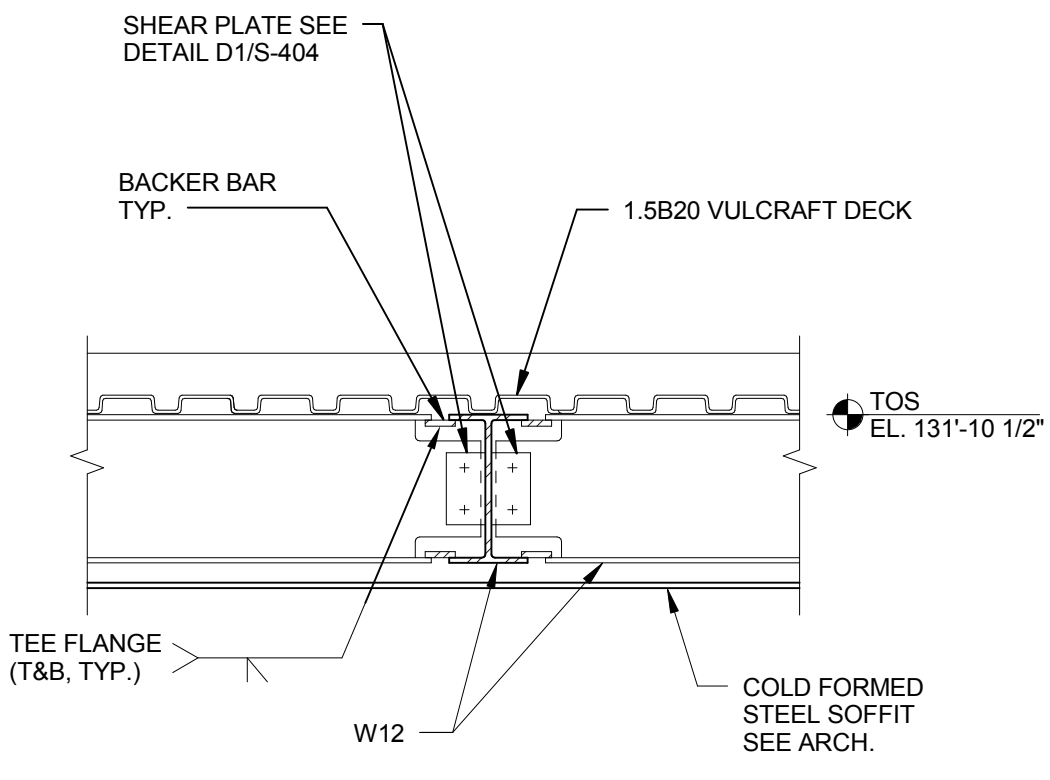


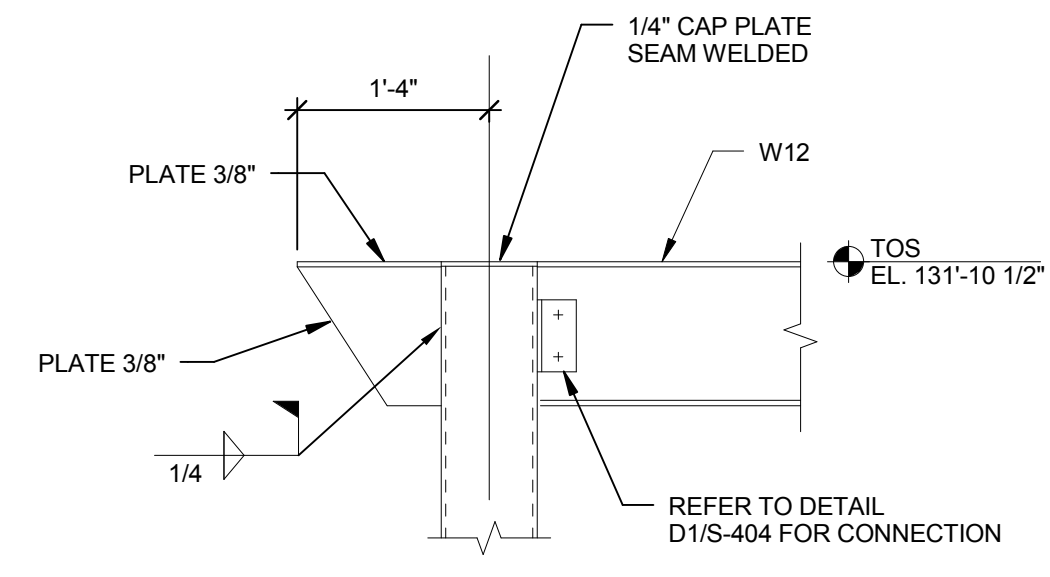
one eighth inch = one foot  
one quarter inch = one foot  
one half inch = one foot  
three quarters inch = one foot  
one inch = one foot  
one and one half inches = one foot  
two inches = one foot  
three inches = one foot  
four inches = one foot  
five inches = one foot  
six inches = one foot  
seven inches = one foot  
eight inches = one foot  
nine inches = one foot  
ten inches = one foot  
eleven inches = one foot  
twelve inches = one foot  
thirteen inches = one foot  
fourteen inches = one foot  
fifteen inches = one foot  
sixteen inches = one foot  
seventeen inches = one foot  
eighteen inches = one foot  
nineteen inches = one foot  
twenty inches = one foot  
twenty one inches = one foot  
twenty two inches = one foot  
twenty three inches = one foot  
twenty four inches = one foot  
twenty five inches = one foot  
twenty six inches = one foot  
twenty seven inches = one foot  
twenty eight inches = one foot  
twenty nine inches = one foot  
thirty inches = one foot  
thirty one inches = one foot  
thirty two inches = one foot  
thirty three inches = one foot  
thirty four inches = one foot  
thirty five inches = one foot  
thirty six inches = one foot  
thirty seven inches = one foot  
thirty eight inches = one foot  
thirty nine inches = one foot  
forty inches = one foot  
forty one inches = one foot  
forty two inches = one foot  
forty three inches = one foot  
forty four inches = one foot  
forty five inches = one foot  
forty six inches = one foot  
forty seven inches = one foot  
forty eight inches = one foot  
forty nine inches = one foot  
fifty inches = one foot  
fifty one inches = one foot  
fifty two inches = one foot  
fifty three inches = one foot  
fifty four inches = one foot  
fifty five inches = one foot  
fifty six inches = one foot  
fifty seven inches = one foot  
fifty eight inches = one foot  
fifty nine inches = one foot  
sixty inches = one foot  
sixty one inches = one foot  
sixty two inches = one foot  
sixty three inches = one foot  
sixty four inches = one foot  
sixty five inches = one foot  
sixty six inches = one foot  
sixty seven inches = one foot  
sixty eight inches = one foot  
sixty nine inches = one foot  
seventy inches = one foot  
seventy one inches = one foot  
seventy two inches = one foot  
seventy three inches = one foot  
seventy four inches = one foot  
seventy five inches = one foot  
seventy six inches = one foot  
seventy seven inches = one foot  
seventy eight inches = one foot  
seventy nine inches = one foot  
eighty inches = one foot  
eighty one inches = one foot  
eighty two inches = one foot  
eighty three inches = one foot  
eighty four inches = one foot  
eighty five inches = one foot  
eighty six inches = one foot  
eighty seven inches = one foot  
eighty eight inches = one foot  
eighty nine inches = one foot  
ninety inches = one foot  
ninety one inches = one foot  
ninety two inches = one foot  
ninety three inches = one foot  
ninety four inches = one foot  
ninety five inches = one foot  
ninety six inches = one foot  
ninety seven inches = one foot  
ninety eight inches = one foot  
ninety nine inches = one foot  
one hundred inches = one foot



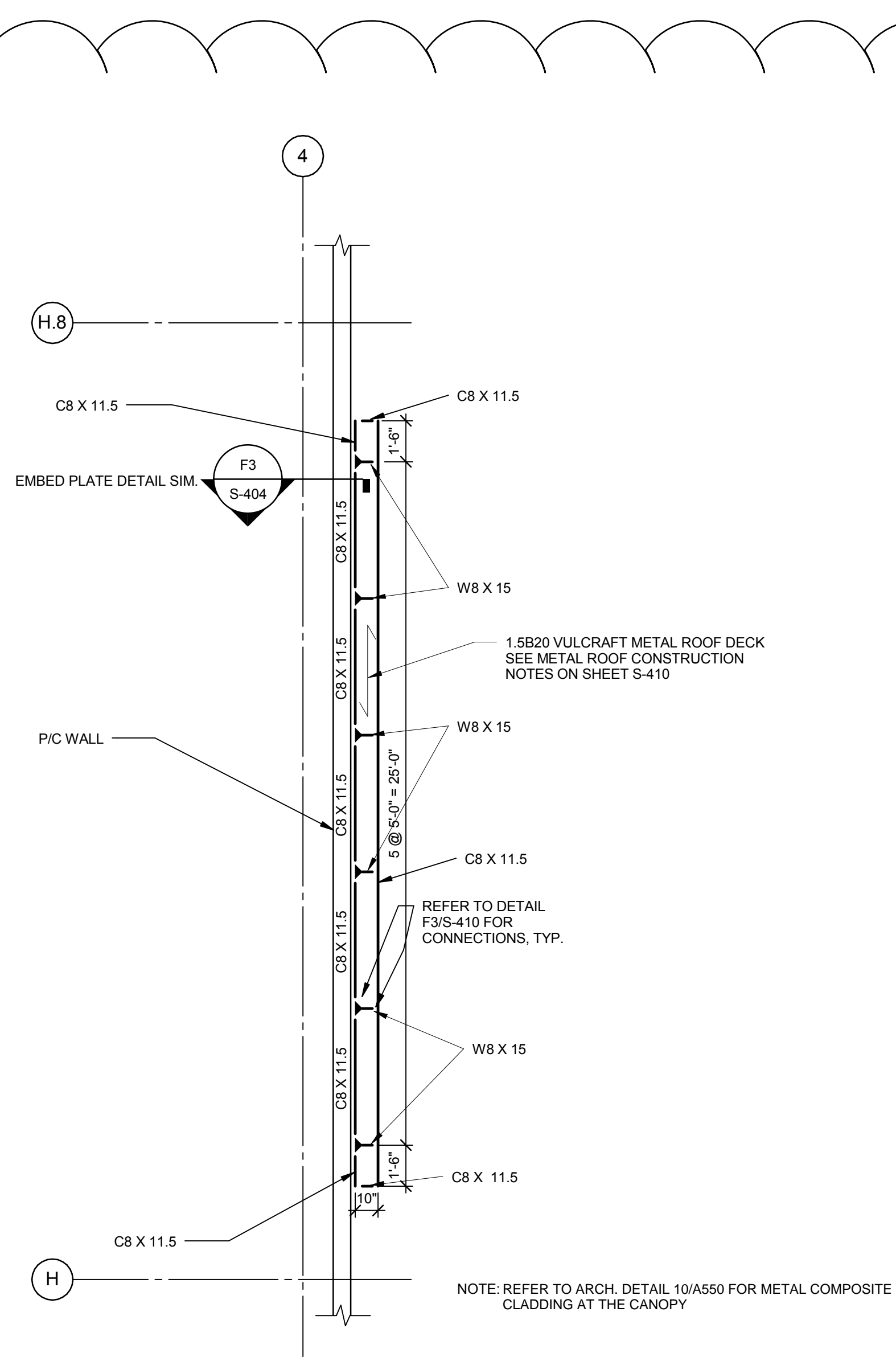
D1 STEEL BEAM/BEM SIMPLE CONNECTION DETAIL  
3/4" = 1'-0"



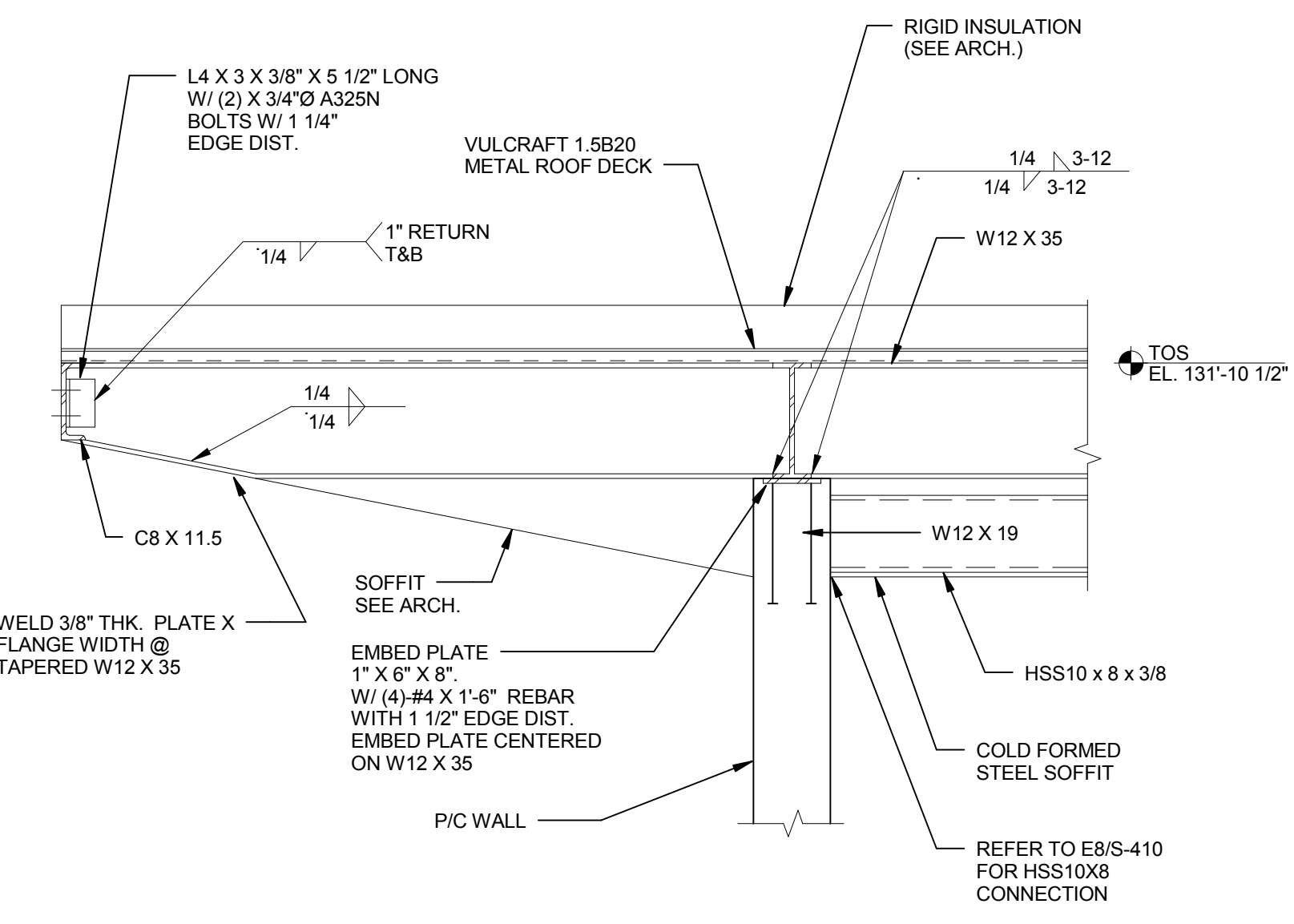
D3 STEEL BEAM/BEM MOMENT CONNECTION DETAIL  
3/4" = 1'-0"



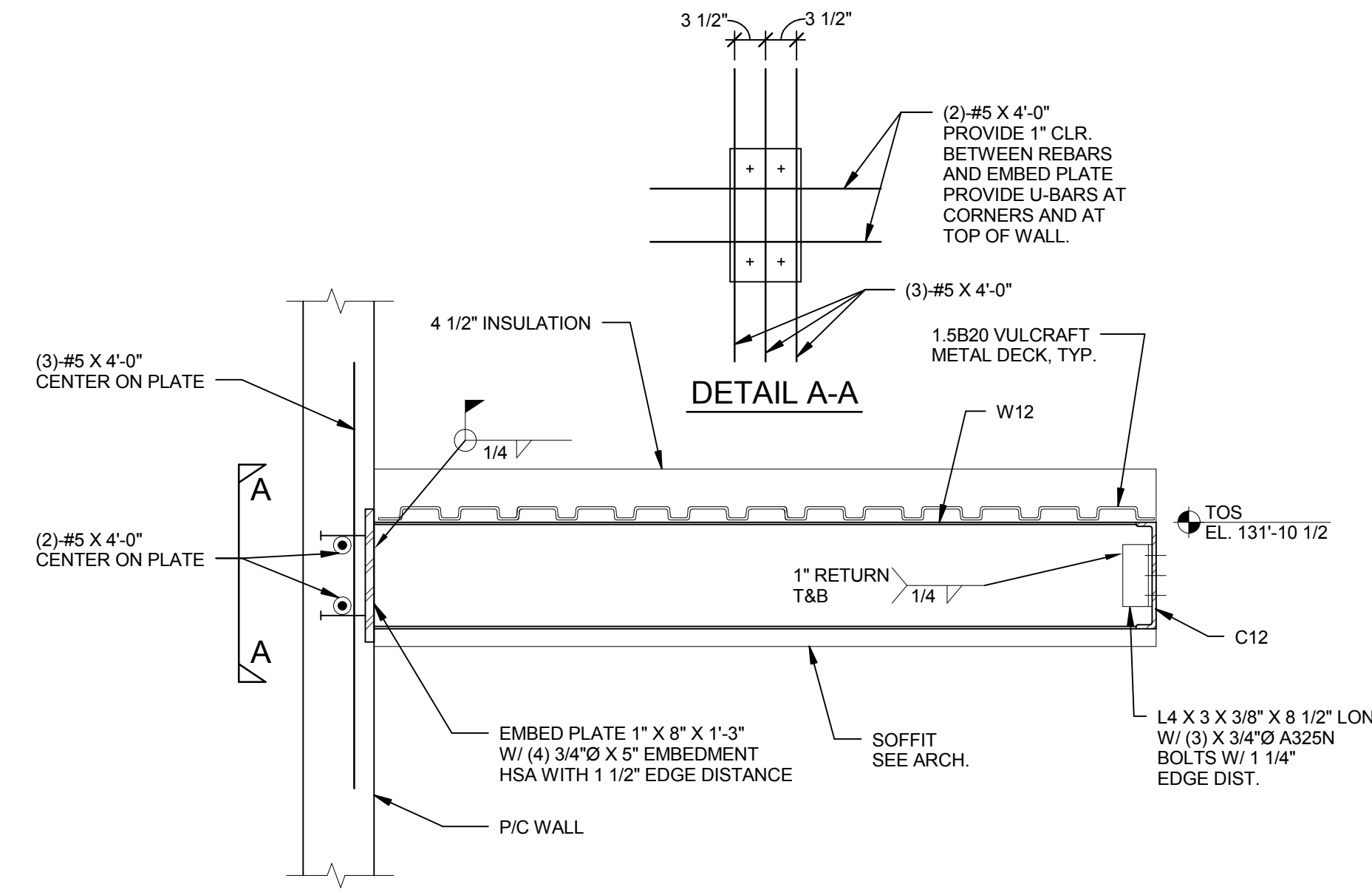
D5 STEEL BEAM/COLUMN MOMENT CONNECTION DETAIL  
3/4" = 1'-0"



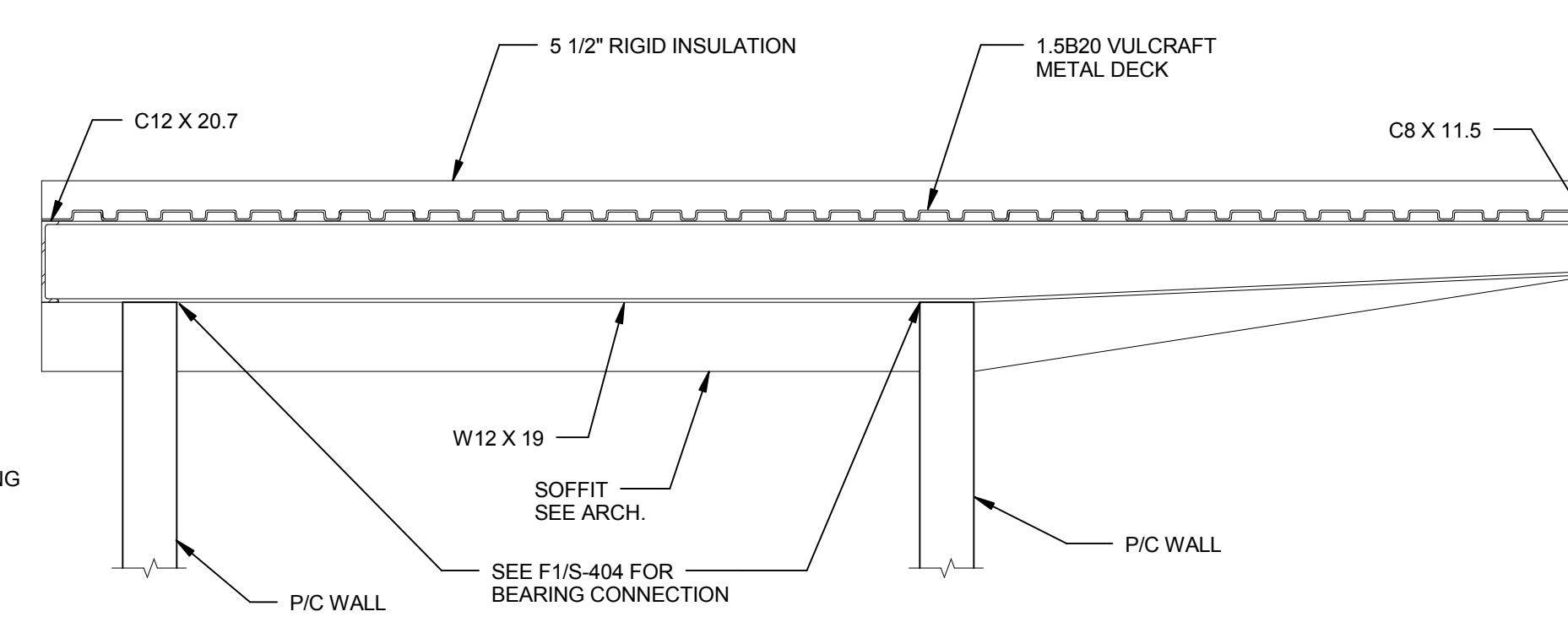
D8 VEHICLE ENTRY CANOPY FRAMING PLAN  
1/4" = 1'-0"  
0 8 16 32  
1/16" = 1'-0"



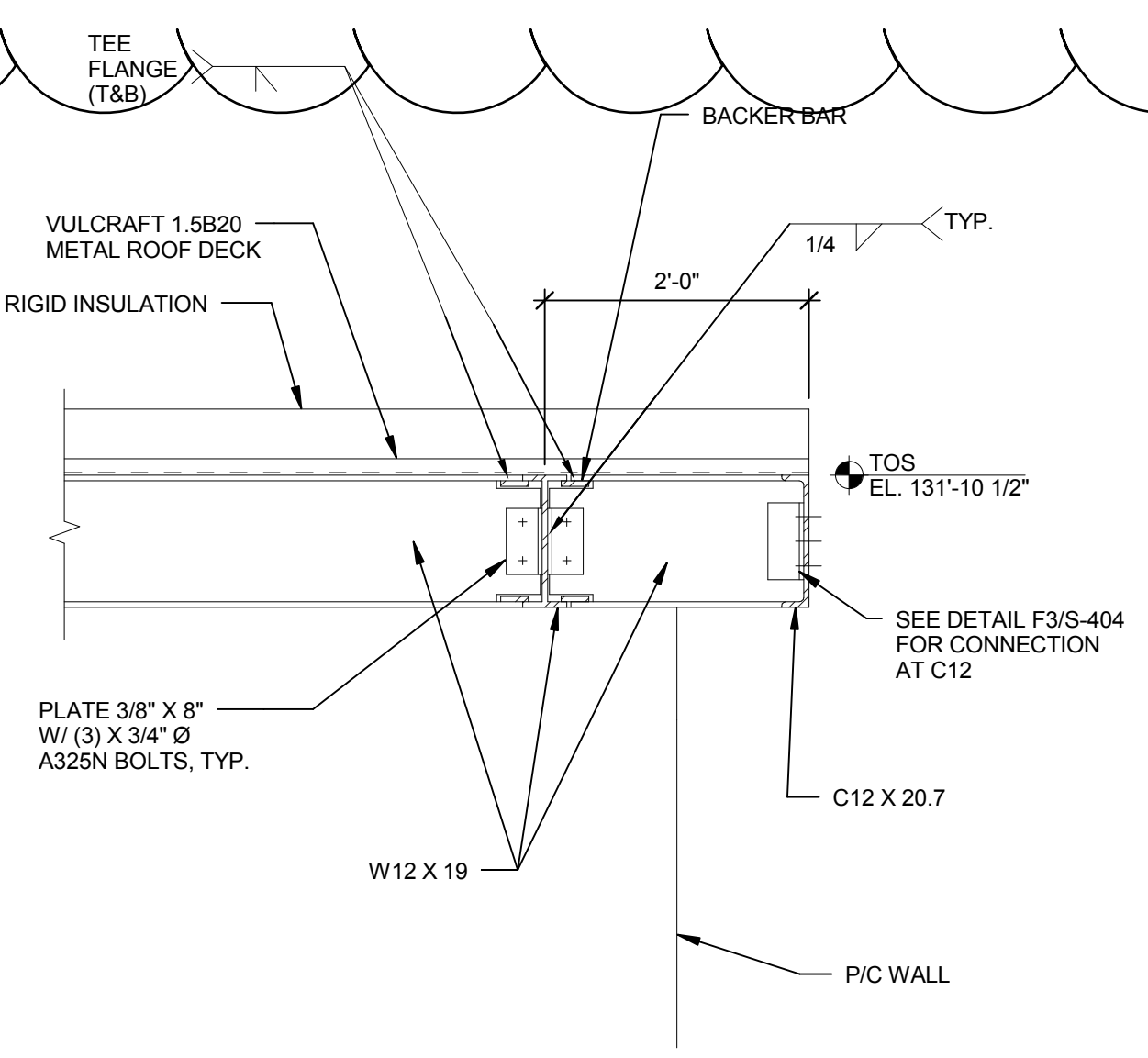
F1 STEEL CANOPY FRAMING DETAIL  
3/4" = 1'-0"  
(AT SOUTH STAIR)



F3 STEEL CANOPY FRAMING DETAIL  
3/4" = 1'-0"  
(AT SOUTH STAIR)



F5 STEEL CANOPY FRAMING DETAIL  
1/2" = 1'-0"  
(AT EAST STAIR)



F8 STEEL BEAM/BEM MOMENT CONNECTION DETAIL  
3/4" = 1'-0"

<table border="1"><thead><tr><th>Date</th><th>Revisions</th></tr></thead><tbody><tr><td>2-24-14</td><td>DD2 COST ESTIMATE SET</td></tr><tr><td>3-05-14</td><td>35% CD SET - NOT FOR CONSTRUCTION</td></tr><tr><td>4-30-14</td><td>65% CD SET - NOT FOR CONSTRUCTION</td></tr><tr><td>6-03-14</td><td>95% CD SET - NOT FOR CONSTRUCTION</td></tr><tr><td>7-15-14</td><td>100% CD SET</td></tr><tr><td>9-21-15</td><td>CLARIFICATION TO VEHICULAR ENTRY AND BUS SHELTER CANOPIES</td></tr></tbody></table> <p>PRINTED: 9/21/2015 4:29:14 PM</p>	Date	Revisions	2-24-14	DD2 COST ESTIMATE SET	3-05-14	35% CD SET - NOT FOR CONSTRUCTION	4-30-14	65% CD SET - NOT FOR CONSTRUCTION	6-03-14	95% CD SET - NOT FOR CONSTRUCTION	7-15-14	100% CD SET	9-21-15	CLARIFICATION TO VEHICULAR ENTRY AND BUS SHELTER CANOPIES	<p><b>CONSULTANTS:</b></p> <table border="0"><tr><td><b>WOOLPERT ENGINEERING</b> 343 FOUNTAINS PARKWAY SUITE 100 FAIRVIEW HEIGHTS, IL 62208 618-632-7004 office 618-632-0100 fax</td><td><b>DAVID MASON &amp; ASSOCIATES</b> 800 S. VANDEVENTER AVE. ST. LOUIS, MO 63110 314-534-1030 office 314-534-1053 fax</td><td><b>SCI - GEOTECHNICAL ASSOCIATES</b> 130 POINT WEST BLVD. ST. CHARLES, MO 63301 636-949-8200 636-949-8269 fax</td></tr></table> <p>WOLPERT DAVID MASON &amp; ASSOCIATES SCI Engineering, Inc.</p>	<b>WOOLPERT ENGINEERING</b> 343 FOUNTAINS PARKWAY SUITE 100 FAIRVIEW HEIGHTS, IL 62208 618-632-7004 office 618-632-0100 fax	<b>DAVID MASON &amp; ASSOCIATES</b> 800 S. VANDEVENTER AVE. ST. LOUIS, MO 63110 314-534-1030 office 314-534-1053 fax	<b>SCI - GEOTECHNICAL ASSOCIATES</b> 130 POINT WEST BLVD. ST. CHARLES, MO 63301 636-949-8200 636-949-8269 fax	<p>James E. Warner 104009</p> <p>STATE OF TEXAS JAMES E. WARNER 104009 9-21-15</p> <p><b>ARCHITECT/ENGINEERS:</b></p> <p><b>Chiodini ARCHITECTS</b> Architecture / Interior Design / Graphics 1401 S. Brentwood Blvd. / Suite 425 / St. Louis, Missouri 63114 314-725-6981 arch@chiodini.com</p> <p>WALKER PARKING CONSULTANTS 2925 BAY AREA BLVD. SUITE 400 HOUSTON, TX 77058 281-280-0068 office 281-280-0373 fax FIRM CERTIFICATE OF AUTHORITY NUMBER F-004168</p>	<p>Drawing Title <b>STAIR/ELEVATOR ROOF FRAMING DETAILS</b></p> <p>Approved: Project Director</p>	<p>Project Title <b>PATIENT PARKING GARAGE EXPANSION</b> DEPARTMENT OF VETERANS AFFAIRS NORTH TEXAS VETERANS HEALTH CARE CENTER 4500 S. LANCASTER ROAD DALLAS, TEXAS 75216</p> <p>Location</p> <table border="1"><tr><td>Date Issue Date</td><td>Checked JEW</td><td>Drawn SOA</td></tr></table> <p>Project Number <b>549-906</b> Building Number 80</p> <p>Drawing Number <b>S-404</b> Dwg. 56 of 93</p> <p>Office of Construction and Facilities Management Department of Veterans Affairs</p>	Date Issue Date	Checked JEW	Drawn SOA
Date	Revisions																							
2-24-14	DD2 COST ESTIMATE SET																							
3-05-14	35% CD SET - NOT FOR CONSTRUCTION																							
4-30-14	65% CD SET - NOT FOR CONSTRUCTION																							
6-03-14	95% CD SET - NOT FOR CONSTRUCTION																							
7-15-14	100% CD SET																							
9-21-15	CLARIFICATION TO VEHICULAR ENTRY AND BUS SHELTER CANOPIES																							
<b>WOOLPERT ENGINEERING</b> 343 FOUNTAINS PARKWAY SUITE 100 FAIRVIEW HEIGHTS, IL 62208 618-632-7004 office 618-632-0100 fax	<b>DAVID MASON &amp; ASSOCIATES</b> 800 S. VANDEVENTER AVE. ST. LOUIS, MO 63110 314-534-1030 office 314-534-1053 fax	<b>SCI - GEOTECHNICAL ASSOCIATES</b> 130 POINT WEST BLVD. ST. CHARLES, MO 63301 636-949-8200 636-949-8269 fax																						
Date Issue Date	Checked JEW	Drawn SOA																						