



1112 N West Ave
Sioux Falls, SD 557104

phone (605) 336-1160
teamtsp.com

Addendum #1

Marshall - Marshalltown - Minneapolis - Rochester - Omaha - Rapid City - Sheridan - Sioux Falls

PROJECT:

Sioux Falls Department of VA
Specialty Med Addition
Sioux Falls, South Dakota

ADDENDUM NO.

002

DATE ISSUED:

September 25, 2015

BIDS DUE:

October 15, 2015

TSP PROJECT NUMBER: 04131193
VA# VA-263-P-1227

The following changes or modifications are to be incorporated into and become a part of the Contract Documents. The Bidder shall note receipt and make acknowledgement of this Addendum on the Bid Proposal, incorporating these provisions in the bid.

GENERAL:

ITEM NO: 1: N/A

PRODUCT APPROVALS:

The following manufacturers and products have been approved for bidding. Final acceptance is contingent upon receipt and approval of final shop drawings/submittals. Manufacturers shall conform to all warranties, performances, sizes, materials, etc. as the item specified. The burden of proof of the merit of the proposed substitution is upon the proposer.

N/A

PROJECT MANUAL:

ITEM NO: 1: Reference Specification Section, 01 23 00 Alternates:

Part 3, Subsection 3.1, A. Alternate No 1: Clarification for Part 2

Steel erection work hours are not included in this Alternate. Steel erection to occur after 4:30 PM as noted elsewhere in the documents.

ITEM NO: 2: Reference Specification Section, 01 23 00 Alternates:

Part 3, Subsection 3.1, G. Alternate No 7: Change Part 2 to read:

Alternate: Remove metal stud framing and gypsum board at underside of landings and stair runs in STAIR 8 and STAIR 10 as noted on sheets 5.AE111, 5.AE112, 5.AE302, and 5.AE531. Revise finishes as noted on sheet 5.IN601.

ITEM NO: 3: Reference Specification Section, 01 23 00 Alternates:

Part 3, Subsection 3.1, L. Alternate No 11: Change Part 2 to read:

Alternate: Not Applicable.

ITEM NO: 4: Reference Specification Section, 10 21 23 Cubicle Curtain Track System and Snap Curtains:

Specification Section 10 21 23 to be replaced in its entirety with attached Specification Section 10 21 23.



1112 N West Ave
Sioux Falls, SD 557104

phone (605) 336-1160
teamtsp.com

Addendum #1

Marshall - Marshalltown - Minneapolis - Rochester - Omaha - Rapid City - Sheridan - Sioux Falls

DRAWINGS:

ITEM NO: 1: Reference Drawings 5.AE401 & 5.AE402, ENLARGED PLANS:

Keynote 10 should be revised to read, "ALL EXPOSED STRUCTURAL STEEL IN STAIR TOWER TO BE PAINTED IN INTUMESCENT PAINT."

ITEM NO: 2: Reference Drawing 5.AE501, GENERAL DETAILS:

Under "WALL ASSEMBLY" for wall types "E4A" and "E3B/E4B/E6B", the note should read "FLUID APPLIED MEMBRANE AIR BARRIER" in lieu of "FLUID APPLIED MOISTURE BARRIER".

ITEM NO: 3: Reference Drawing 5.AE501, GENERAL DETAILS:

Under "WALL ASSEMBLY" for wall type "E4F", the reference to "FLUID APPLIED MOISTURE BARRIER" should be deleted in its entirety.

ITEM NO: 4: Reference Drawing 5.AE511, EXTERIOR AND ROOF DETAILS:

At details 1C and 3C, the note that reads "SPRAY FOAM INSULATION AT UNDERSIDE OF METAL DECK AND STRUCTURAL STEEL" should be revised to read "SPRAYED-ON FIREPROOFING AT UNDERSIDE OF METAL DECK AND STRUCTURAL STEEL."

ITEM NO: 5: Reference Drawing 5.AE513, EXTERIOR AND ROOF DETAILS:

At details 1B, 2B, 4B, 6B, 1D, 6D, 8D, 1F, 3F, 4F, and 6F, references to "MOISTURE BARRIER" should be revised to read "FLUID APPLIED MEMBRANE AIR BARRIER".

ITEM NO: 6: Reference Drawing 5.AE602, DOOR AND WINDOW DETAILS:

At detail 8D, reference to "FLUID APPLIED MOISTURE BARRIER" should be revised to read "FLUID APPLIED MEMBRANE AIR BARRIER".

ITEM NO: 7: Reference Drawing 5.IN601 ROOM FINISH SCHEDULE:

At Detail 1, Wall Tile Pattern (Typ) apply the changes as described in the Finish Materials Key to the following rooms listed in the Room Finish Schedule: 2021A, 2012B, 2021C, 2035, 2049, F05, F06. Changes to the Finish Materials Key are for products identified as:

- Wall tile: CT3, CT3A.
- Floor tile: PT1.
- Tile base: PTB1.
- Wall paint (P5).

ITEM NO: 8: Reference Drawing 5.IN601 Room Finish Schedule:

Ceiling tile (AT1) assigned to the following rooms: 2033, 2036 and 2038 should receive a cleanable ceiling tile (AT-2) as described in the Finish Materials Key.

ITEM NO: 9: Reference Drawing 5.IN601 Room Finish Schedule:

Cubicle Curtain (CC1): Use Snap 66 Fabrication method to match building standard. See Specifications 10 21 23.



Addendum #1

1112 N West Ave
Sioux Falls, SD 557104

phone (605) 336-1160
teamtsp.com

Marshall - Marshalltown - Minneapolis - Rochester - Omaha - Rapid City - Sheridan - Sioux Falls

ITEM NO: 10: Reference Drawing 5-MH101, Ground and Interstitial Level HVAC Plans:

Existing quench vent dimension updated. See detail on sheet 5-MH101.

ITEM NO: 11: Reference Drawing 5-MP101 & 5-MR101, Ground and Interstitial Level Piping Plans and Mechanical Roof Plan:

Remove Alternate #11 references. See sheet 5-MP101.

ITEM NO: 12: Reference Drawing 5-MH102, Second Level HVAC Plan:

Change note #7 to state 16"Ø Stainless steel exhaust up/dn. Tight to exterior wall. Route above parapet and terminate above new roof with gooseneck. See detail on sheet 5-MH101.

ATTACHMENTS:

- Specification Section: VA 10 21 23 Cubicle Curtain System and Snap Curtains
- Drawing IN601 Room Finish Schedule
- Drawings 5-MH101, 5-MP101, and 5-MR101

END OF ADDENDUM



Addendum #1

1112 N West Ave
Sioux Falls, SD 557104

phone (605) 336-1160
teamtsp.com

Marshall - Marshalltown - Minneapolis - Rochester - Omaha - Rapid City - Sheridan - Sioux Falls

SECTION 10 21 23
CUBICLE CURTAIN TRACK SYSTEM AND SNAP CURTAINS

PART 1 - GENERAL

1.1 DESCRIPTION

- A. This section specifies cubicle curtain track (C.C.T.).

1.2 RELATED WORK

- A. Steel shapes for suspending track assembly: Section 05 50 00, METAL FABRICATIONS and Section 09 51 00, ACOUSTICAL CEILINGS.

1.3 SUBMITTALS

- A. Submit in accordance with Section 01 33 23, SHOP DRAWINGS, PRODUCT DATA, AND SAMPLES.
- B. Samples:
1. One 300 mm (12 inch) long piece of cubicle curtain track with carrier access and end stop.
 2. One clip anchor for fastening track to grid system of acoustical ceilings.
 3. One curtain carrier.
- C. Shop Drawings: Showing layout of tracks and method of anchorage.
- D. Manufacturer's Literature and Data:
Cubicle curtain track.

1.4 DELIVERY, STORAGE AND HANDLING

- A. Deliver material in original package marked to identify the contents, brand name, and the name of the manufacturer or supplier.
- B. Store in dry and protected location. Store so as to not bend or warp the tracks.
- C. Do not open packages until contents are needed for installation, unless verification inspection is required.

1.5 APPLICABLE PUBLICATIONS

- A. The publications listed below form a part of this specification to the extent referenced. The publications are referenced in the text by the basic designation only.
- B. American Society for Testing and Materials (ASTM):
- B221-08.....Aluminum and Aluminum-Alloy Extruded Bars, Rods, Wire, Shapes, and Tubes.
- B456-03 (R2009).....Electrodeposited Coatings for Copper Plus Nickel Plus Chromium and Nickel Plus Chromium
- C. The National Association of Architectural Metal Manufacturers (NAAMM):
- AMP 500 Series.....Metal Finishes Manual

PART 2 - PRODUCTS

2.1 CUBICLE CURTAIN TRACKS

- A. Surface mounted type:
 - 1. Basis of design product: Extruded-Aluminum Track No. 1200 for surface mount, or Extruded-Aluminum Suspended Track No. 1100 for suspended track. Contractor to use as VA standard.
 - 2. Channel Tracks (Surface Mounted Type): Extruded aluminum, ASTM B221, alloy 6063, temper T5 or T6, channel shaped, with smooth inside raceway for curtain carriers.
- B. Curtain Carriers: Nylon, with either nylon wheels on metal, or nylon axles. Equip each carrier with either stainless steel, chromium plated brass or steel hooks with swivel, or nickel chromium plated brass or stainless steel bead chain and hook assembly, or delrin carriers may have moulded on delrin hooks. Hook for bead chain may be the same material and finish as the bead chain or may be chromium plated steel. Provide 2.2 carriers for every 300 mm (onefoot) of each section of each track length, plus one additional carrier.
- C. End Stop Connectors, Ceiling Flanges and Other Accessories: Fabricate from the same material with the same finish as the tracks or from nylon.
- D. Hangers and Fittings: Fabricate from the same material with the same finish as the tracks. Hangers may be round or square for channel tracks and round for tubular tracks. Design fittings to be compatible with design of tracks and to safely transmit the track load to the hangers.
- E. At end of each section of track, make provision for insertion and removal of carriers. Design to prevent accidental removal of carrier. Any operating mechanism shall be removable with common tools.

2.2 FASTENERS

- A. Exposed Fasteners, Screws and Bolts: connector snap-system Nickel Plated Brass / machine set.
- B. Concealed Fasteners, Screws and Bolts: connector snap-system Nickel Plated Brass / machine set.
- C. Metal Clips: Anchor curtain tracks to exposed grid of lay-in acoustical tile ceilings, with concealed metal (butterfly) type or two piece snap locking type ceiling clip of high strength spring steel. When it is not possible to install the metal ceiling clip, the cubicle curtain track may be screwed to the ceiling grid.

2.3 FINISHES

- A. Aluminum: Finish numbers for aluminum specified are in accordance with The Aluminum Association's Designation System. AA-C22A31 finish Chemically etched medium matte, with clear anodic coating, Class II Architectural, 0.4 mils thick.
- B. Chrome/Nickel Plating: Satin or polished finish as specified, ASTM B546, minimum thickness of chromium plate as follows:
 - 1. 0.2 mil on copper alloys.
 - 2. 0.4 mil on steel.

2.4 FABRICATION

- A. Weld and grind smooth joints of fabricated components.
- B. Form tracks and bends of lengths that will produce the minimum number of joints. Make track sections up to 4800 mm (16 feet) without joints. Form corner bend on a 300 mm (12 inch) radius.
- C. Provide steel anchor plates, supports, and anchors for securing components to building construction.
- D. Form flat surface without distortion.
- E. Shop assemble components and package complete with anchors and fittings.

2.5 CURTAINS

- A. Curtain Fabric: Cubicle manufacturer's standard as follows:
 - 1. Fiber Content: 100 percent polyester, inherently and permanently flame resistant. Complies with NFPA 701 fire code standards. Fabrics are launderable to a temperature of not more than 140 degrees Fahrenheit.
 - 2. Products: Subject to compliance with requirements, provide the following:
 - a. Color and pattern and location in room finish schedule:
Sheet 5.IN601 ROOM FINISH SCHEDULE AND FINISH KEY.
- B. Mesh: Double turned with 1-1/4 inch fire retardant reinforced tape sewn into top, side and bottom hems of mesh. White or beige antimicrobial nylon mesh with openings having a minimum of 70 percent open (1/2" diagonal). #2 grommets to be made of nickel-plated brass that are machined and placed six (6) inches on center. Along bottom horizontal width of mesh, a connector snap-system of Nickel Plated Brass/machine set with nickel-plated brass silver cap cover is to be machined in place and set at 4-9/16 inch on center.

- C. Curtin Snaps: At top horizontal width, of 66"W x 66"L panels double-sided connector snap system made of Nickel Plated Brass and machine set with nickel-plated brass silver cap cover is to be machined in place and set at 4-9/16 inch on center and machined into top header of every curtain panel.

2.6 CURTAIN FABRICATION

- A. Fabricate curtains to comply with the following requirements:
1. Horizontal Width: Finished panel width is 66" horizontal. Panel to be manufactured with 1-1/4" double turned lock-stitch double needle hems on all four (4) sides. At top horizontal width, of 66"W x 66"L panels a double-sided connector snap-system made of Nickel Plated Brass and machine set with nickel-plated brass silver cap cover is to be machined in place and set at 4-9/16 inch on center and machined into top header of every curtain panel.
Vertical Length: Finished vertical length is set at only one finished size of 66" so that every manufactured panel will fit every track application using the VA's panel system standard.
 2. Mesh: Mesh to be double-turned with reinforced header tape along top, side and bottom hems and stitched with double needle lock stitch no less than 1-1/4 inch in width.
 3. Mesh to be manufactured in one horizontal continuous piece too fit each room track. The continuous mesh is rounded up to the track size in 56" increments.
 4. Finished vertical mesh to be manufactured to fit a specific facility application of track installation so that the finished vertical size of each mesh is equal to ceiling to floor (tight measure) minus 66" panel size and minus 10-12" floor to curtain clearance.

PART 3 - EXECUTION

3.1 INSTALLATION

- A. Install tracks after finish painting and ceiling finishing operations are complete.
- B. Install track level and hangers plumb and securely anchor to the ceiling to form a rigid installation.
- C. Anchor surface mounted curtain tracks directly to exposed grid of lay-in acoustical tile ceilings with suitable fasteners, spaced approximately 600 mm (24 inches) on center.

- D. Anchor surface mounted curtain tracks to plaster and gypsum board ceilings with a minimum of 3 mm (1/8-inch) diameter fastenings or concealed clips spaced not more than 900 mm (three feet) on center.
- E. Securely fasten end stop caps to prevent their being forced out by the striking weight of carriers.
- G. Remove damaged or defective components and replace with new components or repair to the original condition.

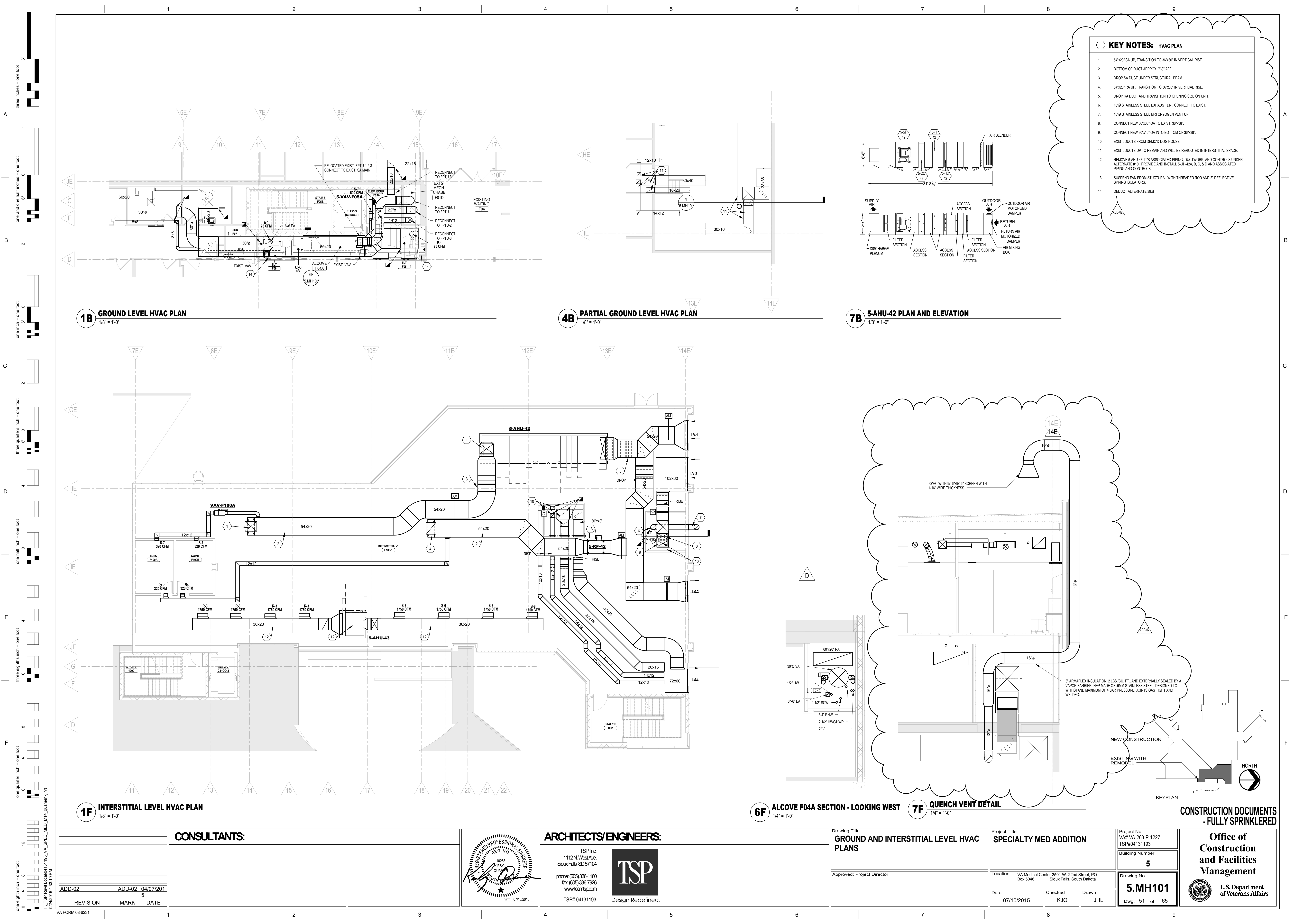
3.2 ACCEPTANCE

- A. Track shall be installed neat, rigid, plumb, level and true, and securely anchored to the overhead construction.
- B. Carrier units shall operate smoothly and easily over the full range of travel.

- - - E N D - - -

09/25/2015 VA Health Care System
Specialty Medicine Addition
Sioux Falls, South Dakota
100% Construction Documents
VA Project No. VA-263-P-227
TSP Project No. 04131193

THIS PAGE INTENTIONALLY LEFT BLANK



CONSULTANTS:

REVISION	MARK	DATE
ADD-02	ADD-02	04/07/201
	5	

ARCHITECTS/ENGINEERS:

TSP, Inc.
1112N West Ave,
Sioux Falls, SD 57104
phone: (605) 336-1190
fax: (605) 336-7926
www.tspinc.com

TSP# 04131193



Drawing Title
GROUND AND INTERSTITIAL LEVEL HVAC PLANS

Approved: Project Director

Project Title
SPECIALTY MED ADDITION

Location VA Medical Center 2501 W. 22nd Street, PO Box 5046
Sioux Falls, South Dakota

Date 07/10/2015

Checked KJQ

Drawn JHL

Project No.
VA# VA-263-P-1227
TSP#04131193

Building Number
5

Drawing No.
5.MH101

Dwg. 51 of 65

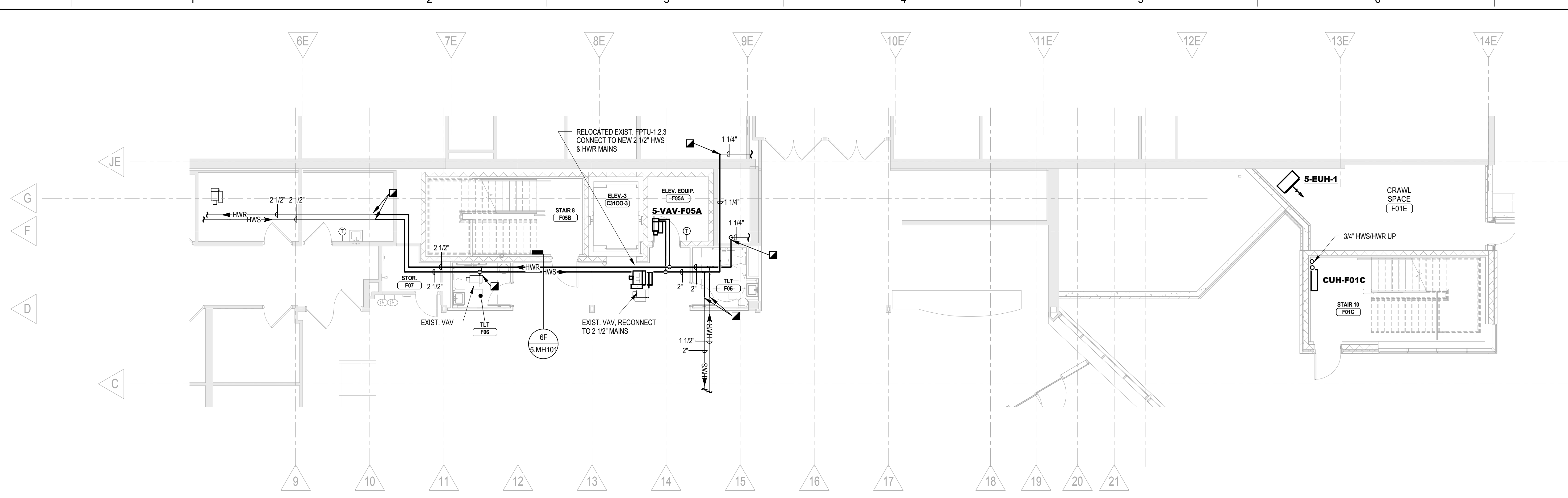
CONSTRUCTION DOCUMENTS
-FULLY SPRINKLERED

Office of
Construction
and Facilities
Management

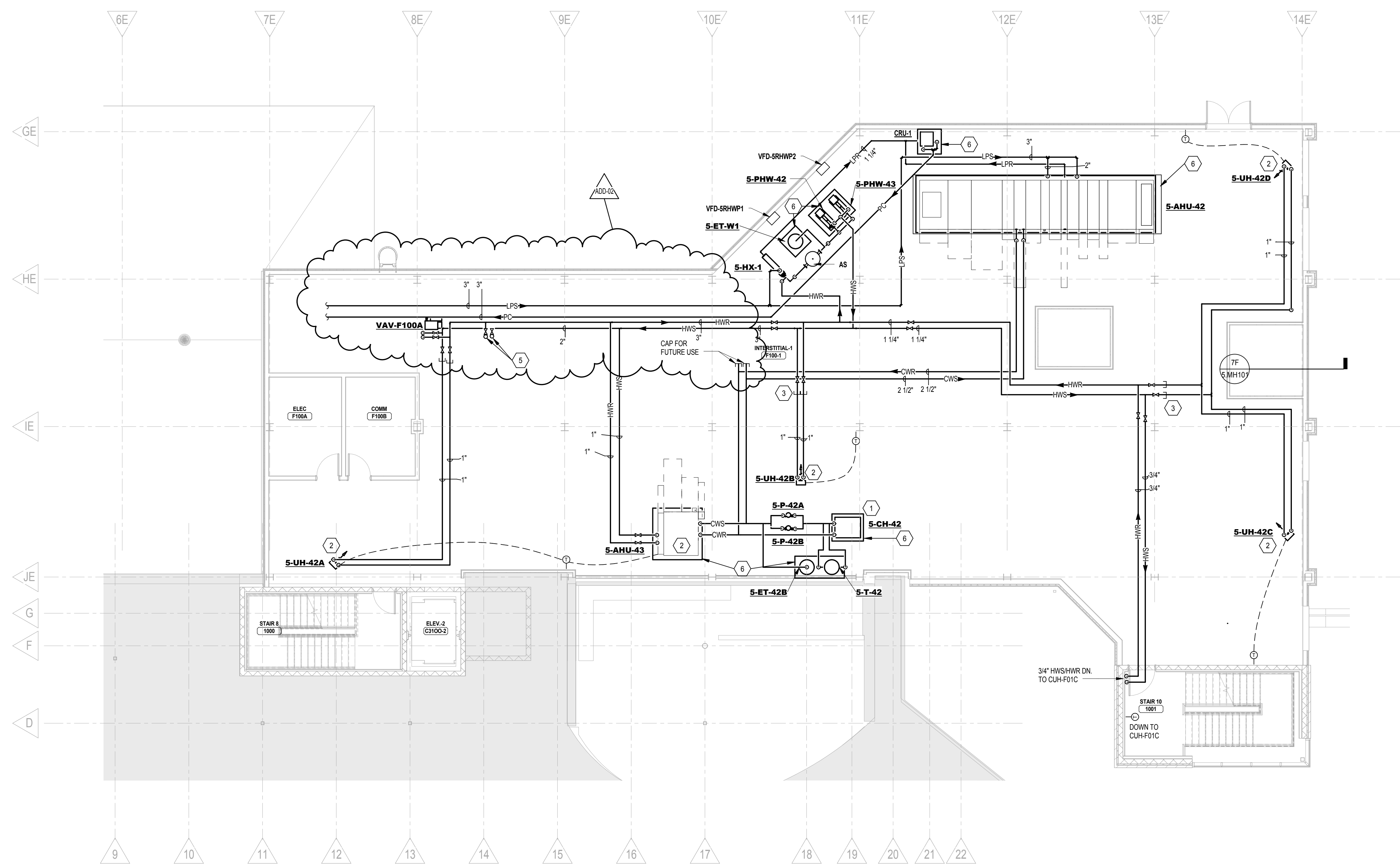


U.S. Department
of Veterans Affairs

three inches = one foot
one and one half inches = one foot
one inch = one foot
three quarters inch = one foot
one half inch = one foot
three eighths inch = one foot
one quarter inch = one foot
one eighth inch = one foot



1C GROUND LEVEL PIPING PLAN
1/8" = 1'-0"

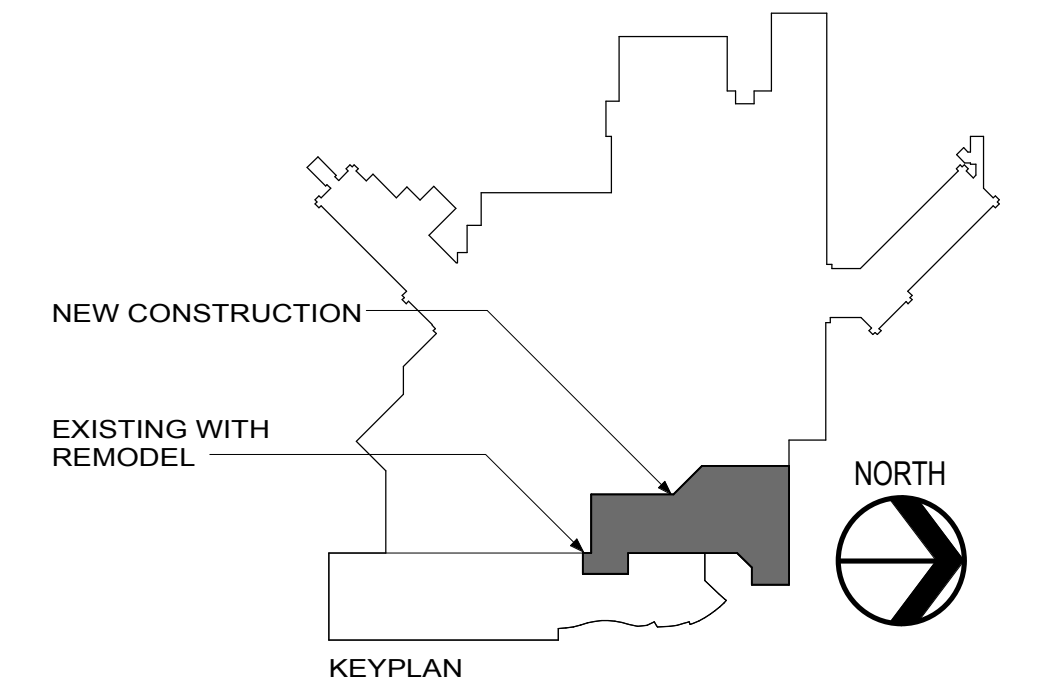


1F INTERSTITIAL LEVEL PIPING PLAN
1/8" = 1'-0"

- KEY NOTES: PIPING PLAN**
1. PROVIDE 1-3/8" REFRIGERANT LINES FROM S-CH-42 UP TO S-CU-42 ON ROOF (X4). ROUTE REFRIGERATION LINES BY COLUMN NEAR GRIDLINE 10 AND IE ON THIS SHEET AND MP102. SEE SHEET MR101 FOR LOCATION OF S-CU-42 CONDENSER ON ROOF.
 2. REMOVE S-AHU-43 AND ITS ASSOCIATED PIPING, DUCTWORK, AND CONTROLS UNDER ALTERNATE #10. PROVIDE AND INSTALL S-UH-42A, B, C, & D AND ASSOCIATED PIPING AND CONTROLS.
 3. CAP IN BASE BID REMOVE FOR ALT 10.
 4. NOT USED.
 5. 2" HWS UP, 2" HWR UP PROVIDE ISOLATION VALVES.
 6. 4" CONCRETE PAD.

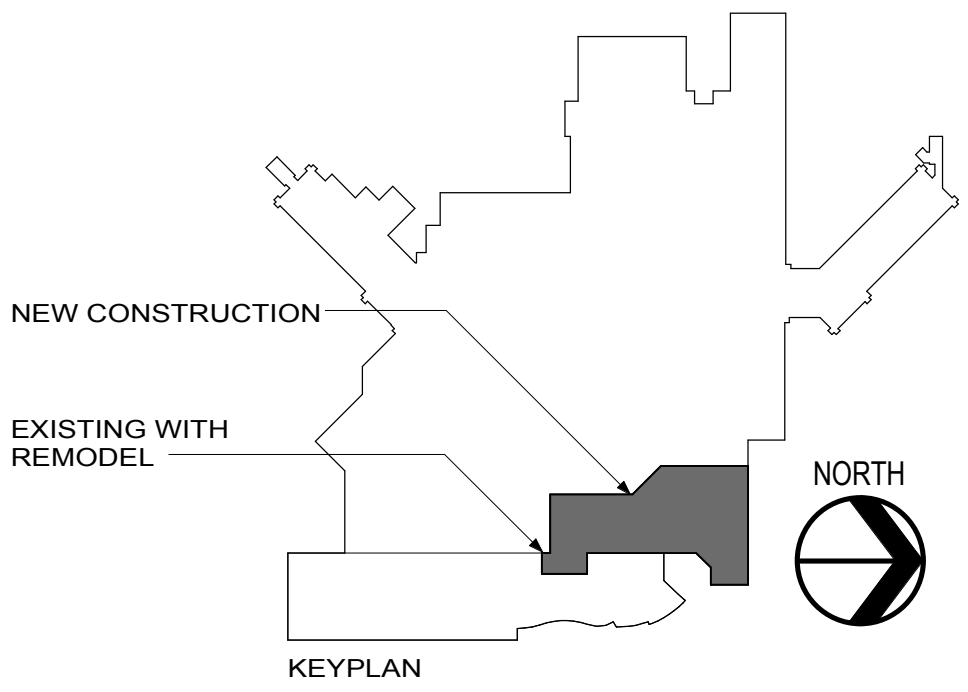
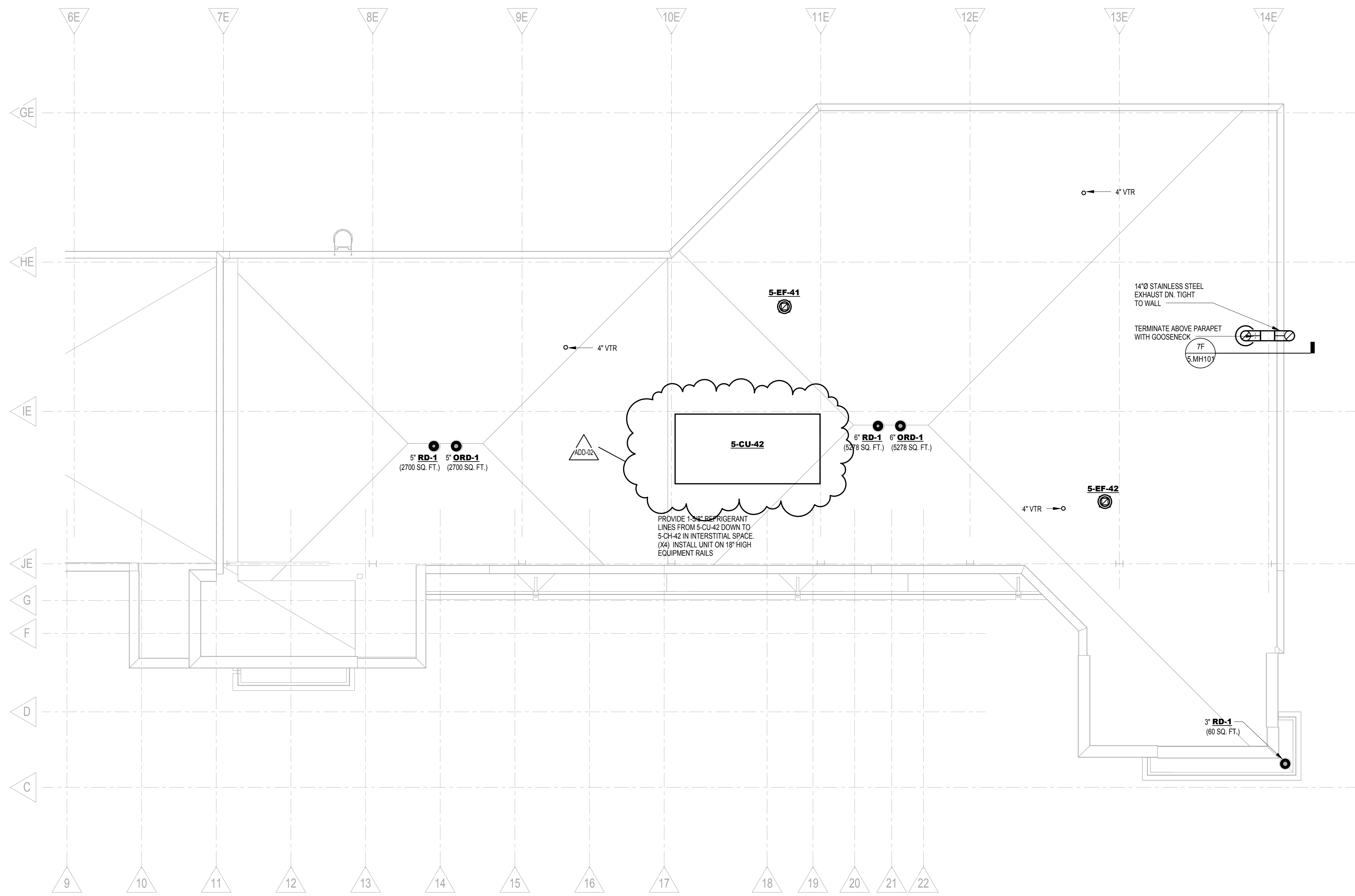
HEATING WATER PIPE RUNOUT SCHEDULE	
GPM	PIPE SIZE
0-0.8	1/2"
0.9-2.6	3/4"
2.7-5.5	1"
5.6-9.75	1 1/4"
9.76-15	1 1/2"
15.1-33.0	2"
33.1-60.0	2 1/2"
60.1-95.0	3"
95.1-210.0	4"

ALL RUNOUT PIPING TO EQUIPMENT SHALL BE SIZED PER THIS SCHEDULE UNLESS OTHERWISE SHOWN ON PLANS



<table><tr><td>REVISION</td><td>MARK</td><td>DATE</td></tr><tr><td> </td><td> </td><td> </td></tr><tr><td> </td><td> </td><td> </td></tr><tr><td> </td><td> </td><td> </td></tr><tr><td> </td><td> </td><td> </td></tr><tr><td> </td><td> </td><td> </td></tr></table>			REVISION	MARK	DATE																CONSULTANTS:						ARCHITECTS/ENGINEERS: TSP, Inc. 1112N West Ave, Sioux Falls, SD 57104 phone: (605) 336-1190 fax: (605) 336-7926 www.bsamtsp.com TSP# 04131193 Design Redefined.			Drawing Title GROUND AND INTERSTITIAL LEVEL PIPING PLANS			Project Title SPECIALTY MED ADDITION			Project No. VA# VA-263-P-1227 TSP#04131193 Building Number 5			Office of Construction and Facilities Management		
REVISION	MARK	DATE																																							
Approved: Project Director			Location VA Medical Center 2501 W. 22nd Street, PO Box 5046 Sioux Falls, South Dakota			Date 07/10/2015			Checked KJQ			Drawn JHL			Drawing No. 5.MP101 Dwg. 53 of 65			U.S. Department of Veterans Affairs																							

one eighth inch = one foot
one quarter inch = one foot
three eighths inch = one foot
one half inch = one foot
three quarters inch = one foot
one inch = one foot
one and one half inches = one foot
two inches = one foot
three inches = one foot
four inches = one foot
five inches = one foot
six inches = one foot
seven inches = one foot
eight inches = one foot
nine inches = one foot
ten inches = one foot
eleven inches = one foot
twelve inches = one foot
thirteen inches = one foot
fourteen inches = one foot
fifteen inches = one foot
sixteen inches = one foot
seventeen inches = one foot
eighteen inches = one foot
nineteen inches = one foot
twenty inches = one foot
twenty one inches = one foot
twenty two inches = one foot
twenty three inches = one foot
twenty four inches = one foot
twenty five inches = one foot
twenty six inches = one foot
twenty seven inches = one foot
twenty eight inches = one foot
twenty nine inches = one foot
thirty inches = one foot
thirty one inches = one foot
thirty two inches = one foot
thirty three inches = one foot
thirty four inches = one foot
thirty five inches = one foot
thirty six inches = one foot
thirty seven inches = one foot
thirty eight inches = one foot
thirty nine inches = one foot
forty inches = one foot
forty one inches = one foot
forty two inches = one foot
forty three inches = one foot
forty four inches = one foot
forty five inches = one foot
forty six inches = one foot
forty seven inches = one foot
forty eight inches = one foot
forty nine inches = one foot
fifty inches = one foot
fifty one inches = one foot
fifty two inches = one foot
fifty three inches = one foot
fifty four inches = one foot
fifty five inches = one foot
fifty six inches = one foot
fifty seven inches = one foot
fifty eight inches = one foot
fifty nine inches = one foot
sixty inches = one foot
sixty one inches = one foot
sixty two inches = one foot
sixty three inches = one foot
sixty four inches = one foot
sixty five inches = one foot
sixty six inches = one foot
sixty seven inches = one foot
sixty eight inches = one foot
sixty nine inches = one foot
seventy inches = one foot
seventy one inches = one foot
seventy two inches = one foot
seventy three inches = one foot
seventy four inches = one foot
seventy five inches = one foot
seventy six inches = one foot
seventy seven inches = one foot
seventy eight inches = one foot
seventy nine inches = one foot
eighty inches = one foot
eighty one inches = one foot
eighty two inches = one foot
eighty three inches = one foot
eighty four inches = one foot
eighty five inches = one foot
eighty six inches = one foot
eighty seven inches = one foot
eighty eight inches = one foot
eighty nine inches = one foot
ninety inches = one foot
ninety one inches = one foot
ninety two inches = one foot
ninety three inches = one foot
ninety four inches = one foot
ninety five inches = one foot
ninety six inches = one foot
ninety seven inches = one foot
ninety eight inches = one foot
ninety nine inches = one foot
one hundred inches = one foot



1F MECHANICAL ROOF PLAN
1/8" = 1'-0"

<table><tr><td>ADD-02</td><td>ADD-02</td><td>04/07/2015</td></tr><tr><td>REVISION</td><td>MARK</td><td>DATE</td></tr></table>			ADD-02	ADD-02	04/07/2015	REVISION	MARK	DATE	CONSULTANTS:			ARCHITECTS/ENGINEERS: TSP, Inc. 1112 N. West Ave. Sioux Falls, SD 57104 phone: (605) 336-1190 fax: (605) 336-7926 www.bsamtsp.com TSP# 04131193 Design Redefined.		<table><tr><td colspan="2">Drawing Title MECHANICAL ROOF PLAN</td></tr><tr><td colspan="2">Approved: Project Director</td></tr></table>		Drawing Title MECHANICAL ROOF PLAN		Approved: Project Director		<table><tr><td colspan="2">Project Title SPECIALTY MED ADDITION</td></tr><tr><td colspan="2">Location VA Medical Center 2501 W. 22nd Street, PO Box 5046 Sioux Falls, South Dakota</td></tr><tr><td>Date 07/10/2015</td><td>Checked KJQ</td></tr><tr><td colspan="2">Drawn JHL</td></tr></table>		Project Title SPECIALTY MED ADDITION		Location VA Medical Center 2501 W. 22nd Street, PO Box 5046 Sioux Falls, South Dakota		Date 07/10/2015	Checked KJQ	Drawn JHL		<table><tr><td>Project No. VA# VA-263-P-1227 TSP#04131193 Building Number 5</td></tr><tr><td>Drawing No. 5.MR101 Dwg. 55 of 65</td></tr></table>	Project No. VA# VA-263-P-1227 TSP#04131193 Building Number 5	Drawing No. 5.MR101 Dwg. 55 of 65	<table><tr><td></td><td>Office of Construction and Facilities Management U.S. Department of Veterans Affairs</td></tr></table>			Office of Construction and Facilities Management U.S. Department of Veterans Affairs
ADD-02	ADD-02	04/07/2015																																		
REVISION	MARK	DATE																																		
Drawing Title MECHANICAL ROOF PLAN																																				
Approved: Project Director																																				
Project Title SPECIALTY MED ADDITION																																				
Location VA Medical Center 2501 W. 22nd Street, PO Box 5046 Sioux Falls, South Dakota																																				
Date 07/10/2015	Checked KJQ																																			
Drawn JHL																																				
Project No. VA# VA-263-P-1227 TSP#04131193 Building Number 5																																				
Drawing No. 5.MR101 Dwg. 55 of 65																																				
	Office of Construction and Facilities Management U.S. Department of Veterans Affairs																																			