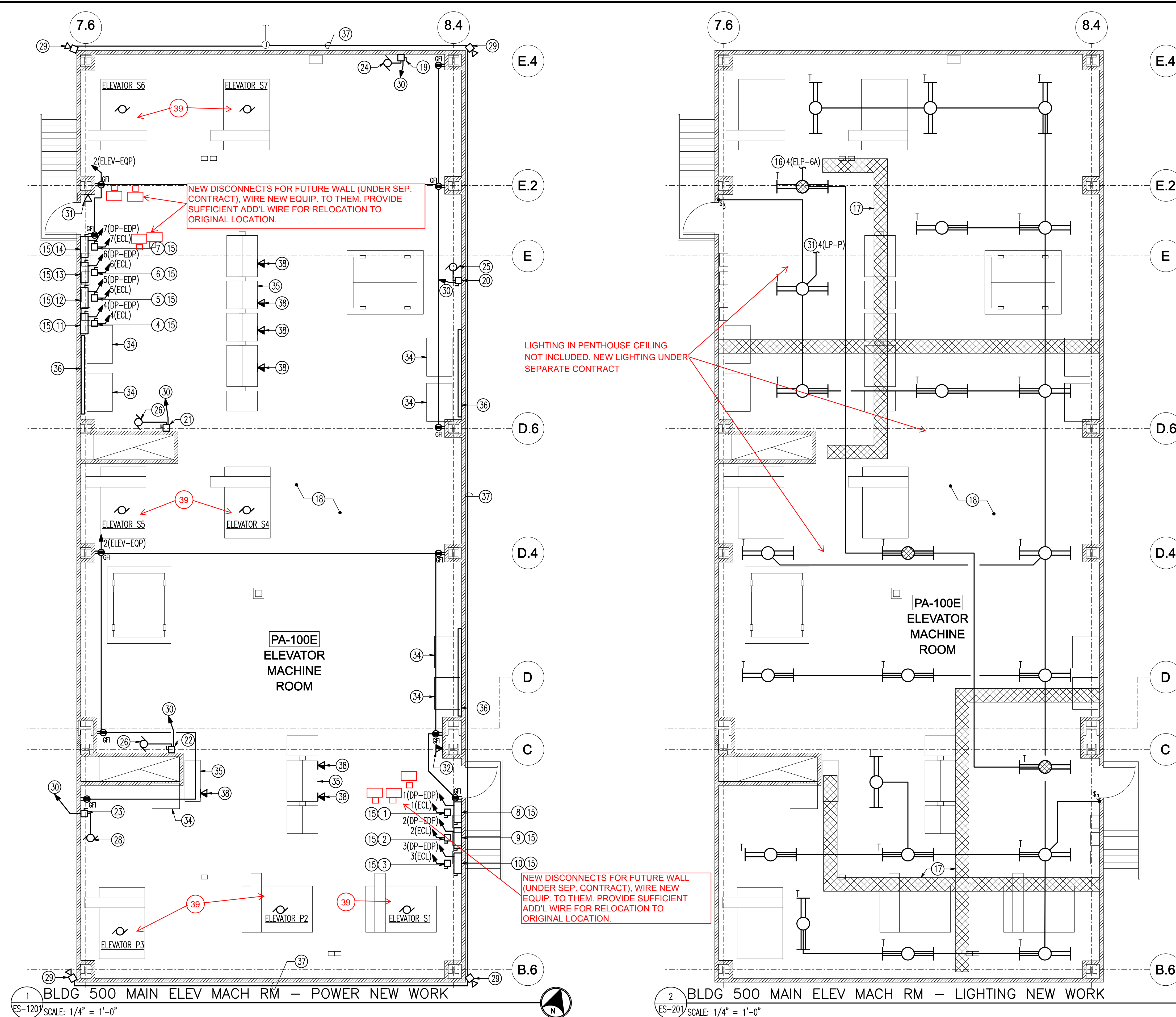
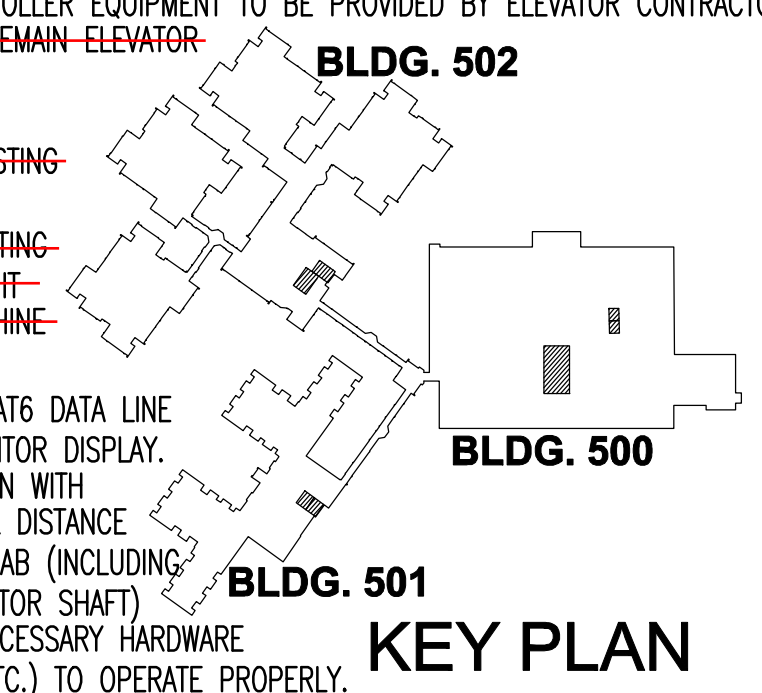


three eighths inch = one foot  
one half inch = one foot  
three quarters inch = one foot  
one inch = one foot  
one and one half inches = one foot  
two inches = one foot  
three inches = one foot



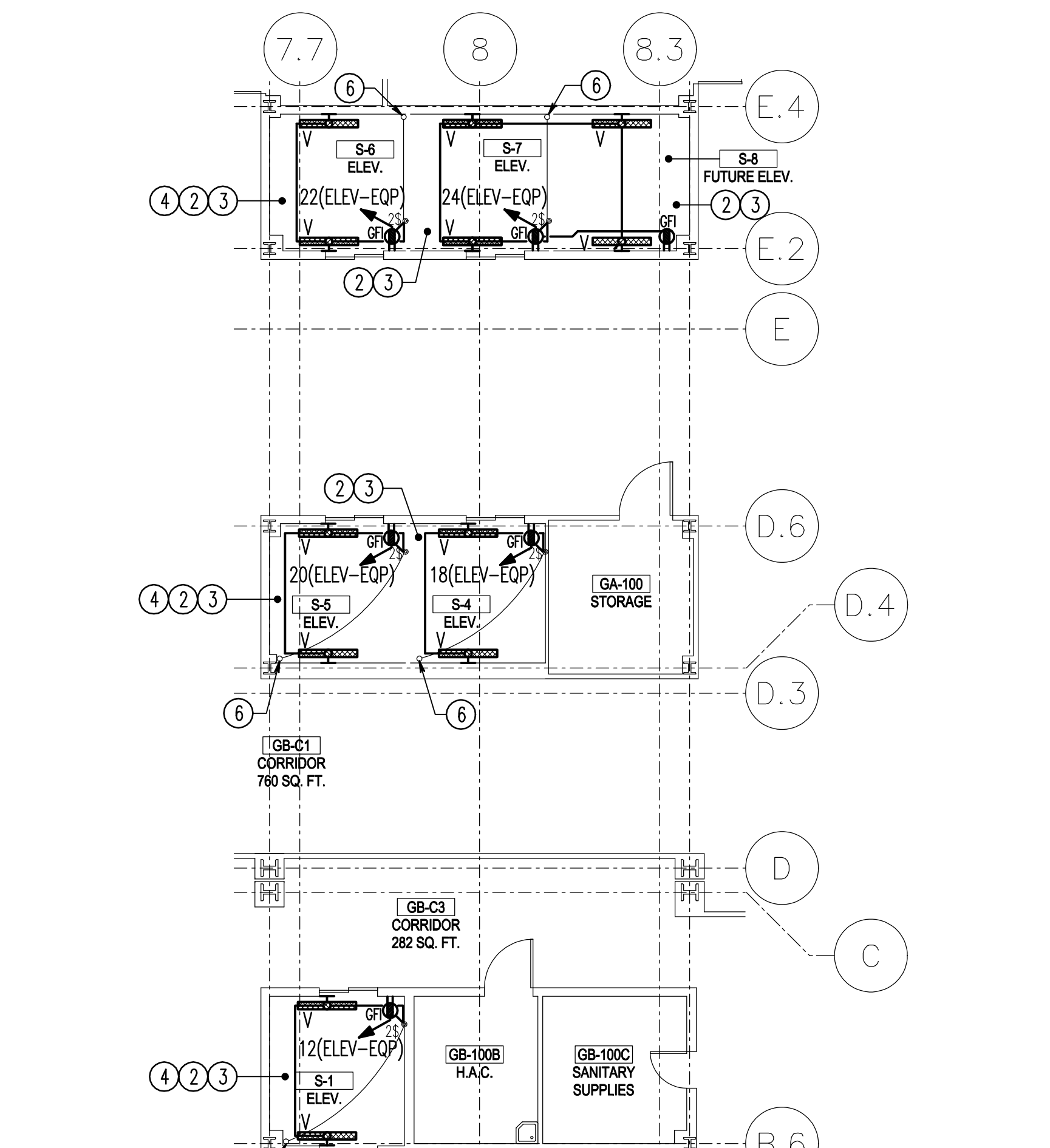
- DRAWING NOTES: (APPLICABLE TO THIS DRAWING ONLY)
- D.1 UNLESS OTHERWISE NOTED, ELECTRICAL ITEMS SHOWN HEAVY SOLID (—) SHALL BE NEW, AND ELECTRICAL ITEMS SHOWN LIGHT SOLID (---) SHALL BE EXISTING TO REMAIN.
- D.2 INFORMATION SHOWN ON THIS DRAWING PERTAINING TO EXISTING CONDITIONS HAS BEEN OBTAINED FROM AVAILABLE BUILDING DRAWINGS OR GENERAL FIELD OBSERVATIONS AND MAY NOT INDICATE ACTUAL EXISTING CONDITIONS IN DETAIL OR DIMENSION. THE CONTRACTOR IS RESPONSIBLE FOR DETERMINING THE ACTUAL EXISTING CONDITIONS PRIOR TO DEMOLITION OR PERFORMANCE OF ANY WORK. SHOULD CONDITIONS BE DISCOVERED THAT PREVENT EXECUTION OF THE WORK AS INDICATED, THE CONTRACTOR SHALL IMMEDIATELY NOTIFY THE ENGINEER IN WRITING AND AWAIT DIRECTION BEFORE PROCEEDING WITH THE WORK.
- D.3 REFER TO DRAWING ES-501 FOR DISCONNECT AND EQUIPMENT SCHEDULE FOR ADDITIONAL INFORMATION.
- SPECIAL NOTES: (APPLICABLE TO THIS DRAWING ONLY)
- DS-ELEV-S1-CAB. FOR CAB LIGHTING, RECEPTACLE AND VENTILLATION. (MOUNTED BELOW)
  - DS-ELEV-P2-CAB. FOR CAB LIGHTING, RECEPTACLE AND VENTILLATION. (MOUNTED BELOW)
  - DS-ELEV-P3-CAB. FOR CAB LIGHTING, RECEPTACLE AND VENTILLATION. (MOUNTED BELOW)
  - DS-ELEV-S4-CAB. FOR CAB LIGHTING, RECEPTACLE AND VENTILLATION. (MOUNTED BELOW)
  - DS-ELEV-S5-CAB. FOR CAB LIGHTING, RECEPTACLE AND VENTILLATION. (MOUNTED BELOW)
  - DS-ELEV-S6-CAB. FOR CAB LIGHTING, RECEPTACLE AND VENTILLATION. (MOUNTED BELOW)
  - DS-ELEV-S7-CAB. FOR CAB LIGHTING, RECEPTACLE AND VENTILLATION. (MOUNTED BELOW)
  - DS-ELEV-S1. FOR MAIN ELEVATOR POWER (MOUNTED ABOVE)
  - DS-ELEV-P2. FOR MAIN ELEVATOR POWER (MOUNTED ABOVE)
  - DS-ELEV-P3. FOR MAIN ELEVATOR POWER (MOUNTED ABOVE)
  - DS-ELEV-S4. FOR MAIN ELEVATOR POWER (MOUNTED ABOVE)
  - DS-ELEV-S5. FOR MAIN ELEVATOR POWER (MOUNTED ABOVE)
  - DS-ELEV-S6. FOR MAIN ELEVATOR POWER (MOUNTED ABOVE)
  - DS-ELEV-S7. FOR MAIN ELEVATOR POWER (MOUNTED ABOVE)
  - MOUNT TO METAL CHANNEL SYSTEM. DO NOT MOUNT DIRECTLY TO WALL. REFER TO DETAIL 1/ES401.
  - CONNECT TO EXISTING 277V EMERGENCY POWER LIGHTING CIRCUIT SERVING THIS AREA.
  - EXISTING WIREWAY (APPROX 9'AFF) FOR ELEVATOR WIRING. REFER TO ELEVATOR CONTRACTOR'S DRAWINGS FOR ASSOCIATED WORK.
  - COORDINATE EXACT LOCATION OF ELECTRICAL DEVICES IN THIS ROOM WITH ELEVATOR CONTRACTOR.
  - ~~DS-ACU-1~~
  - ~~DS-ACU-2~~
  - ~~DS-ACU-3~~
  - ~~DS-ACU-4~~
  - ~~DS-ACU-5~~
  - ~~ACU-1~~
  - ~~ACU-2~~
  - ~~ACU-3~~
  - ~~ACU-4~~
  - ~~ACU-5~~
  - REINSTALL EXISTING PUBLIC ADDRESS SPEAKER WHICH WAS REMOVED AS INDICATED ON DRAWING ES-101.
  - CONNECT TO SAME POWER SOURCE AS EXISTING CONDENSOR UNIT (ACCU). CONDUIT AND WIRING ROUTING SHALL FOLLOW MECHANICAL PIPING. REFER TO MECHANICAL DRAWINGS. PROVIDE INTERLOCK WIRING IN CONDUIT TO EXISTING UNIT.
  - CONNECT TO EXISTING 277V NORMAL POWER LIGHTING CIRCUIT SERVING THIS AREA.
  - PROVIDE GRAY JACKETED CAT5e PHONE LINE TO NEAREST TELEPHONE/DATA CLOSET.
  - PROVIDE GRAY JACKETED CAT5e PHONE LINE AND BLUE JACKETED CAT5e DATA LINE TO NEAREST TELEPHONE/DATA CLOSET.
  - BASE BID: THIS EXISTING ISOLATION TRANSFORMER WILL NOT EXIST.  
~~DEDUCT 1 WORK: EXISTING TO REMAIN ISOLATION TRANSFORMER.~~
  - BASE BID: NEW ELEVATOR CONTROLLER EQUIPMENT TO BE PROVIDED BY ELEVATOR CONTRACTOR.  
~~DEDUCT 1 WORK: EXISTING TO REMAIN ELEVATOR CONTROLLER EQUIPMENT.~~
  - BASE BID: THIS WILL NOT EXIST.  
~~DEDUCT 1 WORK: REINSTALL EXISTING WIREWAY.~~
  - SPEAKER WIRING TO MATCH EXISTING IN 3/4" CONDUIT. ROUTE CONDUIT ON EXTERIOR OF ELEVATOR MACHINE ROOM.
  - PROVIDE ONE BLUE JACKETED CAT6 DATA LINE FOR EACH ELEVATOR CAB'S MONITOR DISPLAY. COORDINATE DATA DROP LOCATION WITH ELEVATOR CONTRACTOR. IF TOTAL DISTANCE FROM IT CLOSET TO ELEVATOR CAB (INCLUDING TRAVELLER CABLES INSIDE ELEVATOR SHAFT) EXCEEDS 295 FEET, PROVIDE NECESSARY HARDWARE (SWITCH, FIBER OPTIC WIRING, ETC.) TO OPERATE PROPERLY.
- NOTE D4. PHASING. REM. & REPLACE ONE ELEVATOR AT A TIME. ORDER OF PREFERENCE: P2, THEN P3, S6, S7, S5, S4, AND FINALLY S1.
- 1/4" = 1' - 0"
- 0 2 4 8 12 FT



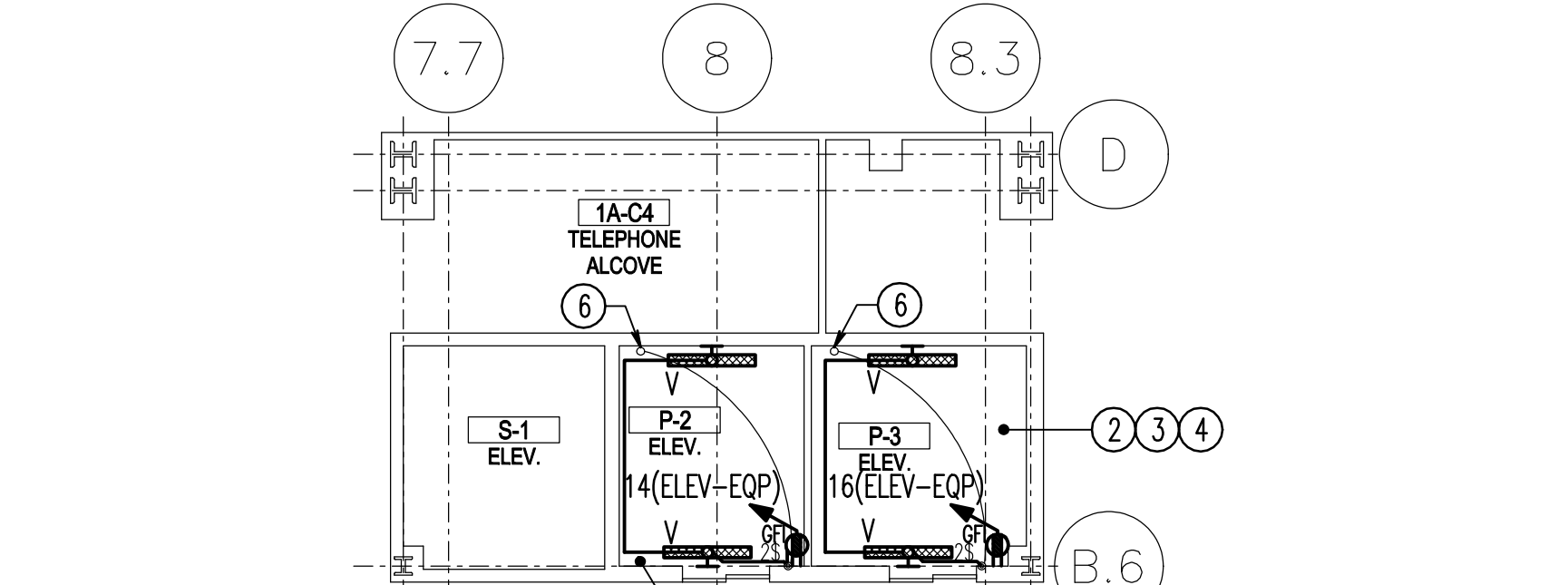
<b>CONSULTANTS</b>		<b>ARCHITECTS</b>		Drawing Title <b>BUILDING 500 PENTHOUSE MEZZANINE LEVEL - ELECTRICAL NEW WORK</b>		Project Title <b>VAMC Martinsburg Building Elevator Upgrades</b>		Project Number <b>613-13911-134</b>		<b>Department of Veterans Affairs</b>	
				Approved: Project Director		Location		Building Number <b>500, 501 &amp; 502</b>			
TRANSPORTATION ROBERT L. SEYMOUR & ASSOCIATES, INC. 162 Thomas Johnson Drive SUITE 200 FREDERICK, MARYLAND 21702		STRUCTURAL ENGINEER HENRY ADAMS 1620 S. LOUDOUN STREET SUITE 200 WINCHESTER, VA 22601		FIRE PROTECTION ENGINEERS KOFFEL ASSOCIATES, INC. 8815 CENTRE PARK DRIVE SUITE 200 COLUMBIA, MD 21045-2107		COST ESTIMATING ALPHA CORPORATION 1600 WASHINGTON BOULEVARD SUITE 425 BALTIMORE, MD 21203		Date <b>MAY 31, 2012</b>		Checked <b>JDT</b>	
7/13/15		Date				Date		Drawn <b>ADP</b>		<b>ES-201</b>	



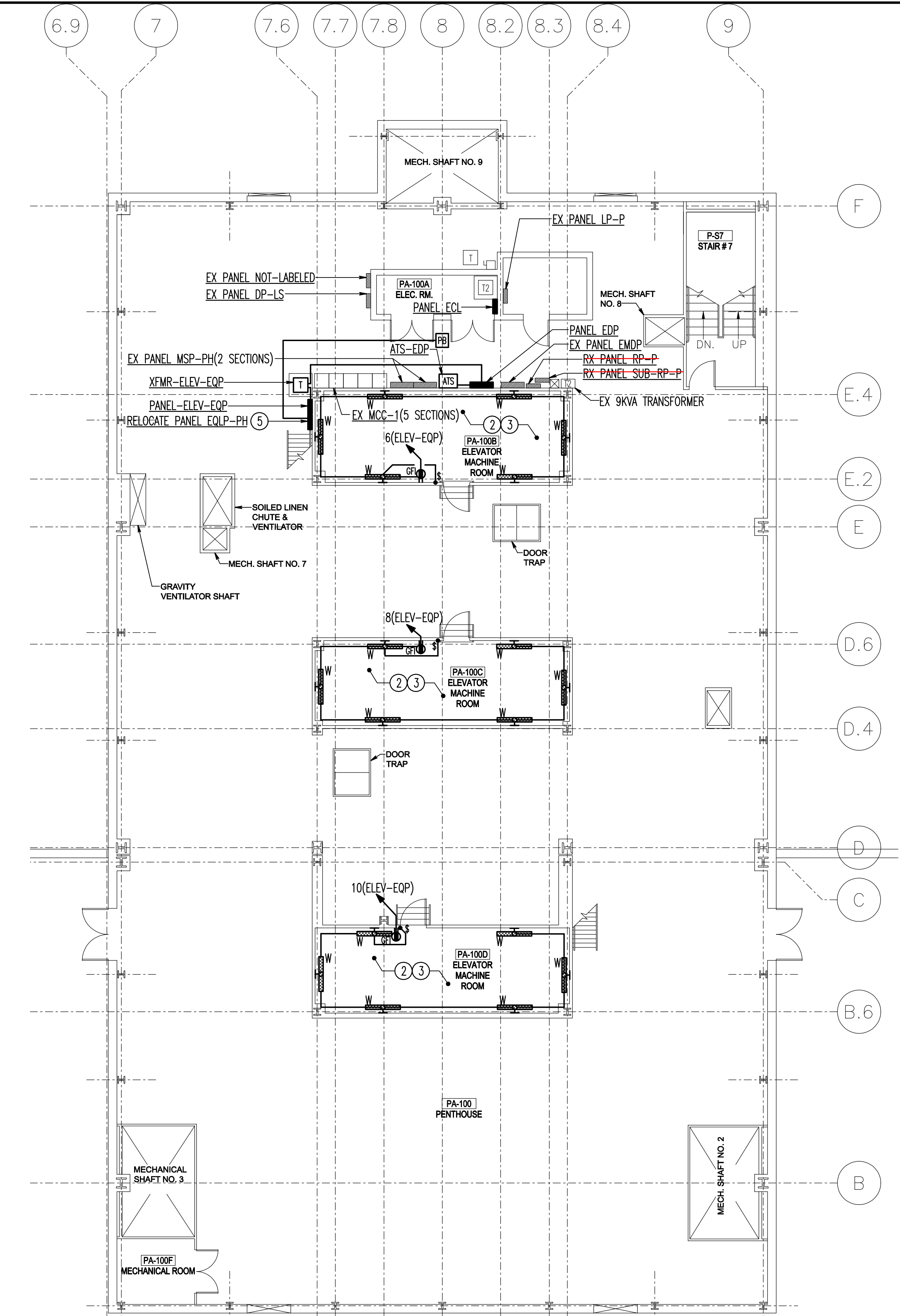
three eighths inch = one foot  
one half inch = one foot  
three quarters inch = one foot  
one inch = one foot  
one and one half inches = one foot  
two inches = one foot  
three inches = one foot



2 BLDG 500 BASEMENT PLAN - ELEVATOR PITS  
ELEVATORS S1,S4,S5,S6,S7- ELECTRICAL NEW WORK  
ES-202 SCALE: 1/8" = 1'-0"



3 BLDG 500 FIRST FLOOR PLAN - ELEVATOR PITS  
ELEVATORS PS,P3- ELECTRICAL NEW WORK  
ES-202 SCALE: 1/8" = 1'-0"



1 BLDG 500 PENTHOUSE - ELECTRICAL NEW WORK  
ES-202 SCALE: 1/8" = 1'-0"

DRAWING NOTES: (APPLICABLE TO THIS DRAWING ONLY)

D.1 UNLESS OTHERWISE NOTED, ELECTRICAL ITEMS SHOWN HEAVY SOLID (—) SHALL BE NEW, AND ELECTRICAL ITEMS SHOWN LIGHT SOLID (---) SHALL BE EXISTING TO REMAIN.

D.2 INFORMATION SHOWN ON THIS DRAWING PERTAINING TO EXISTING CONDITIONS HAS BEEN OBTAINED FROM AVAILABLE BUILDING DRAWINGS OR GENERAL FIELD OBSERVATIONS AND MAY NOT INDICATE ACTUAL EXISTING CONDITIONS IN DETAIL OR DIMENSION. THE CONTRACTOR IS RESPONSIBLE FOR DETERMINING THE ACTUAL EXISTING CONDITIONS PRIOR TO DEMOLITION OR PERFORMANCE OF ANY WORK. SHOULD CONDITIONS BE DISCOVERED THAT PREVENT EXECUTION OF THE WORK AS INDICATED, THE CONTRACTOR SHALL IMMEDIATELY NOTIFY THE ENGINEER IN WRITING AND AWAIT DIRECTION BEFORE PROCEEDING WITH THE WORK.

D.3 REFER TO DRAWING ES-501 FOR DISCONNECT AND EQUIPMENT SCHEDULE FOR ADDITIONAL INFORMATION.

SPECIAL NOTES: (APPLICABLE TO THIS DRAWING ONLY)

1 SUMP PUMP PROVIDED BY MECHANICAL DIVISION. COORDINATE AND ASSIST WITH CONNECTION. PROVIDE 1-1/2" CONDUIT WITH PULL STRING FOR WIRING BETWEEN SUMP PUMP AND SUMP PUMP CONTROLLER LOCATED IN ELEVATOR MACHINE ROOM IN PENTHOUSE. WIRING FURNISHED BY MECHANICAL DIVISION, INSTALLED BY ELECTRICAL DIVISION.

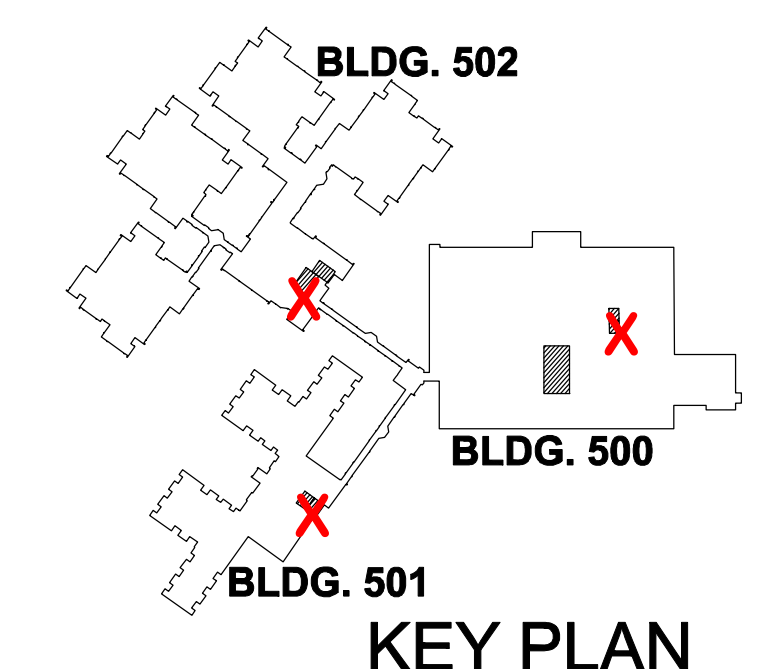
2 COORDINATE EXACT LOCATION OF ELECTRICAL DEVICES IN THIS ROOM WITH ELEVATOR CONTRACTOR.

3 CONNECT LUMINAIRES IN THIS ROOM TO THE LINE SIDE OF THE GFCI RECEPTACLE CIRCUIT IN THIS ROOM. DO NOT CONNECT TO LOAD SIDE.

4 CONNECT LUMINAIRES TO EXISTING LIGHT SWITCH.

5 RELOCATE EXISTING PANEL SHOWN ON DRAWING ES-101 TO THIS LOCATION SHOWN. EXTEND CONDUIT AND WIRING OF FEEDER AND BRANCH CIRCUITS AS REQUIRED. PROVIDE PULL BOX, SIZE AS REQUIRED TO MAKE SPLICE.

6 UP TO EXISTING SHAFT LIGHTS. EXISTING SHAFT LIGHTS ARE 277V AND SERVED FROM PANEL LP-PH.



1/8" = 1' - 0"

100% BID SET

<b>CONSULTANTS</b>		<b>ARCHITECTS</b>		Drawing Title <b>BUILDING 500 PENTHOUSE, FIRST FLOOR, BASEMENT - ELECTRICAL NEW WORK</b>		Project Title <b>VAMC Martinsburg Building Elevator Upgrades</b>		Project Number <b>613-139 11-134</b>		<b>Department of Veterans Affairs</b>		
<b>ROBERT L. SEYMOUR &amp; ASSOCIATES, INC.</b> TRANSPORTATION ROBERT L. SEYMOUR & ASSOCIATES 162 Thomas Johnson Drive SUITE 200 FREDERICK, MARYLAND 21702		<b>HENRY ADAMS</b> Consulting Engineers MECHANICAL ELECTRICAL & PLUMBING ENGINEERS <b>STRUCTURAL ENGINEER</b> ALPHA CORPORATION 1850 S. LOUDOUN STREET SUITE 200 WINCHESTER, VA 22601		<b>KOFFEL ASSOCIATES, INC.</b> Fire Protection ENGINEERS <b>FIRE PROTECTION</b> KOFFEL ASSOCIATES, INC. 8815 CENTRE PARK DRIVE SUITE 200 COLUMBIA, MD 21045-2107		<b>ERNEST BLAND ASSOCIATES, P.C.</b> TECHNICAL FACILITIES DESIGN 802 SLIGO AVENUE, SILVER SPRING, MARYLAND 20910 TELEPHONE (301) 589-4811 FAX (301) 589-3810		Location <b>VAMC Martinsburg Building</b>		Building Number <b>500, 501 &amp; 502</b>		
Date <b>7/13/15</b>		Date <b>7/13/15</b>		Approved: Project Director		Date <b>MAY 31, 2012</b>		Checked <b>JDT</b>		Drawing Number <b>ES-202</b>		
Revisions		Revisions		Revisions		Revisions		Revisions		Revisions		



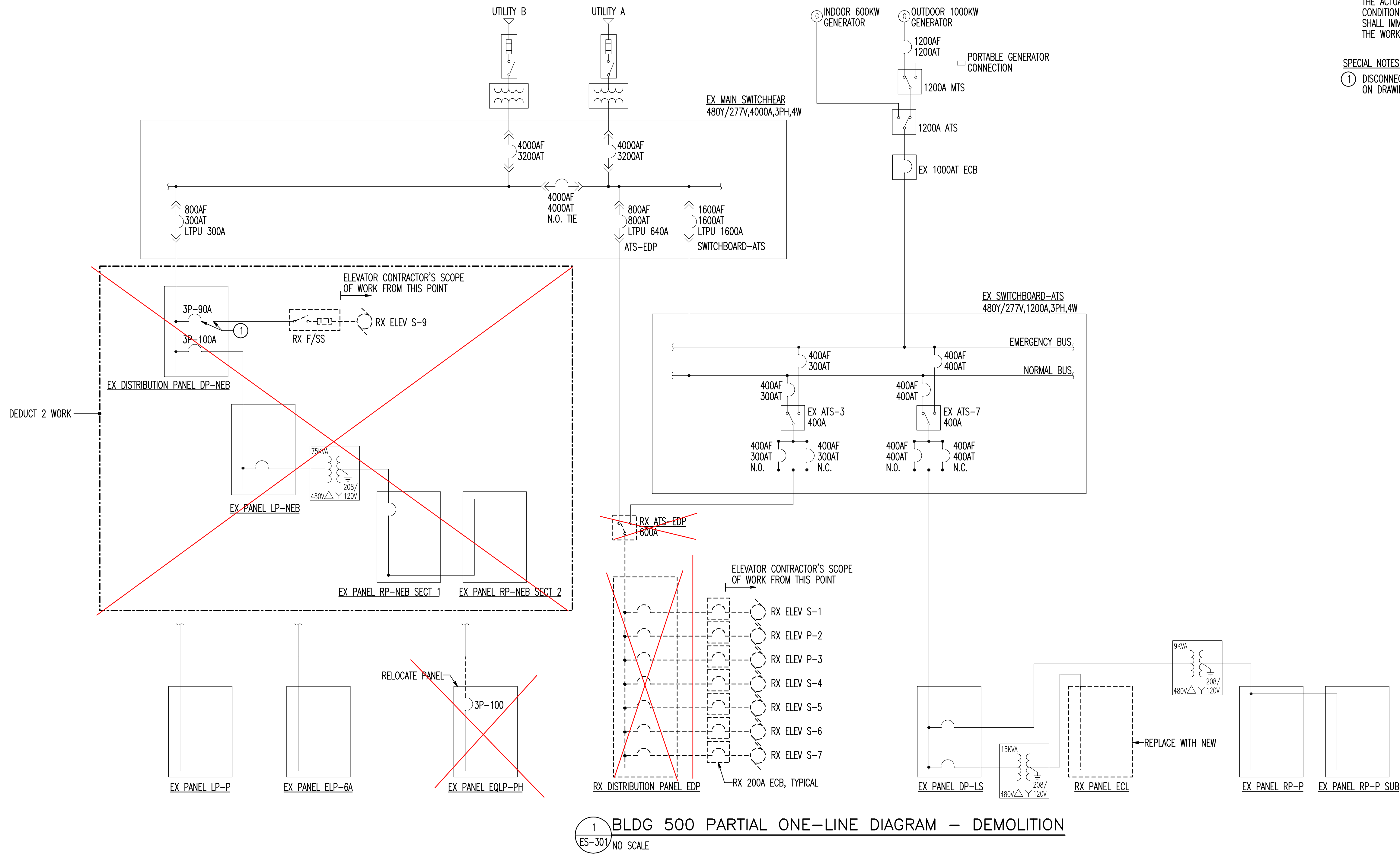
DRAWING NOTES: (APPLICABLE TO THIS DRAWING ONLY)

D.1 UNLESS OTHERWISE NOTED, ELECTRICAL ITEMS SHOWN HEAVY SOLID (——) SHALL BE NEW, ELECTRICAL ITEMS SHOWN HEAVY DASHED (-----) SHALL BE REMOVED, AND ELECTRICAL ITEMS SHOWN LIGHT SOLID (——) SHALL BE EXISTING TO REMAIN.

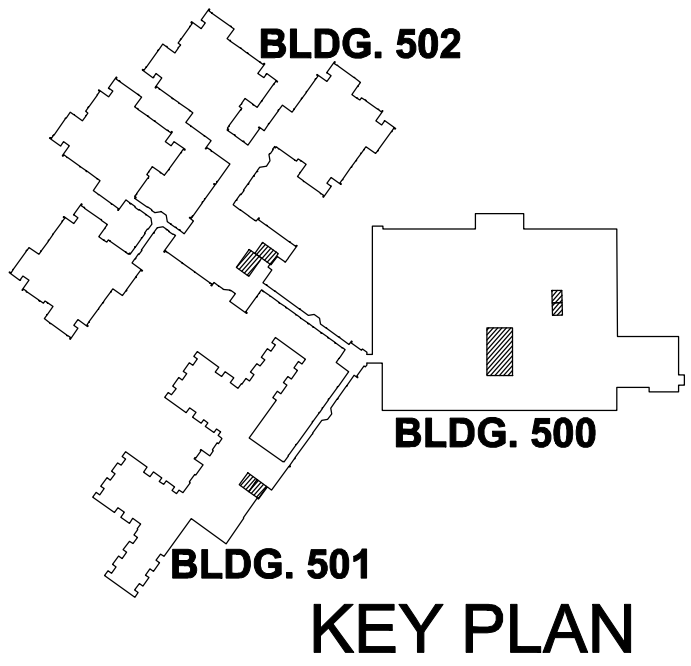
D.2 INFORMATION SHOWN ON THIS DRAWING PERTAINING TO EXISTING CONDITIONS HAS BEEN OBTAINED FROM AVAILABLE BUILDING DRAWINGS OR GENERAL FIELD OBSERVATIONS AND MAY NOT INDICATE ACTUAL EXISTING CONDITIONS IN DETAIL OR DIMENSION. THE CONTRACTOR IS RESPONSIBLE FOR DETERMINING THE ACTUAL EXISTING CONDITIONS PRIOR TO DEMOLITION OR PERFORMANCE OF ANY WORK. SHOULD CONDITIONS BE DISCOVERED THAT PREVENT EXECUTION OF THE WORK AS INDICATED, THE CONTRACTOR SHALL IMMEDIATELY NOTIFY THE ENGINEER IN WRITING AND AWAIT DIRECTION BEFORE PROCEEDING WITH THE WORK.

SPECIAL NOTES: (APPLICABLE TO THIS DRAWING ONLY)

① DISCONNECT ELEVATOR FEEDER FROM EXISTING CIRCUIT BREAKER. CONNECT TO NEW CIRCUIT BREAKER SHOWN ON DRAWING ES-302.



1 BLDG 500 PARTIAL ONE-LINE DIAGRAM — DEMOLITION  
ES-301 NO SCALE



NOTE: REFERENCE PREVIOUS ELEC. DRAWINGS FOR CHANGES AS THEY APPLY.

100% BID SET

<b>CONSULTANTS</b>		<b>ARCHITECTS</b>		Drawing Title <b>BUILDING 500 PARTIAL ELECTRICAL ONE-LINE DIAGRAM - DEMOLITION</b>		Project Title <b>VAMC Martinsburg Building Elevator Upgrades</b>		Project Number 613-439-11-134		<b>Department of Veterans Affairs</b> 	
 ROBERT L. SEYMOUR & ASSOCIATES, INC. 162 Thomas Johnson Drive SUITE 200 FREDERICK, MARYLAND 21702		 HENRY ADAMS Consulting Engineers MECHANICAL ELECTRICAL & PLUMBING ENGINEERS		 ERNEST BLAND ASSOCIATES, P.C. TECHNICAL FACILITIES DESIGN 802 SLIGO AVENUE, SILVER SPRING, MARYLAND 20910 TELEPHONE (301) 589-4811 FAX (301) 589-3810		Approved: Project Director		Location			Building Number 500, 501 & 502
 ALPHA CORPORATION 1850 S. LOUDOUN STREET SUITE 200 WINCHESTER, VA 22601		 KOFFEL ASSOCIATES, INC. 8815 CENTRE PARK DRIVE SUITE 200 COLUMBIA, MD 21045-2107		 ALPHA CORPORATION 1850 WASHINGTON BOULEVARD SUITE 425 BALTIMORE, MD 21230		Date MAY 31, 2012		Checked JDT			Drawing Number <b>ES-301</b>
 TRANSPORTATION ROBERT L. SEYMOUR & ASSOCIATES 162 Thomas Johnson Drive SUITE 200 FREDERICK, MARYLAND 21702		 STRUCTURAL ENGINEER HENRY ADAMS 600 BALTIMORE AVENUE BALTIMORE, MD 21204		 MEP ENGINEERS HENRY ADAMS 600 BALTIMORE AVENUE BALTIMORE, MD 21204		 FIRE PROTECTION KOFFEL ASSOCIATES, INC. 8815 CENTRE PARK DRIVE SUITE 200 COLUMBIA, MD 21045-2107		 COST ESTIMATING ALPHA CORPORATION 1850 WASHINGTON BOULEVARD SUITE 425 BALTIMORE, MD 21230			

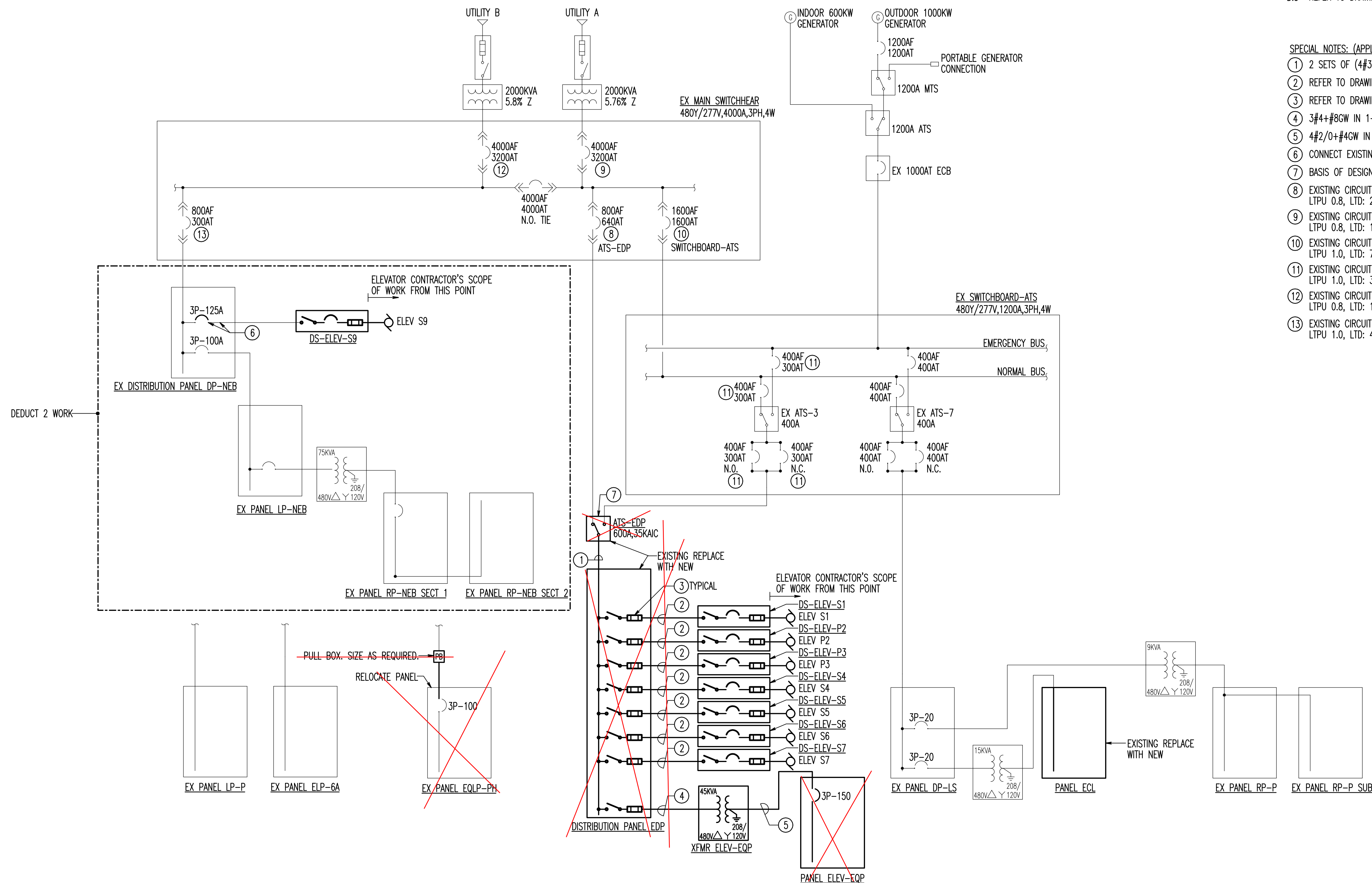


## DRAWING NOTES: (APPLICABLE TO THIS DRAWING ONLY)

- D.1 UNLESS OTHERWISE NOTED, ELECTRICAL ITEMS SHOWN HEAVY SOLID (——) SHALL BE NEW, ELECTRICAL ITEMS SHOWN HEAVY DASHED (-----) SHALL BE REMOVED, AND ELECTRICAL ITEMS SHOWN LIGHT SOLID (——) SHALL BE EXISTING TO REMAIN.
- D.2 INFORMATION SHOWN ON THIS DRAWING PERTAINING TO EXISTING CONDITIONS HAS BEEN OBTAINED FROM AVAILABLE BUILDING DRAWINGS OR GENERAL FIELD OBSERVATIONS AND MAY NOT INDICATE ACTUAL EXISTING CONDITIONS IN DETAIL OR DIMENSION. THE CONTRACTOR IS RESPONSIBLE FOR DETERMINING THE ACTUAL EXISTING CONDITIONS PRIOR TO DEMOLITION OR PERFORMANCE OF ANY WORK. SHOULD CONDITIONS BE DISCOVERED THAT PREVENT EXECUTION OF THE WORK AS INDICATED, THE CONTRACTOR SHALL IMMEDIATELY NOTIFY THE ENGINEER IN WRITING AND AWAIT DIRECTION BEFORE PROCEEDING WITH THE WORK.
- D.3 REFER TO DRAWING ES-501 FOR DISCONNECT AND EQUIPMENT SCHEDULE FOR ADDITIONAL INFORMATION.

## SPECIAL NOTES: (APPLICABLE TO THIS DRAWING ONLY)

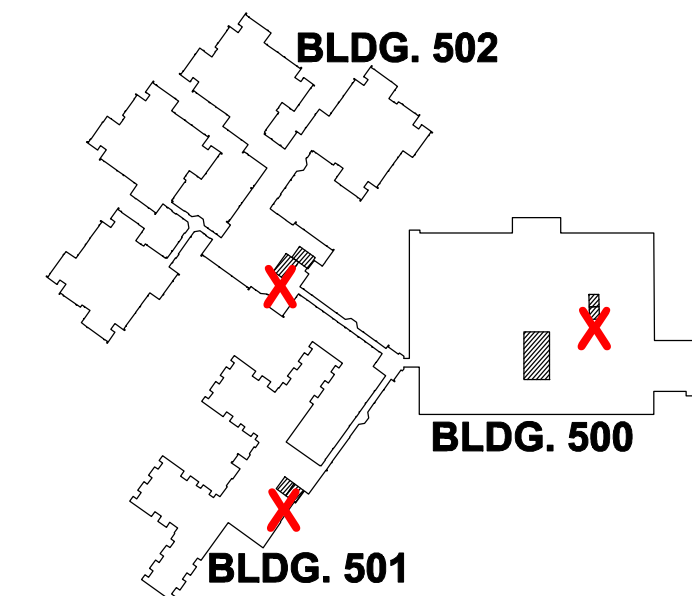
- ① 2 SETS OF (4#350+1GW IN 3" C)
- ② REFER TO DRAWING ES03 FOR CONDUIT AND WIRING SIZES.
- ③ REFER TO DRAWING ES03 FOR FUSE SIZES
- ④ 3#4+1#8GW IN 1-1/4" C.
- ⑤ 4#2/0+1#4GW IN 2" C.
- ⑥ CONNECT EXISTING ELEVATOR FEEDER TO NEW CIRCUIT BREAKER.
- ⑦ BASIS OF DESIGN: ASCO 7000 SERIES.
- ⑧ EXISTING CIRCUIT BREAKER SETTINGS: EATON MAGNUM DS MDN508, 800AF WITH 800A PLUG  
LTPU 0.8, LTD: 20, STPU: 6, STD: 0.2, I: 10, GFPU: 0.3, GFTIME: 0.2
- ⑨ EXISTING CIRCUIT BREAKER SETTINGS: EATON MAGNUM DS MDN84N, 4000AF WITH 4000A PLUG  
LTPU 0.8, LTD: 12, STPU: 3, STD: 0.5, I: 8, GFPU: 1.0, GFTIME: 0.3
- ⑩ EXISTING CIRCUIT BREAKER SETTINGS: EATON MAGNUM DS MDN520MC, 1600AF WITH 1600A PLUG  
LTPU 1.0, LTD: 7, STPU: 6, STD: 0.2, I: 8, GFPU: 0.5, GFTIME: 0.2
- ⑪ EXISTING CIRCUIT BREAKER SETTINGS: GE SPECTRA SERIES MCCB, TYPE SRP6400B, 400AF WITH 300AT PLUG  
LTPU 1.0, LTD: 3, STPU: 3, ST PT OUT: 4, I: 8, GFPU: 1.0, GF PT OUT: 2
- ⑫ EXISTING CIRCUIT BREAKER SETTINGS: EATON MAGNUM DS MDN4C, 4000AF WITH 4000A PLUG  
LTPU 0.8, LTD: 12, STPU: 2, STD: 0.4, I: 4, GFPU: 0.25, GFTIME: 0.3
- ⑬ EXISTING CIRCUIT BREAKER SETTINGS: EATON MAGNUM DS MDN508, 800AF WITH 800A PLUG  
LTPU 1.0, LTD: 4, STPU: 2, STD: 0.4, I: 4, GFPU: 1.0, GFTIME: 0.1



1 BLDG 500 PARTIAL ONE-LINE DIAGRAM - NEW WORK  
ES-302 NO SCALE

NOTE: REFERENCE PREVIOUS ELEC. DRAWINGS  
FOR CHANGES AS THEY APPLY.

## KEY PLAN



## CONSULTANTS



TRANSPORTATION  
ROBERT L. SEYMOUR & ASSOCIATES  
162 Thomas Johnson Drive  
SUITE 200  
FREDERICK, MARYLAND 21702



STRUCTURAL ENGINEER  
ALPHA CORPORATION  
1650 S. LOUDOUN STREET  
SUITE 200  
WINCHESTER, VA 22601



MEP ENGINEERS  
HENRY ADAMS  
600 BALTIMORE AVENUE  
BALTIMORE, MD 21204

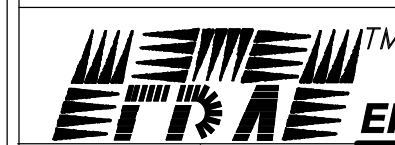


FIRE PROTECTION  
KOFFEL ASSOCIATES, INC.  
8615 CENTRE PARK DRIVE  
SUITE 200  
COLUMBIA, MD 21045-2107



COST ESTIMATING  
ALPHA CORPORATION  
1650 WASHINGTON BOULEVARD  
SUITE 425  
BALTIMORE, MD 21230

## ARCHITECTS



ERNEST BLAND ASSOCIATES, P.C.  
TECHNICAL FACILITIES DESIGN

802 SLIGO AVENUE, SILVER SPRING, MARYLAND 20910  
TELEPHONE (301) 589-4811 FAX (301) 589-3810

Drawing Title  
BUILDING 500 PARTIAL ELECTRICAL  
ONE-LINE DIAGRAM - NEW WORK

Approved: Project Director

Project Title  
VAMC Martinsburg Building  
Elevator Upgrades

Location

Date  
MAY 31, 2012

Checked  
JDT

Drawn  
ADP

Project Number  
613-139 11-134

Building Number  
500, 501 & 502

Drawing Number

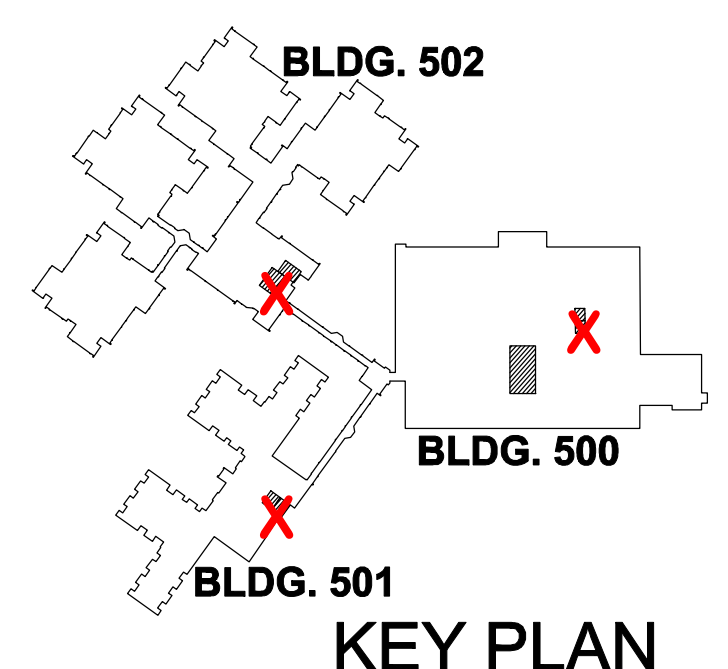
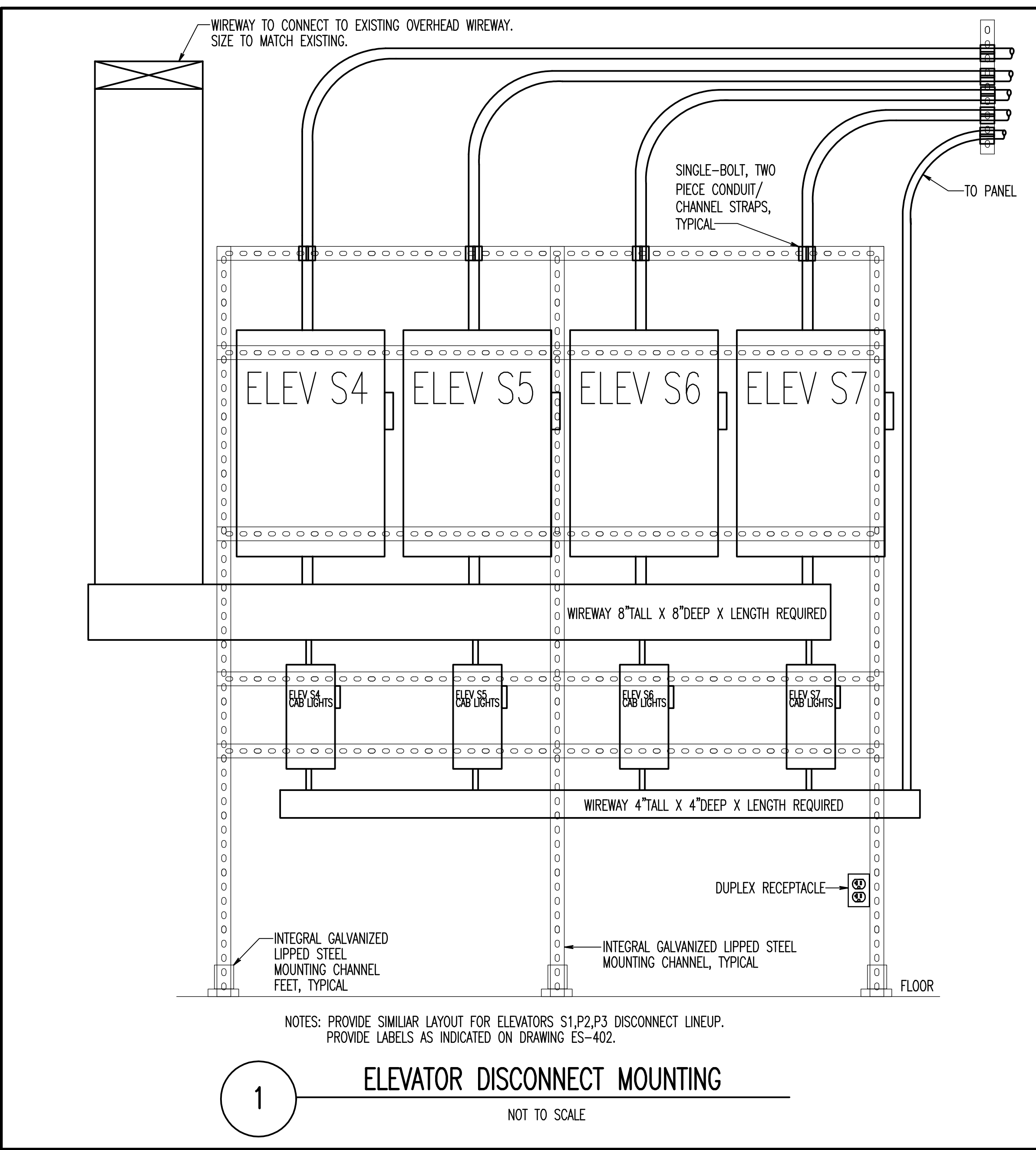
ES-302

100% BID SET

Department  
of Veterans  
Affairs



three inches = one foot  
one and one half inches = one foot  
one inch = one foot  
three quarters inch = one foot  
one half inch = one foot  
three eighths inch = one foot



<b>CONSULTANTS</b>			<b>ARCHITECTS</b>	Drawing Title <b>ELECTRICAL DETAILS</b>	Project Title <b>VAMC Martinsburg Building Elevator Upgrades</b>		Project Number 613 - 439 11-134	
				Approved: Project Director	Location		Building Number 500, <del>501</del> & 502	
<b>TRANSPORTATION</b> ROBERT L. SEYMOUR & ASSOCIATES, INC. 162 Thomas Johnson Drive SUITE 200 FREDERICK, MARYLAND 21702		<b>STRUCTURAL ENGINEER</b> ALPHA CORPORATION 1650 S. LOUDOUN STREET SUITE 200 WINCHESTER, VA 22601	<b>MEP ENGINEERS</b> HENRY ADAMS 600 BALTIMORE AVENUE BALTIMORE, MD 21204	<b>FIRE PROTECTION ENGINEERS</b> KOFFEL ASSOCIATES, INC. 8615 CENTRE PARK DRIVE SUITE 200 COLUMBIA, MD 21045-2107	<b>COST ESTIMATING</b> ALPHA CORPORATION 1650 WASHINGTON BOULEVARD SUITE 425 BALTIMORE, MD 21230	Date MAY 31, 2012		Checked JDT
Revisions		Date 7/13/15			Drawn ADP		Drawing Number <b>ES-401</b>	

100% BID SET

**Department of Veterans Affairs**



three inches = one foot  
6"

one and one half inches = one foot  
18"

one inch = one foot  
12"

three quarters inch = one foot  
9"

one half inch = one foot  
6"

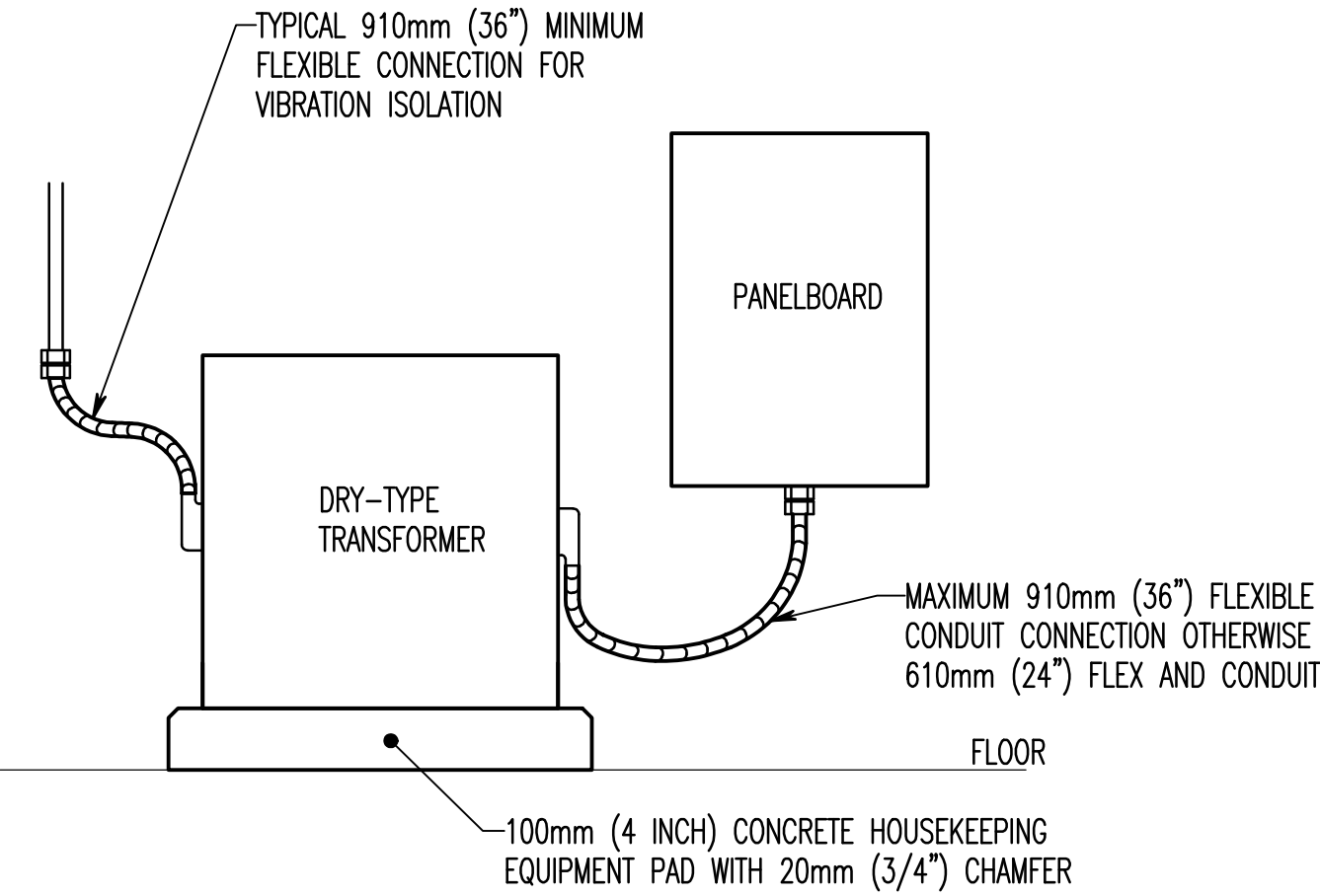
three eighths inch = one foot  
4 1/2"

A

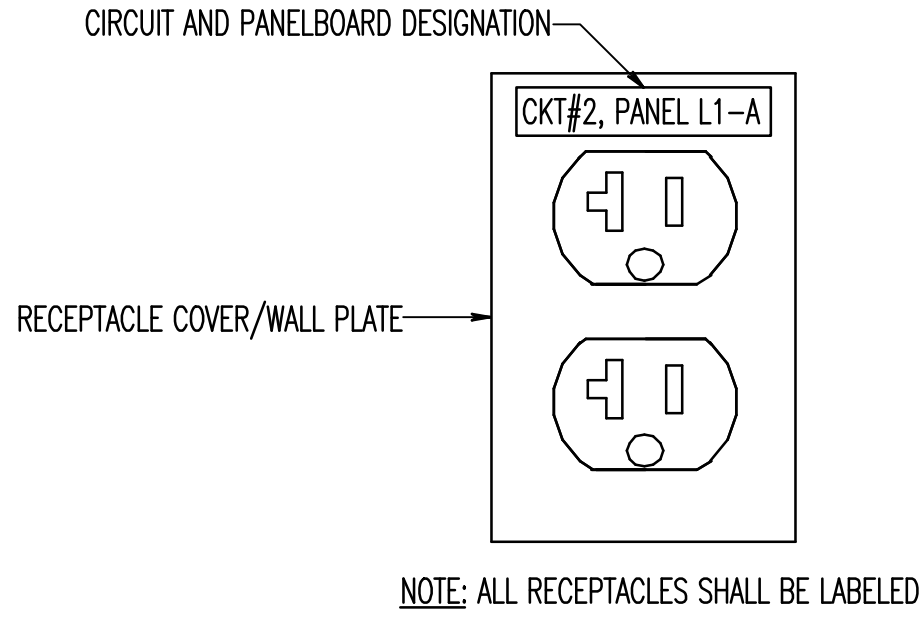
B

C

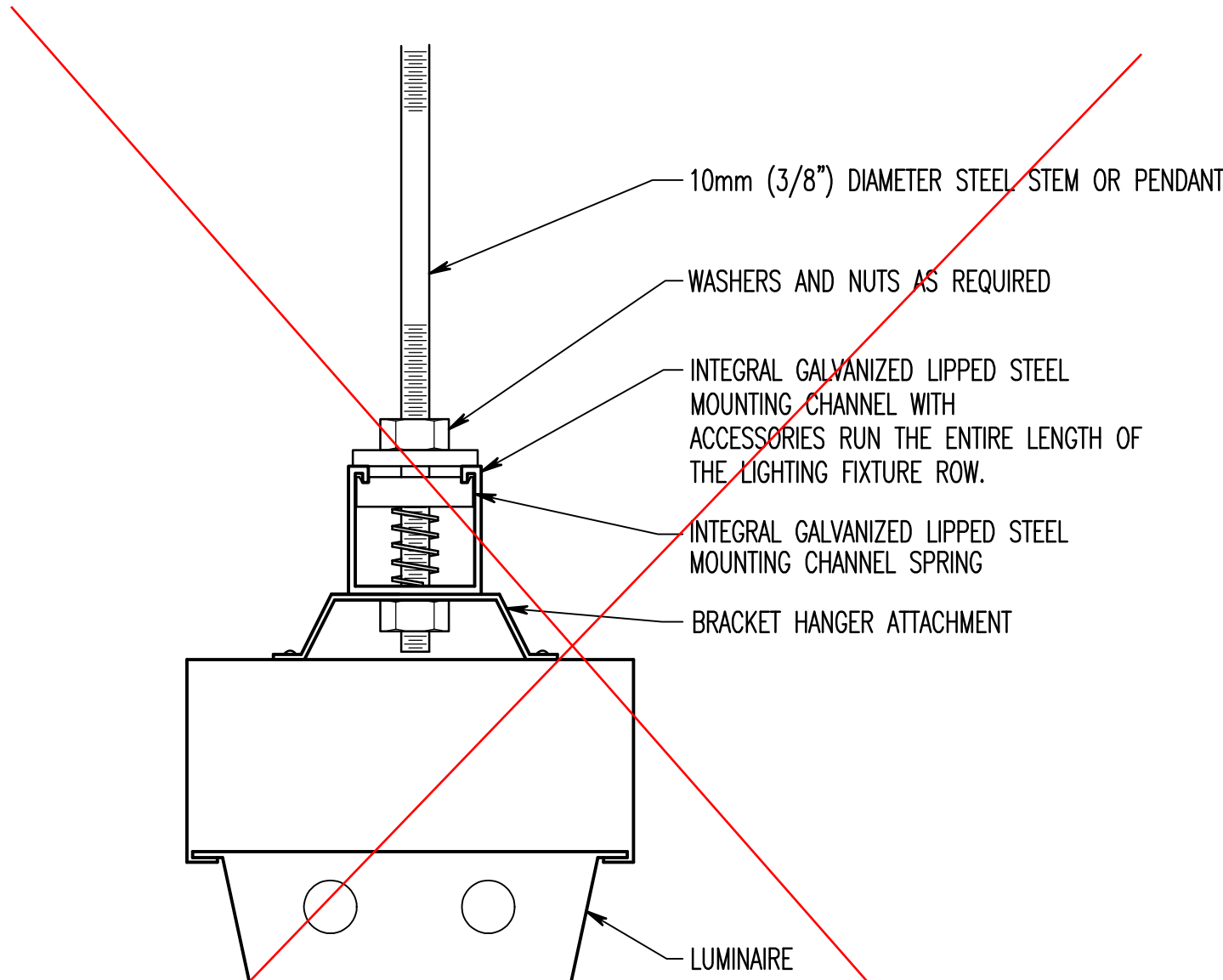
D



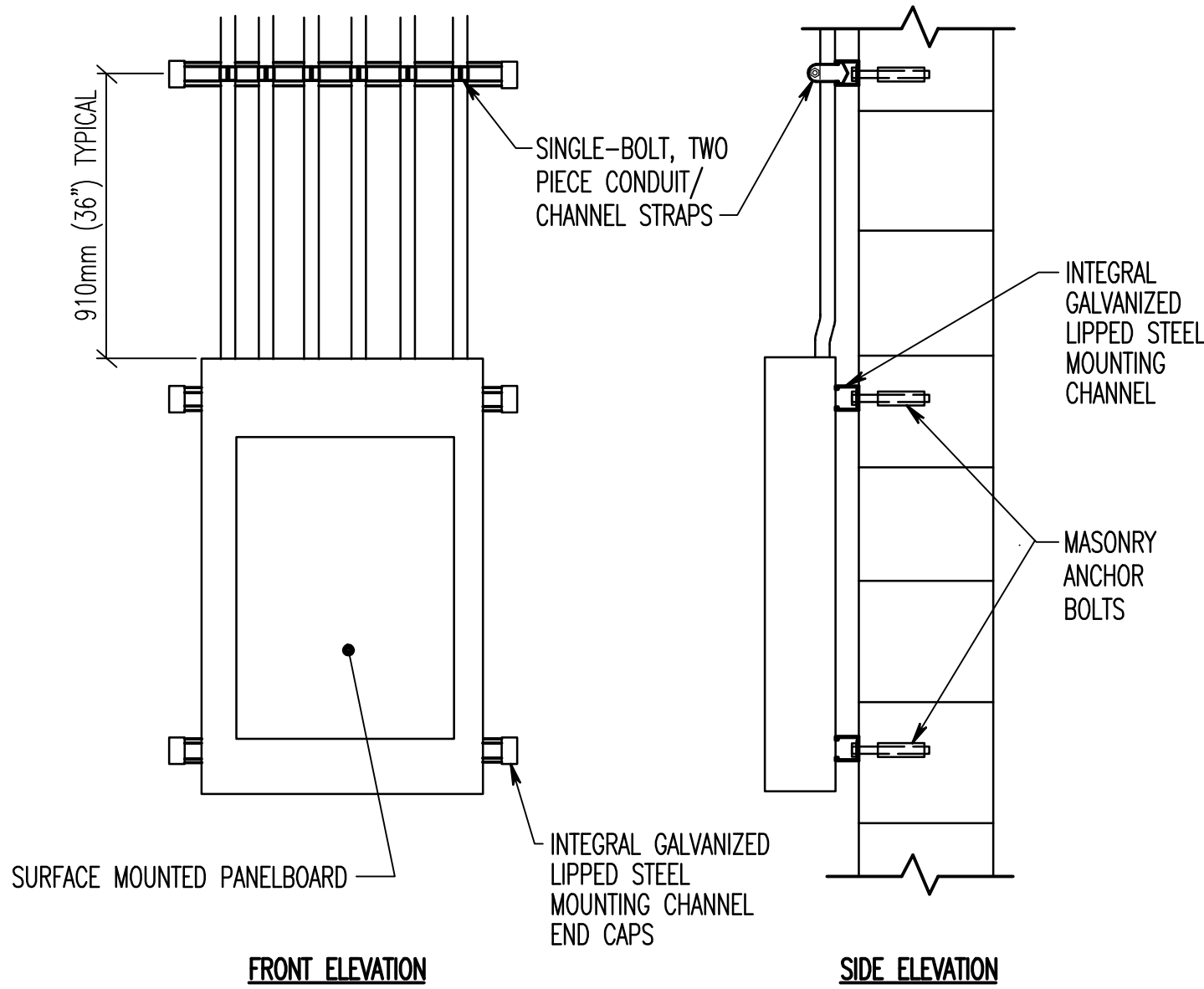
4 TRANSFORMER CONNECTION DETAIL  
NOT TO SCALE



3 TYPICAL EQUIPMENT AND RECEPTACLE LABEL  
NOT TO SCALE



2 LUMINAIRE SUPPORT DETAIL  
NOT TO SCALE

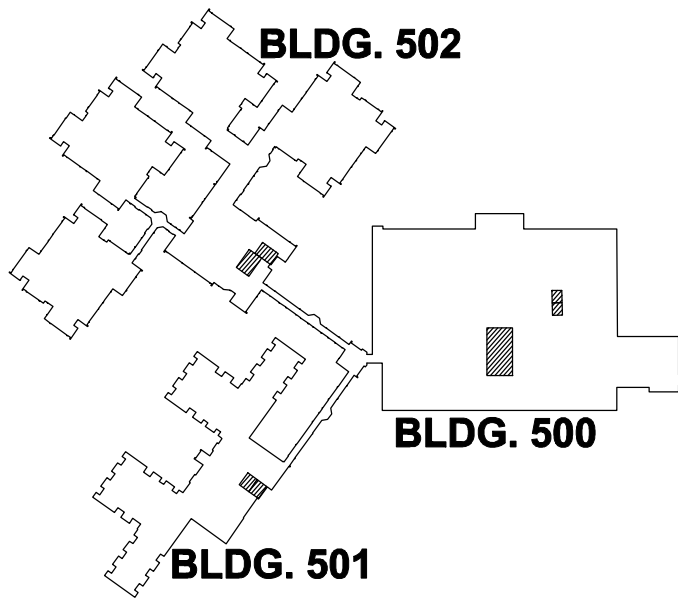


1 PANELBOARD MOUNTING DETAIL  
NOT TO SCALE

PILOT LIGHT ON: ELEVATOR POWER IS AVAILABLE  
PILOT LIGHT OFF: ELEVATOR POWER FAILURE (POSSIBLE SHUNT TRIP)

NOTE: LETTERING SHALL BE 1/2" HIGH. ALL SHUNT TRIP ELEVATOR DISCONNECTS SHALL BE LABELED.

5 SHUNT TRIP ELEVATOR DISCONNECT LABEL  
NOT TO SCALE



KEY PLAN

100% BID SET

<b>CONSULTANTS</b>			<b>ARCHITECTS</b>	Drawing Title <b>ELECTRICAL DETAILS</b>	Project Title <b>VAMC Martinsburg Building Elevator Upgrades</b>	Project Number <b>613 - 139 11-134</b>	<b>Department of Veterans Affairs</b> 		
				Approved: Project Director	Location	Building Number <b>500, 501 &amp; 502</b>			
TRANSPORTATION ROBERT L. SEYMOUR & ASSOCIATES 162 Thomas Johnson Drive SUITE 200 FREDERICK, MARYLAND 21702		STRUCTURAL ENGINEER ALPHA CORPORATION 1820 S. LOUDOUN STREET SUITE 200 WINCHESTER, VA 22601	MEP ENGINEERS HENRY ADAMS 600 BALTIMORE AVENUE BALTIMORE, MD 21204	FIRE PROTECTION KOFFEL ASSOCIATES, INC. 8615 CENTRE PARK DRIVE SUITE 200 COLUMBIA, MD 21045-2107	COST ESTIMATING ALPHA CORPORATION 1820 WASHINGTON BOULEVARD SUITE 425 BALTIMORE, MD 21230	Date MAY 31, 2012	Checked JDT	Drawn ADP	Drawing Number <b>ES-402</b>