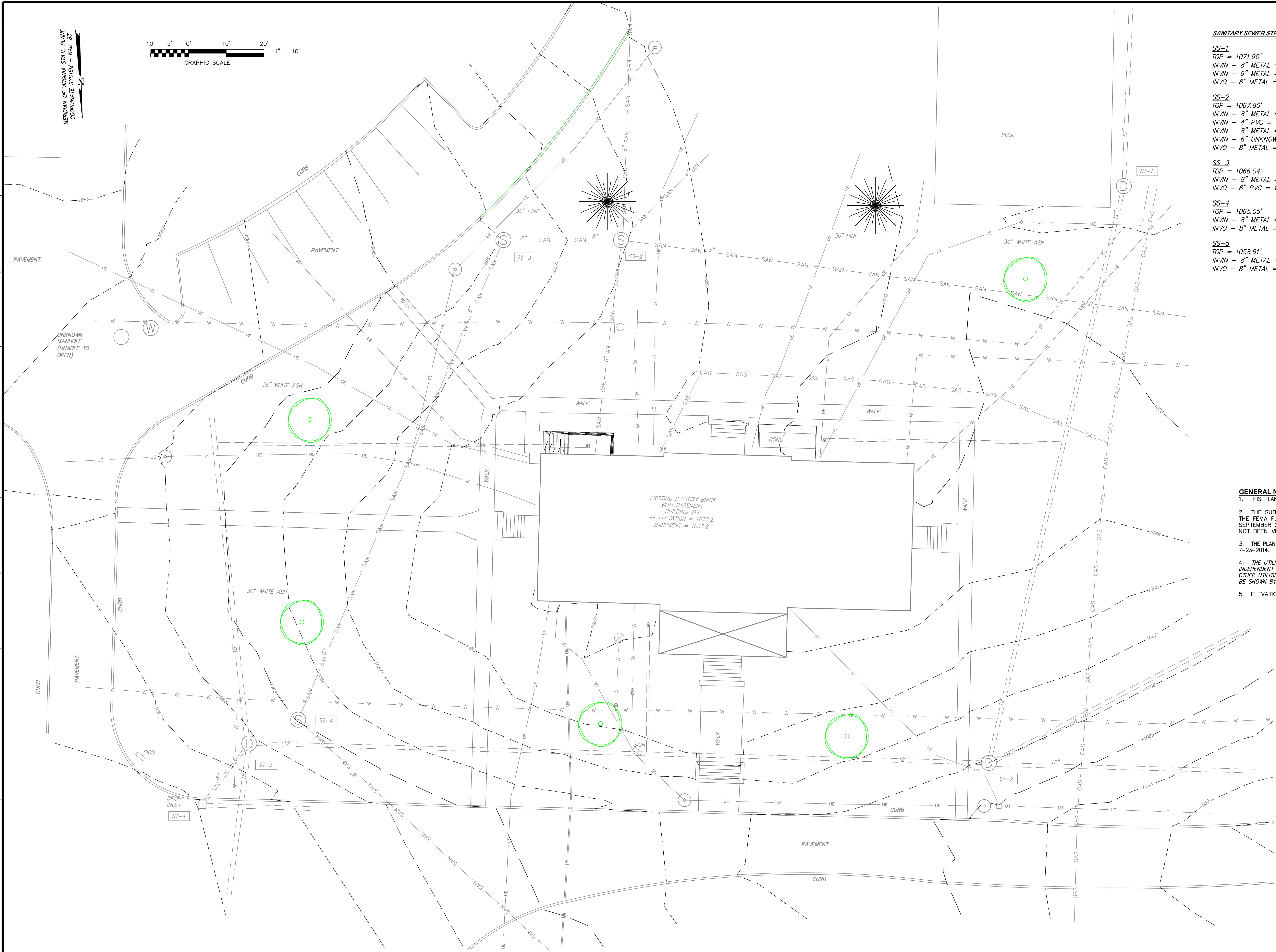


Drawing File: SA\2014 Projects\14-0010 VA Medical Bldg 17\6 DWG\Active Engineering Production\VF-101.dwg
Plotted By: j.palander
Plotted Date: Mar 17, 2015 - 5:27pm

three eighths inch = one foot
one eighth inch = one foot
one quarter inch = one foot
one half inch = one foot
three quarters inch = one foot
one inch = one foot
one and one half inches = one foot
two inches = one foot
three inches = one foot



SANITARY SEWER STRUCTURES:		STORM SEWER STRUCTURES:	
SS-1	TOP = 1071.90'	ST-1	TOP = 1071.58'
INVIN - 8" METAL = 1066.2'		INVIN - 12" METAL = 1066.8'	
INVIN - 6" METAL = 1066.7'		INVO - 12" METAL = 1063.2'	
INVO - 8" METAL = 1066.1'			
SS-2	TOP = 1067.80'	ST-2	TOP = 1066.00'
INVIN - 8" METAL = 1061.6'		INVIN - 12" METAL = 1058.9'	
INVIN - 4" PVC = 1061.6'		INVIN - 12" METAL = 1059.0'	
INVIN - 8" METAL = 1060.7'		INVIN - 12" METAL = 1057.2'	
INVIN - 6" UNKNOWN = 1060.7'		INVO - 12" METAL = 1057.1'	
INVO - 8" METAL = 1060.7'			
SS-3	TOP = 1066.04'	ST-3	TOP = 1063.81'
INVIN - 8" METAL = 1059.7'		INVIN - 15" METAL = 1058.6'	
INVO - 8" PVC = 1059.6'		INVIN - 12" METAL = 1055.3'	
		INVO - 15" METAL = 1055.2'	
SS-4	TOP = 1065.05'	ST-4	TOP = 1062.03'
INVIN - 8" METAL = 1057.5'		INVIN - SEALED PIPE = 1057.9'	
INVO - 8" METAL = 1057.4'		INVO - 8" METAL = 1057.9'	
SS-5	TOP = 1058.61'		
INVIN - 8" METAL = 1050.8'			
INVO - 8" METAL = 1050.6'			

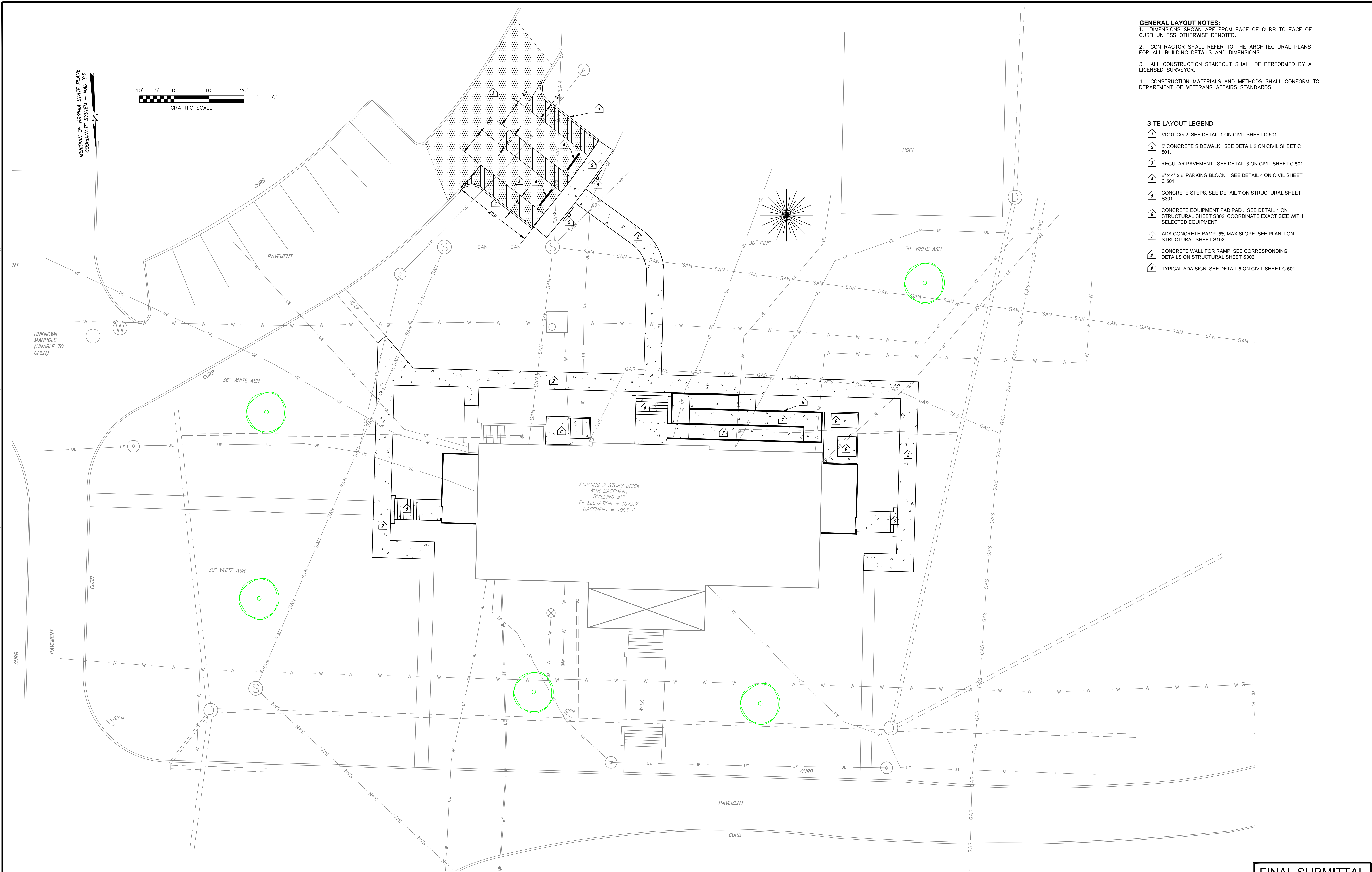
LEGEND:	
-SAN-	SANITARY SEWER LINE
-ST-	STORM SEWER LINE
-UE-	UNDERGROUND TELEPHONE
-W-	UNDERGROUND ELECTRIC
-GAS-	UNDERGROUND WATER LINE
○	SANITARY SEWER MANHOLE
○	STORM SEWER MANHOLE
○	TELEPHONE PEDASTEL
○	LIGHT POLE
○	SIGN
○	CLEANOUT
○	GAS EQUIPMENT
○	FENCE
○	WATER VALVE
○	FIRE HYDRANT
○	WATER MANHOLE

- GENERAL NOTES:**
- THIS PLAN WAS PREPARED WITHOUT THE BENEFIT OF TITLE COMMITMENT.
 - THE SUBJECT PROPERTY IS WITHIN THE LIMITS OF ZONE "X" AS SHOWN ON THE FEMA FLOOD INSURANCE RATE MAPS 51161C0144 G EFFECTIVE DATE SEPTEMBER 28, 2007. THIS DETERMINATION IS BASED ON SAID MAP AND HAS NOT BEEN VERIFIED BY ACTUAL FIELD ELEVATIONS.
 - THE PLAN WAS PREPARED FROM A FIELD SURVEY BY PARKER DESIGN GROUP ON 7-23-2014.
 - THE UTILITIES SHOWN HEREON ARE BASED ON MARKINGS IN FIELD AS MARKED BY AN INDEPENDENT CONTRACTOR, SAVE UTILITY LINES ON JULY 15, 2014. THERE MAY EXIST OTHER UTILITIES THAT WERE NOT DETECTED DURING SAID MARKINGS AND WERE UNABLE TO BE SHOWN BY PARKER DESIGN GROUP.
 - ELEVATIONS SHOWN ARE ON NAVD 88 DATUM.

CONSULTANTS:		ARCHITECT:		Drawing Title:		Project Title:		Project Number:		OFFICE OF CONSTRUCTION AND FACILITIES MANAGEMENT Department of Veterans Affairs	
 parker DESIGN GROUP, INC. ENGINEERS * SURVEYORS * PLANNERS * LANDSCAPE ARCHITECTS		 TOLAND MIZELL MOLNAR		EXISTING CONDITIONS		RENOVATE BUILDING 17 VA SALEM		658-13-120			
816 Boulevard Salem, Virginia 24153 Phone: 540-387-1153 Fax: 540-389-5767 www.parkerdg.com		590 MEANS ST NW SUITE 200 ATLANTA GA 30319 404.343.9774		Approved: Project Director		Location: SALEM, VA		Building Number: 17			
Revisions:						Date: 03-18-2015		Drawing Number: 2573 VF-101			
Date:						Checked: SLR		Drawn: DGF		Dwg. of	

Drawing File: SA\2014 Projects\14-0010 VA Medical Bldg 17\6 DWG\Active Engineering Production\GP-101_C-501.dwg
Plotted by: j.pawender
Plotted Date: Mar 17, 2015 - 5:27pm

three eighths inch = one foot
one eighth inch = one foot
one quarter inch = one foot
one half inch = one foot
three quarters inch = one foot
one inch = one foot
one and one half inches = one foot
two inches = one foot
three inches = one foot



- GENERAL LAYOUT NOTES:**
1. DIMENSIONS SHOWN ARE FROM FACE OF CURB TO FACE OF CURB UNLESS OTHERWISE DENOTED.
 2. CONTRACTOR SHALL REFER TO THE ARCHITECTURAL PLANS FOR ALL BUILDING DETAILS AND DIMENSIONS.
 3. ALL CONSTRUCTION STAKEOUT SHALL BE PERFORMED BY A LICENSED SURVEYOR.
 4. CONSTRUCTION MATERIALS AND METHODS SHALL CONFORM TO DEPARTMENT OF VETERANS AFFAIRS STANDARDS.

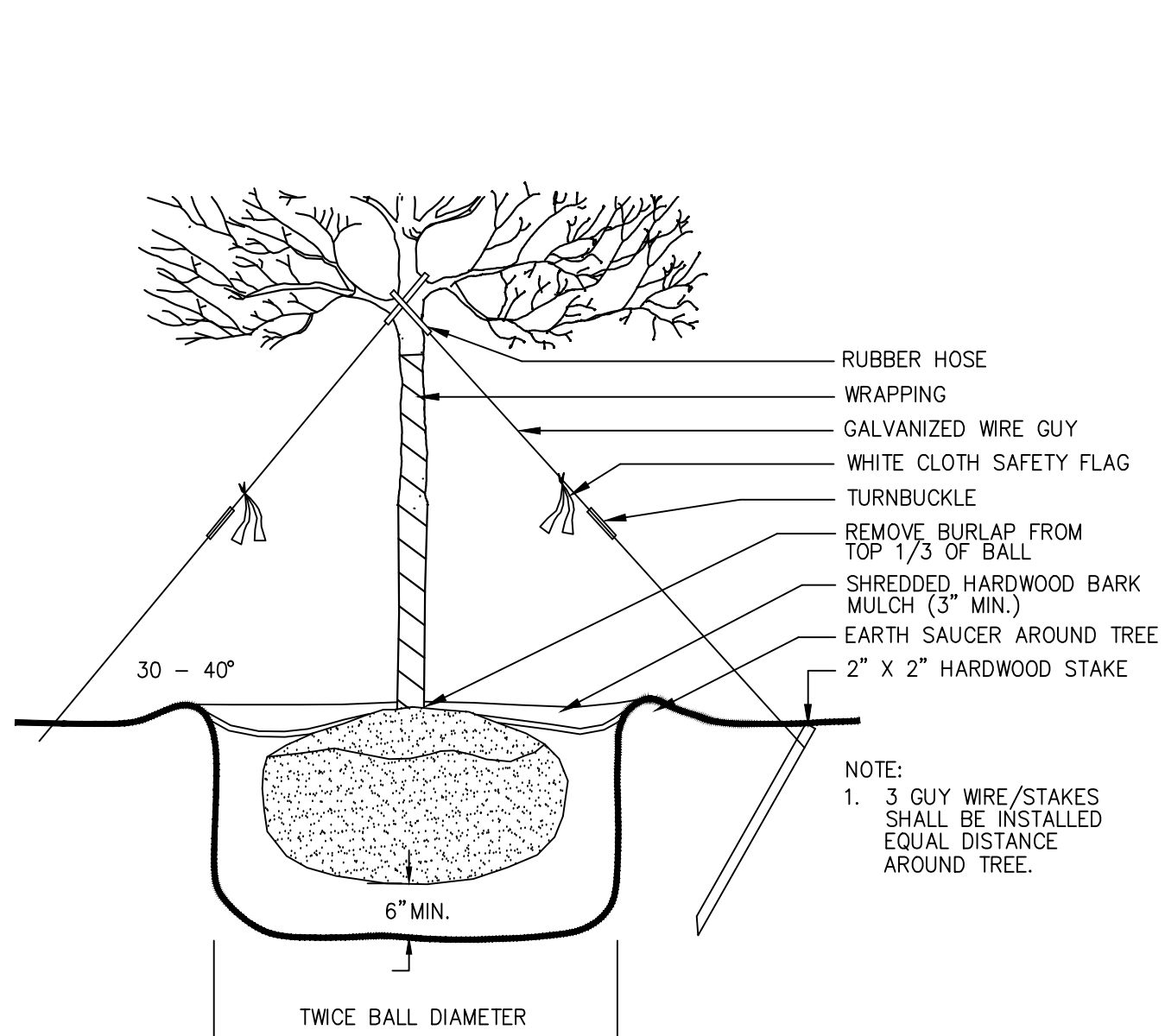
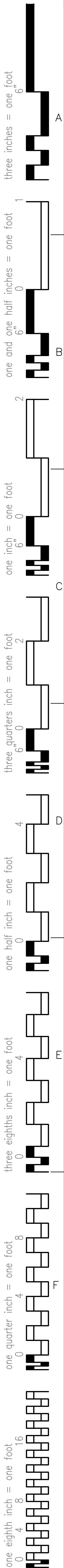
- SITE LAYOUT LEGEND**
- 1 VDOT CG-2. SEE DETAIL 1 ON CIVIL SHEET C 501.
 - 2 5' CONCRETE SIDEWALK. SEE DETAIL 2 ON CIVIL SHEET C 501.
 - 3 REGULAR PAVEMENT. SEE DETAIL 3 ON CIVIL SHEET C 501.
 - 4 6' x 4' x 6' PARKING BLOCK. SEE DETAIL 4 ON CIVIL SHEET C 501.
 - 5 CONCRETE STEPS. SEE DETAIL 7 ON STRUCTURAL SHEET S301.
 - 6 CONCRETE EQUIPMENT PAD PAD. SEE DETAIL 1 ON STRUCTURAL SHEET S302. COORDINATE EXACT SIZE WITH SELECTED EQUIPMENT.
 - 7 ADA CONCRETE RAMP. 5% MAX SLOPE. SEE PLAN 1 ON STRUCTURAL SHEET S102.
 - 8 CONCRETE WALL FOR RAMP. SEE CORRESPONDING DETAILS ON STRUCTURAL SHEET S302.
 - 9 TYPICAL ADA SIGN. SEE DETAIL 5 ON CIVIL SHEET C 501.

CONSULTANTS:  parker DESIGN GROUP, INC. ENGINEERS * SURVEYORS * PLANNERS * LANDSCAPE ARCHITECTS 816 Boulevard Salem, Virginia 24153 Phone: 540-387-1153 Fax: 540-389-5767 www.parkerdg.com			ARCHITECT:  TOLAND MIZELL MOLNAR 590 MEANS ST NW SUITE 200 ATLANTA GA 30319 404.343.9774	Drawing Title: SITE LAYOUT AND DIMENSION PLAN Approved: Project Director	Project Title: RENOVATE BUILDING 17 VA SALEM Location: SALEM, VA Date: 03-18-2015 Checked: SLR Drawn: DGF	Project Number: 658-13-120 Building Number: 17 Drawing Number: 2573 CP-101 Dwg. of	OFFICE OF CONSTRUCTION AND FACILITIES MANAGEMENT 
---	--	---	---	---	--	---	--

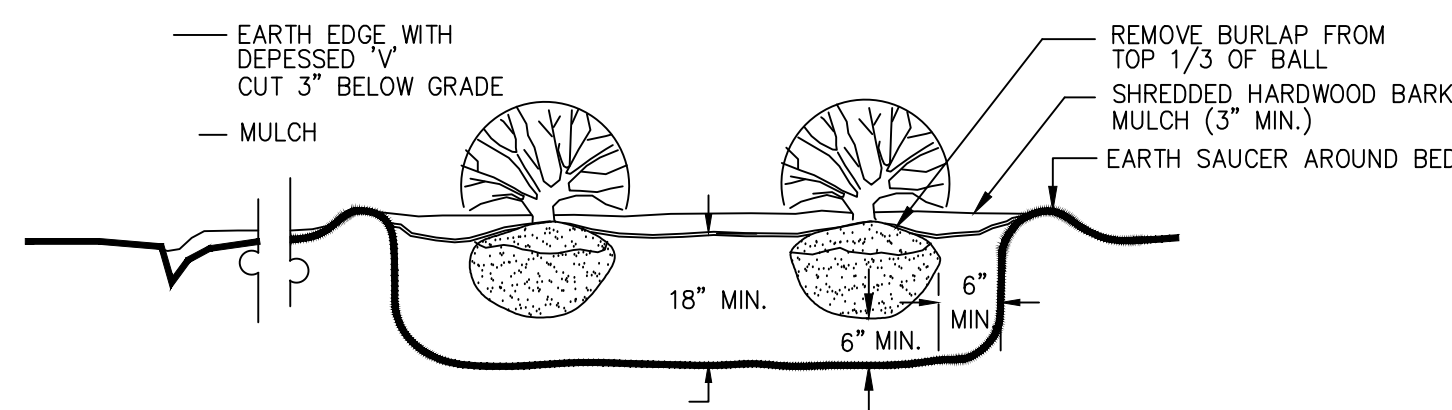




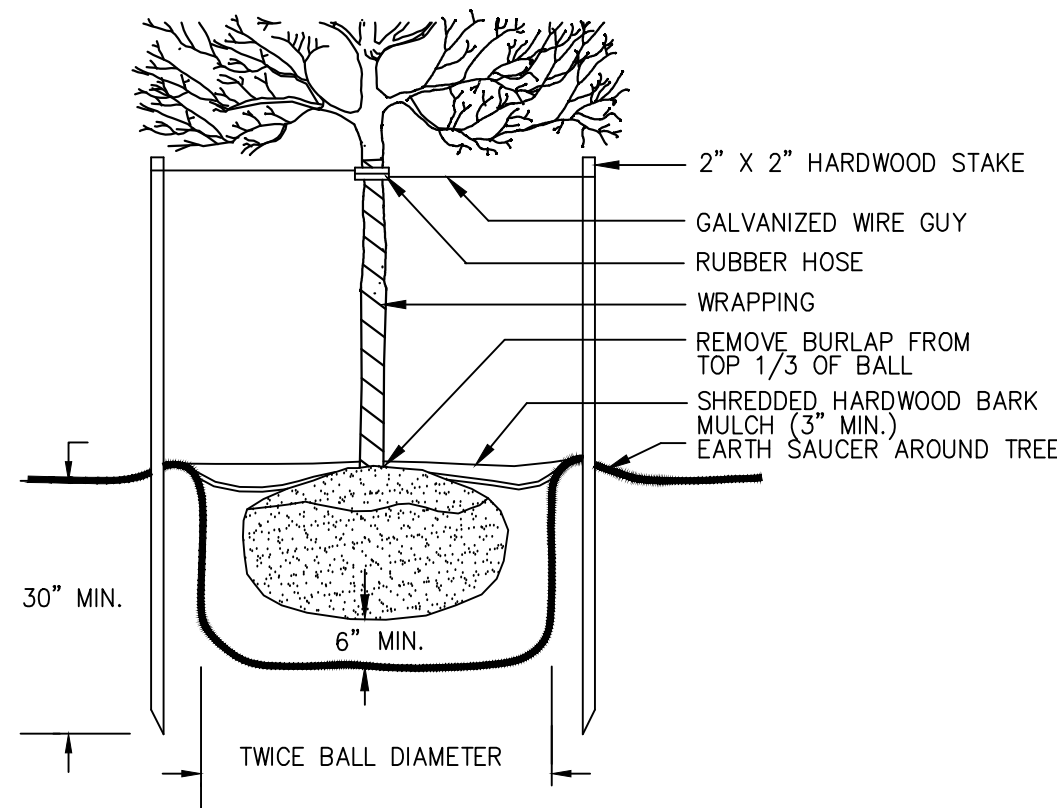
Drawing File: SA\2014 Projects\14-0010 VA Medical Bldg 17\6 DWG\Active Engineering Production\L-101.L-501.dwg
Plotted by: jpkender
Plotted Date: Mar 17, 2015 - 5:38pm



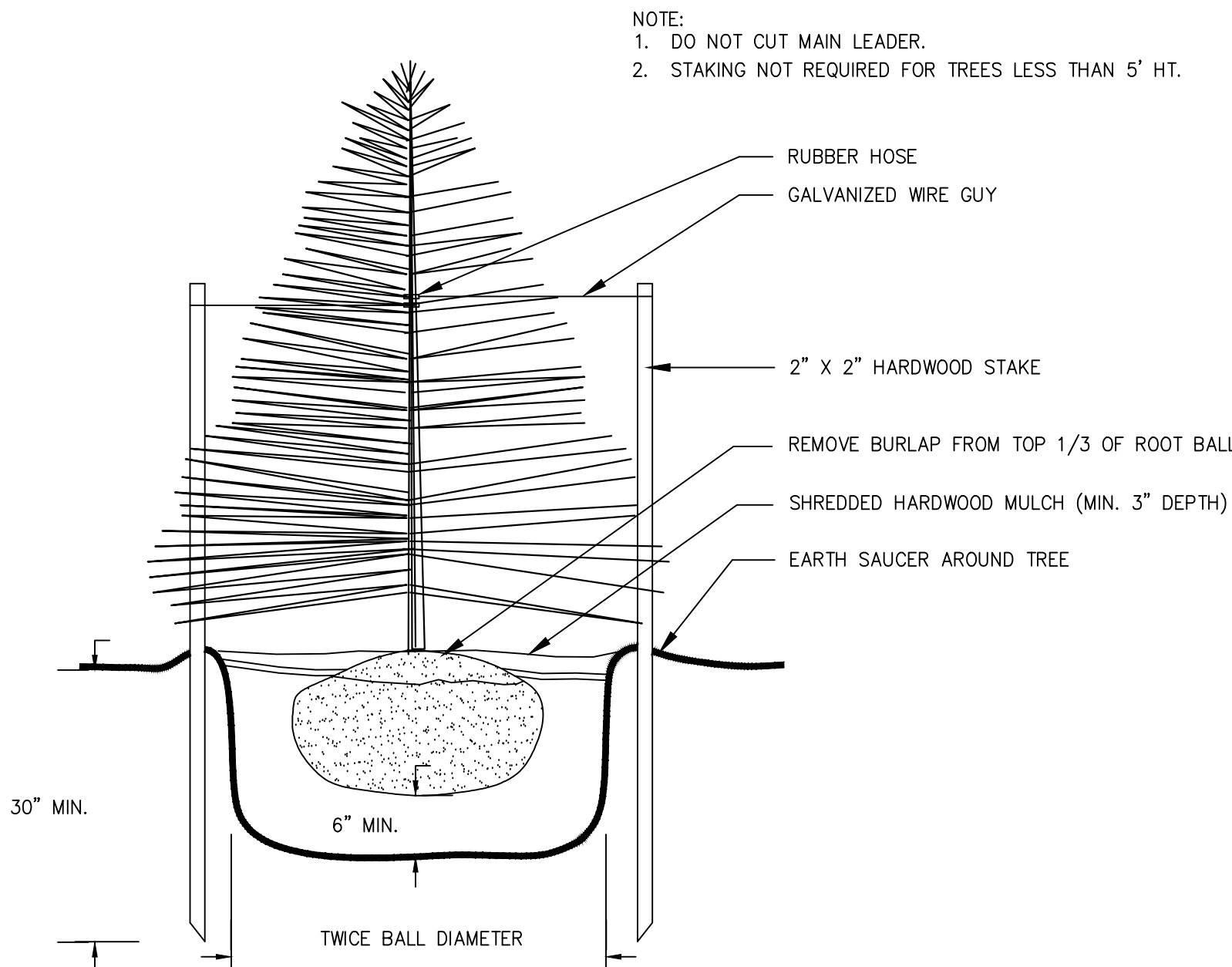
DETAIL: TREE PLANTING - OVER 4" CALIPER
N.T.S.



DETAIL: SHRUB PLANTING BED
N.T.S.



DETAIL: TREE PLANTING - UP TO 4" CALIPER
N.T.S.



DETAIL: CONIFEROUS TREE PLANTING - OVER 5' HT.
N.T.S.

Revisions:	Date

CONSULTANTS:



parker
DESIGN GROUP, INC.
ENGINEERS * SURVEYORS * PLANNERS * LANDSCAPE ARCHITECTS

816 Boulevard
Salem, Virginia 24153
Phone: 540-387-1153
Fax: 540-389-5767
www.parkerdg.com



ARCHITECT:



**TOLAND
MIZELL
MOLNAR**

590 MEANS ST NW SUITE 200
ATLANTA GA 30319
404.343.9774

Drawing Title:

**LANDSCAPING PLAN
DETAILS**

Approved: Project Director

Project Title:

**RENOVATE BUILDING 17
VA SALEM**

Location: **SALEM, VA**

Date: 03-18-2015

Project Number:

658-13-120

Building Number:


17

Drawing Number:

**2573
L-501**

Dwg. of

**OFFICE OF
CONSTRUCTION
AND FACILITIES
MANAGEMENT**

 Department of
Veterans Affairs