

ELECTRICAL LEGEND

SYMBOL	DESCRIPTION	SYMBOL	DESCRIPTION
LIGHTING		GROUNDING AND LIGHTNING PROTECTION	
	DOWNLIGHT LIGHTING FIXTURE		GROUND ROD
	LINEAR LED OR FLUORESCENT LIGHTING FIXTURE		TELECOM GROUND BAR
	LINEAR LED OR FLUORESCENT LIGHTING EMERGENCY FIXTURE ON NORMAL SWITCHED CIRCUIT WITH EMERGENCY CIRCUIT BACKUP.		SERVICE ENTRANCE MASTER GROUND BAR
		EQUIPMENT CONNECTIONS	
	EXIT LIGHTING FIXTURE. ARROW, WHEN USED, INDICATES DIRECTION. TYPE "X" U.O.N.		EQUIPMENT CONNECTION
	SINGLE POLE SWITCH, 20 A, 120/277 V.		MOTOR CONNECTION
	DOUBLE POLE SWITCH, 20 A, 120/277 V.		4" X 4" SQUARE JUNCTION BOX UON
	THREE-WAY SWITCH, 20 A, 120/277 V.		DISCONNECT SWITCH, 600V IN NEMA 1 ENCLOSURE UON. , 60A = SWITCH RATING, 3P = NO. OF POLES, 40A = FUSE RATING (NF INDICATES NON-FUSIBLE).
	DIMMER SWITCH		INTEGRAL DISCONNECT/STARTER
	MOTOR RATED SWITCH		STARTER
	OCCUPANCY SENSOR, WALL MOUNTED.		
	OCCUPANCY SENSOR; ACTUAL QUANTITY, TYPE MOUNTING CONFIGURATION, AND LAYOUT AS RECOMMENDED BY MANUFACTURER. SEE SPECIFICATIONS FOR ADDITIONAL INFORMATION.		
POWER DEVICES		WIRE, CONDUIT AND RACEWAY	
	DUPLEX CONVENIENCE RECEPTACLE, 20 A, 125 VAC, MOUNT 18" AFF UON.		BRANCH CIRCUIT OR FEEDER WIRING IN CONDUIT. PROVIDE 2#12, 1#12 GND, 3/4"C UON.
	GFI RECEPTACLE ABOVE COUNTER, MOUNT 48" AFF OR 6" ABOVE BACKSPASH OR COUNTER TOP WHERE COUNTER IS INDICATED.		HOMERUNS TO PANEL. PANEL AND CIRCUIT DESIGNATIONS AS INDICATED.
	DUPLEX CONVENIENCE RECEPTACLE WITH INTERNAL GROUND FAULT PROTECTION. 20 A, 125 VAC.		CONDUIT TURNED UP
	QUADRUPLEX CONVENIENCE RECEPTACLE MOUNTED IN TWO-GANG OUTLET BOX - RATED 20A, 125 VOLTS WITH SINGLE COVER PLATE.		CONDUIT TURNED DOWN
	JUNCTION BOX	DISTRIBUTION	
	DUPLEX RECEPTACLE, CEILING MOUNTED.		PANELBOARD - 480Y/277V
	SPECIAL PURPOSE RECEPTACLE. RATING AS INDICATED, MOUNT TO SUIT EQUIPMENT.		PANELBOARD - 208Y/120V
		UNDERGROUND	
	DATA/TELEPHONE OUTLET. X/X = # OF DATA/# OF VOICE CIRCUITS. TELEPHONE OUTLET MOUNTED AT 48" ABOVE FINISHED FLOOR.		UNDERGROUND DUCTBANK
	CARD READER		
	AUTOMATIC DOOR OPENER		

ABBREVIATIONS

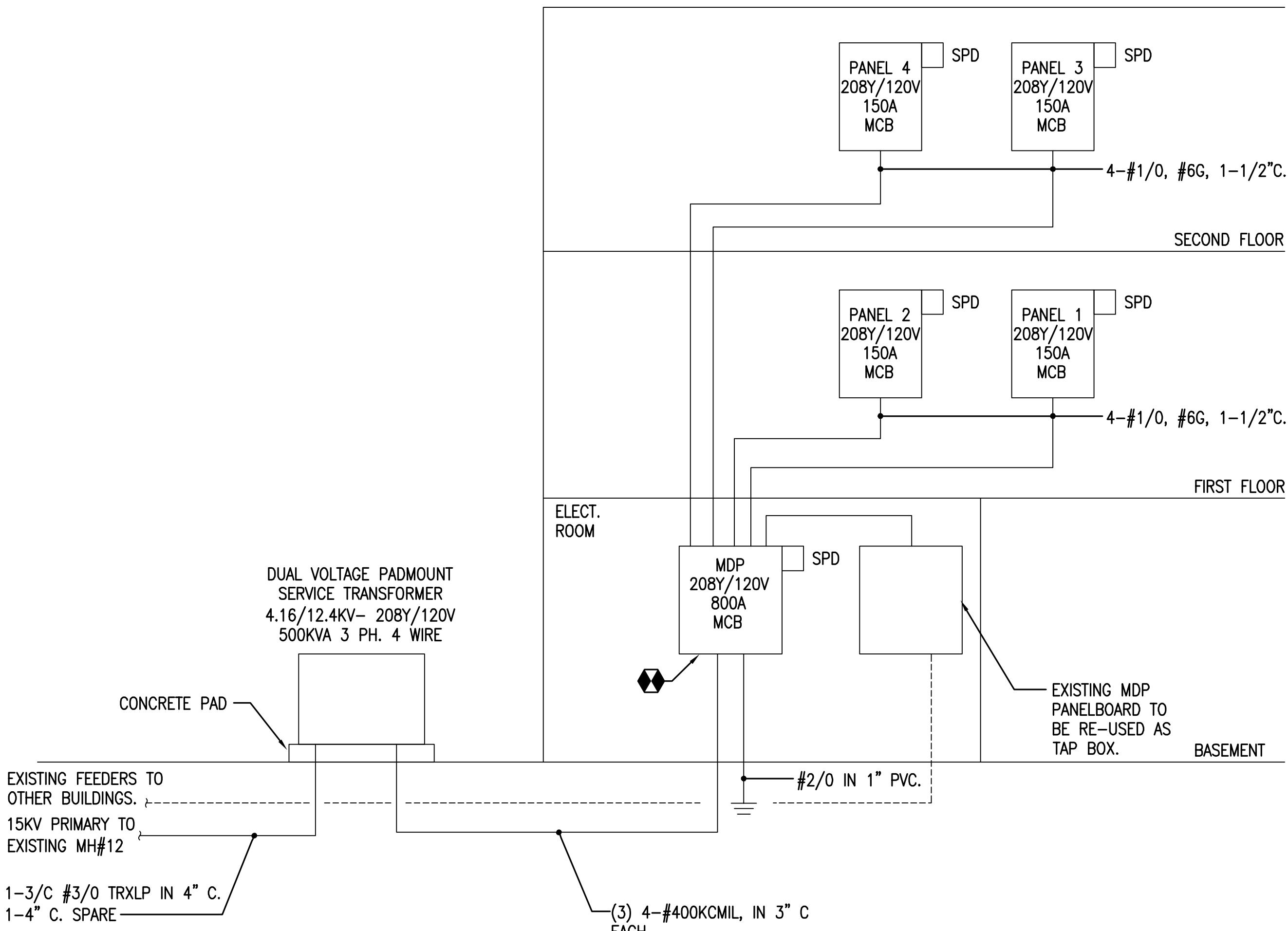
A	AMPERE	LAN	LOCAL AREA NETWORK
A/C	AIR CONDITIONING	LTG	LIGHTING
AC	ABOVE COUNTER	MCB	MAIN CIRCUIT BREAKER
AFF	ABOVE FINISHED FLOOR	MLO	MAIN LUG ONLY
AT	AMPERE TRIP	MT	MOUNT
ATC	AUTOMATIC TEMPERATURE CONTROL	MTD	MOUNTED
ATS	AUTOMATIC TRANSFER SWITCH	MTG HT	MOUNTING HEIGHT
AWG	AMERICAN WIRE GAUGE	N/C	NORMALLY CLOSED
BKBD	BACKBOARD	NF	NON-FUSED
BLDG	BUILDING	N/O	NORMALLY OPEN
BMS	BALANCED MAGNETIC SWITCH	NEU	NEUTRAL
BRKR	BREAKER	NIC	NOT IN CONTRACT
C	CONDUIT	P	POLE
CB	CIRCUIT BREAKER	PA	PUBLIC ADDRESS
CH	CONTINUOUS HOT	PH	PHASE
CCTV	CLOSED CIRCUIT TELEVISION	PNL	PANEL
CKT	CIRCUIT	PVC	POLY VINYL CHLORIDE
DISC SW	DISCONNECT SWITCH	QTY	QUANTITY
DWG	DRAWING	RE	RELOCATE
EC	EMPTY CONDUIT	RF	RETURN FAN
EF	EXHAUST FAN	RECEPT	RECEPTACLE
EMT	ELECTRICAL METALLIC TUBING	REQ'D	REQUIRED
EQ	EQUIPMENT	SC	SPLIT CIRCUIT
EWC	ELECTRIC WATER COOLER	SF	SUPPLY FAN
EWB	ELECTRIC WATER HEATER	SPD	SURGE PROTECTION DEVICE
EX	EXISTING TO REMAIN	S/N	SOLID NEUTRAL
FACP	FIRE ALARM CONTROL PANEL	SW	SWITCH
FCU	FAN COIL UNIT	TEL	TELEPHONE
FF	FURNITURE FEED	TGB	TELEPHONE GROUNDING BUSBAR
FLA	FULL LOAD AMPS	TTB	TELEPHONE TERMINAL BOARD
FLUOR	FLUORESCENT	TR	TELECOMMUNICATIONS ROOM
GFI	GROUND FAULT INTERRUPTER	UH	UNIT HEATER
GND	GROUND	UON	UNLESS OTHERWISE NOTED
GRS	GALVANIZED RIGID STEEL	V	VOLTS
HP	HORSEPOWER	VAC	VOLTS ALTERNATING CURRENT
IAW	IN ACCORDANCE WITH	VFCI	VA FURNISHED, CONTRACTOR INSTALLED
IDS	INTRUSION DETECTION SYSTEM	VFVI	VA FURNISHED, VA INSTALLED
KAIC	THOUSAND AMP INTERRUPTING CAPACITY, RMS SYMMETRICAL	W	WIRE
KCMIL	THOUSAND CIRCULAR MILS	WH	WATER HEATER
KWH	KILOWATT HOUR	WP	WEATHERPROOF
KVA	KILOVOLT AMPERE	XFMR	TRANSFORMER

ELECTRICAL NOTES

- GENERAL
- VISIT SITE. PRIOR TO SUBMISSION OF BID FOR A THOROUGH REVIEW OF EXISTING CONDITIONS THAT MAY AFFECT WORK. CONTRACTOR SHALL NOTIFY ENGINEER OF EXISTING CONDITIONS THAT MAY REQUIRE WORK NOT IDENTIFIED WITHIN DOCUMENTS PRIOR TO BID. PROVIDE ALL ELECTRICAL DISCONNECTION AND RECONNECTION OF EXISTING EQUIPMENT REQUIRED BY ALL TRADES.
 - ALL WORK SHALL COMPLY WITH VA REGULATIONS AND REQUIREMENTS.
 - WHERE WORK DISRUPTS EXISTING CONDITIONS, RESTORE EXISTING EQUIPMENT AND RESTORE ALL WALLS, FLOORS, CEILINGS, ETC. AND TO ORIGINAL CONDITION. REPAIR, PATCHING AND PAINTING OF WALLS, FLOORS AND CEILINGS SHALL BE PROVIDED PER ARCHITECTURAL SPECIFICATIONS. DISCONNECT AND RECONNECT ALL EXISTING EQUIPMENT AND DEVICES TO REMAIN AS REQUIRED TO RESTORE TO EXISTING OPERATING CONDITIONS.
 - UPDATE PANEL SCHEDULES IN PANELBOARDS AFFECTED BY THE PROJECT RENOVATION PER VA DESIGN MANUAL REQUIREMENTS INDICATING ACCURATE CIRCUIT DESCRIPTION, ROOM LOCATION AND CIRCUIT BREAKER FOR EACH AFFECTED CIRCUIT POSITION. PROVIDE TYPED PANEL SCHEDULES. HAND-WRITTEN PANEL SCHEDULES ARE NOT PERMITTED.
- DEMOLITION
- UNLESS OTHERWISE NOTED ALL ELECTRICAL EQUIPMENT IN THE AREAS OF CONSTRUCTION IS INTENDED TO BE REMOVED WHETHER COMPLETELY SHOWN OR NOT.
 - EQUIPMENT INDICATED FOR DEMOLITION, SUCH AS LIGHTING FIXTURES, WIRING DEVICES, CONDUITS, ETC., SHOWN ON PLANS ARE TO BE COMPLETELY REMOVED. CUT/CAP CONDUITS AT THE AREA OF WORK PERIMETER AND REMOVE CONDUIT WITHIN THE WORK AREA, DISCONNECT WIRING AT THE OVERCURRENT PROTECTIVE DEVICE AND REMOVE WIRING COMPLETELY FROM THE ABANDONED CONDUITS.
 - REMOVE ALL ACCESSIBLE ABANDONED WIRING OF ALL TYPES, OR CAP AND LABEL IN JUNCTION BOX FOR RE-USE, IN COMPLIANCE WITH THE NATIONAL ELECTRIC CODE.
 - MAINTAIN BRANCH CIRCUIT CONTINUITY AND/OR RESTORE, IF INTERRUPTED, ALL CONDUITS AND CONDUCTORS PASSING THROUGH RENOVATED AREAS AND SERVING UNDISTURBED AREAS NOT IN THE SCOPE OF WORK.
 - CONTRACTOR SHALL REFER TO HAZARDOUS MATERIAL ABATEMENT PLAN PRIOR TO PERFORMING ARCHITECTURAL OR MECHANICAL RENOVATION OR DEMOLITION WORK TO DETERMINE IF ASBESTOS, LEAD, PCB'S, BATTERIES, OR MERCURY IN FLUORESCENT BULBS WILL BE DISTURBED. ABATEMENT CONTRACTOR PRIOR TO GENERAL ARCHITECTURAL AND MECHANICAL RENOVATION AND DEMOLITION WORK SHALL REMOVE ALL HAZARDOUS MATERIALS.

ELECTRICAL DEMAND LOAD SUMMARY	
MECHANICAL EQUIPMENT	75.4 KVA
LAUNDRY EQUIPMENT	24.8 KVA
KITCHEN RANGE & HOOD (PER NEC 220.56)	16.0 KVA
LIGHTING & GENERAL RECEPTACLES (PER NEC 220.44)	18.7 KVA
OTHER BUILDING LOADS (FED FROM BLDG. 17)	45.0 KVA
	179.9 KVA
ADD FUTURE SPARE CAPACITY (20%):	36.0 KVA
SUBTOTAL	215.9 KVA

*SELECT 225KVA SERVICE TRANSFORMER



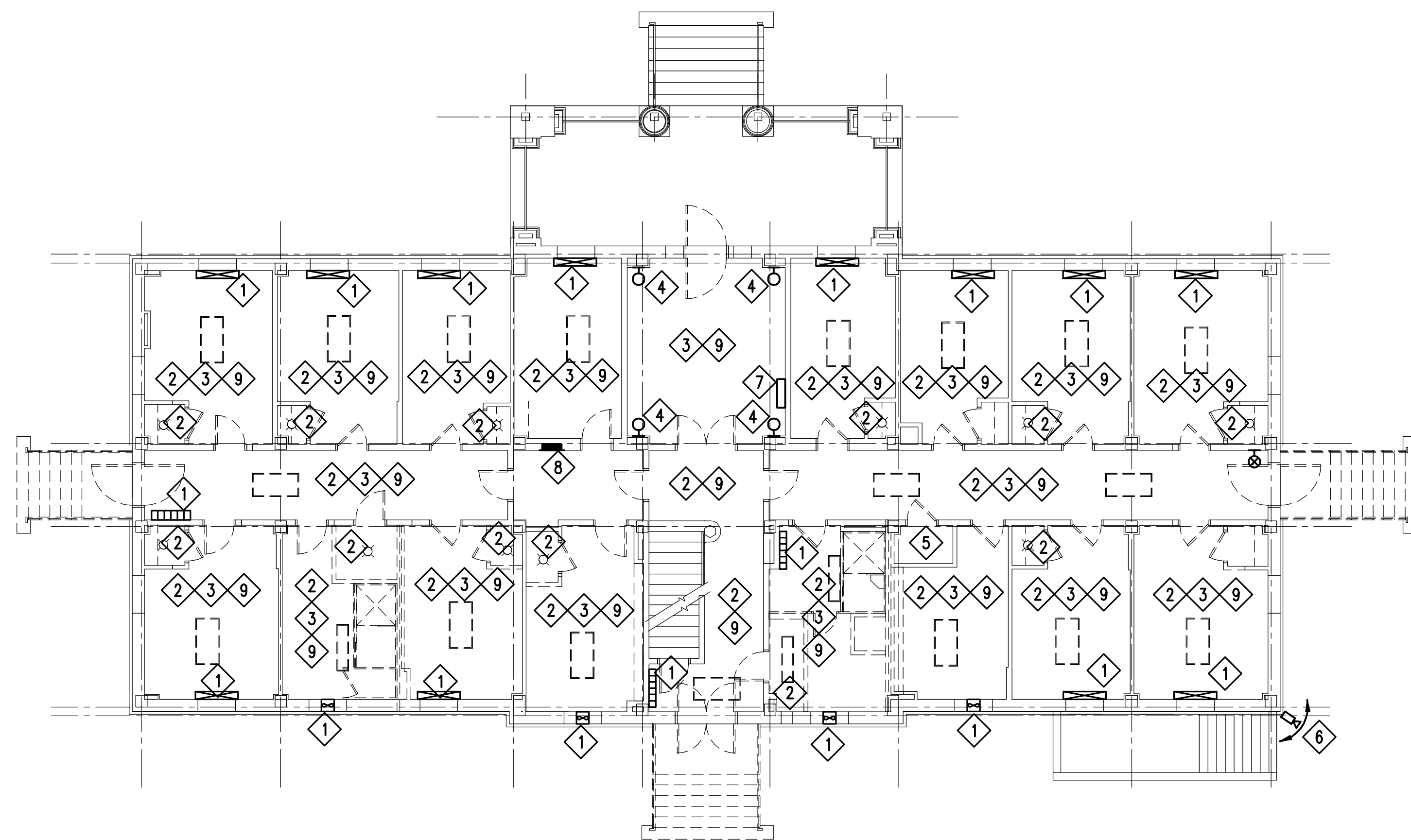
POWER RISER DIAGRAM
SCALE: NONE

FINAL SUBMITTAL

Revisions:		Date:		CONSULTANTS:		ARCHITECT:		Drawing Title:		Project Title:		Project Number:		Office of Construction and Facilities Management	
								ELECTRICAL LEGEND, NOTES AND FIXTURE SCHEDULE		RENOVATE BUILDING 17 VA SALEM		658-13-120		OFFICE OF CONSTRUCTION AND FACILITIES MANAGEMENT	
								Approved: Project Director		SALEM, VA		Building Number: 17		Department of Veterans Affairs	
										Date: 03-18-2015		Checked: PMP		Drawing Number: 2573	
												Dwg. E001 of			

Drawing File: \\VA\201\A\5350-Renovate Building 17 VAMC Salem, VA\Drawings\5350 ED101.dwg
Plotted By: jlgilead
Date: Mar 17, 2015 - 5:58pm

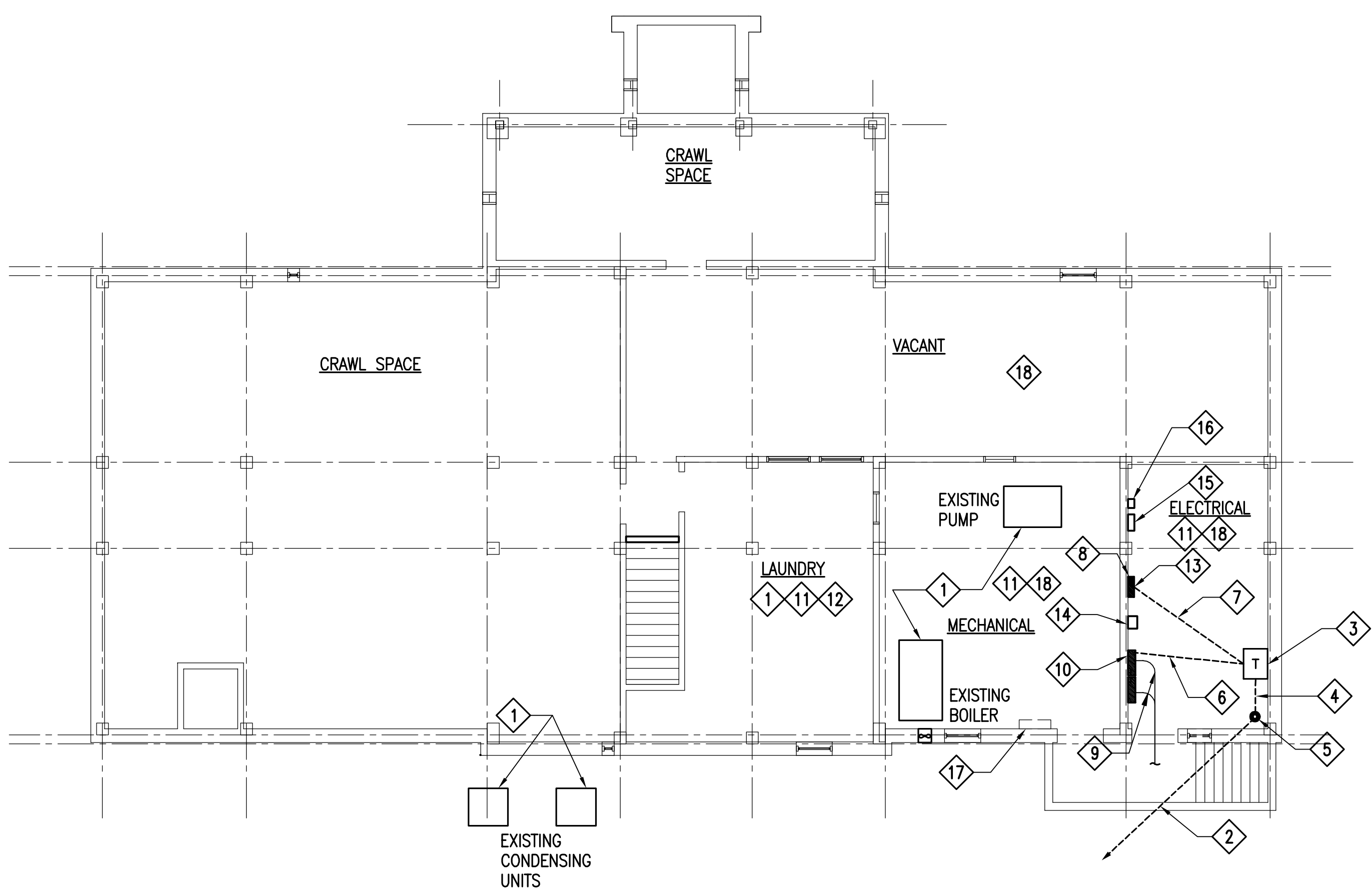
three inches = one foot
one and one half inches = one foot
one inch = one foot
three quarters inch = one foot
one half inch = one foot
three eighths inch = one foot
one quarter inch = one foot
one eighth inch = one foot



FIRST FLOOR
DEMOLITION PLAN - ELECTRICAL

SCALE: 1/8" = 1'-0"

0 4 8 16



BASEMENT
DEMOLITION PLAN - ELECTRICAL

SCALE: 1/8" = 1'-0"

0 4 8 16

DEMOLITION NOTES:

(FIRST FLOOR THIS SHEET ONLY)

- 1 DISCONNECT AND REMOVE ELECTRICAL CONNECTIONS FROM MECHANICAL EQUIPMENT BEING DEMOLISHED. ALL CONDUIT AND BRANCH CIRCUIT WIRING TO BE DISCONNECTED AND REMOVED BACK TO PANELBOARD.
- 2 DISCONNECT AND REMOVE ALL LIGHTING FIXTURES AND ASSOCIATED SWITCHES. BRANCH CIRCUIT WIRING TO BE REMOVED BACK TO PANELBOARD. BOXES AND CONDUITS TO BE RE-USED.
- 3 DISCONNECT AND REMOVE EXISTING RECEPTACLES, DEVICES, AND BRANCH CIRCUIT WIRING BACK TO PANELBOARD. BOX AND CONDUIT TO BE RE-USED FOR NEW WIRING.
- 4 REMOVE EXISTING WALL MOUNTED INCANDESCENT FIXTURE FOR RESTORATION AND REPLACED. EXISTING BOX AND CONDUIT TO REMAIN FOR REUSE. REMOVE EXISTING CONDUCTORS.
- 5 EXISTING TELCOM CLOSET. EXISTING LENEL ACCESS CONTROLLER AND TELCOM EQUIPMENT TO REMAIN.
- 6 EXISTING EXTERIOR WP CCTV TO REMAIN. EXISTING CIRCUIT TO REMAIN.
- 7 REMOVE EXISTING FIRE ALARM CONTROL PANEL. SEE SHEET FA101 FOR NEW PANEL LOCATION.
- 8 REMOVE EXISTING PANEL A. REMOVE FEEDER AND CONDUIT BACK TO SERVING PANEL.
- 9 REMOVE EXISTING FIRE ALARM DEVICES.

DEMOLITION NOTES:

(BASEMENT THIS SHEET ONLY)

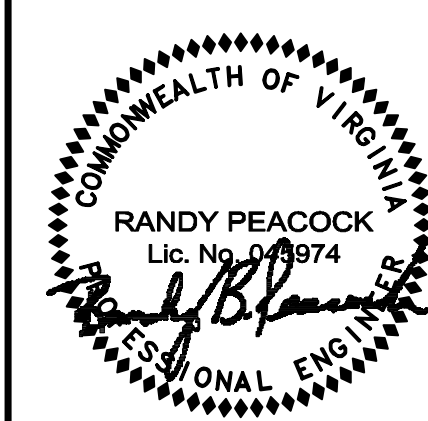
- 1 DISCONNECT AND REMOVE ELECTRICAL CONNECTIONS FROM MECHANICAL EQUIPMENT BEING DEMOLISHED. ALL CONDUIT AND BRANCH CIRCUIT WIRING TO BE DISCONNECTED BACK TO PANELBOARD.
- 2 REMOVE (1) 4/C #3/0 PRIMARY CABLE UP TO MANHOLE #12. EXISTING 3" CONDUIT TO REMAIN. SEE SHEET ES101.
- 3 AFTER NEW PANEL IS INSTALLED AND FEEDERS RECONNECTED, REMOVE EXISTING 150 KVA TRANSFORMER.
- 4 AFTER NEW PANEL IS INSTALLED AND FEEDERS RECONNECTED, REMOVE EXISTING PRIMARY CABLES MOUNTED ON WALL BETWEEN SURGE ARRESTERS AND TRANSFORMER.
- 5 AFTER NEW PANEL IS INSTALLED AND FEEDERS RECONNECTED, REMOVE EXISTING SURGE ARRESTERS.
- 6 REMOVE EXISTING WIRING AND CONDUIT FROM TRANSFORMER SECONDARY TO DISTRIBUTION PANELBOARD.
- 7 REMOVE EXISTING WIRING AND CONDUIT FROM TRANSFORMER SECONDARY TO 3 PHASE PANELBOARD.
- 8 REMOVE EXISTING 3 PHASE PANELBOARD.
- 9 DISCONNECT EXISTING FEEDERS SERVING OTHER BUILDINGS, TAPE ENDS, AND COIL FOR RE-USE. COORDINATE DOWNTIME WITH EACH BUILDING TO MINIMIZE POWER OUTAGE.
- 10 EXISTING DISTRIBUTION PANEL-REMOVE INTERIOR AND LEAVE ONE SECTION TO REUSE AS TAP BOX.
- 11 REMOVE EXISTING WIRING DEVICES. DEVICE BOXES AND CONDUIT TO REMAIN. REMOVE BRANCH CIRCUIT CONDUCTORS BACK TO PANELBOARD.
- 12 DISCONNECT AND REMOVE ALL LIGHTING FIXTURES AND ASSOCIATED SWITCHES. BRANCH CIRCUIT WIRING TO BE REMOVED BACK TO PANELBOARD. BOXES AND CONDUITS TO BE RE-USED.
- 13 EXISTING 3 PHASE PANELBOARD CIRCUITS TO REMAIN SHALL BE RELOCATED TO NEW PANEL AS REQUIRED.
- 14 EXISTING STREET LIGHT CONTROLS TO BE REMOVED AND REPLACED.
- 15 EXISTING FIRE ALARM TAP BOX TO BE REMOVED AND REPLACED. REFER TO SHEET FA101.
- 16 EXISTING SIMPLEX NETWORK SYSTEM INTEGRATOR TO REMAIN AND TO BE CONNECTED TO NEW FIRE ALARM CONTROL PANEL. SEE SHEET FA101 FOR NEW FIRE ALARM PANEL.
- 17 EXISTING TELEPHONE AND FIBER INCOMING SERVICE TO REMAIN. REMOVE ALL ABANDONED CABLES AND PROVIDE APPROPRIATE COVER TO EXISTING BOX.
- 18 EXISTING LIGHT FIXTURES AND BRANCH CIRCUITRY IN THIS SPACE TO REMAIN AND BE RECONNECTED TO NEW PANELBOARD.

FINAL SUBMITTAL

CONSULTANTS:

CLARK•NEXSEN

440 MARTIN LUTHER KING, JR. BLVD
MACON, GEORGIA 31201
478-743-8415 FAX 478-743-8239
WWW.CLARKNEXSEN.COM



ARCHITECT:

TOLAND
MIZELL
MOLNAR

590 MEANS ST NW SUITE 200
ATLANTA GA 30319
404.343.9774

Drawing Title:
BASEMENT AND FIRST FLOOR
DEMOLITION PLAN -
ELECTRICAL

Approved: Project Director

Project Title:
RENOVATE BUILDING 17
VA SALEM

Location:
SALEM, VA

Date:
03-18-2015

Checked:

Drawn:

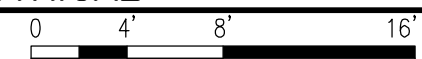
Project Number:
658-13-120
Building Number:
17
Drawing Number:
2573
ED101
Dwg. of

OFFICE OF
CONSTRUCTION
AND FACILITIES
MANAGEMENT

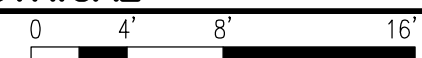




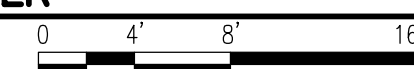
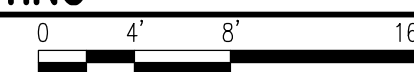
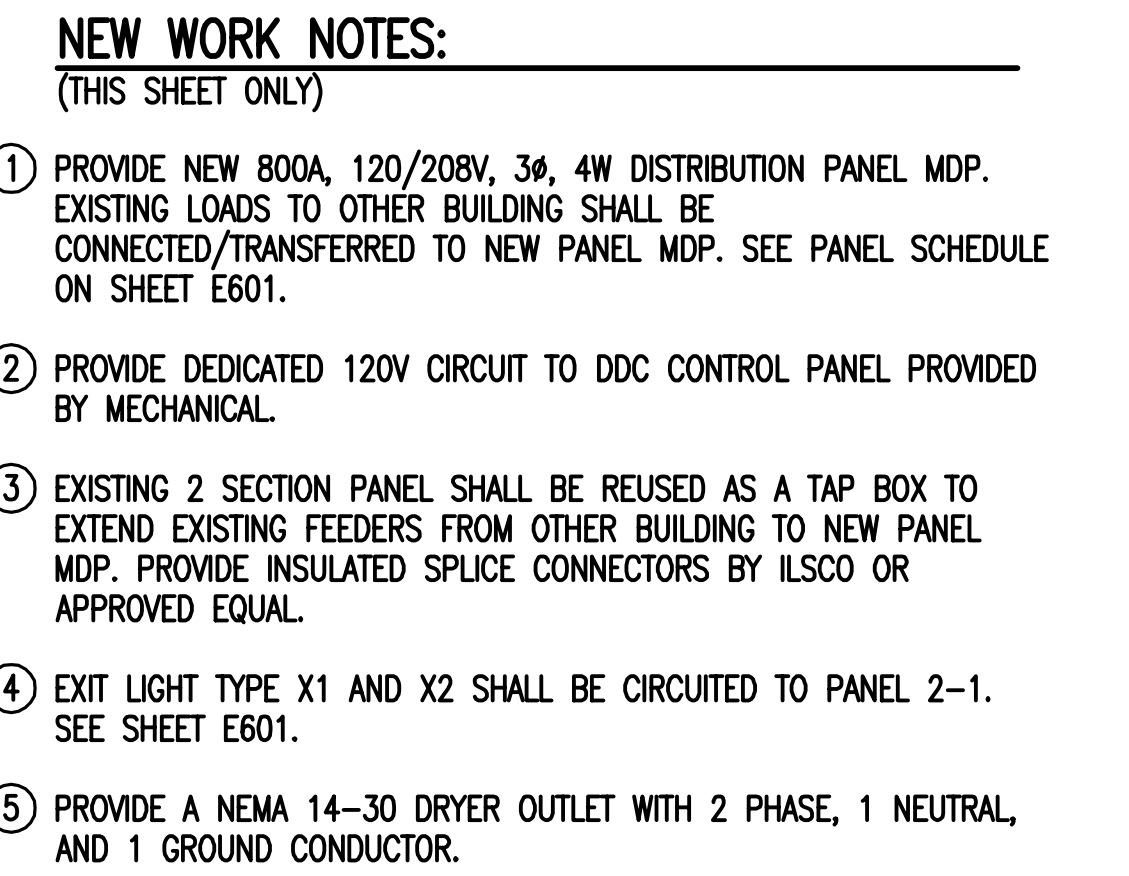
SCALE: $1/8" = 1'-0"$



SCALE: $1/8" = 1'-0"$

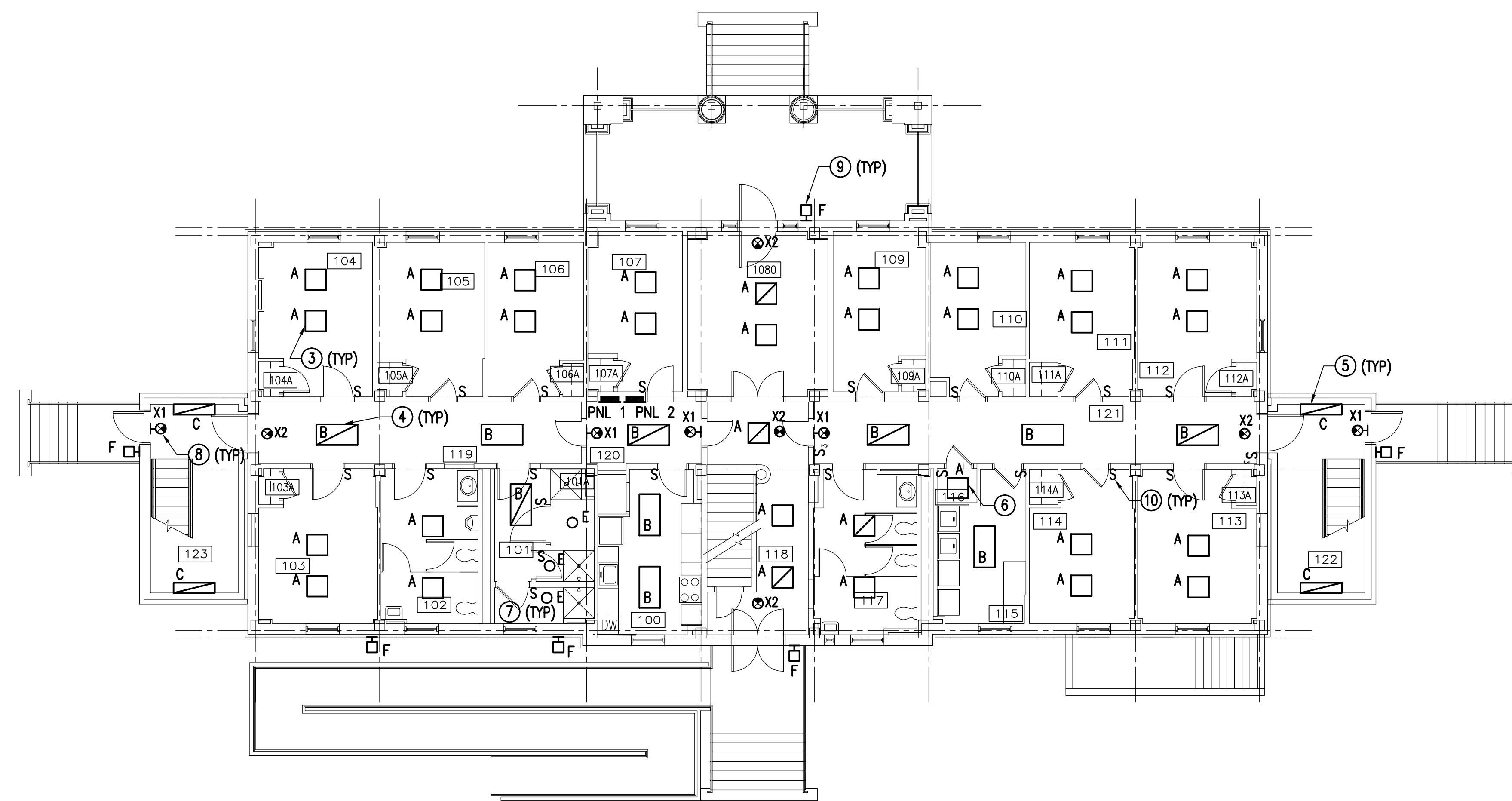


<div>Revisions:</div> <div>Date</div>	CONSULTANTS:	<div><div><div>COMMONWEALTH OF VIRGINIA</div><div>RANDY PEACOCK</div><div>Lic. No. 00974</div><div><i>Randy Peacock</i></div><div>PROFESSIONAL ENGINEER</div></div></div>	ARCHITECT:	<div><div><div><div></div><div>TOLAND</div><div>MIZELL</div><div>MOLNAR</div></div></div><div>590 MEANS ST NW SUITE 200</div><div>ATLANTA GA 30319</div><div>404.343.9774</div></div>	Drawing Title:	Project Title:	Project Number:	<div>OFFICE OF</div> <div>CONSTRUCTION</div> <div>AND FACILITIES</div> <div>MANAGEMENT</div> <div><div></div><div>Department of Veterans Affairs</div></div>	
			<div>CLARK♦NEXSEN</div> <div>440 MARTIN LUTHER KING, JR. BLVD</div> <div>MACON, GEORGIA 31201</div> <div>478-743-8415 FAX 478-743-8239</div> <div>WWW.CLARKNEXSEN.COM</div>			SECOND FLOOR AND ATTIC	RENOVATE BUILDING 17		658-13-120
					DEMOLITION PLAN – ELECTRICAL	VA SALEM	Building Number:		
					Approved: Project Director	Location:	SALEM, VA		17
					Date:	Checked:	Drawn:	Drawing Number:	
					03-18-2015	RBP	SJB	ED102	
								Dwg. of	

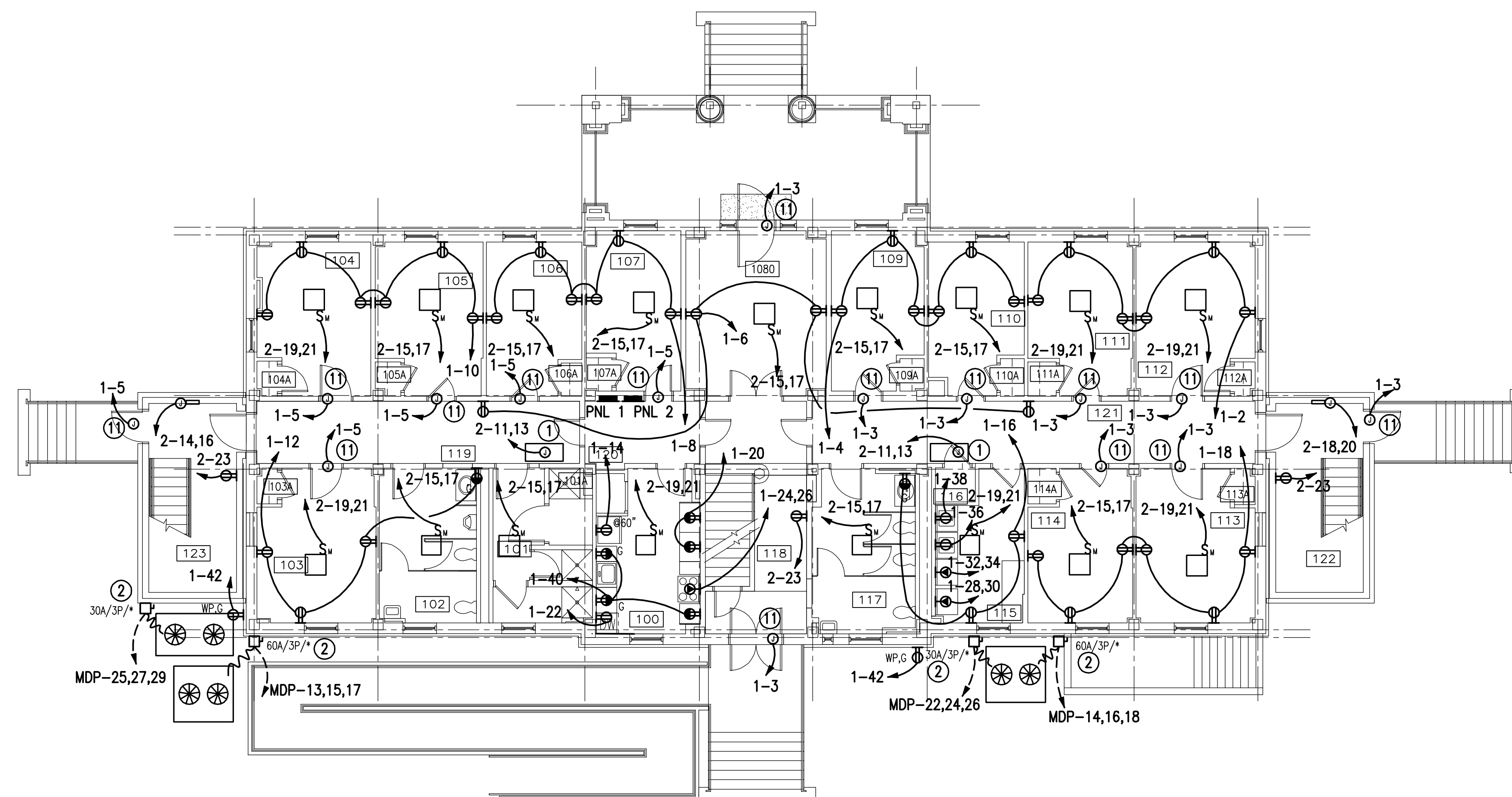
 Department of
Veterans Affairs

- GENERAL NOTES:**
1. LIGHTING FIXTURE SCHEDULE IS SHOWN ON SHEET E601.
 2. POE LIGHTING ENGINES ARE IN SECOND FLOOR CLOSET 222 IN ROOM 208.

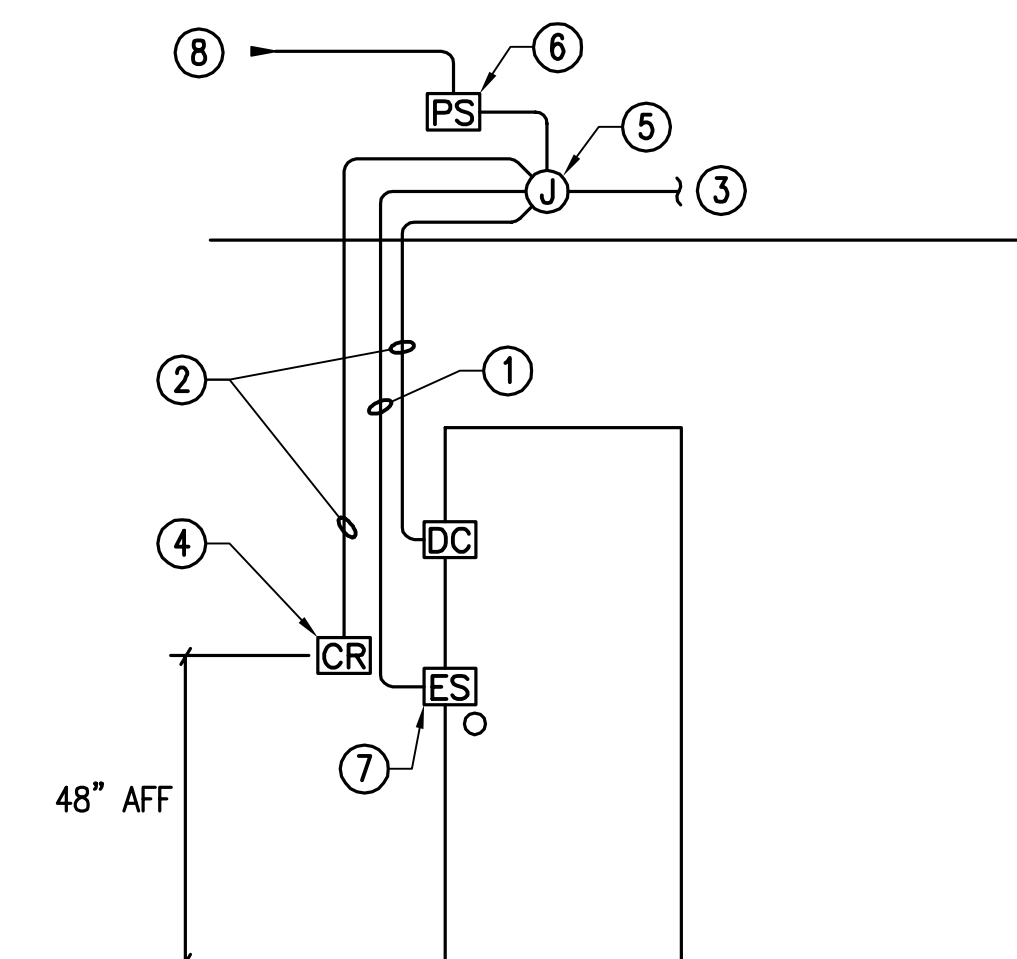
- NEW WORK NOTES:**
(THIS SHEET ONLY)
- 1 PROVIDE JUNCTION BOX ABOVE CEILING FOR MECHANICAL CONTROLLERS BC-1 AND BC-2.
 - 2 PROVIDE FUSE SIZE PER MANUFACTURER NAMEPLATE DATA.
 - 3 2x2 LED LIGHT FIXTURE EQUIPPED TO OPERATE WITH REDWOOD LIGHTING SYSTEM. PROVIDE LOW VOLTAGE CABLING FROM LIGHT FIXTURE TO GATEWAY AND TO ENGINE UNIT.
 - 4 2x4 LED LIGHT FIXTURE EQUIPPED TO OPERATE WITH REDWOOD LIGHTING SYSTEM. PROVIDE LOW VOLTAGE CABLING FROM LIGHT FIXTURE TO GATEWAY AND TO ENGINE UNIT.
 - 5 LED LIGHT FIXTURE EQUIPPED TO OPERATE WITH REDWOOD LIGHTING SYSTEM. PROVIDE LOW VOLTAGE CABLING FROM LIGHT FIXTURE TO GATEWAY AND TO ENGINE UNIT.
 - 6 2x4 LED LIGHT FIXTURE EQUIPPED TO OPERATE WITH REDWOOD LIGHTING SYSTEM. PROVIDE LOW VOLTAGE CABLING FROM LIGHT FIXTURE TO GATEWAY AND TO ENGINE UNIT. MOUNT FIXTURE SUSPENDED FROM CEILING AT 7'-0" ABOVE FINISHED FLOOR.
 - 7 DOWNLIGHT LED LIGHT FIXTURE EQUIPPED TO OPERATE WITH REDWOOD LIGHTING SYSTEM. PROVIDE LOW VOLTAGE CABLING FROM LIGHT FIXTURE TO GATEWAY AND TO ENGINE UNIT.
 - 8 EXIT LIGHT TYPE X1 AND X2 SHALL BE CIRCUITED TO PANEL 2-1. SEE SHEET E601.
 - 9 EXTERIOR LED LIGHT FIXTURE EQUIPPED TO OPERATE WITH REDWOOD LIGHTING SYSTEM. PROVIDE LOW VOLTAGE CABLING FROM LIGHT FIXTURE TO GATEWAY AND TO ENGINE UNIT.
 - 10 ROOM WALL SWITCH SHALL CONNECT TO LIGHT FIXTURES EQUIPPED WITH REDWOOD LIGHTING SYSTEM.
 - 11 PROVIDE 120 VOLT CIRCUIT FOR DOOR STRIKE AND CONNECT TO PANEL 1. RUN 3 #12 WIRES IN 1/2" C. REFER TO DETAIL, THIS SHEET.



**FIRST FLOOR
NEW WORK PLAN - LIGHTING**
SCALE: 1/8" = 1'-0"



**FIRST FLOOR
NEW WORK PLAN - POWER**
SCALE: 1/8" = 1'-0"



- NOTES:**
(FOR ACCESS CONTROL DIAGRAM ONLY)
- 1 PROVIDE 3/4" CONDUIT CONNECTION INTO DOOR FRAME.
 - 2 PROVIDE 3/4" CONDUIT TO JUNCTION BOX ABOVE ACCESSIBLE CEILING.
 - 3 TO DOOR ACCESS SYSTEM CONTROL PANEL.
 - 4 CARD READER WHERE INDICATED ON PLANS.
 - 5 JUNCTION BOX ABOVE ACCESSIBLE CEILING NEAR CONTROLLED DOOR.
 - 6 LOCAL POWER SUPPLY FOR ELECTRONIC DOOR HARDWARE ABOVE ACCESSIBLE CEILING NEAR CONTROLLED DOOR.
 - 7 ELECTRIC STRIKE DOOR LOCK
 - 8 120V BRANCH CIRCUIT CONNECTION AS INDICATED.

ACCESS DOOR CONTROL DIAGRAM
SCALE: NONE

FINAL SUBMITTAL

CONSULTANTS: CLARK•NEXSEN 440 MARTIN LUTHER KING, JR. BLVD MACON, GEORGIA 31201 478.743.8415 FAX 478.743.8239 WWW.CLARKNEXSEN.COM		ARCHITECT: TOLAND MIZELL MOLNAR 590 MEANS ST NW SUITE 200 ATLANTA GA 30319 404.343.9774		Drawing Title: FIRST FLOOR NEW WORK PLAN - ELECTRICAL		Project Title: RENOVATE BUILDING 17 VA SALEM		Project Number: 658-13-120		OFFICE OF CONSTRUCTION AND FACILITIES MANAGEMENT	
Revisions:		Date:		Approved: Project Director		Location: SALEM, VA		Building Number: 17		Department of Veterans Affairs	
Date:		Checked: RBP		Drawn: SJB		Date: 03-18-2015		Drawing Number: E102		Dwg. of	

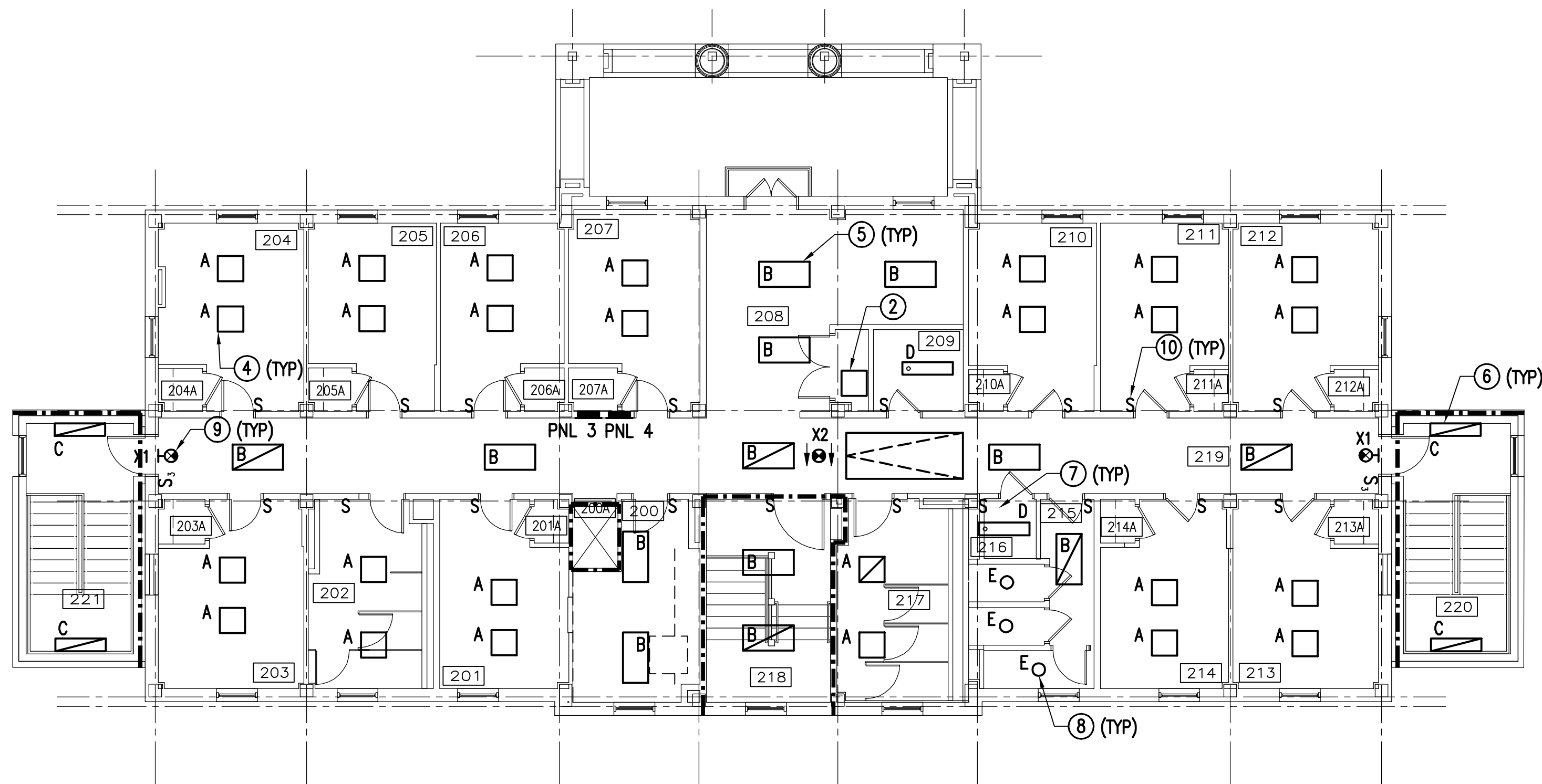
GENERAL NOTES:

1. LIGHTING FIXTURE SCHEDULE IS SHOWN ON SHEET E601.

NOTES:

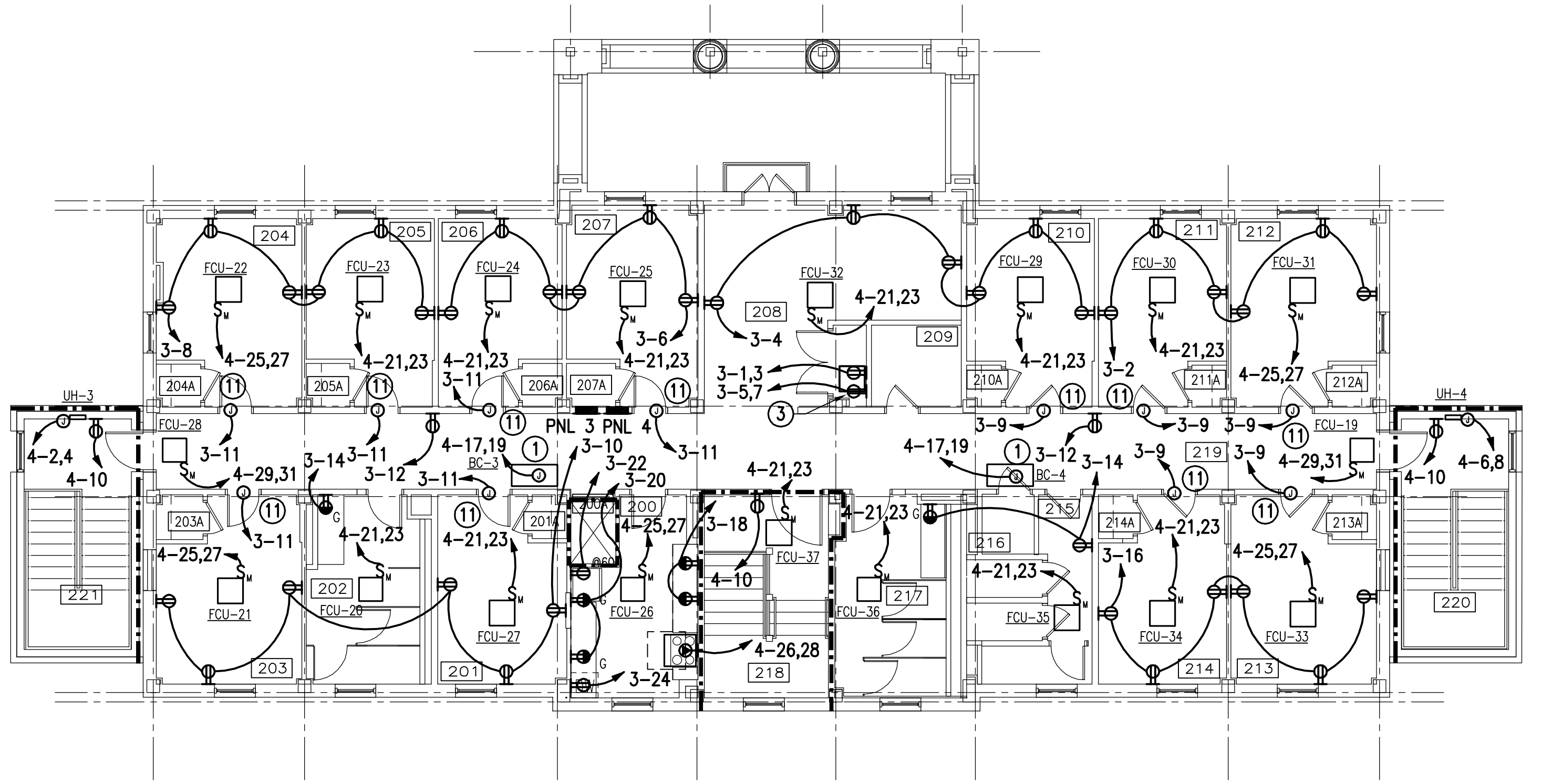
(THIS SHEET ONLY)

- PROVIDE JUNCTION BOX ABOVE CEILING FOR MECHANICAL CONTROLLERS BC-3 AND BC-4. COORDINATE EXACT LOCATION WITH MECHANICAL.
- LOCATE REDWOOD DIRECTOR AND ENGINES AT WALL AS SHOWN. PROVIDE WALL MOUNT EQUIPMENT RACK TO MOUNT ALL UNITS.
- PROVIDE 2 QUAD RECEPTACLES ON DEDICATED CIRCUITS TO SERVE EACH ENGINE AND DIRECTOR.
- 2x2 LED LIGHT FIXTURE EQUIPPED TO OPERATE WITH REDWOOD LIGHTING SYSTEM. PROVIDE LOW VOLTAGE CABLING FROM LIGHT FIXTURE TO GATEWAY AND TO ENGINE UNIT.
- 2x4 LED LIGHT FIXTURE EQUIPPED TO OPERATE WITH REDWOOD LIGHTING SYSTEM. PROVIDE LOW VOLTAGE CABLING FROM LIGHT FIXTURE TO GATEWAY AND TO ENGINE UNIT.
- LED LIGHT FIXTURE EQUIPPED TO OPERATE WITH REDWOOD LIGHTING SYSTEM. PROVIDE LOW VOLTAGE CABLING FROM LIGHT FIXTURE TO GATEWAY AND TO ENGINE UNIT.
- 1x4 LED LIGHT FIXTURE EQUIPPED TO OPERATE WITH REDWOOD LIGHTING SYSTEM. PROVIDE LOW VOLTAGE CABLING FROM LIGHT FIXTURE TO GATEWAY AND TO ENGINE UNIT.
- DOWNLIGHT LED LIGHT FIXTURE EQUIPPED TO OPERATE WITH REDWOOD LIGHTING SYSTEM. PROVIDE LOW VOLTAGE CABLING FROM LIGHT FIXTURE TO GATEWAY AND TO ENGINE UNIT.
- EXIT LIGHT SHALL BE CIRCUITED TO PANEL 4-1. SEE SHEET E601.
- ROOM WALL SWITCH SHALL CONNECT TO LIGHT FIXTURES EQUIPPED WITH REDWOOD LIGHTING SYSTEM.
- PROVIDE 120 VOLT CIRCUIT FOR DOOR STRIKE AND CONNECT TO PANEL 3. RUN 3 #12 WIRES IN 1/2" C. COORDINATE DOOR CONTROL REQUIREMENT FOR A COMPLETE AND OPERABLE INSTALLATION.



SECOND FLOOR
NEW WORK PLAN - LIGHTING




SCALE: 1/8" = 1'-0"

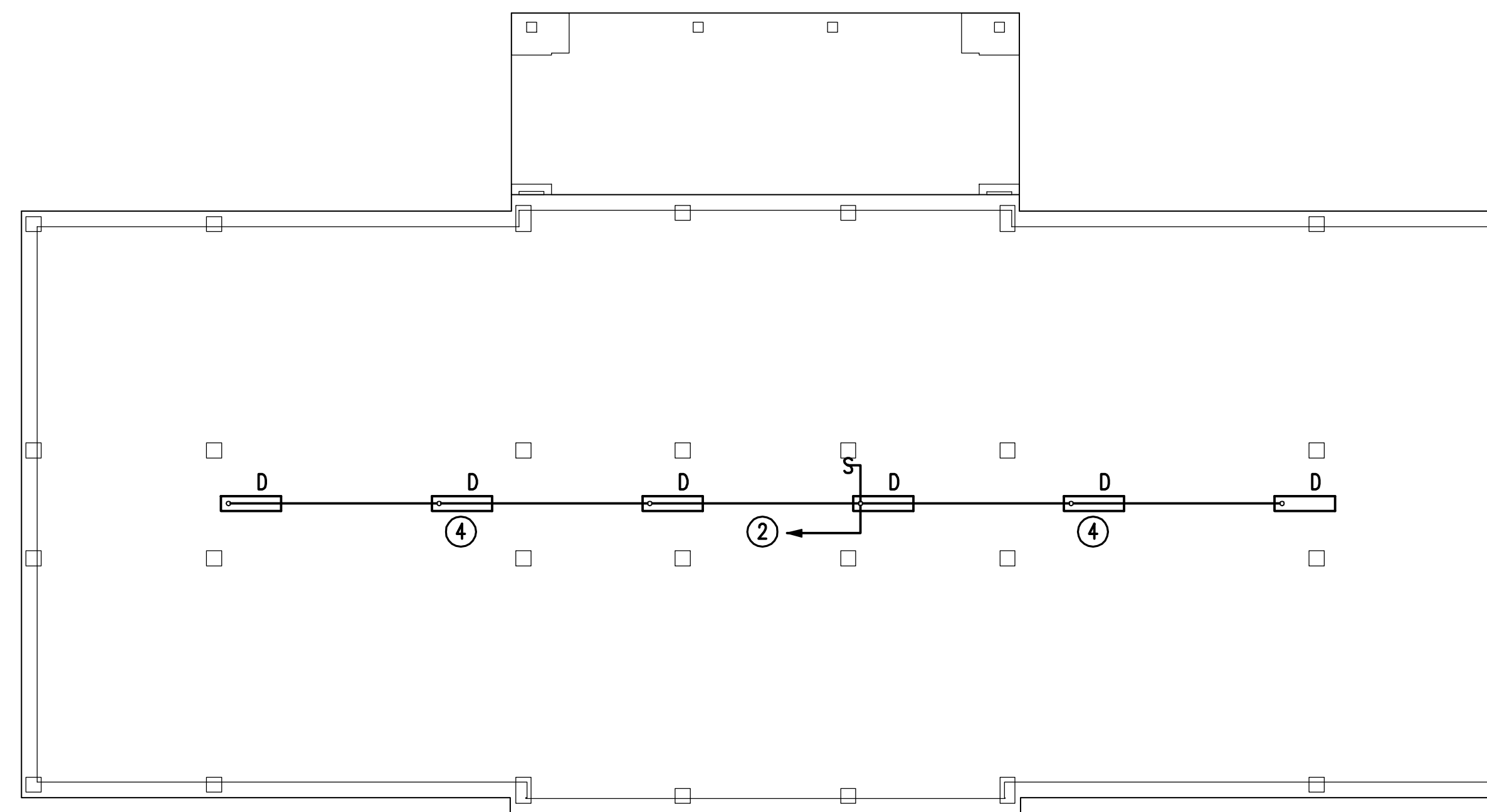


SECOND FLOOR
NEW WORK PLAN - POWER

SCALE: 1/8" = 1'-0"

FINAL SUBMITTAL

		CONSULTANTS:			ARCHITECT:		Drawing Title: SECOND FLOOR NEW WORK PLAN ELECTRICAL		Project Title: RENOVATE BUILDING 17 VA SALEM		Project Number: 658-13-120		OFFICE OF CONSTRUCTION AND FACILITIES MANAGEMENT  Department of Veterans Affairs		
		CLARK•NEXSEN 440 MARTIN LUTHER KING, JR. BLVD MACON, GEORGIA 31201 478-743-8415 FAX 478-743-8239 WWW.CLARKNEXSEN.COM			 TOLAND MIZELL MOLNAR 590 MEANS ST NW SUITE 200 ATLANTA GA 30319 404.343.9774						Building Number: 17				
							Approved: Project Director		Location: SALEM, VA		Drawing Number: 2573				
									Date: 03-18-2015		Checked: RBP			Drawn: SJB	
Revisions:		Date:												Dwg. of E103	



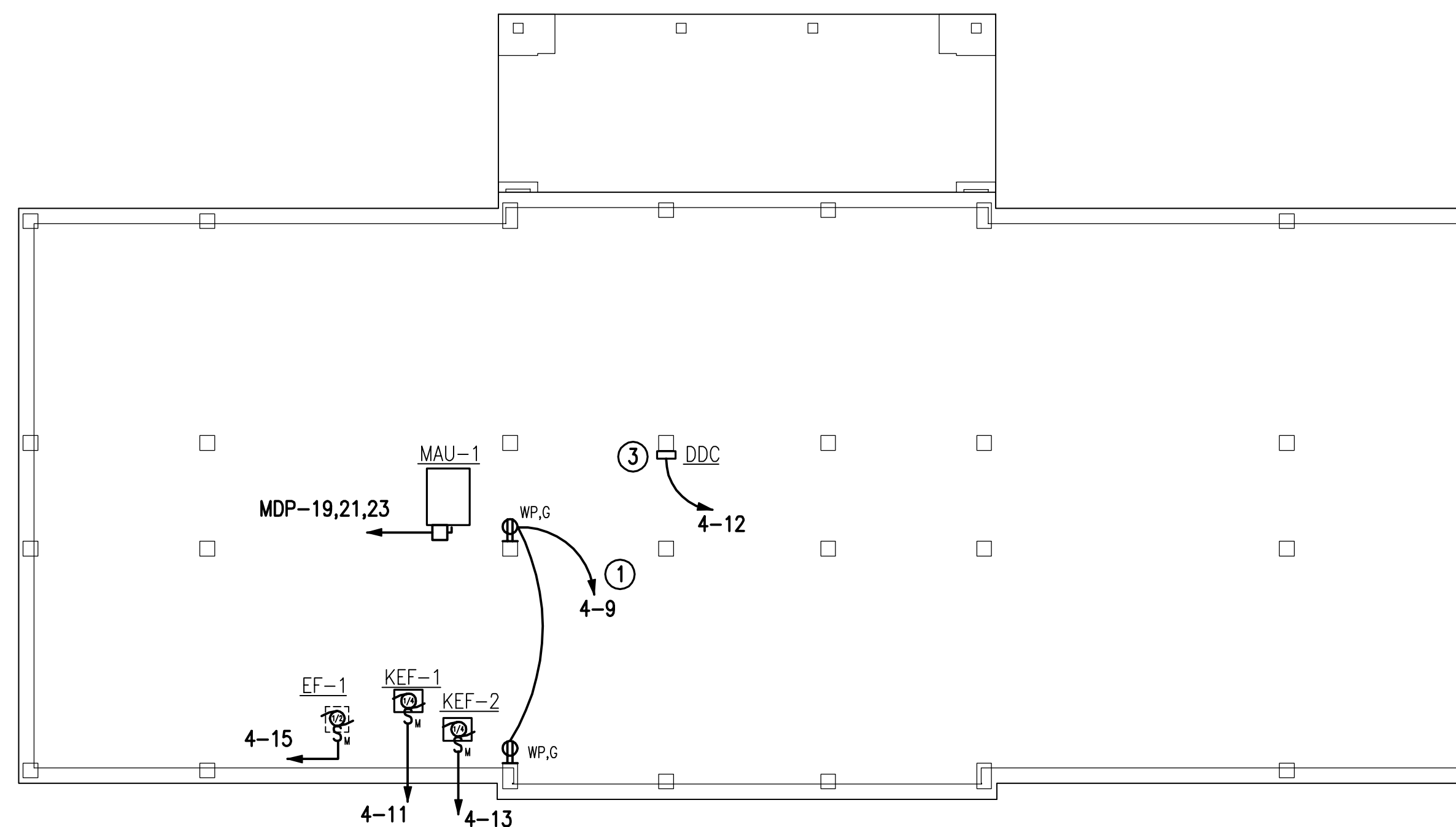
NEW WORK NOTES:
(THIS SHEET ONLY)

- ① CONNECT TO DEDICATED CIRCUIT AS INDICATED.
- ② 1x4 LED LIGHT FIXTURE EQUIPPED TO OPERATE WITH REDWOOD LIGHTING SYSTEM. PROVIDE LOW VOLTAGE CABLING FROM LIGHT FIXTURE TO GATEWAY SYSTEM.
- ③ PROVIDE DEDICATED 120V CIRCUIT FOR DDC CONTROL PANEL PROVIDED BY MECHANICAL.
- ④ PROVIDE BATTERY BACKUP OPTION. SEE FIXTURE SCHEDULE, SHEET E601.



ATTIC NEW WORK PLAN – LIGHTING

SCALE: $1/8" = 1'-0"$



ATTIC
NEW WORK PLAN – POWER

SCALE: $1/8" = 1'-0"$

<div>Revisions:</div> <div>Date</div>	CONSULTANTS:	<div><div><div>COMMONWEALTH OF VIRGINIA</div><div>RANDY PEACOCK</div><div>Lic. No. 00914</div><div><i>Randy Peacock</i></div><div>PROFESSIONAL ENGINEER</div></div></div>	ARCHITECT:	<div><div><div>TOLAND</div><div>MIZELL</div><div>MOLNAR</div></div><div>590 MEANS ST NW SUITE 200</div><div>ATLANTA GA 30319</div><div>404.343.9774</div></div>	Drawing Title:	ATTIC NEW WORK PLAN ELECTRICAL	Project Title:	RENOVATE BUILDING 17 VA SALEM	Project Number:	658-13-120	<div>OFFICE OF CONSTRUCTION AND FACILITIES MANAGEMENT</div> <div><div>Department of Veterans Affairs</div></div>		
			<div>CLARK♦NEXSEN</div> <div>440 MARTIN LUTHER KING, JR. BLVD</div> <div>MACON, GEORGIA 31201</div> <div>478-743-8415 FAX 478-743-8239</div> <div>WWW.CLARKNEXSEN.COM</div>						Building Number:	17			
									Location:	SALEM, VA		Drawing Number:	E104
									Approved: Project Director			Date:	03-18-2015

PANEL MDP SCHEDULE

- ① EXISTING PUMP HOUSE (BLDG 23) FEEDER SHALL BE REUSED. EXTEND CONDUIT AND WIRE TO NEW PANEL MDP.
- ② EXISTING BUILDING 18 FEEDER SHALL BE REUSED. EXTEND CONDUIT AND WIRE TO NEW PANEL MDP.
- ③ EXISTING BUILDING 19 FEEDER SHALL BE REUSED. EXTEND CONDUIT AND WIRE TO NEW PANEL MDP.
- ④ EXISTING GUARD SHACK FEEDER SHALL BE REUSED. EXTEND CONDUIT AND WIRE TO NEW PANEL MDP.
- ⑤ EXISTING BUILDING 25 FEEDER SHALL BE REUSED. EXTEND CONDUIT AND WIRE TO NEW PANEL MDP.
- ⑥ EXISTING POOL PUMPS FEEDER SHALL BE REUSED. EXTEND CONDUIT AND WIRE TO NEW PANEL MDP.
- ⑦ EXISTING VA SIGN FEEDER SHALL BE REUSED. EXTEND CONDUIT AND WIRE TO NEW PANEL MDP.

PANEL 1 SCHEDULE

PANEL 2 SCHEDULE

PANEL 3 SCHEDULE

PANEL 4 SCHEDULE

LIGHTING FIXTURE SCHEDULE

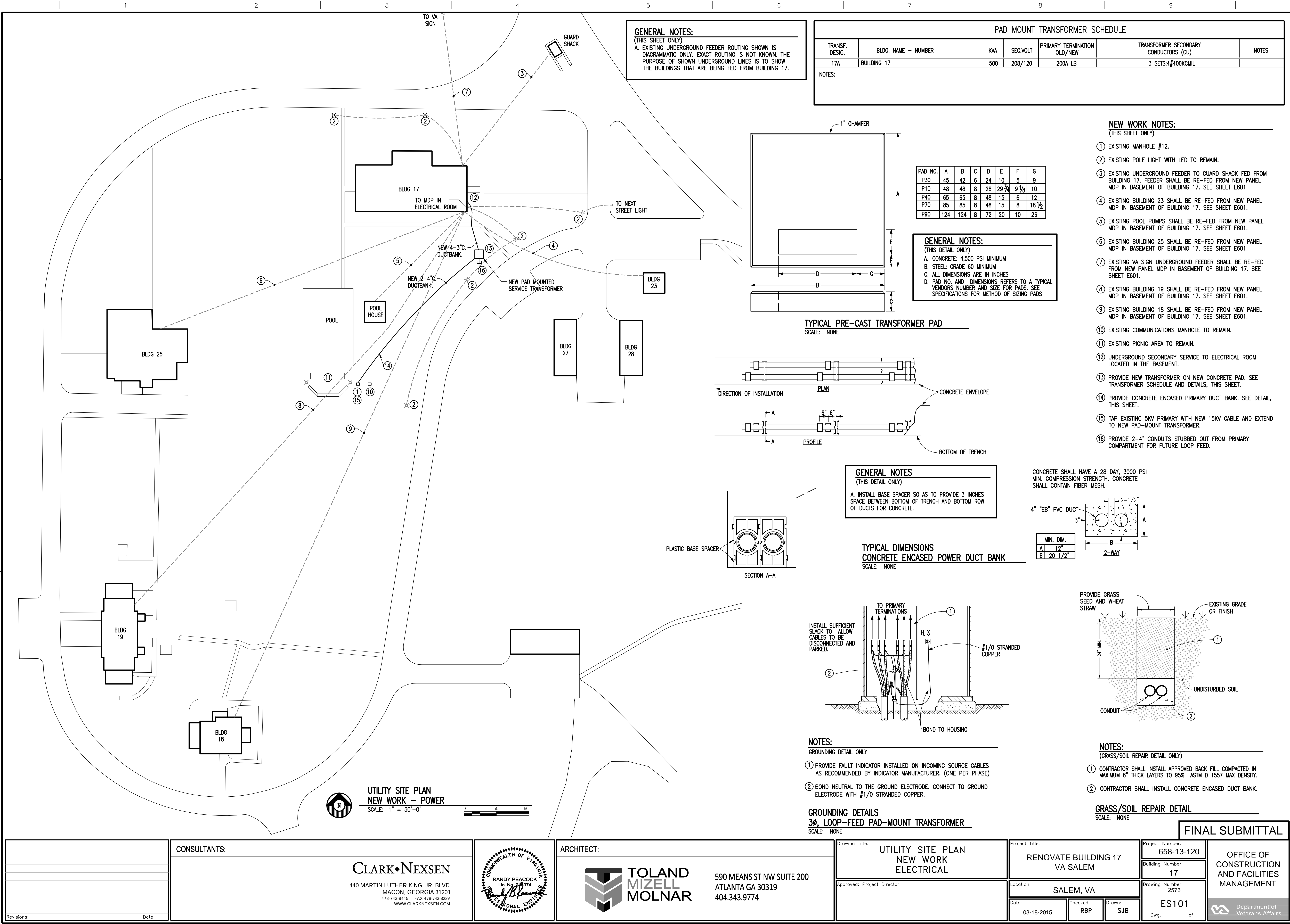
1. FOR DRYWALL CEILING APPLICATION ADD OPTION "DGA".
2. FOR EMERGENCY FIXTURES ADD OPTION "EB14".
3. LIGHTING CONTROL IS AS MANUFACTURED BY REDWOOD SYSTEMS AND WILL CONSISTS OF THE DIRECTOR, ENGINES, SENSORS, LED GATEWAY, SENSOR POD, UNIVERSAL GATEWAY, RELAYS, AND SCENE CONTROL WALL SWITCHES.
4. EXTERIOR LIGHTING WILL BE CONTROLLED BY PHOTOCELL, RELAYS, AND REDWOOD UNIVERSAL GATEWAY.

SUBMIT A COMPLETE SYSTEM SHOP DRAWING AS SPECIFIED INCLUDING EQUIPMENT CUT SHEETS, CALCULATIONS, WIRING DIAGRAMS AS NECESSARY TO FULLY DESCRIBE THE SYSTEM INSTALLATION AND OPERATION.

SUBMIT A COMPLETE SYSTEM SHOP DRAWING AS SPECIFIED INCLUDING EQUIPMENT CUT SHEETS, CALCULATIONS, WIRING DIAGRAMS AS NECESSARY TO FULLY DESCRIBE THE SYSTEM INSTALLATION AND OPERATION.

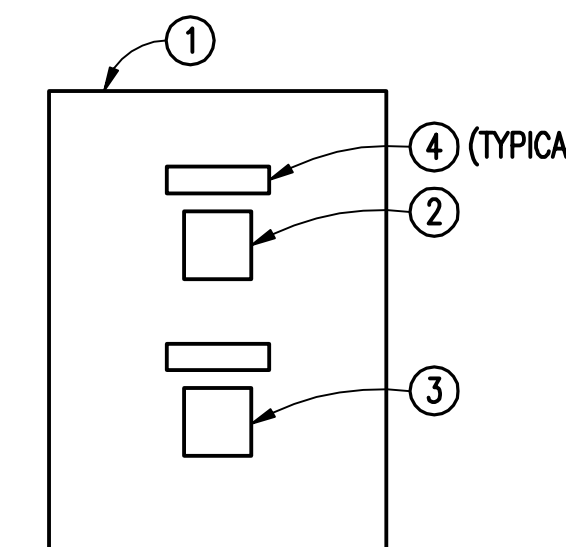
FINAL SUBMITTAL

Drawing File: H:\2014\5350-Renovate Building 17 VAMC Salem, VA\Drawings\5350 ES101.dwg
Plotted By: Jlgilard
Date: Mar 17, 2015 - 4:51pm



GENERAL NOTES:
(THIS SHEET ONLY)
A. ALL NEW DATA/TELEPHONE OUTLETS AND CABLE SHALL BE CAT 6.

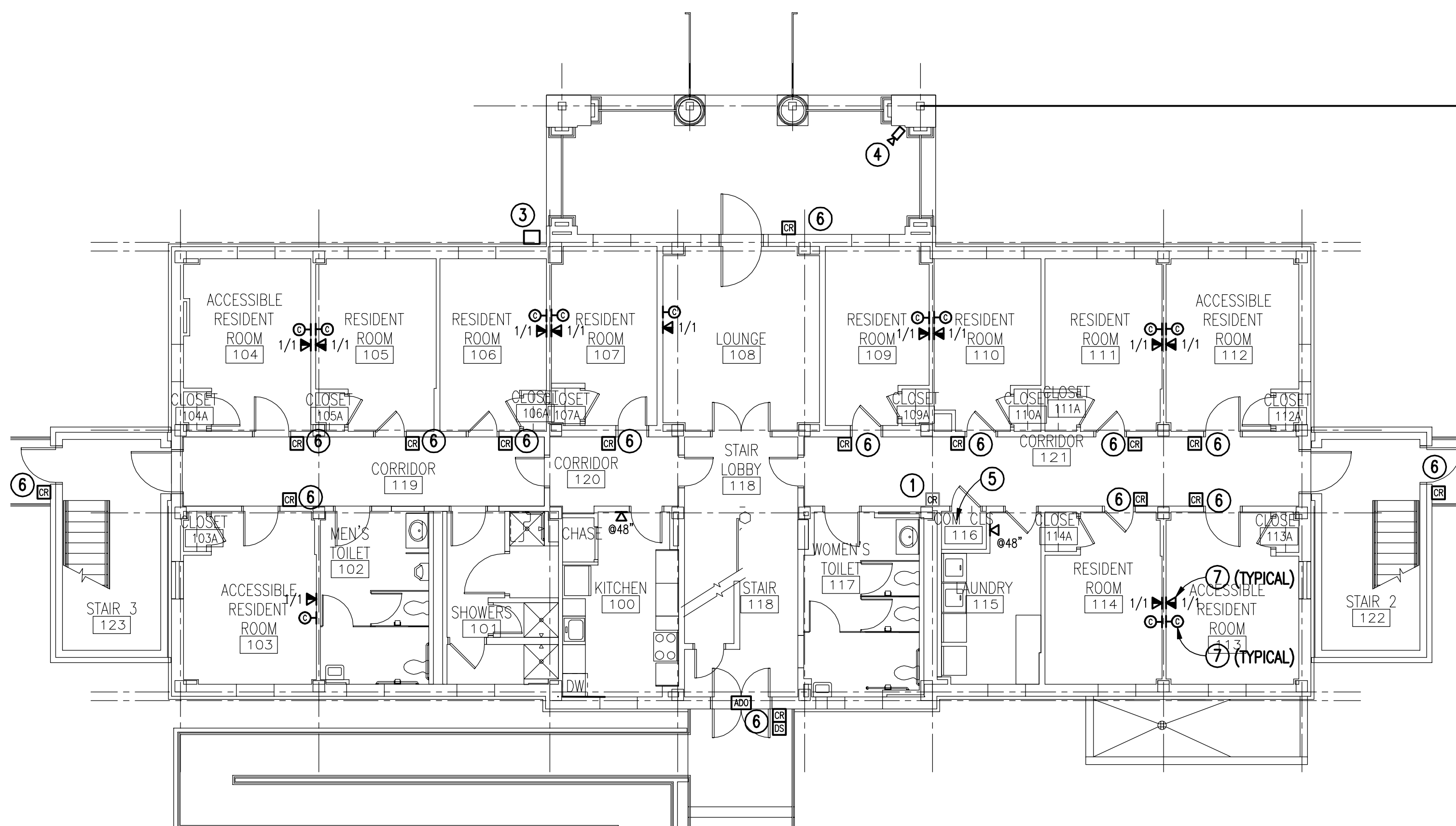
- NOTES:
(THIS SHEET ONLY)
- EXISTING CARD READER/KEYPAD AT TELCOM CLOSET TO REMAIN.
 - EXISTING CCTV TO REMAIN.
 - EXISTING CABLE SERVICE. REROUTE AND CONCEAL EXISTING CABLE.
 - PROVIDE NEW CCTV CAMERA AND CONNECT TO EXISTING SYSTEM.
 - EXISTING LENSEL ACCESS CONTROL PANEL, FIBER AND PATCH PANEL TO REMAIN. PROVIDE 48 PORT PATCH PANEL.
 - PROVIDE CARD READER TO MATCH EXISTING AND CONNECT TO EXISTING LENSEL SYSTEM IN ROOM #116.
 - MOUNTING HEIGHT SHALL BE 18" ABOVE FINISHED FLOOR UNLESS OTHERWISE NOTED. COORDINATE FINAL LOCATION WITH THE EQUIPMENT.
 - PROVIDE 4'x8' BACKBOARD FOR MOUNTING CATV EQUIPMENT. REFER TO RISER, THIS SHEET.
 - ROUTE INCOMING CATV SERVICE ALONG BASEMENT TO NEW BACKBOARD IN ELECTRICAL ROOM.
 - EXISTING CATV SERVICE CABLE SHALL BE REMOVED ONCE NEW SERVICE CABLE IS INSTALLED AND OPERATIONAL.
 - 24"W X 24"D SWING RACK, 20RN (35"H).
 - REDWOOD P.O.E. LIGHTING DRIVERS. SEE LIGHTING SHEET.



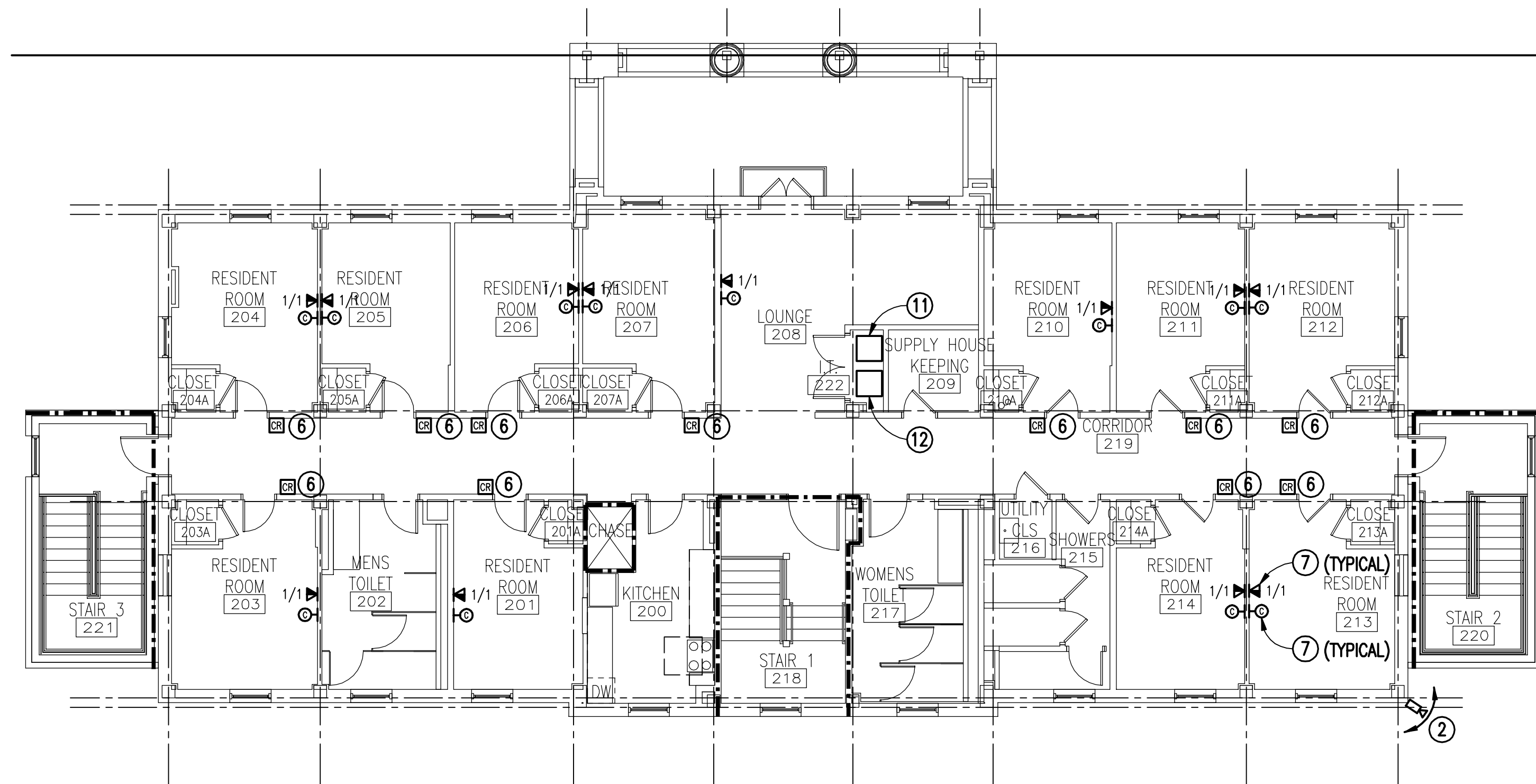
VOICE/DATA OUTLET
SCALE: NONE

- NOTES:
(FOR VOICE/DATA OUTLET DETAIL ONLY)
- SINGLE GANG COVERPLATE.
 - WHITE CAT 6 JACK FOR VOICE.
 - BLUE CAT 6 FOR DATA.
 - IDENTIFICATION.

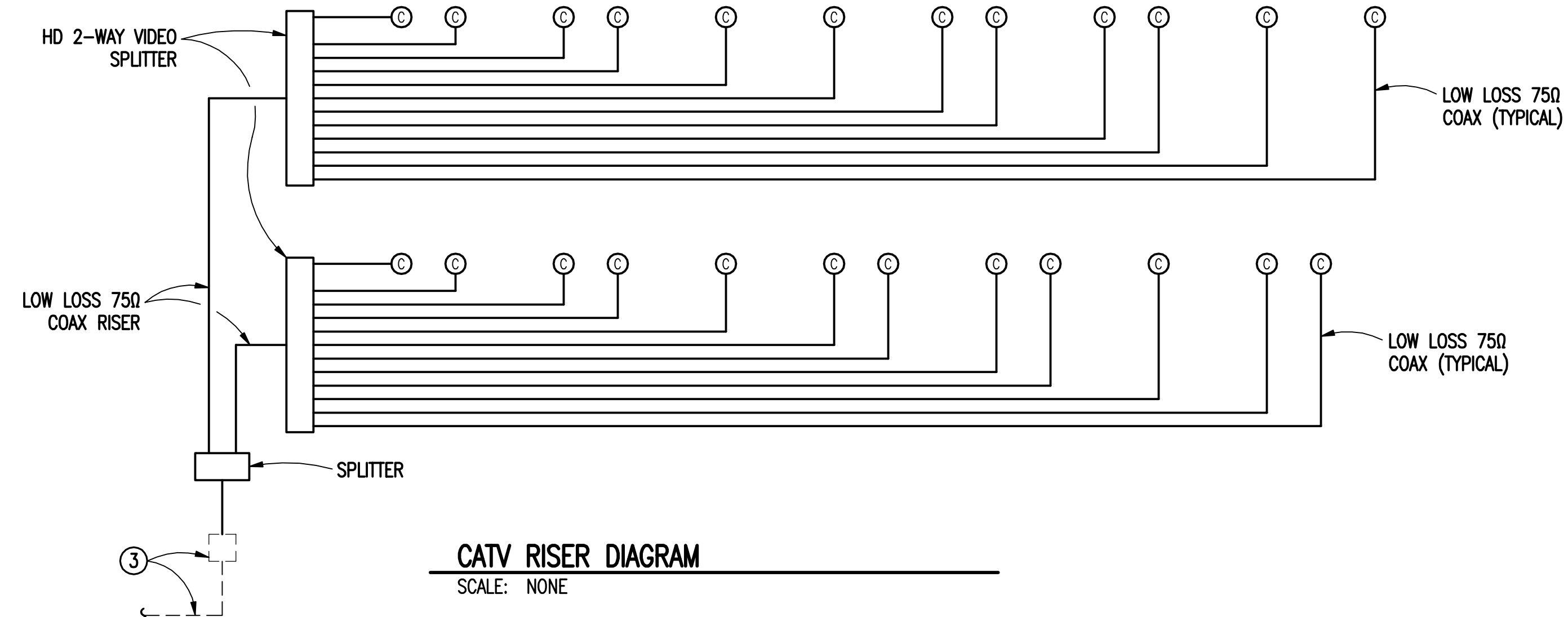
- NOTES:
(TELECOMMUNICATIONS RISER DIAGRAM ONLY)
- EXISTING TELEPHONE ENTRANCE EQUIPMENT TO REMAIN.
 - EXISTING TELEPHONE 66 BLOCK TO REMAIN.
 - PROVIDE CAT 6 WHITE CABLE FROM VOICE DATA OUTLET IN 3/4"C TO ROOM 116. TERMINATE AT EXISTING 66 BLOCK.
 - PROVIDE CAT 6 BLUE CABLE FROM DATA OUTLET IN 3/4"C TO PATCH PANEL IN IT CLOSET 222.
 - FIBER OPTIC PATCH CORD AND SWITCH BY THE VA.



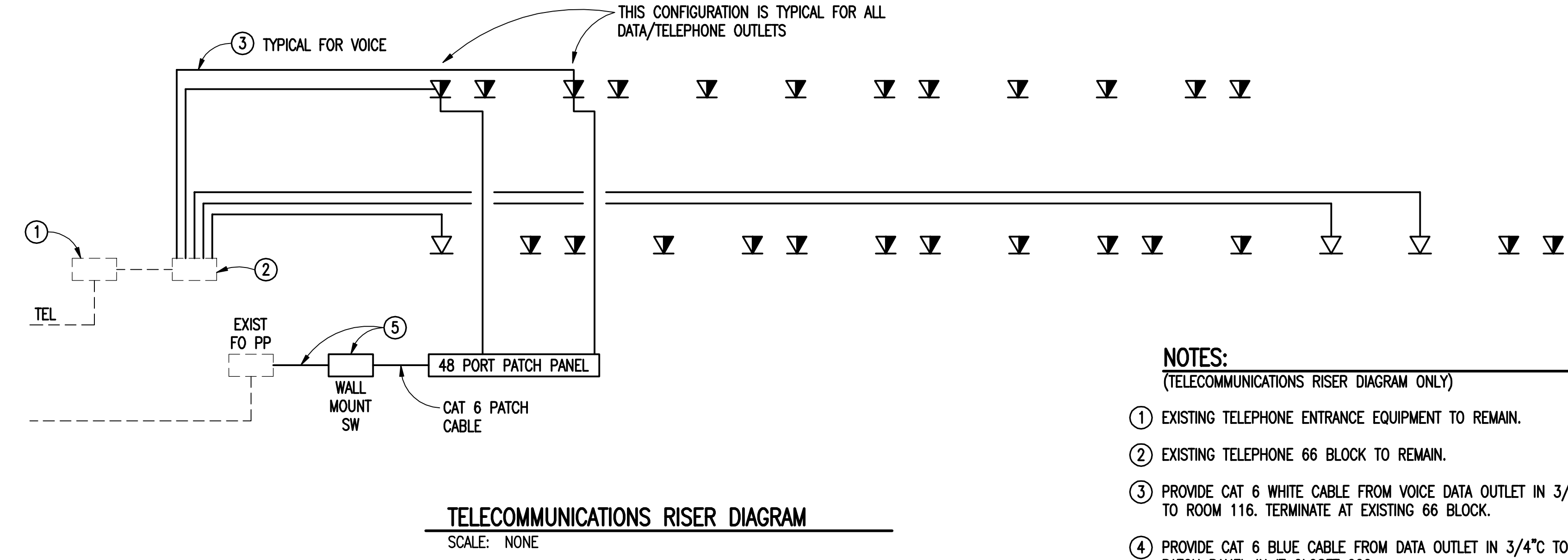
FIRST FLOOR
NEW WORK PLAN - SPECIAL SYSTEMS
SCALE: 1/8" = 1'-0"



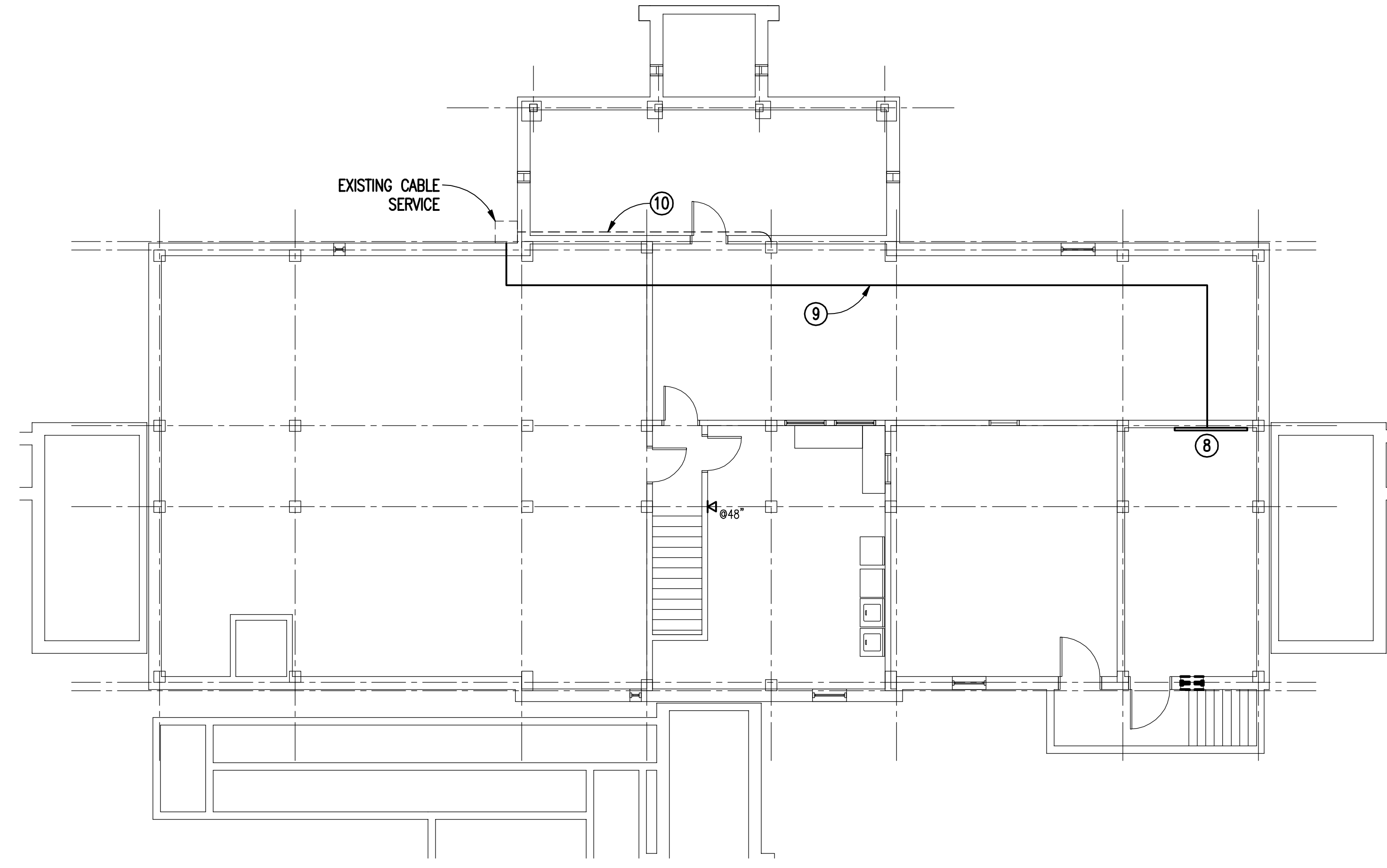
SECOND FLOOR
NEW WORK PLAN - SPECIAL SYSTEMS
SCALE: 1/8" = 1'-0"



CATV RISER DIAGRAM
SCALE: NONE



TELECOMMUNICATIONS RISER DIAGRAM
SCALE: NONE



BASEMENT
NEW WORK PLAN - SPECIAL SYSTEMS
SCALE: 1/8" = 1'-0"

Drawing File: H:\2014\3350-Renovate Building 17 VAMC Salem, VA\Drawings\3350 ET101-FA101.dwg
Plotted by: tallent
Plotted Date: Mar 17, 2015 - 5:18pm
one eighth inch = one foot
one quarter inch = one foot
three eighths inch = one foot
one half inch = one foot
three quarters inch = one foot
one inch = one foot
one and one half inches = one foot
two inches = one foot
three inches = one foot
four inches = one foot
six inches = one foot
eight inches = one foot
ten inches = one foot
twelve inches = one foot

Revisions:		Date:		CONSULTANTS:		ARCHITECT:		Drawing Title:		Project Title:		Project Number:		Office of Construction and Facilities Management	
				CLARK•NEXSEN		TOLAND MIZELL MOLNAR		NEW WORK PLANS SPECIAL SYSTEMS ELECTRICAL		RENOVATE BUILDING 17 VA SALEM		658-13-120		OFFICE OF CONSTRUCTION AND FACILITIES MANAGEMENT	
				440 MARTIN LUTHER KING, JR. BLVD MACON, GEORGIA 31201 478-743-8415 FAX 478-743-8239 WWW.CLARKNEXSEN.COM		590 MEANS ST NW SUITE 200 ATLANTA GA 30319 404.343.9774		Approved: Project Director		Location: SALEM, VA		Building Number: 17		Department of Veterans Affairs	
				RANDY PEACOCK Lic. No. 009974 Professional Engineer						Date: 03-18-2015		Checked: RBP		Drawn: SJB	
												Drawing Number: 2573		Dwg. of	
												ET101			