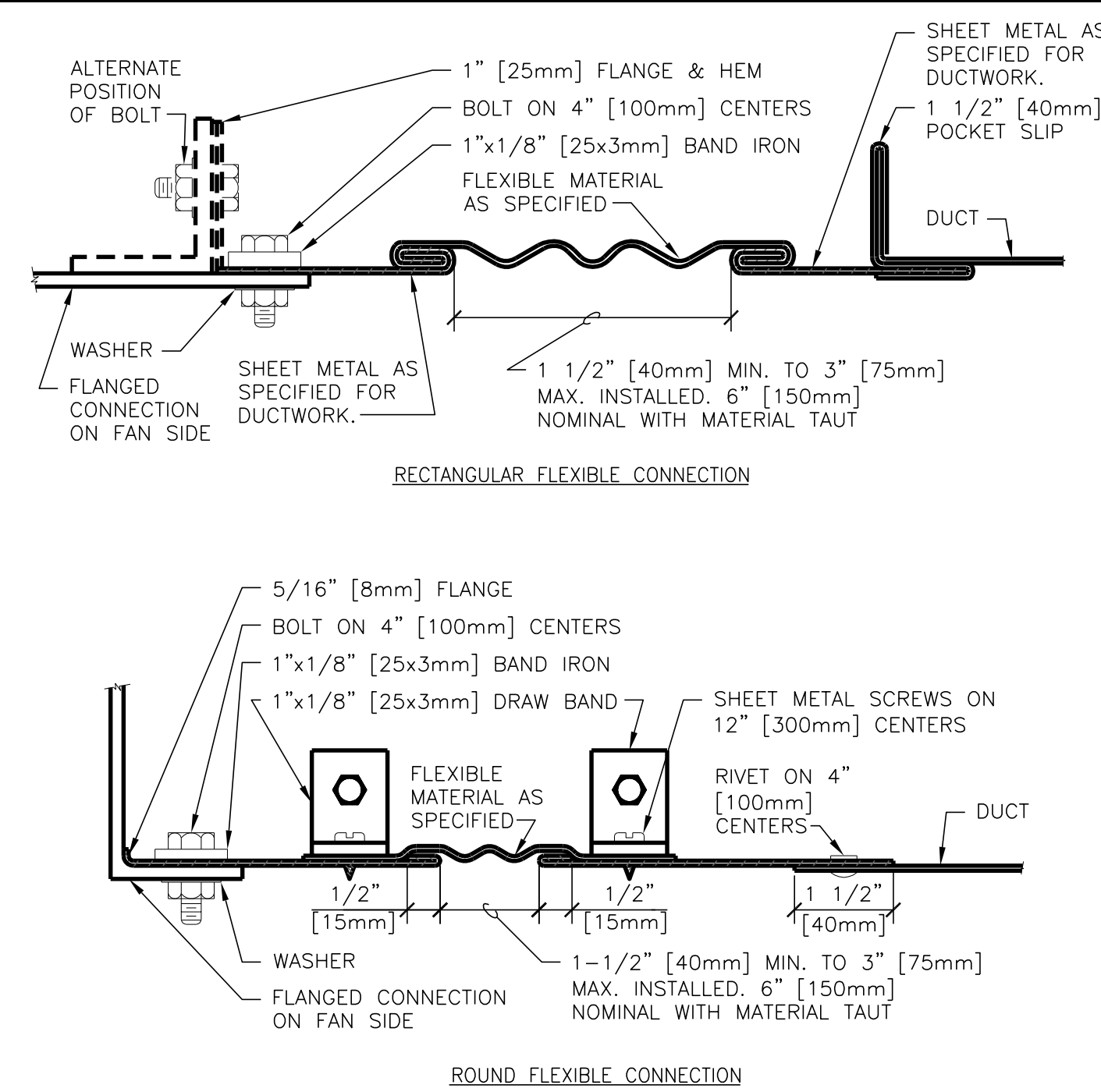


## 7 SUPPLY DUCTWORK TAKE-OFFS

NTS DESIGNER'S NOTES:

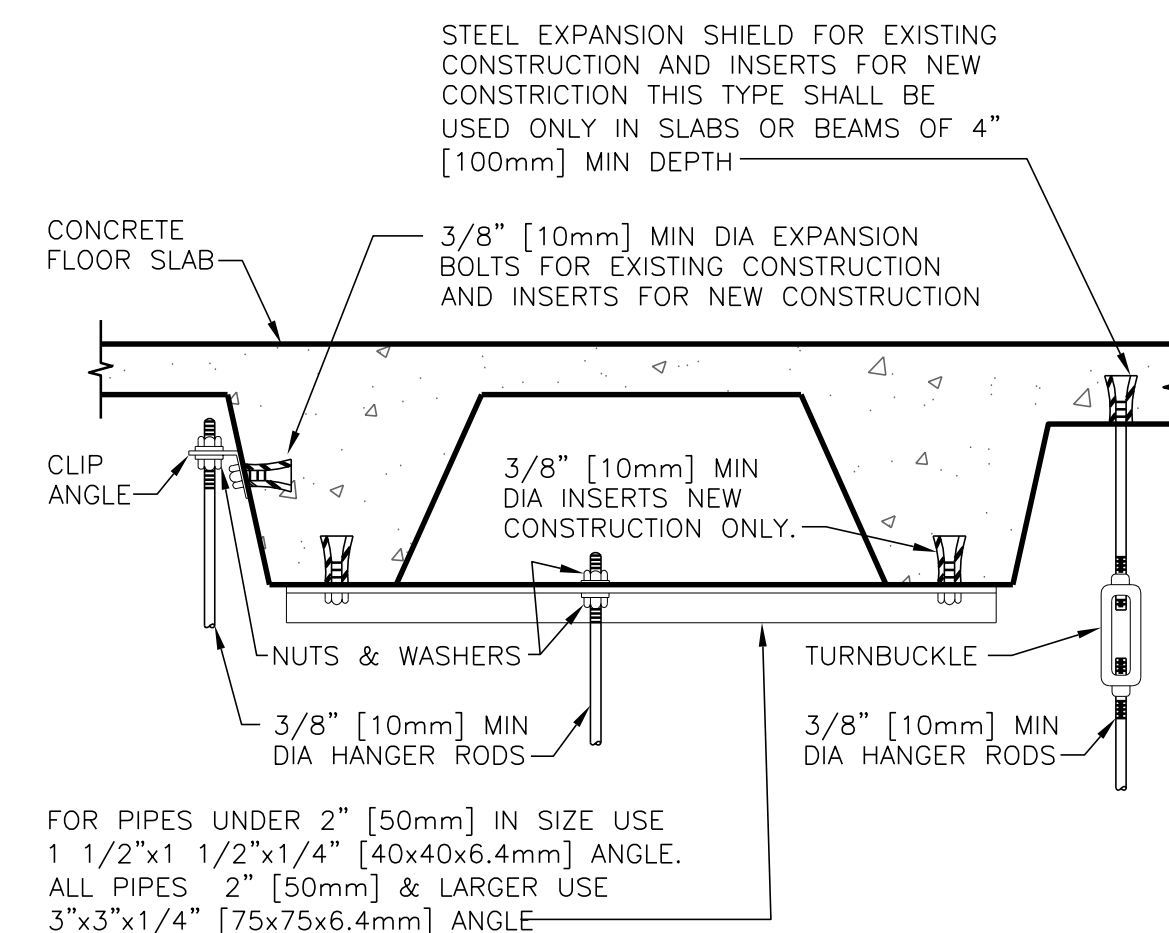
1. THE SUPPLY REGISTER TAKE-OFF MAY BE USED FOR UP TO 25% OF THE MAIN DUCT CFM. THE BRANCH DUCT TAKE-OFF MAY BE USED FOR UP TO 15% OF THE MAIN DUCT CFM ANYTIME AND UP TO 40% WHEN THE MAIN DUCT VELOCITY IS 1000 FPM [5.1 M/S] OR LESS. THE AIR SPLIT DUCT TAKE-OFF SHALL BE USED IN ALL OTHER CASES AND MAY BE USED AT ANYTIME.
2. SHOW ALL VOLUME DAMPERS ON FLOOR PLANS.

2. SHOW ALL VOLUME DAMPERS ON FLOOR PLANS.

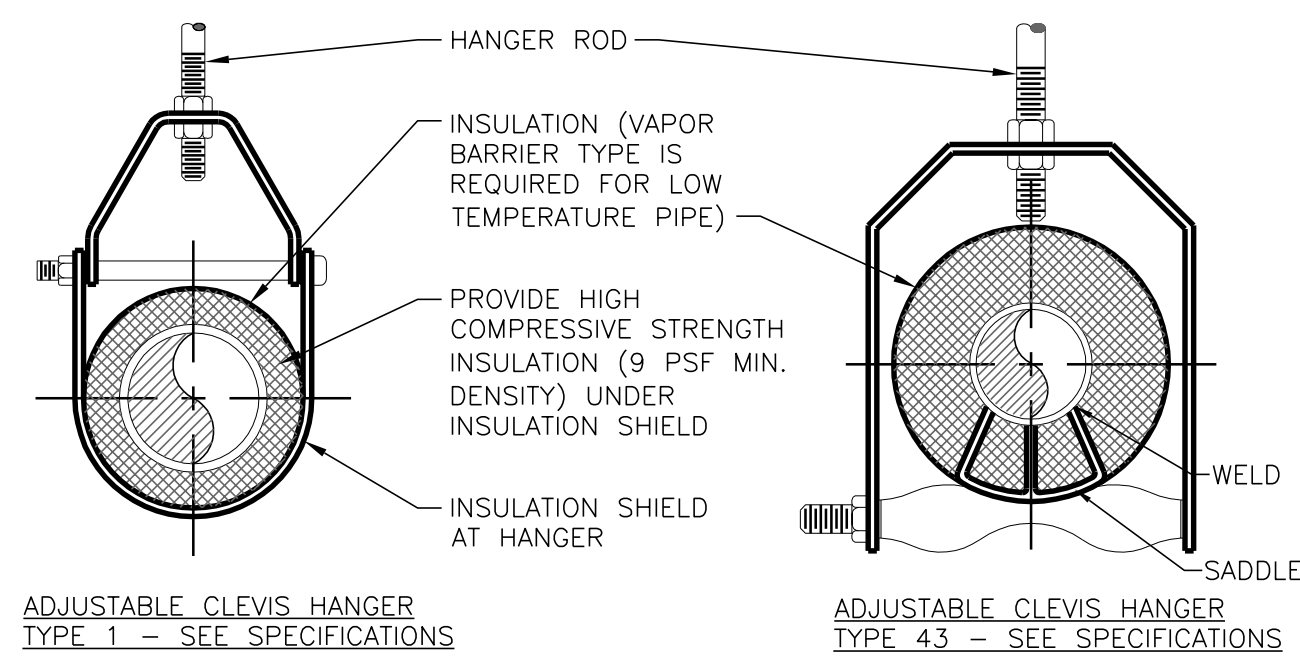


## 4 FLEXIBLE DUCT CONNECTIONS

NTS



## 1 SECURING HANGER RODS IN CONCRETE



NOTES:  
SEE SPECIFIER FOR DETAILED  
HANGER REQUIREMENTS

MAX.  
mm

CHANNEL OR 2"x2"x1/4"  
[50x50x6.4mm] ANGLE

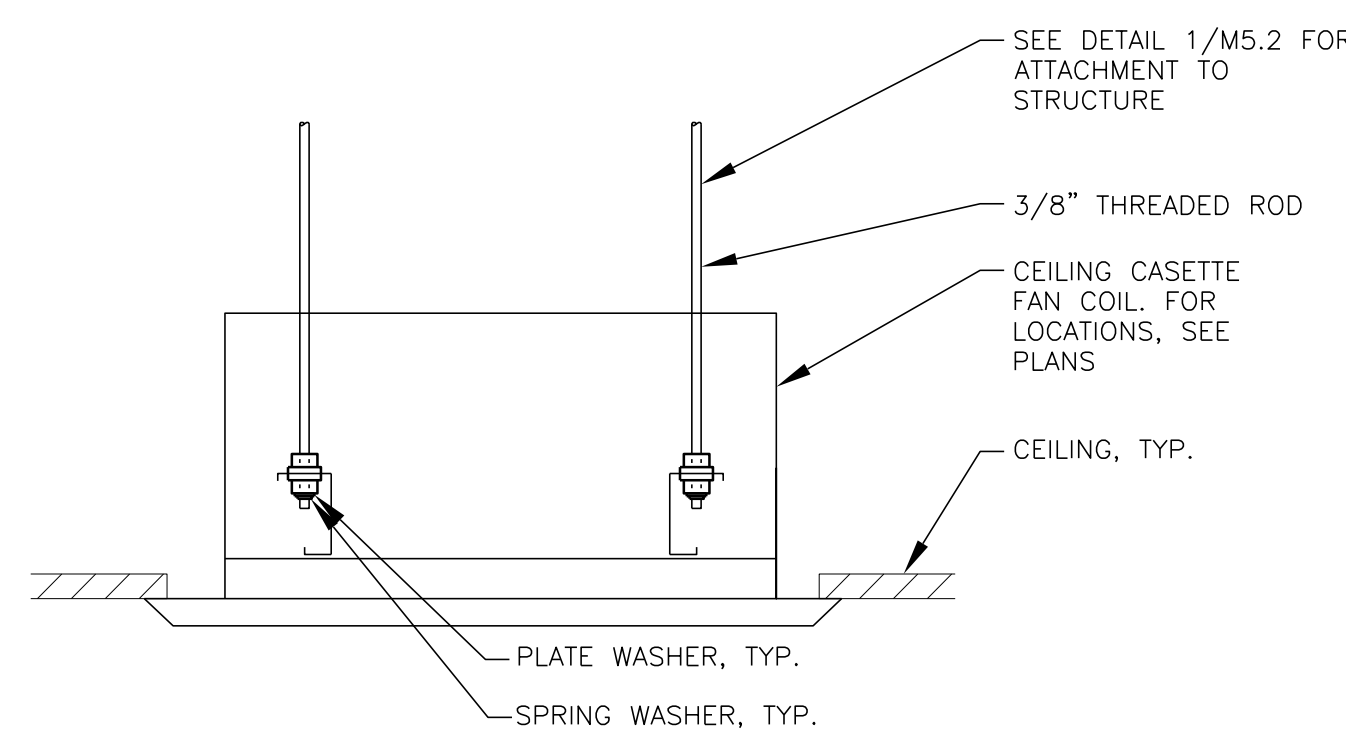
SIDE VIEW TRAPEZE HANGER FOR UP TO  
1000 LB. [453KG] UNIFORM LOAD

MAXIMUM PIPE/TUBING SUPPORT SPACING																						
NOM.	SIZE	IN. [mm]	THRU [in]	3/4 [25]	1 [25]	1 1/4 [32]	1 1/2 [40]	2 [50]	2 1/2 [63]	3 [75]	4 [100]	5 [125]	6 [150]	8 [200]	10 [250]	12 [300]	14 [350]	16 [400]	18 [450]	20 [500]	24 [600]	
PIPE	FT. [m]	2	12	10	2100	2700	3300	3400	3700	4100	4400	4900	5200	5800	6700	7600	8200	8500	9100	9600	10000	
TUBING	FT. [m]	5	1500	6	1800	7	2100	8	2400	9	2700	10	3000	12	3600	14	4200	16	4800	18	5400	24
NOTE: FOR TRAPEZE HANGER TAKE SPACING OF SMALLEST SIZE ON TRAPEZE.																						

NOTE: FOR TRAPEZE HANGER TAKE SPACING OF SMALLEST SIZE ON TRAPEZE

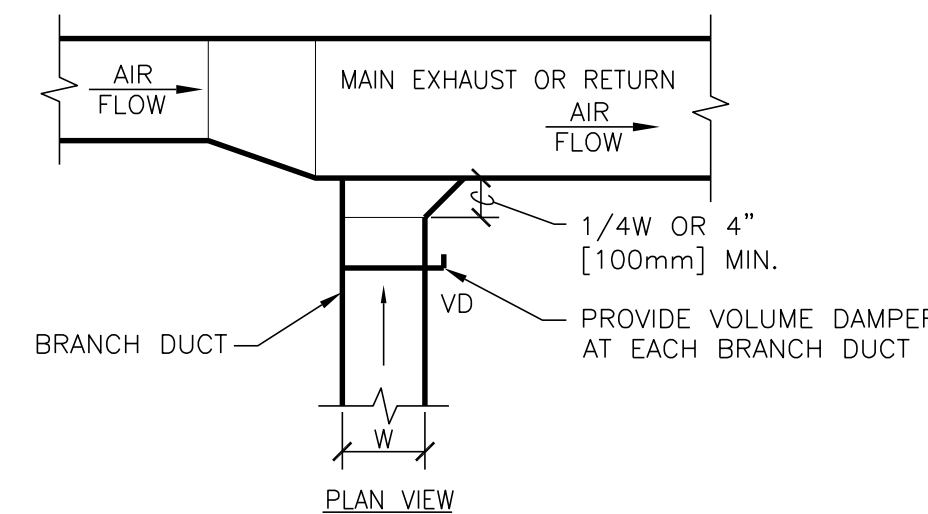
## 5 ROUND DUCT HANGERS

NTS



## 6 HANGING FAN COIL SUPPORT

NTS



2 EXHAUST OR RETURN BRANCH DUCTWORK

NTS

[illegible]