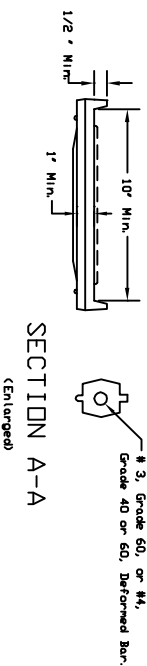
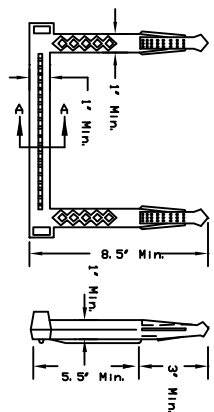


PLAN SECTION C-C  
GRAY IRON STEP



REINFORCED PLASTIC AND REINFORCED CORROSION-RESISTANT RUBBER MANHOLE STEPS

# NOTES

Lettering on covers shall denote STORM SEWER or SANITARY SEWER as applicable.  
Bottom ribs may be deleted from cover castings.  
The 1/8" raised lugs are a skid resistant measure. Alternative measures will require approval by the Engineer.  
Shop Drawings shall be submitted if details and dimensions vary.

WEST VIRGINIA DEPARTMENT OF TRANSPORTATION  
DIVISION OF HIGHWAYS  
STANDARD SHEET DR7-X

REVISED 7-1-88	MANHOLE CASTINGS
EXTENDED LIFE	
STANDARD SHEET DR7-X	