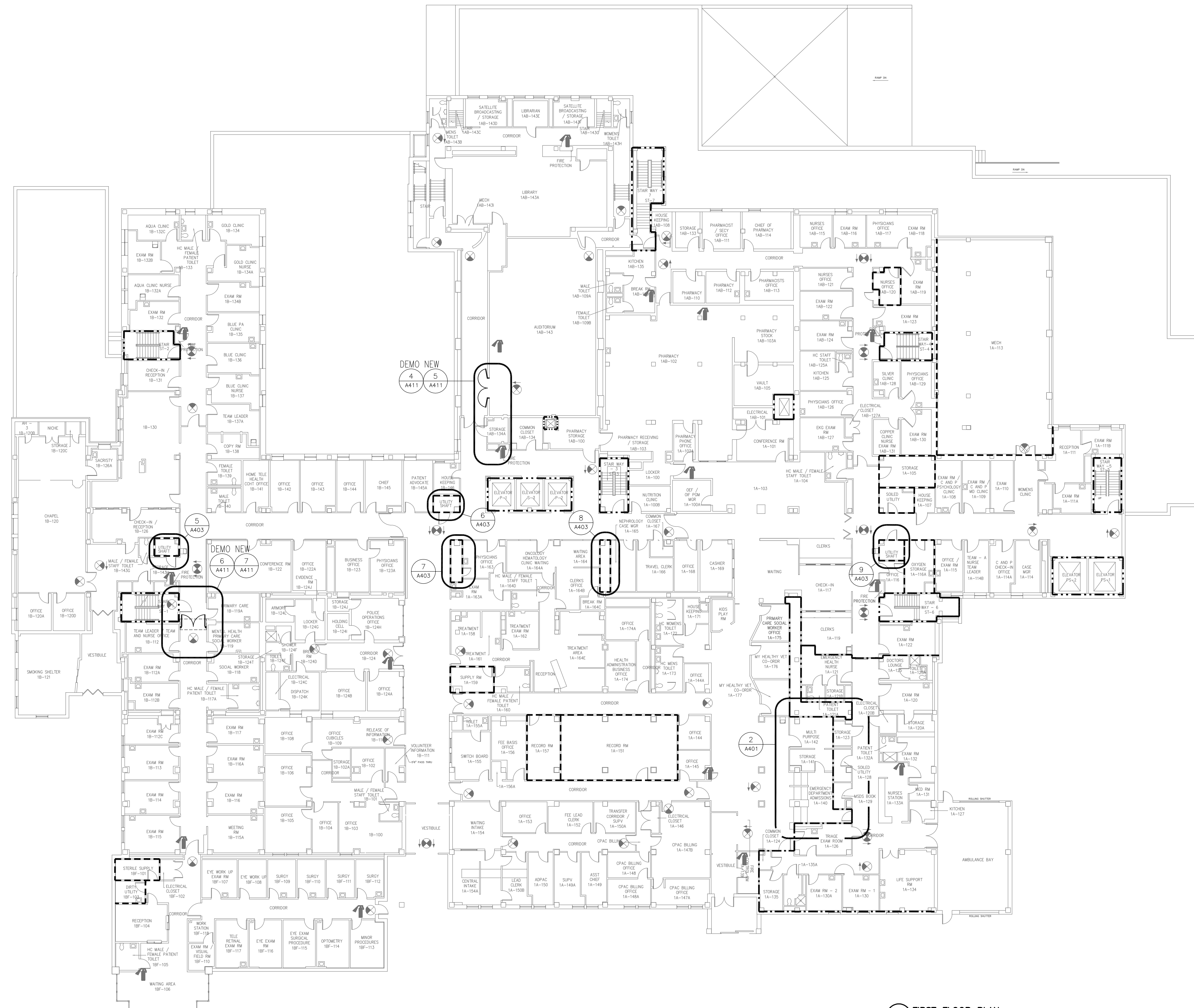


A three inches = one foot  
B one and one-half inches = one foot  
C one inch = one foot  
D three-quarters inch = one foot  
E one-half inch = one foot  
F three-eighths inch = one foot  
G one-quarter inch = one foot  
H one-eighth inch = one foot



- FLOOR PLAN LEGEND**
- EXISTING CONSTRUCTION TO REMAIN
  - NEW CONSTRUCTION
  - 1-HOUR FIRE WALL
  - 2-HOUR FIRE WALL
  - 1-HOUR FIRE/SMOKE WALL
  - 2-HOUR FIRE/SMOKE WALL
  - 30-MINUTE SMOKE BARRIER
  - SMOKE RESISTIVE HAZARDOUS AREA
  - EXISTING EXIT SIGN
  - EXISTING FIRE EXTINGUISHER
  - PLAN NORTH
  - TRUE NORTH

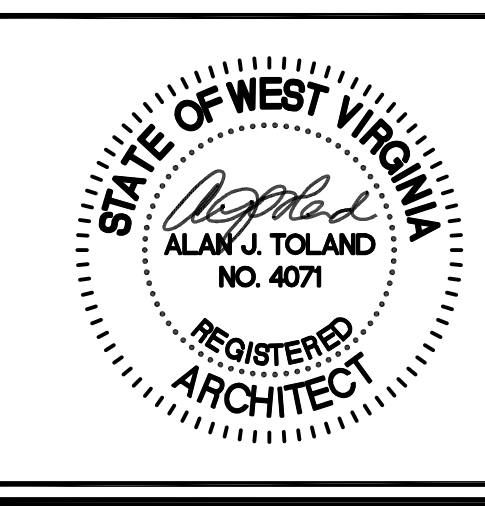
THE WORK ON THIS SHEET WILL BE CONSIDERED AS "PHASE THREE."

1 FIRST FLOOR PLAN  
A101 1/16" = 1'-0"

Revisions	Date



CORPORATE OFFICE  
590 Means St. NW, Ste. 200  
Atlanta, GA 30318  
404.214.9774



Drawing Title <b>FIRST FLOOR PLAN</b>	Project Title <b>CORRECT LIFE SAFETY DEFICIENCIES BECKLEY VAMC FINAL SUBMITTAL</b>	Date 09-5-2014
Approved Project Engineer	Building Number - Checked DM Drawn CC	Project No. 517-14-106
	Location ----	DRAWING NO. <b>A101</b> Dwg. XX Of XX

Veterans Administration