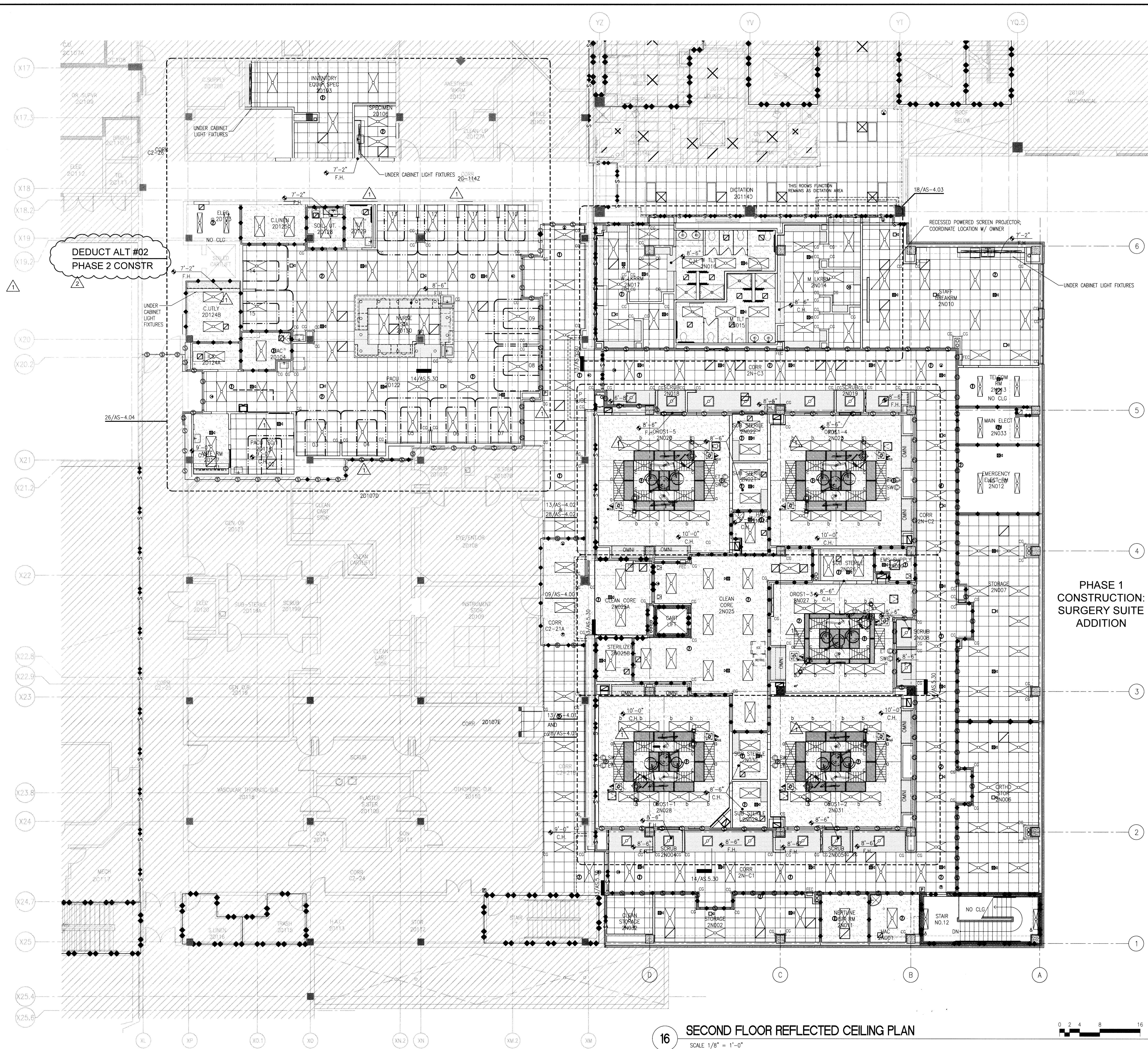


three inches = one foot
one and one-half inches = one foot
one inch = one foot
three-quarters inch = one foot
one-half inch = one foot
three-eighths inch = one foot
one-quarter inch = one foot



1. CEILING HEIGHT ARE TYPICALLY AT 9'-0" AFF U.O.N.
2. NOTE: COORDINATE HEIGHT OF GYP BD FURDOWN ABOVE OMNICELL CABINETS IN OR'S W/ EQUIP MANUFACTURER.
3. COORDINATE FURDOWN HEIGHT ABOVE METAL LOCKERS W/ LOCKER MANUFACTURER.
- 05 GENERAL NOTES**
N.T.S.

- OVERHEAD PAGING SPEAKERS
- FH FUR DOWN HEIGHT
- CH CEILING HEIGHT
- MANUAL PULL STATION
- RECESSED CAN LIGHT FIXTURE
- NURSE CALL CORRIDOR DOME LIGHT
- EXIT LIGHT
- SMOKE DETECTOR
- SPEAKER
- SPEAKER W/STROBE
- FLUORESCENT 2X2 LIGHT FIXTURE
- FLUORESCENT 1X4 LIGHT FIXTURE
- FLUORESCENT 2X4 LIGHT FIXTURE
- EMERGENCY FLUORESCENT LIGHT FIXTURE
- UNDER-CABINET LIGHT W/ SWITCH AT WALL
- OR SUPPLY AIR DIFFUSER
- CEILING ACCESS PANEL COORD LOCATION W/ MECH.
- EXHAUST AIR GRILLE
- RETURN AIR DIFFUSER
- SUPPLY AIR DIFFUSER
- SUSP CLG GRID & TILE
- GYP BD FURDOWN
- GYP BD CEILING
- V V ITEM - VA SUPPLIED & INSTALLED
- VC ITEM - VA SUPPLIED & CONTRACTOR INSTALLED
- CC ITEM - CONTRACTOR SUPPLIED & INSTALLED
- 1HR FIRE RATED SMOKE PARTITION
- NON-RATED SMOKE PARTITION
- 1HR FIRE RESISTIVE RATED LINE
- 2HR FIRE RESISTIVE RATED LINE
- 1HR FIRE RATED SMOKE BARRIER LINE
- 2HR FIRE RATED SMOKE BARRIER LINE
- EXIST AREA NOT IN CONTRACT

02 LEGEND
N.T.S.

KEY PLAN

16 SECOND FLOOR REFLECTED CEILING PLAN
SCALE: 1/8" = 1'-0"

CD FINAL SUBMISSION REVIEW 11-25-14	CONSULTANTS :	ARCHITECT / ENGINEERS : WILSON ARCHITECTURAL GROUP 5051 WESTHEIMER SUITE 200 HOUSTON, TEXAS 77056 TELEPHONE (713) 621-8714 BURNS DeLATTI AND McCOY, INC. MEP ENGINEERS PINNACLE STRUCTURAL STRUCTURAL ENGINEERS BREWER AND ESCALANTE CIVIL ENGINEERS PROTECTION DEVELOPMENT INC. FIRE PROTECTION ENGINEERS		Drawing Title: SECOND FLOOR REFLECTED CEILING PLAN Scale: 1/8" = 1'-0" Approved Project Director:	AMENDMENT NO. 02 Project Title: BLDG 163 SURGERY SUITE ADDITION Bldg No.: 163 Checked: Drawn: Location: TEMPLE, TEXAS	FULLY SPRINKLERED Date: 12-15-14 Project No.: 674-277 Drawing No.: AS-142 Dwg. Of
CD FINAL SUBMISSION 12-15-14				Project Title: BLDG 163 SURGERY SUITE ADDITION	Date: 12-15-14	
AMENDMENT NO. 01 09-30-15				Project No.: 674-277	Date: 12-15-14	
AMENDMENT NO. 02 10-07-15						

PC PATH: N:\3303
REVISED: 30'x42"
SHEET SIZE: 30'x42"
one-eighth inch = one foot

VA FORM 08-6231A, MAR 1984

U.S. GOVERNMENT PRINTING OFFICE: 1984-440-467