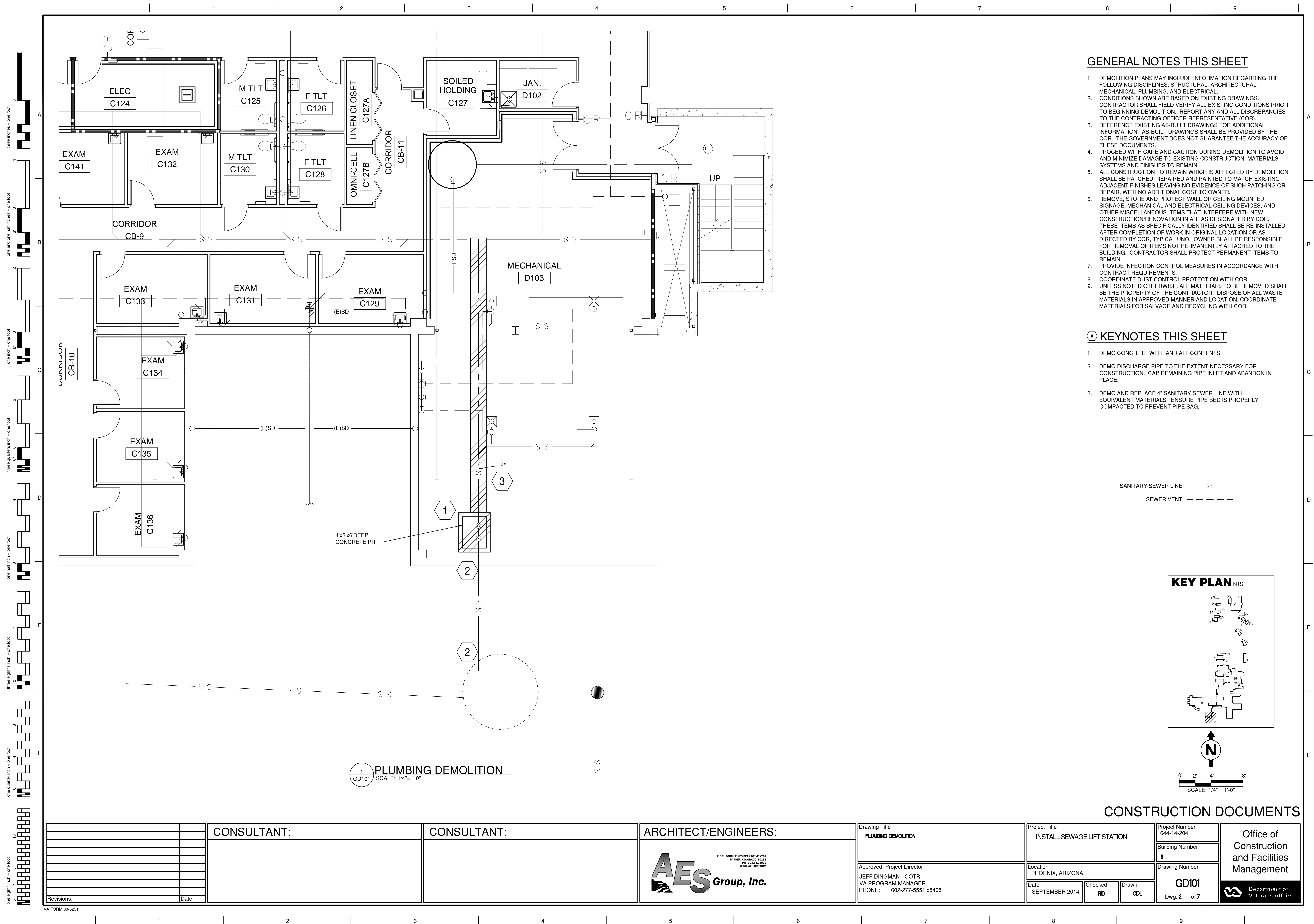


PHOENIX VAMC
DEPARTMENT OF VETERANS AFFAIRS
650 EAST INDIAN SCHOOL ROAD
PHOENIX, AZ 85012

SHEET INDEX	
SHEET NUMBER	SHEET NAME
GI001	COVER SHEET AND SHEET INDEX
GD101	PLUMBING DEMOLITION
CU501	CIVIL DETAILS
PL101	PLUMBING SANITARY WASTE
PL102	PLUMBING DETAILS
ES100	ELEC ROOM ROUTING - SITE PLAN
EP100	POWER PLAN



		CONSULTANT:	CONSULTANT:	ARCHITECT/ENGINEERS:	Drawing Title COVER SHEET AND SHEET INDEX	Project Title INSTALL SEWAGE LIFT STATION	Project Number 644-14-204	Office of Construction and Facilities Management	
							Building Number 8		
							Drawing Number G1001		
							Dwg. 1 of 7		
								Department of Veterans Affairs	
Revisions:	Date				Approved: Project Director JEFF DINGMAN - COTR VA PROGRAM MANAGER PHONE: 602-277-5551 x5405	Location PHOENIX, ARIZONA	Drawing Number G1001	Department of Veterans Affairs	
						Date SEPTEMBER 2014	Checked 		Department of Veterans Affairs
							Drawn CDL		



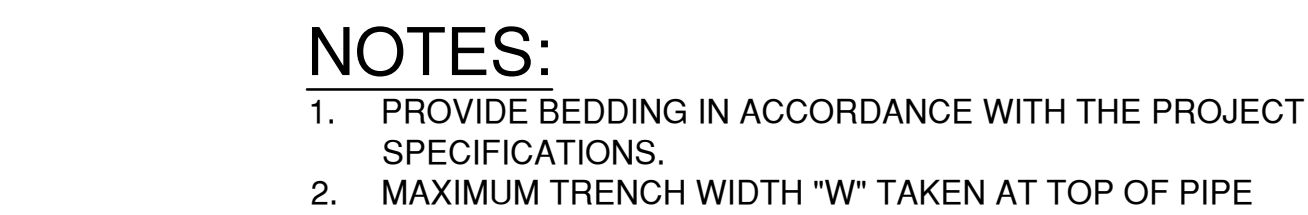


Diagram illustrating a sanitary wye connection. The main components labeled are:

- COUNTERSUNK THREADED PLUG
- FINISH GRADE
- 2'-0" SQ x 4" THICK CONCRETE PAD
- 6 1/8" BEND
- 6" PIPE
- SANITARY WYE
- GRAVITY SEWER

WYE OR TEE

"TAP" SADDLE

10 O'CLOCK

2 O'CLOCK

30" MIN.

30" MIN.

SECTION A-A



NOTE: TAPS IN STAGGERED CONFIGURATION AT 10 O'CLOCK AND 2 O'CLOCK.

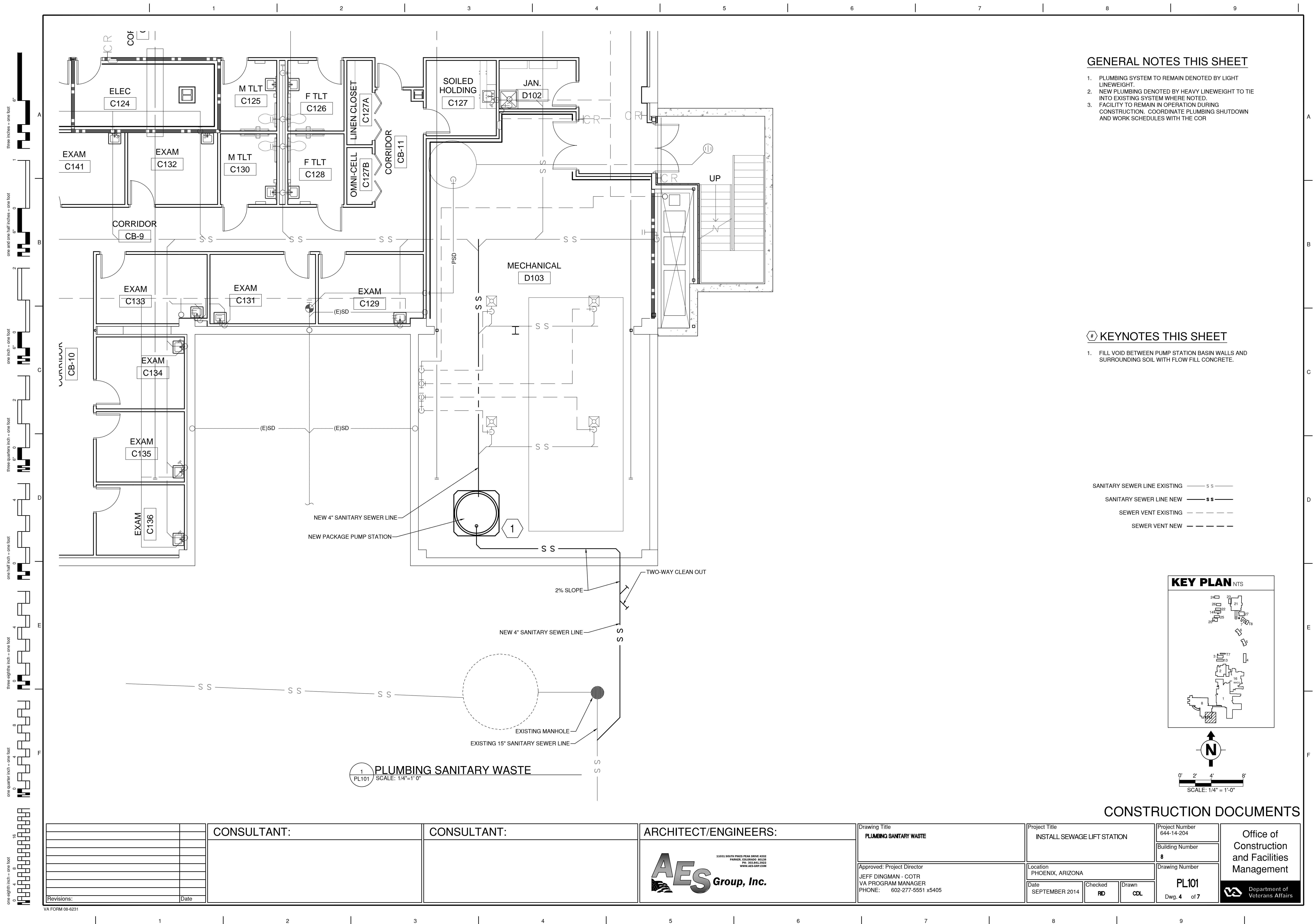
SEWER

1. SEWER SERVICE CONNECTIONS SHALL BE POSITIONED AT EITHER THE 2 O'CLOCK OR THE 10 O'CLOCK POSITION ON THE CIRCUMFERENCE OF THE SEWER MAIN.
2. ON NEW INSTALLATIONS, EITHER WYE OR TEE FITTINGS SHALL BE USED. WHEN TAPPING INTO AN EXISTING SEWER MAIN, A SADDLE CONNECTION AND APPROVED CORING METHOD SHALL BE USED.
3. THE MINIMUM DISTANCE BETWEEN SERVICE CONNECTIONS MADE ALONG THE PIPE SHALL BE 3- FEET. THE MINIMUM DISTANCE FROM EITHER THE BELL OR SPIGOT END OF A PIPE SHALL BE 3- FEET. THE MINIMUM DISTANCE FROM THE CENTER OF A MANHOLE TO A SERVICE CONNECTION SHALL BE EITHER 5- FEET OR THE TRANSITION POINT FROM THE TROUGH, WHICHEVER IS GREATER.
4. A MAXIMUM OF 4 SEWER SERVICE CONNECTIONS SHALL BE ALLOWED PER 20- FEET LENGTH OF PIPE. A SPECIFIC SOILS INVESTIGATIONS SHOULD BE CONDUCTED TO ASSURE THAT THE EXTERNAL LOADING WILL BE WITHIN ALLOWABLE LIMITS REGARDLESS OF THE NUMBER OF TAPS INVOLVED.
5. WITH AWWA C-900 CLASS 200 PIPE USE AWWA C-900 CLASS 150 TEES FOR SERVICES.

3
CU501

SANITARY SEWER TAP
SCALE:NTS

		CONSULTANT:	CONSULTANT:	ARCHITECT/ENGINEERS:	<div> <div> Drawing Title CIVIL DETAILS </div> <div> Approved: Project Director JEFF DINGMAN - COTR VA PROGRAM MANAGER PHONE: 602-277-5551 x5405 </div> </div>	<div> <div> Project Title INSTALL SEWAGE LIFT STATION </div> <div> Location PHOENIX, ARIZONA </div> <div> Date SEPTEMBER 2014 </div> </div> <div> <div> Checked RD </div> <div> Drawn CDL </div> </div>	<div> Project Number 644-14-204 </div> <div> Building Number 8 </div> <div> Drawing Number CU501 </div> <div> Dwg. 3 of 7 </div>	<div> Office of Construction and Facilities Management </div> <div>  Department of Veterans Affairs </div>	
				<div>  <div> 11031 SOUTH PIKES PEAK DRIVE #202 PARKER, COLORADO 80138 PH: 303.843.3932 WWW.AES-GRP.COM </div> </div>					
Revisions:	Date								



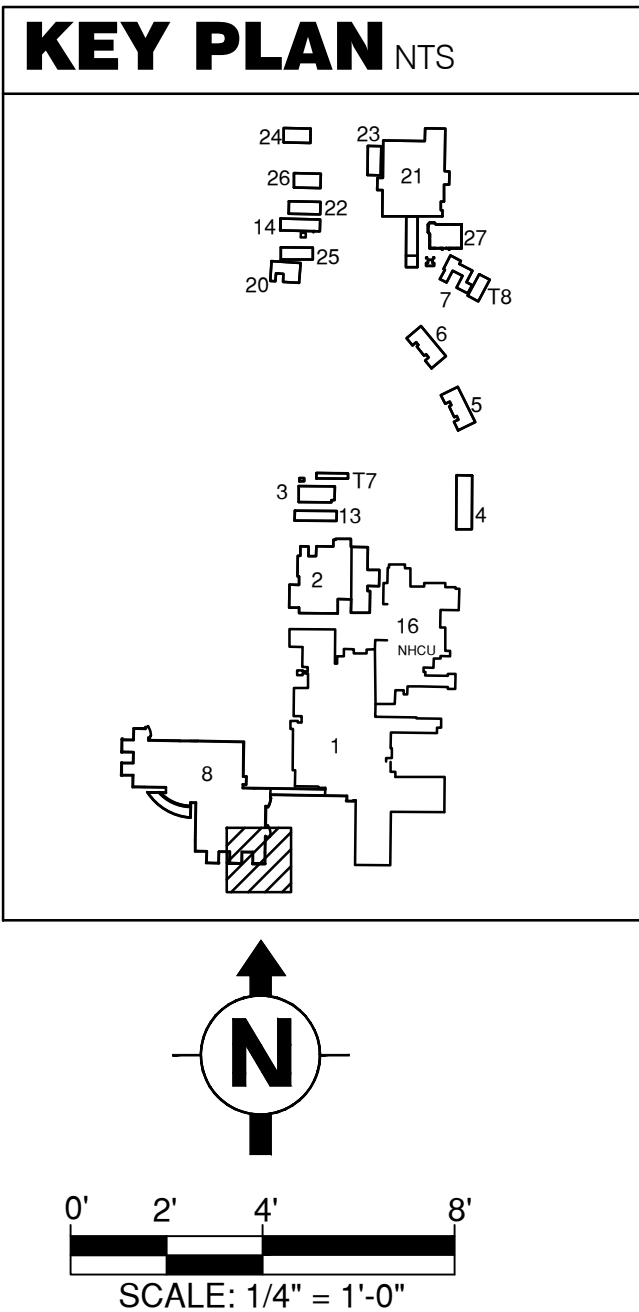
GENERAL NOTES THIS SHEET

- 1. PLUMBING SYSTEM TO REMAIN DENOTED BY LIGHT LINEWEIGHT.
- 2. NEW PLUMBING DENOTED BY HEAVY LINEWEIGHT TO TIE INTO EXISTING SYSTEM WHERE NOTED.
- 3. FACILITY TO REMAIN IN OPERATION DURING CONSTRUCTION. COORDINATE PLUMBING SHUTDOWN AND WORK SCHEDULES WITH THE COR

KEYNOTES THIS SHEET

- 1. FILL VOID BETWEEN PUMP STATION BASIN WALLS AND SURROUNDING SOIL WITH FLOW FILL CONCRETE.

- SANITARY SEWER LINE EXISTING — S S —
- SANITARY SEWER LINE NEW — SS —
- SEWER VENT EXISTING - - - - -
- SEWER VENT NEW - - - - -



CONSTRUCTION DOCUMENTS

--	--	--	--	--	--	--	--	--	--	--	--	--	--	--	--	--	--	--	--	--	--	--	--	--	--	--	--	--	--	--	--	--	--	--	--	--	--	--	--	--	--	--	--	--	--	--	--	--	--	--	--	--	--	--	--	--	--	--	--	--	--	--	--	--	--	--	--	--	--	--	--	--	--	--	--	--	--	--	--	--	--	--	--	--	--	--	--	--	--	--	--	--	--	--	--	--	--	--	--	--	--	--	--	--	--	--	--	--	--	--	--	--	--	--	--	--	--	--	--	--	--	--	--	--	--	--	--	--	--	--	--	--	--	--	--	--	--	--	--	--	--	--	--	--	--	--	--	--	--	--	--	--	--	--	--	--	--	--	--	--	--	--	--	--	--	--	--	--	--	--	--	--	--	--	--	--	--	--	--	--	--	--	--	--	--	--	--	--	--	--	--	--	--	--	--	--	--	--	--	--	--	--	--	--	--	--	--	--	--	--	--	--	--	--	--	--	--	--	--	--	--	--	--	--	--	--	--	--	--	--	--	--	--	--	--	--	--	--	--	--	--	--	--	--	--	--	--	--	--	--	--	--	--	--	--	--	--	--	--	--	--	--	--	--	--	--	--	--	--	--	--	--	--	--	--	--	--	--	--	--	--	--	--	--	--	--	--	--	--	--	--	--	--	--	--	--	--	--	--	--	--	--	--	--	--	--	--	--	--	--	--	--	--	--	--	--	--	--	--	--	--	--	--	--	--	--	--	--	--	--	--	--	--	--	--	--	--	--	--	--	--	--	--	--	--	--	--	--	--	--	--	--	--	--	--	--	--	--	--	--	--	--	--	--	--	--	--	--	--	--	--	--	--	--	--	--	--	--	--	--	--	--	--	--	--	--	--	--	--	--	--	--	--	--	--	--	--	--	--	--	--	--	--	--	--	--	--	--	--	--	--	--	--	--	--	--	--	--	--	--	--	--	--	--	--	--	--	--	--	--	--	--	--	--	--	--	--	--	--	--	--	--	--	--	--	--	--	--	--	--	--	--	--	--	--	--	--	--	--	--	--	--	--	--	--	--	--	--	--	--	--	--	--	--	--	--	--	--	--	--	--	--	--	--	--	--	--	--	--	--	--	--	--	--	--	--	--	--	--	--	--	--	--	--	--	--	--	--	--	--	--	--	--	--	--	--	--	--	--	--	--	--	--	--	--	--	--	--	--	--	--	--	--	--	--	--	--	--	--	--	--	--	--	--	--	--	--	--	--	--	--	--	--	--	--	--	--	--	--	--	--	--	--	--	--	--	--	--	--	--	--	--	--	--	--	--	--	--	--	--	--	--	--	--	--	--	--	--	--	--	--	--	--	--	--	--	--	--	--	--	--	--	--	--	--	--	--	--	--	--	--	--	--	--	--	--	--	--	--	--	--	--	--	--	--	--	--	--	--	--	--	--	--	--	--	--	--	--	--	--	--	--	--	--	--	--	--	--	--	--	--	--	--	--	--	--	--	--	--	--	--	--	--	--	--	--	--	--	--	--	--	--	--	--	--	--	--	--	--	--	--	--	--	--	--	--	--	--	--	--	--	--	--	--	--	--	--	--	--	--	--	--	--	--	--	--	--	--	--	--	--	--	--	--	--	--	--	--	--	--	--	--	--	--	--	--	--	--	--	--	--	--	--	--	--	--	--	--	--	--	--	--	--	--	--	--	--	--	--	--	--	--	--	--	--	--	--	--	--	--	--	--	--	--	--	--	--	--	--	--	--	--	--	--	--	--	--	--	--	--	--	--	--	--	--	--	--	--	--	--	--	--	--	--	--	--	--	--	--	--	--	--	--	--	--	--	--	--	--	--	--	--	--	--	--	--	--	--	--	--	--	--	--	--	--	--	--	--	--	--	--	--	--	--	--	--	--	--	--	--	--	--	--	--	--	--	--	--	--	--	--	--	--	--	--	--	--	--	--	--	--	--	--	--	--	--	--	--	--	--	--	--	--	--	--	--	--	--	--	--	--	--	--	--	--	--	--	--	--	--	--	--	--	--	--	--	--	--	--	--	--	--	--	--	--	--	--	--	--	--	--	--	--	--	--	--	--	--	--	--	--	--	--	--	--	--	--	--	--	--	--	--	--	--	--	--	--	--	--	--	--	--	--	--	--	--	--	--	--	--	--	--	--	--	--	--	--	--	--	--	--	--	--	--	--	--	--	--	--	--	--	--	--	--	--	--	--	--	--	--	--	--	--	--	--	--	--	--	--	--	--	--	--	--	--	--	--	--	--	--	--	--	--	--	--	--	--	--	--	--	--	--	--	--	--	--	--	--	--	--	--	--	--	--	--	--	--	--	--	--	--	--	--	--	--	--	--	--	--	--	--	--	--	--	--	--	--	--	--	--	--	--	--	--	--	--	--	--	--	--	--	--	--	--	--	--	--	--	--	--	--	--	--	--	--	--	--	--	--	--	--	--	--	--	--	--	--	--	--	--	--	--	--	--	--	--	--	--	--	--	--	--	--	--	--	--	--	--	--	--	--	--	--	--	--	--	--	--	--	--	--	--	--	--	--	--	--	--	--	--	--	--	--	--	--	--	--	--	--	--	--	--	--	--	--	--	--	--	--	--	--	--	--	--	--	--	--	--	--	--	--	--	--	--	--	--	--	--	--	--	--	--	--	--	--	--	--	--	--	--	--	--	--	--	--	--	--	--	--	--	--	--	--	--	--	--	--	--	--	--	--	--	--	--	--	--	--	--	--	--	--	--	--	--	--	--	--	--	--	--	--	--	--	--	--	--	--	--	--	--	--	--	--	--	--	--	--	--	--	--	--	--	--	--	--	--	--	--	--	--	--	--	--	--	--	--	--	--	--	--	--	--	--	--	--	--	--	--	--	--	--	--	--	--	--	--	--	--	--	--	--	--	--	--	--	--	--	--	--	--	--	--	--	--	--	--	--	--	--	--	--	--	--	--	--	--	--	--	--	--	--	--	--	--	--	--	--	--	--	--	--	--	--	--	--	--	--	--	--	--	--	--	--	--	--	--	--	--	--	--	--	--	--	--	--	--	--	--	--	--	--	--	--	--	--	--	--	--	--	--	--	--	--	--	--	--

Architectural drawing showing a lift station piping flow diagram. The diagram includes a basement ceiling elevation of 1120.75, a basement floor elevation of 1105.75, and a lift station base elevation of 1097.75. A new sanitary sewer line is shown, along with an existing slab and a new package pump station. The piping is labeled with 'NEW SANITARY SEWER LINE', 'ROUTE PIPE AROUND EXISTING MECHANICAL EQUIPMENT', and 'EXISTING MANHOLE'. The diagram also shows a 'NEW PACKAGE PUMP STATION' and a 'NEW SANITARY SEWER' line. The piping is labeled with 'NEW SANITARY SEWER LINE', 'ROUTE PIPE AROUND EXISTING MECHANICAL EQUIPMENT', and 'EXISTING MANHOLE'. The diagram also shows a 'NEW PACKAGE PUMP STATION' and a 'NEW SANITARY SEWER' line.

PUMP SCHEDULE

PUMP STYLE	QTY	TYPE	FLOW	TDH	OUTLET	ELEC	MOTOR	ELEC
SUBMERSIBLE	2	MYERS 4R	50 GPM	20 FT	4" PVC	230/1/60	2 HP	230/1/60

LIFT STATION PIPING FLOW DIAGRAM
1 PL102 / SCALE: NTS

CONSTRUCTION DOCUMENTS

CONSULTANT:		CONSULTANT:		ARCHITECT/ENGINEERS:		Drawing Title		Project Title		Project Number	
						PLUMBING DETAILS		INSTALL SEWAGE LIFT STATION		644-14-204	
										Building Number	
										8	
										Drawing Number	
										PL102	
										Dwg. 5 of 7	
Revisions:		Date				Approved: Project Director		Location		Date	
						JEFF DINGMAN - COTR		PHOENIX, ARIZONA		SEPTEMBER 2014	
						VA PROGRAM MANAGER				Checked	
						PHONE: 602-277-5551 x5405				RD	
										Drawn	
										CDL	

VA FORM 08-6231

Architectural drawing showing a lift station piping flow diagram. The diagram includes a basement floor elevation of 1105.75, a basement ceiling elevation of 1120.75, and an exterior grade elevation of 1115.25. A new sanitary sewer line is shown, along with an existing slab and a new package pump station. The lift station base elevation is 1097.75. The diagram also shows an existing manhole and a new sanitary sewer line. The piping is labeled with 'NEW SANITARY SEWER LINE' and 'ROUTE PIPE AROUND EXISTING MECHANICAL EQUIPMENT'. The diagram includes a pump schedule table and a title block.

PUMP STYLE	QTY	TYPE	FLOW	TDH	OUTLET	ELEC	MOTOR	ELEC
SUBMERSIBLE	2	MYERS 4R	50 GPM	20 FT	4" PVC	230/1/60	2 HP	230/1/60

1 PL102 / SCALE: NTS

2 CU501

CONSTRUCTION DOCUMENTS

CONSULTANT:		CONSULTANT:		ARCHITECT/ENGINEERS:		Drawing Title		Project Title		Project Number	
						PLUMBING DETAILS		INSTALL SEWAGE LIFT STATION		644-14-204	
										Building Number	
										8	
										Drawing Number	
										PL102	
										Dwg. 5 of 7	
Revisions:		Date				Approved: Project Director		Location		Checked	
						JEFF DINGMAN - COTR		PHOENIX, ARIZONA		RD	
						VA PROGRAM MANAGER				CDL	
						PHONE: 602-277-5551 x5405		Date			
								SEPTEMBER 2014			

VA FORM 08-6231

AES Group, Inc.

11001 SOUTH PIKES PEAK DRIVE #202
PARADISE, COLORADO 80130
TEL: 303.843.3922
WWW.AES-GRP.COM

Office of Construction and Facilities Management

Department of Veterans Affairs

Architectural drawing showing a lift station piping flow diagram. The diagram includes a basement ceiling elevation of 1120.75, a basement floor elevation of 1105.75, and a lift station base elevation of 1097.75. It details the installation of a new sanitary sewer line, a new package pump station, and an existing manhole. The piping is labeled with 'NEW SANITARY SEWER LINE', 'ROUTE PIPE AROUND EXISTING MECHANICAL EQUIPMENT', and 'EXISTING MANHOLE'. The exterior grade elevation is 1115.25. The piping is labeled with 'INV. = 1108.62 (S) 15" PIPE' and '2 CU501'.

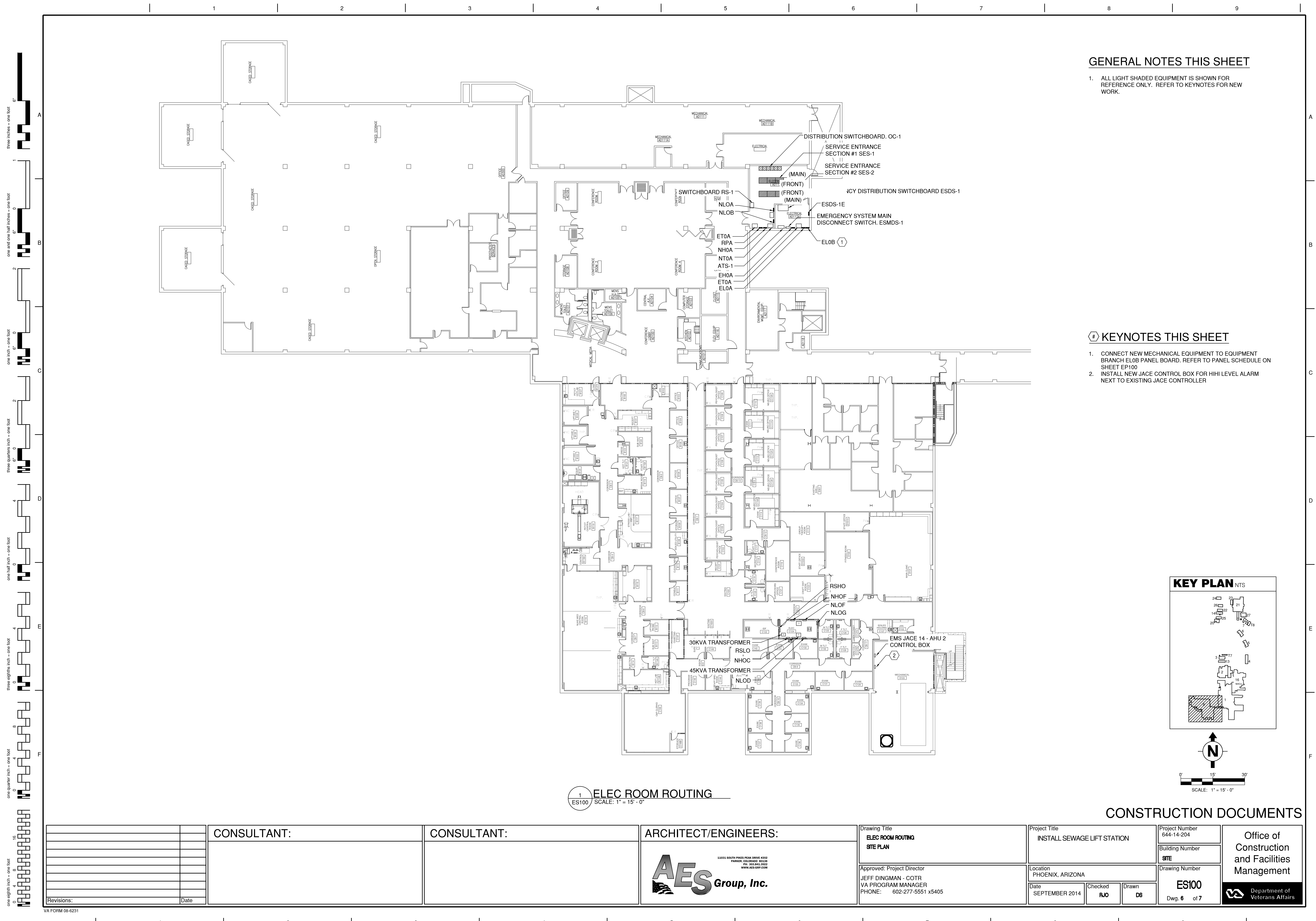
PUMP SCHEDULE

PUMP STYLE	QTY	TYPE	FLOW	TDH	OUTLET	ELEC	MOTOR	ELEC
SUBMERSIBLE	2	MYERS 4R	50 GPM	20 FT	4" PVC	230/1/60	2 HP	230/1/60

LIFT STATION PIPING FLOW DIAGRAM
1 PL102 / SCALE: NTS

CONSTRUCTION DOCUMENTS

CONSULTANT:		CONSULTANT:		ARCHITECT/ENGINEERS:		Drawing Title		Project Title		Project Number	
				AES Group, Inc.		PLUMBING DETAILS		INSTALL SEWAGE LIFT STATION		644-14-204	
										Building Number	
										8	
										Drawing Number	
										PL102	
										Dwg. 5 of 7	
Revisions:		Date				Approved: Project Director JEFF DINGMAN - COTR VA PROGRAM MANAGER PHONE: 602-277-5551 x5405		Location PHOENIX, ARIZONA		Date SEPTEMBER 2014	
								Checked RD		Drawn CDL	

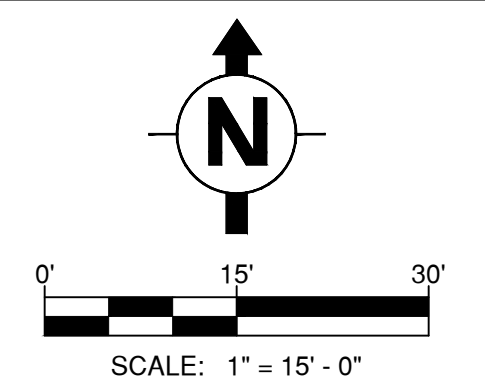
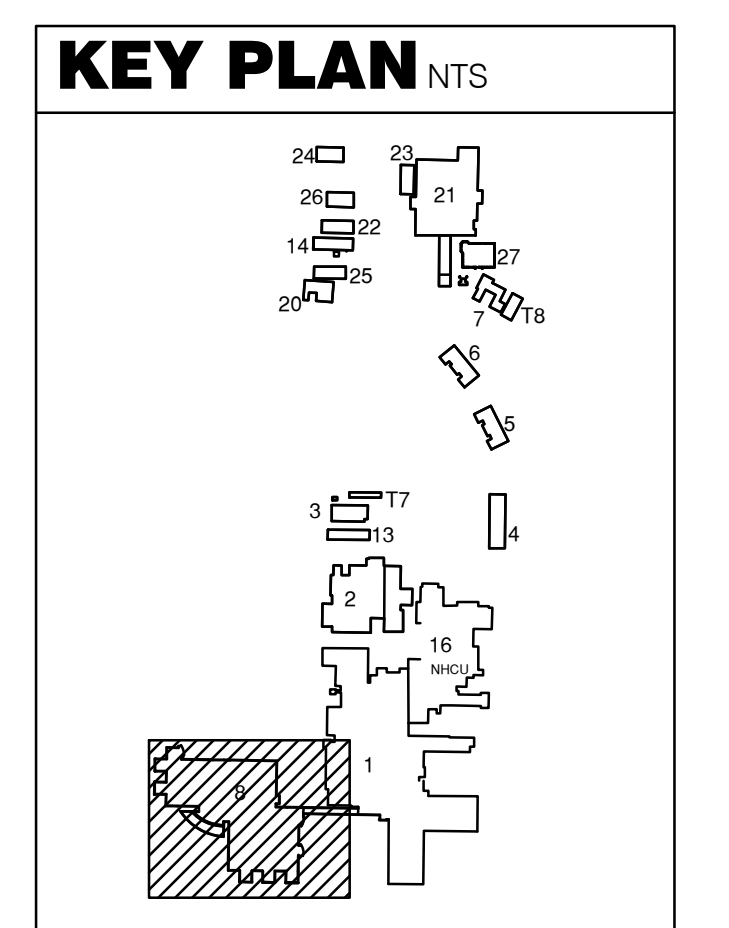


GENERAL NOTES THIS SHEET

- 1. ALL LIGHT SHADED EQUIPMENT IS SHOWN FOR REFERENCE ONLY. REFER TO KEYNOTES FOR NEW WORK.

KEYNOTES THIS SHEET

- 1. CONNECT NEW MECHANICAL EQUIPMENT TO EQUIPMENT BRANCH ELOB PANEL BOARD. REFER TO PANEL SCHEDULE ON SHEET EP100
- 2. INSTALL NEW JACE CONTROL BOX FOR HIHI LEVEL ALARM NEXT TO EXISTING JACE CONTROLLER



1 ELEC ROOM ROUTING
ES100 SCALE: 1" = 15' - 0"

CONSTRUCTION DOCUMENTS

<div>Revisions:</div> <table><tr><td> </td><td> </td></tr><tr><td> </td><td> </td></tr><tr><td> </td><td> </td></tr><tr><td> </td><td> </td></tr><tr><td> </td><td> </td></tr></table>											CONSULTANT:	CONSULTANT:	ARCHITECT/ENGINEERS:	Drawing Title ELEC ROOM ROUTING SITE PLAN	Project Title INSTALL SEWAGE LIFT STATION	Project Number 644-14-204	Office of Construction and Facilities Management
			<div> 11011 SOUTH PINES PEAK DRIVE #202 PARSONS, COLORADO 80469 PH: 303.844.3922 WWW.AES-GRP.COM</div>	Approved: Project Director JEFF DINGMAN - COTR VA PROGRAM MANAGER PHONE: 602-277-5551 x5405	Location PHOENIX, ARIZONA	Building Number SITE											
				Date SEPTEMBER 2014	Checked RJO	Drawn DS	Drawing Number ES100 Dwg. 6 of 7										
							Department of Veterans Affairs										

