

# SHEET NOTES

- A. REFER TO MEP/F/P SHEETS FOR PHASING. TO REFLECT PHASING, SELECT MEP/F/UT AREAS OF CONSTRUCTION SHALL BE OUT OF SEQUENCE WITH ARCHITECTURAL CONSTRUCTION PHASING. TEMPORARILY REPLACE CEILING GRID AND TILE UNTIL ARCHITECTURAL PHASE REQUIRES CHANGES OR REPLACEMENT. DO NOT INSTALL NEW CEILING FINISHES/MATERIALS UNTIL ALL MEP/F/P CONSTRUCTION CEILING IS COMPLETE AND ARCHITECTURAL FINISHES ARE COMPLETE FOR THAT PHASE DESIGN AND FIGURE LOCATIONS AND QUANTITIES DEPICTED ON SCHEMATIC DRAWINGS ARE APPROXIMATE.
  - B. ITEMS DEPICTED IN BOLD UPPERCASES ON THIS SHEET ARE NEW OR RELOCATED, UNO. ITEMS DEPICTED IN LIGHT UPPERCASES ARE EXISTING TO REMAIN, UNDO.
  - C. EXTEND CONDUIT AND WIRING AS NECESSARY TO CONNECT TO AND RE-USE EXISTING CIRCUITING FOR NEW/RELOCATED LIGHT FIXTURES AND DEVICES.
  - D. PANEL NAMES IN CIRCUIT CALCULATIONS ON THIS SHEET HAVE BEEN ABBREVIATED FOR DRAWING CLARITY.
 

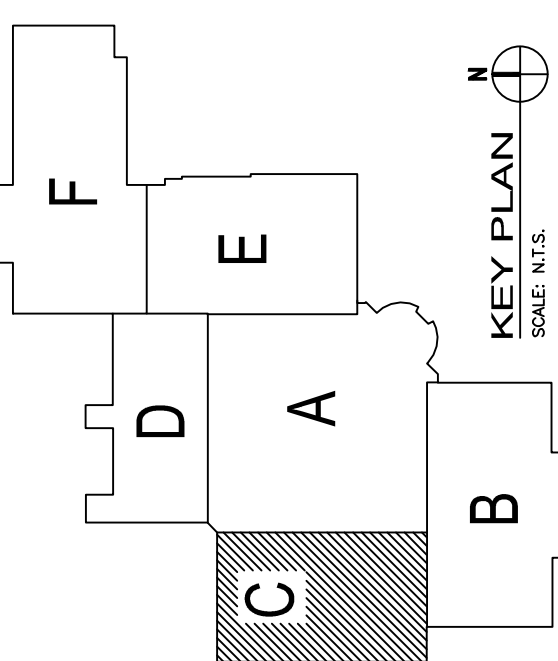
"C" REFERS TO "CLC"  
 "N" REFERS TO "NLC"  
 "N2" REFERS TO "NLC2"

## ○ SHEET KEYNOTES

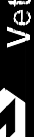
  1. SEE ENLARGED PLAN THIS SHEET FOR ELECTRICAL ROOM LAYOUT. PANELS, TRANSFORMERS, AND OTHER EQUIPMENT DEPICTED IN ROOM C127 ARE EXISTING, UNDO. NEW POWER CIRCUITS SHALL BE CONNECTED TO EXISTING PANELS IN ROOM C127 FROM A NEW OR SPARE CIRCUIT BREAKER.
  2. CABLES FOR NEW TELECOM OUTLETS SHALL BE ROUTED TO EXISTING COMM. ROOM C322 VIA EXISTING ABOVE CEILING CABLE TRAY AND EXISTING SLEEVES. SEE TELECOM RISER ON SHEET E500.
  3. PROVIDE NEW LIGHTING FIXTURE TO REDUCE GLARE ON R.F. ROOM CONTROL SCREENS. CONNECT TO EXISTING CIRCUIT.
  4. CIRCUIT(S) CONTINUE TO EXISTING-TO-REMAIN DOWNSTREAM FIXTURES.
  5. CONNECT TO EXISTING LIGHTING CIRCUIT.
  6. PROVIDE NEW SWITCH AND CONNECT TO EXISTING LIGHTING.
  7. NEW LOCATION FOR RELOCATED EXIT SIGN. RECONNECT TO EXISTING LIFE SAFETY CIRCUIT.
  8. CONNECT TO EXISTING LIFE SAFETY CIRCUIT TO PROVIDE POWER TO RELOCATED MED GAS ALARM PANEL. APP-5, NOTE, PANEL LLD IS LOCATED IN ROOM 0600.
  9. EXISTING SPEAKER RELOCATED TO NEW LOCATION.
  10. EXISTING CABLE TRAY.
  11. CONNECT TO EXIST. RECEPTACLE CIRCUIT.
  12. REPLACE EXISTING DUAL DIRECTION (LEFT AND RIGHT) EXIT SIGN WITH SINGLE DIRECTION (LEFT) EXIT SIGN. MATCH EXISTING TYPE AND STYLE. CONNECT TO SAME CIRCUIT.
  13. PROVIDE 120V L.S. POWER TO MED GAS PANEL.
  14. 2-SECT. PANEL C1C, 225A MAIN BREAKER, 100A/CB BREAKERS, SQUARE D, TYPE NQ00, 208Y/120V, 3PH, 4W.

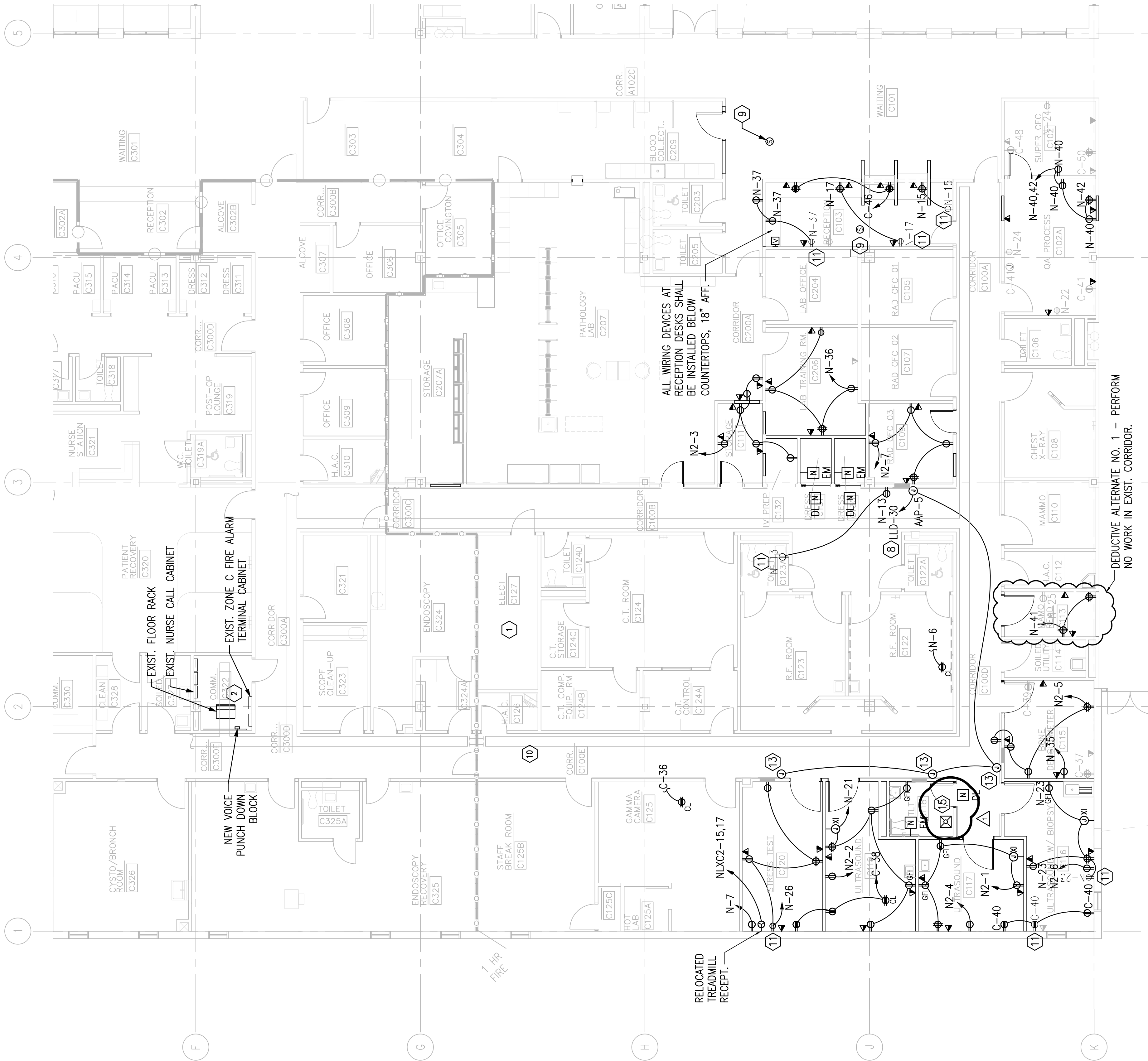
## SHEET KEYNOTES

1. SEE ENLARGED PLAN THIS SHEET FOR ELECTRICAL ROOM LAYOUT. PANELS, TRANSFORMERS, AND OTHER EQUIPMENT DEPICTED IN ROOM C127 ARE EXISTING. UNO. NEW POWER CIRCUITS SHALL BE CONNECTED TO EXISTING PANELS IN ROOM C127. UNO. NEW OR SPARE CIRCUIT BREAKERS.
2. CABLES FOR NEW TELECOMM OUTLETS SHALL BE ROUTED TO EXISTING COMM. CLOSET. UNO. NEW TELECOMM CABLE TRAY AND EXISTING SERVICES. SEE TELECOMM RISER ON SHEET E500.
3. PROVIDE NEW LIGHTING FIXTURE TO EXISTING CLARE ON R.F. ROOM CONTROL SERVICES. CONNECT TO EXISTING CIRCUIT.
4. CIRCUIT(S) CONTINUE TO EXISTING-TO-REMAIN DOWNSTREAM FIXTURES.
5. CONNECT TO EXISTING LIGHTING CIRCUIT.
6. PROVIDE NEW SWITCH AND CONNECT TO EXISTING LIGHTING.
7. NEW LIGHTING FOR RELOCATED EXIT SIGN. RECONNECT TO EXISTING LIFE SAFETY CIRCUIT.
8. CONNECT TO EXISTING LIFE SAFETY CIRCUIT TO PROVIDE POWER TO RELOCATED MED GAS ALARM PANEL. UNO. EXISTING LIFE SAFETY PANEL LLD IS LOCATED IN ROOM D800.
9. EXISTING SPEAKER RELOCATED TO NEW LOCATION.
10. EXISTING CABLE TRAY.
11. CONNECT TO EXIST. RECEPTACLE CIRCUIT.
12. REPLACE EXISTING DUAL DIRECTION (LEFT AND RIGHT) EXIT SIGN WITH SINGLE DIRECTION (LEFT) EXIT SIGN. MATCH EXISTING TYPE AND STYLE. CONNECT TO SAME CIRCUIT.
13. PROVIDE 120V LLS. POWER TO MED GAS PANEL.
14. 2-SECT. PANEL GLC, 225A MAIN BREAKER, 108AC BREAKERS, SQUARE D, TYPE NQ00, 208Y/120V, 3PH, 4W.



FINAL DESIGN SUBMITTAL  
APPROVED FOR CONSTRUCTION

Drawing Title <b>ELECTRICAL FLOOR PLANS</b>	Project Title <b>RENOVATE LABORATORY AND RADIOLOGY DEPARTMENTS</b>		Project Number <b>675-14-150</b>		Office of Construction and Facilities Management
			Building Number <b>1</b>		
Approved: Project Director	Location <b>VIERA VA OUTPATIENT CLINIC</b>		Drawing Number <b>E200</b>		 Department of Veterans Affairs
	Date <b>AUGUST 7, 2015</b>				
	Checked RAH		Drawn KLL		

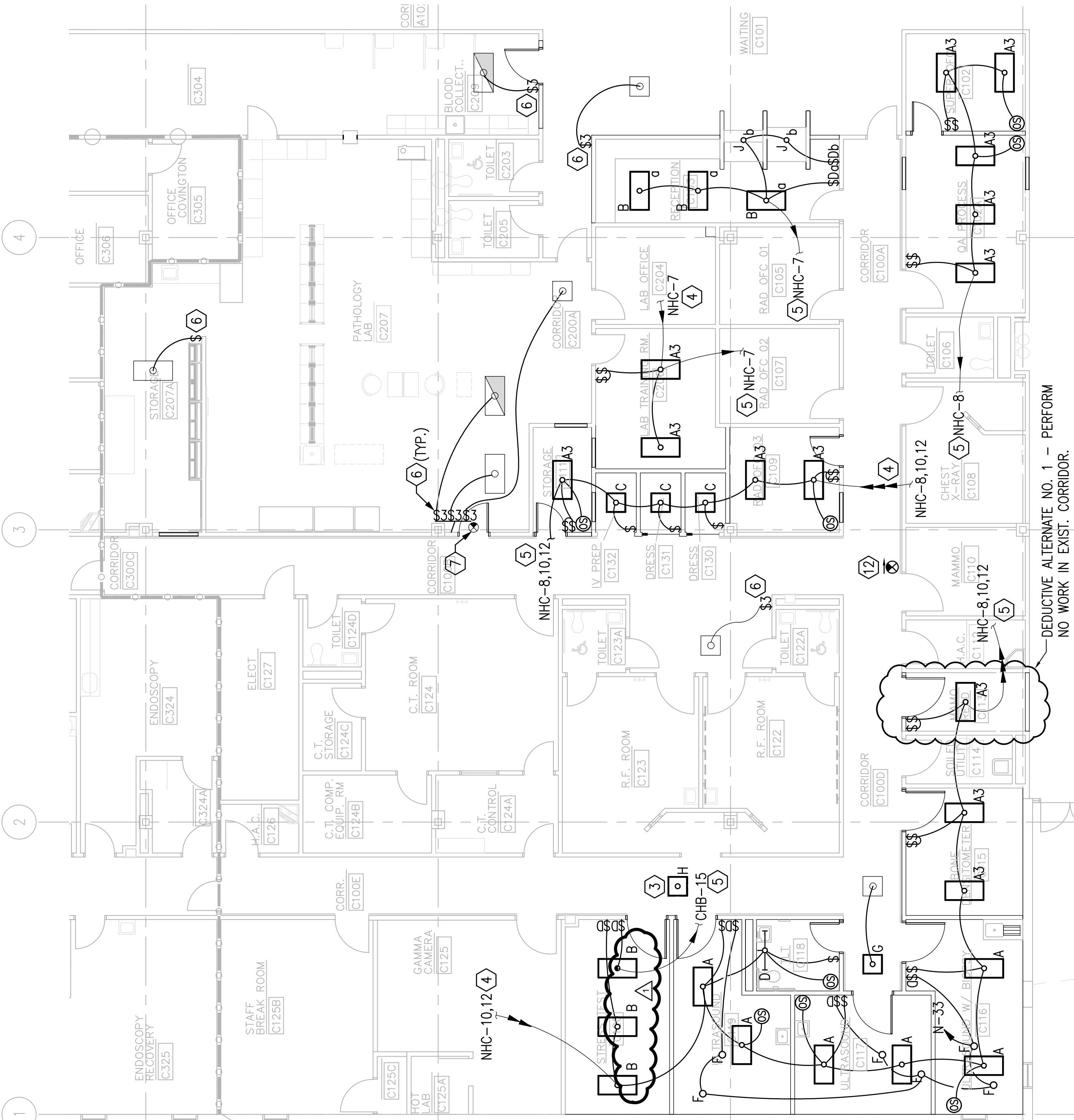


# RADIOLOGY FLOOR PLAN - POWER & SYSTEMS

SCALE: 1/8" = 1'-0"

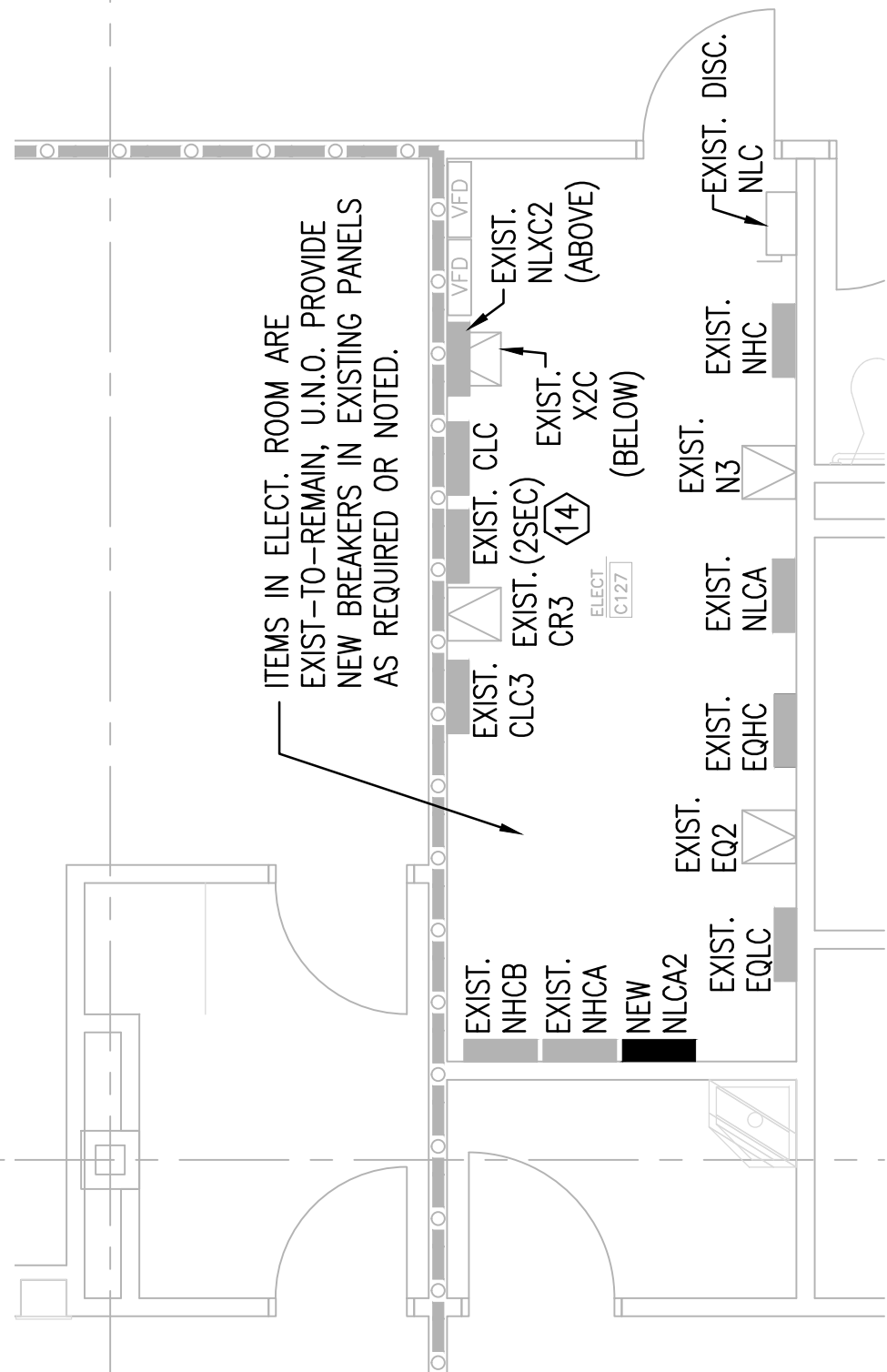
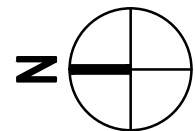
## SHEET KEYNOTES

15. FIRE ALARM STROBE ASSEMBLY,  
RELOCATED FROM CORR. C1000.  
CONNECT TO LOCAL NOTIFICATION  
APPLIANCE CIRCUIT. PROVIDE TEST AND  
CERTIFICATION FOR NOTIFICATION CIRCUIT.



## RADIOLOGY FLOOR PLAN - LIGHTING

SCALE: 1/8" = 1'-0"



# ENLARGED ELECTRICAL ROOM

SCALE: 1/4" = 1'-0"

△ ADDENDUM NO.1	10-9-15	CONSULTANTS:
Revisions:	Date	

ARCHITECT/ENGINEERS:

**AKEA** INC.

3603 NW 98th Street, Suite B  
Gainesville, FL 32606  
Phone: (352) 474-6124  
Fax: (352) 474-6324  
COA: FL #26693  
AKEA Project No. 088-14

ENGINEER-OF-RECORD  
FL. P.E. NO. 77077

446/C ITCENH W TMMNMC

CONSULTANTS:

0-9-15

ADD