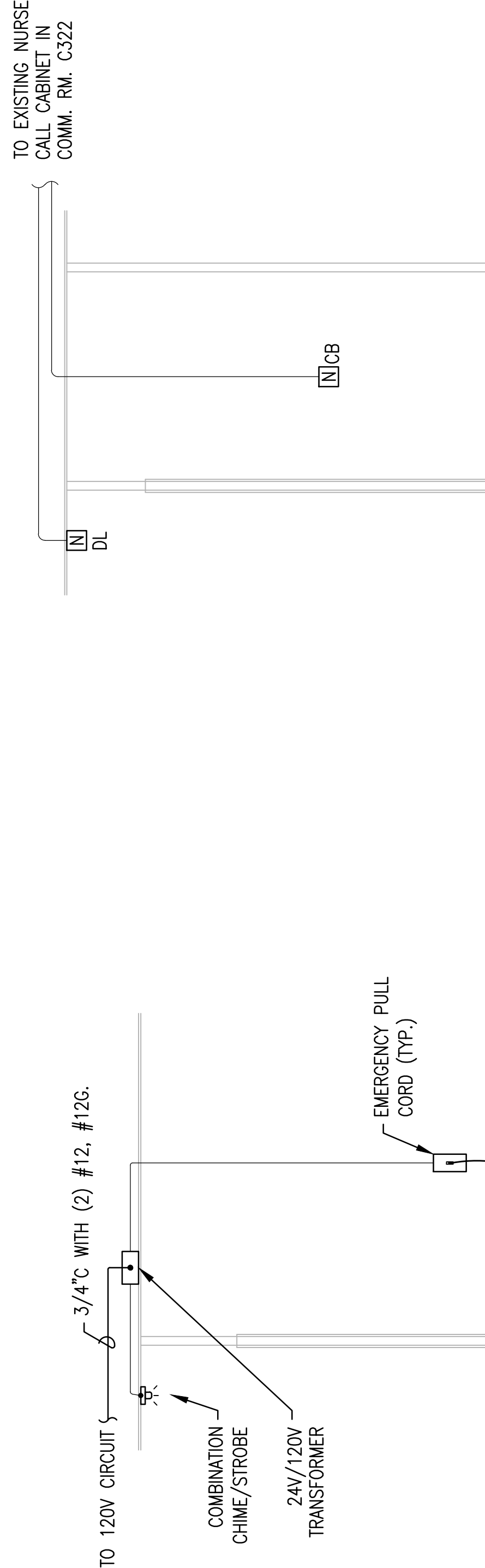
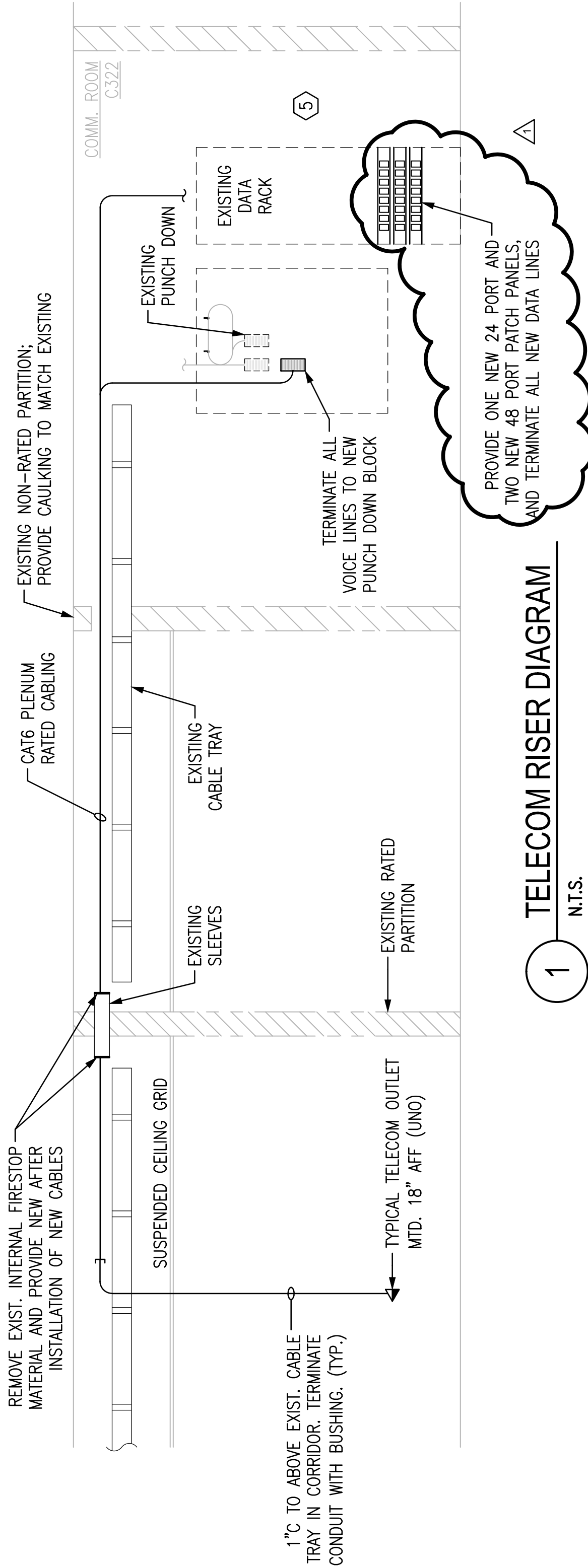
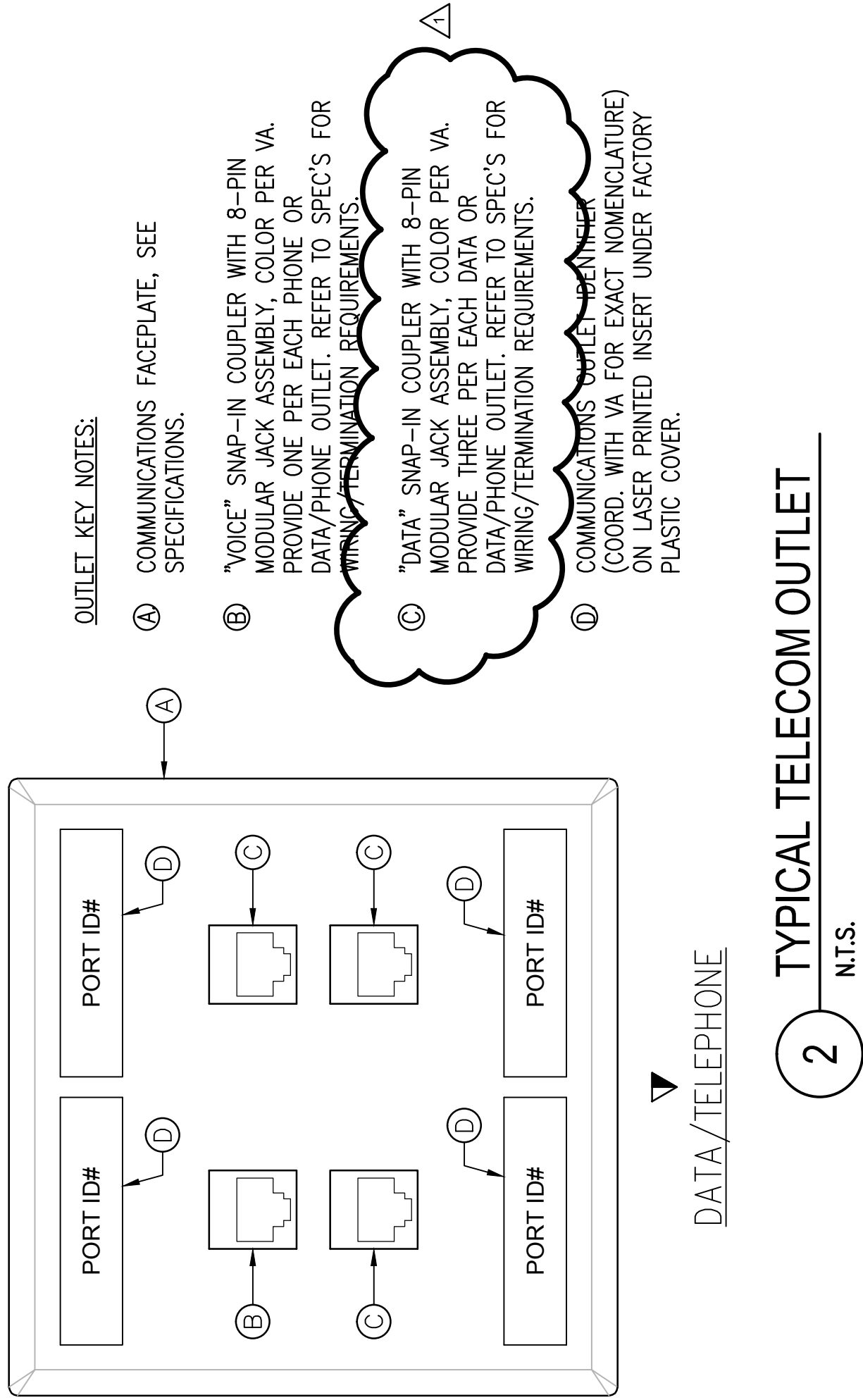
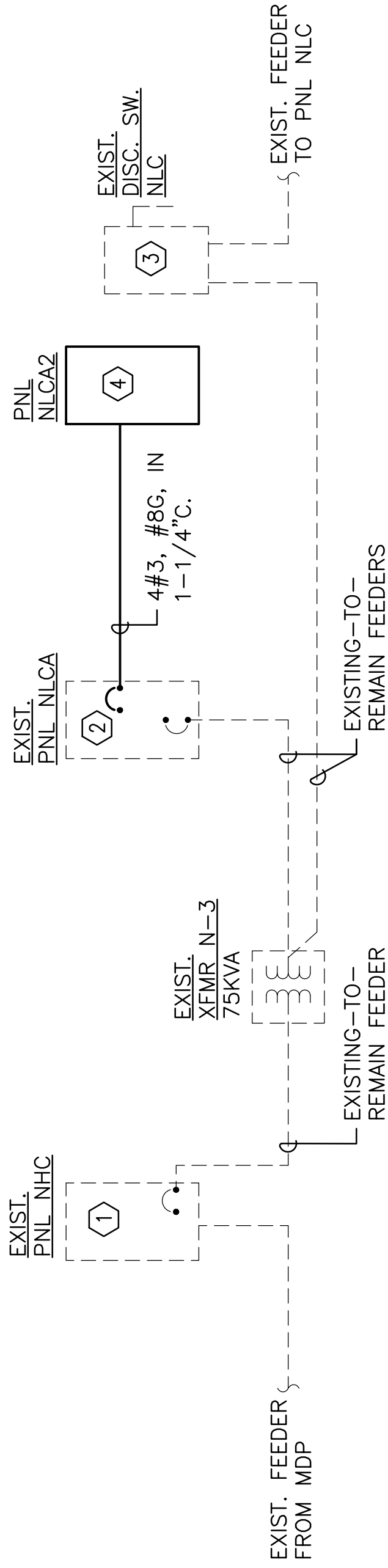


SHEET KEYNOTES	
1.	EXISTING PANEL NHC, SQUARE D TYPE NF, 480Y/277V, 3PH, 4W, 35KAIC, 600A BUS, FED FROM 400/3 BREAKER IN MDP.
2.	EXISTING PANEL NLCA, SQUARE D TYPE N00D, 225A MAX, BUS, 3PH, 4W, 208Y/120V, 10KAIC, PROVIDE NEW 100A/3P BRANCH BREAKER TO FEED NEW PANEL NLCA2. SEE PANEL SCHEDULE FOR ADDITIONAL MODIFICATIONS.
3.	EXISTING DISCONNECT SWITCH, FUSED AT 150A.
4.	PROVIDE NEW PANEL. SEE PANEL SCHEDULE.
5.	CONTRACTOR SHALL PROVIDE TURN-KEY INSTALLATION OF VOICE AND DATA SYSTEMS AND EQUIPMENT REQUIRED FOR FULLY OPERATIONAL SYSTEMS, INCLUDING TERMINATIONS AND PATCH CABLES AS NEEDED. COORD. ALL WORK IN COMM. RM. WITH VA COR AND IT DEPARTMENT.
6.	ALL CONDUIT AND/OR CABLEING PENETRATIONS OF FIRE RATED PARTITIONS SHALL BE SEALED WITH A FIRESTOP MATERIAL AS MANUFACTURED BY A SINGLE SUPPLIER. FOR ANY GIVEN PENETRATION, ONLY ONE FIRESTOP SEALANT MANUFACTURER SHALL BE PERMITTED.



NOTE:  
REMOVE EXISTING CODE BLUE BUTTON IN CURRENT STRESS TEST ROOM AND TURN OVER TO THE VA. PROVIDE NEW CODE BLUE BUTTON AND DOME LIGHT IN NEW STRESS TEST ROOM C120. MATCH AND EXTEND EXISTING CONDUCTORS AND CONDUIT FROM CURRENT STRESS TEST ROOM AS REQUIRED. CONFIRM EXACT WALL LOCATION AND HEIGHT OF BUTTON WITH COR PRIOR TO ROUGH-IN. EXISTING CODE BLUE AND NURSE CALL SYSTEM IS RAUAND-BORG.

4 CODE BLUE ALARM DETAIL  
N.T.S.



5 NORMAL POWER RISER DIAGRAM  
N.T.S.

FINAL DESIGN SUBMITTAL  
APPROVED FOR CONSTRUCTION

ADDENDUM NO.1		CONSULTANTS:		ARCHITECT/ENGINEERS:		DRAWING TITLE SYSTEMS DETAILS, RISERS, AND PANEL SCHEDULES		PROJECT TITLE RENOVATE LABORATORY AND RADIOLOGY DEPARTMENTS		PROJECT NUMBER 675-14-150	
				ENGINEER-OF-RECORD RANDALL A. HENSELEY SPE. NO. 37944						BUILDING NUMBER 1	
						ARCHITECT/ENGINEERS:  <b>AKEA INC.</b> 3603 NW 98th Street, Suite B Gainesville, FL 32606 Phone: (352) 474-6124 Fax: (352) 474-6324 C/OA: FL #26693 AKEA Project No. 088-14				DRAWING NUMBER E500	
										</	