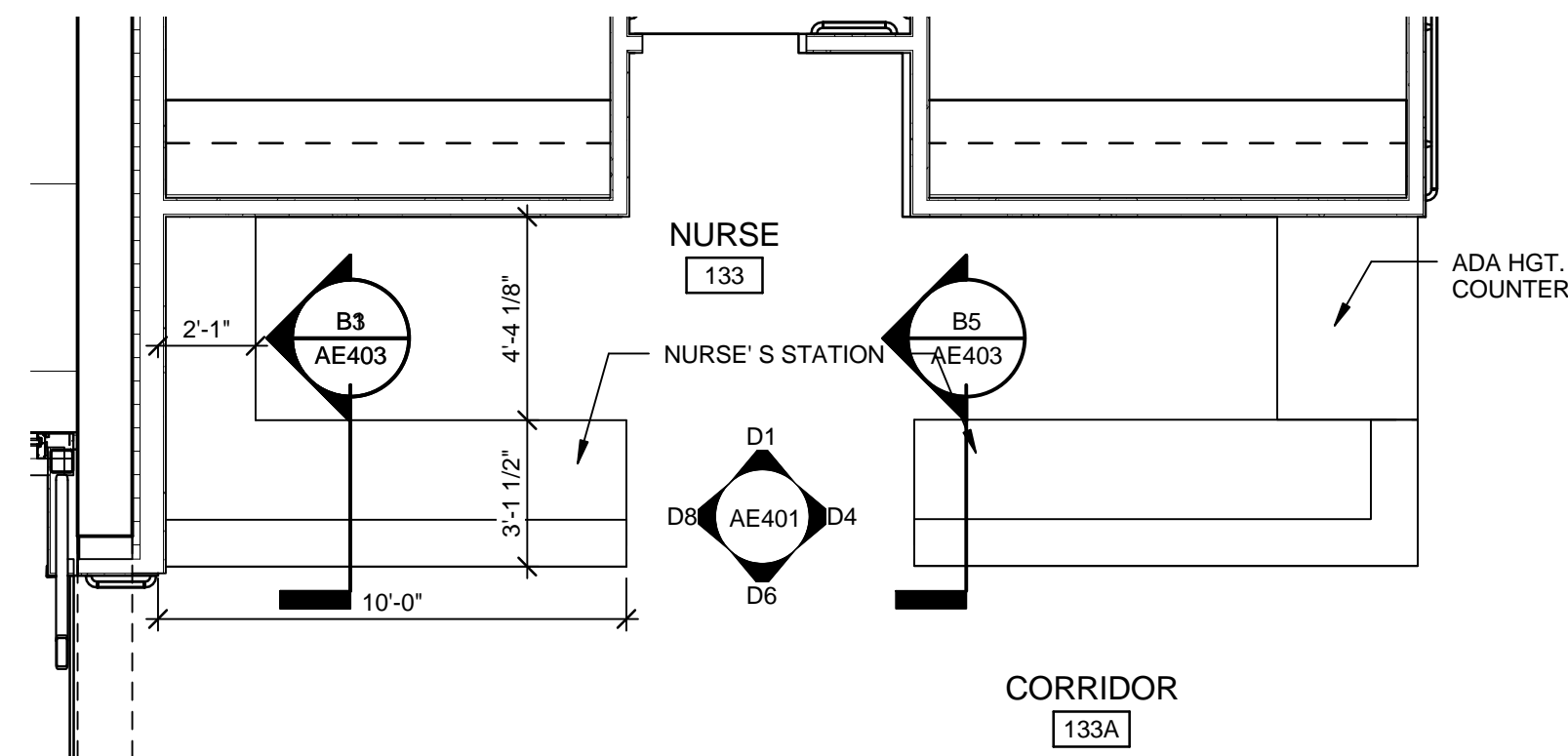
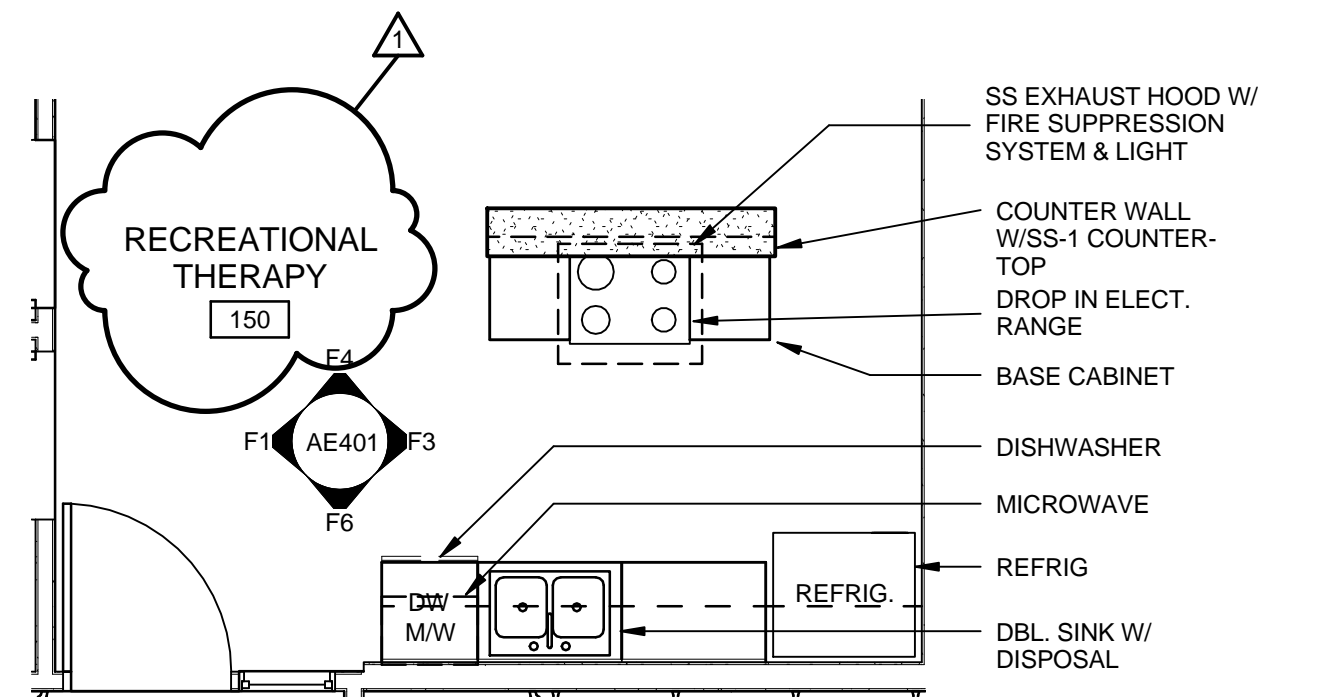


B1 ENLARGED PLAN BREAKROOM
1/4" = 1'-0"



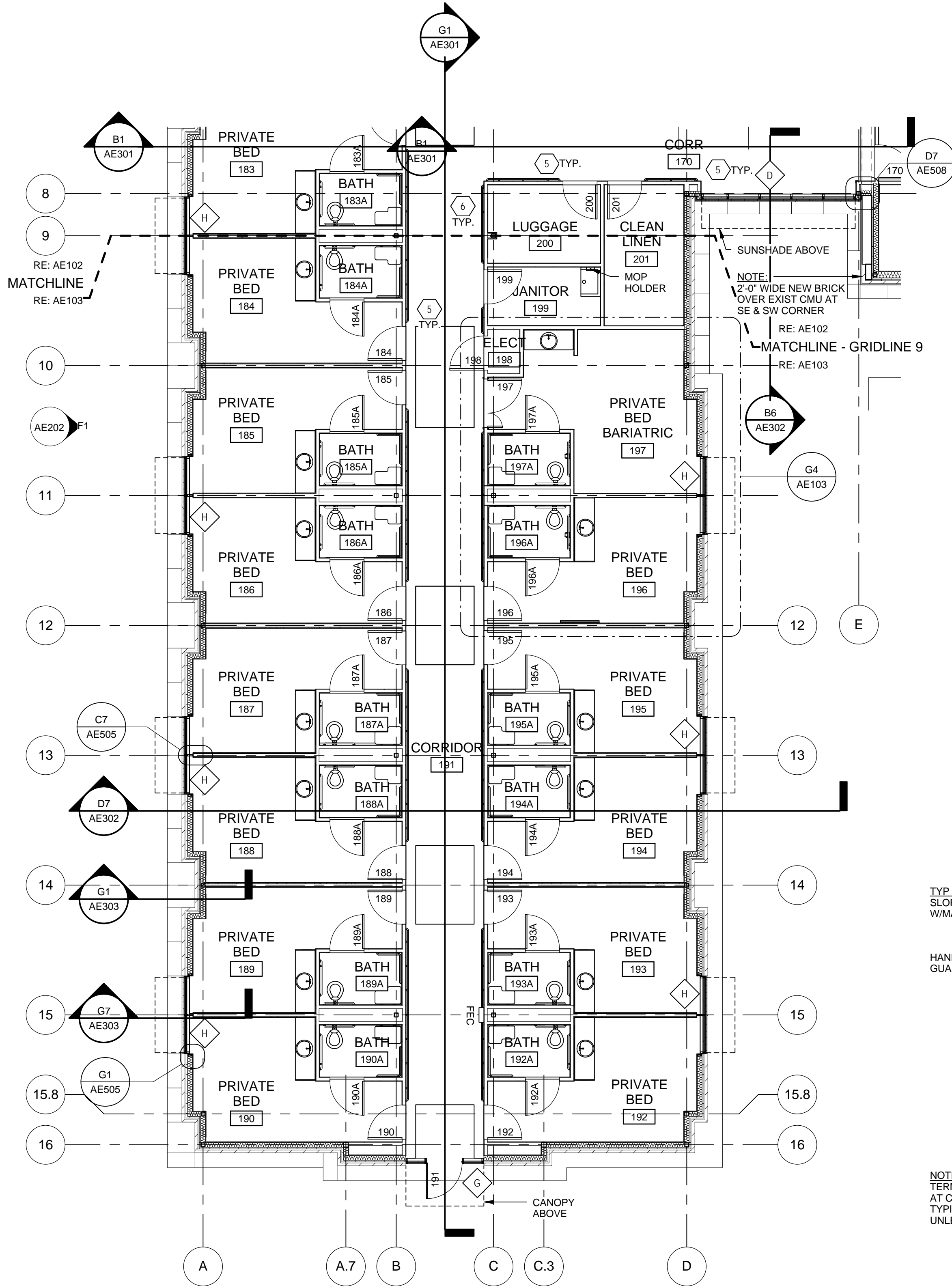
B3 ENLARGED PLAN NURSE 133
1/4" = 1'-0"



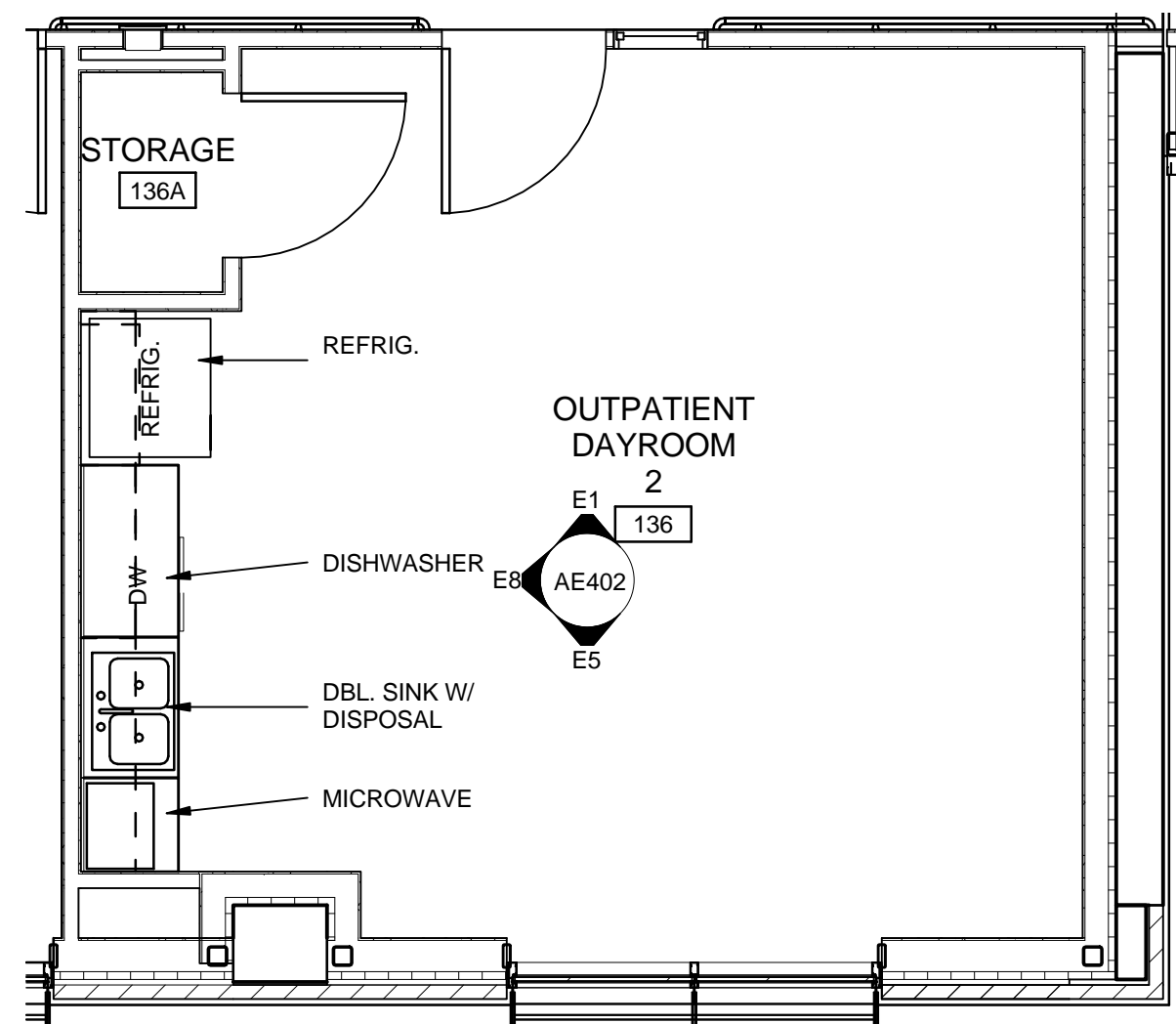
B6 ENLARGED PLAN REC. THERAPY 150
1/4" = 1'-0"

FLOOR PLAN NOTES	
1	1-1/2" EXPANSION JOINT AND COVER
2	TRENCH DRAIN
3	INFILL EXISTING OPENING (BRICK VENEER, RIGID INSULATION, GYPSUM BOARD ON METAL FRAMING)
4	INFILL EXISTING OPENING (5/8" GYPSUM BOARD, METAL STUDS, 5/8" GYPSUM BOARD - PAINT)
5	PROVIDE ABUSE RESISTANT GWB 4" HIGH IN ALL CORRIDORS, DAYROOMS, LAUNDRY, ACTIVITY ROOMS, THERAPY AND GROUP ROOMS
6	HANDRAIL/WALL GUARD & CORNER GUARDS - RE: AE108 & AE109 FOR LOCATIONS
7	PROVIDE SLOTTED ATTACHMENT CLIPS AT NEW WALL STUDS ALONG NORTH SIDE OF EXISTING BLDG HIGH WALL (AREA "B") FOR 1 1/2" HORIZONTAL MOVEMENT (TYPICAL)

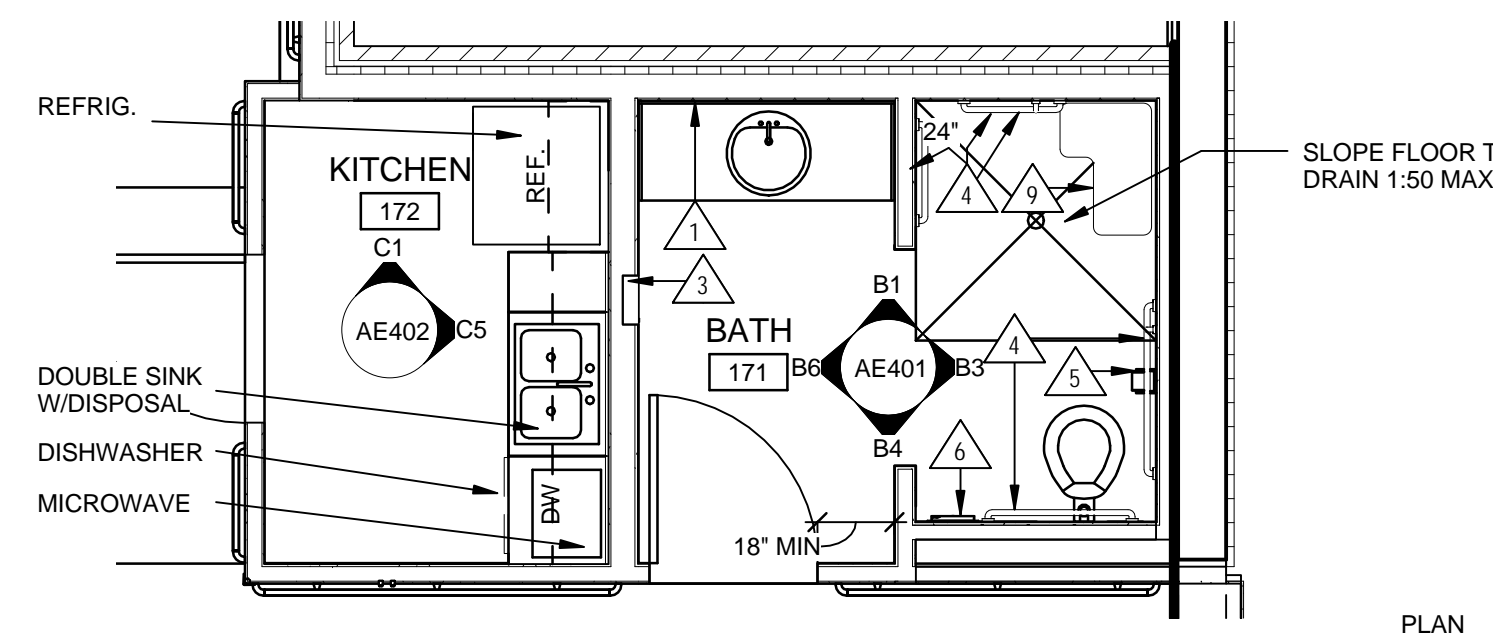
FURNITURE NOTES	
1	NON MEDICAL BED (39"x84") (NIC)
2	NON MEDICAL BED (42"x84") (NIC)
3	DESK (NIC)
4	DESK CHAIR (NIC)
5	SHELVING UNIT (OPEN CUBICLES) (NIC)
6	WHITE MARKER BOARD (4'-0"x4'-0") (NIC)
7	WINDOW DRAPES (NIC)
8	LAMINATED GLASS MIRROR
9	DOOR VEWIER



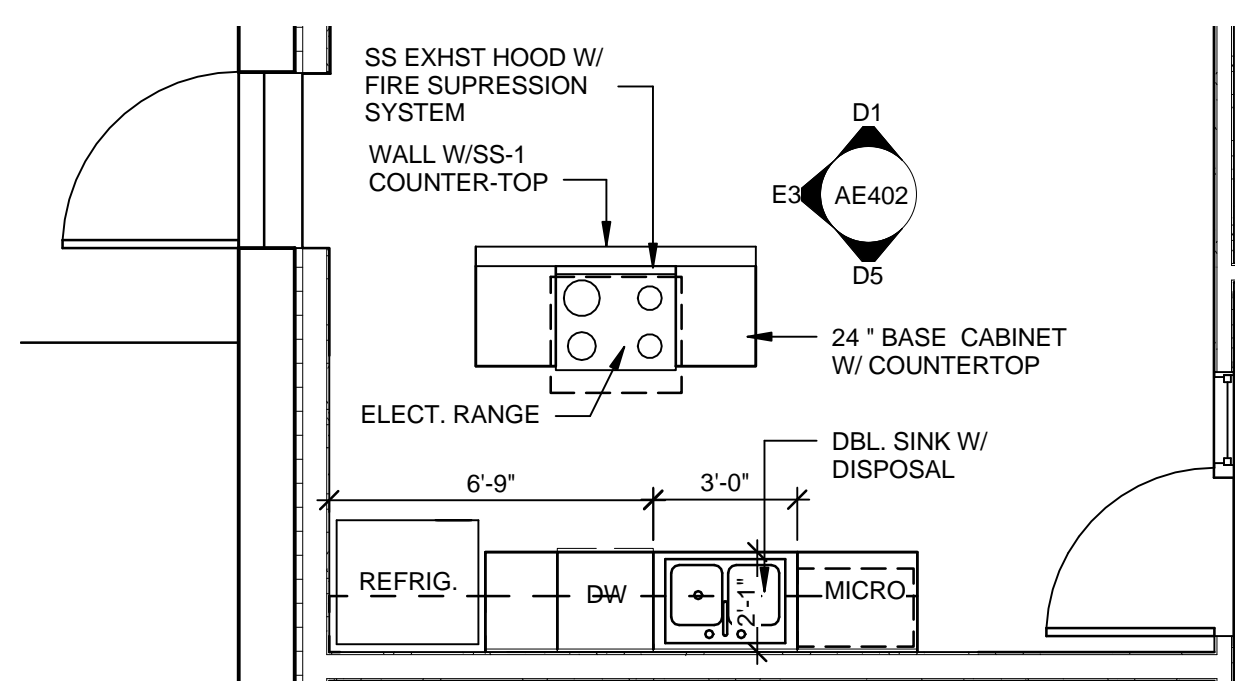
G1 FLOOR PLAN - PARTIAL AREA "A"
1/8" = 1'-0"



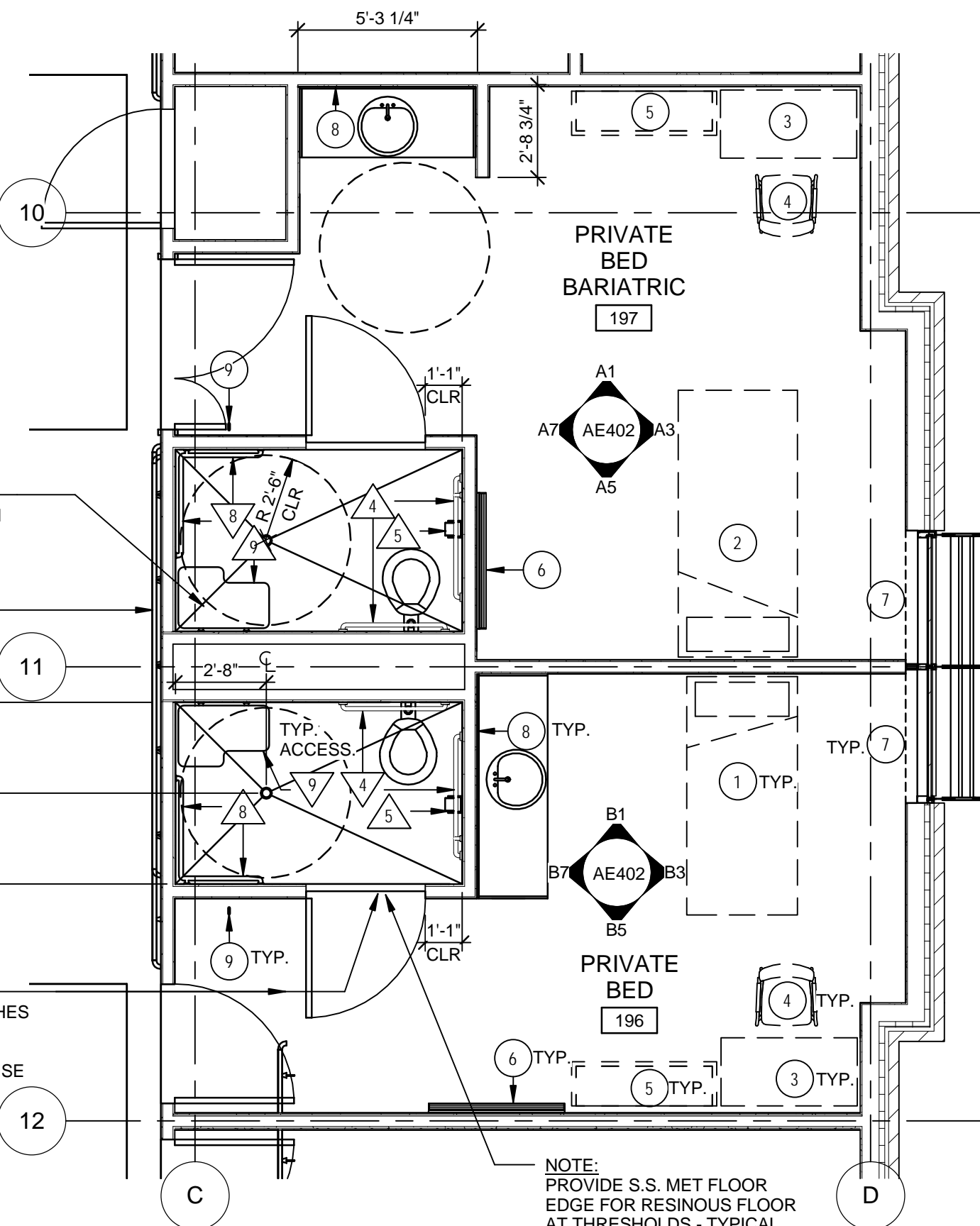
D5 ENLARGED PLAN OUTPATIENT DAYROOM 2
1/4" = 1'-0"



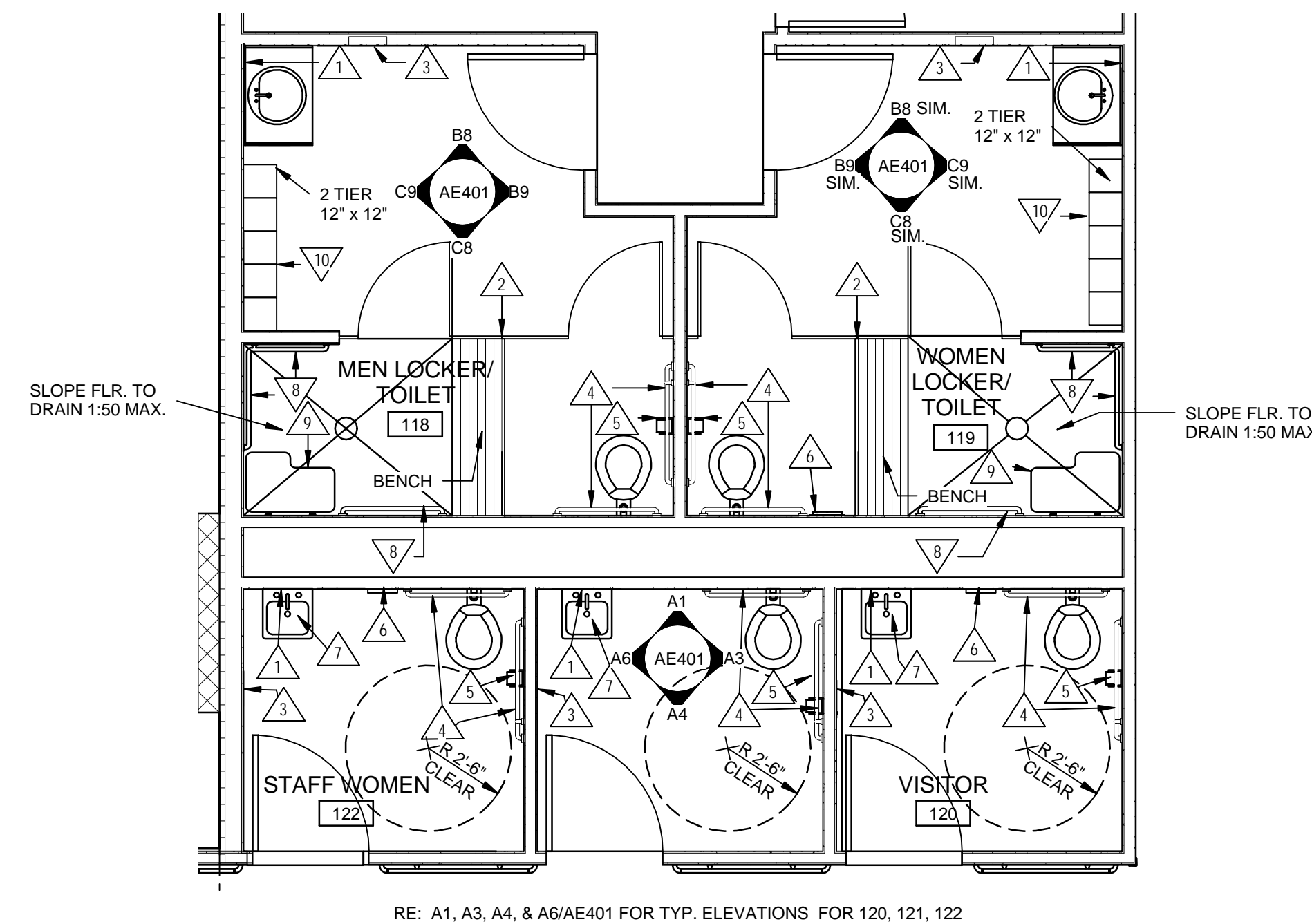
C6 ENLARGED PLAN KITCHEN 171 & BATH 172
1/4" = 1'-0"



D6 ENLARGED PLAN DAYROOM KITCHEN 153A
1/4" = 1'-0"



G4 ENLARGED PRIVATE BED - BARIATRIC & TYPICAL
1/4" = 1'-0"



F6 ENLARGED PLAN TOILET 118-122
1/4" = 1'-0"

TOILET ACCESSORY SCHEDULE

- AFF = ABOVE FINISH FLOOR
- 24" x 36" SURFACE MOUNTED MIRROR WITH S.S. FRAME, MOUNT 3'-4" AFF MAX. TO BOTTOM OF REFLECTING EDGE. PROVIDE LAMINATED MIRROR GLASS IN ALL PATIENT AREAS
- FLOOR MTD. OVERHEAD BRACED TOILET PARTITIONS. SEE NOTE 9 (TOILET ACCESSORY GENERAL NOTES)
- COMBINATION PAPER TOWEL DISPENSER, DISPOSAL
- STAINLESS STEEL GRAB BARS, MOUNT AT 36" AFF TO TOP OF BAR. SEE NOTES 1, 2, 4, (TOILET ACCESSORIES/GENERAL NOTES)
- SURFACE MOUNTED TOILET PAPER HOLDER, MOUNT 1'-7" AFF TO CENTER LINE OF UNIT, 3'-0" FROM WALL BEHIND WATER CLOSET TO FRONT OF UNIT.
- SANITARY NAPKIN DISPOSAL
- UNDERSINK INSULATED PIPING COVERS. INSTALL ON ALL EXPOSED HOT WATER SUPPLY AND DRAIN PIPES.
- STAINLESS STEEL GRAB BARS, MOUNT AT 36" AFF TO TOP OF BAR. SEE NOTES 1, 2, 6, (TOILET ACCESSORIES/GENERAL NOTES) WITH SAFETY GRIP FINISH. LENGTHS AS INDICATED.
- ADA SHOWER SEAT
- STORAGE LOCKERS

TOILET ACCESSORY/GENERAL NOTES

- REFER TO TOILET ACCESSORIES - ADA MOUNTING HEIGHTS, SHEET G1003 FOR ADDITIONAL INSTALLATION REQUIREMENTS AND SIZES
- GRAB BAR ANCHORS SHALL SUPPORT A CONCENTRATED LOAD OF 250 LB APPLIED AT ANY POINT AND ANY DIRECTION. REFER TO ADAAG SECTION 4.26 AND STATE BUILDING CODE.
- GRAB BARS SHALL HAVE 1-1/2" O.D. (MAX) AND 1-1/2" CLEARANCE BETWEEN BAR AND WALL. (ABSOLUTE)
- AT ALL ACCESSIBLE TOILETS, THE CENTERLINE OF WATER CLOSETS SHALL BE LOCATED AT 1'-6" (18") OFF THE ADJACENT WALL OR PARTITION. THIS DIMENSION SHALL BE FROM THE CENTERLINE OF WATER CLOSET TO THE FINISH FACE OF THE WALL OR PARTITION.
- ALL GRAB BARS SHALL BE 36" LONG AT THE BACK OF THE WATER CLOSET AND 42" LONG AT THE SIDE OF THE WATER CLOSET. WITH AN 18" LONG VERTICAL GRAB BAR BESIDE THE WATER CLOSET UNLESS OTHERWISE SCHEDULED.
- INSULATE ALL EXPOSED PIPES (SUPPLY AND DRAIN) IN OPEN KNEE SPACE BELOW LAVATORIES AND SINKS.
- PROVIDE LEVEL HANDLES AT ALL LAVATORIES AND SINKS.
- REFER TO THE ADAAG FOR REQUIRED MOUNTING HEIGHTS AND CLEAR FLOOR SPACE REQUIREMENTS OF ELEMENTS.
- 2'-6"x4'-0" CLEAR FLOOR SPACE FOR LAVATORY FRONT APPROACH.
- TOILET PARTITION COAT HOOK AND BUMPERS BY TOILET PARTITION MANUFACTURER.
- 2'-6" x 4'-0" CLEAR FLOOR SPACE FOR ACCESSIBLE URINAL.
- FLUSH HANDLES SHALL BE MOUNTED ON THE WIDE SIDE OF THE ACCESSIBLE TOILET STALL OR ROOM. COORDINATE WITH PLUMBING PLAN.
- PROVIDE LEVER HANDLES AT ALL LAVATORIES AND SINKS.

FULLY SPRINKLERED
100% CONSTRUCTION DOCUMENTS

CONSULTANTS:		09/07/2012	ARCHITECT / ENGINEERS:		Drawing Title	Project Title		Project Number	Office of Facilities Management DEPARTMENT OF VETERANS AFFAIRS
					FLOOR PLAN - PARTIAL AREA A & ENLARGED PLANS	Renovate Leroy Pond Army Reserve Center for Mental Health Residential Rehabilitation Treatment/ Police Training		564-341	
					Approved: Project Director	Location		Building Number	
						Fayetteville, AR		Drawing Number	
						Date		AE103	
						9/7/12		Dwg. 49 of 126	
						Checked			
						SG			
						Drawn			
						JMB			