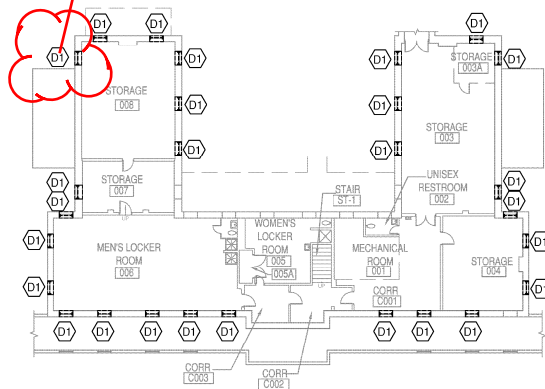
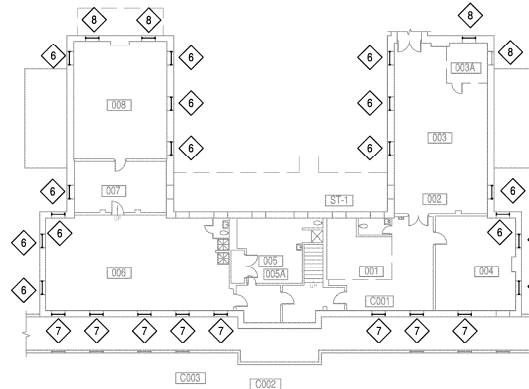


There is no window at this location it is a brick infill, is the brick to be removed for the new window or will this new window be deleted?



1 BUILDING 5 - WINDOW DEMOLITION PLAN
AE103 SCALE: 1/16" = 1'-0"



2 BUILDING 5 - WINDOW REPLACEMENT PLAN
AE103 SCALE: 1/16" = 1'-0"

DEMOLITION KEY NOTES:

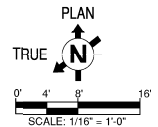
1. REMOVE EXISTING WINDOW AND OR INFILL MATERIAL.
2. REMOVE EXISTING WINDOW AND SECURITY SCREEN. CLEAN AND REPLACE EXISTING SECURITY SCREEN AT THIS LOCATION.

KEY NOTES:


1. EXISTING WINDOW TO REMAIN, REPAIR, PATCH, PAINT AND SEAL EXISTING INTERIOR WINDOW TRIM TO GREATEST EXTENT POSSIBLE. COORDINATE TRIM REPLACEMENT WITH COR WHEN REPAIRS ARE NOT REASONABLE.
2. PROVIDE OBSCURE GLASS AT THIS LOCATION.
3. PROVIDE REPLACEMENT INFILL MATERIAL BELOW WINDOW TO MATCH THE INFILL MATERIAL AT LOCATIONS ABOVE.
4. WINDOW INSTALLATION FROM INTERIOR AT THIS LOCATION. CLEAN AND REPAIR EXISTING EMBEDDED SECURITY BARS TO MATCH EXISTING CAMPUS STANDARD COLOR. COORDINATE WITH COR.

LEGEND:

- EXISTING CONSTRUCTION TO REMAIN
- DEMOLITION
- NEW WINDOW OR PANEL
- EXISTING LOUVER TO REMAIN
- WINDOW TYPE TAG
- INSULATED PANEL TAG



BID DOCUMENTS

CONSULTANTS:		ARCHITECT/ENGINEERS:		Drawing Title B5 - WINDOW DEMOLITION / REPLACEMENT PLANS	Project Title ENERGY AUDIT CORRECTIONS PHASE I	Project Number 666-15-10 Building Number 5	Office of Construction and Facilities Management	
				Approved Project Director DOUGLAS G. LOFFREN, SUPERVISORY STAFF ENGINEER/ENERGY MANAGER PLANT OPERATIONS MAINT + REPAIR PM OFFICE: 307-475-2671 EMAIL: DOUGLASLOFFREN@VA.GOV	Location FT. MCKENZIE, SHERIDAN, WY	Drawing Number AE103		
Revision				Date JANUARY 2015	Checked RJO	Drawn LFL	Dep 5 of 17	

VA FORM 08-6331

1

2

3

4

5

6

7

8

9