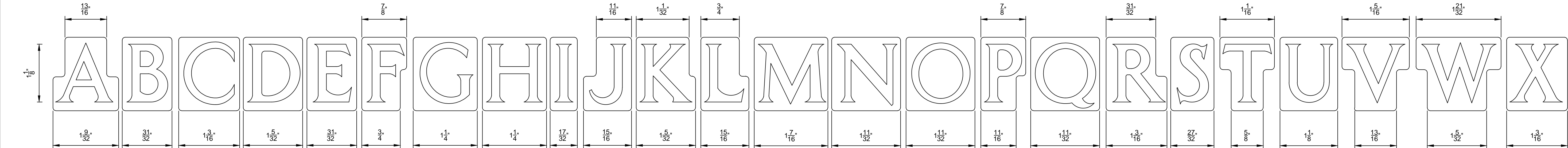
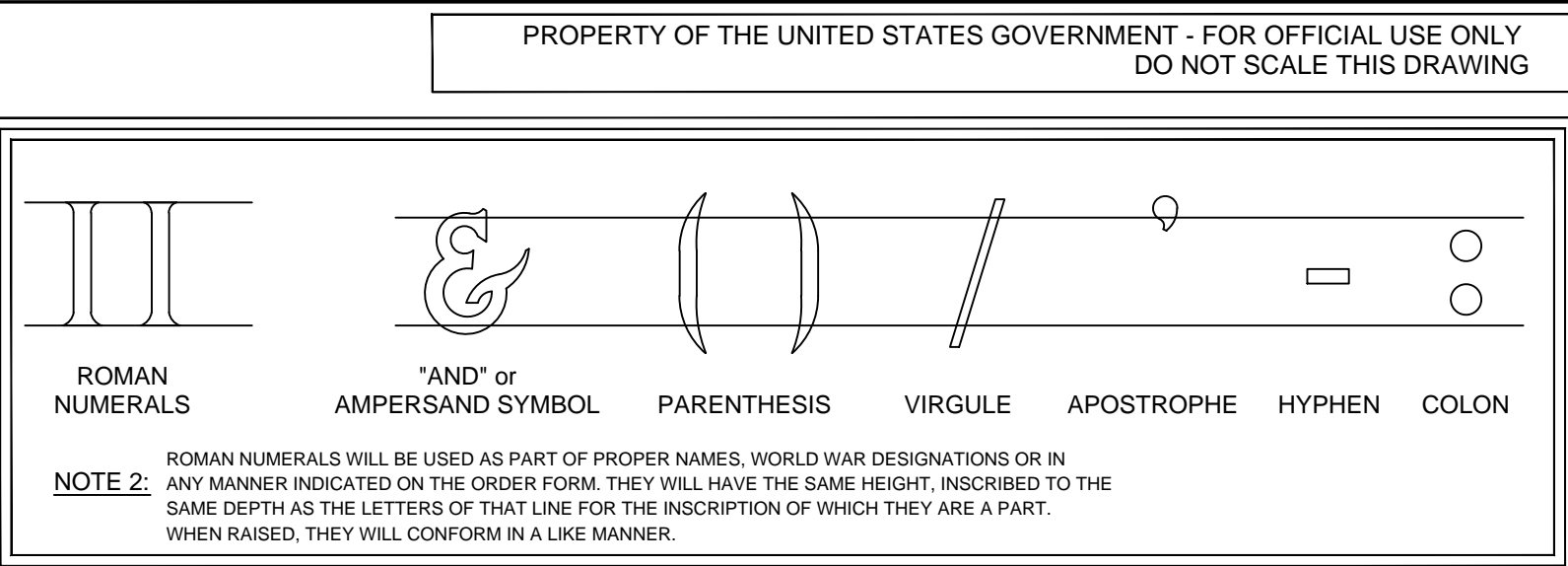
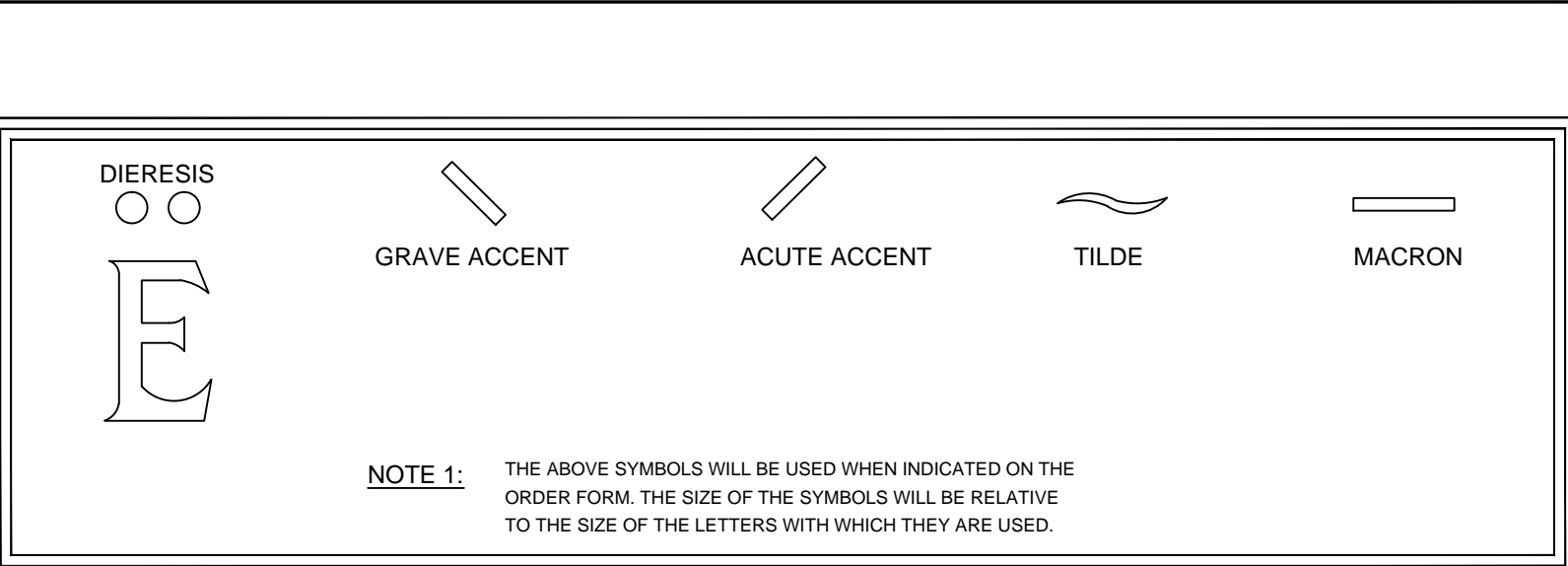
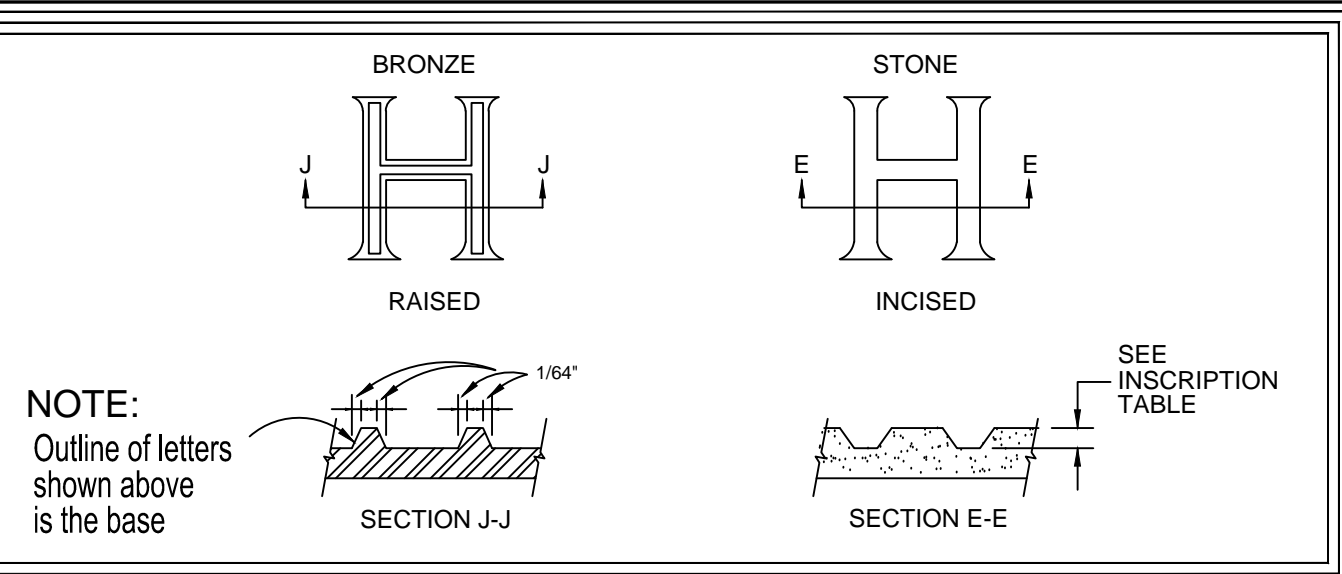


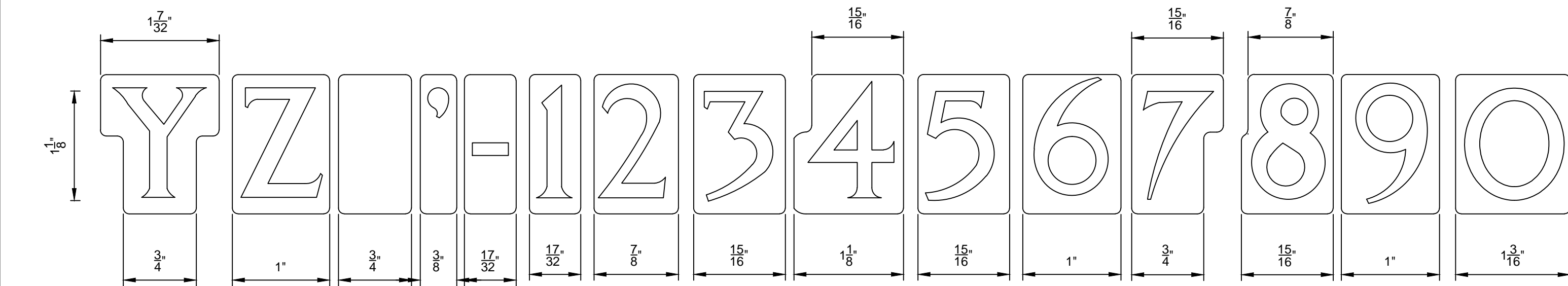
DRAWING LOCATION	MARKER TYPE	ITEM NAME AND LETTER HEIGHT								
		L1	L2	L3	L4	L5	L6	L7	EMBLEM	
		1 1/8"	1"	7/8"	3/4"	7/16"	3/8"	5/8"	2" OR 3"	
		DEPTH BY MARKER TYPE								
A-B1	B1	N/A	3/32"	N/A	3/32"	N/A	N/A	N/A	3/32"	
A-F-1	F1	7/32" - 9/32"	N/A	6/32" - 7/32"	6/32" - 7/32"	N/A	N/A	N/A	7/32" - 9/32"	
A-G1/J1/L1	G1/J1/L1	7/32" - 9/32"	N/A	6/32" - 7/32"	6/32" - 7/32"	N/A	N/A	N/A	7/32" - 9/32"	
A-MW-1/23	A1/C1	N/A	N/A	N/A	N/A	4/32" - 5/32"	N/A	4/32" - 5/32"	4/32" - 5/32"	
A-NCIS-1/2	E1/H1/I1	5/32" - 7/32"	4/32" - 6/32"	4/32" - 6/32"	4/32" - 6/32"	N/A	N/A	N/A	5/32" - 7/32"	
A-U1-1/2	U1	7/32" - 9/32"	6/32" - 7/32"	6/32" - 7/32"	6/32" - 7/32"	N/A	N/A	N/A	7/32" - 9/32"	
A-V1/W1	V1/W1	7/32" - 9/32"	N/A	6/32" - 7/32"	6/32" - 7/32"	N/A	N/A	N/A	7/32" - 9/32"	
A-XA/XB/XC	XA/XB/XC	N/A	3/16" RAISED AND INSCRIBED	N/A	N/A	N/A	N/A	N/A	N/A	
A-YA	YA	N/A	3/16" RAISED AND INSCRIBED	N/A	N/A	N/A	N/A	N/A	N/A	
A-Z1	Z1	N/A	N/A	N/A	N/A	3/32"	3/32"	N/A	3/32"	

DEPTH BY TYPE

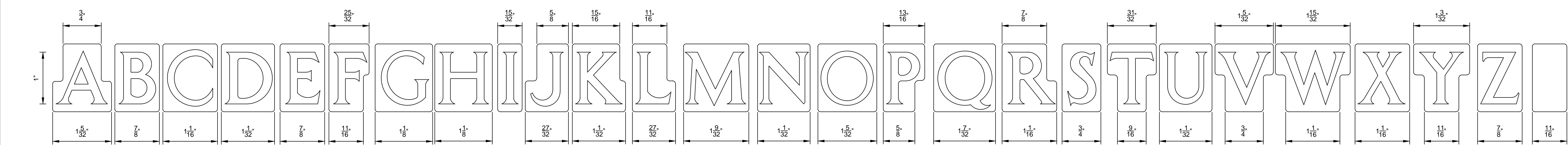
NOTE: AS OF OCTOBER 1, 2013 THE DEPTHS SURROUNDED BY BOLD BORDERS SUPERCEDE DEPTHS WHICH WERE PREVIOUSLY SPECIFIED AND MUST BE FOLLOWED IN LIEU OF DEPTHS SHOWN IN DRAWINGS RELATED TO SPECIFIC MONUMENT TYPES.



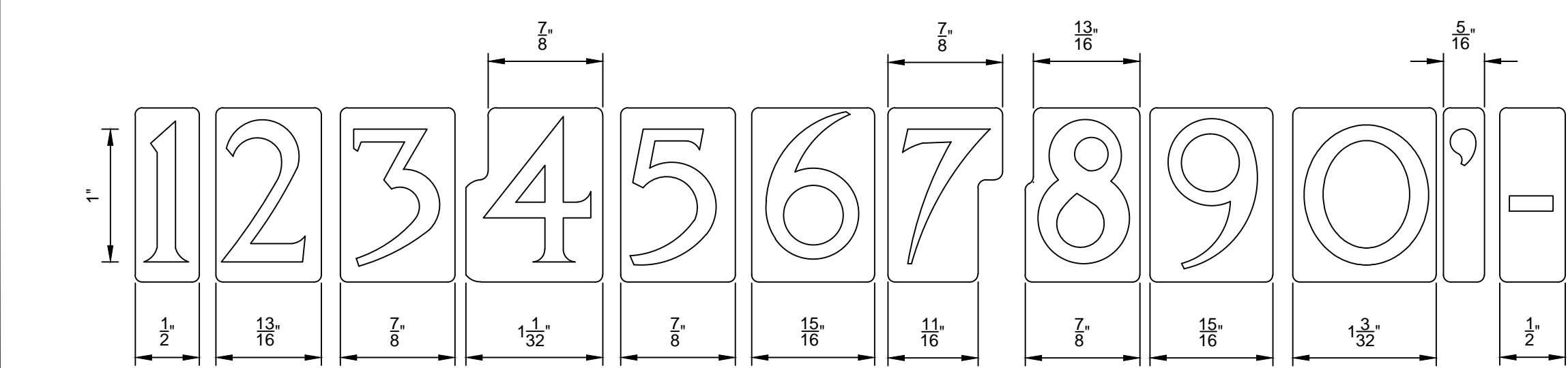
ITEM L-1




ITEM L-1 CONTINUED



ITEM L-2



ITEM L-2 CONTINUED

B		ADDED L5 & L6 & L7 FONTS, UPDATED INSCRIPTION TABLE, ADD SHT 2 & 3	11/26/13	<div>GENERAL NOTES</div> <div>1. FOR MARBLE AND GRANITE NICHE COVERS, SMALL CAPITAL LETTERS WILL BE USED IN THE FOLLOWING MANNER: FOR "C" IN MC DONALD, "AC" IN MAC DONALD, "R" IN JR, "D" IN 2D LIEUTENANT, "ST" IN 1ST LIEUTENANT, ETC. THEY WILL HAVE THE SAME DEPTH OR RISE AS THE LARGE LETTERS. THE SIZE OF THE LETTERING WILL BE ITEM L-3 WHEN USED WITH ITEM L-1 AND ITEM L-4 WHEN USED WITH ITEM L-3.</div> <div>2. THE COTR MAY PROVIDE WRITTEN APPROVAL TO SLIGHTLY REVISE THE CENTER AREA OF LETTERS, NUMBERS, AND OTHER CHARACTERS TO PREVENT BLOWOUT.</div>	<div><div>10</div><div>11</div><div>12</div><div>13</div><div>14</div><div>15</div><div>16</div><div>17</div><div>18</div><div>19</div><div>20</div><div>21</div><div>22</div><div>23</div><div>24</div><div>25</div><div>26</div><div>27</div><div>28</div><div>29</div><div>30</div><div>31</div><div>32</div><div>33</div><div>34</div><div>35</div><div>36</div><div>37</div><div>38</div><div>39</div><div>40</div><div>41</div><div>42</div><div>43</div><div>44</div><div>45</div><div>46</div><div>47</div><div>48</div><div>49</div><div>50</div><div>51</div><div>52</div><div>53</div><div>54</div><div>55</div><div>56</div><div>57</div><div>58</div><div>59</div><div>60</div><div>61</div><div>62</div><div>63</div><div>64</div><div>65</div><div>66</div><div>67</div><div>68</div><div>69</div><div>70</div><div>71</div><div>72</div><div>73</div><div>74</div><div>75</div><div>76</div><div>77</div><div>78</div><div>79</div><div>80</div><div>81</div><div>82</div><div>83</div><div>84</div><div>85</div><div>86</div><div>87</div><div>88</div><div>89</div><div>90</div><div>91</div><div>92</div><div>93</div><div>94</div><div>95</div><div>96</div><div>97</div><div>98</div><div>99</div><div>100</div></div> <div>1" = 1" GRAPHIC SCALE</div>	<div><div></div><div>NATIONAL CEMETERY ADMINISTRATION</div></div>	Drawing Title LETTERS, FONTS, NUMBERS & OTHER CHARACTERS		Project Title GOVERNMENT HEADSTONES, MARKERS, AND NICHE COVERS		Date NOVEMBER 26, 2013			
A		MOVED INCISED DETAILS TO SHT 2, DELETED EMBLEM 50, ADDED ACCENT MARKS & CHARACTERS	03-01-07				Approved: Director, Memorial Programs Service		Marker Type REFER TO DEPTH CHART		Checked KEE/KS	Drawn MLT SYSTEMS	DRAWING NO. A-LFN&OC-1	
-		SUPERSEDES DRAWING ID-4 DATED 12-2-99	06/05/03				Signed		Location -		Digital File A-LFN&OC-1.DWG 24" x 36" SHEET		Sheet 1 Of 3	
Revisions			Date				Approved: Chief of Operations, Memorial Programs Service							