

# GENERAL SHEET NOTES

## SHEET KEYNOTES

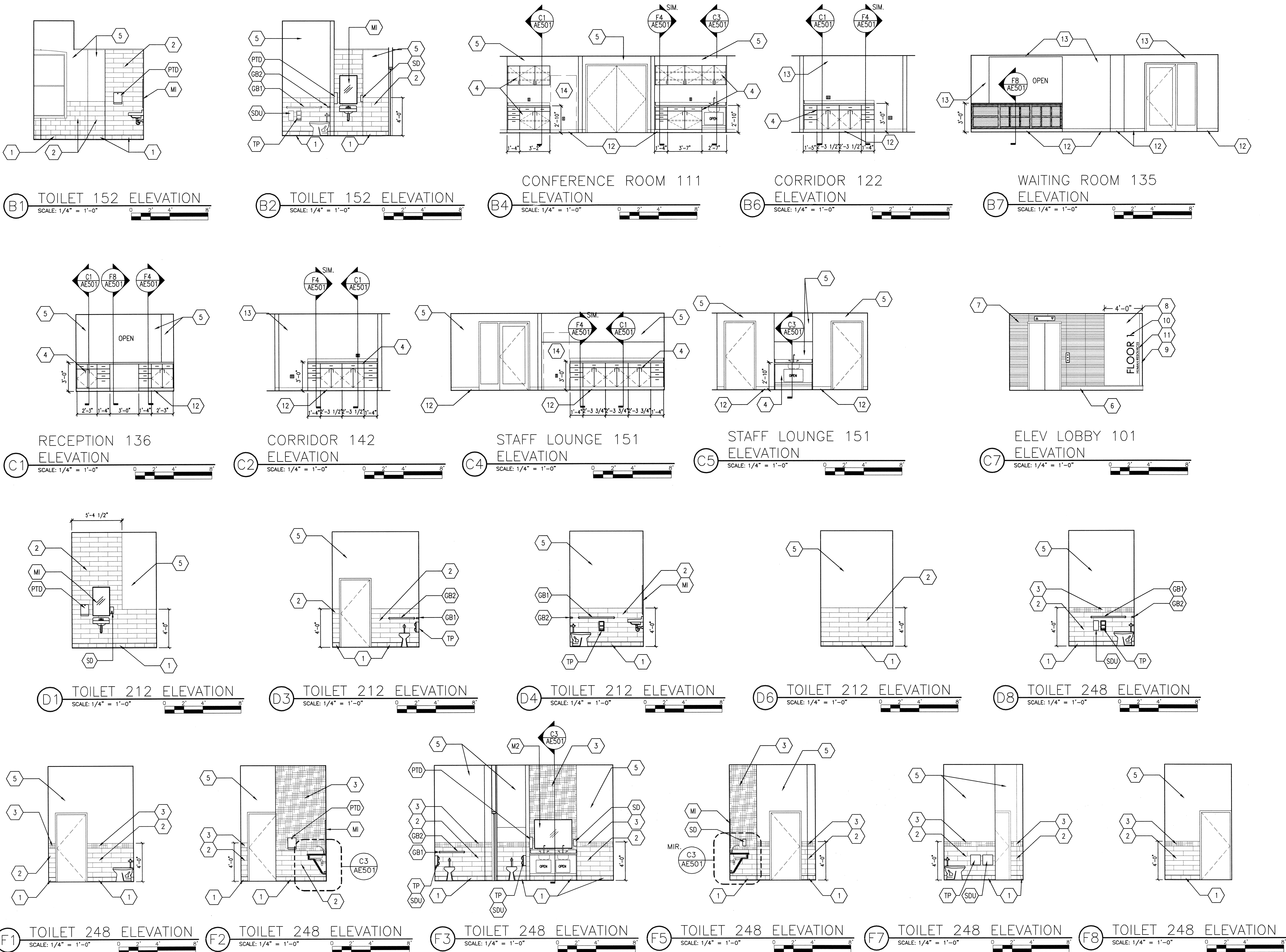
1. BASE PT-1, SEE FINISH SCHEDULE
2. WALL TILE PT-6, SEE FINISH SCHEDULE
3. WALL TILE PT-7, SEE FINISH SCHEDULE
4. PLASTIC LAMINATE CASEWORK, TYPICAL
5. PAINTED GWB (SEE FINISH SCHEDULE FOR TYPE)
6. WOOD BASE WB, SEE FINISH SCHEDULE
7. WALL TILE PT-8, STACK BOND, SEE FINISH SCHEDULE
8. WALL TILE PT-9, SEE FINISH SCHEDULE
9. CORNER GUARD CG-3, SEE FINISH SCHEDULE
10. BURNISHED ALUMINUM, SURFACE APPLIED DIMENSIONAL LETTERS, 9" HIGH, CENTURY GOTHIC FONT, TEXT: "FLOOR 1"
11. BURNISHED ALUMINUM, SURFACE APPLIED DIMENSIONAL LETTERS, 3" HIGH, CENTURY GOTHIC FONT, TEXT: "HUMAN RESOURCES"
12. RESILIENT WALL BASE, SEE FINISH SCHEDULE
13. VINYL WALL COVERING, SEE FINISH SCHEDULE
14. REFRIGERATOR (NOT IN CONTRACT)

## TOILET ACCESSORY LEGEND

- GB1 GRAB BAR - 42 INCH  
GB2 GRAB BAR - 36 INCH  
TP TOILET PAPER DISPENSER  
SDU SANITARY DISPOSAL UNIT  
PTD PAPER TOWEL DISPENSER (VA PROVIDED/GC INSTALLED)  
MI MIRROR - 18 INCH WIDE, 36 INCH HIGH  
M2 MIRROR - 48 INCH WIDE, 36 INCH HIGH  
SD SOAP DISPENSER (VA PROVIDED/GC INSTALLED)

## SYMBOLS LEGEND

- EXISTING WALL, DOOR, WINDOW, MILLWORK, FIXTURE OR OTHER FIXTURE OR ASSEMBLY TO BE REMOVED.
- ===== EXISTING WALL, DOOR, WINDOW, MILLWORK, FIXTURE OR OTHER FIXTURE OR ASSEMBLY TO REMAIN.
- ===== NEW WALL
- 2 HOUR RATED FIRE BARRIER
- 1 HOUR RATED FIRE BARRIER
- PROJECT LIMITS OF WORK
- NO PIPING OR DUCTWORK SHALL BE ROUTED THROUGH ELECTRICAL AND/OR DATA ROOMS.
- ===== NEW CONCRETE
- ===== EXISTING AREAS OF RAISED CONCRETE TO REMAIN
- ===== EXISTING CONCRETE TO BE REMOVED AND REPAIRED



REVISION NO.	REVISION DESCRIPTION



Department of Veterans Affairs  
James H Quillen  
VA Medical Center  
Dogwood Ave.  
Mountain Home, TN 37684



Architect/Engineer Address  
**HARRELL**  
DESIGN GROUP, P.C.  
8016 TOWER POINT DRIVE  
CHARLOTTE, NC 28227  
P 704.814.1320  
F 704.321.0833  
WWW.HARRELLGROUP.COM  
COPYRIGHT © 2015 HARRELL DESIGN GROUP, P.C.  
HDC PROJECT # 14009

Recommended Approvals:	
1. MEDICAL DIRECTOR	6. OPERATIONS SERVICE LINE MANAGER
2. ASSOCIATE DIRECTOR	7. INFECTION CONTROL MANAGER
3. CHIEF OF STAFF	8. SAFETY MANAGER
4. ASSOC. DIRECTOR	9. GENERAL ENGINEER
5. SERVICE LINE MGRS.	10. COR

Drawing Title  
**TOILET PLANS AND ELEVATIONS**  
CONSTRUCTION DOCUMENTS  
FULLY SPRINKLERED

Project Title  
**RENOVATE BUILDING 8 FOR ENVIRONMENT AND CONDITION DEFICIENCIES**  
Drawn GG  
Building Number 8  
AutoCAD File Name  
Checked  
Reviewed  
Const. Contract No.

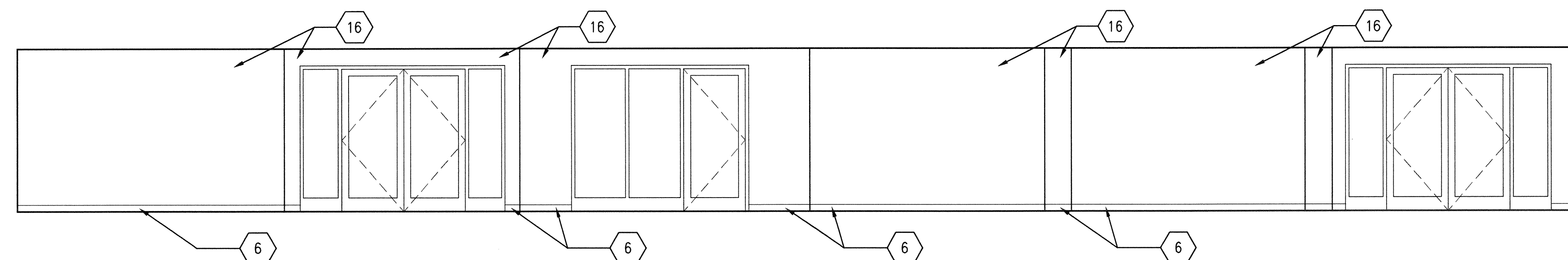
Date  
OCTOBER 26, 2015  
Project Number  
621-14-135  
DRAWING No.  
**AI106**  
DWG 90 of 208



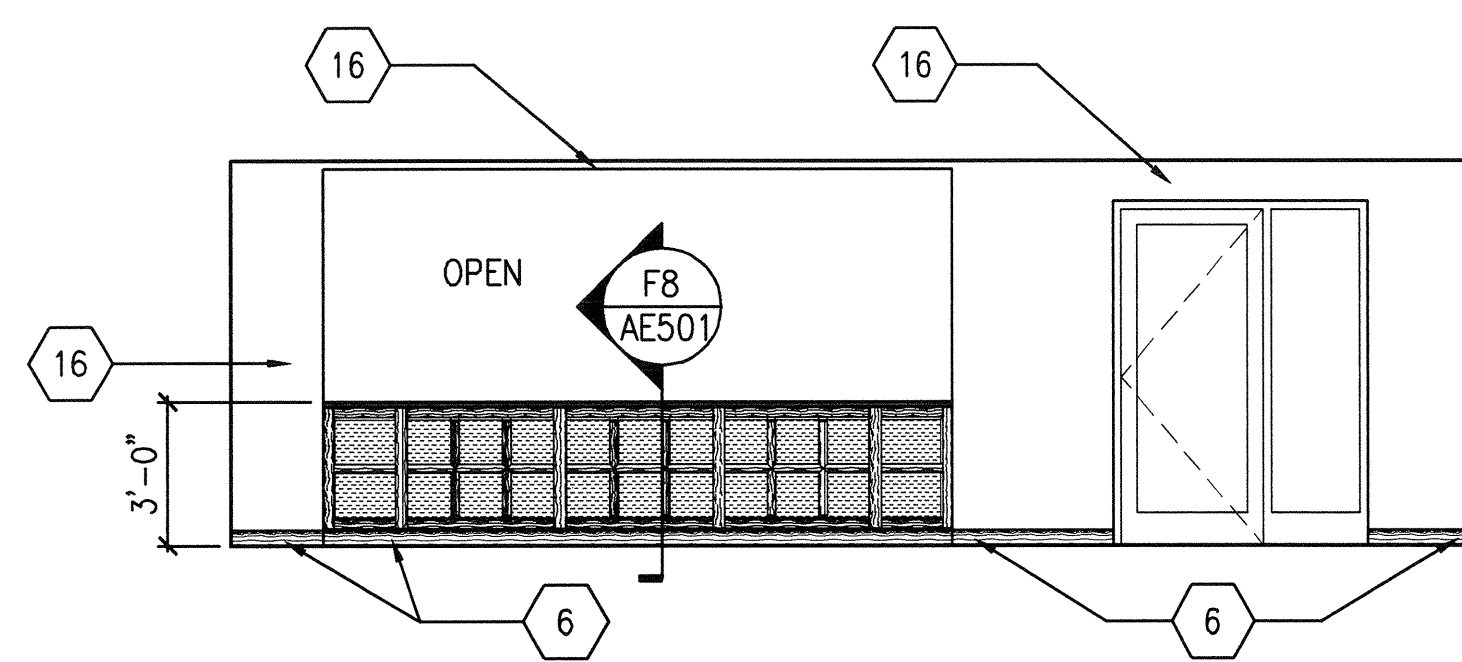




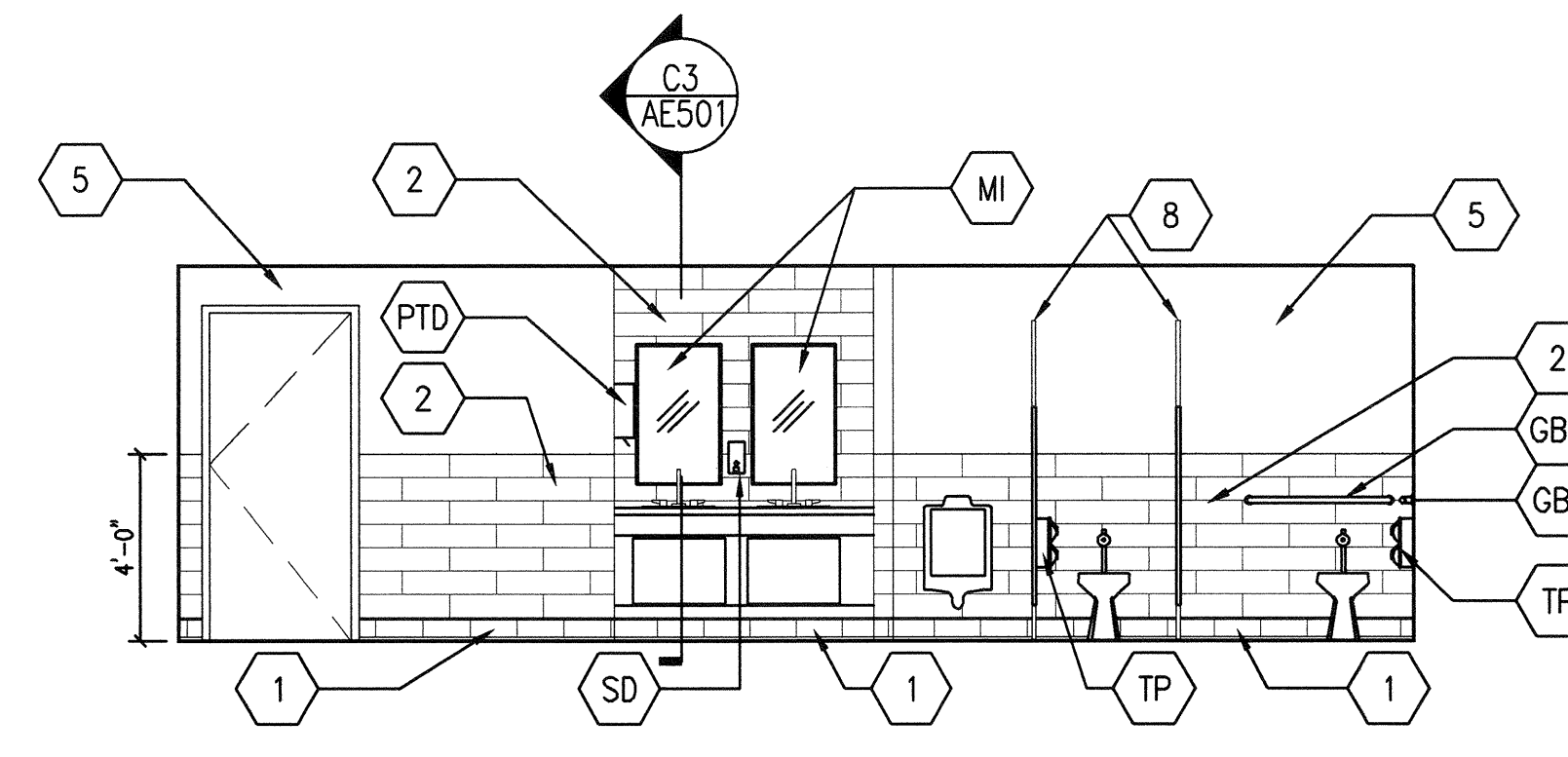




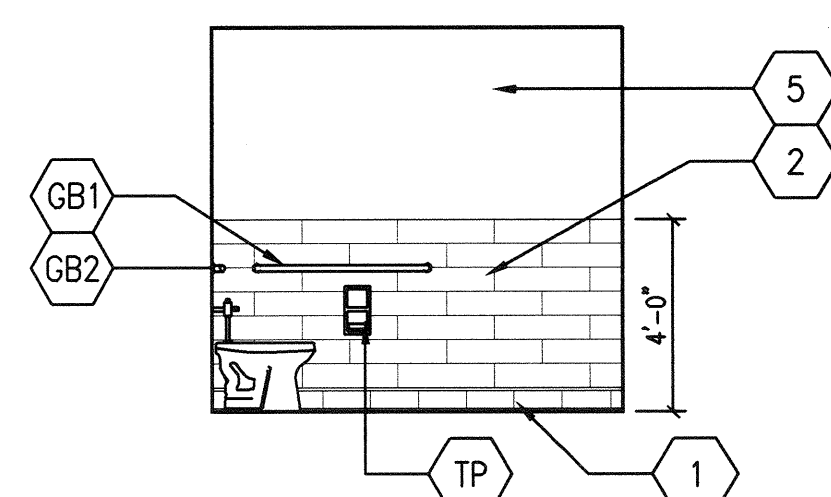
CORRIDOR 220 ELEVATION



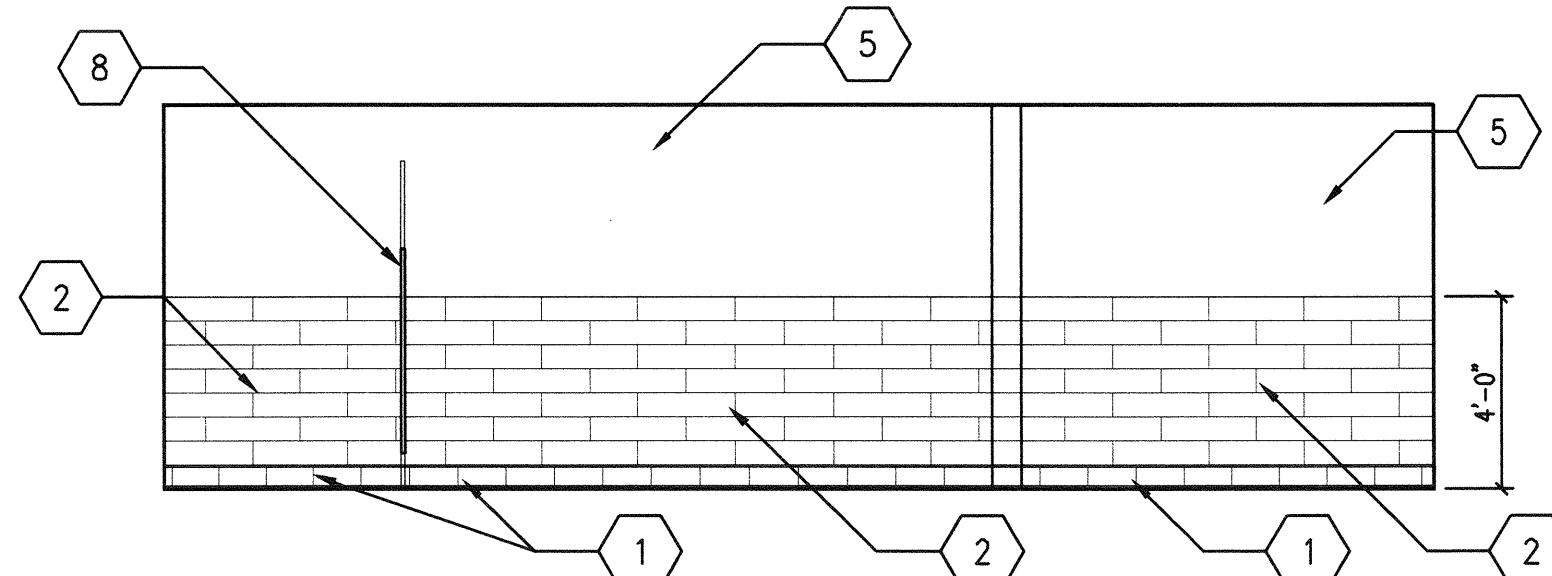
WAITING/LOBBY 201  
ELEVATION



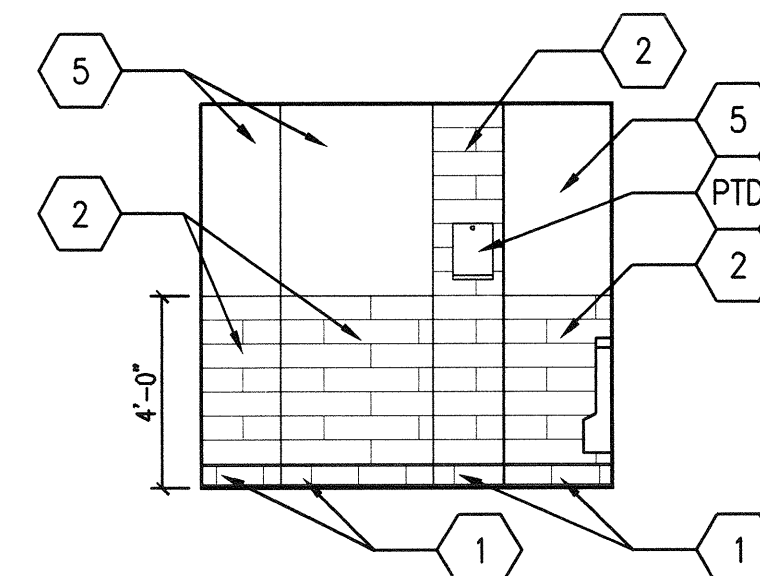
TOILET 360 ELEVATION



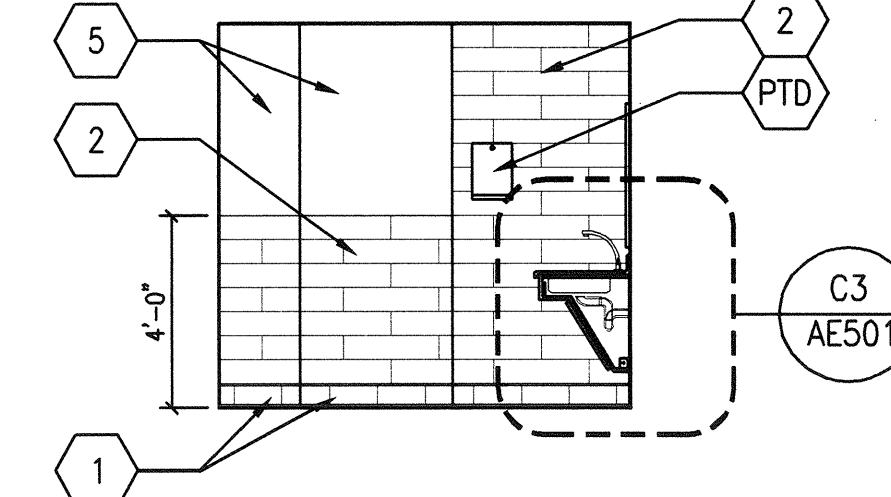
(E3) TOILET 360 ELEVATION



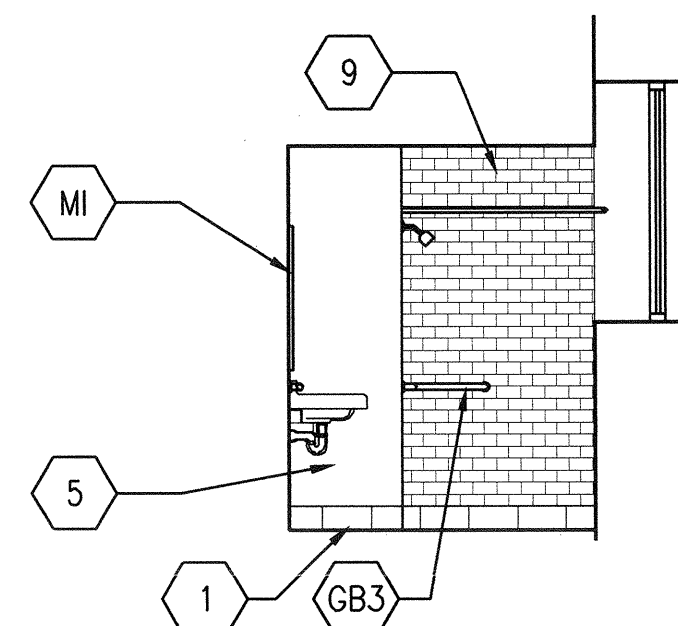
**E4** TOILET 360 ELEVATION



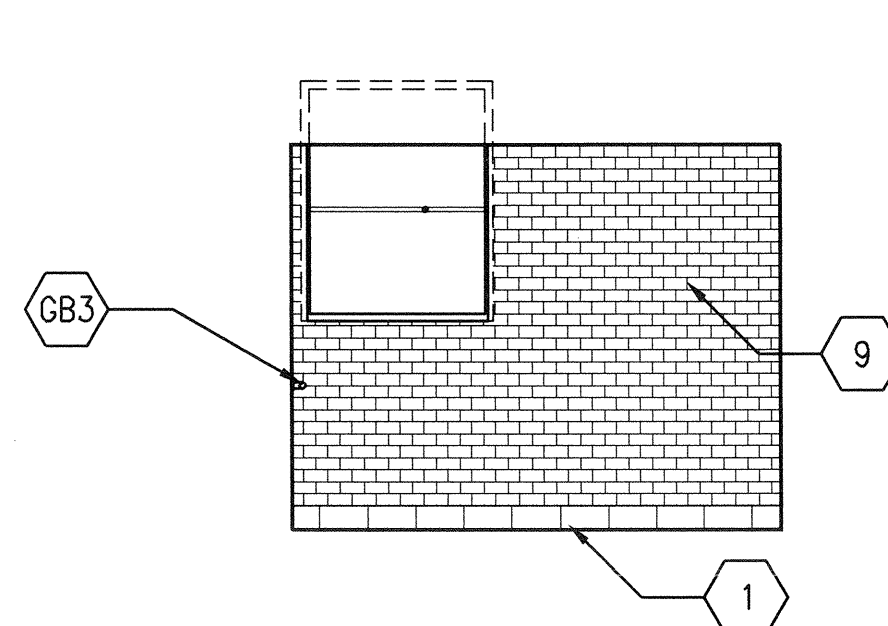
E6 TOILET 360 ELEVATION



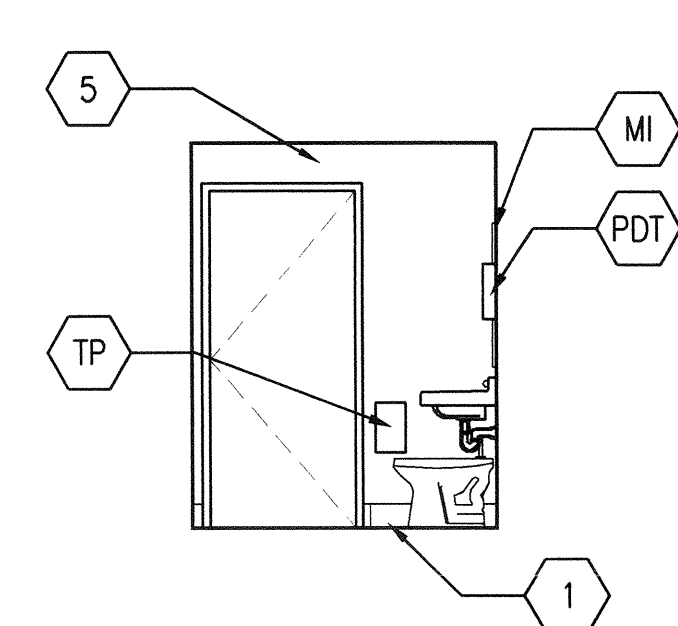
E8 TOILET 360 ELEVATION



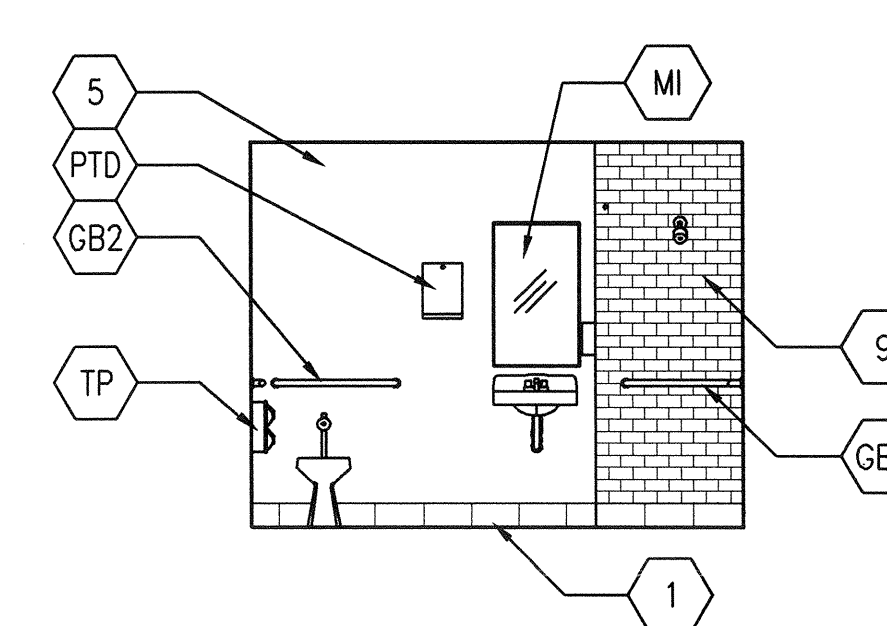
(F3) TOILET B017B ELEVATION




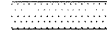




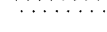
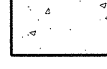
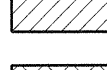
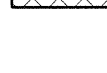
(F5) TOILET B017B ELEVATION



F7 TOILET B017B ELEVATION

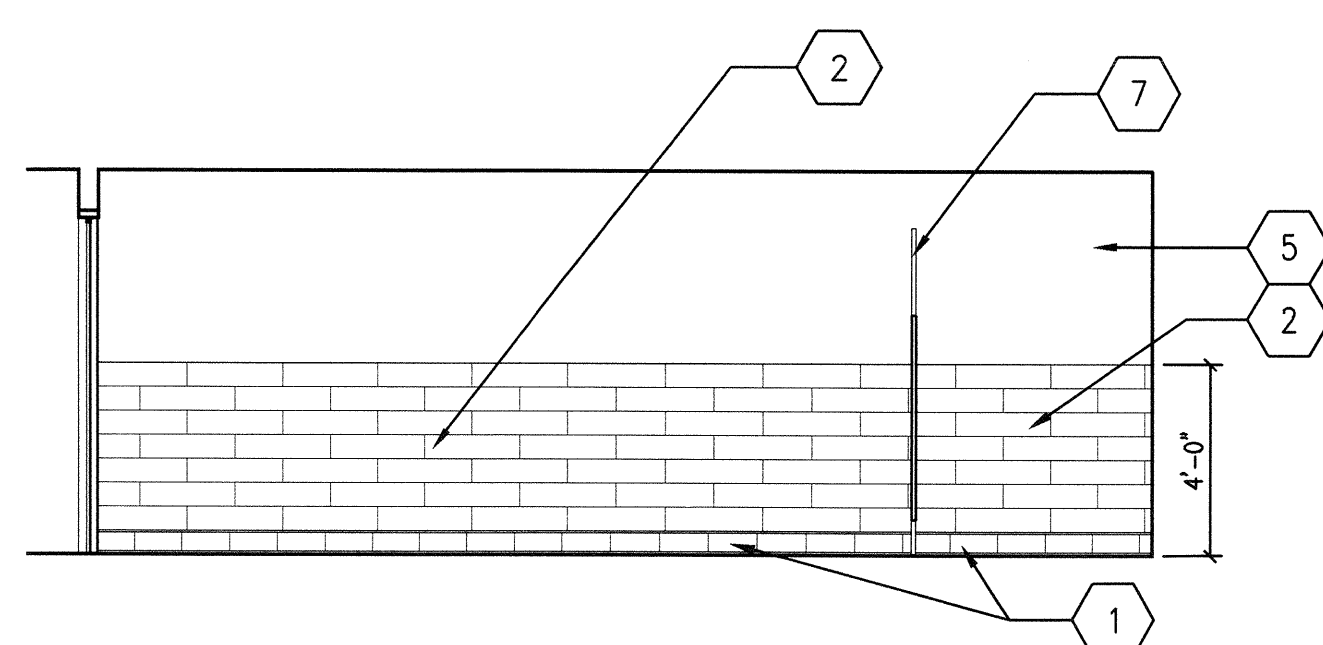


F8 TOILET B017B ELEVATION

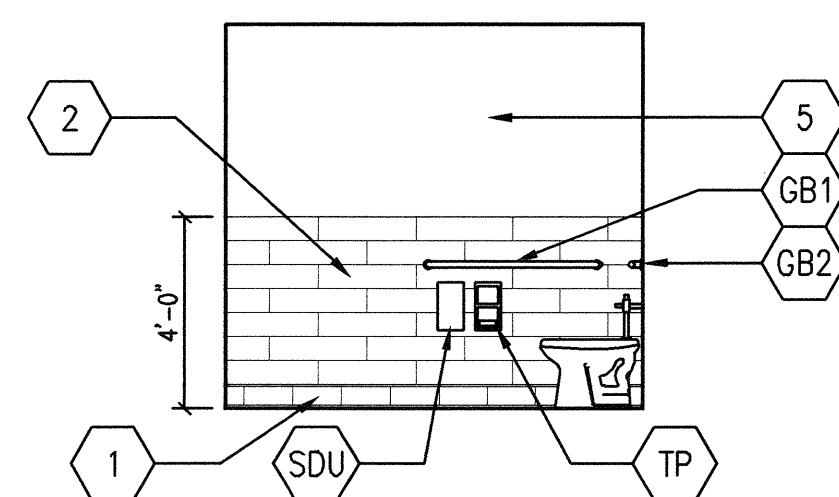
	EXISTING WALL, DOOR, WINDOW, MILLWORK FIXTURE OR OTHER FIXTURE OR ASSEMBLY <u>TO BE REMOVED.</u>
	EXISTING WALL, DOOR, WINDOW, MILLWORK FIXTURE OR OTHER FIXTURE OR ASSEMBLY <u>TO REMAIN.</u>
	NEW WALL
	2 HOUR RATED FIRE BARRIER
	1 HOUR RATED FIRE BARRIER
	PROJECT LIMITS OF WORK
	NO PIPING OR DUCTWORK SHALL BE ROUTED THROUGH ELECTRICAL AND/OR DATA ROOMS.
	NEW CONCRETE
	EXISTING AREAS OF RAISED CONCRETE TO REMAIN
	EXISTING CONCRETE TO BE REMOVED AND REPAIRED


Veterans Affairs

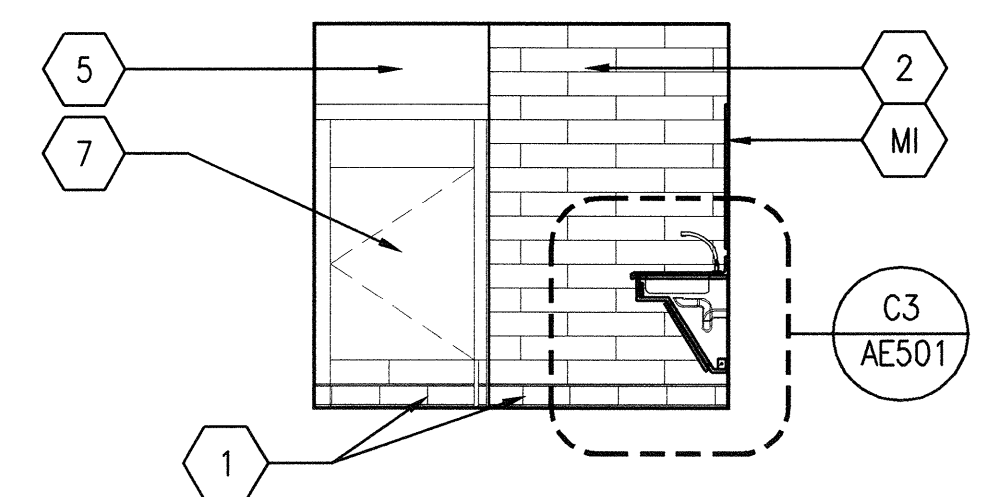




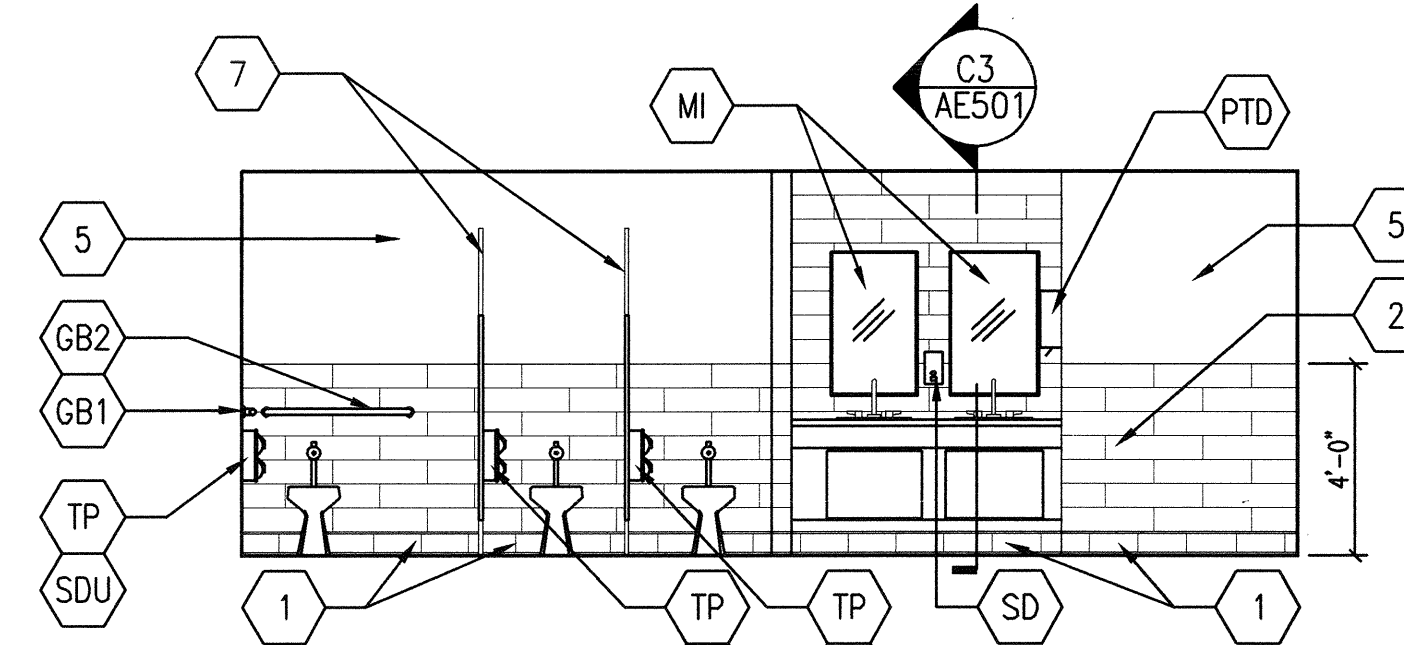
A1 TOILET 359 ELEVATION  
SCALE: 1/4" = 1'-0"



A3 TOILET 359 ELEVATION  
SCALE: 1/4" = 1'-0" 



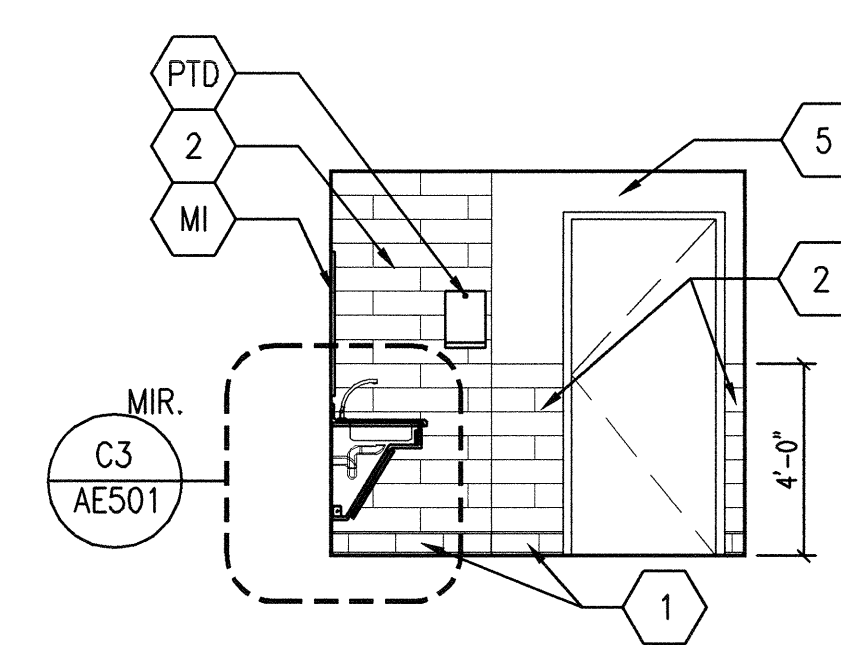
(A4) TOILET 359 ELEVATION  
SCALE: 1/4" = 1'-0"



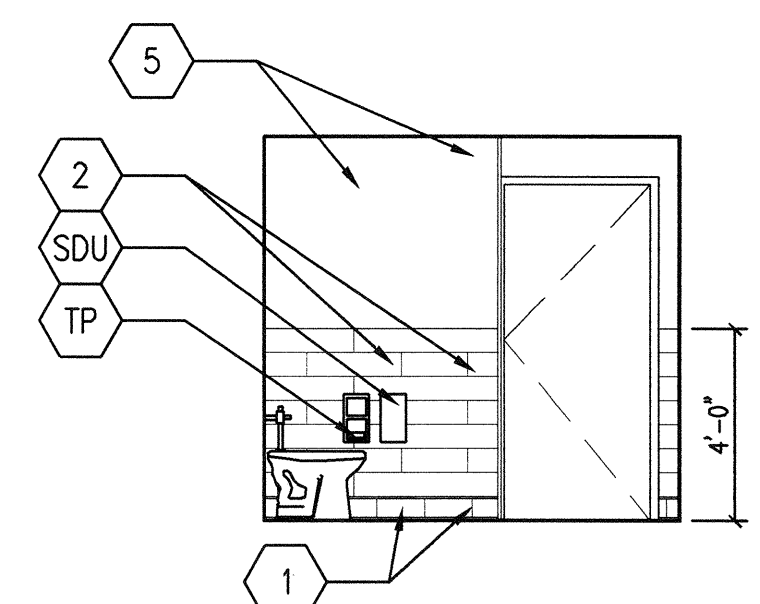
A6 TOILET 359 ELEVATION

SCALE: 1/4" = 1'-0"

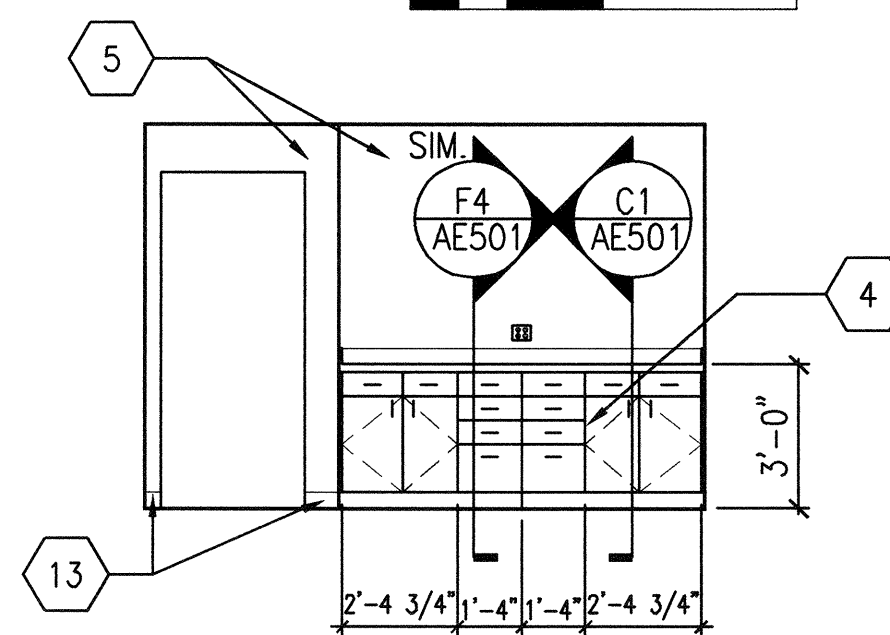
0 2' 4'



A8 TOILET 359 ELEVATION  
SCALE: 1/4" = 1'-0"



(B1) TOILET 359 ELEVATION

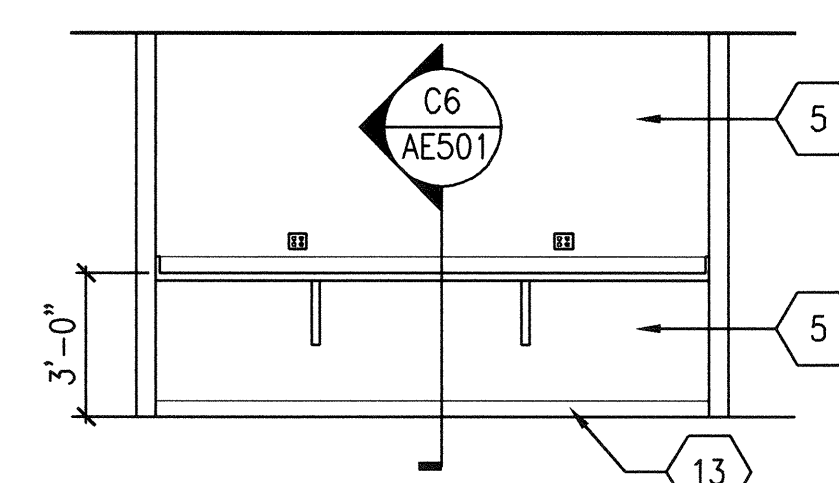


WORK ROOM 311  
ELEVATION

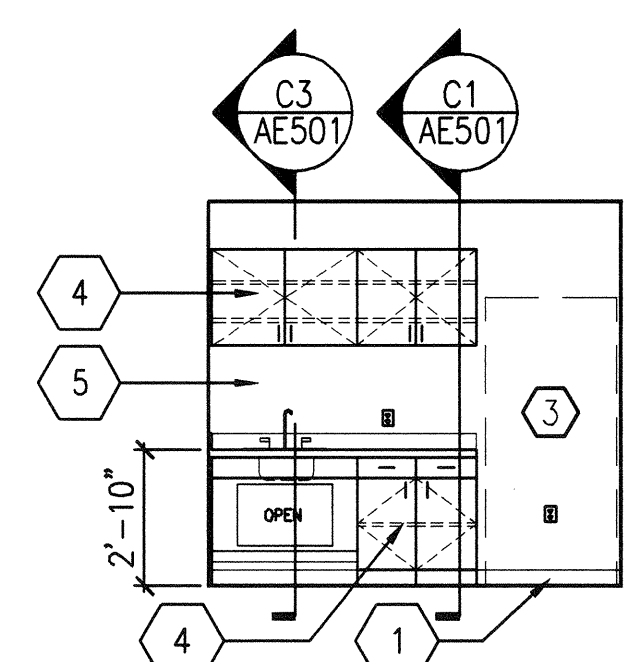
B4

SCALE: 1/4" = 1'-0"

0 2' 4'



B8 COPY 315 ELEVATION  
SCALE: 1/4" = 1'-0"

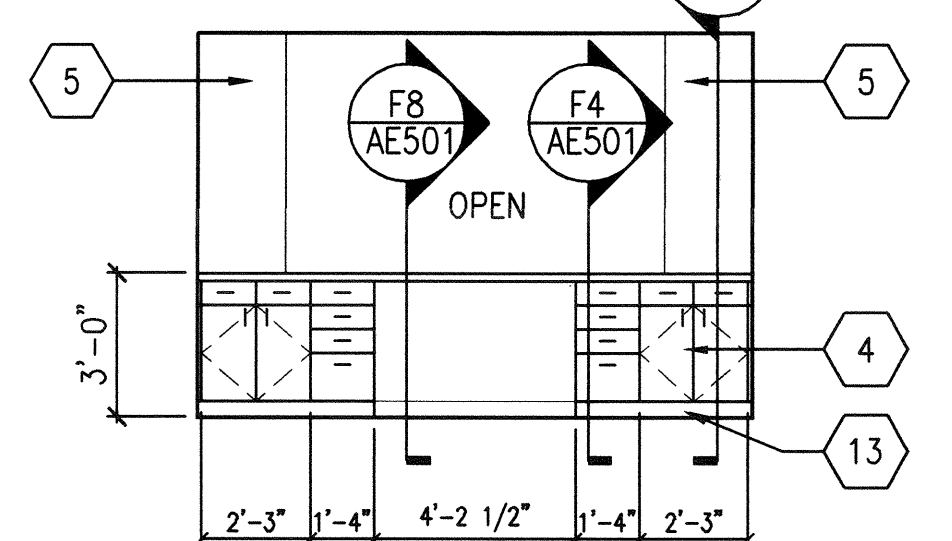


BREAK ROOM 335  
ELEVATION

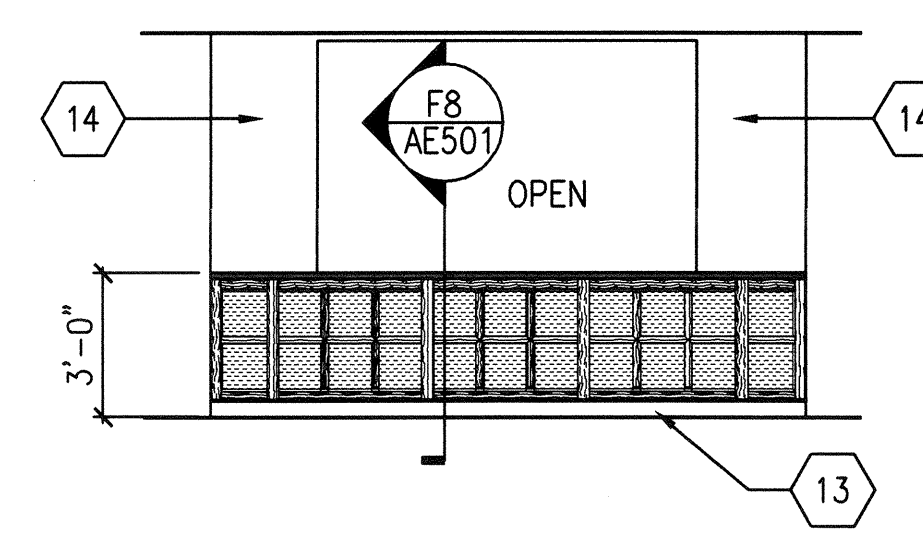
(E1)

SCALE: 1/4" = 1'-0"

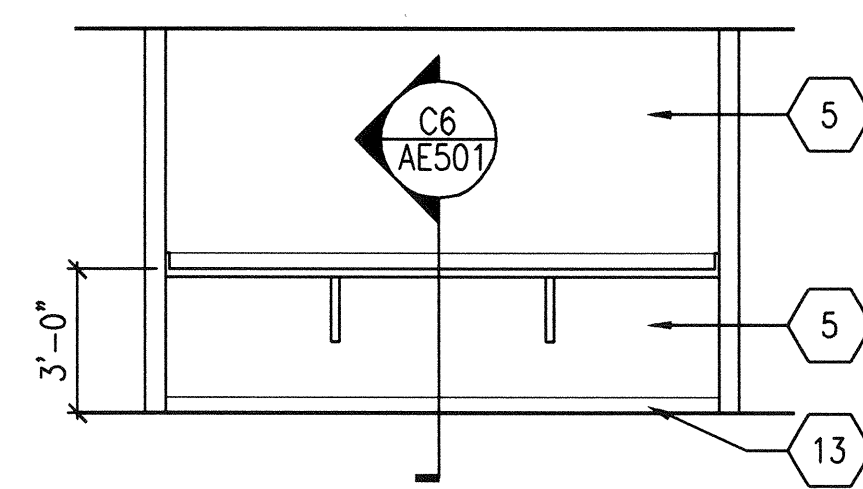
0 2' 4' 8'




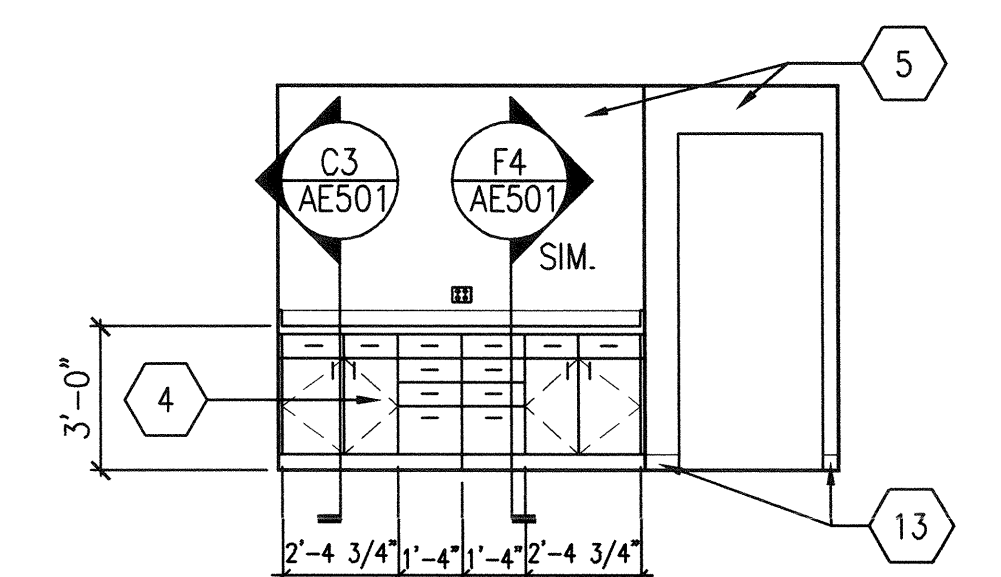
C4 RECEPTION 318 ELEVATION  
SCALE: 1/4" = 1'-0"



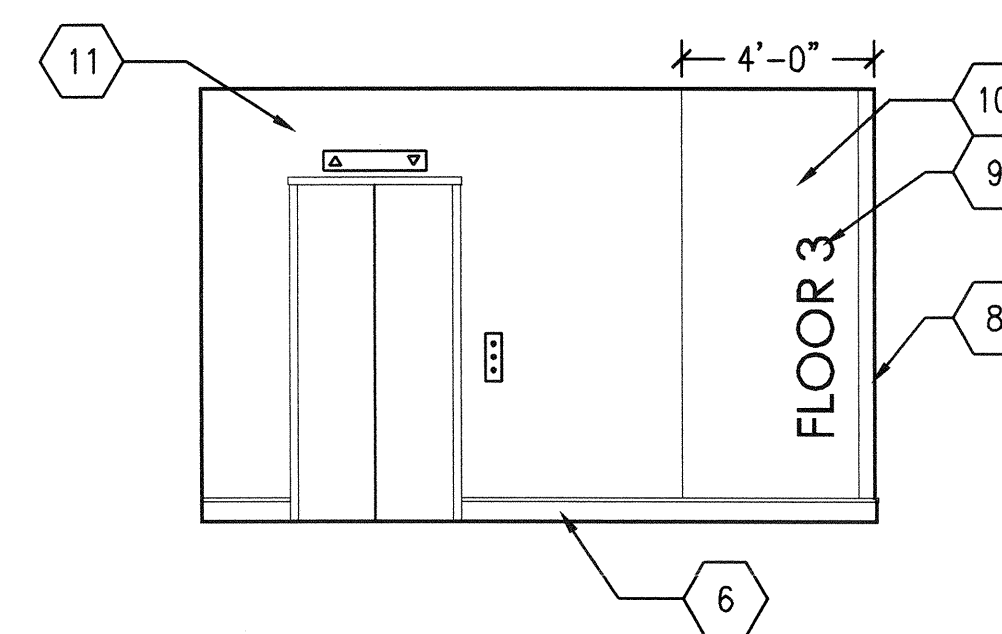
C6 CORRIDOR 319 ELEVATION  
SCALE: 1/4" = 1'-0" 0 2' 4'





F4 WORK ROOM 352 ELEVATION  
SCALE: 1/4" = 1'-0"



F6 CORRIDOR 301 ELEVATION  
SCALE: 1/4" = 1'-0"

### GENERAL SHEET NOTES







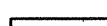
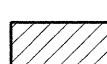


SHEET KEYNOTES

1. BASE PT-1, SEE FINISH SCHEDULE
2. WALL TILE PT-6, SEE FINISH SCHEDULE
3. REFRIGERATOR, NIC
4. PLASTIC LAMINATE CASEWORK
5. PAINTED GWB (SEE FINISH SCHEDULE FOR TYPE)
6. WOOD BASE WB, SEE FINISH SCHEDULE
7. TOILET PARTITIONS, TYPICAL
8. CORNER GUARD CG-3, SEE FINISH SCHEDULE
9. BURNISHED ALUMINUM, SURFACE APPLIED DIMENSIONAL LETTERS, 9" HIGH, CENTURY GOTHIC FONT, TEXT: "FLOOR 3"
10. WALL TILE PT-8, STACK BOND, SEE FINISH SCHEDULE
11. VINYL WALL COVERING VWC-6, SEE FINISH SCHEDULE
12. VINYL WALL COVERING VWC-5, SEE FINISH SCHEDULE
13. RESILIENT WALL BASE, SEE FINISH SCHEDULE
14. VINYL WALL TILE, SEE FINISH SCHEDULE

### TOILET ACCESSORY LEGEND

- |     |  |
|-----|--|
| GB1 | GRAB BAR - 42 INCH                               |
| GB2 | GRAB BAR - 36 INCH                               |
| TP  | TOILET PAPER DISPENSER                           |
| SDU | SANITARY DISPOSAL UNIT                           |
| PTD | PAPER TOWEL DISPENSER (VA PROVIDED/GC INSTALLED) |
| MI  | MIRROR - 18 INCH WIDE, 36 INCH HIGH              |
| SD  | SOAP DISPENSER (VA PROVIDED/GC INSTALLED)        |

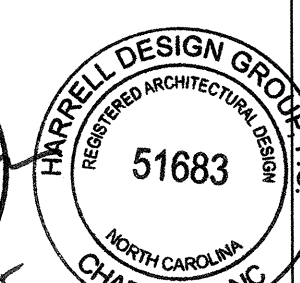
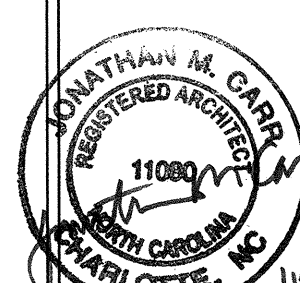
## SYMBOLS LEGEND

- |   |  |
|---|--|
|  | EXISTING WALL, DOOR, WINDOW, MILLWORK<br>FIXTURE OR OTHER FIXTURE OR ASSEMBLY<br><u>TO BE REMOVED.</u> |
|  | EXISTING WALL, DOOR, WINDOW, MILLWORK<br>FIXTURE OR OTHER FIXTURE OR ASSEMBLY<br><u>TO REMAIN.</u>     |
|  | NEW WALL   |
|  | 2 HOUR RATED FIRE BARRIER  |
|  | 1 HOUR RATED FIRE BARRIER  |
|  | PROJECT LIMITS OF WORK   |
|  | NO PIPING OR DUCTWORK SHALL<br>BE ROUTED THROUGH ELECTRICAL<br>AND/OR DATA ROOMS.                      |
|  | NEW CONCRETE   |
|  | EXISTING AREAS OF RAISED<br>CONCRETE TO REMAIN   |
|  | EXISTING CONCRETE TO BE REMOVED<br>AND REPAIRED  |


<i>REVISION NO.</i>	<i>REVISION DESCRIPTION</i>	
<b>Revisions</b>		<b>By Date</b>



Department of Veterans Affairs  
James H Quillen  
VA Medical Center  
Dogwood Ave.  
Mountain Home, TN 37684



Architect/Engineer Address



**HARRELL**  
• DESIGN GROUP, P.C.

formerly HARRELL, SALTRICK & HOPPE

8016 TOWER POINT DRIVE P 704.814.13  
CHARLOTTE, NC 28227 F 704.321.08

---

WWW.HARRELLDG.COM

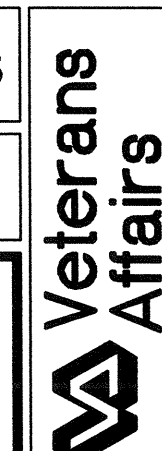
COPYRIGHT © 2015 HARRELL DESIGN GROUP, INC.  
HDG PROJECT # 14009

Recommended Approvals:	
1. MEDICAL DIRECTOR	6. OPERATIONS SERVICE LINE MANAGER
2. ASSOCIATE DIRECTOR	7. INFECTION CONTROL MANAGER
3. CHIEF OF STAFF	8. SAFETY MANAGER
4. ASSOC. DIRECTOR	9. GENERAL ENGINEER
5. SERVICE LINE MGRS.	10. COR

Drawing Title	TOILET PLANS AND ELEVATIONS
CONSTRUCTION DOCUMENTS	
FULLY SPRINKLERED	

Project Title	
RENOVATE BUILDING 8 FOR ENVIRONMENT AND CONDITION DEFICIENCIES	
Drawn	Building Number
GG	8
Checked	Reviewed

Date	OCTOBER 26, 2015
Project Number	621-14-135
DRAWING No.	AI109



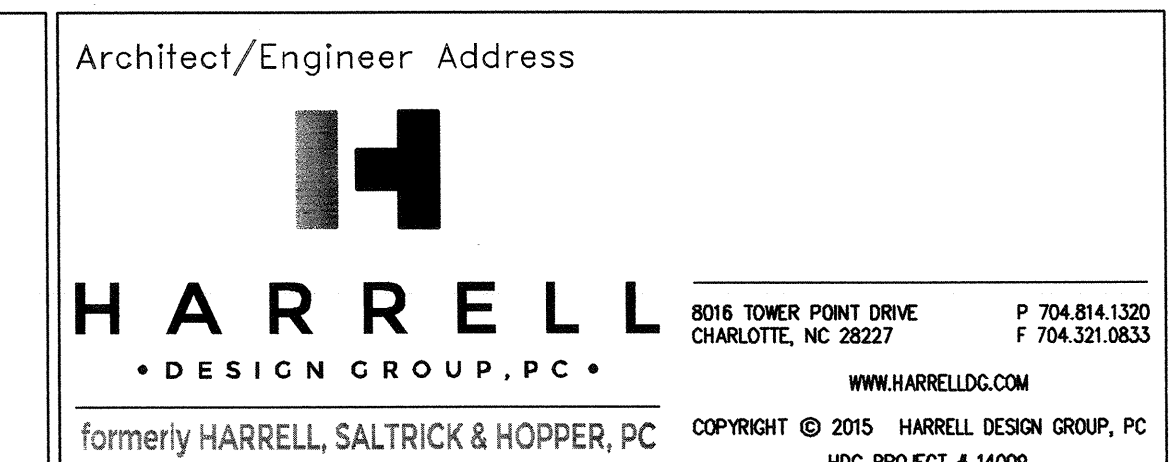
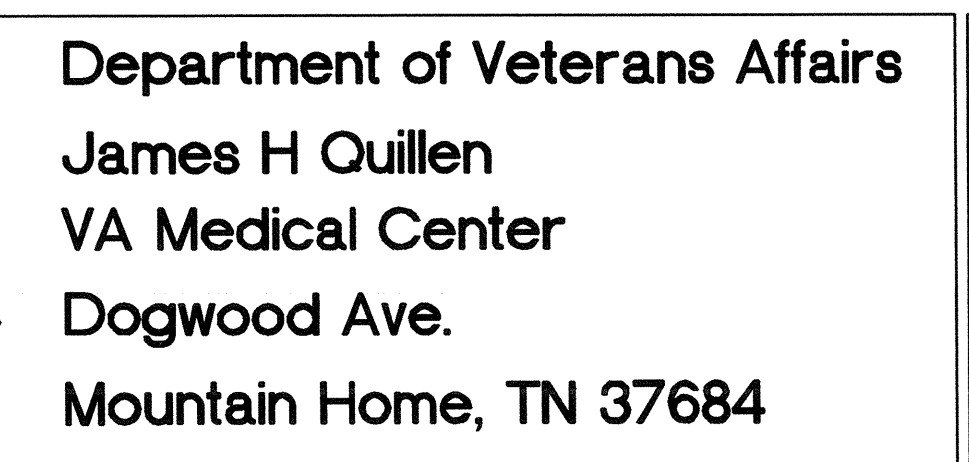


C1 FIRE ALARM INPUT/OUTPUT MATRIX  
SCALE: NONE

- [illegible]

**ALTERNATE NOTE**

REFER TO SHEETS ALT-FA100 AND ALT-FA103 FOR WORK TO BE DONE ACCORDING TO ALTERNATES #4 & #5. THE CONTROL PANEL SHALL REMAIN FULLY EQUIPPED TO ACCOMMODATE FULL OCCUPANCY OPERATION REGARDLESS OF ALTERNATES ACCEPTED.

[illegible]

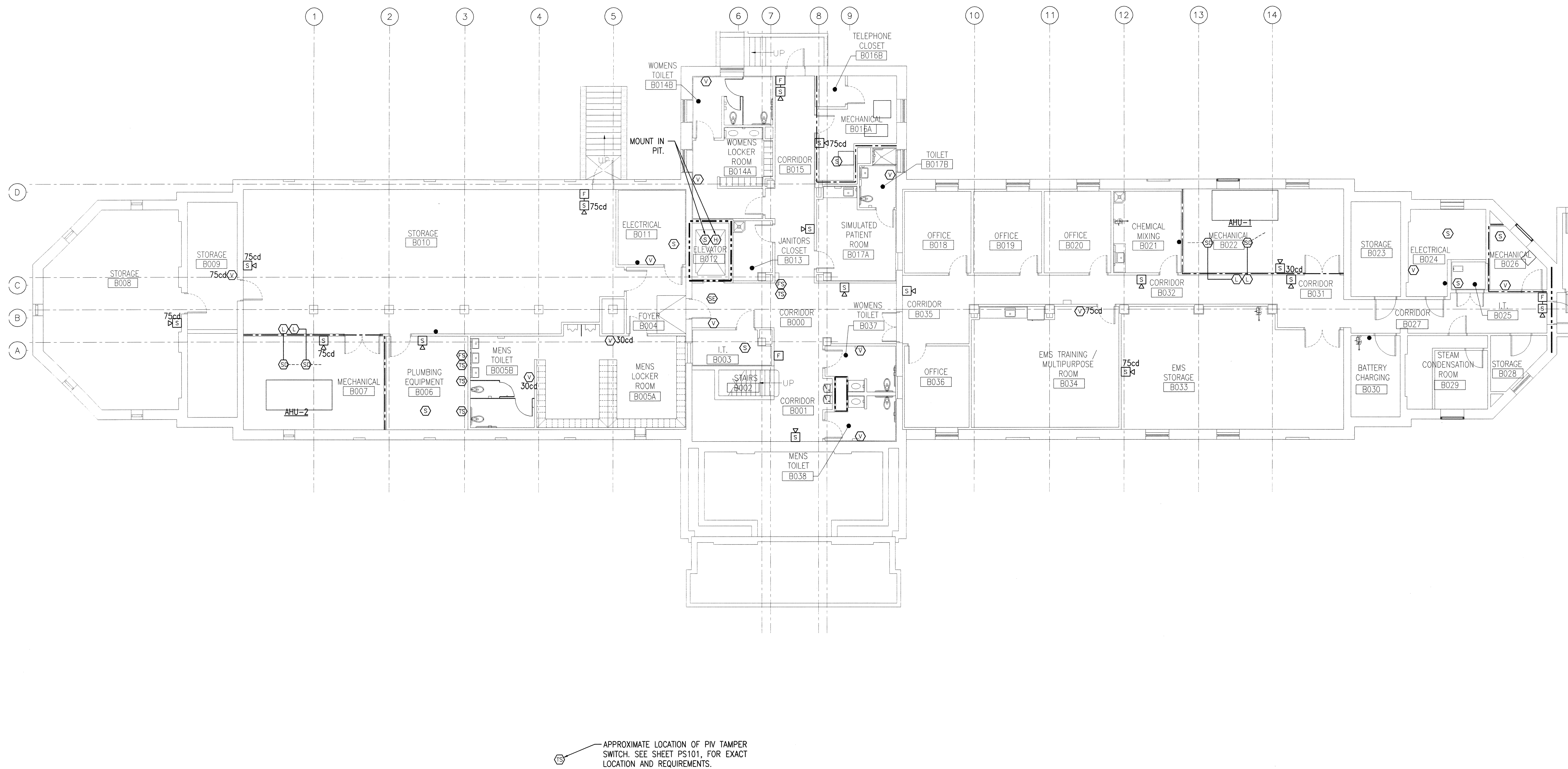
Drawing Title
FIRE ALARM MATRIX, RISER, LEGEND AND NOTES
CONSTRUCTION DOCUMENTS
FULLY SPRINKLERED

Date <b>OCTOBER 26, 2015</b>
Project Number <b>621-14-135</b>
DRAWING No. <b>FA001</b> DWG <u>84</u> of <u>208</u>





three inches = one foot  
one and one half inches = one foot  
one inch = one foot  
three quarters inch = one foot  
one half inch = one foot  
one quarter inch = one foot  
one eighth inch = one foot



**D1 BASEMENT FLOOR PLAN - FIRE ALARM**  
SCALE: 1/8" = 1'-0"

**DEMOLITION NOTE**  
DEMOLISH THE EXISTING FIRE ALARM SYSTEM IN ITS ENTIRETY. WRAP AND/OR PACKAGE EQUIPMENT AND DEVICES AND TURN ALL OVER TO THE GOVERNMENT.

**GENERAL SHEET NOTES**

- A. ALL VISUAL DEVICE CANDELA RATINGS TO BE 15cd. UNLESS OTHERWISE NOTED.
- B. ALL CEILING MOUNTED SMOKE DETECTORS SHALL BE INSTALLED A MINIMUM OF 3 FEET AWAY FROM ANY HVAC SUPPLY AND RETURN DIFFUSERS.
- C. SEE SHEET FA001 FOR FIRE ALARM SYMBOLS AND LEGEND.

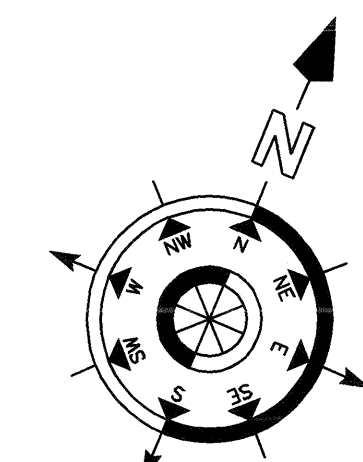
**SHEET KEYNOTES**

**ALTERNATE NOTE:**

- 1. REFER TO SHEET ALT-EY100 FOR ALTERNATE WORK FOR THIS FLOOR.

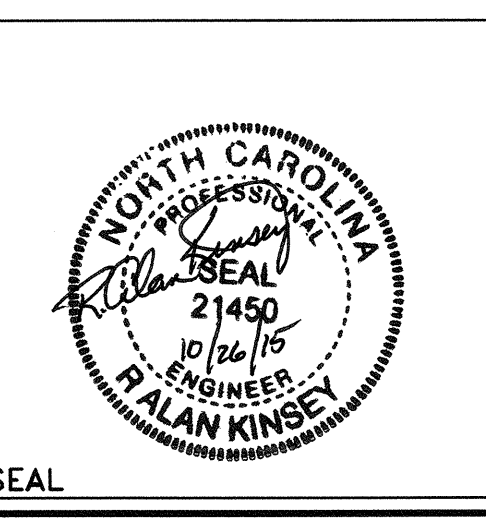
**SYMBOLS LEGEND**

- EXISTING WALL, DOOR, WINDOW, MILLWORK, FIXTURE OR OTHER FIXTURE OR ASSEMBLY TO BE REMOVED.
- EXISTING WALL, DOOR, WINDOW, MILLWORK, FIXTURE OR OTHER FIXTURE OR ASSEMBLY TO REMAIN.
- NEW WALL
- 2 HOUR RATED FIRE BARRIER
- 1 HOUR RATED FIRE BARRIER
- PROJECT LIMITS OF WORK
- NO PIPING OR DUCTWORK SHALL BE ROUTED THROUGH ELECTRICAL AND/OR DATA ROOMS.
- NEW CONCRETE
- EXISTING AREAS OF RAISED CONCRETE TO REMAIN
- EXISTING CONCRETE TO BE REMOVED AND REPAIRED



REVISION NO.	REVISION DESCRIPTION	By	Date

**Department of Veterans Affairs**  
**James H Quillen**  
**VA Medical Center**  
**Dogwood Ave.**  
**Mountain Home, TN 37684**



Architect/Engineer Address  
**HARRELL**  
DESIGN GROUP, P.C.  
1816 TOWER POINT DRIVE, CHARLOTTE, NC 28227  
P 704.814.1320 F 704.321.0833  
COPYRIGHT © 2015 HARRELL DESIGN GROUP, PC  
HDC PROJECT # 14009

Recommended Approvals:	
1. MEDICAL DIRECTOR	6. OPERATIONS SERVICE LINE MANAGER
2. ASSOCIATE DIRECTOR	7. INFECTION CONTROL MANAGER
3. CHIEF OF STAFF	8. SAFETY MANAGER
4. ASSOC. DIRECTOR	9. GENERAL ENGINEER
5. SERVICE LINE MGRS.	10. COR

Drawing Title <b>BASEMENT FLOOR PLAN - FIRE ALARM</b>		Project Title <b>RENOVATE BUILDING 8 FOR ENVIRONMENT AND CONDITION DEFICIENCIES</b>		Date <b>OCTOBER 26, 2015</b>
CONSTRUCTION DOCUMENTS		Drawn WAO	Building Number 8	Project Number 621-14-135
FULLY SPRINKLERED		Checked HJF	Reviewed FAC	AutoCAD File Name
			Const. Contract No.	DRAWING No. <b>FA100</b> DWG 85 of 208

**Veterans Affairs**



GENERAL SHEET NOTES

- A. ALL VISUAL DEVICE CANDELA RATINGS TO BE 15cd. UNLESS OTHERWISE NOTED.
- B. ALL CEILING MOUNTED SMOKE DETECTORS SHALL BE INSTALLED A MINIMUM OF 3 FEET AWAY FROM ANY HVAC SUPPLY AND RETURN DIFFUSERS.
- C. SEE SHEET FA001 FOR FIRE ALARM SYMBOLS AND LEGEND.

ALTERNATE NOTE:

1. WORK SHOWN ON THIS PLAN IS WORK TO BE DONE UNDER ALTERNATE #4. REFER TO SHEET G1001 FOR DESCRIPTION.

SHEET KEYNOTES

SYMBOLS LEGEND

- EXISTING WALL, DOOR, WINDOW, MILLWORK, FIXTURE OR OTHER FIXTURE OR ASSEMBLY TO BE REMOVED.
- EXISTING WALL, DOOR, WINDOW, MILLWORK, FIXTURE OR OTHER FIXTURE OR ASSEMBLY TO REMAIN.
- NEW WALL
- 2 HOUR RATED FIRE BARRIER
- 1 HOUR RATED FIRE BARRIER
- PROJECT LIMITS OF WORK
- NO PIPING OR DUCTWORK SHALL BE ROUTED THROUGH ELECTRICAL AND/OR DATA ROOMS.
- NEW CONCRETE
- EXISTING AREAS OF RAISED CONCRETE TO REMAIN
- EXISTING CONCRETE TO BE REMOVED AND REPAIRED

D1 BASEMENT FLOOR PLAN - FIRE ALARM

SCALE: 1/8" = 1'-0"

DEMOLITION NOTE

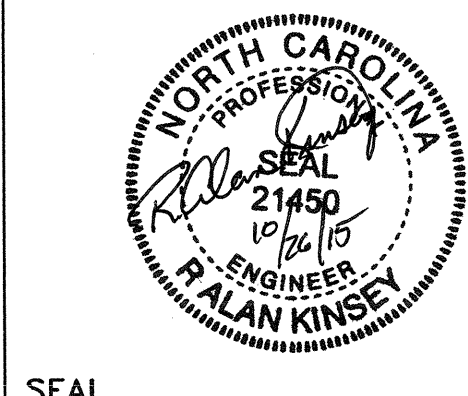
DEMOLISH THE EXISTING FIRE ALARM SYSTEM IN ITS ENTIRETY. WRAP AND/OR PACKAGE EQUIPMENT AND DEVICES AND TURN ALL OVER TO THE GOVERNMENT.

APPROXIMATE LOCATION OF PIV TAMPER SWITCH. SEE SHEET PS101, FOR EXACT LOCATION AND REQUIREMENTS.

REVISION NO.	REVISION DESCRIPTION	By	Date
1			
2			
3			
4			
5			
6			
7			
8			
9			
10			



Department of Veterans Affairs  
James H Quillen  
VA Medical Center  
Dogwood Ave.  
Mountain Home, TN 37684



Architect/Engineer Address



formerly HARRELL, SALTRICK & HOPPER, PC

8016 TOWER POINT DRIVE  
CHARLOTTE, NC 28227  
P 704.814.1300  
F 704.320.0833  
WWW.HARRELLDC.COM  
COPYRIGHT © 2015 HARRELL DESIGN GROUP, PC  
HDC PROJECT # 14009

Recommended Approvals:

1. MEDICAL DIRECTOR	6. OPERATIONS SERVICE LINE MANAGER
2. ASSOCIATE DIRECTOR	7. INFECTION CONTROL MANAGER
3. CHIEF OF STAFF	8. SAFETY MANAGER
4. ASSOC. DIRECTOR	9. GENERAL ENGINEER
5. SERVICE LINE MGRS.	10. COR

Drawing Title

BASEMENT FLOOR  
PLAN - FIRE ALARM-  
ALTERNATE

CONSTRUCTION  
DOCUMENTS

FULLY SPRINKLERED

Project Title

RENOVATE BUILDING 8  
FOR ENVIRONMENT AND  
CONDITION DEFICIENCIES

Drawn

WAO

Checked

HJ

Building Number

8

Reviewed

KAN

AutoCAD File Name

Const. Contract No.

Date

OCTOBER 26, 2015

Project Number

621-14-135

DRAWING No.

ALT -

FA100

DWG 82 of 108

