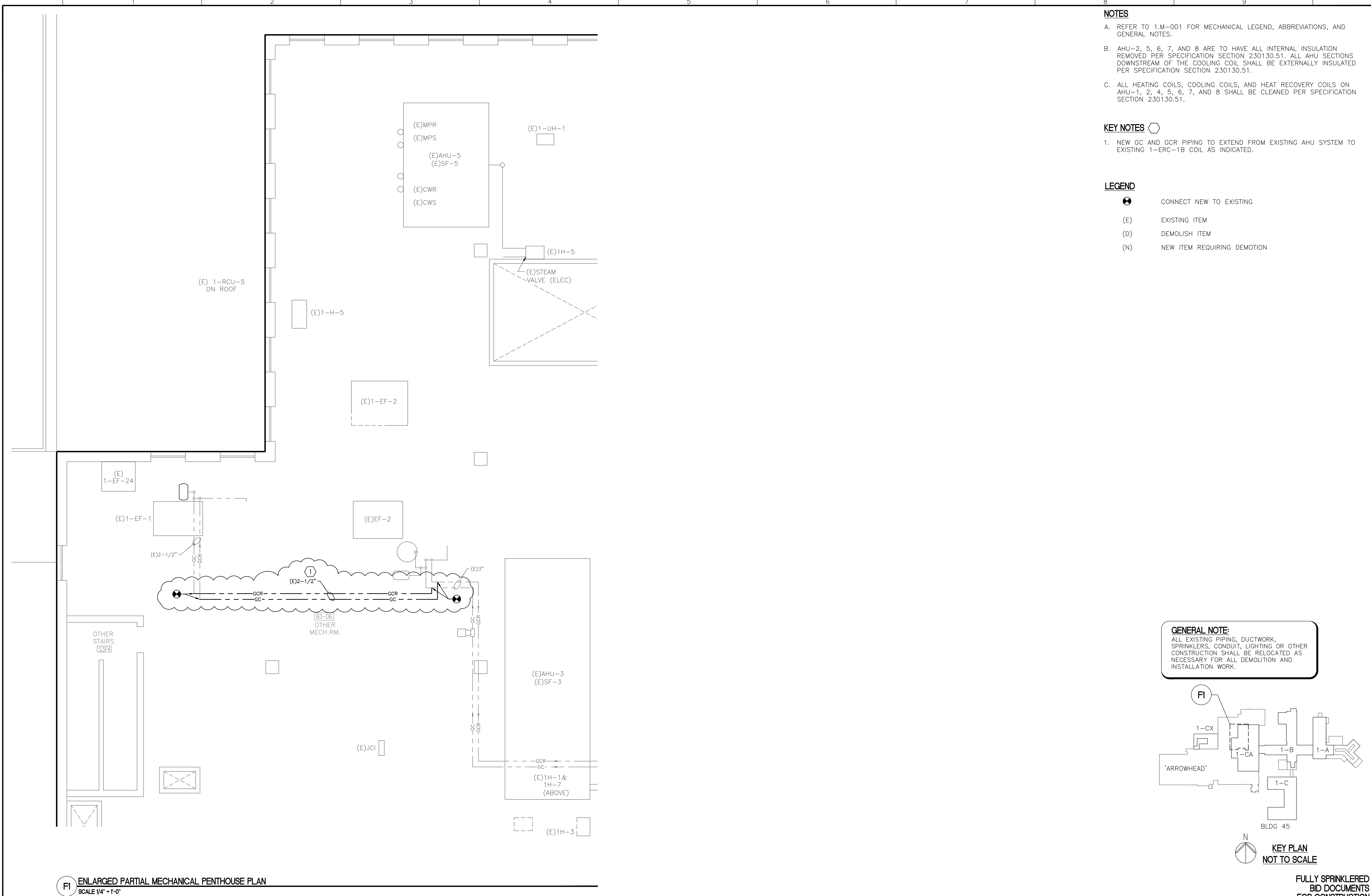


P:\04\1301 - Cheyenne Energy Corrections\Mechanical\AHS\DWG\MECH\ENLARGED.MPD 3/26/2015 4:27 AM

three eighths inch = one foot
one eighth inch = one foot
one quarter inch = one foot
three eighths inch = one foot
one half inch = one foot
one half inch = one foot
one half inch = one foot
three quarters inch = one foot
one inch = one foot
one and one half inches = one foot
three inches = one foot



| | | | | | | | | | |
|--------------------------|----------|--|--|--|--|---|-------------------------------|---|------------------------------|
| | | | ARCHITECT/ENGINEERS: | | Drawing Title: ENLARGED MECHANICAL PIPING PLAN MECHANICAL PENTHOUSE (AHU-1 to AHU-8) | Project Title: ENERGY CORRECTIONS PER ECM AUDIT | Project Number: 442-15-310 | Office of Construction and Facilities Management | |
| | | | <div>PARADIGM</div> <div>ENGINEERS AND CONSTRUCTORS</div> <div>200 Envoy Circle #201, Louisville KY 40299 - PH: 502.339.8511 - www.paradigmusa.com</div> | | Approved Project Director | Location: CHEYENNE VAMC 2060 E. PERSHING BOULEVARD, CHEYENNE, WY 82001 | Building Number: 1-CA | | |
| | | | | | | Date: 01-16-15 | Checked: KLP | | Drawing Number: 1CA.MP401 |
| | | | | | | | Drawn: JDM | | |
| | | | | | | | | | |
| | | | | | | | | | |
| AMENDMENT #1 (NEW SHEET) | 09/28/15 | | | | | | | | |
| Revisions | Date | | | | | | | | |

