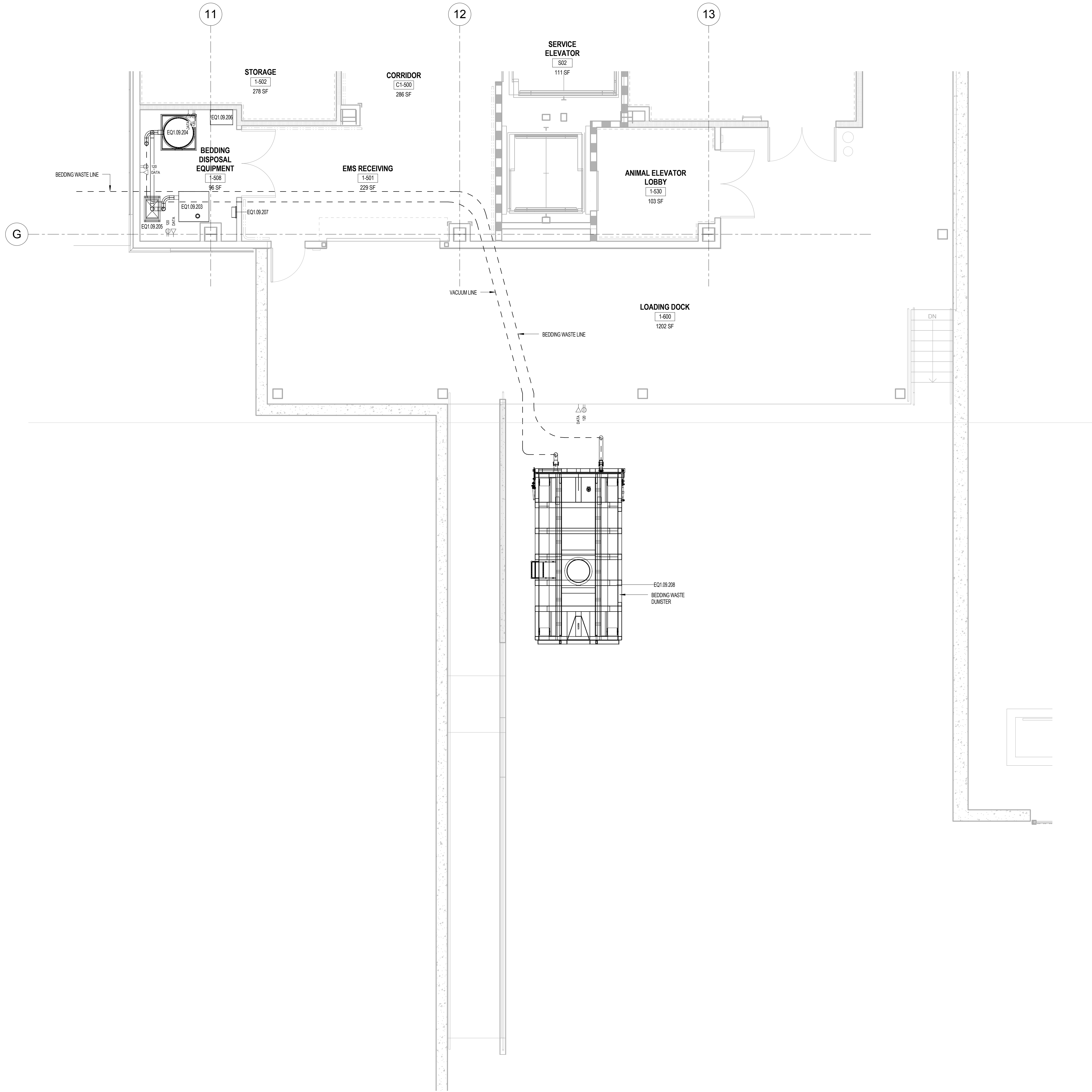


A
THREE INCHES = ONE FOOT
B
ONE AND ONE HALF INCHES = ONE FOOT
C
ONE INCH = ONE FOOT
D
THREE QUARTERS INCH = ONE FOOT
E
ONE HALF INCH = ONE FOOT
F
THREE EIGHTHS INCH = ONE FOOT
G
ONE QUARTER INCH = ONE FOOT
H
ONE EIGHTH INCH = ONE FOOT



- ### GENERAL NOTES
- A. REFER TO SHEET QL0.0.2 FOR CASEWORK DETAILS
 - B. REFER TO SHEET QL0.0.3 FOR THE LAYOUTS OF CEILING SERVICE PANELS
 - C. REFER TO SHEETS QL0.0.6-QL0.0.7 FOR BENCH DETAILS, ELECTRICAL, DATA AND GAS LAYOUTS
 - D. ELECTRICAL TO PROVIDE ELECTRICAL AND TELECOM TO PROVIDE DATA CONNECTIONS FOR WIRELESS ANTENNAS TO BE MOUNTED ON THE CEILING IN EACH ANIMAL HOLDING ROOM WITH IVC IN THEM.
 - E. REFER TO PLUMBING DRAWINGS AND SPECIFICATIONS FOR INFORMATION ON HAND WASH SINKS.
 - F. VERIFY THE LAYOUT OF ALL ANIMAL WATERING EQUIPMENT WITH MANUFACTURER.
 - G. REFERENCE SPECIFICATIONS FOR INFORMATION REGARDING THE BEDDING DISPENSING-DISPOSAL SYSTEM. COORDINATE WITH MANUFACTURER REGARDING TYPE, SIZE AND LOCATION OF THE STAINLESS STEEL TUBES FOR BEDDING DISPENSING AND DISPOSAL. TUBES SHOWN ARE FOR REFERENCE ONLY.
 - H. COORDINATE PIPING LAYOUT WITH MEP FOR ANY CONFLICTS AND INTERFERENCES.
 - I. ALL TABLES AND COUNTERTOPS IN THE VIVARIUM ARE TO HAVE STAINLESS STEEL TOPS.
 - J. ALL TABLES AND COUNTERTOPS ON LEVELS 1 & 2 ARE TO HAVE EPOXY RESIN TOPS.
 - K. ROOM PRESSURE MONITORS ARE LOCATED, CENTER ABOVE THE DOOR, WHERE INDICATED, REFER TO QL0.0.3
 - L. FOR ALL EQUIPMENT, REFER TO EQUIPMENT SCHEDULES AND SPECIFICATIONS FOR INFORMATION ON ELECTRICAL, DATA, MECHANICAL AND PLUMBING REQUIREMENTS.
 - M. ANY EQUIPMENT WITH A EQX.XX.XXX-XXX-XXX INDICATES THE EQUIPMENT IS PART OF THE DEDUCT ALTERNATE LIST. REFER TO EQUIPMENT SCHEDULES.
 - N. REFER TO QL0.0.2 SHEETS FOR INFORMATION REGARDING CASEWORK THAT IS A PART OF THE DEDUCT ALTERNATE LIST.
 - P. REFER TO QL0.0.3 FOR ELECTRICAL, DATA AND GAS LAYOUTS FOR ALL CEILING SERVICE CARRIER.
 - Q. ALL ELECTRICAL OUTLETS ARE SHOWN FOR REFERENCE ONLY. REFER TO ELECTRICAL DRAWINGS.
 - R. ALL FLOOR DRAINS AND FLOOR SINKS SHOWN ARE FOR REFERENCE ONLY. REFER TO ARCHITECTURAL AND PLUMBING DRAWINGS.
 - S. COORDINATE ALL DRAINS NEEDED FOR SPECIFIC EQUIPMENT WITH THE EQUIPMENT MANUFACTURERS.

KEYNOTES

GRAPHIC SCALE: 1/4" = 1'-0"

PROJ. NORTH
TRUE NORTH
11°

FULLY SPRINKLERED
CONSTRUCTION DOCUMENTS

CONSULTANTS:		Seals and Signatures		ARCHITECT/ENGINEERS:		Drawing Title		Project Title		Project Number	
						LEVEL 1 AREA J ENLARGED LABORATORY PLAN		CENTERS FOR AMBULATORY CARE, POLYTRAUMA AND BLIND REHABILITATION RESEARCH AND VMU			
						Approved: Project Director		Location		Drawing Number	
								3801 Miranda Ave., Palo Alto CA		QL2.3.9	
								Date		Checked	
								30 JULY 2015		VC	
										Drawn	
										LF	