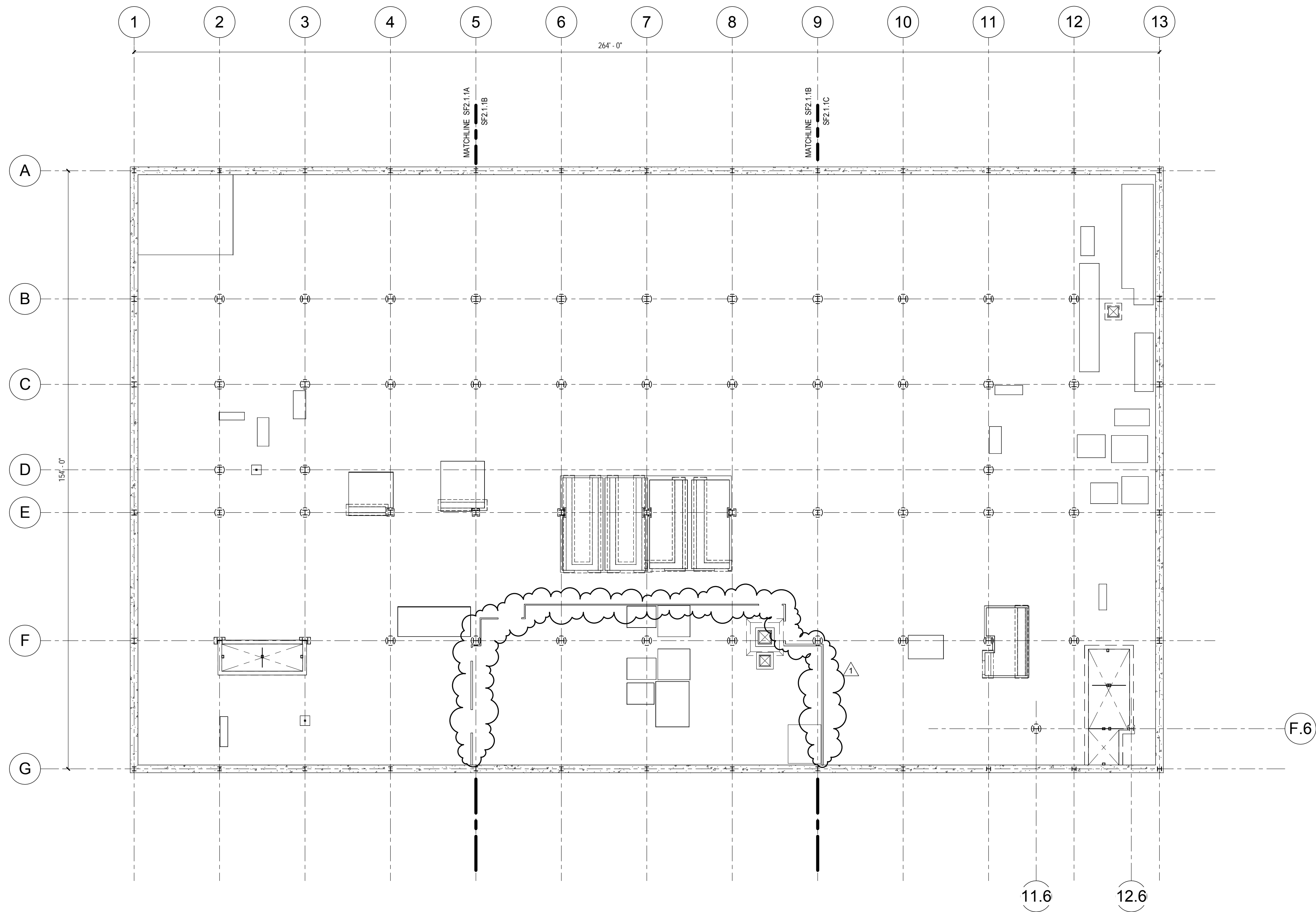
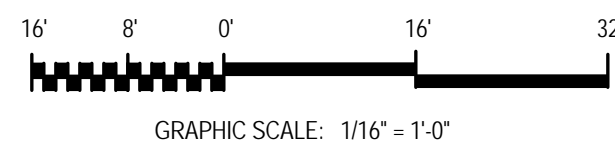
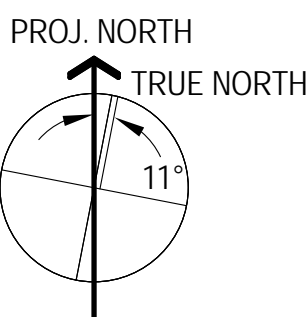


A
B
C
D
E
F

Three inches = one foot
one and one half inches = one foot
one inch = one foot
three quarters inch = one foot
one half inch = one foot
three eighths inch = one foot
one eighth inch = one foot







A	B	C
D	E	F
G	H	J



FULLY SPRINKLERED
CONSTRUCTION DOCUMENTS

54 OVERALL FLOOR FRAMING PLAN LEVEL V
1/16" = 1'-0"

CONSULTANTS:  DEGENKOLB ENGINEERS 235 Montgomery Street, Suite 500 San Francisco, CA 94104 415.392.6952 Phone 415.981.3157 Fax www.degenkolb.com		Seals and Signatures 		ARCHITECT/ENGINEERS: SMITHGROUP architecture engineering interiors planning 301 BATTERY STREET, 7TH FLOOR SAN FRANCISCO, CA 94111 T 415.227.0100 F 415.908.0862 www.smithgroup.com Associate Architect: The Design Partnership LLP Architects + Planners 1412 VAN NESS AVE., 2ND FLOOR SAN FRANCISCO, CA 94109 T 415.777.3737 F 415.777.3476 www.dpsf.com		Drawing Title OVERALL FLOOR FRAMING PLAN LEVEL V Approved: Project Director 		Project Title CENTERS FOR AMBULATORY CARE, POLYTRAUMA AND BLIND REHABILITATION RESEARCH AND VMU Location 3801 Miranda Ave., Palo Alto CA Date 30 JULY 2015 Checked KAJ Drawn MAM		Project Number 640-424 Building Number 710 Drawing Number SF2.1.1		Office of Construction and Facilities Management 	
--	--	--	--	---	--	---	--	--	--	--	--	--	--