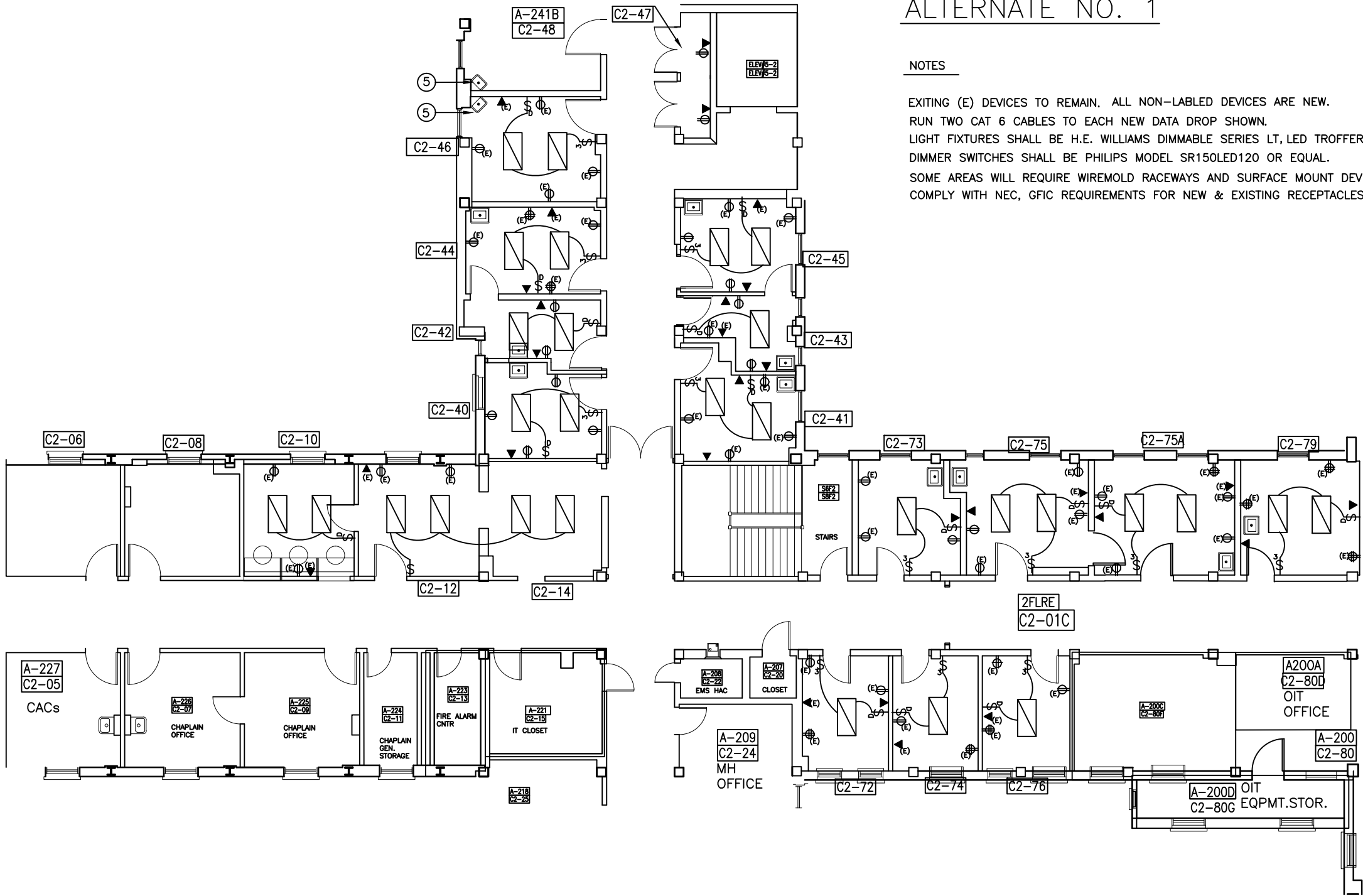


REVISIONS				
ZONE	REV	DESCRIPTION	DATE	APPROVED

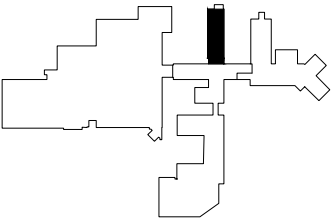
ALTERNATE NO. 1

NOTES

EXITING (E) DEVICES TO REMAIN. ALL NON-LABLED DEVICES ARE NEW.
 RUN TWO CAT 6 CABLES TO EACH NEW DATA DROP SHOWN.
 LIGHT FIXTURES SHALL BE H.E. WILLIAMS DIMMABLE SERIES LT,LED TROFFER OR EQUAL.
 DIMMER SWITCHES SHALL BE PHILIPS MODEL SR150LED120 OR EQUAL.
 SOME AREAS WILL REQUIRE WIREMOLD RACEWAYS AND SURFACE MOUNT DEVICES.
 COMPLY WITH NEC, GFCI REQUIREMENTS FOR NEW & EXISTING RECEPTACLES.



SECOND FLOOR PLAN NORTH CHEYENNE VAMC

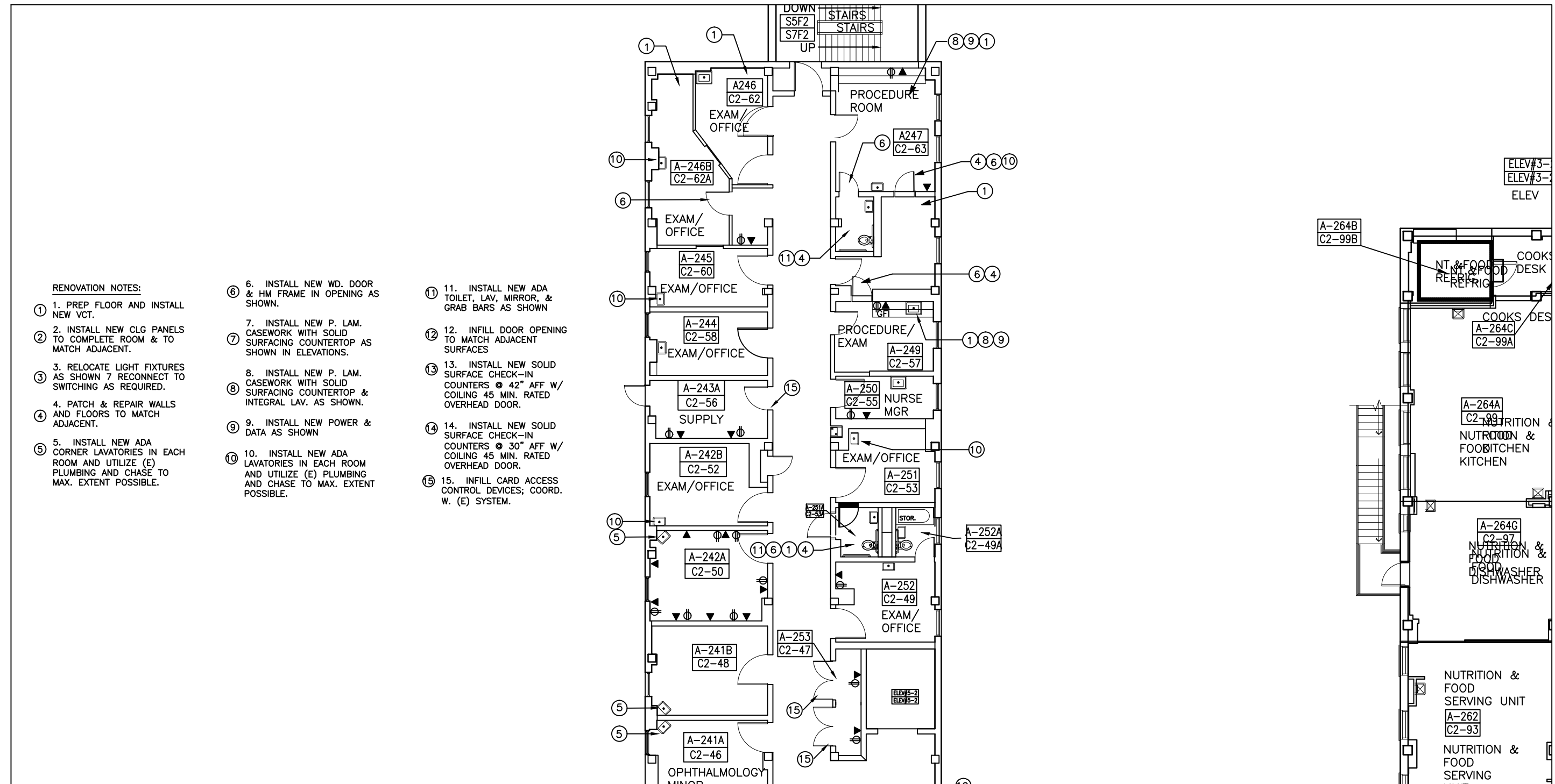


442-16-06S
 RELOCATE SPECIALTY
 & EYE CLINIC

SIZE	FROM NO.	DATE	NO.	REV

SCALE	1/8" = 1'-0"	SHEET	4.4
-------	--------------	-------	-----

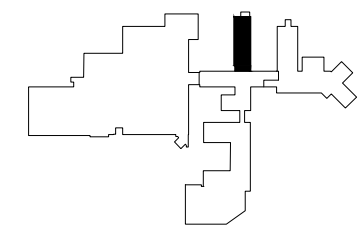
REVISIONS				
ZONE	REV	DESCRIPTION	DATE	APPROVED



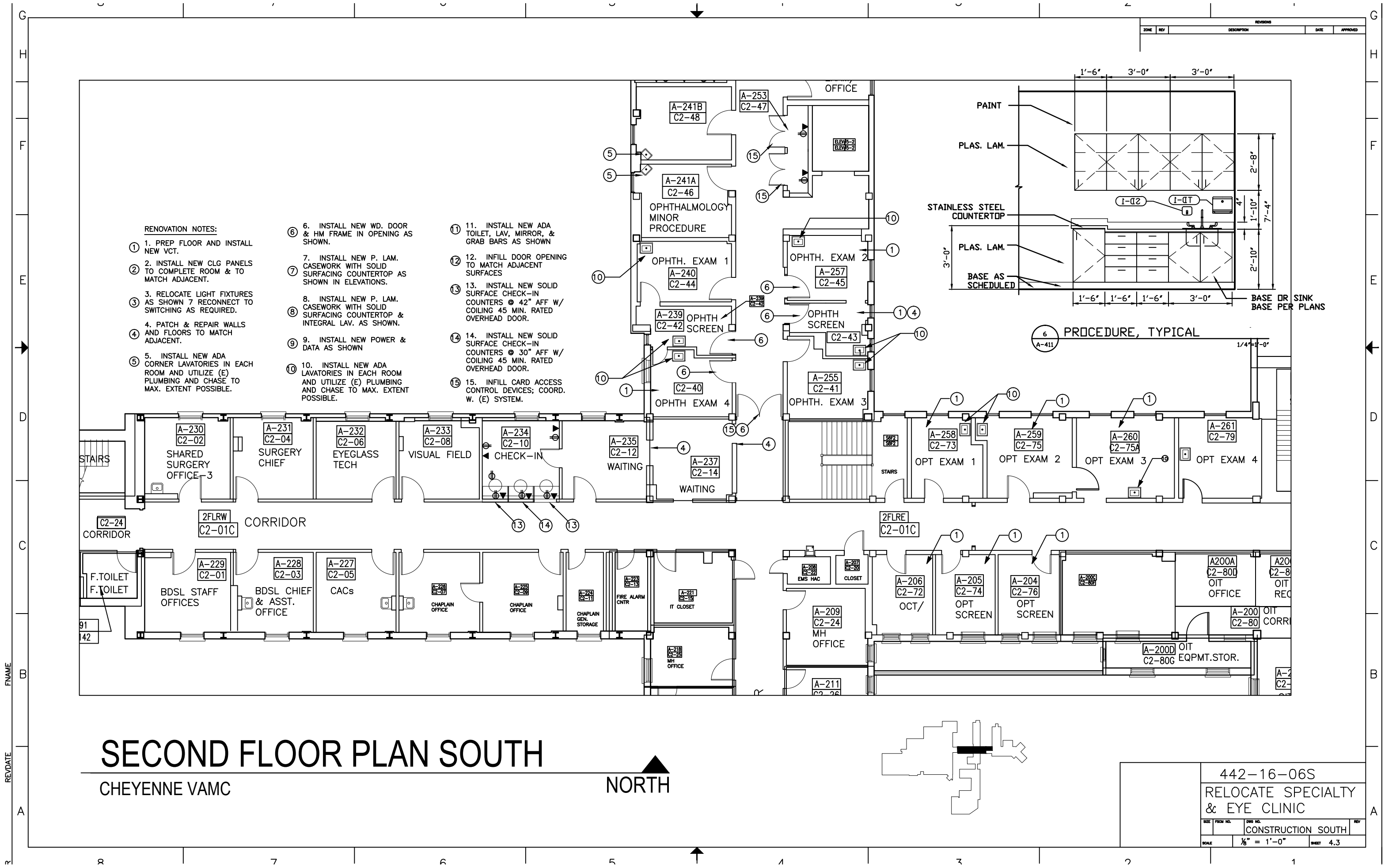
- RENOVATION NOTES:**
- ① 1. PREP FLOOR AND INSTALL NEW VCT.
 - ② 2. INSTALL NEW CLG PANELS TO COMPLETE ROOM & TO MATCH ADJACENT.
 - ③ 3. RELOCATE LIGHT FIXTURES AS SHOWN 7 RECONNECT TO SWITCHING AS REQUIRED.
 - ④ 4. PATCH & REPAIR WALLS AND FLOORS TO MATCH ADJACENT.
 - ⑤ 5. INSTALL NEW ADA CORNER LAVATORIES IN EACH ROOM AND UTILIZE (E) PLUMBING AND CHASE TO MAX. EXTENT POSSIBLE.
 - ⑥ 6. INSTALL NEW WD. DOOR & HM FRAME IN OPENING AS SHOWN.
 - ⑦ 7. INSTALL NEW P. LAM. CASEWORK WITH SOLID SURFACING COUNTERTOP AS SHOWN IN ELEVATIONS.
 - ⑧ 8. INSTALL NEW P. LAM. CASEWORK WITH SOLID SURFACING COUNTERTOP & INTEGRAL LAV. AS SHOWN.
 - ⑨ 9. INSTALL NEW POWER & DATA AS SHOWN
 - ⑩ 10. INSTALL NEW ADA LAVATORIES IN EACH ROOM AND UTILIZE (E) PLUMBING AND CHASE TO MAX. EXTENT POSSIBLE.
 - ⑪ 11. INSTALL NEW ADA TOILET, LAV, MIRROR, & GRAB BARS AS SHOWN
 - ⑫ 12. INFILL DOOR OPENING TO MATCH ADJACENT SURFACES
 - ⑬ 13. INSTALL NEW SOLID SURFACE CHECK-IN COUNTERS @ 42" AFF W/ COILING 45 MIN. RATED OVERHEAD DOOR.
 - ⑭ 14. INSTALL NEW SOLID SURFACE CHECK-IN COUNTERS @ 30" AFF W/ COILING 45 MIN. RATED OVERHEAD DOOR.
 - ⑮ 15. INFILL CARD ACCESS CONTROL DEVICES; COORD. W. (E) SYSTEM.

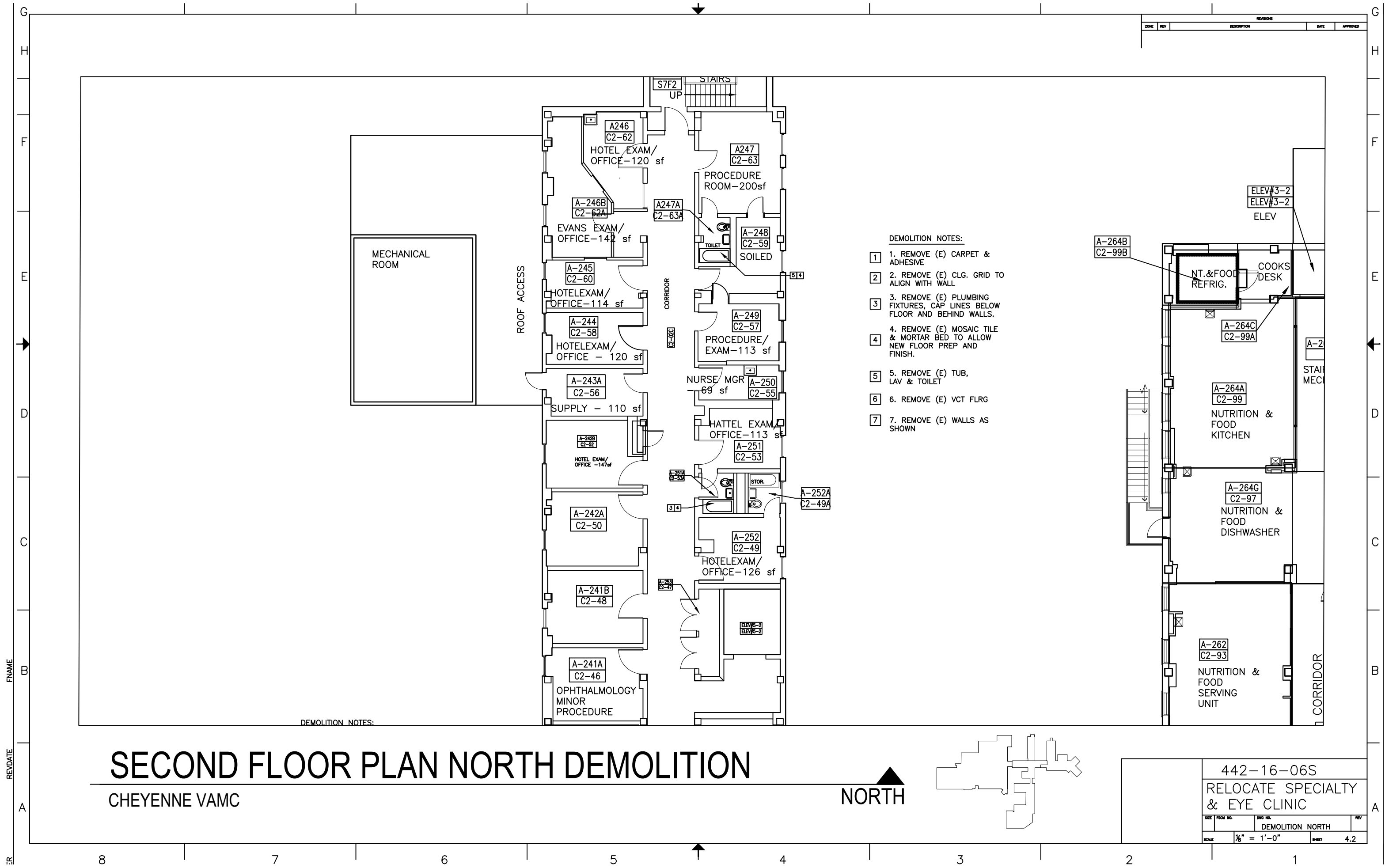
SECOND FLOOR PLAN NORTH

CHEYENNE VAMC



442-16-06S			
RELOCATE SPECIALTY & EYE CLINIC			
DATE	FROM NO.	OWN NO.	REV
CONSTRUCTION NORTH			
SCALE	1/8" = 1'-0"		SHEET 4.4





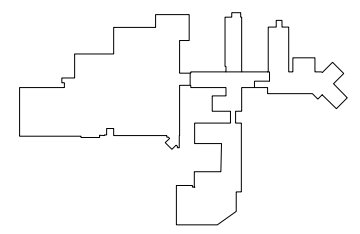


REVISIONS				
ZONE	REV	DESCRIPTION	DATE	APPROVED

- DEMOLITION NOTES:**
1. REMOVE (E) CARPET & ADHESIVE
 2. REMOVE (E) CLG. GRID TO ALIGN WITH WALL
 3. REMOVE (E) PLUMBING FIXTURES, CAP LINES BELOW FLOOR AND BEHIND WALLS.
 4. REMOVE (E) MOSAIC TILE & MORTAR BED TO ALLOW NEW FLOOR PREP AND FINISH.
 5. REMOVE (E) TUB, LAV & TOILET
 6. REMOVE (E) VCT FLRG
 7. REMOVE (E) WALLS AS SHOWN

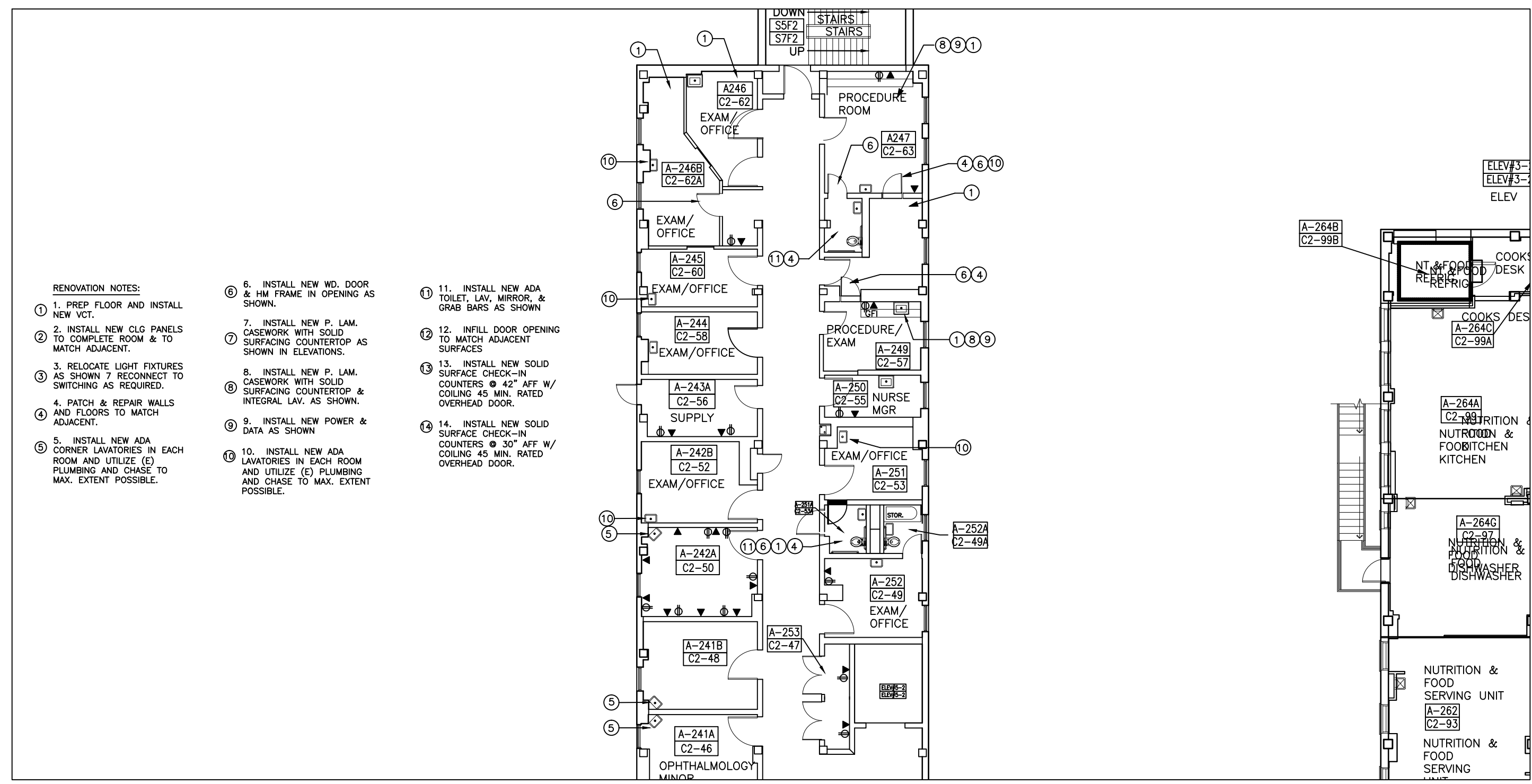
SECOND FLOOR PLAN SOUTH DEMOLITION

CHEYENNE VAMC



442-16-06S			
RELOCATE SPECIALTY & EYE CLINIC			
SIZE	FROM NO.	DATE	REV
DEMOLITION SOUTH			
SCALE	1/8" = 1'-0"		SHEET 4.1

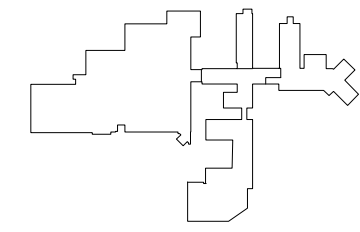
REVISIONS				
ZONE	REV	DESCRIPTION	DATE	APPROVED



- RENOVATION NOTES:**
- ① 1. PREP FLOOR AND INSTALL NEW VCT.
 - ② 2. INSTALL NEW CLG PANELS TO COMPLETE ROOM & TO MATCH ADJACENT.
 - ③ 3. RELOCATE LIGHT FIXTURES AS SHOWN 7 RECONNECT TO SWITCHING AS REQUIRED.
 - ④ 4. PATCH & REPAIR WALLS AND FLOORS TO MATCH ADJACENT.
 - ⑤ 5. INSTALL NEW ADA CORNER LAVATORIES IN EACH ROOM AND UTILIZE (E) PLUMBING AND CHASE TO MAX. EXTENT POSSIBLE.
 - ⑥ 6. INSTALL NEW WD. DOOR & HM FRAME IN OPENING AS SHOWN.
 - ⑦ 7. INSTALL NEW P. LAM. CASEWORK WITH SOLID SURFACING COUNTERTOP AS SHOWN IN ELEVATIONS.
 - ⑧ 8. INSTALL NEW P. LAM. CASEWORK WITH SOLID SURFACING COUNTERTOP & INTEGRAL LAV. AS SHOWN.
 - ⑨ 9. INSTALL NEW POWER & DATA AS SHOWN
 - ⑩ 10. INSTALL NEW ADA LAVATORIES IN EACH ROOM AND UTILIZE (E) PLUMBING AND CHASE TO MAX. EXTENT POSSIBLE.
 - ⑪ 11. INSTALL NEW ADA TOILET, LAV, MIRROR, & GRAB BARS AS SHOWN
 - ⑫ 12. INFILL DOOR OPENING TO MATCH ADJACENT SURFACES
 - ⑬ 13. INSTALL NEW SOLID SURFACE CHECK-IN COUNTERS @ 42" AFF W/ COILING 45 MIN. RATED OVERHEAD DOOR.
 - ⑭ 14. INSTALL NEW SOLID SURFACE CHECK-IN COUNTERS @ 30" AFF W/ COILING 45 MIN. RATED OVERHEAD DOOR.

SECOND FLOOR PLAN NORTH

CHEYENNE VAMC



442-16-06S			
RELOCATE SPECIALTY & EYE CLINIC			
SIZE	FROM NO.	CHG NO.	REV
SCALE	1/8" = 1'-0"	SHEET	4.4

