

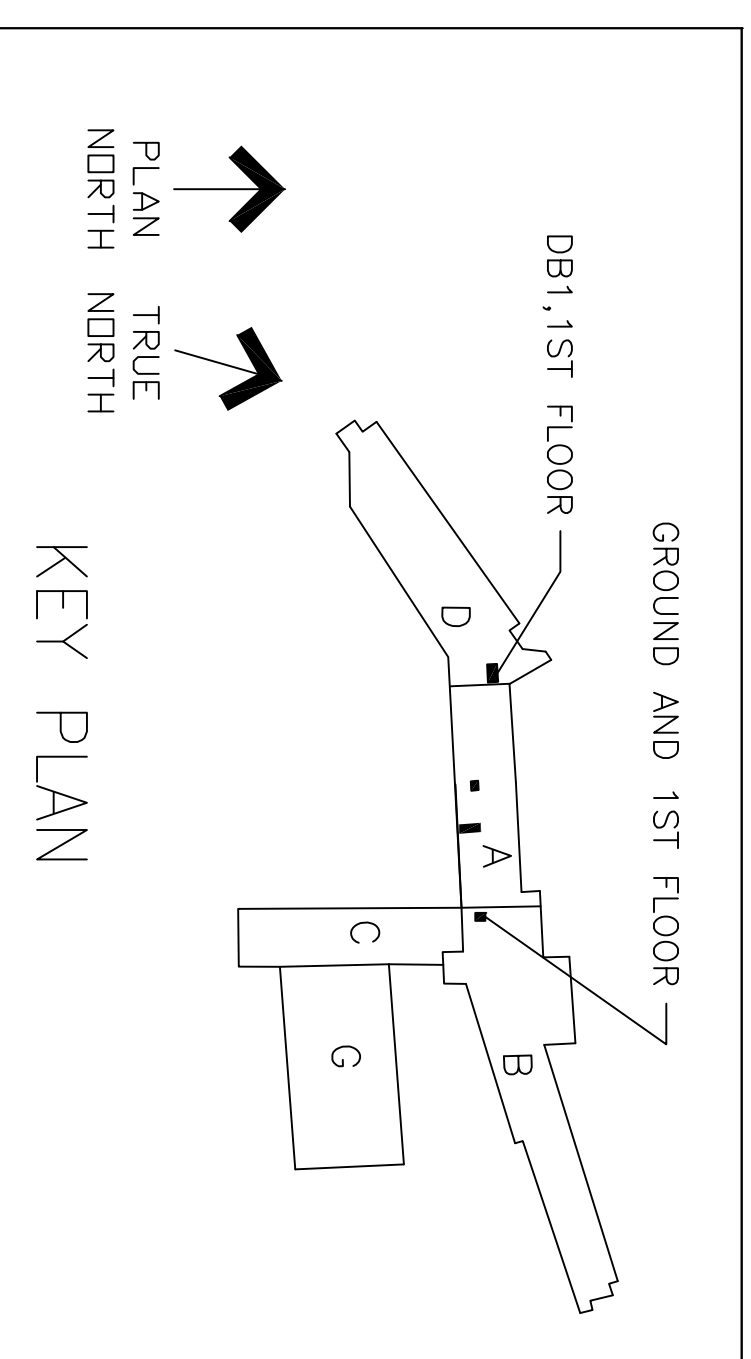
DOOR, CEILING AND LIGHTING UPGRADES
VA MEDICAL CENTER – MADISON, WI
VA PROJECT NO. 607-16-110
SHEET INDEX

SHEET INDEX

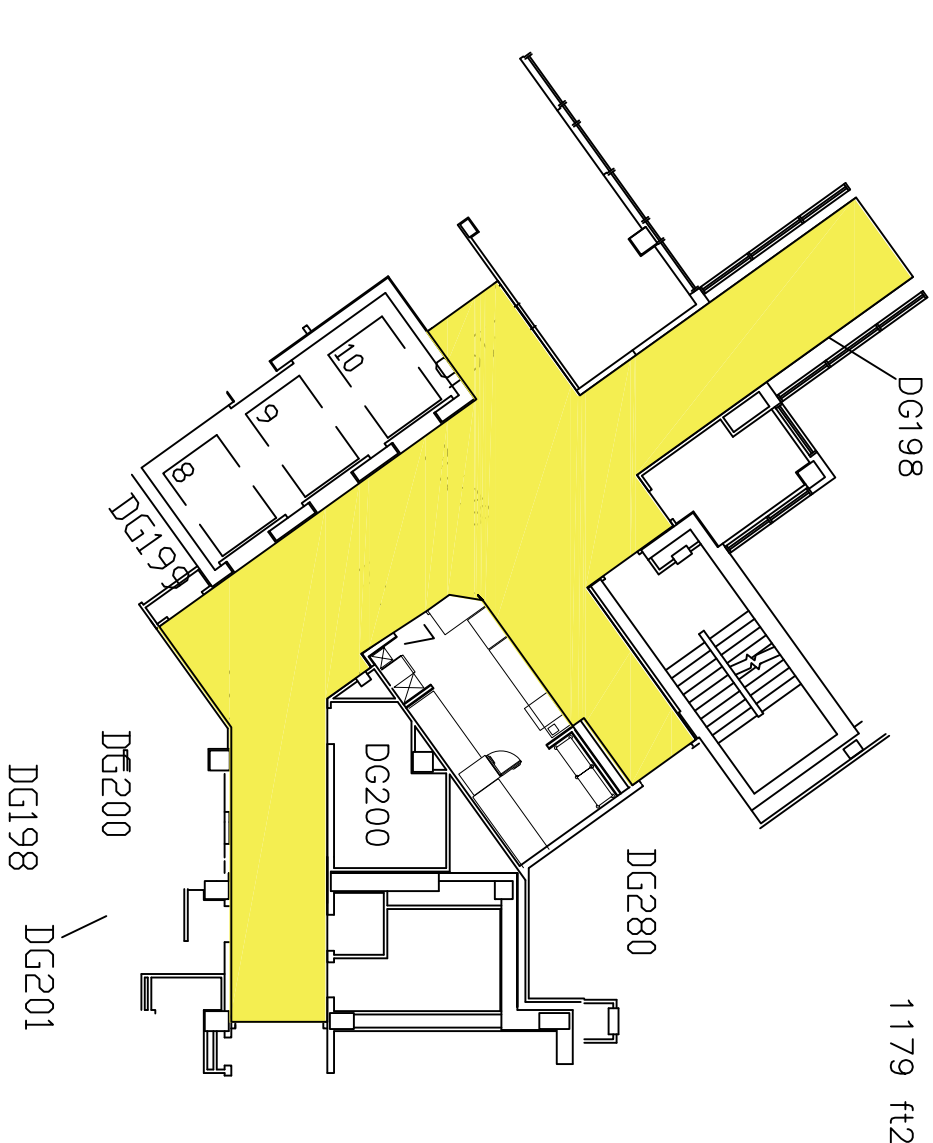
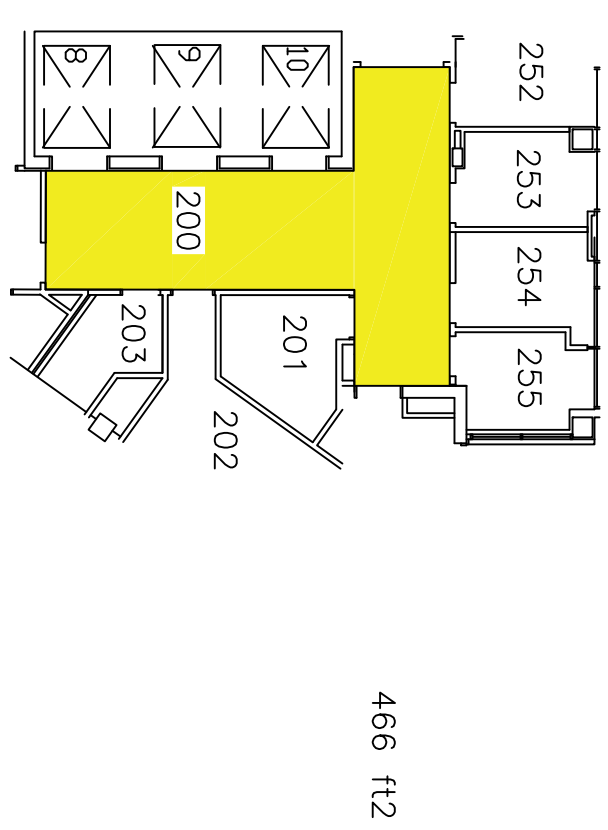
A-1 - DB1, GROUND FLOOR, AND 1ST FLOOR

A-2 - 2nd & 4th FLOORS

A-3 - 5th, 6th, & 7th FLOORS



DB1 FLOOR - D-WING

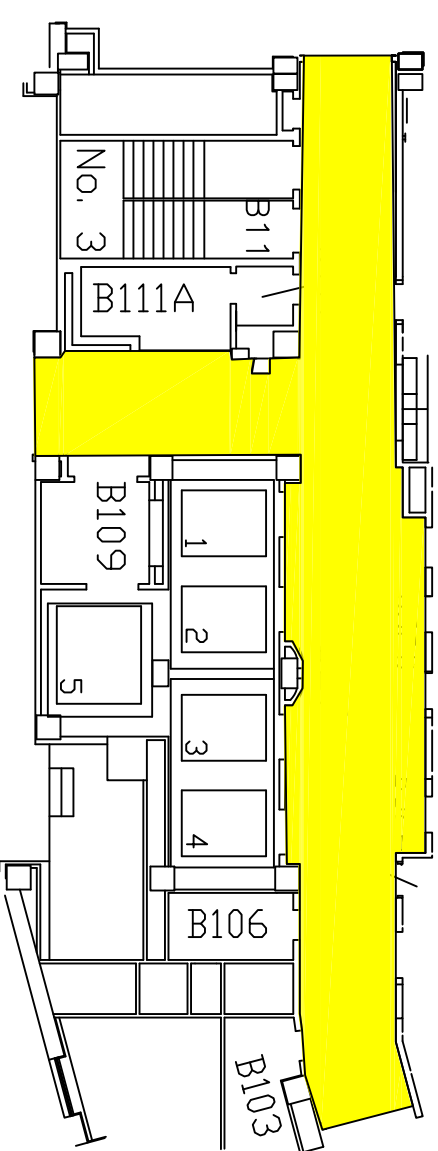
$$1/4'' = 1' - 0''$$


GROUND FLOOR D WING

$$1/4'' = 1' - 0''$$

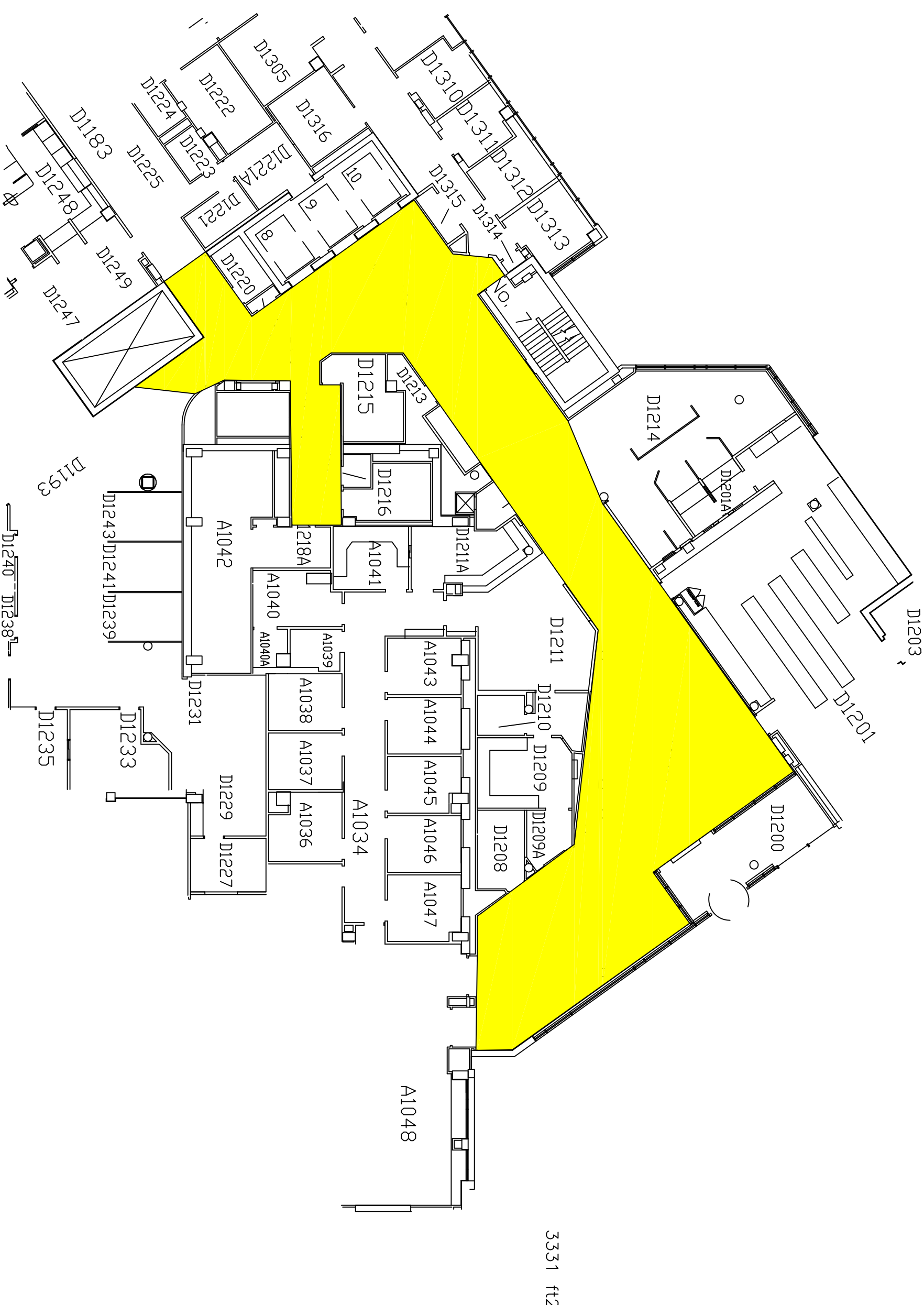
NOTES

1. CONTRACTOR SHALL VERIFY ALL EXISTING CONDITIONS & DIMENSIONS PRIOR TO BIDDING ON THIS WORK.
2. CONTRACTOR SHALL COMPLY W/ ALL VA SPECIFICATIONS AND STANDARDS.
3. CONTRACTOR SHALL REMOVE AND REPLACE ALL CEILING TILES IN HIGHLIGHTED AREAS.
4. CONTRACTOR SHALL REMOVE AND REPLACE ALL LIGHT FIXTURES IN HIGHLIGHTED AREAS. REFER TO LIGHT FIXTURE SCHEDULE FOR ADDITIONAL INFORMATION.

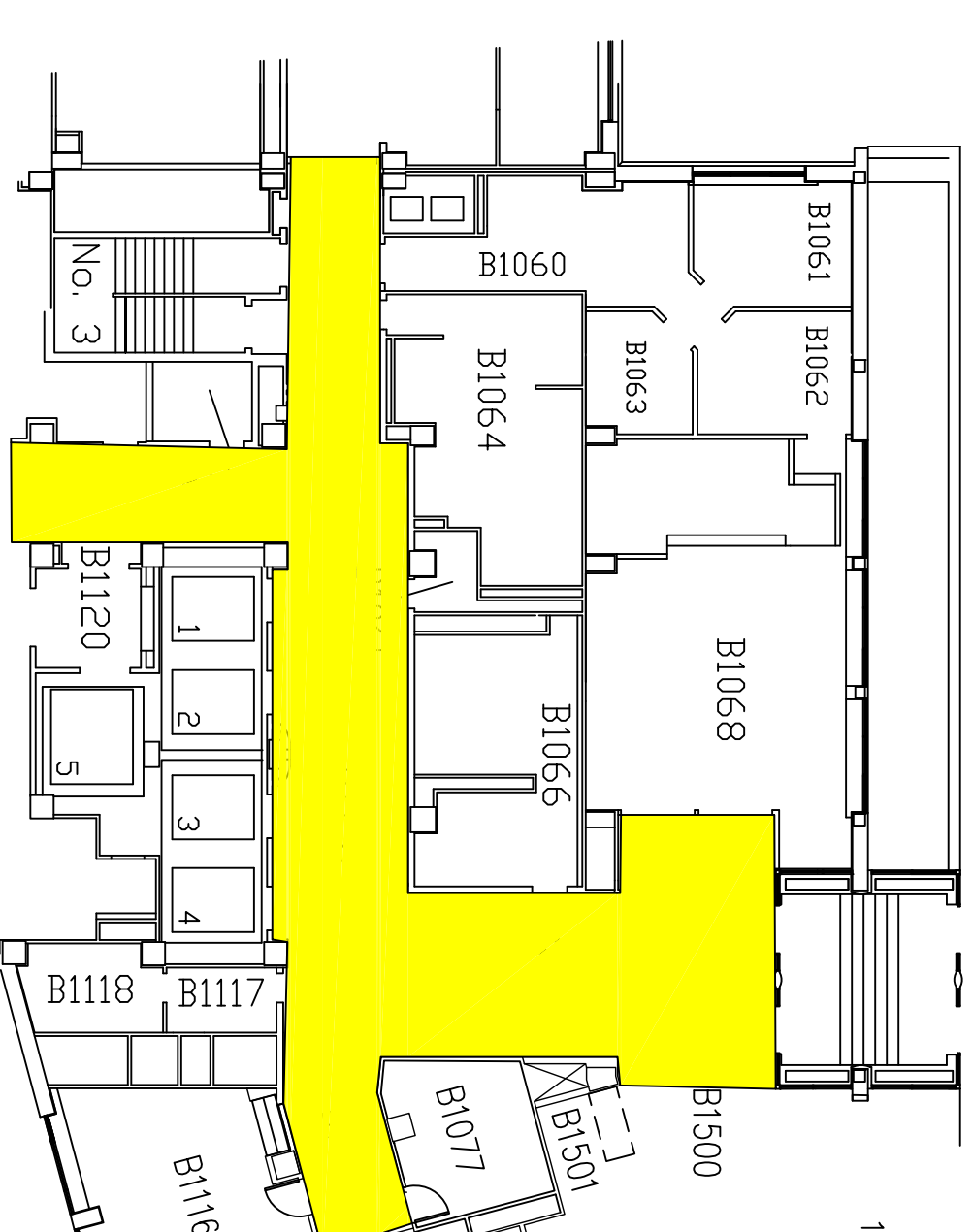


987 ft2

GROUND FLOOR B WING

$$1/4'' = 1' - 0''$$


3331 f42



1674 ft2

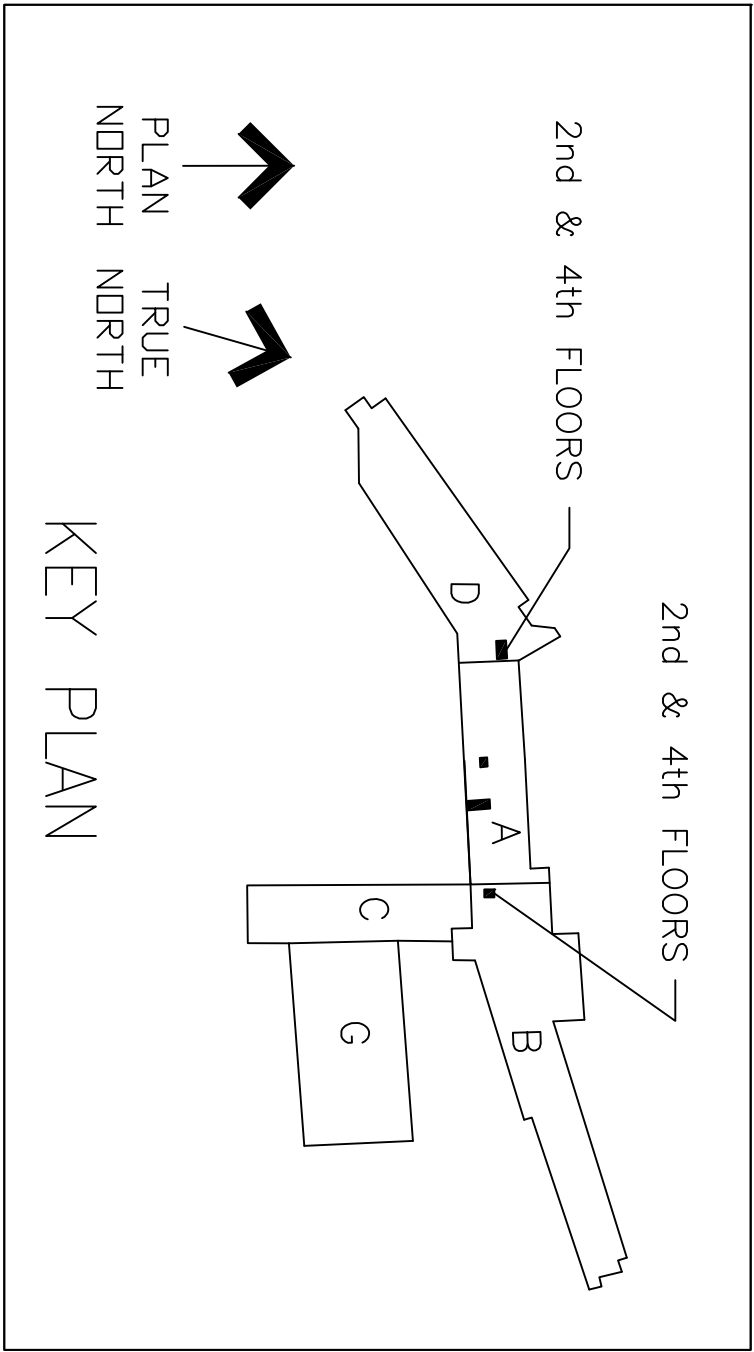
1ST FLOOR B WING

$$1/4'' = 1' - 0''$$
[illegible]

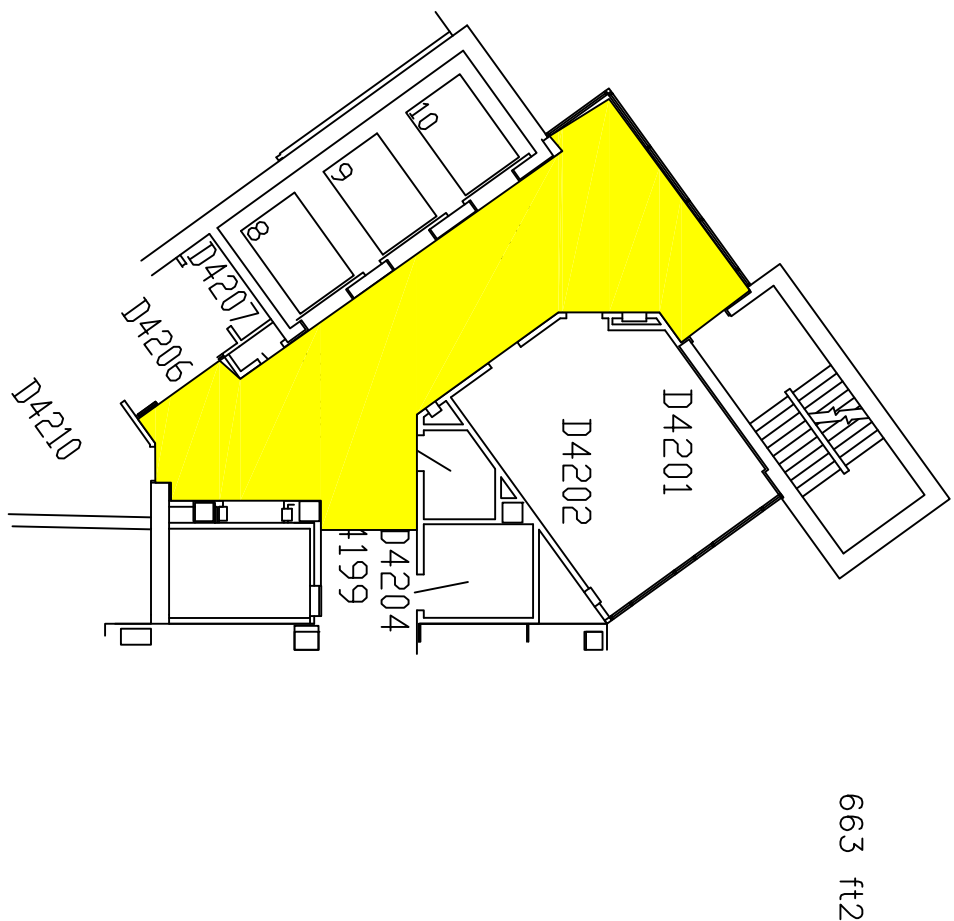
DOOR, CEILING AND LIGHTING UPGRADES
VA MEDICAL CENTER – MADISON, WI
VA PROJECT NO. 607-16-110

SHEET INDEX

- A-1 – DBI, GROUND FLOOR, AND 1ST FLOOR
- A-2 – 2nd & 4th FLOORS
- A-3 – 5th, 6th, & 7th FLOORS

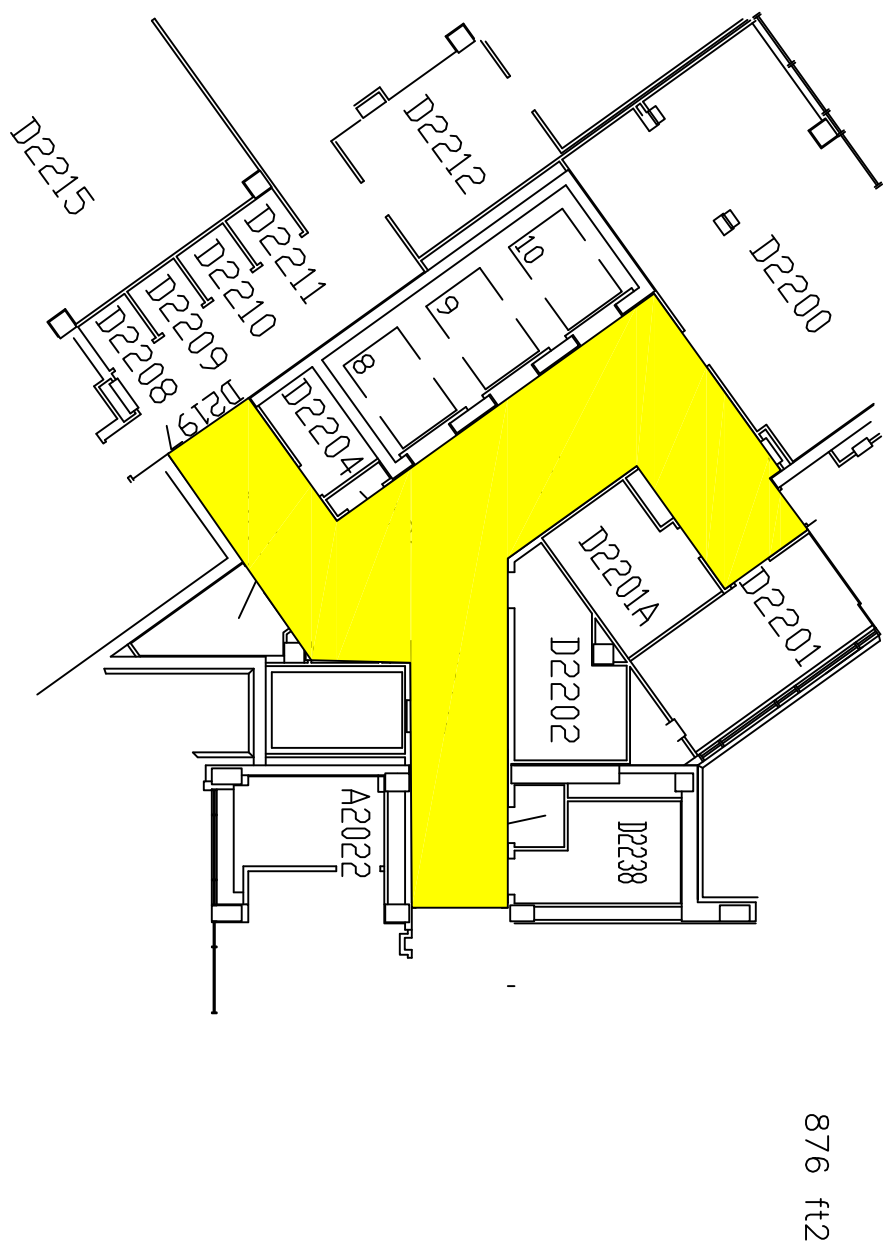


- NOTES:
1. CONTRACTOR SHALL VERIFY ALL EXISTING CONDITIONS & DIMENSIONS PRIOR TO BIDDING ON THIS WORK.
 2. CONTRACTOR SHALL COMPLY W/ ALL VA SPECIFICATIONS AND STANDARDS.
 3. CONTRACTOR SHALL REMOVE AND REPLACE ALL CEILING TILES IN HIGHLIGHTED AREAS.
 4. CONTRACTOR SHALL REMOVE AND REPLACE ALL LIGHT FIXTURES IN HIGHLIGHTED AREAS. REFER TO LIGHT FIXTURE SCHEDULE FOR ADDITIONAL INFORMATION.



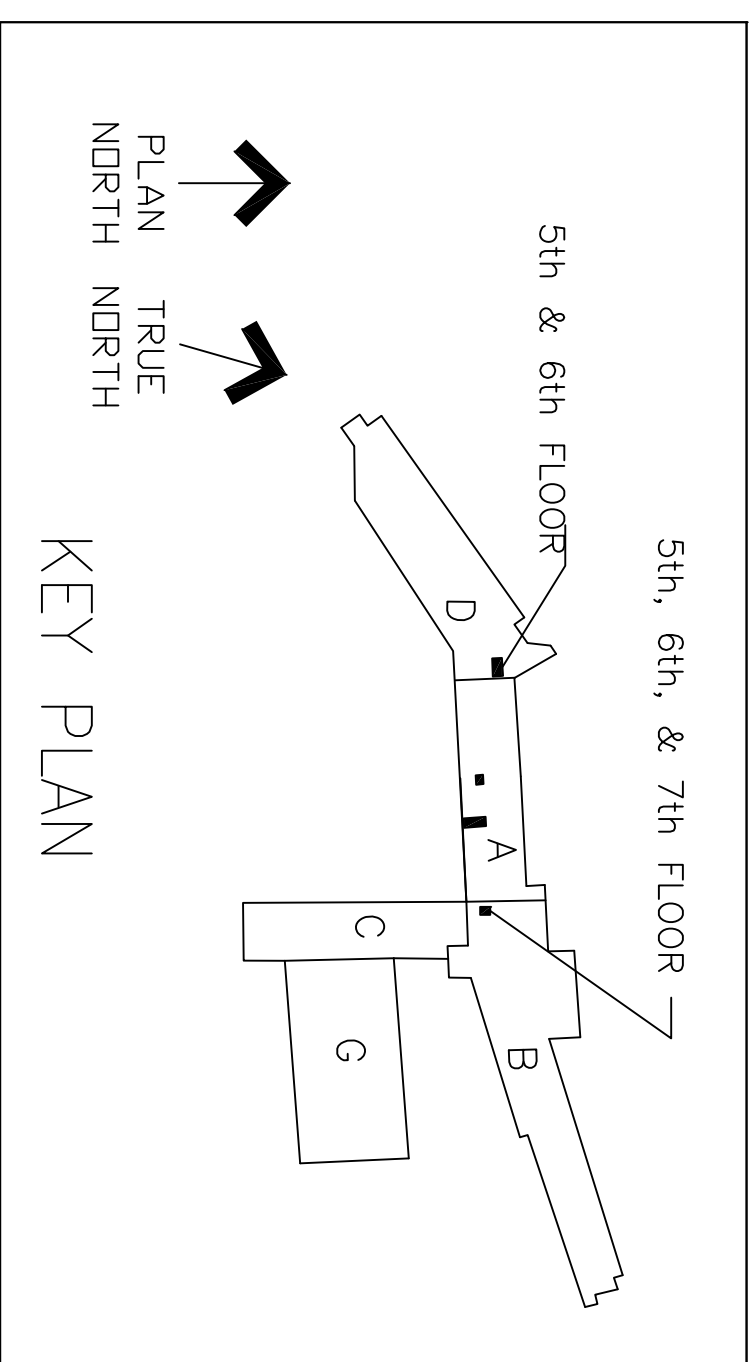
4th FLOOR D WING

1 / 4 ” = 1 ’ – 0 ”

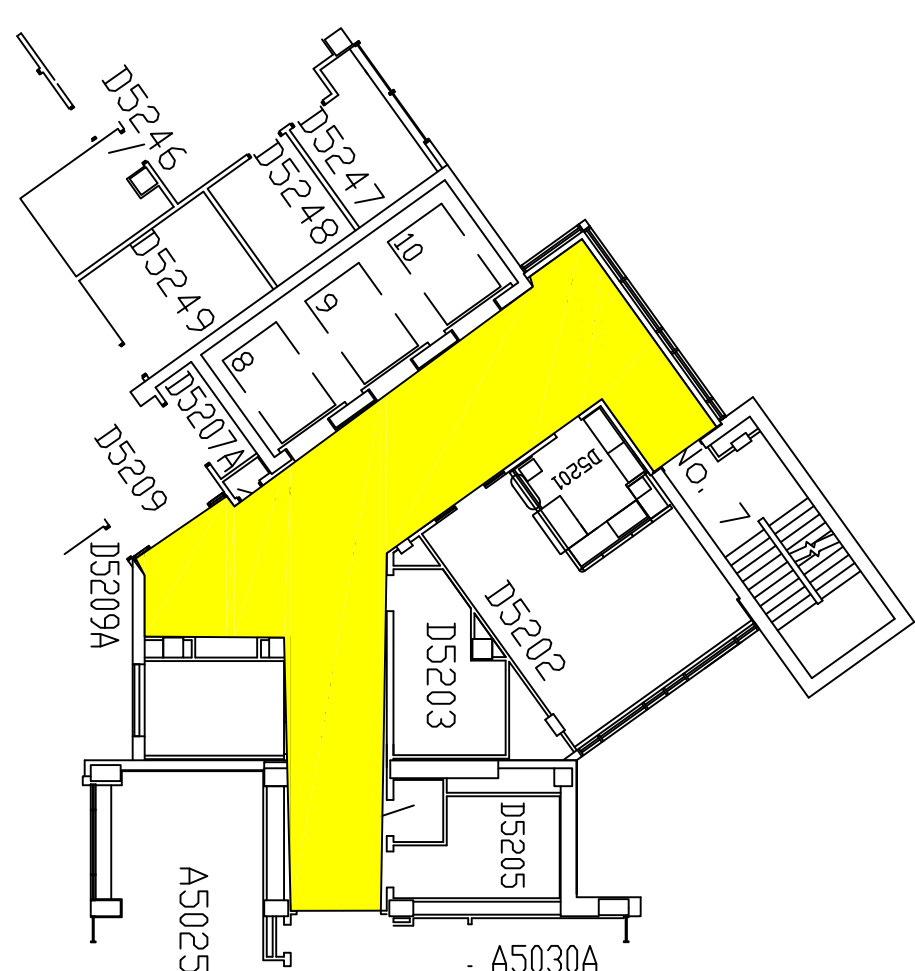


DOOR, CEILING AND LIGHTING UPGRADES
VA MEDICAL CENTER – MADISON, WI
VA PROJECT NO. 607-16-110
SHEET INDEX

A-1 - DBI, GROUND FLOOR, AND 1ST FLOOR
A-2 - 2nd & 4th FLOORS
A-3 - 5th, 6th, & 7th FLOORS



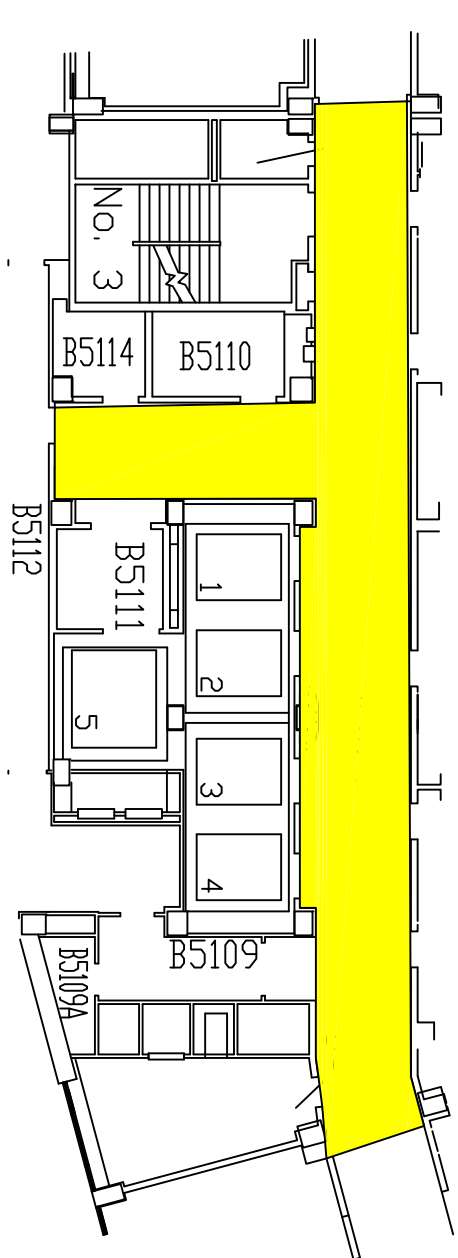
5th FLOOR D WING



771 ft2

$$1/4'' = 1' - 0''$$

5th FLOOR B WING

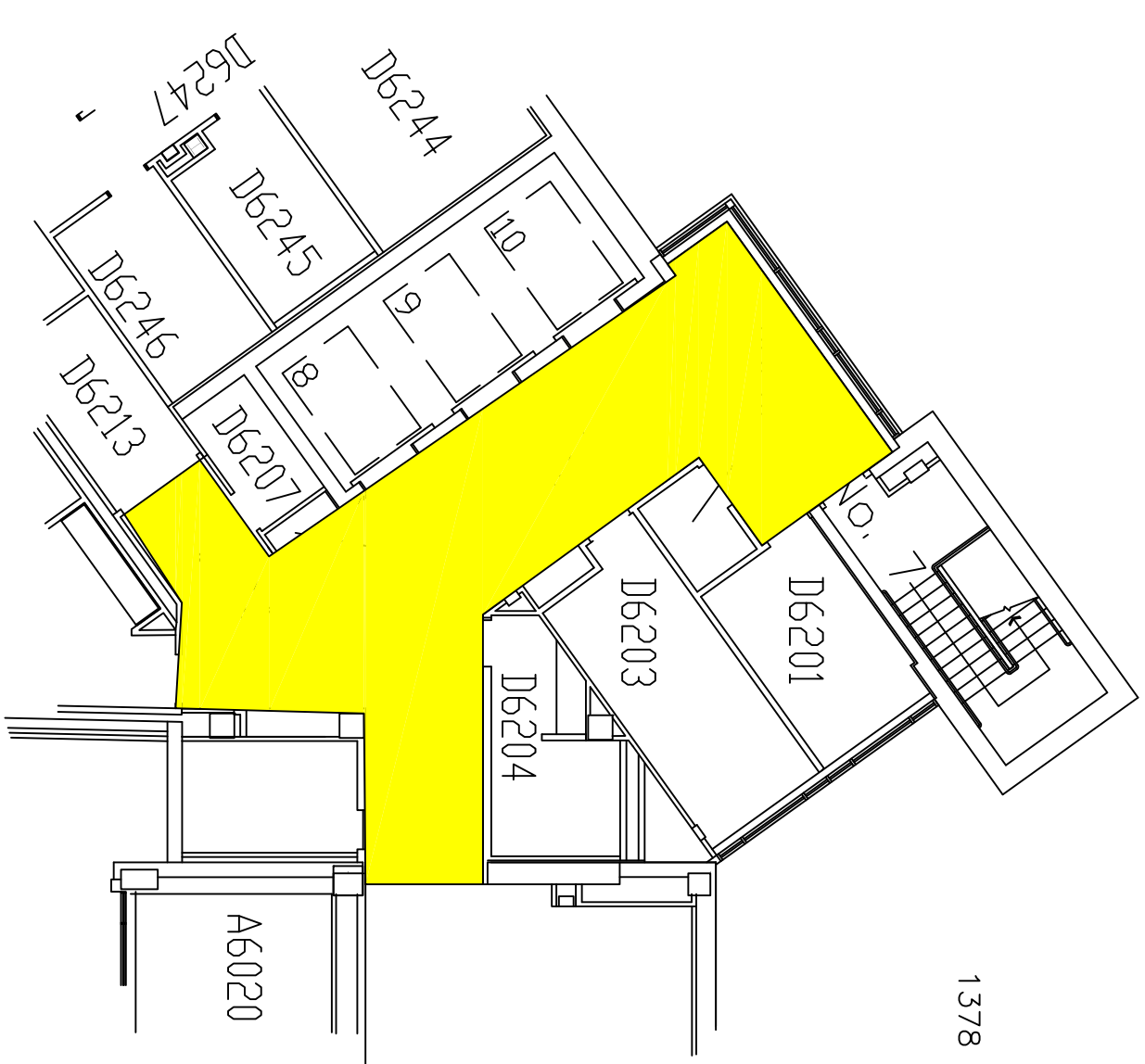


888 ft2

$$1/4'' = 1' - 0''$$

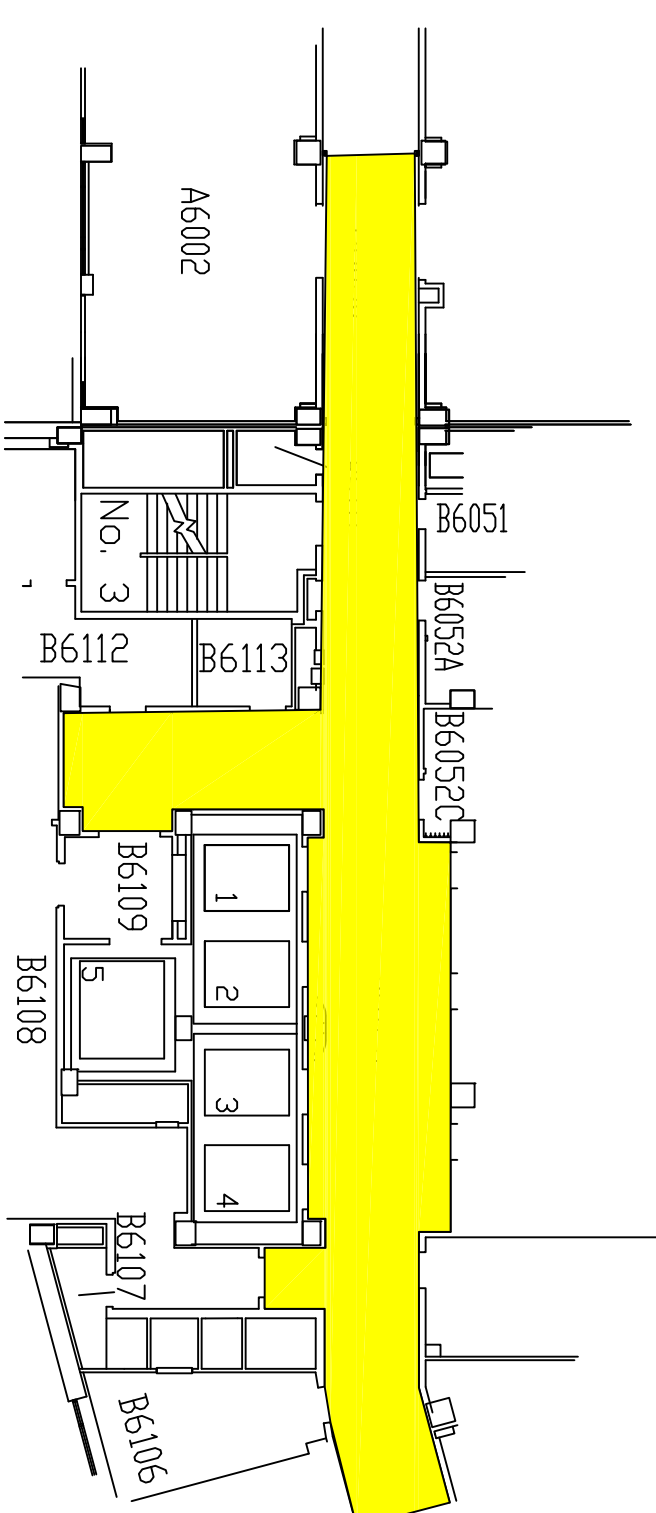
NOTES

1. CONTRACTOR SHALL VERIFY ALL EXISTING CONDITIONS & DIMENSIONS PRIOR TO BIDDING ON THIS WORK.
2. CONTRACTOR SHALL COMPLY W/ ALL VA SPECIFICATIONS AND STANDARDS.
3. CONTRACTOR SHALL REMOVE AND REPLACE ALL CEILING TILES IN HIGHLIGHTED AREAS.
4. CONTRACTOR SHALL REMOVE AND REPLACE ALL LIGHT FIXTURES IN HIGHLIGHTED AREAS. REFER TO LIGHT FIXTURE SCHEDULE FOR ADDITIONAL INFORMATION.



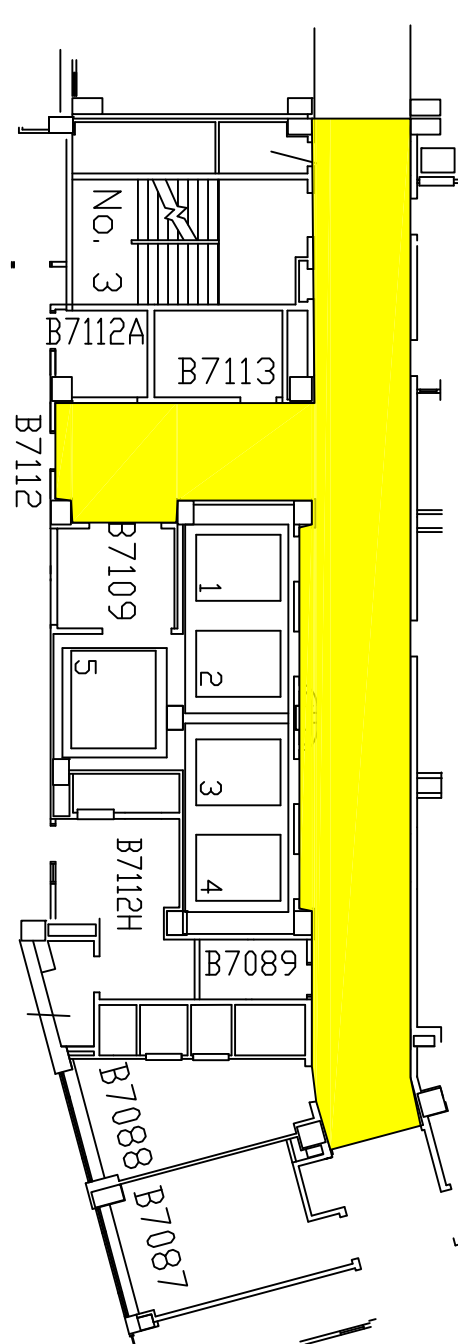
1378 ft2

6th FLOOR D WING

$$1/4'' = 1' - 0''$$


1233 ft2

6th FLOOR B WING

$$1/4'' = 1' - 0''$$


917 ft2

7th FLOOR B WING

$$1/4 = 1 - 0$$
[illegible]