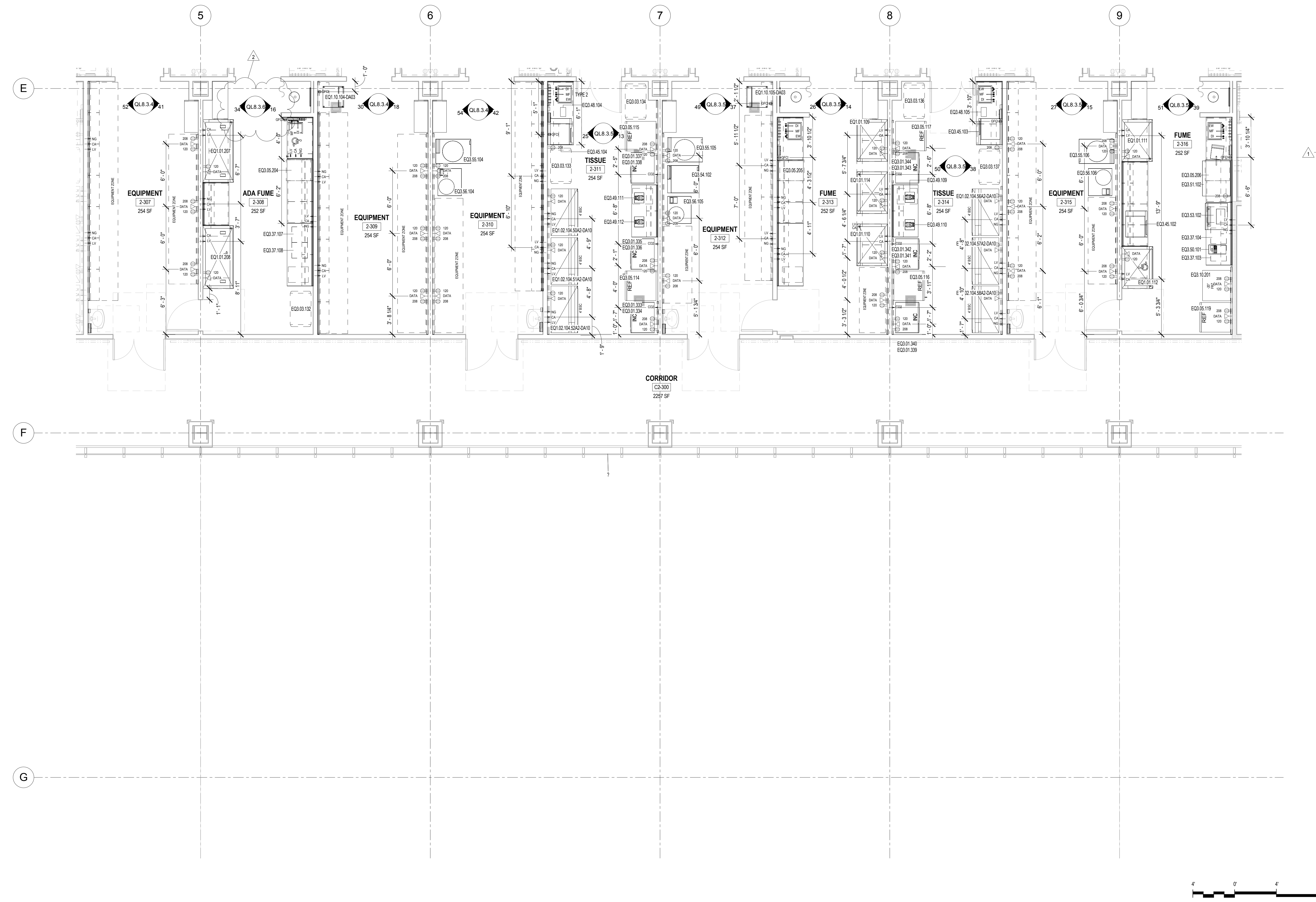


A
THREE INCHES = ONE FOOT
B
ONE AND ONE HALF INCHES = ONE FOOT
C
ONE INCH = ONE FOOT
D
THREE QUARTERS INCH = ONE FOOT
E
ONE HALF INCH = ONE FOOT
F
THREE EIGHTHS INCH = ONE FOOT
G
ONE QUARTER INCH = ONE FOOT



GENERAL NOTES

- REFER TO SHEET QL0.0.2 FOR CASEWORK DETAILS
- REFER TO SHEET QL0.0.3 FOR THE LAYOUTS OF CEILING SERVICE PANELS
- REFER TO SHEETS QL0.0.6-QL0.0.7 FOR BENCH DETAILS, ELECTRICAL, DATA AND GAS LAYOUTS
- ELECTRICAL TO PROVIDE ELECTRICAL AND TELECOM TO PROVIDE DATA CONNECTIONS FOR WIRELESS ANTENNAS TO BE MOUNTED ON THE CEILING IN EACH ANIMAL HOLDING ROOM WITH IVC IN THEM
- REFER TO PLUMBING DRAWINGS AND SPECIFICATIONS FOR INFORMATION ON HAND WASH SINKS
- VERIFY THE LAYOUT OF ALL ANIMAL WATERING EQUIPMENT WITH MANUFACTURER
- REFERENCE SPECIFICATIONS FOR INFORMATION REGARDING THE BEDDING DISPENSING/DISPOSAL SYSTEM. COORDINATE WITH MANUFACTURER REGARDING TYPE, SIZE AND LOCATION OF THE STAINLESS STEEL TUBES FOR BEDDING DISPENSING AND DISPOSAL. TUBES SHOWN ARE FOR REFERENCE ONLY
- COORDINATE PIPING LAYOUT WITH MEP FOR ANY CONFLICTS AND INTERFERENCES
- ALL TABLES AND COUNTERTOPS IN THE VIVARIUM ARE TO HAVE STAINLESS STEEL TOPS
- ALL TABLES AND COUNTERTOPS ON LEVELS 1 & 2 ARE TO HAVE EPOXY RESIN TOPS
- ROOM PRESSURE MONITORS ARE LOCATED, CENTER ABOVE THE DOOR, WHERE INDICATED, REFER TO QL0.0.3
- FOR ALL EQUIPMENT, REFER TO EQUIPMENT SCHEDULES AND SPECIFICATIONS FOR INFORMATION ON ELECTRICAL, DATA, MECHANICAL, AND PLUMBING REQUIREMENTS
- ANY EQUIPMENT WITH A EQXXX-XXX-XXX-XXX INDICATES THE EQUIPMENT IS PART OF THE DEDUCT ALTERNATE LIST. REFER TO EQUIPMENT SCHEDULES
- REFER TO QL0.0.2 SHEETS FOR INFORMATION REGARDING CASEWORK THAT IS APART OF THE DEDUCT ALTERNATE LIST
- REFER TO QL0.0.3 FOR ELECTRICAL, DATA AND GAS LAYOUTS FOR ALL CEILING SERVICE CARRIERS
- ALL ELECTRICAL OUTLETS ARE SHOWN FOR REFERENCE ONLY. REFER TO ELECTRICAL DRAWINGS
- ALL FLOOR DRAINS AND FLOOR SINKS SHOWN ARE FOR REFERENCE ONLY. REFER TO ARCHITECTURAL AND PLUMBING DRAWINGS
- COORDINATE ALL DRAINS NEEDED FOR SPECIFIC EQUIPMENT WITH THE EQUIPMENT MANUFACTURERS

KEYNOTES

PROJECT NORTH

TRUE NORTH

11°

FULLY SPRINKLERED
CONSTRUCTION DOCUMENTS

CONSULTANTS:		Seals and Signatures		ARCHITECT/ENGINEERS:		Drawing Title		Project Title		Project Number	
						LEVEL 2 AREA E ENLARGED LABORATORY PLAN		CENTERS FOR AMBULATORY CARE, POLYTRAUMA AND BLIND REHABILITATION RESEARCH AND VMU		710	
						Approved: Project Director		Location		Drawing Number	
						William Wilson		3801 Miranda Ave., Palo Alto CA		QL2.4.5	
								Date		Checked	
								30 JULY 2015		VC	
										Drawn	
										LF	

Office of
Construction
and Facilities
Management

Department of
Veterans Affairs