

GENERAL NOTES:

1. INTERRUPTION OF THE WATER, MEDICAL GASES AND OTHER UTILITIES/SERVICE, TO THE MAIN BUILDING #7 SHALL BE KEPT TO A MINIMUM, AND NOT TO EXCEED 4 HOURS AT ANY GIVEN TIME WITH PRIOR APPROVAL FROM THE PROJECT MANAGER/COTR.
2. COORDINATE SYSTEM SHUTDOWNS WITH FACILITY PERSONNEL, AND SUBMIT SHUTDOWN AND START-UP PLAN FOR REVIEW.
3. SHUTDOWNS MAY REQUIRE TO BE PERFORMED DURING NIGHT, WEEKENDS OR OFF HOURS UNLESS INSTRUCTED OTHERWISE WITHOUT ANY EXTRA PREMIUM.

KEYED NOTES:

- 3 P.O.C. CONNECT (N) 1" O2 TO (E) OXYGEN LINE AND ROUTE U.G. TO EXTERIOR WALL, UP WALL TO ROOF AND ACROSS ROOF AS NOTED (FIELD VERIFY ROUTING) TO BLDG. 7G.
- 4 P.O.C. CONNECT (N) 1 1/2" MV TO (E) MV LINE. REFER TO PARTIAL PLAN A. ROUTE (N) 1 1/2" MV ACROSS ROOF AS NOTED (FIELD VERIFY ROUTING) TO BLDG. 7G.
- 5 P.O.C. CONNECT (N) 1" MA TO (E) MA LINE. REFER TO PARTIAL PLAN A. ROUTE (N) 1" MA ACROSS ROOF AS NOTED (FIELD VERIFY ROUTING) TO BLDG. 7G.
- 6 PROVIDE FLEXIBLE CONNECTOR WHEREVER PIPING CROSSES BLDG. SEISMIC JOINT. PIPE RISES OVER SEISMIC JOINTS.

1 PLUMBING - EXISTING ROOF PLAN

007 PL1.0 SCALE: 1/32" = 1'-0"

KEYED NOTES:

- 1 P.O.C. CONNECT (N) 1 1/2" HW TO (E) HW LINE AND (N) 3/4" HWR TO (E) HWR. PROVIDE HWR WITH CIRCUIT SETTER AND SET TO 4 GPM.
- 2 (N) 1 1/2" HW & 3/4" HWR THRU EXTERIOR WALL, UP SIDE OF BUILDING AND ONTO ROOF.

2 PLUMBING - EXISTING BASEMENT PLAN

007 PL1.0 SCALE: 1/32" = 1'-0"

3 PLUMBING - SITE PLAN

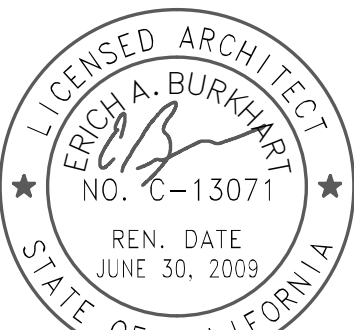
007 PL1.0 SCALE: 1/16" = 1'-0"

CONSTRUCTION DOCUMENTS
FULLY SPRINKLERED

CONSULTANTS:

m+nib
MAZZETTI NASH LIPSEY BURCH

TEL: 916.979.4890
FAX: 916.979.4895
www.mazzetti.com
PROJECT NUMBER: 101-006
COPYRIGHT © 2010 MAZZETTI NASH LIPSEY BURCH, INC.
ALL RIGHTS RESERVED WORLDWIDE



ARCHITECT/ENGINEERS:

Lee, Burkhardt, Liu, Inc.
Architecture, Planning, Interiors
149 New Montgomery Street, 5th Floor
San Francisco, California 94105
Phone (415) 671-4342 Fax (415) 671-4610

Drawing Title

PLUMBING SITE PLANS

Approved Project Director

Date:

Project Title

VA Palo Alto Healthcare System
Spinal Cord Injury Replacement
Unit

Location

3801 Miranda Avenue, Palo Alto

Date

07-10-2015

Checked

TB

Drawn

NT

Project Number

640-380

Building Number

007

Drawing Number

007 PL 1.0

DATE: 07-10-2015

Office of
Facilities
Management

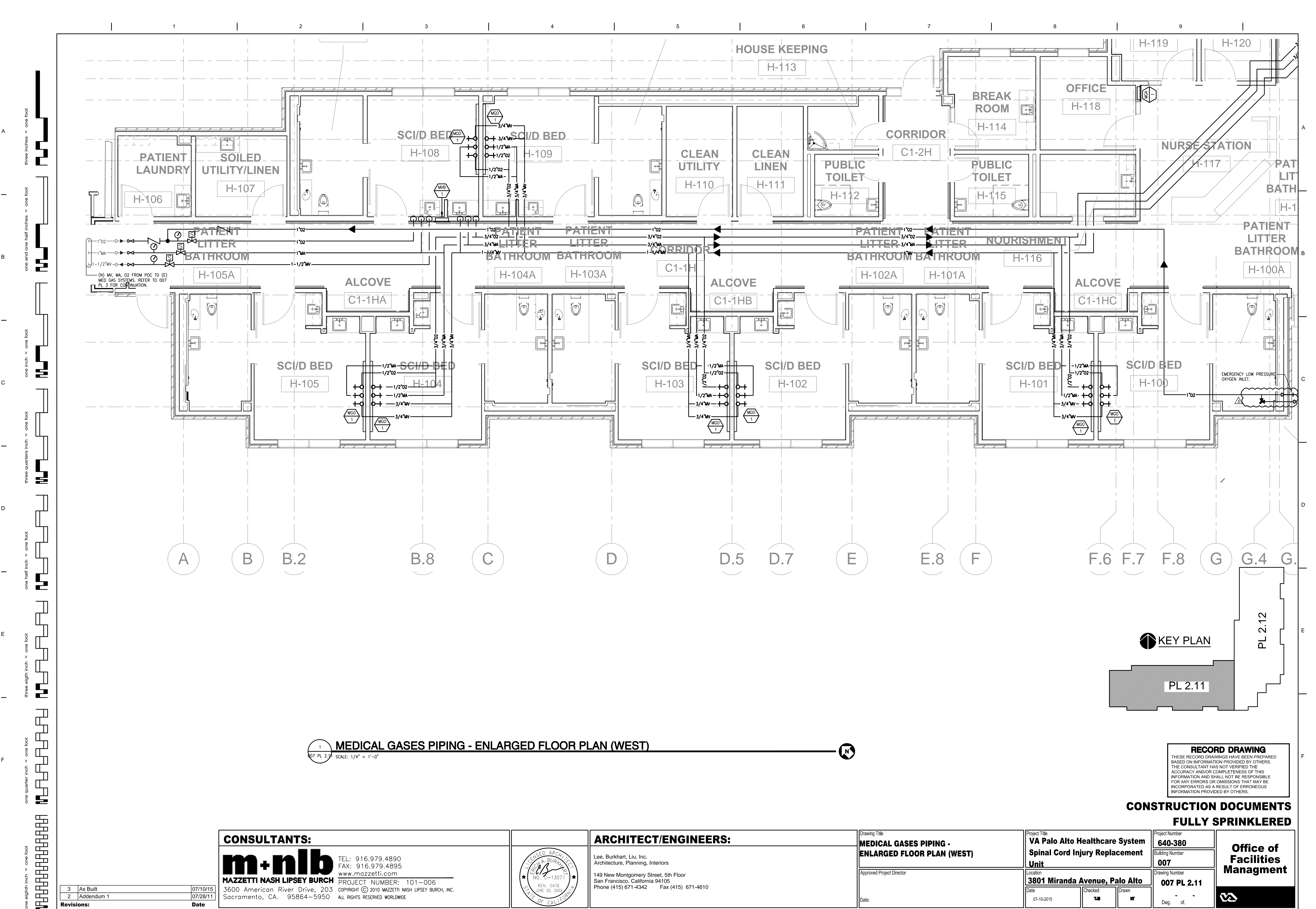
Department of
Veterans Affairs

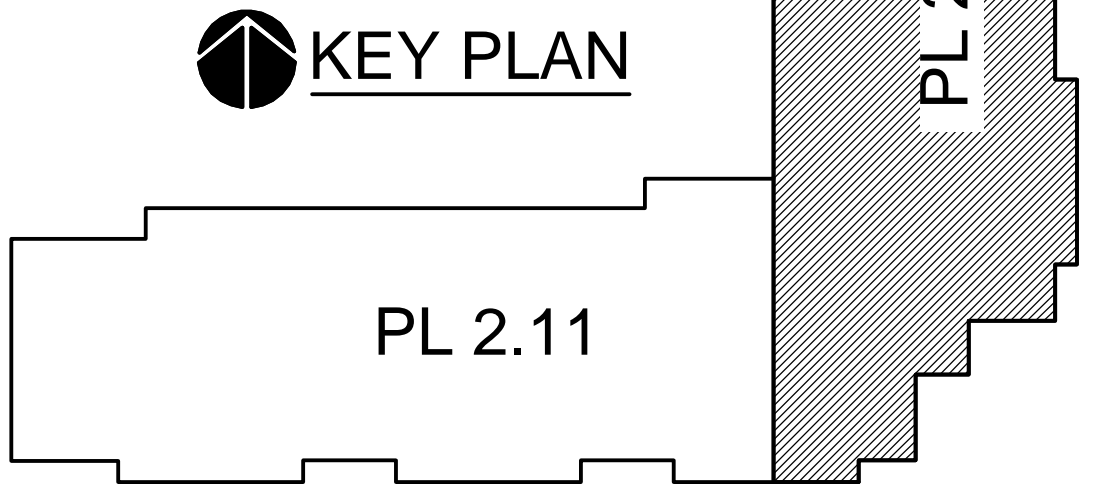
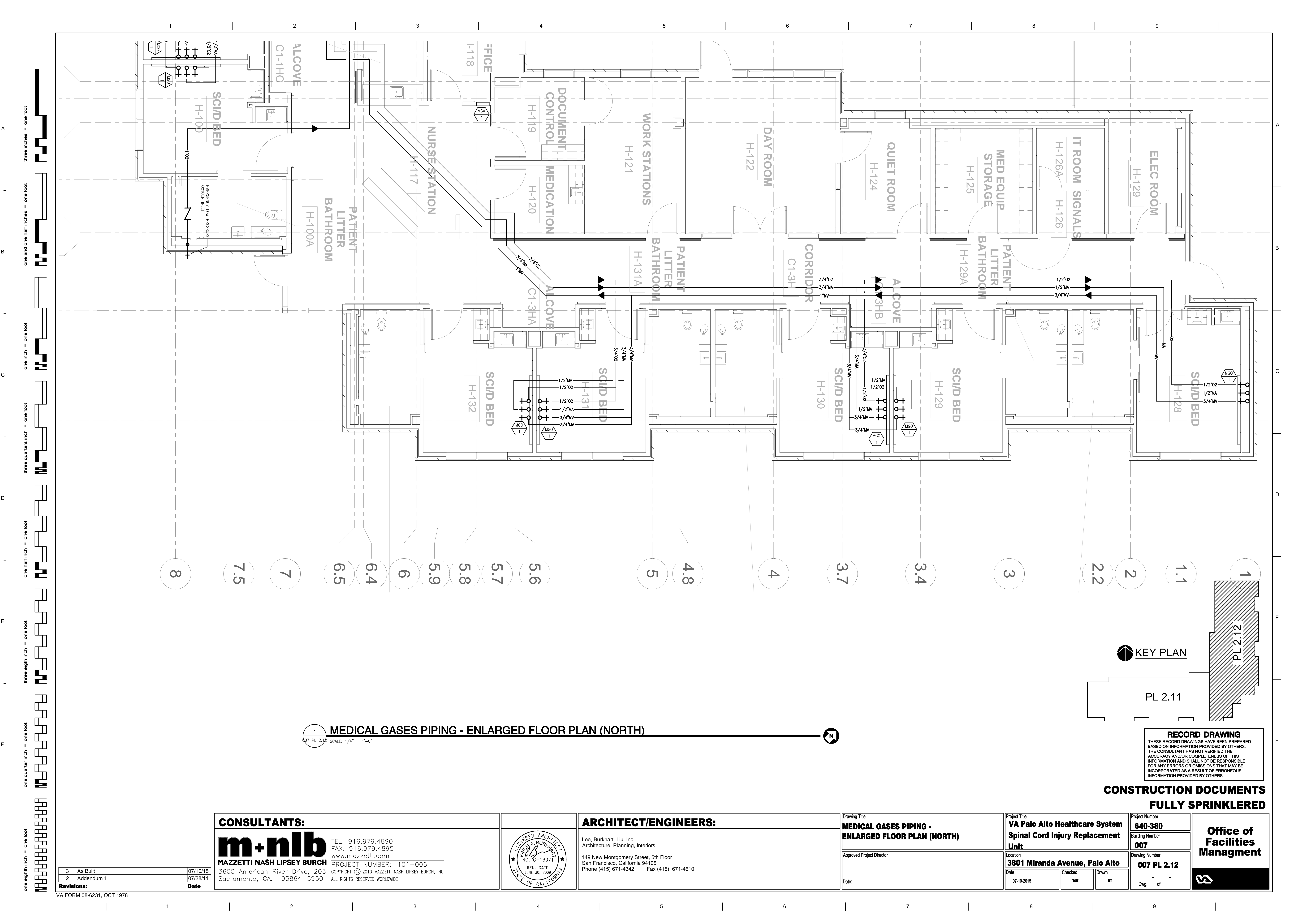
3	As Built	07/10/15
2	Addendum 1	07/28/11

Revisions:

Date

VA FORM 08-6231, OCT 1978





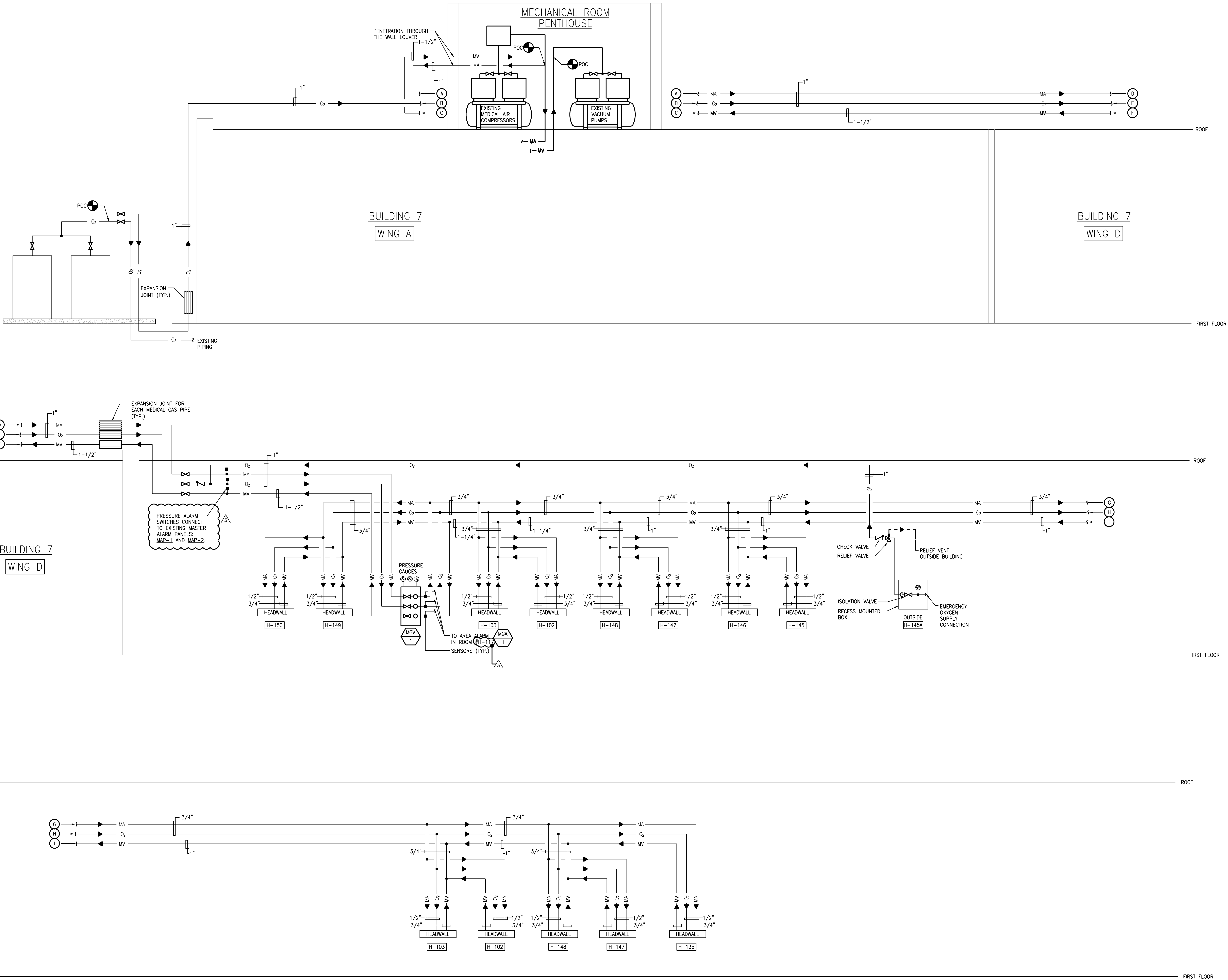
RECORD DRAWING
THESE RECORD DRAWINGS HAVE BEEN PREPARED
BASED ON INFORMATION PROVIDED BY OTHERS.
THE CONSULTANT HAS NOT VERIFIED THE
ACCURACY AND/OR COMPLETENESS OF THIS
INFORMATION AND SHALL NOT BE RESPONSIBLE
FOR ANY ERRORS OR OMISSIONS THAT MAY BE
INCORPORATED AS A RESULT OF ERRONEOUS
INFORMATION PROVIDED BY OTHERS.

**CONSTRUCTION DOCUMENTS
FULLY SPRINKLERED**

CONSULTANTS: m+n b MAZZETTI NASH LIPSEY BURCH 3600 American River Drive, 203 Sacramento, CA. 95864-5950 TEL: 916.979.4890 FAX: 916.979.4895 www.mazzetti.com PROJECT NUMBER: 101-006 COPYRIGHT © 2010 MAZZETTI NASH LIPSEY BURCH, INC. ALL RIGHTS RESERVED WORLDWIDE			 ARCHITECT/ENGINEERS: Lee, Burkhardt, Liu, Inc. Architecture, Planning, Interiors 149 New Montgomery Street, 5th Floor San Francisco, California 94105 Phone (415) 671-4342 Fax (415) 671-4610			Drawing Title MEDICAL GASES PIPING - ENLARGED FLOOR PLAN (NORTH) Approved Project Director Date:	Project Title VA Palo Alto Healthcare System Spinal Cord Injury Replacement Unit Location 3801 Miranda Avenue, Palo Alto Date 07-10-2015 Checked TJB Drawn NT	Project Number 640-380 Building Number 007 Drawing Number 007 PL 2.12 Dwg. of	Office of Facilities Management
---	--	--	---	--	--	---	--	--	--

three inches = one foot
one and one half inches = one foot
one inch = one foot
three quarters inch = one foot
one half inch = one foot
one quarter inch = one foot
one eighth inch = one foot

A
B
C
D
E
F



RECORD DRAWING
THESE RECORD DRAWINGS HAVE BEEN PREPARED
BASED ON INFORMATION PROVIDED BY OTHERS.
THE CONSULTANT HAS NOT VERIFIED THE
ACCURACY AND/OR COMPLETENESS OF THIS
INFORMATION AND SHALL NOT BE RESPONSIBLE
FOR ANY ERRORS OR OMISSIONS THAT MAY BE
INCORPORATED AS A RESULT OF ERRONEOUS
INFORMATION PROVIDED BY OTHERS.

**CONSTRUCTION DOCUMENTS
FULLY SPRINKLERED**

3	As Built	07/10/15
2	Addendum 1	07/28/11

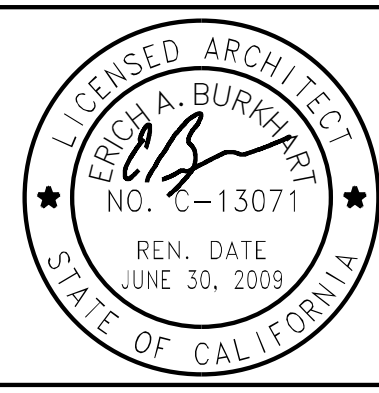
Revisions: Date

CONSULTANTS:

m+nib
MAZZETTI NASH LIPSEY BURCH

3600 American River Drive, 203
Sacramento, CA. 95864-5950

TEL: 916.979.4890
FAX: 916.979.4895
www.mazzetti.com
PROJECT NUMBER: 101-006
COPYRIGHT © 2010 MAZZETTI NASH LIPSEY BURCH, INC.
ALL RIGHTS RESERVED WORLDWIDE



ARCHITECT/ENGINEERS:

Lee, Burkhardt, Liu, Inc.
Architecture, Planning, Interiors
149 New Montgomery Street, 5th Floor
San Francisco, California 94105
Phone (415) 671-4342 Fax (415) 671-4610

Drawing Title
MEDICAL GAS PIPING DIAGRAM

Approved Project Director

Date:

Project Title
**VA Palo Alto Healthcare System
Spinal Cord Injury Replacement
Unit**

Location
3801 Miranda Avenue, Palo Alto

Date
07-10-2015

Checked
T.B.

Drawn
L.B.

Project Number
640-380
Building Number
007

Drawing Number
007 PL 4.3

Dwg. of.

**Office of
Facilities
Management**

