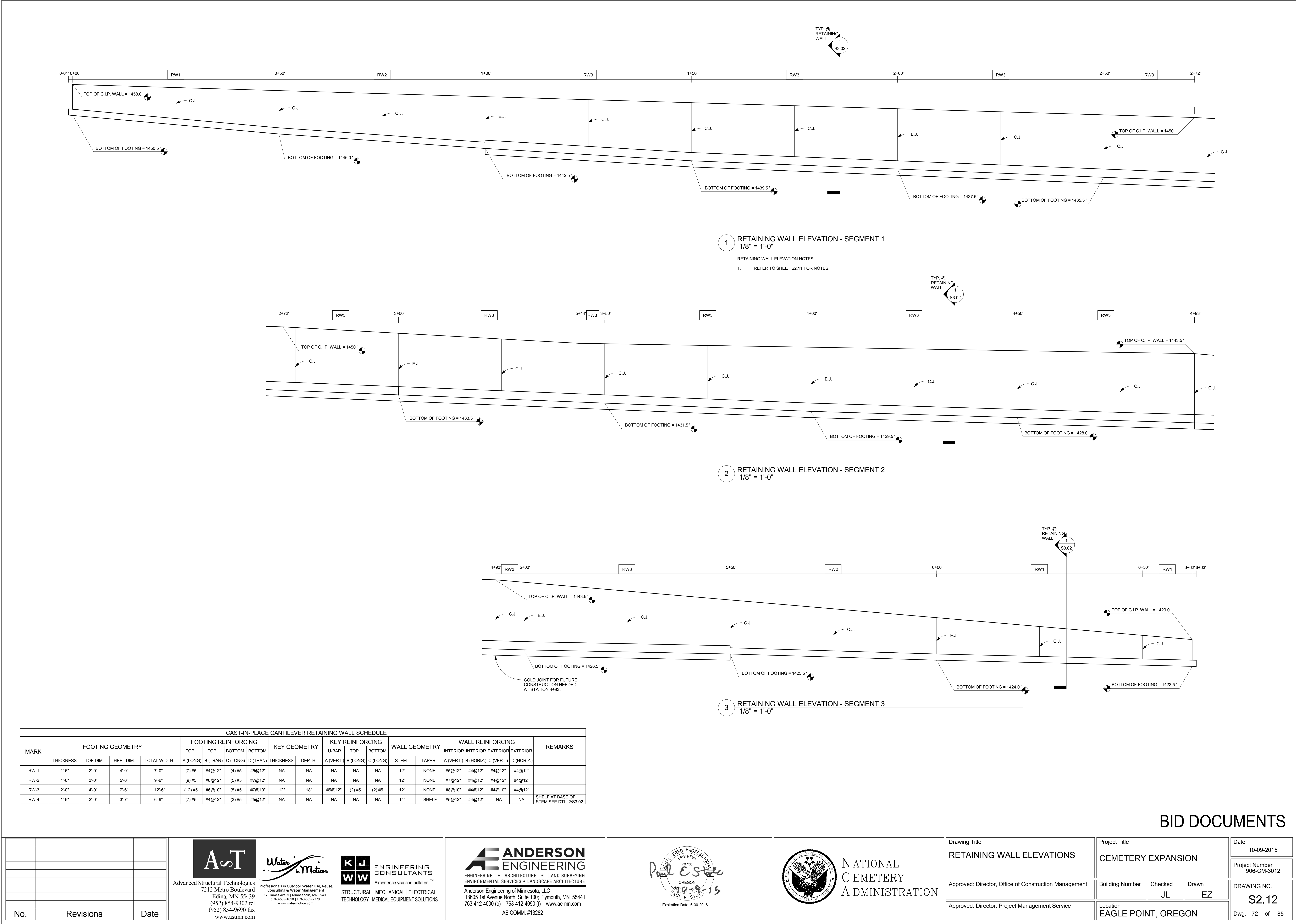
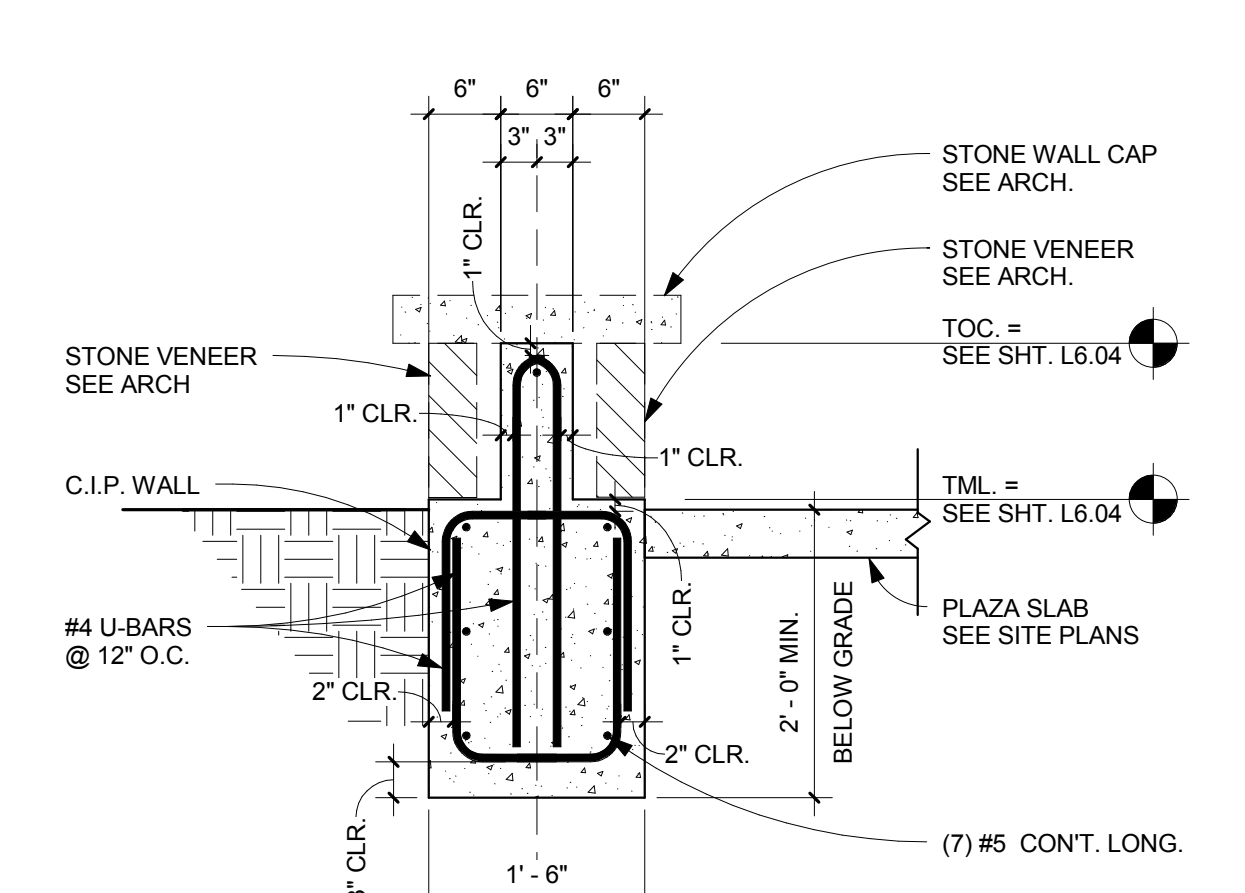
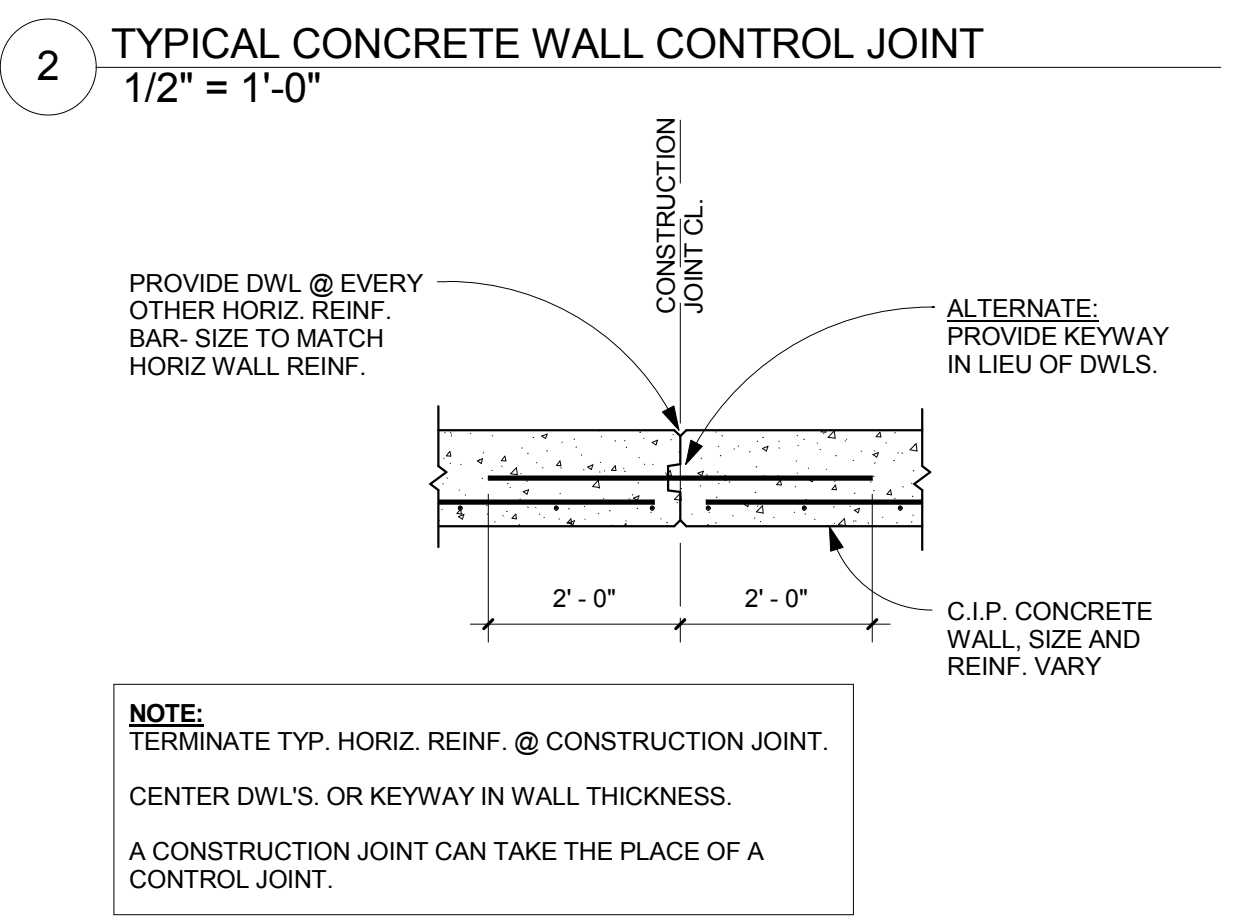
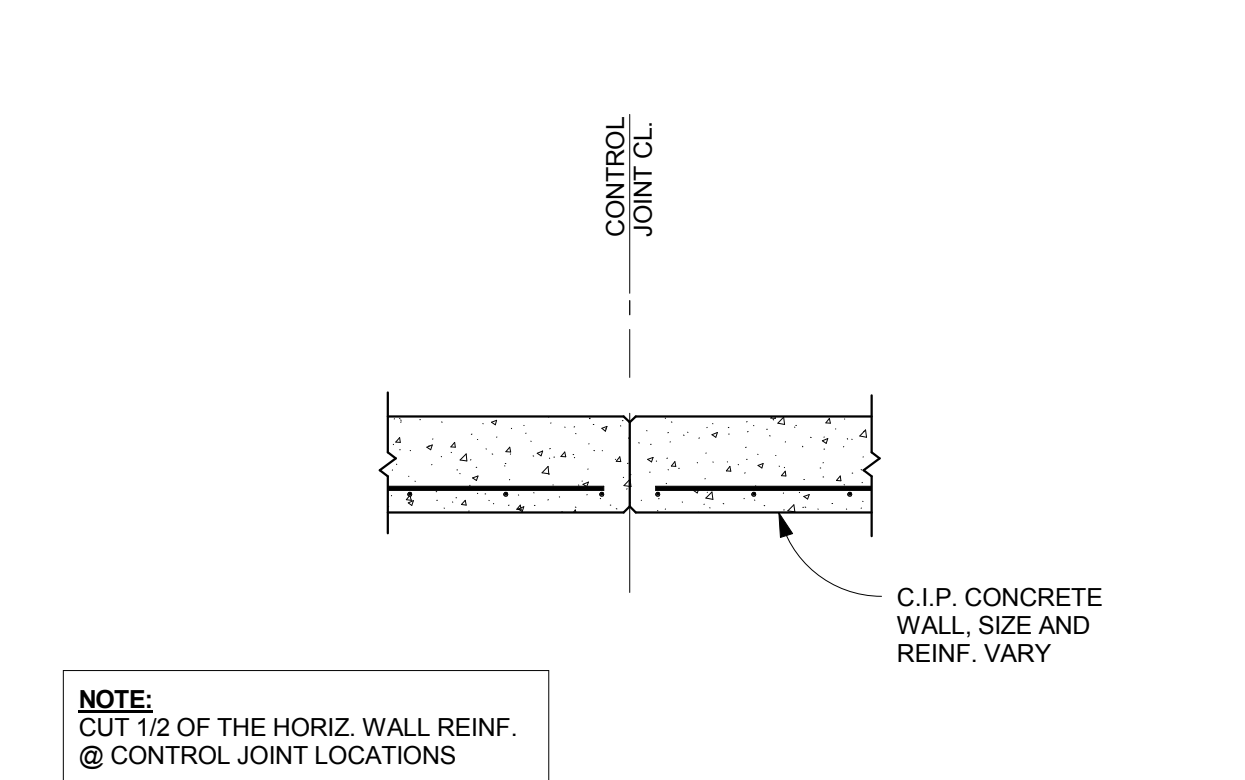
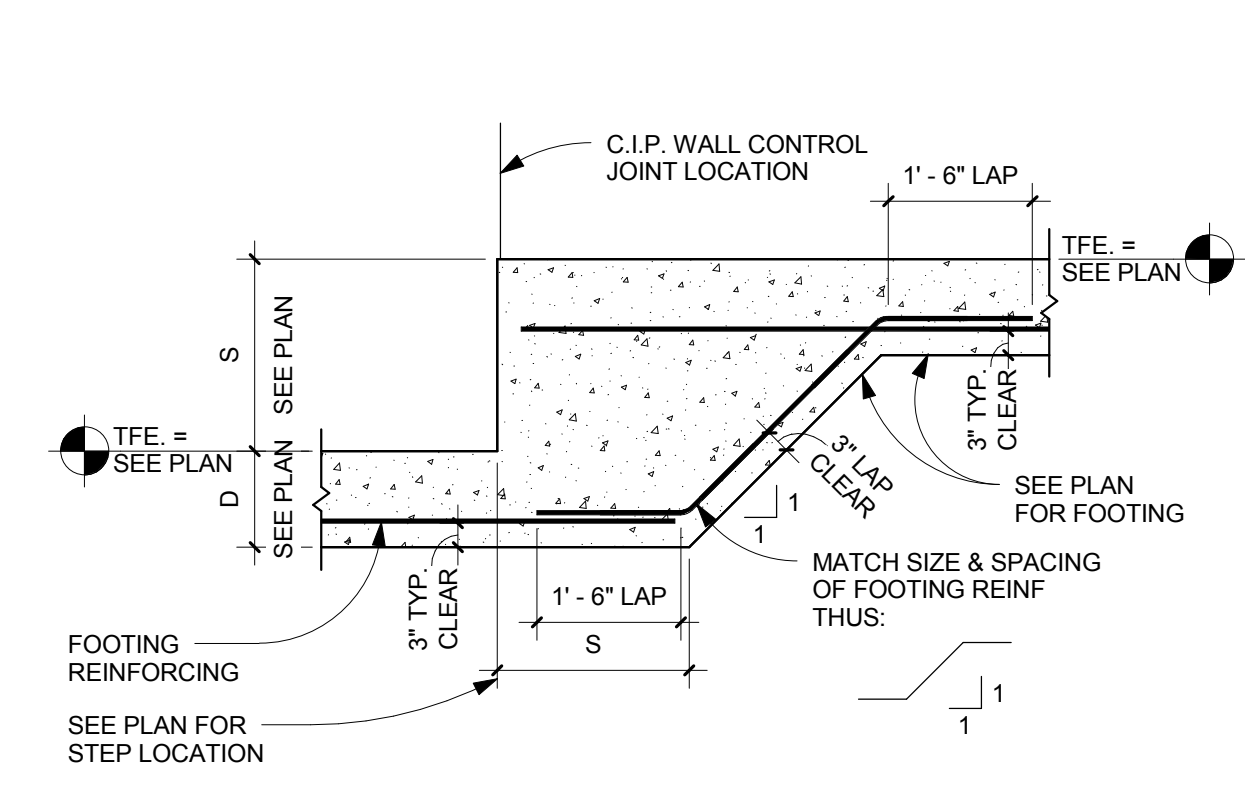
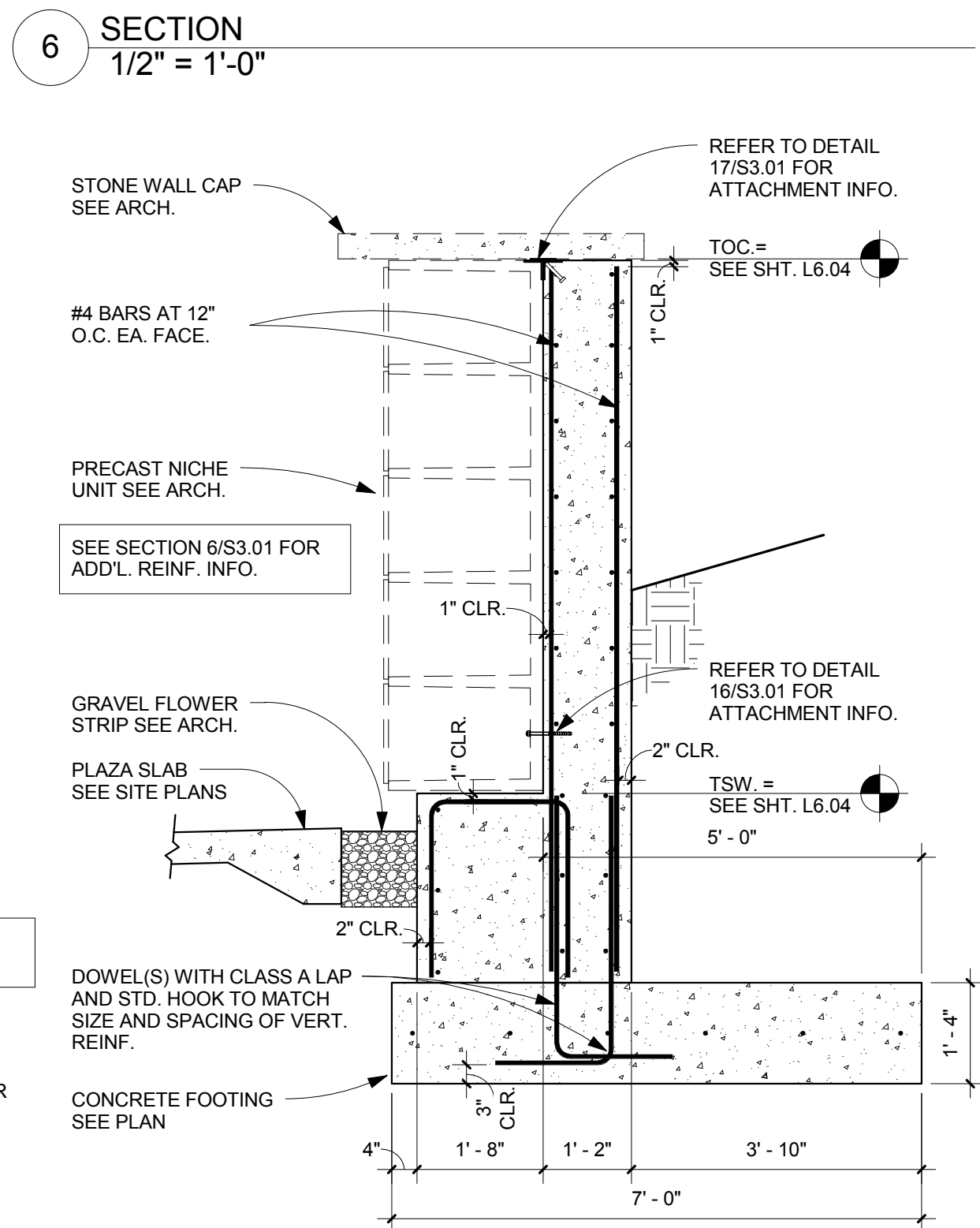
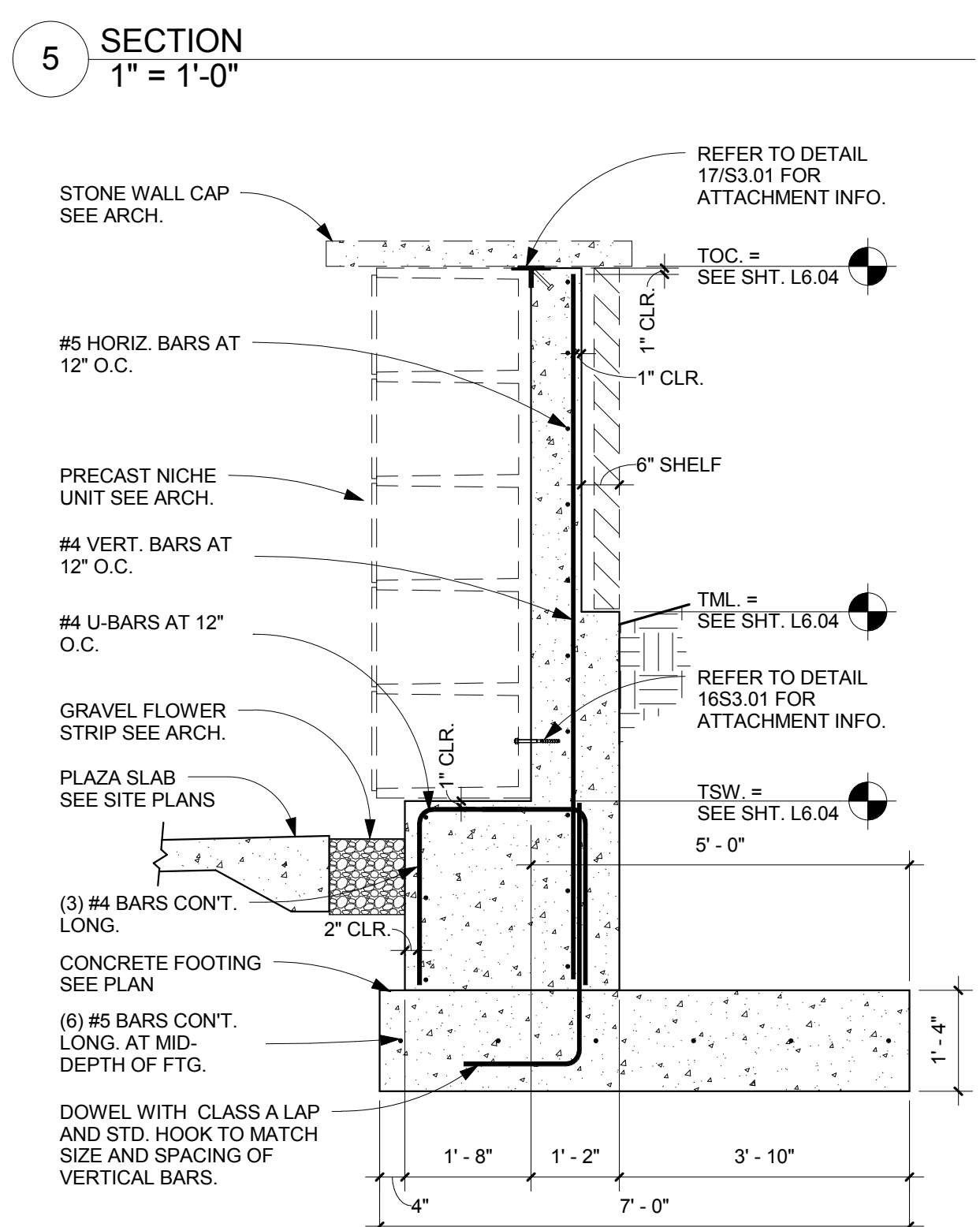
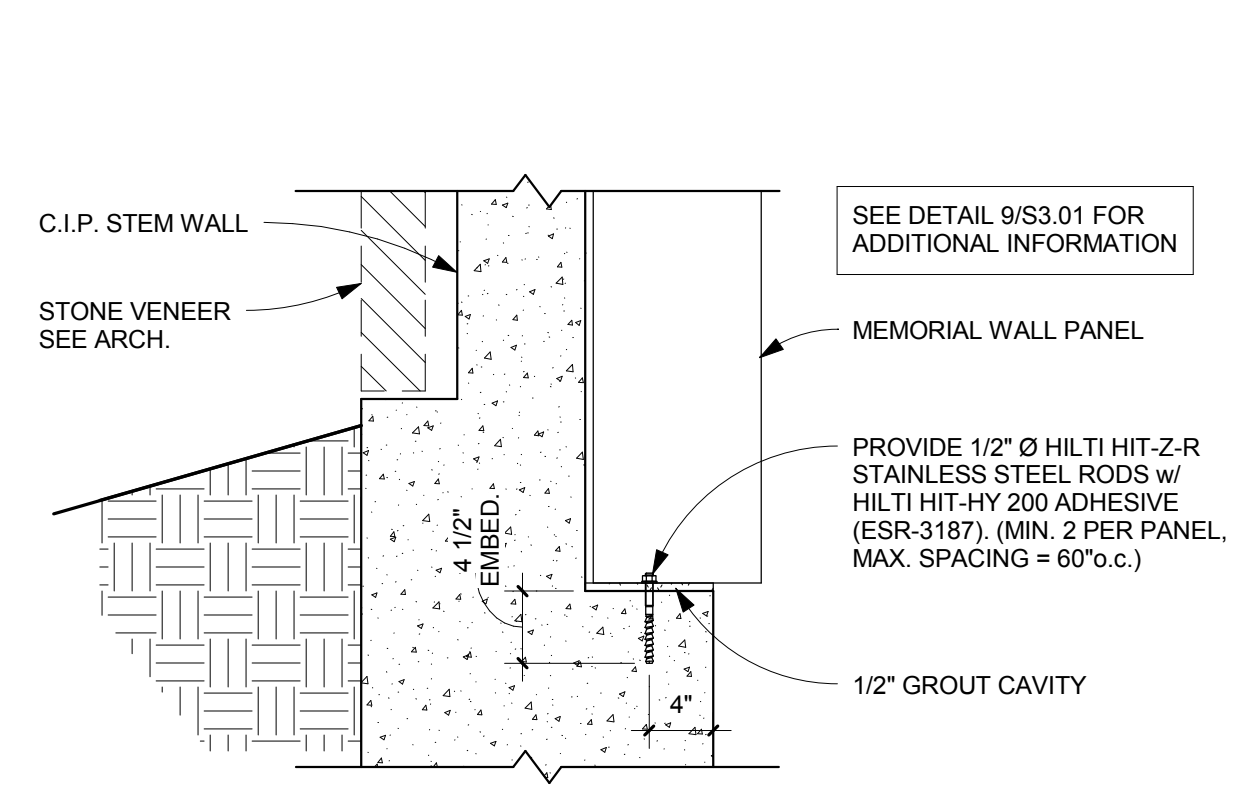
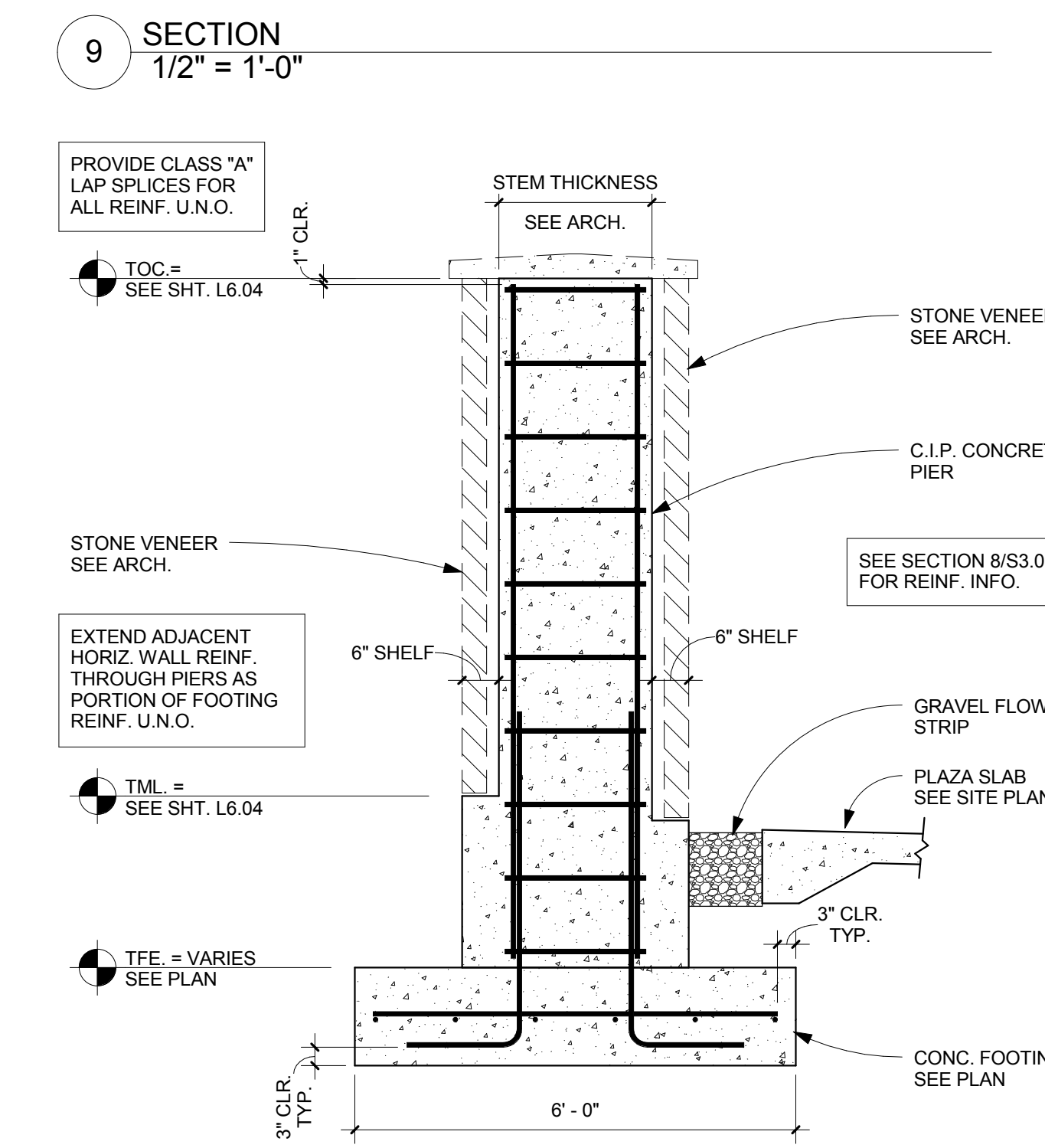
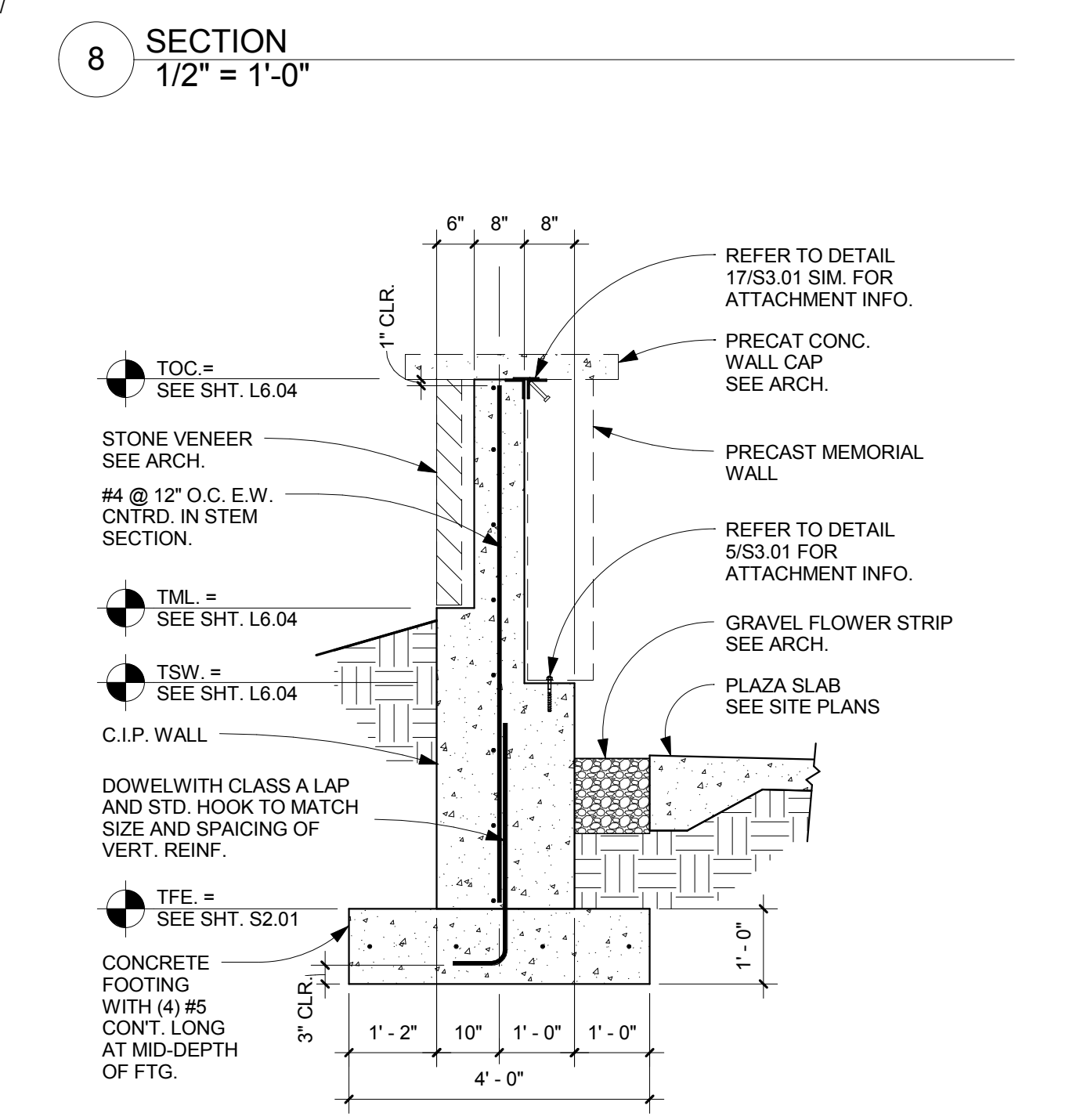
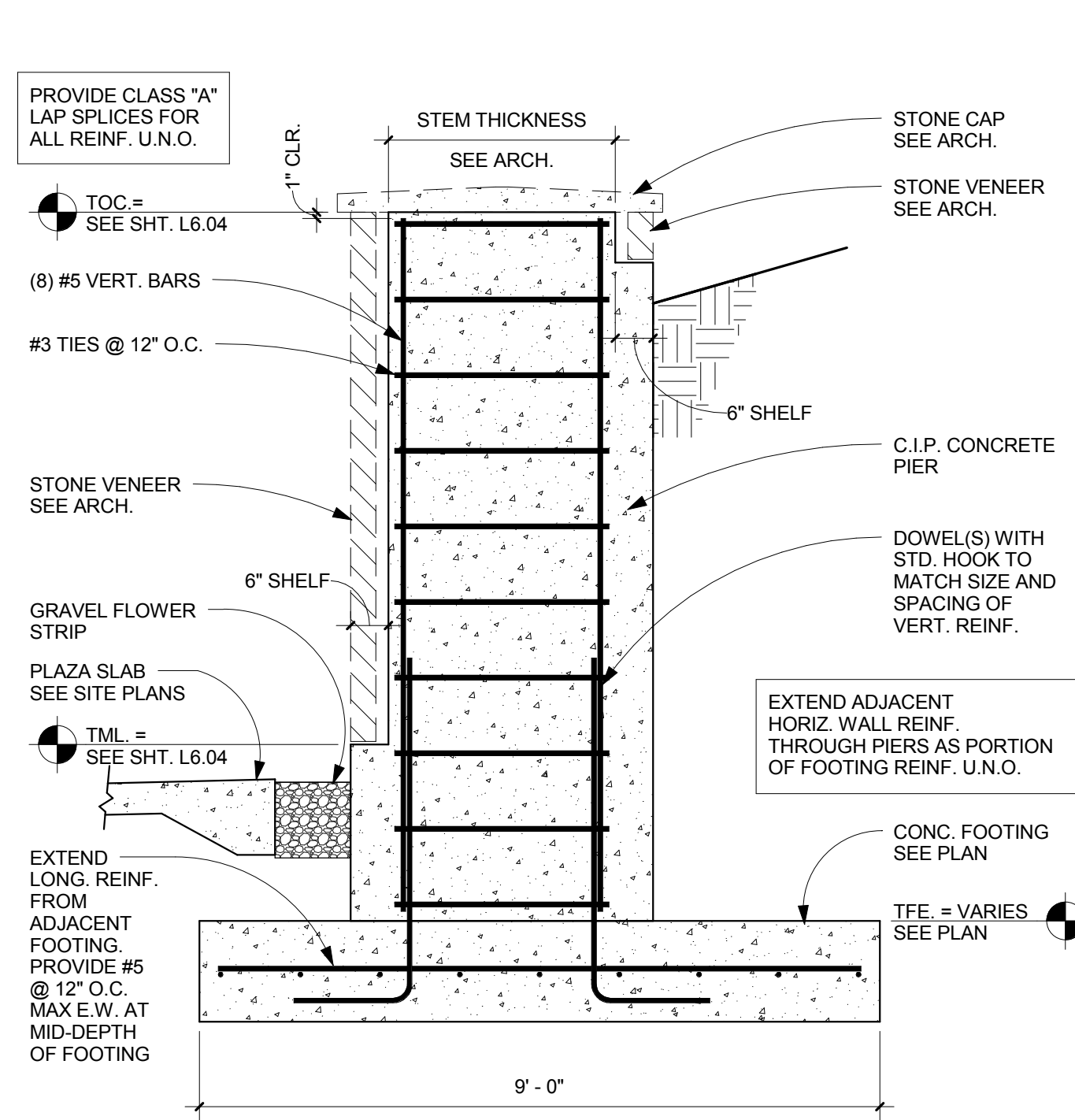
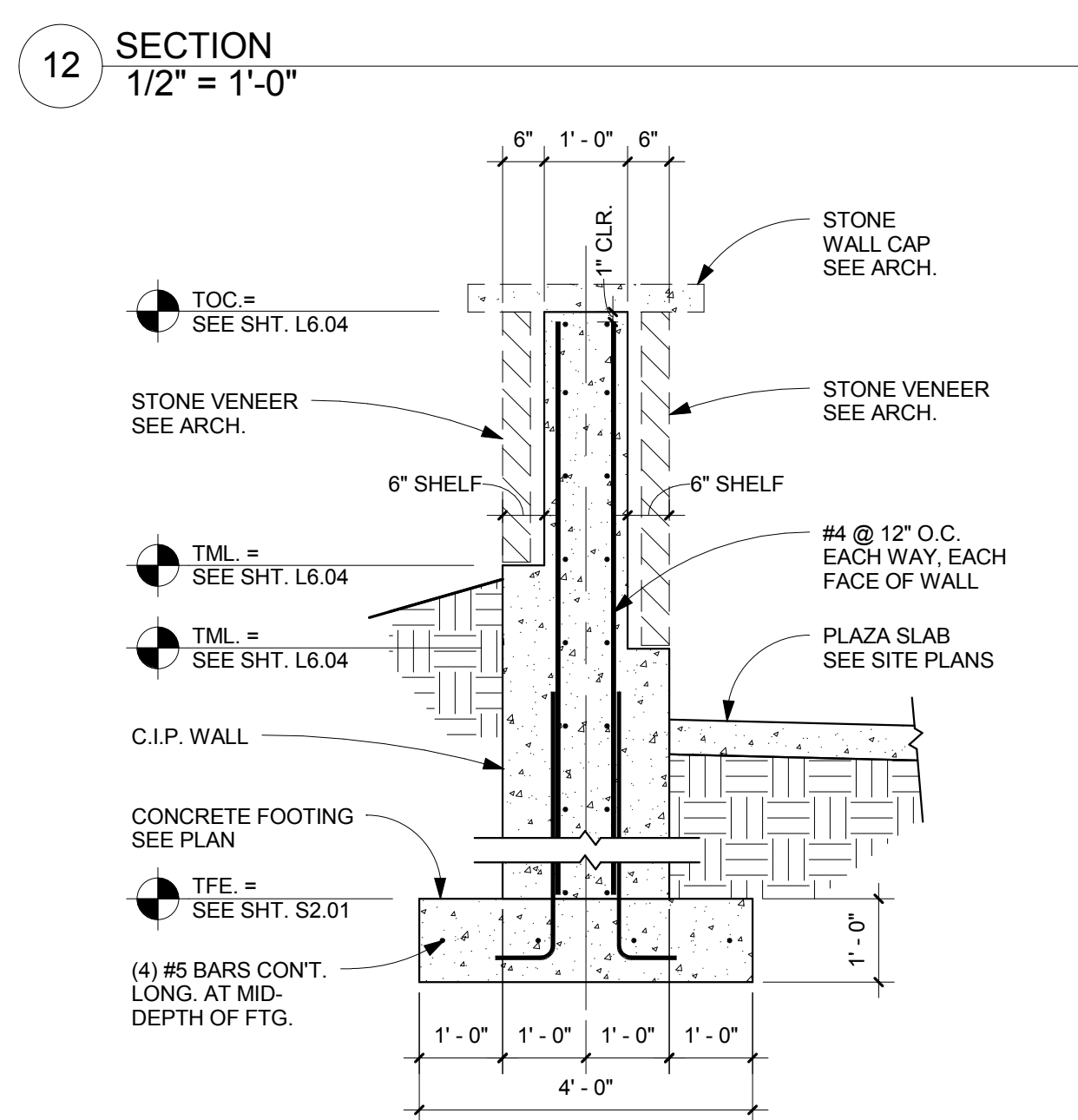
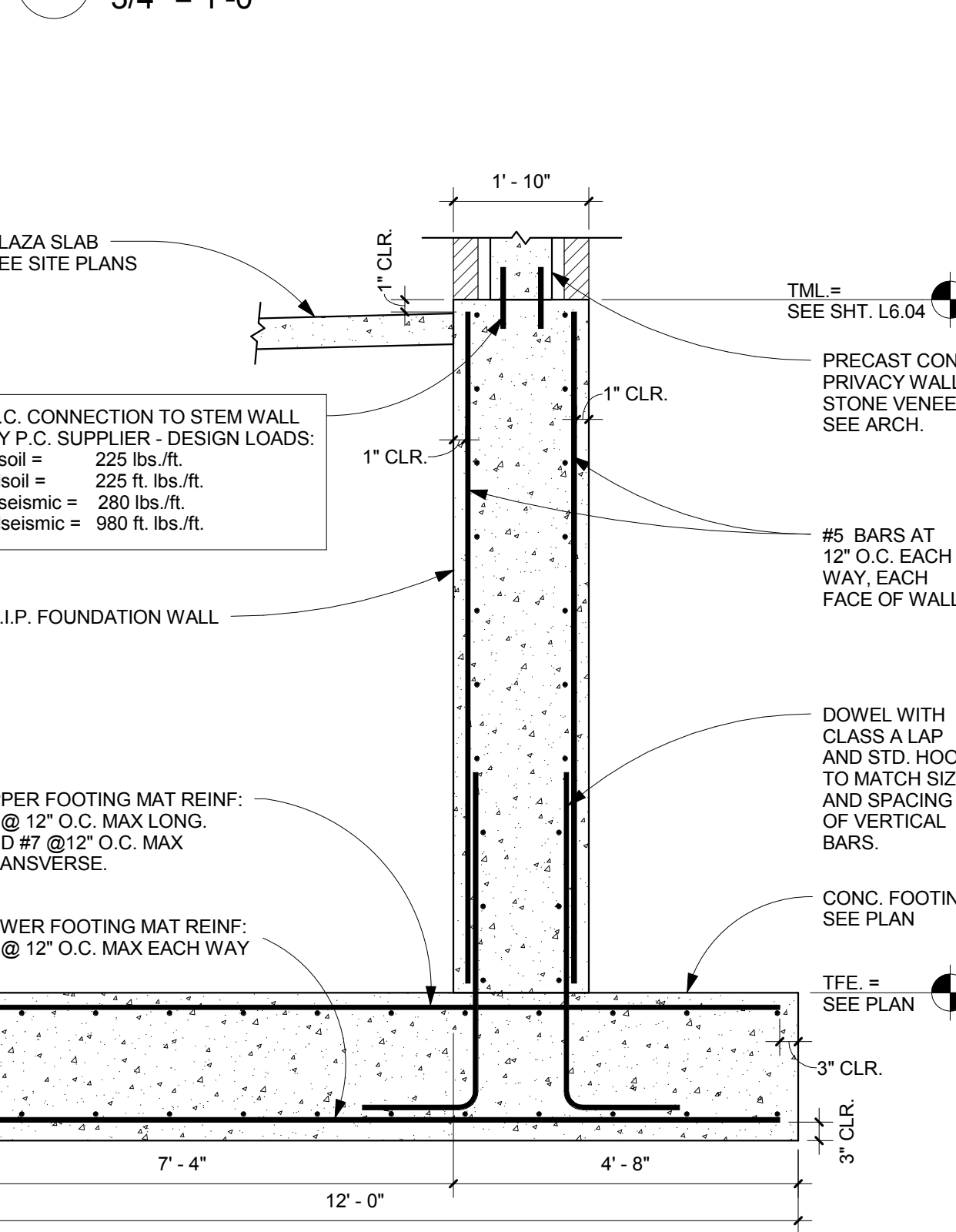
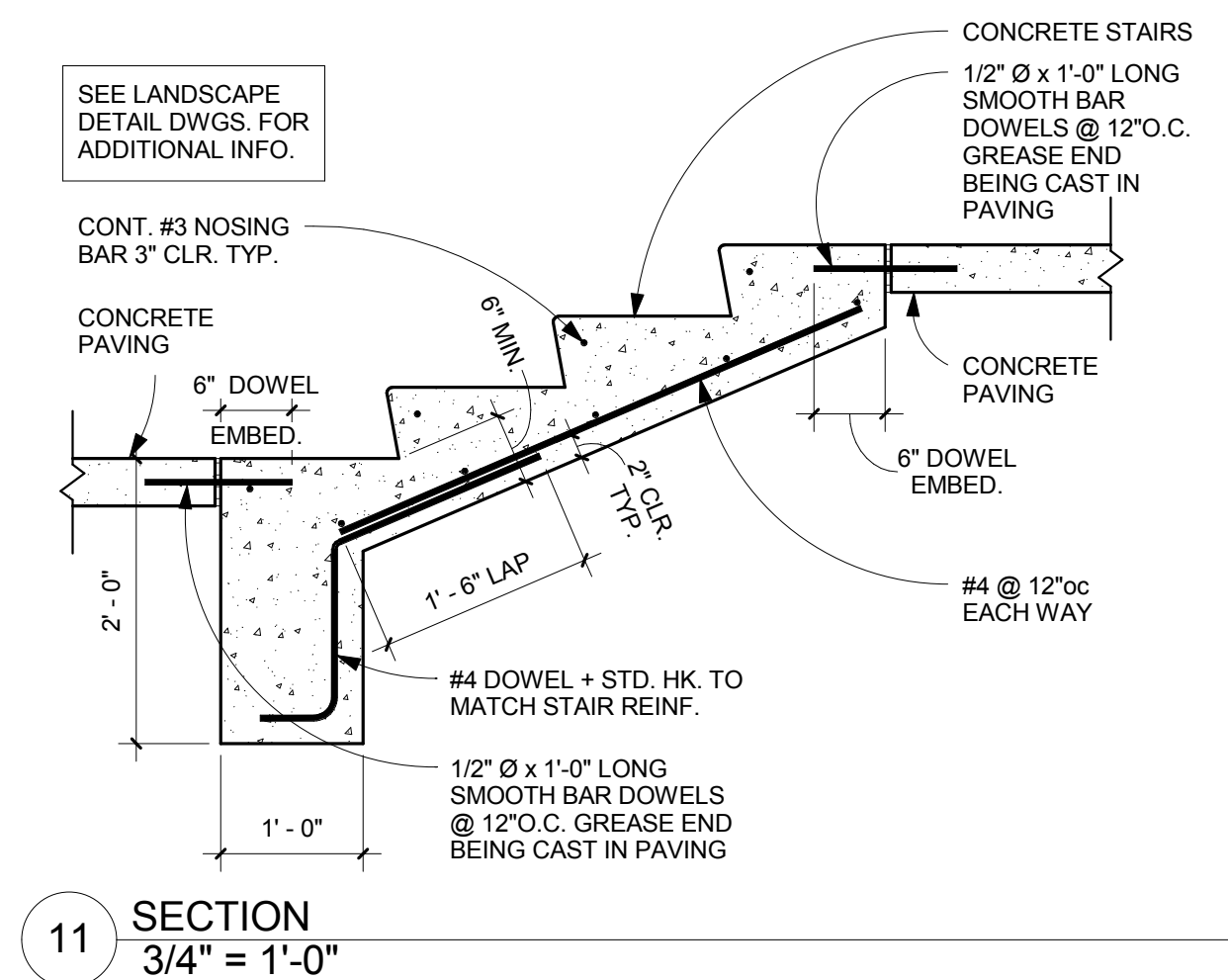
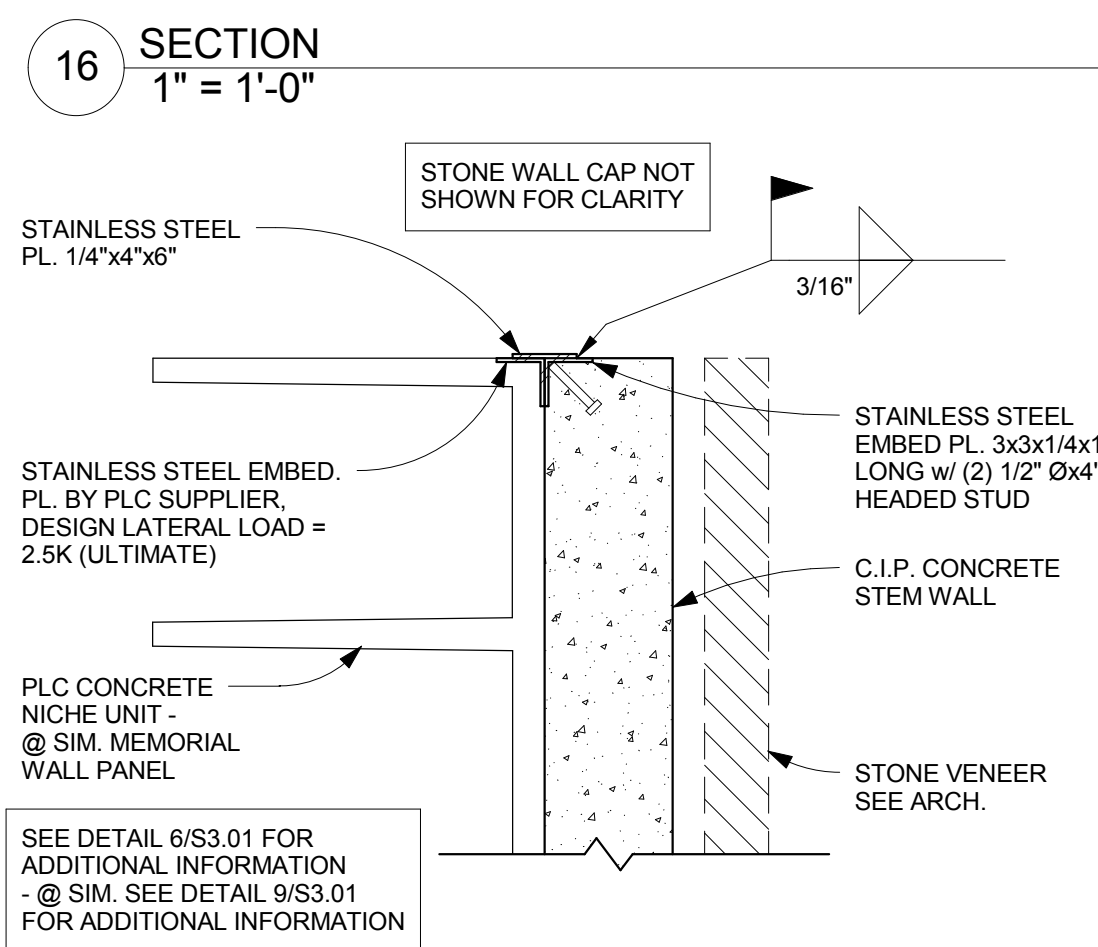
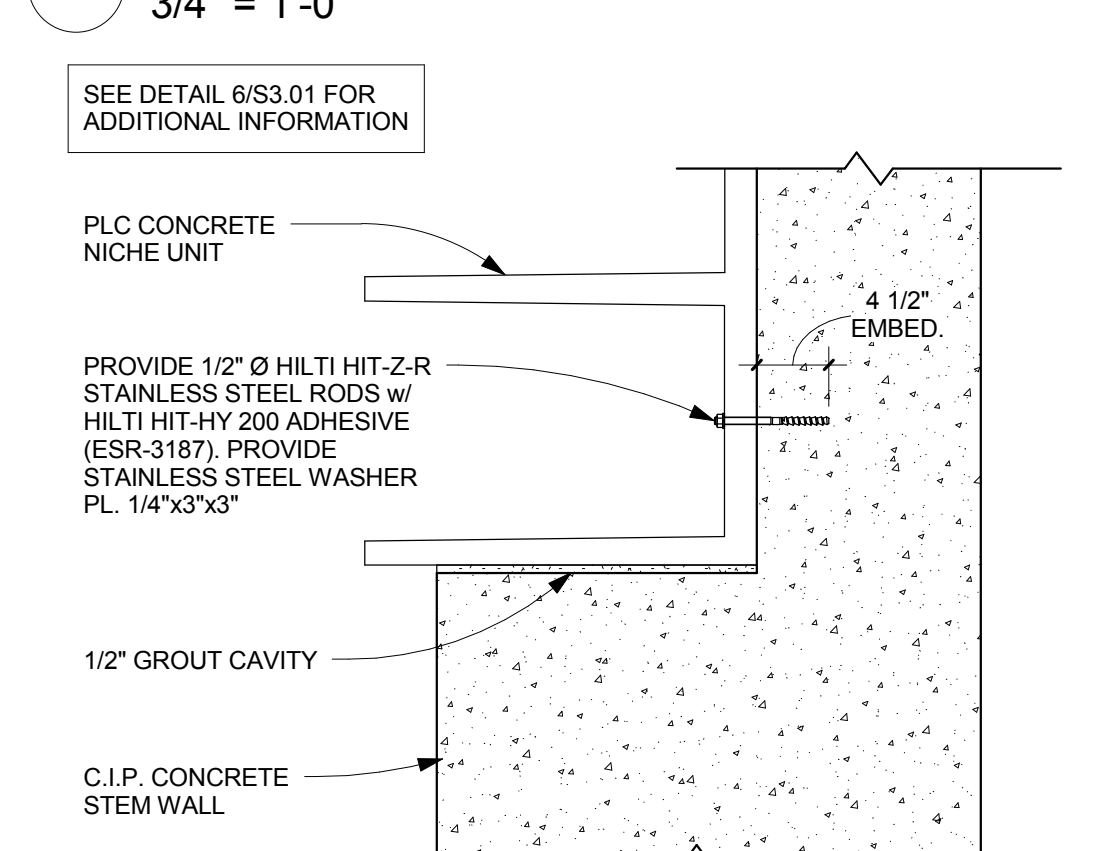
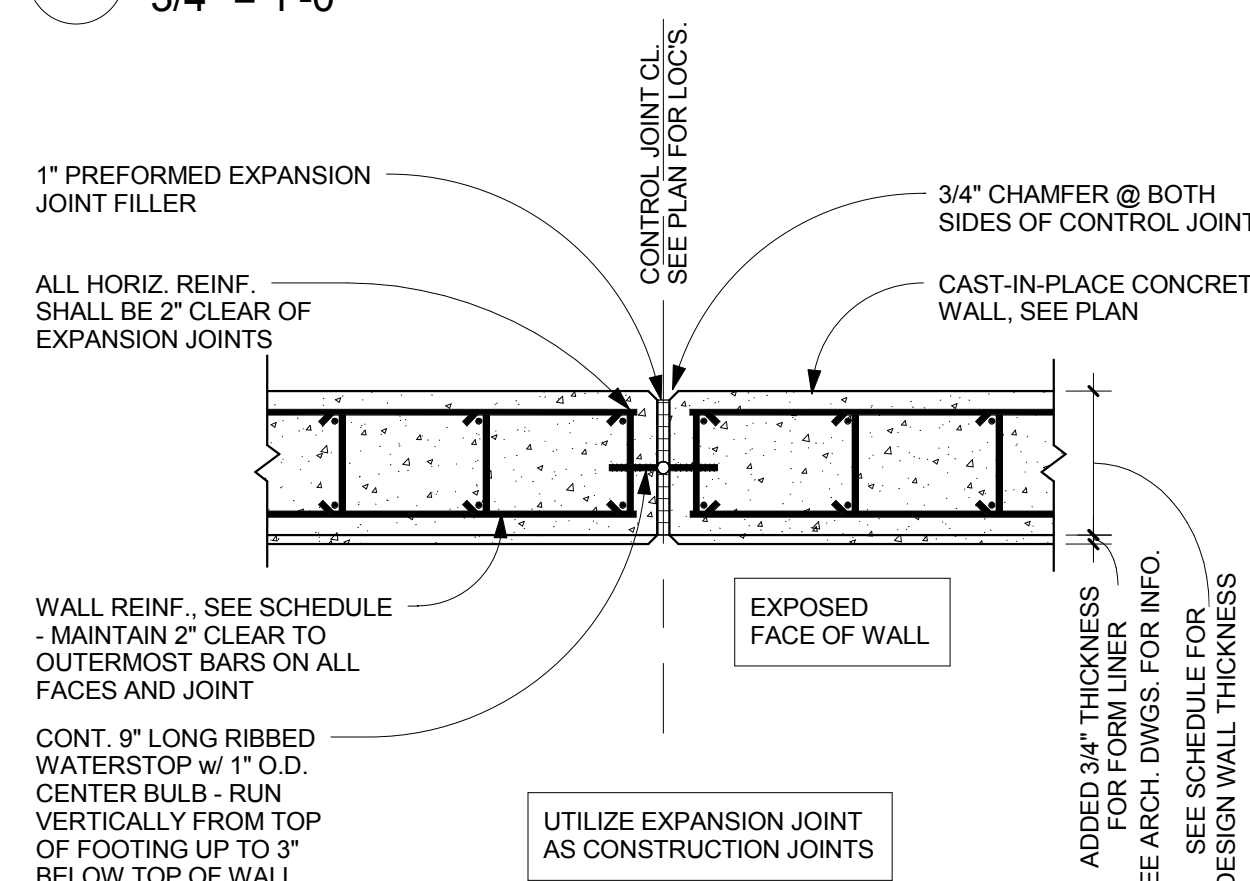
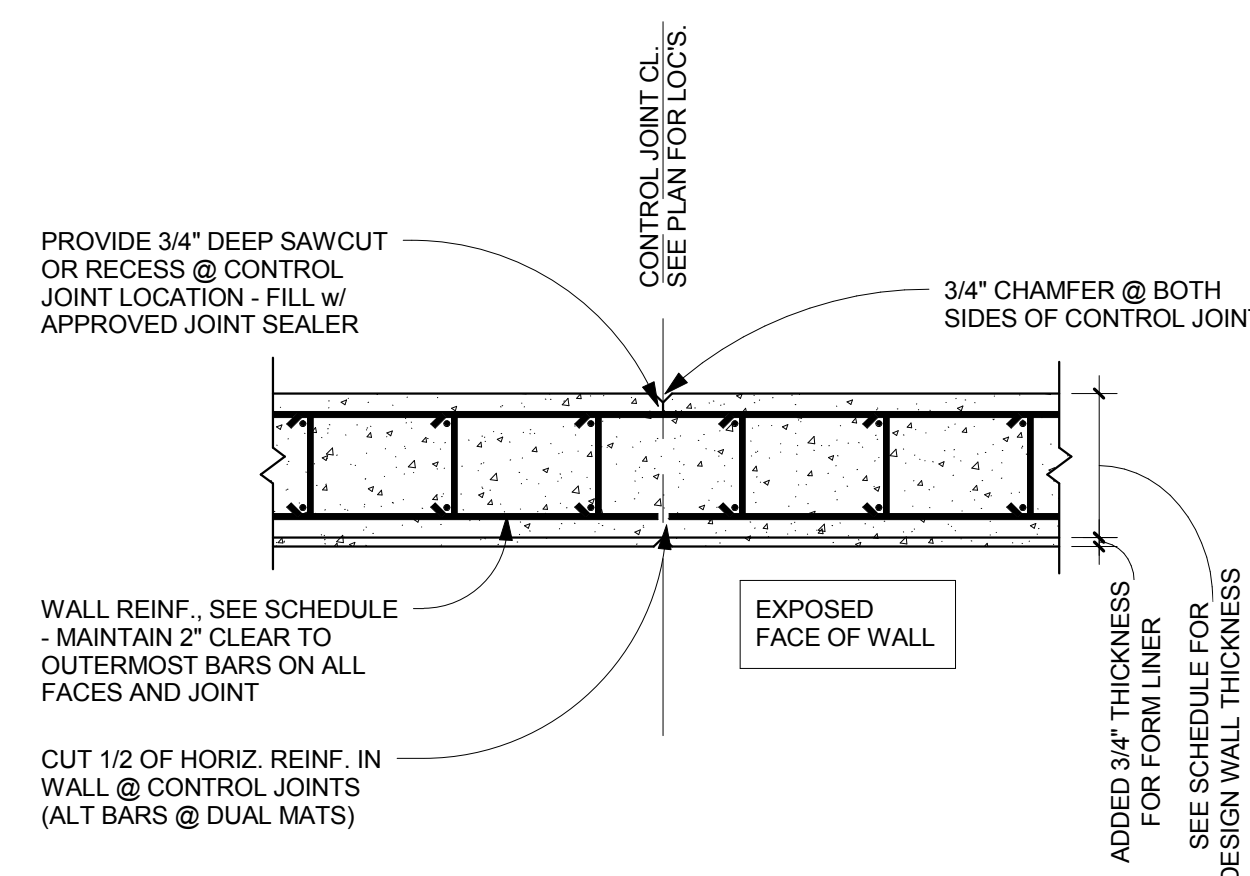
[illegible]





No.	Revisions	Date



Advanced Structural Technologies
7212 Metro Boulevard
Edina, MN 55439
(952) 854-9302 tel
(952) 854-9690 fax
www.astmn.com



Professionals in Outdoor Water Use, Reuse,
Consulting & Water Management
175 James Ave N | Minneapolis, MN 55405
p 763-559-1000 | f 763-559-7779
www.watermotion.com



**ENGINEERING
CONSULTANTS**
Experience you can build on[™]
**STRUCTURAL MECHANICAL ELECTRICAL
TECHNOLOGY MEDICAL EQUIPMENT SOLUTIONS**

ANDERSON
ENGINEERING

ENGINEERING • ARCHITECTURE • LAND SURVEYING
ENVIRONMENTAL SERVICES • LANDSCAPE ARCHITECTURE

Anderson Engineering of Minnesota, LLC
13605 1st Avenue North; Suite 100; Plymouth, MN 55441
763-412-4000 (o) 763-412-4090 (f) www.ae-mn.com

AE COMM. #13282

PAUL E. STOREY

REG. OREGON PROFESSIONAL ENGINEER


78736

OREGON

MA 12-19-15

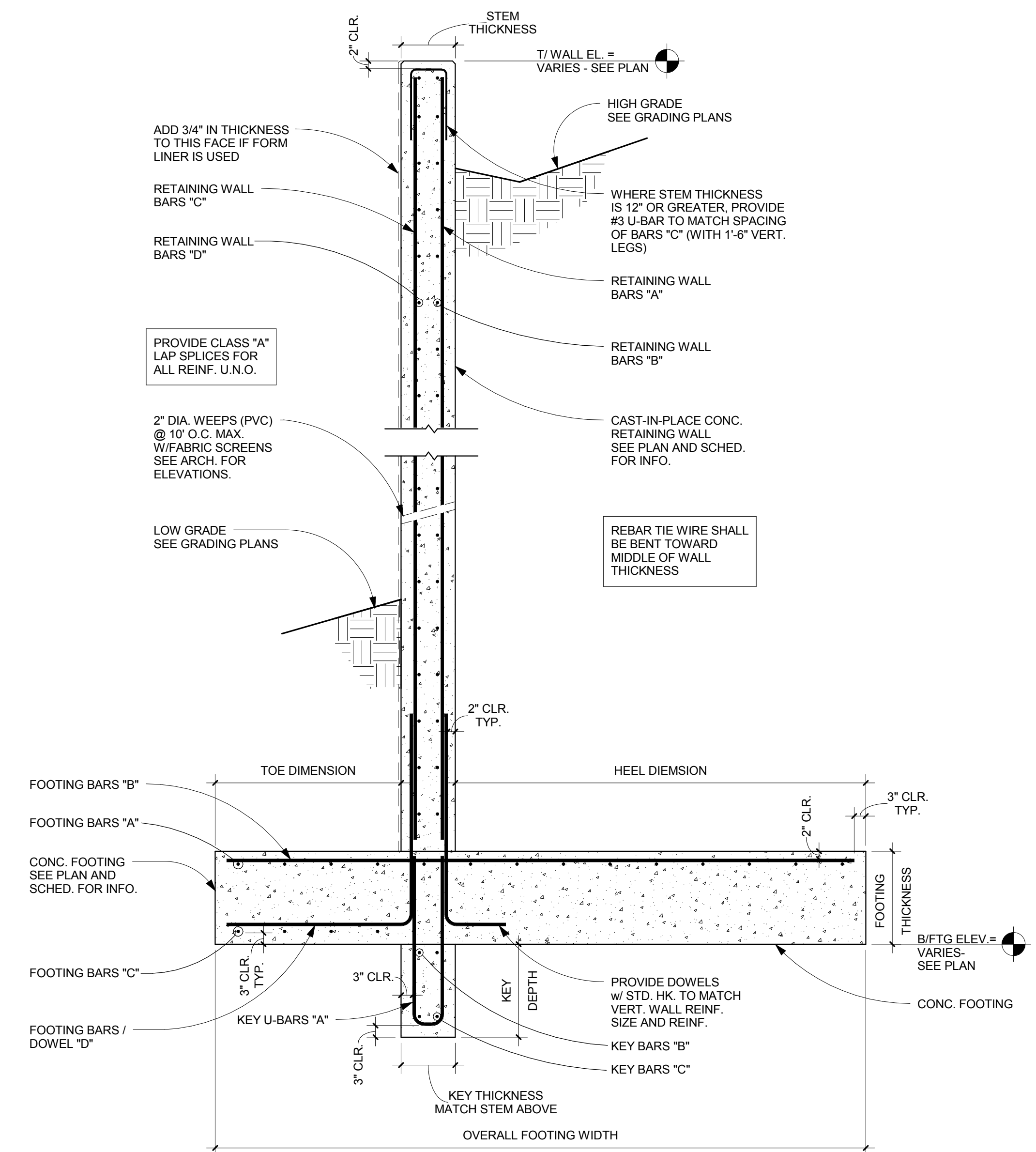
PAUL E. STOREY

Expiration Date: 6-30-2016

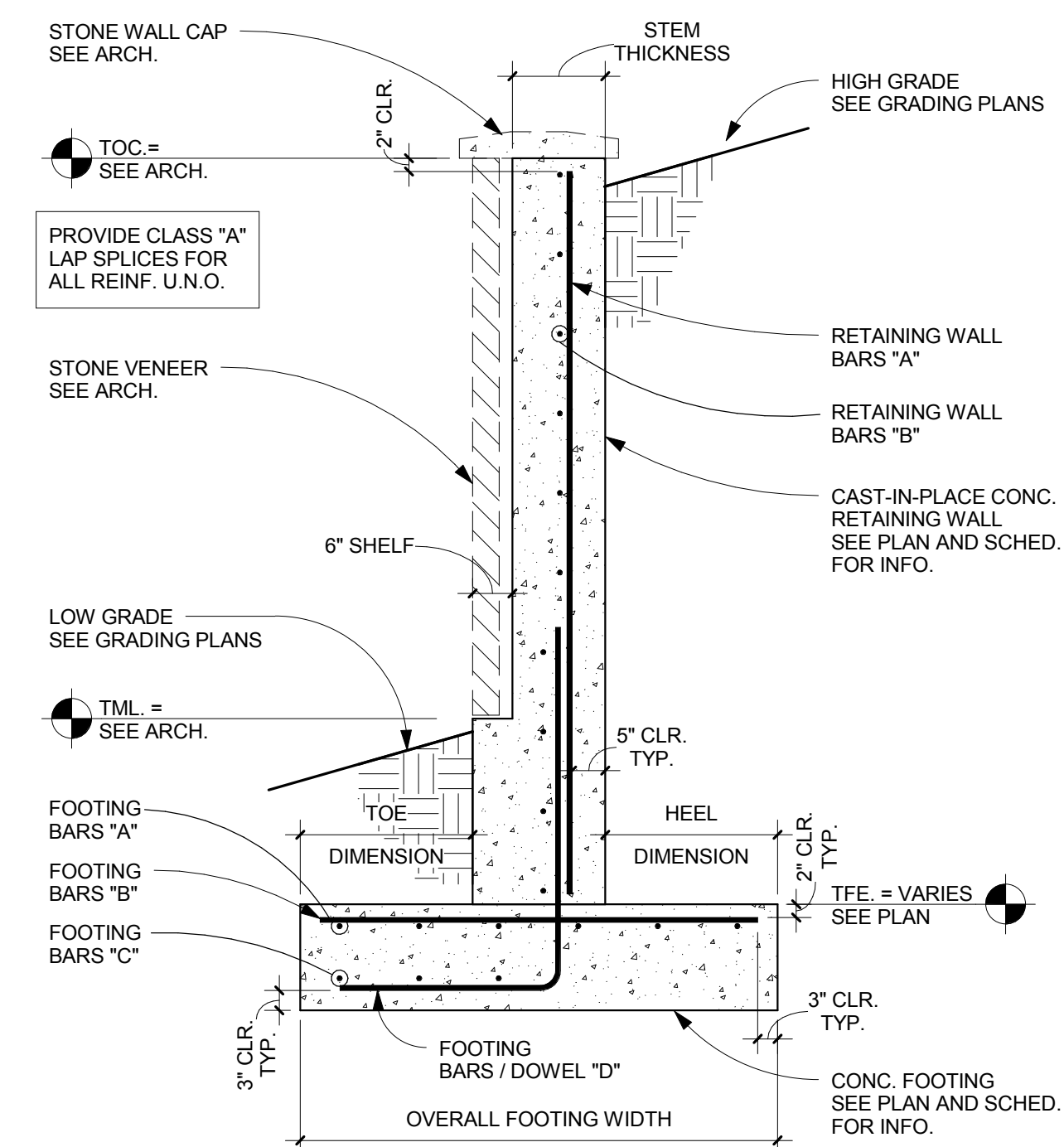


NATIONAL
CEMETERY
ADMINISTRATION

Drawing Title SECTIONS & DETAILS		Project Title CEMETERY EXPANSION			Date 10-09-2015	
					Project Number 906-CM-3012	
Approved: Director, Office of Construction Management		Building Number	Checked JL	Drawn JR	DRAWING NO. S3.01	
Approved: Director, Project Management Service		Location EAGLE POINT, OREGON			Dwg. 73 of 85	



1 SECTION
1/2" = 1'-0"



2 SECTION
1/2" = 1'-0"

10/7/2015 3:03:43 PM