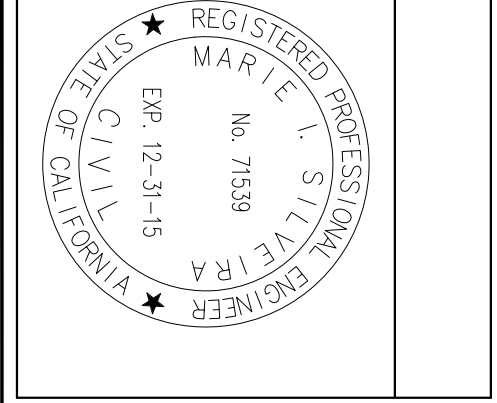


C:\Projects\FW90746_VA IDIQ SJVNC Crypts\zDrawings\000000_UDP_01-CD\14_ACCESS ROAD PROFILE.dwg 9-24-15 12:32:54 PM SilveiraM

Revisions:	
Number	Date

CONSULTANTS:	
SURVEYOR BRIAN CHURCH & FIRM 1000 S. GARDEN ST. SUITE 200 CLOVIS, CA 95302 (559) 326-1400 PHONE	GEOTECHNICAL ENGINEER STRENGTH, BEARING & BUILT STRUCTURES 1000 S. GARDEN ST. SUITE 200 CLOVIS, CA 95302 (559) 326-1400 PHONE
COST ESTIMATING LTC 1000 S. GARDEN ST. SUITE 102 SACRAMENTO, CA 95827 (916) 925-4000 PHONE	

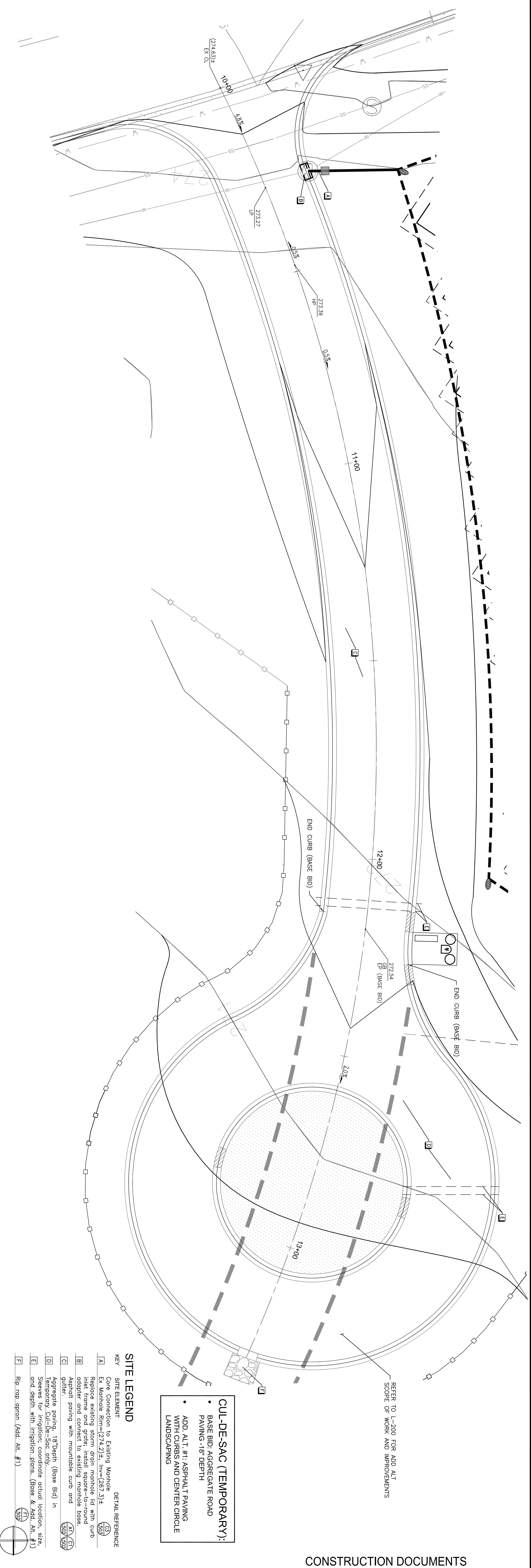
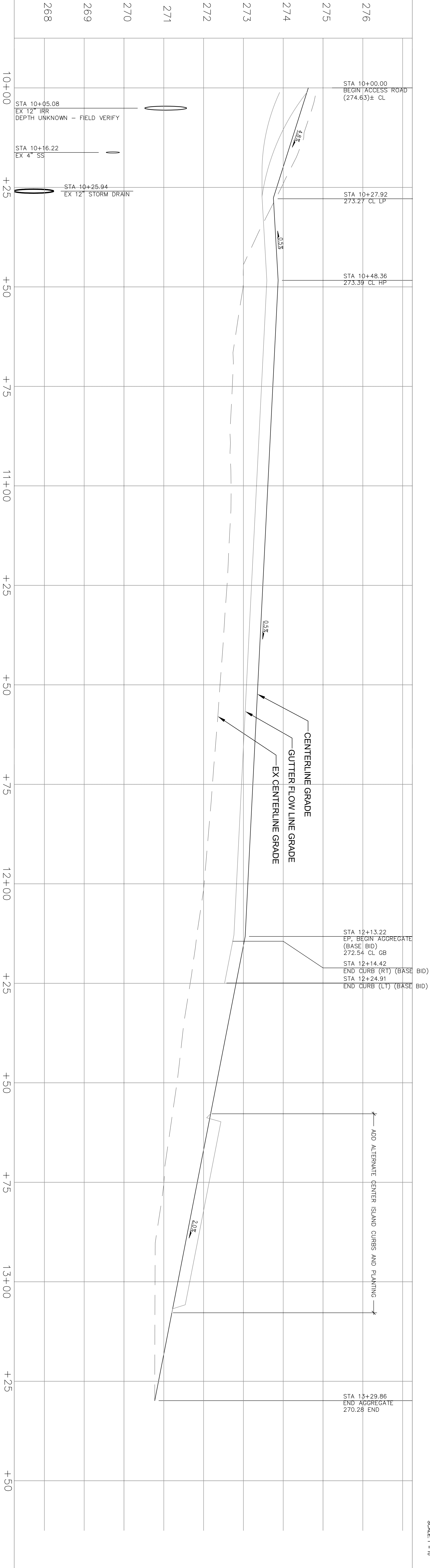


ARCHITECT/ENGINEERS:	
JACOBS Jacobs Engineering Group Inc. Consultants in Architecture, Engineering, Planning, and the Environment 500 Capitol Office Suite 200 Sacramento, California 95811 (916) 929-3323 Fax (916) 929-1772	

Drawing Title	
ACCESS ROAD PLAN & PROFILE	
Approved Project Director	

Project Title	
SAN JOAQUIN VALLEY NATIONAL CEMETERY PRE-PLACED CURBS IN SECTION 21	
Location	SAN JOAQUIN VALLEY NATIONAL CEMETERY SANTA NELLA, CALIFORNIA
Date	09/28/2015
Checked	MIS
Drawn	RAW
Dwg. No.	14 of 25
Project Number	9130M012
Building Number	
Drawing Number	L-400

NATIONAL CEMETERY ADMINISTRATION DESIGN AND CONSTRUCTION SERVICE	Department of Veterans Affairs
---	-----------------------------------



SITE LEGEND	
KEY	DETAIL REFERENCE
[A] Core Connection to Existing Manhole	(25)
[B] Ex Manhole Rim=(274.2)±, Inv=(267.3)±	(26)
[C] Replace existing storm drain manhole lid with curb	(27)
[D] Adopter and connect to existing manhole base.	(28)
[E] Asphalt paving with mountable curb and gutter.	(29)
[F] Aggregate paving, 18"Depth (Base Bid) in	(30)
[G] Secondary curb-in-place, comp. Sloped to match adjacent aggregate actual location, size and depth with irrigation plans. (Base & Add. Alt. #1)	(31)
[H] Rip rap apron (Add. Alt. #1)	(32)

CUL-DE-SAC (TEMPORARY):

- BASE BID: AGGREGATE ROAD PAVING - 18" DEPTH
- ADD ALT #1: ASPHALT PAVING WITH CURBS AND CENTER CIRCLE LANDSCAPING