

KEY NOTES:

1. GATE VALVES 3" AND LARGER FLANGED ENDS WITH 2" INCH OPERATING NUT
2. ALLOW 3" BETWEEN VALVE BOX AND 705 PAVE
3. VALVE BOX WITH BOLT TO DOWN.
4. TOP OF MULCH.
5. 6" DIAMETER SCH 40 PVC PIPE WHEELS.
6. PEA GRAVEL
7. 6" LAYER OF CLEAN PEA GRAVEL
8. COMMON BRICK; 4" MINIMUM
9. SCH 80 PVC FLANGES TYP. (2)
10. CONCRETE STABILIZER WITH #4 REBAR REINFORCEMENT FOR VALVES 4" OR LARGER ONLY
11. SQUARE OPERATING NUT

B1 GATE VALVE

NOT TO SCALE

DISTANCE CHART

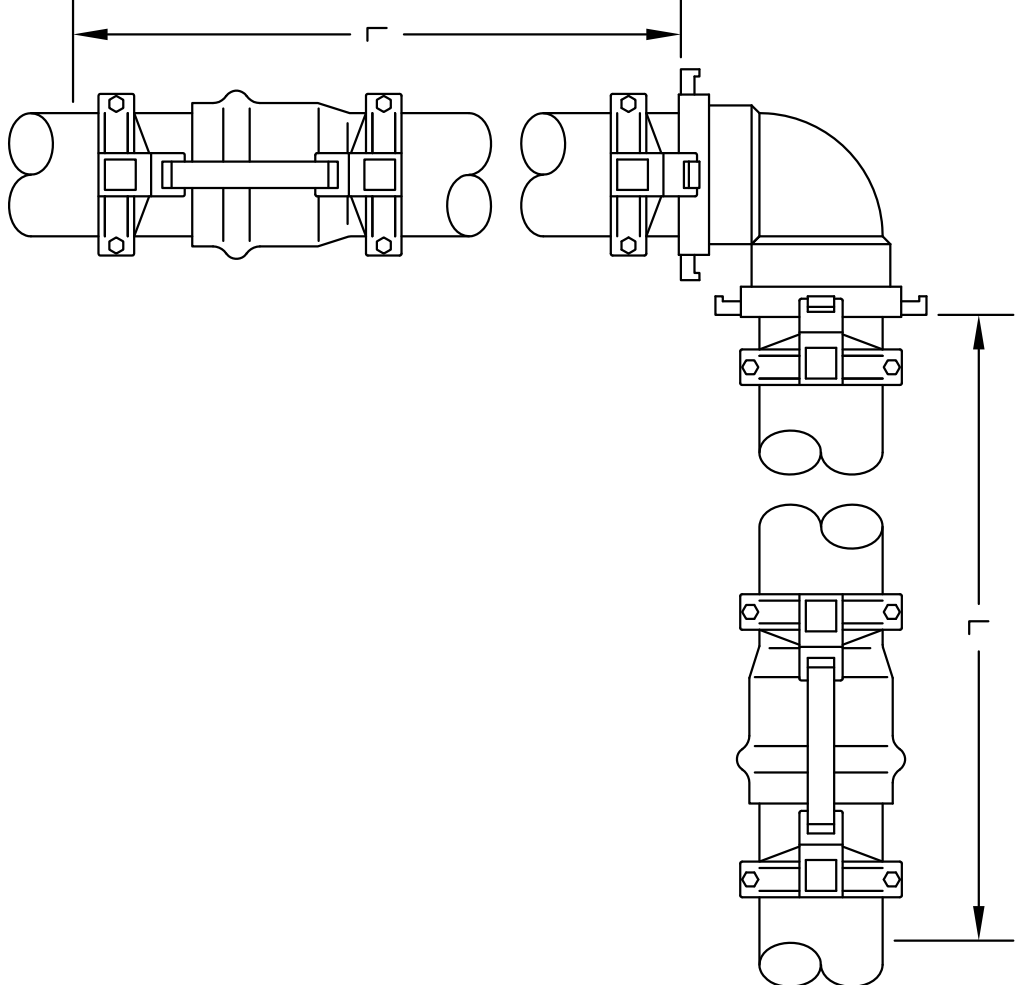
REFER TO THE FOLLOWING TABLE THAT LISTS THE LENGTH (IN FEET) FOR EACH SIZE TYPE. THE DISTANCE BETWEEN THE VALVE AND THE RESTRAINT SHALL BE INSTALLED PER MANUFACTURERS RECOMMENDATIONS & SPECIFICATIONS. AS AN EXAMPLE, IF YOU ARE INSTALLING A 3" MAINLINE WITH A DIRECTIONAL CHANGE OF 90°, REFER TO CHART UNDER PIPE SIZE TO 3" AND UNDER BEVOS 90 YOU WILL SEE THE DISTANCE WITHIN 1" OF THE 90° MAINLINE DIRECTIONAL CHANGE

PIPE SIZE	BEVOS			REDUCERS			DEAD END
	1 1/2"	2 1/2"	4 1/2"	1 STEP	2 STEP	3 STEP	
2 1/2"	1'	1'	2'	6"	—	—	19'
3"	1'	2'	6"	11"	—	—	30'
4"	2'	3'	6"	11"	10'	15'	45'
6"	2'	4'	9'	20'	14'	20'	75'
8"	4'	6'	15'	38'	24'	34'	110'
10"	5'	8'	21'	45'	38'	45'	162'
12"	5'	10'	21'	45'	38'	45'	162'

INSTALLATION CHART

REFER TO THE FOLLOWING TABLE WHICH LISTS THE NUMBER OF BOLTS, SIZE AND TORQUE FOR EACH SIZE IN EACH BEVOS TO THE 3" PIPE WHICH IS BEING RESTRAINED. 3" BEVOS YOU MUST HAVE NEW WITH A TORQUE WRENCH TO 20 FT-LBS

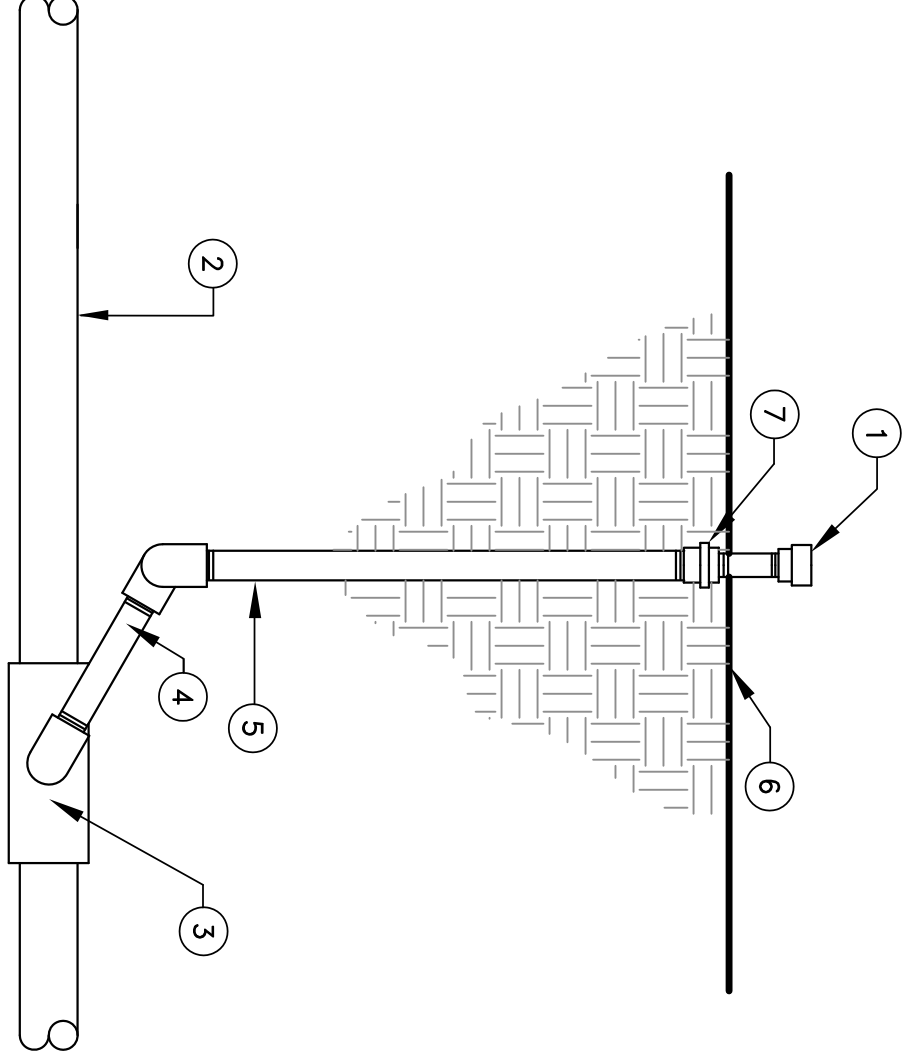
PIPE SIZE	NO. BOLTS	BOLT SIZE	TORQUE FT-LBS
2 1/2"	2	3/8" x 2 1/2"	20
3"	2	3/8" x 2 1/2"	20
4"	2	1/2" x 3 1/2"	50
6"	2	1/2" x 3 1/2"	50
8"	4	1/2" x 4"	50
10"	4	3/4" x 5 1/2"	100
12"	4	3/4" x 5 1/2"	100



NOTE: MECHANICAL JOINT RESTRAINTS ARE TO BE USED IN ALL JOINTS. THURST BLOCKS AS REQUIRED BY THE SPECIFICATIONS.

D1 JOINT RESTRAINT CHART

NOT TO SCALE

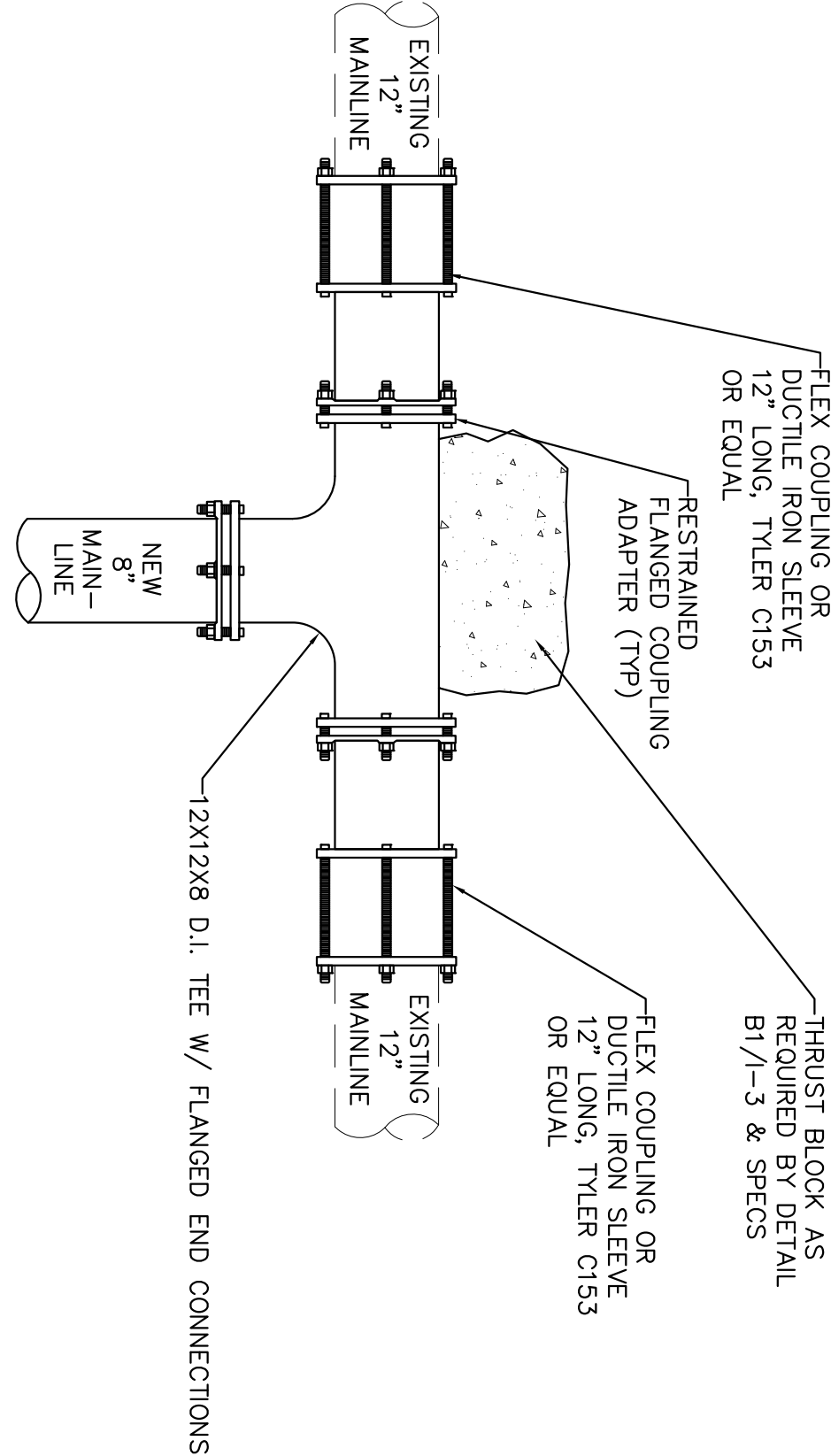


KEY NOTES:

1. BUBBLER HEAD, INSTALL 4" ABOVE FINISH GRADE WITHIN TREE OR SHRUB ROOT BALL
2. LATERAL LINE
3. FACTORY-FABRICATED 3 PLANE PVC SWING JOINT, 150 PSI MIN. RATING
5. SCHEDULE 80 PVC NIPPLE
6. FINISH GRADE
7. PVC CHECK VALVE

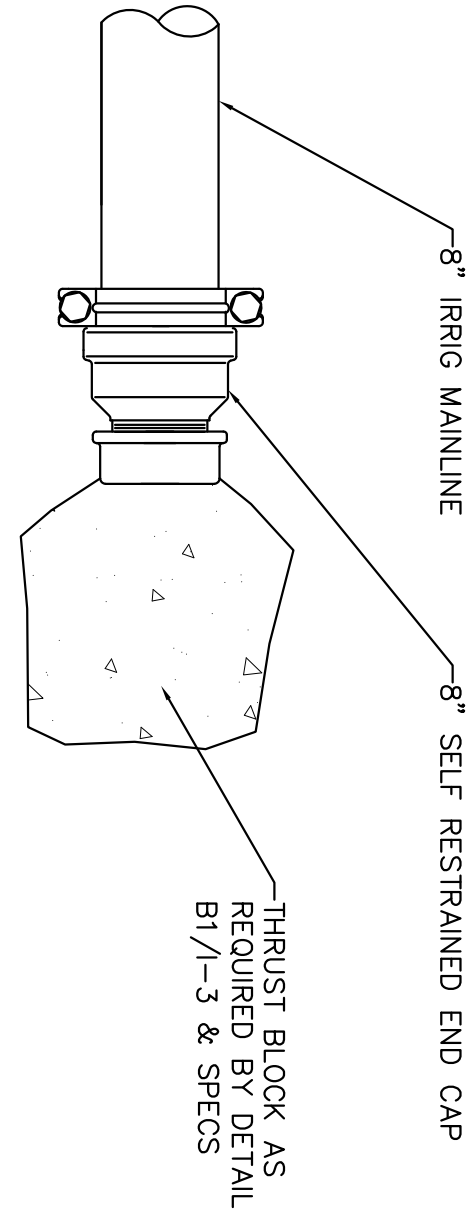
F1 SHRUB BUBBLER

NOT TO SCALE



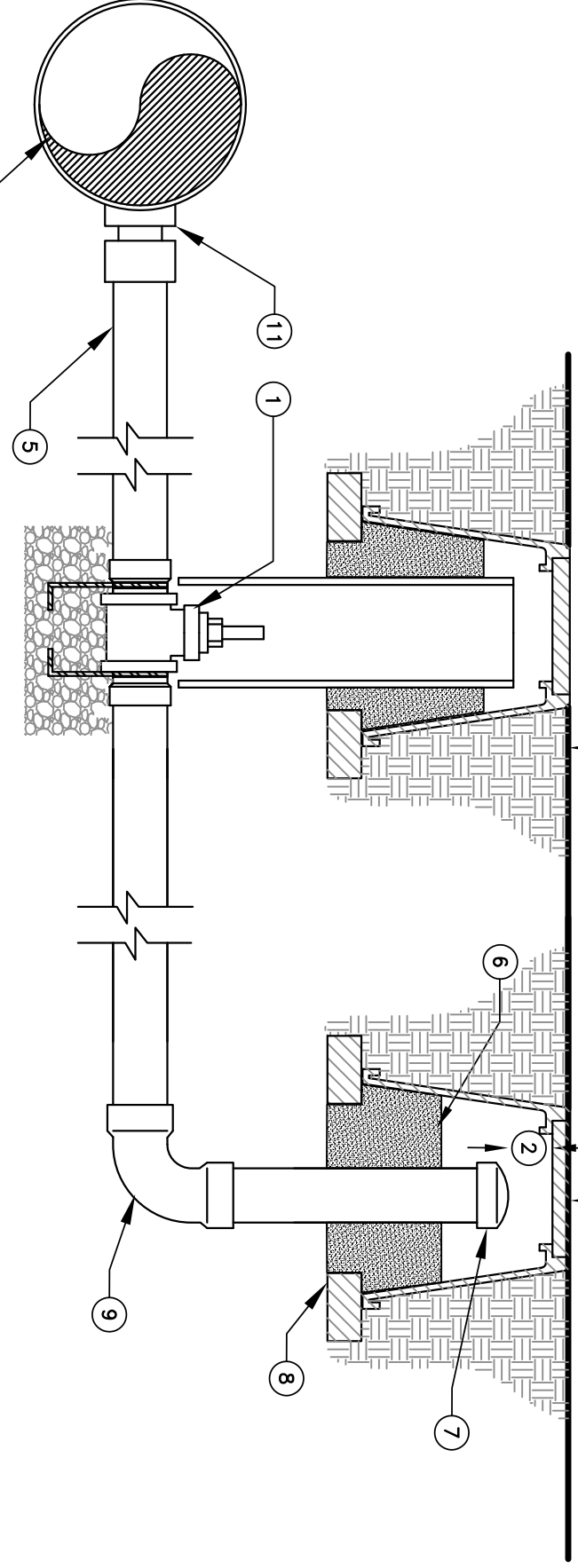
B3 POINT OF CONNECTION/CUT-IN TEE

NOT TO SCALE



B5 MAINLINE END CAP

NOT TO SCALE

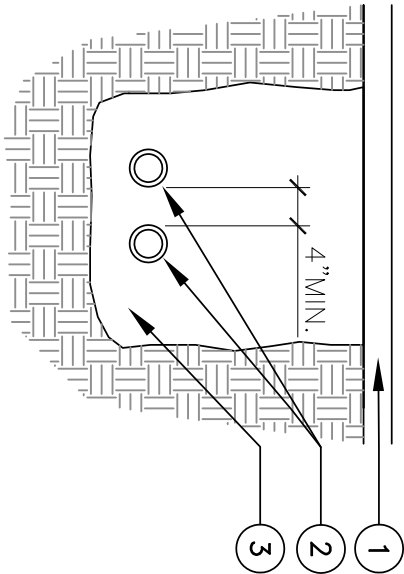


KEY NOTES:

1. 2" GATE VALVE — PER DETAIL B1
2. ALLOW 3" BETWEEN VALVE BOX AND 705 PAVE
3. 10" DIAMETER PLASTIC ROUND VALVE BOX WITH BOLT TO DOWN.
4. TOP OF MULCH.
5. 2" DIAMETER SCH. 40 PVC PIPE
6. PEA GRAVEL
7. CAP — UNGLUED
8. COMMON BRICK; 4" MINIMUM
9. SCH 80 ELBOW
10. MAINLINE
11. 2" CURB STOP OR SADDLE TAP

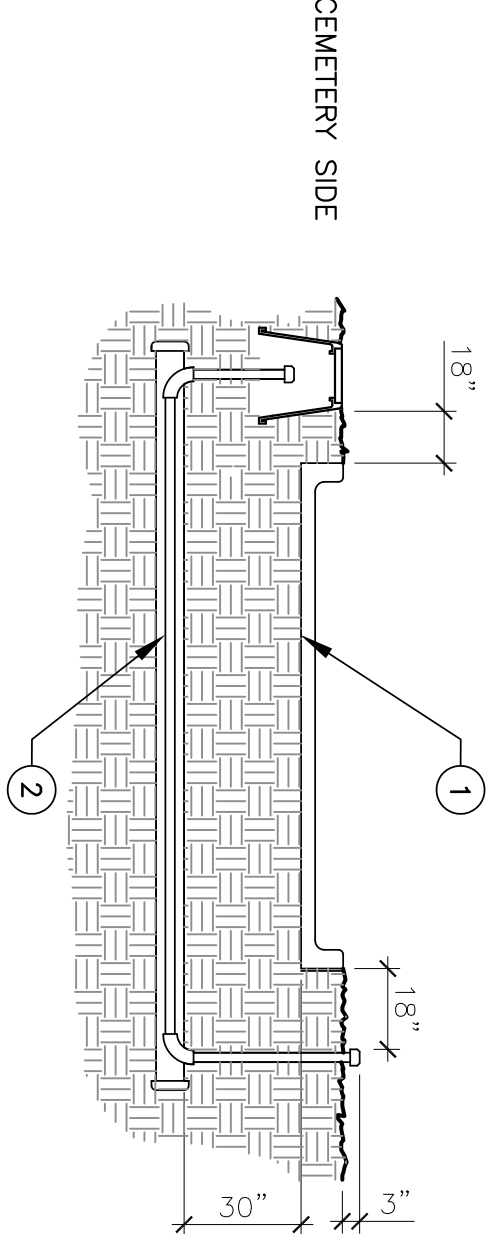
D4 BLOW OFF VALVE ASSEMBLY

NOT TO SCALE



KEY NOTES:

1. PAVING
2. (2) 4" SLEEVES W/CAP, UNGLUED
3. TRENCH



- NOTE:
1. EXTEND ONE SLEEVE ON CEMETERY SIDE
 2. VERTICALLY INTO 10" VALVE BOX
 3. VERTICALLY TO 5" ABOVE GRADE
 4. ALL JOINTS SHALL BE SOLVENT WELDED
 5. MECHANICALLY TAMP BACKFILL TO 95%

F3 SLEEVES

NOT TO SCALE

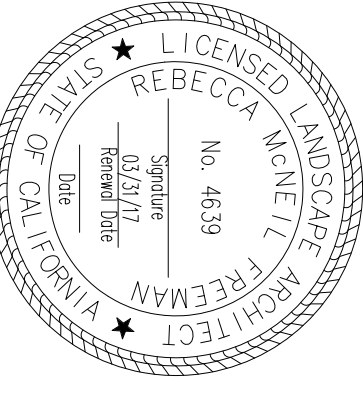
Revisions:	Date

CONSULTANTS:

SURVEYOR
BRIAN CHEN & FIRM
SURVEYING & MAPPING
1000 W. 14TH AVE. SUITE 200
CONCORD, CA 94502
(559) 326-1400 PHONE

GEOTECHNICAL ENGINEER
STRENGTH, BEARING & SETTLEMENT ANALYSIS
1000 W. 14TH AVE. SUITE 102
CONCORD, CA 94502
(925) 688-1001 PHONE

COST ESTIMATING
SHERI WESS, CMAA, LEED AP
1000 W. 14TH AVE. SUITE 102
CONCORD, CA 94502
(916) 925-4000 PHONE



ARCHITECT/ENGINEERS:

JACOBS
Jacobs Engineering Group Inc.
Consultants in Architecture, Engineering,
Planning, and the Environment
500 Corporate Office Suite 200
1400 7th Street
Sacramento, California 95811
(916) 929-3323 Fax (916) 929-1772

Drawing Title		Project Title		Project Number		Building Number		Drawing Number		National Cemetery Administration Design and Construction Service	
IRRIGATION DETAILS		SAN JOAQUIN VALLEY NATIONAL CEMETERY PRE-PLACED CRYPTS IN SECTION 21		9130M012		1-4		1-4		Department of Veterans Affairs	
Approved Project Director		Location		Date		Checked		Drawn		Dwg. 25 of 25	
		SAN JOAQUIN VALLEY NATIONAL CEMETERY SANTA NEILA, CALIFORNIA		09/28/2015		MS		RW			