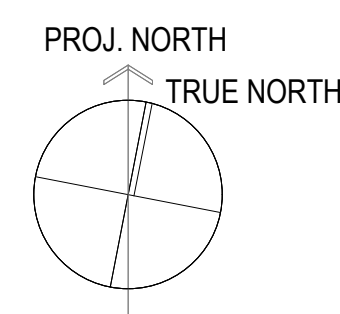


WATER SUPPLY TEST	
DATE OF TEST:	FEBRUARY 27, 2009
FLOW HYDT. LOCATION	HYDT # 7
RESIDUAL HYDT. LOCATION	HYDT #6
STATIC PRESSURE	85 PSI
RESIDUAL PRESSURE	75 PSI
FLOW	1,063 GPM
FLOW COEFFICIENT	0.85
PRELIMINARY TEST ONLY; CONTRACTOR TO CONDUCT NEW WATER TEST ONCE UNDERGROUND MAINS HAVE BEEN RE-ROUTED AND PRIOR TO SHOP DRAWING SUBMITTAL.	

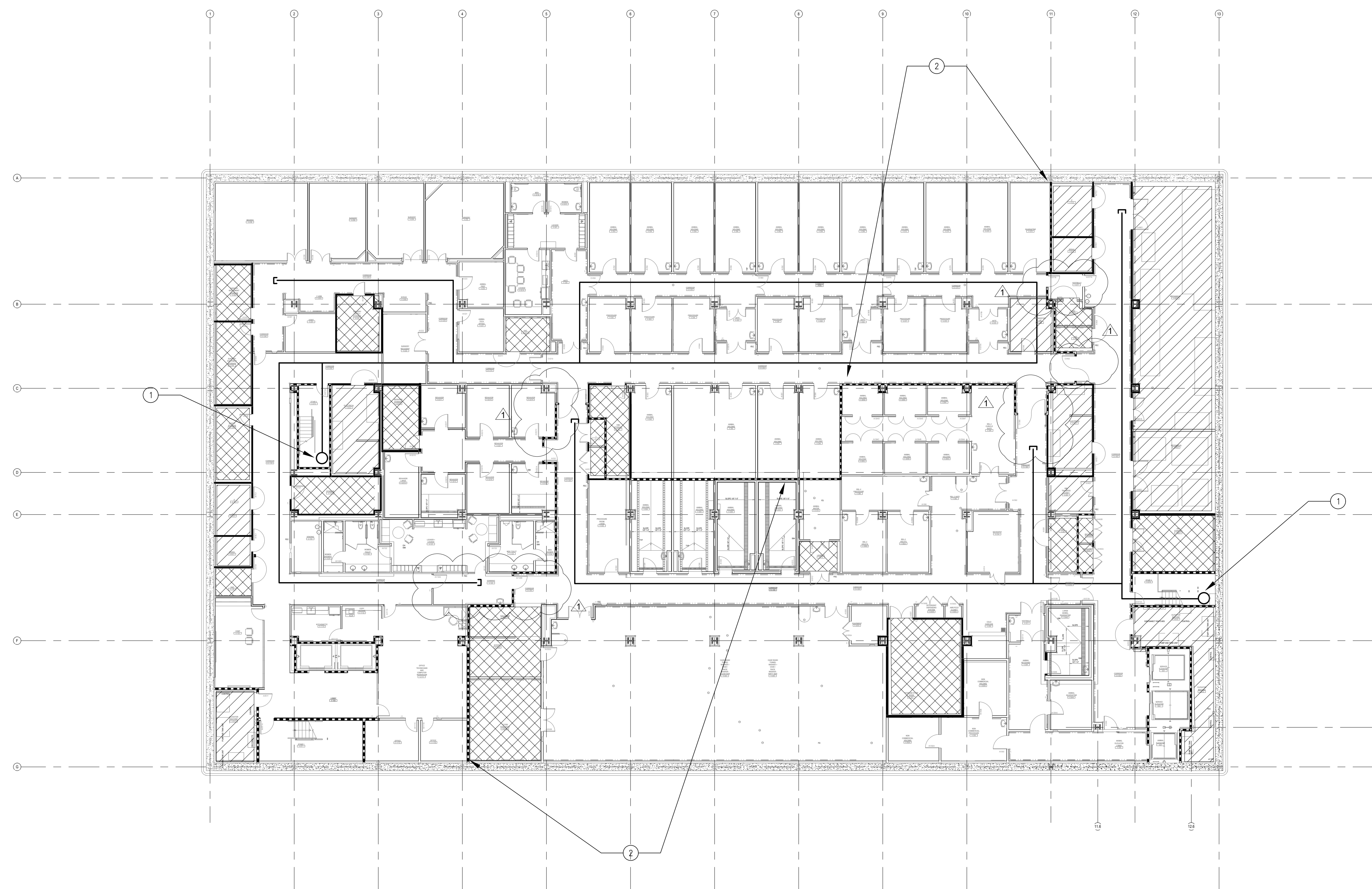
① AUTOMATIC SPRINKLER SYSTEM RISER WITH FLOOR CONTROL VALVE ASSEMBLY. RISER FED FROM LEVEL U.

② 2-HR HORIZONTAL EXIT



FULLY SPRINKLERED
CONSTRUCTION DOCUMENTS

Office of
Construction
and Facilities
Management



AUTOMATIC SPRINKLER DRAWING NOTES

1. AUTOMATIC SPRINKLER SYSTEM DESIGN, ENGINEERING AND INSTALLATION AS INDICATED ON THIS PLAN SHALL COMPLY WITH NFPA 13, 2007 EDITION, VA DESIGN STANDARDS, VA FIRE PROTECTION DESIGN MANUAL, AND OTHER APPLICABLE CODES AND STANDARDS AS REQUIRED BY THE AUTHORITY HAVING JURISDICTION (AHJ).
2. AUTOMATIC SPRINKLER DESIGN SHALL BE AS NOTED BY HATCHED AND NON-HATCHED AREAS AND SPECIFICATIONS.
3. CONTRACTOR IS RESPONSIBLE FOR REVIEWING ALL SPECIFICATIONS AND DRAWINGS ASSOCIATED WITH THIS PROJECT.
4. THE CONTRACT SHALL BEGIN AT AN UNDERGROUND CONNECTION APPROXIMATELY 5 FT. OUTSIDE THE BUILDING. SPRINKLER CONTRACTOR TO COORDINATE IN- WITH CIVIL CONTRACTOR.
5. ALL MAINS AND DEVICE CODES OF THIS PROJECT SHALL BE USED AND/OR FM APPROVED FOR USE IN AN AUTOMATIC SPRINKLER SYSTEM.
6. ALL PIPING PENETRATIONS THROUGH FIRE RATED ASSEMBLIES SHALL BE SEALED WITH AN APPROVED SEALANT, ACCORDING TO THE CODES OF THIS PROJECT.
7. ALL AUTOMATIC SPRINKLER PIPING INSTALLED UNDER THIS CONTRACT SHALL BE HYDROSTATICALLY TESTED IN ACCORDANCE WITH NFPA 13, 2007 EDITION AND OTHER APPLICABLE NFPA STANDARDS.
8. ALL ABOVE AND LOCAL CODES SHALL BE FOLLOWED.
9. ALL OUTSIDE AND UNDERGROUND WORK, DESIGN, INSTALLATION TESTING AND FLUSHING OF UNDERGROUND PIPING IS TO BE DONE BY OTHERS. UNDERGROUND PIPING SHALL BE FLUSHED IN ACCORDANCE WITH NFPA 13, 2007 EDITION.
10. FIRE DETECTION, NOTIFICATION, ALARM SYSTEM, AND CONNECTION TO ALARM SYSTEM TO BE DONE BY OTHERS.
11. ANY AND ALL PAINTING TO BE COORDINATED BY GENERAL CONTRACTOR.
12. ANY AND ALL ACCESS PLANS FOR VALVE AND DEVICE ACCESSIBILITY TO COORDINATED BY GENERAL CONTRACTOR.
13. INSTALLATION OF REQUIRED FIRE ENTRY BOXES (E.G. KNOX BOXES) TO BE COORDINATED BY GENERAL CONTRACTOR.
14. THE OWNER IS RESPONSIBLE FOR MAINTAINING 18" IN. CLEARANCE BETWEEN ANY OBSTRUCTION AND THE SPRINKLER HEAD DEFLECTORS.
15. THE OWNER IS RESPONSIBLE FOR PROVIDING ADEQUATE HEAT (MINIMUM 40°F) WHERE WET SPRINKLER PIPING IS PRESENT TO PREVENT FREEZING OF WATER PIPING.

GRAPHIC SCALE: 1/4" = 1'-0"

Firetech
FC  **consulting**

8967 W. RADCLIFFE DR.
LITTLETON, CO 80123
OFFICE: 720.981.3413

www.firetechconsulting.com
"VETERAN OWNED SMALL BUSINESS"

Seals and Signatures



SMITHGROUP
architecture engineering interiors planning
301 BATTERY STREET, 7TH FLOOR
SAN FRANCISCO, CA 94111
T 415.227.0100 F 415.908.0862
www.smithgroup.com

Associate Architect:

The Design Partnership LLP
Architects + Planners
1412 VAN NESS AVE., 2ND FLOOR
SAN FRANCISCO, CA 94109
T 415.777.3737 F 415.777.3476
www.dpsf.com

	Drawing Title
--	---------------

FIRE SPRINKLER PLANS
LEVEL V
RESEARCH AND VMU

Approved: Project Director

William Ullman

Project Title	CENTERS FOR AMBULATORY CARE, POLYTRAUMA AND BLIND REHABILITATION
---------------	---

	Location

☐ Checked

Drawn

	Project Number
--	----------------

Building Number

	Drawing Number

FX2.1.0

VA FORM 08-6231