



Department of  
Veterans Affairs

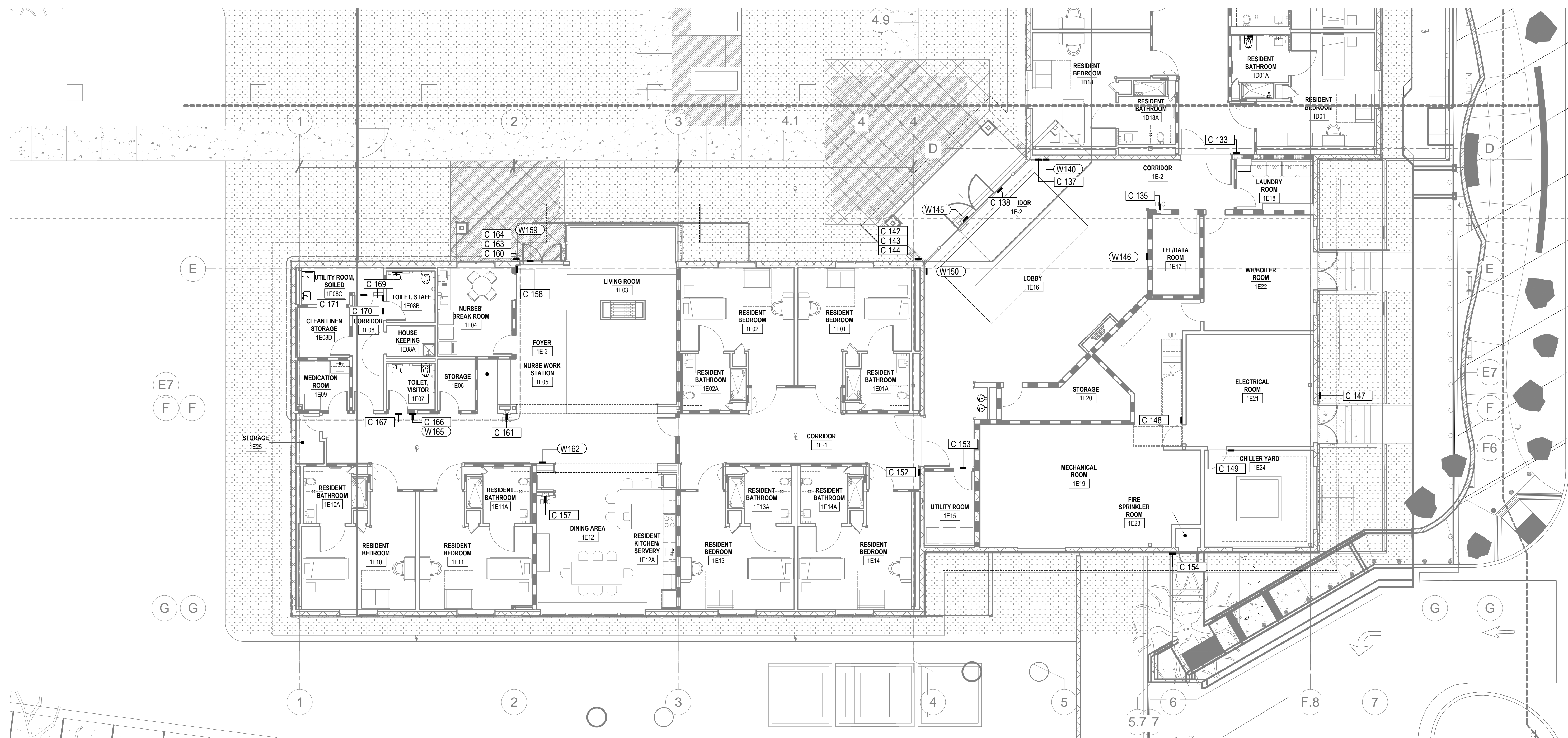
AG102



one eighth inch = one foot  
one quarter inch = one foot  
one half inch = one foot  
three quarters inch = one foot  
one inch = one foot  
one and one half inches = one foot  
two inches = one foot  
three inches = one foot

C:\Users\scott\Documents\100201\_sandpoint

03/20/15 2:38 PM



① WEST WING  
1/8" = 1'-0"



## SHEET NOTES

SIGNAGE WILL BE TAKEFORM TO MATCH VA  
FRESNO BUILDING 24 SIGNS.

## KEY NOTES

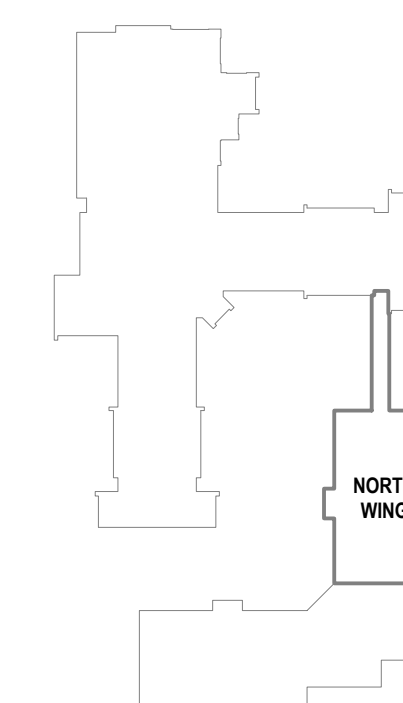
## FLOOR PLAN LEGEND

C ### CODE SIGN

W ### WAYFINDING SIGN

CODE REQUIRED AND WAYFINDING SIGN  
LOCATIONS ARE SHOWN ON SIGN LOCATION  
PLANS WITH MARKERS. SIGN LOCATION  
MARKERS ARE NOT DRAWN TO SCALE.  
FOR ROOM IDENTIFICATION SIGNS, PLEASE  
REFER TO THE ARCHITECTURAL ROOM  
NUMBER CENTERED IN EACH ROOM OR  
AREA ON SIGN LOCATION PLANS. THIS  
NUMBER IS CROSS REFERENCED TO THE  
SIGN SCHEDULE WHICH IS PART OF THE  
SPECIFICATIONS FOR THIS PROJECT,  
SECTION 10 14 00.

## KEY PLAN



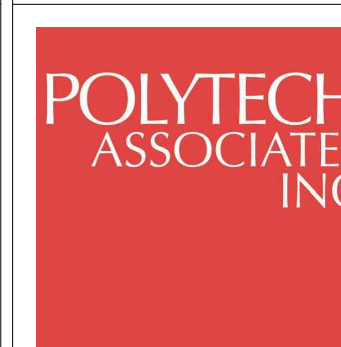
100% CONSTRUCTION DOCUMENTS  
NOVEMBER 19, 2015

## CONSULTANTS:



Kate Keating Associates, Inc.  
1045 Sansome Street, Suite 202  
San Francisco, CA 94111  
415.773.1000 Fax 773.1008  
city@kka-inc.com

## ARCHITECT



POLYTECH ASSOCIATES INC.  
235 Pine Street, 17th Floor  
San Francisco, CA 94104  
TEL (415) 397-3117  
FAX (415) 397-1517

Drawing Title  
FIRST FLOOR SIGN LOCATION PLAN  
WEST WING

Approved: Project Director

Project Title  
EXPAND COMMUNITY LIVING CENTER

Location  
2615 EAST CLINTON AVE  
FRESNO, CA 93703

Date  
07/31/2015

Checked  
RC

Drawn  
JD

Project Number  
570-218

Building Number  
31

Drawing Number

AG103

Office of  
Construction  
and Facilities  
Management

