

0 1 2 3 4 5 6 7 8 9 10 11 12 13 14 15 16 17 18 19 20 21 22 23 24 25 26 27 28 29 30 31 32 33 34 35 36 37 38 39 40 41 42 43 44 45 46 47 48 49 50 51 52 53 54 55 56 57 58 59 60 61 62 63 64 65 66 67 68 69 70 71 72 73 74 75 76 77 78 79 80 81 82 83 84 85 86 87 88 89 90 91 92 93 94 95 96 97 98 99 100 101 102 103 104 105 106 107 108 109 110 111 112 113 114 115 116 117 118 119 120 121 122 123 124 125 126 127 128 129 130 131 132 133 134 135 136 137 138 139 140 141 142 143 144 145 146 147 148 149 150 151 152 153 154 155 156 157 158 159 160 161 162 163 164 165 166 167 168 169 170 171 172 173 174 175 176 177 178 179 180 181 182 183 184 185 186 187 188 189 190 191 192 193 194 195 196 197 198 199 200 201 202 203 204 205 206 207 208 209 210 211 212 213 214 215 216 217 218 219 220 221 222 223 224 225 226 227 228 229 230 231 232 233 234 235 236 237 238 239 240 241 242 243 244 245 246 247 248 249 250 251 252 253 254 255 256 257 258 259 260 261 262 263 264 265 266 267 268 269 270 271 272 273 274 275 276 277 278 279 280 281 282 283 284 285 286 287 288 289 290 291 292 293 294 295 296 297 298 299 300 301 302 303 304 305 306 307 308 309 310 311 312 313 314 315 316 317 318 319 320 321 322 323 324 325 326 327 328 329 330 331 332 333 334 335 336 337 338 339 340 341 342 343 344 345 346 347 348 349 350 351 352 353 354 355 356 357 358 359 360 361 362 363 364 365 366 367 368 369 370 371 372 373 374 375 376 377 378 379 380 381 382 383 384 385 386 387 388 389 390 391 392 393 394 395 396 397 398 399 400 401 402 403 404 405 406 407 408 409 410 411 412 413 414 415 416 417 418 419 420 421 422 423 424 425 426 427 428 429 430 431 432 433 434 435 436 437 438 439 440 441 442 443 444 445 446 447 448 449 450 451 452 453 454 455 456 457 458 459 460 461 462 463 464 465 466 467 468 469 470 471 472 473 474 475 476 477 478 479 480 481 482 483 484 485 486 487 488 489 490 491 492 493 494 495 496 497 498 499 500 501 502 503 504 505 506 507 508 509 510 511 512 513 514 515 516 517 518 519 520 521 522 523 524 525 526 527 528 529 530 531 532 533 534 535 536 537 538 539 540 541 542 543 544 545 546 547 548 549 550 551 552 553 554 555 556 557 558 559 560 561 562 563 564 565 566 567 568 569 570 571 572 573 574 575 576 577 578 579 580 581 582 583 584 585 586 587 588 589 590 591 592 593 594 595 596 597 598 599 600 601 602 603 604 605 606 607 608 609 610 611 612 613 614 615 616 617 618 619 620 621 622 623 624 625 626 627 628 629 630 631 632 633 634 635 636 637 638 639 640 641 642 643 644 645 646 647 648 649 650 651 652 653 654 655 656 657 658 659 660 661 662 663 664 665 666 667 668 669 670 671 672 673 674 675 676 677 678 679 680 681 682 683 684 685 686 687 688 689 690 691 692 693 694 695 696 697 698 699 700 701 702 703 704 705 706 707 708 709 710 711 712 713 714 715 716 717 718 719 720 721 722 723 724 725 726 727 728 729 730 731 732 733 734 735 736 737 738 739 740 741 742 743 744 745 746 747 748 749 750 751 752 753 754 755 756 757 758 759 760 761 762 763 764 765 766 767 768 769 770 771 772 773 774 775 776 777 778 779 780 781 782 783 784 785 786 787 788 789 790 791 792 793 794 795 796 797 798 799 800 801 802 803 804 805 806 807 808 809 810 811 812 813 814 815 816 817 818 819 820 821 822 823 824 825 826 827 828 829 830 831 832 833 834 835 836 837 838 839 840 841 842 843 844 845 846 847 848 849 850 851 852 853 854 855 856 857 858 859 860 861 862 863 864 865 866 867 868 869 870 871 872 873 874 875 876 877 878 879 880 881 882 883 884 885 886 887 888 889 890 891 892 893 894 895 896 897 898 899 900 901 902 903 904 905 906 907 908 909 910 911 912 913 914 915 916 917 918 919 920 921 922 923 924 925 926 927 928 929 930 931 932 933 934 935 936 937 938 939 940 941 942 943 944 945 946 947 948 949 950 951 952 953 954 955 956 957 958 959 960 961 962 963 964 965 966 967 968 969 970 971 972 973 974 975 976 977 978 979 980 981 982 983 984 985 986 987 988 989 990 991 992 993 994 995 996 997 998 999 1000

POWER LEGEND (Not all symbols listed below are used on these drawings)			
SYMBOL	DESCRIPTION	SYMBOL	DESCRIPTION
	SINGLE RECEPTACLE		PLUG MOLD (MULTI-OUTLET ASSEMBLY)
	DUPLEX RECEPTACLE		WIREMOLD (SURFACE RACEWAY)
	DOUBLE DUPLEX RECEPTACLE		CONDUIT CONCEALED
	DUPLEX RECEPTACLE, HALF SWITCHED		CONDUIT EXPOSED
	DUPLEX RECEPTACLE, CEILING MOUNTED		CONDUIT UNDERGROUND OR CONCEALED IN FLOOR AS ALLOWED PER SPECIFICATIONS
	DUPLEX RECEPTACLE, FLOOR MOUNTED		CONDUIT TURNING DOWN
	DOUBLE DUPLEX RECEPTACLE, FLOOR MOUNTED		CONDUIT TURNING UP
	SPECIAL RECEPTACLE		CONDUIT CAPPED
	SPECIAL RECEPTACLE, FLOOR MOUNTED		BRANCH CIRCUIT HOME RUN, NUMBER OF ARROWS INDICATES NUMBER OF CIRCUITS, SUBSCRIPT INDICATES PANEL & CIRCUITS
	JUNCTION BOX, WALL OR CEILING MOUNTED		GROUND BAR
	JUNCTION BOX, FLOOR MOUNTED		MAIN SWITCHBOARD/DISTRIBUTION CENTER
	MOTOR		TRANSFORMER
	DISCONNECT SWITCH (NON-FUSED)		CURRENT TRANSFORMER
	DISCONNECT SWITCH (FUSED)		THERMOSTAT
	VARIABLE SPEED DRIVE WITH DISCONNECT		GENERATOR ANNUNCIATOR PANEL
	UTILITY METER		SHADING INDICATES EMERGENCY SYSTEM, TEXT INDICATES PANEL AND CIRCUIT DESIGNATION
	ELECTRICAL PANELBOARD, CONTROL PANEL, OR OTHER CABINET AS NOTED		

LIGHTING LEGEND (Not all symbols listed below are used on these drawings)			
SYMBOL	DESCRIPTION	SYMBOL	DESCRIPTION
	SHADING INDICATES EM SYSTEM, LOWER CASE SUBSCRIPT INDICATES SWITCHING, UPPER CASE SUBSCRIPT INDICATES LUMINAIRE TYPE (TYP)		DECORATIVE ADJUSTABLE ACCENT DOWNLIGHT
	SURFACE OR PENDANT MOUNTED LUMINAIRE		SQUARE DOWNLIGHT
	LENSED TROFFER		SQUARE WALL WASH DOWNLIGHT
	DIRECT/INDIRECT TROFFER		SQUARE ADJUSTABLE ACCENT DOWNLIGHT
	PATENT OVERBED LIGHT		INGRADE (INTERIOR/EXTERIOR)
	DIRECT/INDIRECT DISTRIBUTION, SUSPENDED LINEAR PENDANT		INGRADE WALL WASH
	INDIRECT DISTRIBUTION, SUSPENDED LINEAR PENDANT		INGRADE ADJUSTABLE ACCENT
	DIRECT DISTRIBUTION, SUSPENDED LINEAR PENDANT		DECORATIVE PENDANT
	DIRECT/INDIRECT DISTRIBUTION, WALL MOUNT LINEAR		PENDANT
	INDIRECT DISTRIBUTION, WALL MOUNT LINEAR		RECESS MOUNTED WALL LUMINAIRE
	DIRECT DISTRIBUTION, WALL MOUNT LINEAR		WALL PACK OR EXTERIOR NON-DECORATIVE WALL STORAGE
	DECORATIVE LINEAR WALLMOUNT		DECORATIVE SCONCE
	STRIP LINEAR WALLMOUNT		DECORATIVE POLE
	SURFACE OR PENDANT MOUNTED STRIP OR INDUSTRIAL LUMINAIRE		POLE
	THEATRICAL PIPE OR TRACK LIGHTING		BOLLARD
	TRACK HEAD		PORCELAIN KEYLESS LAMPHOLDER, BRYANT #228 W/100W A19 I.F. LAMP, PC INDICATES PULLCHAIN
	SURFACE DOWNLIGHT		EMERGENCY LIGHTING UNIT
	DOWNLIGHT		EXTERIOR STAKE MOUNTED
	WALL WASH DOWNLIGHT		DOCK LIGHT
	ADJUSTABLE ACCENT DOWNLIGHT		DARKROOM SAFE LIGHT (TWO COMPARTMENT SHOWN)
	DECORATIVE DOWNLIGHT		UNDERCABINET LIGHT
	DECORATIVE WALL WASH DOWNLIGHT		EXIT LIGHT, ARROWS AS INDICATED, FACES INDICATED BY SHADING

CONTROLS LEGEND (Not all symbols listed below are used on these drawings)			
SYMBOL	DESCRIPTION	SYMBOL	DESCRIPTION
	S ₁ SINGLE POLE SWITCH (SUBSCRIPT DENOTES SWITCHING)		S _{VS} VARIABLE SPEED/SPEED CONTROLLER SWITCH
	S ₂ TWO POLE SWITCH		S _{EP} EXPLOSION PROOF SWITCH
	S ₃ THREE-WAY SWITCH		S _{TO} THERMAL OVERLOAD SWITCH
	S ₄ FOUR-WAY SWITCH		S _{MC} MOMENTARY CONTACT SWITCH
	S _K KEY OPERATED SWITCH		S _{CS} COMBINATION SWITCH AND DUPLEX RECEPTACLE
	S _M MANUAL SWITCH, HORSEPOWER RATE		PHOTOCELL
	S _D DIMMER SWITCH		PUSH BUTTON
	S _{PL} SWITCH WITH PILOT LIGHT (PILOT LIGHT IS 'ON' WHEN SWITCH IS 'ON')		TIME CLOCK
	S _{PL} SWITCH WITH PILOT LIGHT LOCATOR (CONTINUOUSLY LIT WHEN HANDLE)		OCCUPANCY SENSOR - WALL MOUNTED (R=INFRARED, U=ULTRASONIC, DT=DUAL TECHNOLOGY)
	S _{LV} LOW VOLTAGE SWITCH		OCCUPANCY SENSOR - CEILING MOUNTED (R=INFRARED, U=ULTRASONIC, DT=DUAL TECHNOLOGY)

REFERENCE SYMBOLS LEGEND (Not all symbols listed below are used on these drawings)			
SYMBOL	DESCRIPTION	SYMBOL	DESCRIPTION
	KEY NOTE REFERENCE		KITCHEN/OWNER/MEDICAL EQUIPMENT REFERENCE
	TYPICAL CIRCUIT NUMBER		EXISTING TO REMAIN
	TYPICAL LUMINAIRE TYPE		EXISTING TO BE REMOVED
	TYPICAL ROOM REFERENCE (TOP=RMA, BOTTOM=FLR)		EXISTING TO BE RELOCATED
	MECHANICAL EQUIPMENT REFERENCE		EXISTING TO REMAIN - REPLACE DEVICE
	LIGHTING CONTROL/ EQUIPMENT REFERENCE		

ABBREVIATIONS LEGEND (Not all symbols listed below are used on these drawings)			
SYMBOL	DESCRIPTION	SYMBOL	DESCRIPTION
A	AMPERES	MCP	MOTOR CIRCUIT PROTECTOR
AC	ABOVE COUNTER, MOUNT HORIZONTALLY TO CENTERLINE OF DEVICE, HP ABOVE COUNTER OR BACK SPLASH	MEC	SEE MECHANICAL EQUIPMENT SCHEDULE
AFF	ABOVE FINISHED FLOOR	MIN	MINIMUM
AFG	ABOVE FINISHED GRADE	MLO	MAIN LUGS ONLY
ANN	ANNUNCIATOR	MTS	MANUAL TRANSFER SWITCH
ARF	ABOVE RAISED FLOOR	NC	NORMALLY CLOSED
ASSD	AIR SAMPLING SMOKE DETECTION	NIC	NOT IN CONTRACT
ATS	AUTOMATIC TRANSFER SWITCH	NL	NIGHT LIGHT
BFG	BELOW FINISHED GRADE	NO	NORMALLY OPEN
C	CONDUIT	NTS	NOT TO SCALE
CATV	CABLE TELEVISION	OC	ON CENTER
CB	CIRCUIT BREAKER	OFCI	OWNER FURNISHED, CONTRACTOR INSTALLED
CCTV	CLOSED CIRCUIT TELEVISION	OFI	OWNER FURNISHED, OWNER INSTALLED
(E)	EXISTING	OSWF	ON SITE WORK FORCE
EM	EMERGENCY	PB	PULL BOX
EMDC	EMERGENCY MAIN DISTRIBUTION CENTER	SB	STAND-BY
EP	EXPLOSION PROOF	SDC	SUB-DISTRIBUTION CENTER
EPO	EMERGENCY POWER OFF	TP	TAMPER PROOF
EVO	EMERGENCY VENTILATION ON/OFF	TVSS	TRANSIENT VOLTAGE SURGE SUPPRESSER
EW	ELECTRIC WATER COOLER	TYP	TYPICAL
FA	FIRE ALARM	UF	UNDER FLOOR
G	GROUND	UG	UNDER GROUND
GCP	GENERATOR CONTROL PANEL	UN	UNLESS OTHERWISE NOTED
GFI	GROUND FAULT INTERRUPTING	UPS	UNINTERRUPTIBLE POWER SUPPLY
HOA	HAND OFF AUTOMATIC	V	VOLTS
IG	ISOLATED GROUND	VFD	VARIABLE FREQUENCY DRIVE
MAX	MAXIMUM	W/	WITH
MCB	MAIN CIRCUIT BREAKER	W/O	WITHOUT
MCC	MOTOR CONTROL CENTER	WP	WEATHER PROOF
MDC	MAIN DISTRIBUTION CENTER	XMR	TRANSFORMER

FIRE ALARM SYSTEM LEGEND (Not all symbols listed below are used on these drawings)			
SYMBOL	DESCRIPTION	SYMBOL	DESCRIPTION
	FIRE ALARM CONTROL PANEL		MANUAL PULL STATION
	FIRE ALARM (NAC) POWER SUPPLY		ADDRESSABLE INPUT MODULE
	FIRE ALARM SYSTEM ANNUNCIATOR PANEL (GRAPHIC/LED)		ADDRESSABLE OUTPUT MODULE
	REMOTE ANNUNCIATOR PANEL		AUDIOVISUAL DEVICE (H=HORN, S=STROBE, C=CHIME, COMBINATION)
	GRAPHIC ZONE MAP		AUDIBLE DEVICE (H=HORN, S=SPEAKER, C=CHIME)
	RESCUE ASSISTANCE SYSTEM HEAD END UNIT		FIRE ALARM STROBE (J=JACK, H=HANDSET)
	FIRE FIGHTER SMOKE CONTROL PANEL		EMERGENCY TELEPHONE STATION
	REMOTE DISPLAY UNIT (AIR SAMPLING SYSTEM)		RESCUE ASSISTANCE TELEPHONE STATION
	SMOKE DETECTOR (P=PHOTOELECTRIC, S=SWITCH, B=BASE, BR=BEAM RECEIVER, BT=BEAM TRANSMITTER)		MAGNETIC DOOR HOLD
	THERMAL DETECTOR (F=FIXED TEMPERATURE, R=RESET, TEMPERATURE & RATE OF RISE, TEMP. RATING)		TAMPER SWITCH
	FLAME DETECTOR (UV=ULTRAVIOLET, IR=INFRARED)		FLOW DETECTOR SWITCH
	DUCT SMOKE DETECTOR (S=SUPPLY, R=RETURN)		PRESSURE SWITCH
	DUCT DETECTOR REMOTE INDICATOR ALARM AND TEST		FIRE/SMOKE DAMPER
	REMOTE INDICATOR LIGHT		CARBON MONOXIDE ALARM/DETECTOR

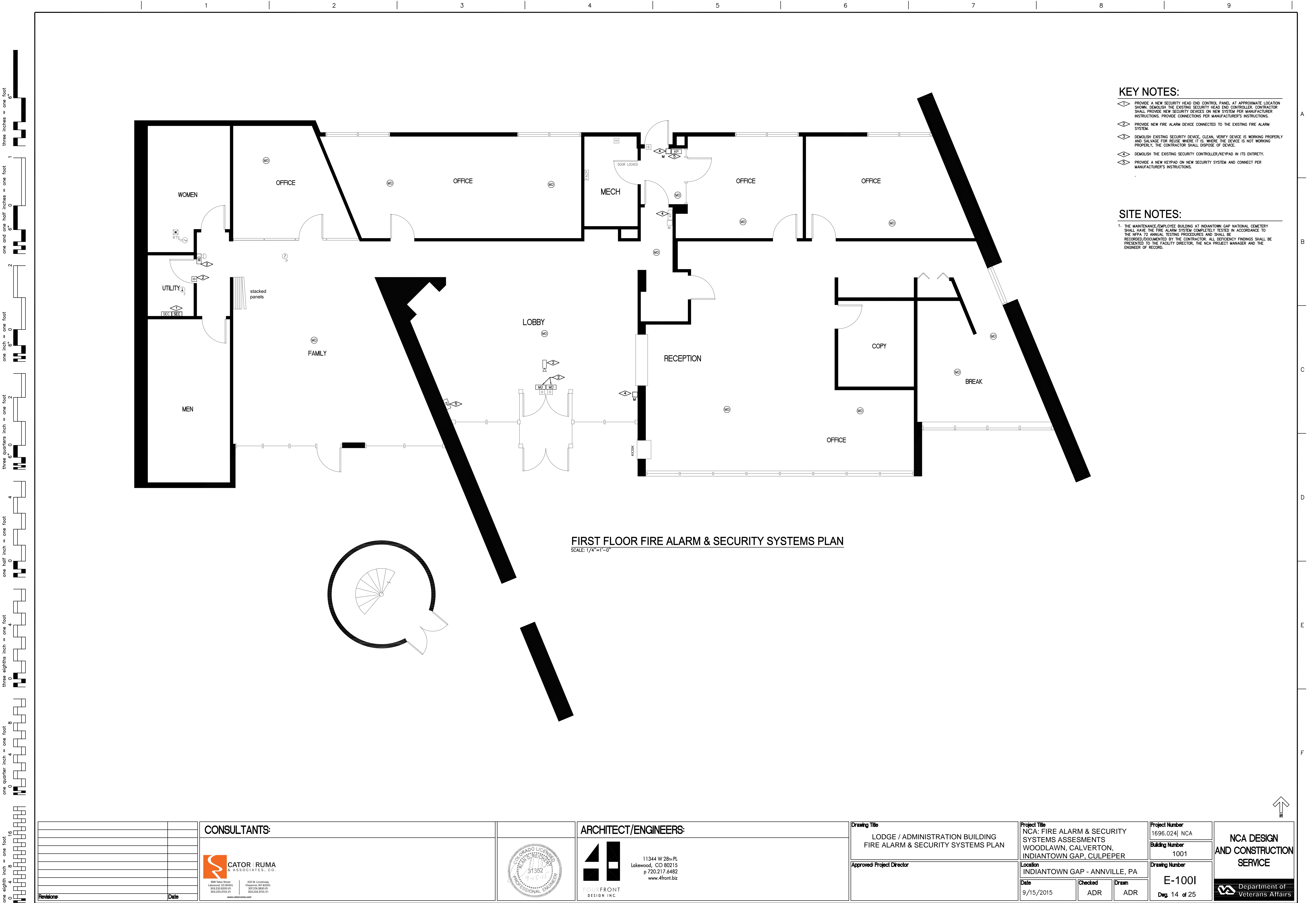
TECHNOLOGY LEGEND (Not all symbols listed below are used on these drawings)			
SYMBOL	DESCRIPTION	SYMBOL	DESCRIPTION
	TELEPHONE TERMINAL CABINET		CARD READER
	TELEPHONE TERMINAL BACKBOARD		DOOR CONTACT
	TELEPHONE OR DATA OUTLET		ELECTRIC DOOR LOCK
	TELEPHONE OR DATA OUTLET, FLOOR MOUNTED		ELECTRIC DOOR STRIKE
	TELEPHONE, WALL MOUNTED		REQUEST TO EXIT
	TELEPHONE/POWER POLE		ELECTRIC HINGE
	TELEVISION OUTLET		ELECTRIC POWER TRANSFER
	CLOCK OUTLET (D= DOUBLE SIDED)		POWER SUPPLY
	INTERCOM CALL - BUTTON		MAGNETIC DOOR LOCK
	PAGING SYSTEM SPEAKER		DURESS ALARM
	PAGING SYSTEM HORN (HIGH OUTPUT)		MOTION DETECTOR (WALL MOUNTED)
	BOX SPEAKER - SURFACE MOUNT		MOTION DETECTOR (CEILING MOUNTED)
	VOLUM CONTROL		GLASS BREAK DETECTOR (WALL MOUNTED)
	MICROPHONE STATION		GLASS BREAK DETECTOR (CEILING MOUNTED)
	INTERCOM STATION		KEYPAD
	SECURITY CONTROL PANEL		WIRELESS ACCESS POINT
	PROJECTOR		SECURITY CAMERA
			DONNER ANTENNA

GENERAL NOTES:

1. WORK INCLUDED IN THE CONTRACT IS DENOTED IN BOLD. EXISTING CONDITIONS TO REMAIN ARE DENOTED LIGHTLY.
2. PROTECT STRUCTURE AND OWNER EQUIPMENT FROM DAMAGE. IMMEDIATELY REPLACE OR REPAIR TO ORIGINAL CONDITION. DAMAGE CAUSED BY THE CONTRACTOR WHETHER EQUIPMENT APPEARS TO BE CURRENTLY IN USE OR NOT, UNLESS WRITTEN AUTHORIZATION FROM THE OWNER INDICATED OTHERWISE. PREPARE LISTING OF ALL EXISTING DAMAGED ITEMS AND SUBMIT TO OWNER PRIOR TO BEGINNING WORK.
3. INSTALL CONDUIT CONCEALED IN FINISHED AREAS UNLESS OTHERWISE NOTED. PAINT EXPOSED CONDUIT TO MATCH EXISTING FINISHES WITHIN THE SURROUNDING AREA.
4. DO NOT ROUTE CONDUIT WITHIN STRUCTURAL OR TOPPING SLABS OF FLOORS UNLESS SPECIFICALLY NOTED OTHERWISE AND WRITTEN APPROVAL IS OBTAINED FROM THE STRUCTURAL ENGINEER.
5. FIRE SEAL ALL FIRE RATED WALL AND FLOOR PENETRATIONS. REFER TO ARCHITECTURAL DRAWINGS FOR FIRE RATED WALLS.
6. COORDINATE EXACT REQUIREMENTS AND LOCATIONS OF MECHANICAL EQUIPMENT PRIOR TO ROUGH-IN AND ORDERING MATERIALS OR EQUIPMENT.
7. A DETAILED WRITTEN METHOD OF PROCEDURE IS REQUIRED WHEN A CONSTRUCTION ACTIVITY OR AN OUTAGE AFFECTS THE SAFETY OF OCCUPANTS. TELEPHONE/DATA/FIRE ALARM EQUIPMENT OR COMPONENTS OF ANY SYSTEM WHICH SUPPORTS THIS EQUIPMENT OR ESSENTIALLY AFFECTS THE BUILDING MANAGEMENT, OPERATIONS OR SECURITY.
8. EXISTING INFORMATION SHOWN ON THE DRAWINGS HAS BEEN TAKEN FROM OWNER FURNISHED DRAWINGS AND/OR LIMITED FIELD OBSERVATIONS. CATOR, RUMA & ASSOCIATES IS NOT RESPONSIBLE FOR THE ACCURACY OF ANY INFORMATION OR THE ADEQUACY, SAFETY AND CONFORMANCE TO CURRENT PREVAILING CODES OF ANY WORK SHOWN AS EXISTING ON THESE DRAWINGS.
9. FIELD LOCATE EXISTING UNDERGROUND PUBLIC AND OWNER UTILITIES OF ALL TRADES AND BUILDING GROUNDING/LIGHTNING PROTECTION SYSTEMS PRIOR TO ANY EXCAVATION. REPLACE OR REPAIR DAMAGED UTILITIES AND GROUNDING/LIGHTNING PROTECTION SYSTEMS TO ORIGINAL CONDITION.
10. PROVIDE SEPARATE INSULATED GROUNDING CONDUCTOR IN ALL FEEDER, HOMERUN AND BRANCH CIRCUITS.

FIRE ALARM PLAN NOTES:

1. LOCATE SMOKE DETECTORS PER NFPA 72 AND MANUFACTURERS REQUIREMENTS. THE LOCATIONS OF SMOKE DETECTORS ON THE DRAWINGS ARE DIAGRAMMATIC ONLY. DETECTORS SHALL NOT BE PLACED WITHIN 3'-0" OF ANY CEILING MOUNTED HVAC SUPPLY AIR DEVICE.
2. NEW FIRE ALARM DEVICES SHALL MATCH EXISTING, UNLESS NOTED OTHERWISE. PROVIDE RE-PROGRAMMING OF SYSTEM AS REQUIRED TO ACCOMMODATE NEW DEVICES. REVISE EXISTING ANNUNCIATOR(S) AND GRAPHIC ZONE MAP(S) TO REFLECT PROJECT FIRE ALARM MODIFICATIONS. SUBMIT TO ENGINEER AND BUILDING/FIRE DEPARTMENTS FOR REVIEW PRIOR TO INSTALLATION.
3. THE CONTRACTOR/VENDOR SHALL PROVIDE SPECIFIC PROPOSED CONDUIT/WIRING ROUTINGS SHOWN ON DRAWINGS FOR ALL EXTERIOR ROUTES AND ANY INTERIOR ROUTES VISIBLE TO THE PUBLIC OR STAFF. THE PROPOSED ROUTES SHALL BE REVIEWED BY THE NCA GEMETRY DIRECTOR, NCA PROJECT MANAGER CDR/PM, AND ENGINEER PRIOR TO THE SHOP DRAWINGS BEING FINALIZED. ONCE THE SHOP DRAWINGS AND FINAL ROUTES HAVE BEEN APPROVED FOR THE EXTERIOR ROUTINGS, AND PUBLICALLY VISIBLE ROUTES, THE CONTRACTOR SHALL THEN BE AUTHORIZED TO PROCEED TO INSTALL THOSE CONDUITS.



KEY NOTES:

- 1. PROVIDE A NEW SECURITY HEAD END CONTROL PANEL AT APPROXIMATE LOCATION SHOWN. DEMOLISH THE EXISTING SECURITY HEAD END CONTROLLER. CONTRACTOR SHALL PROVIDE NEW SECURITY DEVICES ON NEW SYSTEM PER MANUFACTURER INSTRUCTIONS. PROVIDE CONNECTIONS PER MANUFACTURER'S INSTRUCTIONS.
- 2. PROVIDE NEW FIRE ALARM DEVICE CONNECTED TO THE EXISTING FIRE ALARM SYSTEM.
- 3. DEMOLISH EXISTING SECURITY DEVICE. CLEAN, VERIFY DEVICE IS WORKING PROPERLY AND SALVAGE FOR REUSE WHERE IT IS. WHERE THE DEVICE IS NOT WORKING PROPERLY, THE CONTRACTOR SHALL DISPOSE OF DEVICE.
- 4. DEMOLISH THE EXISTING SECURITY CONTROLLER/KEYPAD IN ITS ENTIRETY.
- 5. PROVIDE A NEW KEYPAD ON NEW SECURITY SYSTEM AND CONNECT PER MANUFACTURER'S INSTRUCTIONS.

SITE NOTES:

- 1. THE MAINTENANCE/EMPLOYEE BUILDING AT INDIANTOWN GAP NATIONAL CEMETERY SHALL HAVE THE FIRE ALARM SYSTEM COMPLETELY TESTED IN ACCORDANCE TO THE NFPA 72 ANNUAL TESTING PROCEDURES AND SHALL BE RECORDED/DOCUMENTED BY THE CONTRACTOR. ALL DEFICIENCY FINDINGS SHALL BE PRESENTED TO THE FACILITY DIRECTOR, THE NCA PROJECT MANAGER AND THE ENGINEER OF RECORD.

FIRST FLOOR FIRE ALARM & SECURITY SYSTEMS PLAN

SCALE: 1/4"=1'-0"

--	--	--	--	--	--	--	--	--	--	--	--	--	--	--	--	--	--	--	--	--	--	--	--	--	--	--	--	--	--	--	--	--	--	--	--	--	--	--	--	--	--	--	--	--	--	--	--	--	--	--	--	--	--	--	--	--	--	--	--	--	--	--	--	--	--	--	--	--	--	--	--	--	--	--	--	--	--	--	--	--	--	--	--	--	--	--	--	--	--	--	--	--	--	--	--	--	--	--	--	--	--	--	--	--	--	--	--	--	--	--	--	--	--	--	--	--	--	--	--	--	--	--	--	--	--	--	--	--	--	--	--	--	--	--	--	--	--	--	--	--	--	--	--	--	--	--	--	--	--	--	--	--	--	--	--	--	--	--	--	--	--	--	--	--	--	--	--	--	--	--	--	--	--	--	--	--	--	--	--	--	--	--	--	--	--	--	--	--	--	--	--	--	--	--	--	--	--	--	--	--	--	--	--	--	--	--	--	--	--	--	--	--	--	--	--	--	--	--	--	--	--	--	--	--	--	--	--	--	--	--	--	--	--	--	--	--	--	--	--	--	--	--	--	--	--	--	--	--	--	--	--	--	--	--	--	--	--	--	--	--	--	--	--	--	--	--	--	--	--	--	--	--	--	--	--	--	--	--	--	--	--	--	--	--	--	--	--	--	--	--	--	--	--	--	--	--	--	--	--	--	--	--	--	--	--	--	--	--	--	--	--	--	--	--	--	--	--	--	--	--	--	--	--	--	--	--	--	--	--	--	--	--	--	--	--	--	--	--	--	--	--	--	--	--	--	--	--	--	--	--	--	--	--	--	--	--	--	--	--	--	--	--	--	--	--	--	--	--	--	--	--	--	--	--	--	--	--	--	--	--	--	--	--	--	--	--	--	--	--	--	--	--	--	--	--	--	--	--	--	--	--	--	--	--	--	--	--	--	--	--	--	--	--	--	--	--	--	--	--	--	--	--	--	--	--	--	--	--	--	--	--	--	--	--	--	--	--	--	--	--	--	--	--	--	--	--	--	--	--	--	--	--	--	--	--	--	--	--	--	--	--	--	--	--	--	--	--	--	--	--	--	--	--	--	--	--	--	--	--	--	--	--	--	--	--	--	--	--	--	--	--	--	--	--	--	--	--	--	--	--	--	--	--	--	--	--	--	--	--	--	--	--	--	--	--	--	--	--	--	--	--	--	--	--	--	--	--	--	--	--	--	--	--	--	--	--	--	--	--	--	--	--	--	--	--	--	--	--	--	--	--	--	--	--	--	--	--	--	--	--	--	--	--	--	--	--	--	--	--	--	--	--	--	--	--	--	--	--	--	--	--	--	--	--	--	--	--	--	--	--	--	--	--	--	--	--	--	--	--	--	--	--	--	--	--	--	--	--	--	--	--	--	--	--	--	--	--	--	--	--	--	--	--	--	--	--	--	--	--	--	--	--	--	--	--	--	--	--	--	--	--	--	--	--	--	--	--	--	--	--	--	--	--	--	--	--	--	--	--	--	--	--	--	--	--	--	--	--	--	--	--	--	--	--	--	--	--	--	--	--	--	--	--	--	--	--	--	--	--	--	--	--	--	--	--	--	--	--	--	--	--	--	--	--	--	--	--	--	--	--	--	--	--	--	--	--	--	--	--	--	--	--	--	--	--	--	--	--	--	--	--	--	--	--	--	--	--	--	--	--	--	--	--	--	--	--	--	--	--	--	--	--	--	--	--	--	--	--	--	--	--	--	--	--	--	--	--	--	--	--	--	--	--	--	--	--	--	--	--	--	--	--	--	--	--	--	--	--	--	--	--	--	--	--	--	--	--	--	--	--	--	--	--	--	--	--	--	--	--	--	--	--	--	--	--	--	--	--	--	--	--	--	--	--	--	--	--	--	--	--	--	--	--	--	--	--	--	--	--	--	--	--	--	--	--	--	--	--	--	--	--	--	--	--	--	--	--	--	--	--	--	--	--	--	--	--	--	--	--	--	--	--	--	--	--	--	--	--	--	--	--	--	--	--	--	--	--	--	--	--	--	--	--	--	--	--	--	--	--	--	--	--	--	--	--	--	--	--	--	--	--	--	--	--	--	--	--	--	--	--	--	--	--	--	--	--	--	--	--	--	--	--	--	--	--	--	--	--	--	--	--	--	--	--	--	--	--	--	--	--	--	--	--	--	--	--	--	--	--	--	--	--	--	--	--	--	--	--	--	--	--	--	--	--	--	--	--	--	--	--	--	--	--	--	--	--	--	--	--	--	--	--	--	--	--	--	--	--	--	--	--	--	--	--	--	--	--	--	--	--	--	--	--	--	--	--	--	--	--	--	--	--	--	--	--	--	--	--	--	--	--	--	--	--	--	--	--	--	--	--	--	--	--	--	--	--	--	--	--	--	--	--	--	--	--	--	--	--	--	--	--	--	--	--	--	--	--	--	--	--	--	--	--	--	--	--	--	--	--	--	--	--	--	--	--	--	--	--	--	--	--	--	--	--	--	--	--	--	--	--	--	--	--	--	--	--	--	--	--	--	--	--	--	--	--	--	--	--	--	--	--	--	--	--	--	--	--	--	--	--	--	--	--	--	--	--	--	--	--	--	--	--	--	--	--	--	--	--	--	--	--	--	--	--	--	--	--	--	--	--	--	--	--	--	--	--	--	--	--	--	--	--	--	--	--	--	--	--	--	--	--	--	--	--	--	--	--	--	--	--	--	--	--	--	--	--	--	--	--	--	--	--	--	--	--	--	--	--	--	--	--	--	--	--	--	--	--	--	--	--	--	--	--	--	--	--	--	--	--	--	--	--	--	--	--	--	--	--	--	--	--	--	--	--	--	--	--	--	--	--	--	--	--	--	--	--	--	--	--	--	--	--	--	--	--	--	--	--	--	--	--	--	--	--	--	--	--	--	--	--	--	--	--	--	--	--	--	--	--	--	--	--	--	--	--	--	--	--	--	--	--	--	--	--	--	--	--	--	--	--	--	--	--	--	--	--	--	--	--	--	--	--	--	--	--	--	--	--	--	--	--	--	--	--	--	--	--	--	--	--	--	--	--	--	--	--	--	--	--	--	--	--	--	--	--	--	--	--	--	--	--	--	--	--	--	--	--	--	--	--	--	--	--	--	--	--	--	--	--	--	--	--	--	--	--	--	--	--	--	--	--	--	--	--	--	--	--	--	--	--	--	--	--	--	--	--	--	--	--	--	--	--	--	--	--	--	--	--	--	--	--	--	--	--	--	--	--	--	--	--	--	--	--	--	--	--	--	--	--	--	--	--	--	--	--	--	--	--	--	--	--	--	--	--	--	--	--	--	--	--	--	--	--	--	--	--	--	--	--	--	--	--	--	--	--	--	--	--	--	--	--	--	--	--	--	--	--	--	--	--	--	--	--	--	--	--	--	--	--	--	--	--	--	--	--	--	--	--	--	--	--	--	--	--	--	--	--	--	--	--	--	--	--	--	--	--	--	--	--	--	--	--	--	--	--	--	--	--	--	--	--	--	--	--	--	--	--	--	--	--	--	--	--	--	--	--	--	--	--	--	--	--	--	--	--	--	--	--	--	--	--	--	--	--	--	--	--	--	--	--	--	--	--	--	--	--	--	--	--	--	--	--	--	--	--	--	--	--	--	--	--	--	--	--	--	--	--	--	--	--	--	--	--	--	--	--	--	--	--	--	--	--	--	--	--	--	--	--