

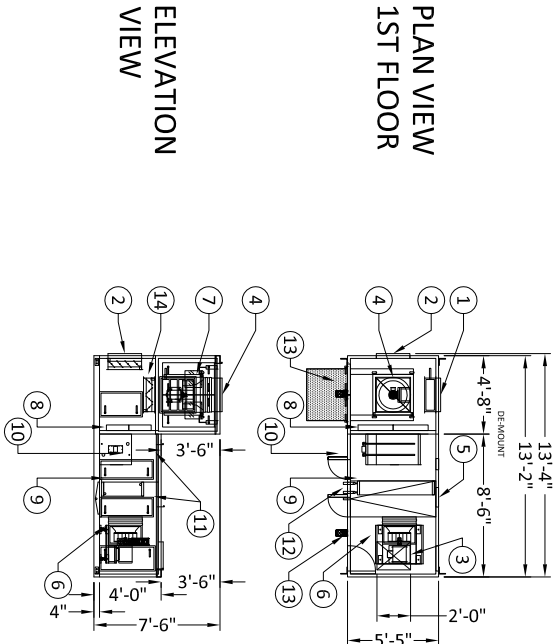
BUILDING 24 - 24-AC1 AIR HANDLING UNIT

A

GENERAL NOTE:
A.-UNIT SHALL BE KNOCK DOWN CONSTRUCTION.
B.- PROVIDE NECESSARY LIGHTING, SWITCHES AND CONVENIENCE OUTLET AS INDICATED IN SPECIFICATION 237300.

NOTES:

- 1.- EXHAUST AIR DAMPER (24"x24")
- 2.- OUTSIDE AIR DAMPER (24"x24")
- 3.- SUPPLY AIR OUTLET (24"x20")
- 4.- RETURN AIR OPENING (24"x24").
- 5.- 2" DOUBLE WALL CASING.
- 6.- SUPPLY FAN.
- 7.- RELIEF FAN, WITH ROLL OUT SERVICE TRACK AND REMOVABLE DOORS FOR SERVICE.
- 8.- 4" MERV 11 FILTER.
- 9.- CHILLED WATER COIL.
- 10.- INTEGRAL FACE AND BYPASS STEAM PREHEAT COIL.
- 11.- ACCESS DOOR.
- 12.- 1-1/4" DRAINS.
- 13.- VFD, SHOWN FOR REFERENCE. VFD'S SHIPPED LOOSE AND WILL NEED TO ENSURE PROPER NEC CLEARANCES PRIOR TO FINAL MOUNTING LOCATION.
- 14.- ECONOMIZER DAMPER (24"x24").



SCALE: NONE

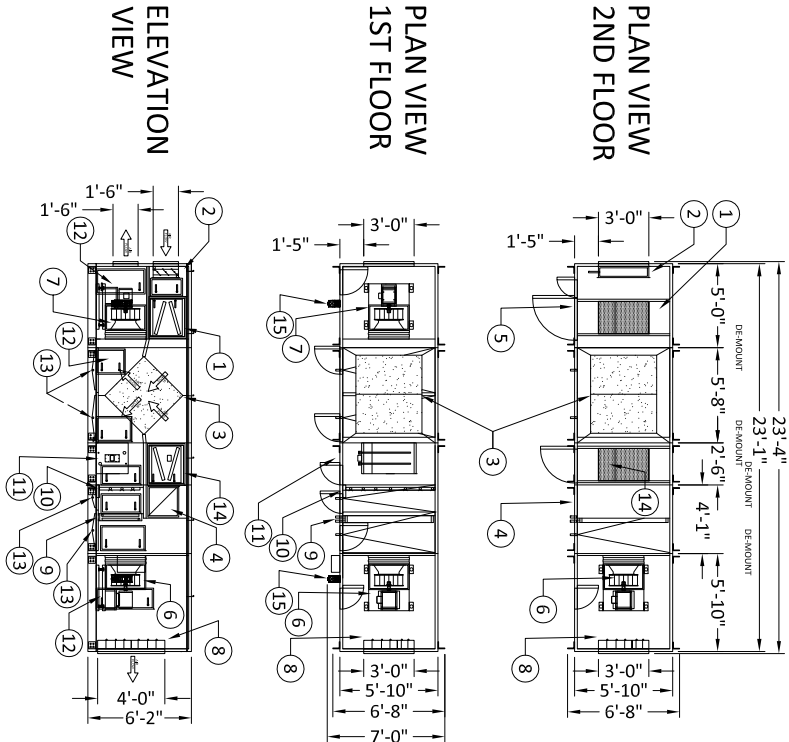
BUILDING 24 - 24-AC3 AIR HANDLING UNIT

C

GENERAL NOTE:
A.-UNIT SHALL BE KNOCK DOWN CONSTRUCTION.
B.- PROVIDE NECESSARY LIGHTING, SWITCHES AND CONVENIENCE OUTLET AS INDICATED IN SPECIFICATION 237300.

NOTES:

- 1.- 2" MERV 8 FILTER.
- 2.- RELIEF AIR DAMPER.
- 3.- HEAT EXCHANGER.
- 4.- RETURN AIR OPENING (20"x20").
- 5.- 2" DOUBLE WALL CASING.
- 6.- SUPPLY FAN.
- 7.- RELIEF FAN.
- 8.- 6" MERV 11 FILTER & 6" MERV 14 FILTER.
- 9.- CHILLED WATER COIL.
- 10.- HUMIDIFIER.
- 11.- INTEGRAL FACE AND BYPASS STEAM COIL (PRE-HEAT).
- 12.- ACCESS DOOR.
- 13.- 1-1/4" DRAINS.
- 14.- 2" MERV 8 FILTER.
- 15.- VFD, SHOWN FOR REFERENCE. VFD'S SHIPPED LOOSE AND WILL NEED TO ENSURE PROPER NEC CLEARANCES PRIOR TO FINAL MOUNTING LOCATION.



SCALE: NONE

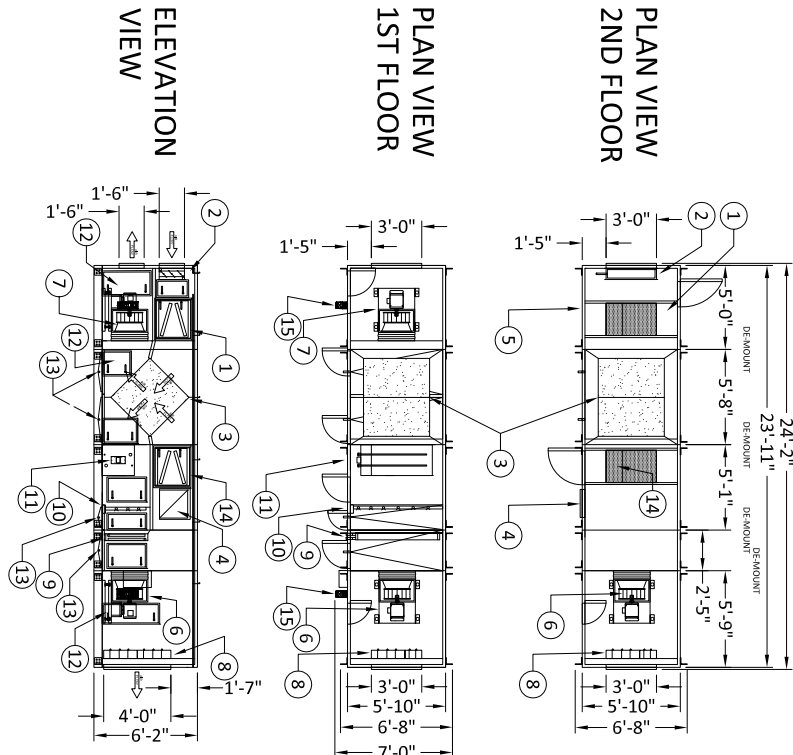
BUILDING 24 - 24-AC2 AIR HANDLING UNIT

B

GENERAL NOTE:
A.-UNIT SHALL BE KNOCK DOWN CONSTRUCTION.
B.- PROVIDE NECESSARY LIGHTING, SWITCHES AND CONVENIENCE OUTLET AS INDICATED IN SPECIFICATION 237300.

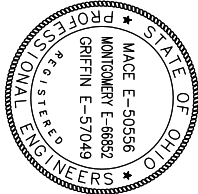
NOTES:

- 1.- 2" MERV 8 FILTER.
- 2.- RELIEF AIR DAMPER.
- 3.- HEAT EXCHANGER.
- 4.- RETURN AIR OPENING (20"x20").
- 5.- 2" DOUBLE WALL CASING.
- 6.- SUPPLY FAN.
- 7.- RELIEF FAN.
- 8.- 6" MERV 11 FILTER & 6" MERV 14 FILTER.
- 9.- CHILLED WATER COIL.
- 10.- HUMIDIFIER.
- 11.- INTEGRAL FACE AND BYPASS STEAM COIL (PRE-HEAT).
- 12.- ACCESS DOOR.
- 13.- 1-1/4" DRAINS.
- 14.- 2" MERV 8 FILTER.
- 15.- VFD, SHOWN FOR REFERENCE. VFD'S SHIPPED LOOSE AND WILL NEED TO ENSURE PROPER NEC CLEARANCES PRIOR TO FINAL MOUNTING LOCATION.



SCALE: NONE

1 DEL Revision #1
ADDENDUM Date: 12-09-15



COPYRIGHT
DYNAMIX ENGINEERING LTD.
ALL RIGHTS RESERVED

Dynamix
Engineering Ltd.
Facility Engineering Consultants
855 Grandview Avenue, 3rd Floor Columbus, Ohio 43215
Phone: (614)443-1178 Fax: (614)443-1594
Email: dynamix@dynamix-ltd.com

REPLACE OUTDATED EQUIPMENT
DEPARTMENT OF VETERNANS AFFAIRS
CHILLICOTHE, OHIO

SHEET TITLE
AIR HANDLER
DETAILS
BUILDING 24

SHEET NUMBER

R1-H0-03-1

DATE: 12-09-15
PROJECT NO.: 130121
DWN BY: DEL