

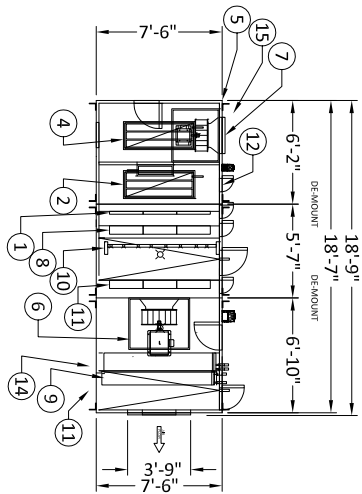
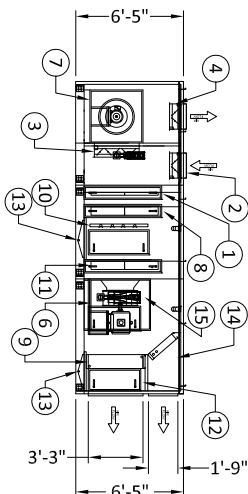
## BUILDING 30 - 30-AC2 AIR HANDLING UNIT

D

GENERAL NOTE:  
A.-UNIT SHALL BE KNOCK DOWN CONSTRUCTION.  
B.- PROVIDE NECESSARY LIGHTING, SWITCHES AND  
CONVENIENCE OUTLET AS INDICATED IN SPECIFICATION  
237300.

NOTES:

- 1.- 2" MERV 8 FILTER.
- 2.- OUTSIDE AIR DAMPER.
- 3.- MIXING DAMPER.
- 4.- RELIEF AIR DAMPER.
- 5.- 2" DOUBLE WALL CASING.
- 6.- SUPPLY FAN.
- 7.- RETURN FAN.
- 8.- 6" MERV 11 FILTER.
- 9.- CHILLED WATER COIL.
- 10.- HUMIDIFIER.
- 11.- 6" MERV 14 FILTER.
- 12.- ACCESS DOOR.
- 13.- 1-1/4" DRAINS.
- 14.- STEAM HEATING COIL.
- 15.- VFD, SHOWN FOR REFERENCE. VFD'S SHIPPED LOOSE  
AND WILL NEED TO ENSURE PROPER NEC CLEARANCES  
PRIOR TO FINAL MOUNTING LOCATION.

ELEVATION  
VIEW

SCALE: NONE

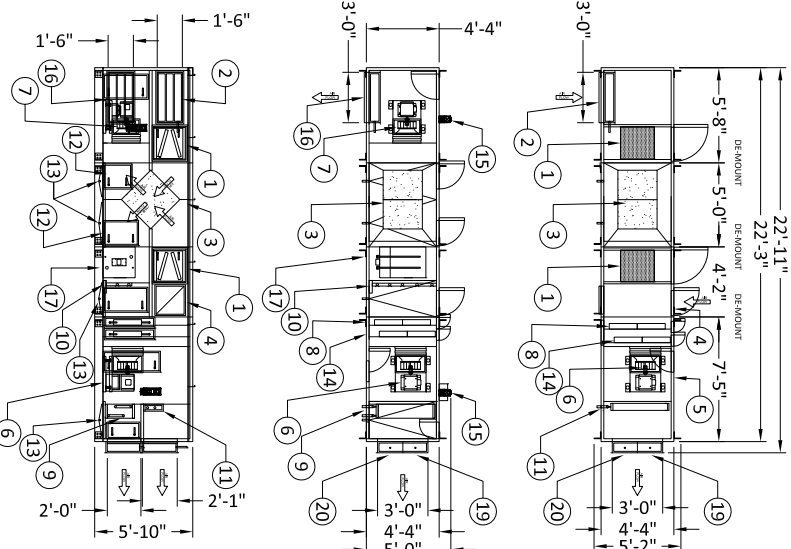
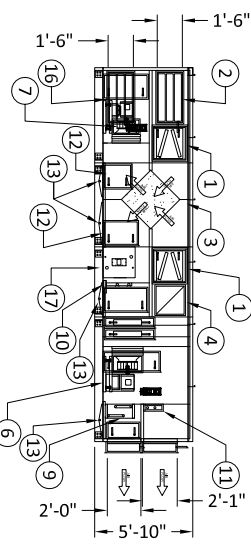
## BUILDING 30 - 30-AC4 AIR HANDLING UNIT

F

GENERAL NOTE:  
A.-UNIT SHALL BE KNOCK DOWN CONSTRUCTION.  
B.- PROVIDE NECESSARY LIGHTING, SWITCHES AND  
CONVENIENCE OUTLET AS INDICATED IN SPECIFICATION  
237300.

NOTES:

- 1.- 2" MERV 8 FILTER.
- 2.- OUTSIDE AIR DAMPER.
- 3.- HEAT EXCHANGER.
- 4.- RETURN AIR OPENING (20"X20").
- 5.- 2" DOUBLE WALL CASING.
- 6.- SUPPLY FAN.
- 7.- RELIEF FAN.
- 8.- 6" MERV 11 FILTER.
- 9.- CHILLED WATER COIL.
- 10.- HUMIDIFIER.
- 11.- STEAM COIL (RE-HEAT).
- 12.- ACCESS DOOR.
- 13.- 1-1/4" DRAINS.
- 14.- 6" MERV 14 FILTER.
- 15.- VFD, SHOWN FOR REFERENCE. VFD'S SHIPPED LOOSE  
AND WILL NEED TO ENSURE PROPER NEC CLEARANCES  
PRIOR TO FINAL MOUNTING LOCATION.
- 16.- RELIEF AIR DAMPER.
- 17.- INTEGRAL FACE AND BYPASS STEAM PREHEAT COIL.
- 18.- TWO ZONE HOT/COLD DECK DAMPER ARRANGEMENT.
- 19.- ZONE ONE
- 20.- ZONE TWO

ELEVATION  
VIEW

SCALE: NONE

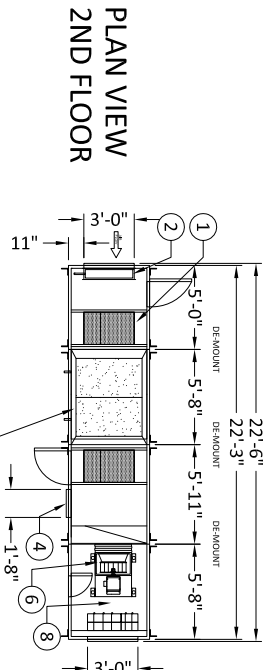
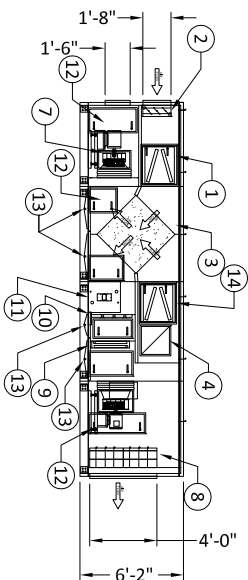
## BUILDING 30 - 30-AC3 AIR HANDLING UNIT

E

GENERAL NOTE:  
A.-UNIT SHALL BE KNOCK DOWN CONSTRUCTION.  
B.- PROVIDE NECESSARY LIGHTING, SWITCHES AND  
CONVENIENCE OUTLET AS INDICATED IN SPECIFICATION  
237300.

NOTES:

- 1.- 2" MERV 8 FILTER.
- 2.- OUTSIDE AIR DAMPER.
- 3.- HEAT EXCHANGER.
- 4.- RETURN AIR OPENING (20"X20").
- 5.- 2" DOUBLE WALL CASING.
- 6.- SUPPLY FAN.
- 7.- RELIEF FAN.
- 8.- 6" MERV 11 FILTER & 6" MERV 14 FILTER.
- 9.- CHILLED WATER COIL.
- 10.- HUMIDIFIER.
- 11.- INTEGRAL FACE AND BYPASS STEAM COIL (PRE-HEAT).
- 12.- ACCESS DOOR.
- 13.- 1-1/4" DRAINS.
- 14.- 2" MERV 8 FILTER.
- 15.- VFD, SHOWN FOR REFERENCE. VFD'S SHIPPED LOOSE  
AND WILL NEED TO ENSURE PROPER NEC CLEARANCES  
PRIOR TO FINAL MOUNTING LOCATION.

ELEVATION  
VIEW

SCALE: NONE

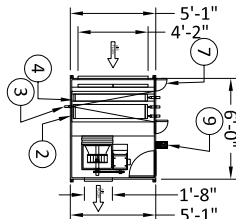
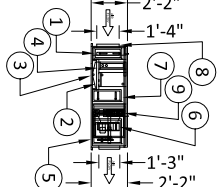
## BUILDING 30 - 30-AC6 AIR HANDLING UNIT

G

GENERAL NOTE:  
A.-UNIT SHALL BE KNOCK DOWN CONSTRUCTION.  
B.- PROVIDE NECESSARY LIGHTING, SWITCHES AND  
CONVENIENCE OUTLET AS INDICATED IN SPECIFICATION  
237300.

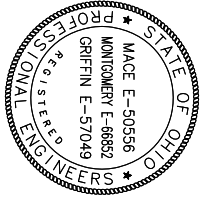
NOTES:

- 1.- 2" MERV 8 FILTER.
- 2.- CHILLED WATER COIL.
- 3.- 1-1/4" DRAINS.
- 4.- STEAM COIL.
- 5.- 1" DOUBLE WALL CASING.
- 6.- SUPPLY FAN.
- 7.- ACCESS DOOR.
- 8.- RETURN AIR OPENING (50"X16").
- 9.- VFD, SHOWN FOR REFERENCE. VFD'S SHIPPED LOOSE AND  
WILL NEED TO ENSURE PROPER NEC CLEARANCES PRIOR  
TO FINAL MOUNTING LOCATION.

ELEVATION  
VIEW

SCALE: NONE

1 DEL Revision #1  
ADDENDUM Date: 12-09-15



COPYRIGHT  
DYNAMIX ENGINEERING LTD.  
ALL RIGHTS RESERVED

**Dynamix**  
Engineering Ltd.  
Facility Engineering Consultants  
855 Grandview Avenue, 3rd Floor Columbus, Ohio 43215  
Phone: (614)443-1178 Fax: (614)443-1594  
Email: dynamix@dynamix-ltd.com

REPLACE OUTDATED EQUIPMENT  
DEPARTMENT OF VETERNANS AFFAIRS  
CHILLICOTHE, OHIO

SHEET TITLE  
AIR HANDLER  
DETAILS  
BUILDING 30

SHEET NUMBER

R1-H0-03-2