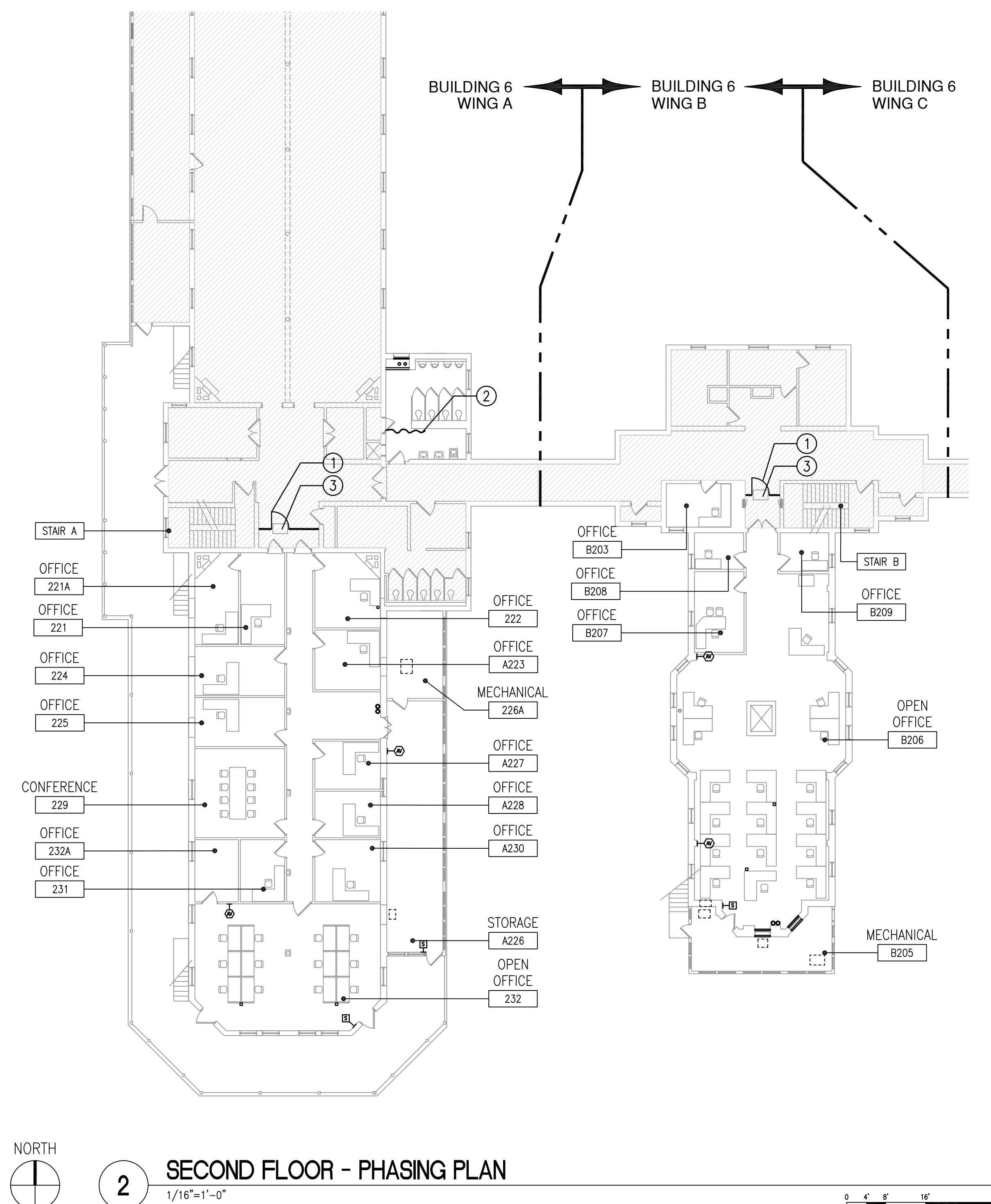
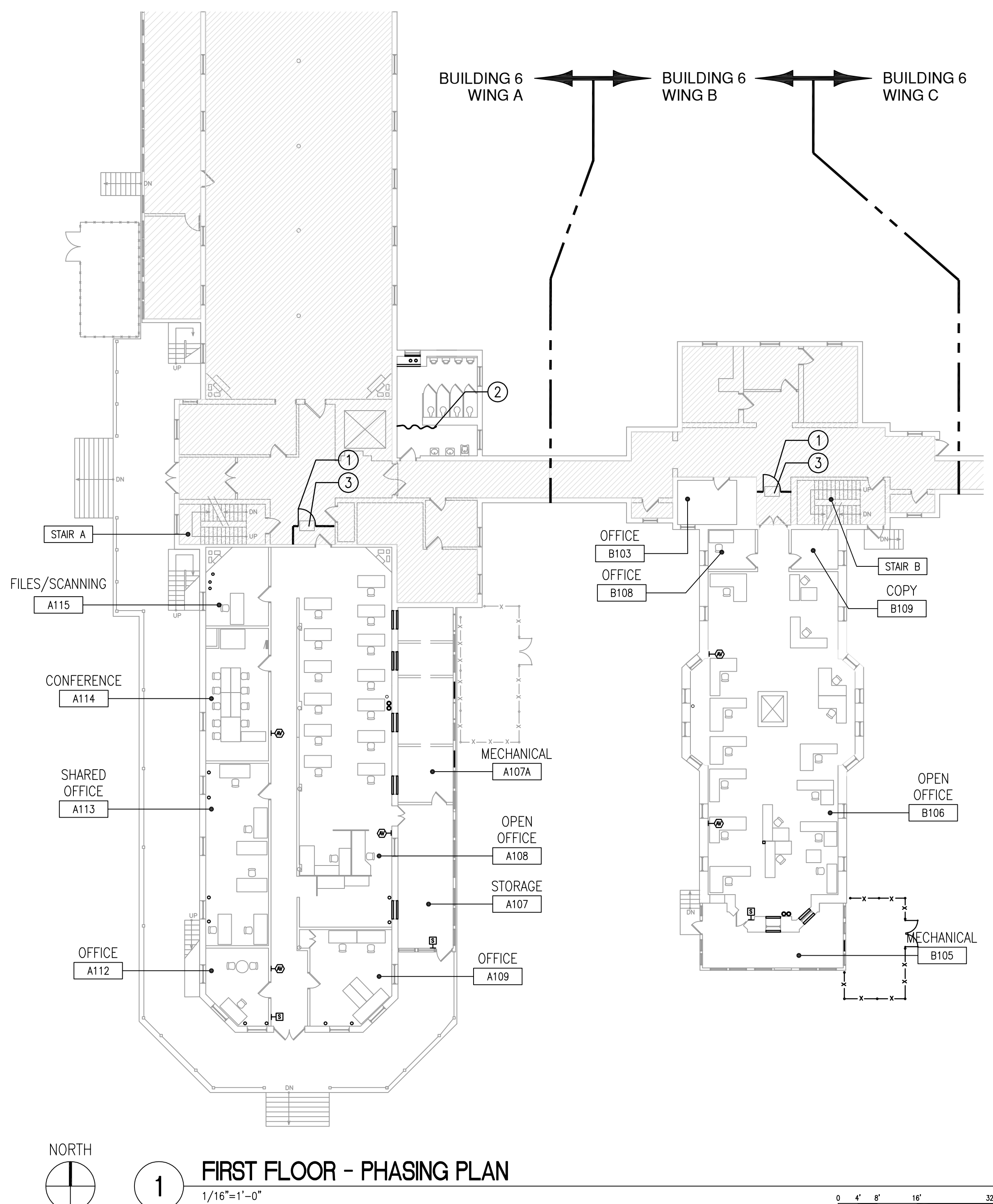
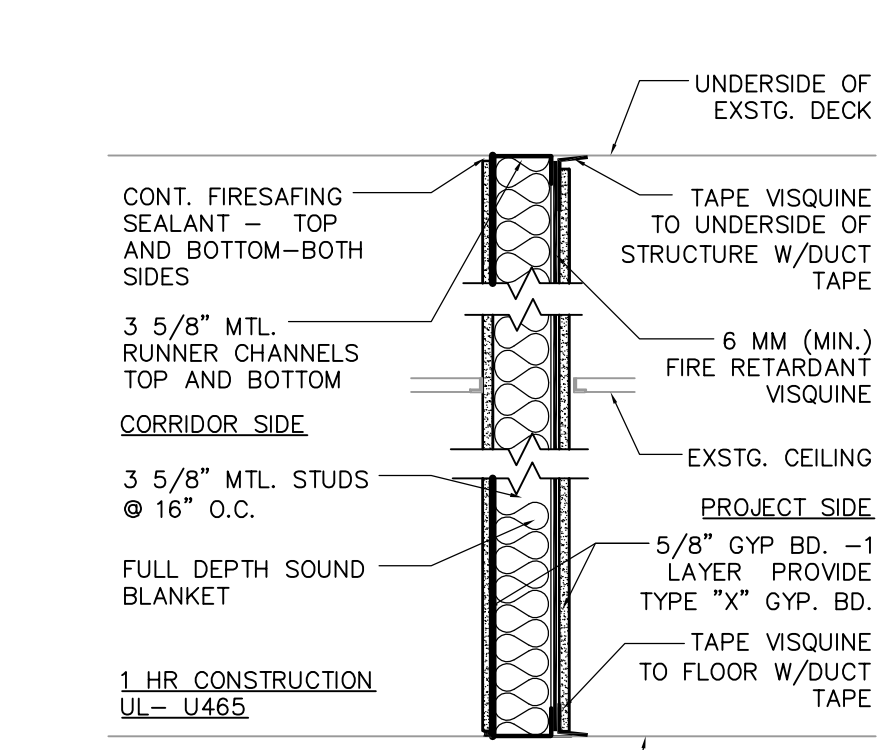


A three inches = one foot  
B one and one half inches = one foot  
C one inch = one foot  
D three quarters inch = one foot  
E three eighths inch = one foot  
F one quarter inch = one foot  
G one eighth inch = one foot  
H one sixteenth inch = one foot

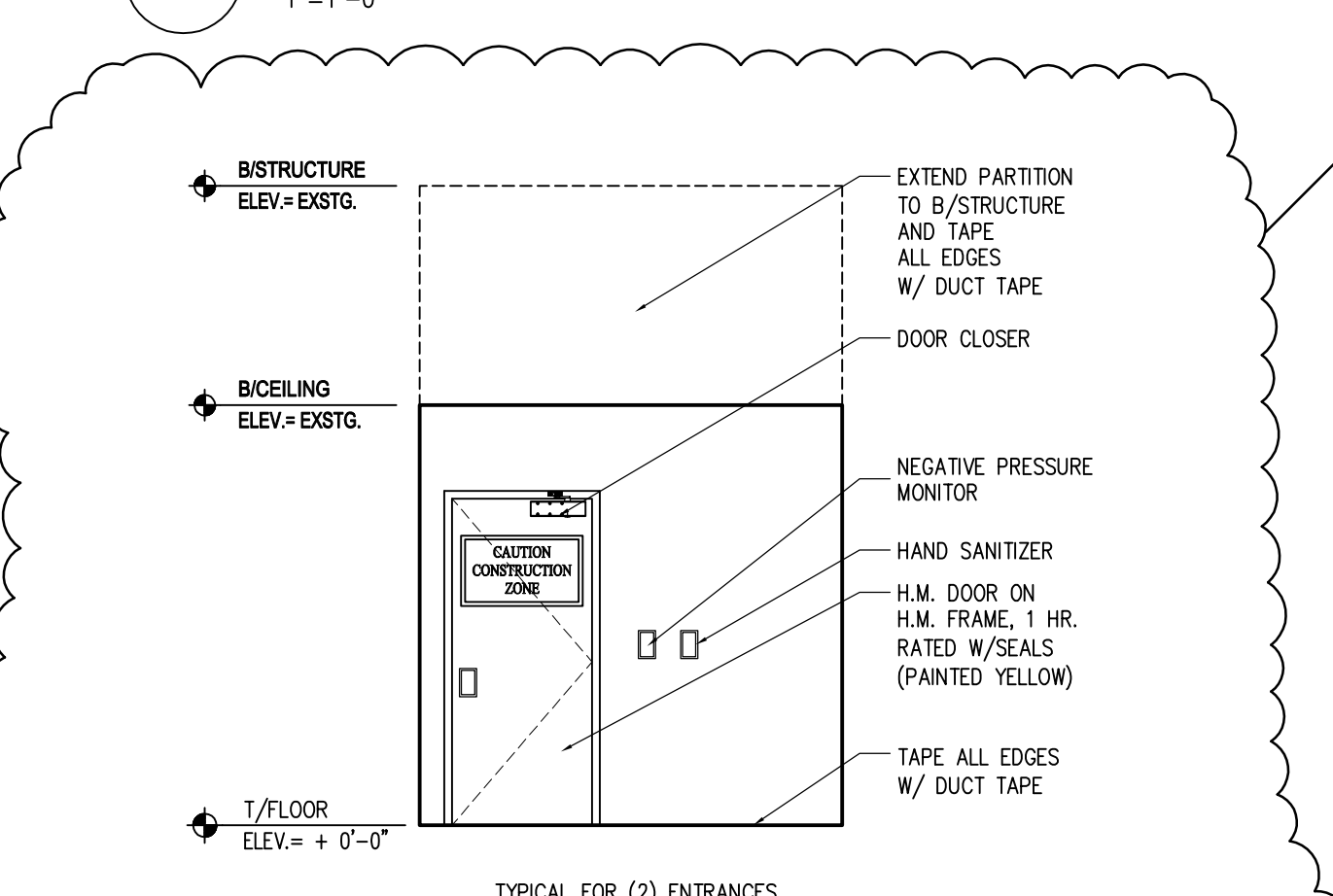


INFECTION CONTROL KEY NOTES

- 1 CONSTRUCTION BARRIER (1 HOUR WALL) WITH CONSTRUCTION ACCESS DOOR, SEE DETAILS 3 & 4 BELOW.
- 2 CONTRACTOR TO PROVIDE VISQUINE BARRIER WHEN COMPLETING WORK. COORDINATE ANY AFTER HOURS WORK WITH THE COR.
- 3 CONTRACTOR TO PROVIDE WALK OFF MAT 24"x36" (MIN.) CHANGE MATS AS NECESSARY.



3 TEMPORARY CONSTRUCTION PARTITION



4 TEMPORARY CONSTRUCTION PARTITION

INFECTIOUS CONTROL DESIGNATION

	LOW RISK	MEDIUM RISK	HIGH RISK	HIGHEST RISK
<b>TYPE A</b> Minimal Fire Risk	Office areas	Cardiology Echocardiography Endoscopy Nuclear Medicine Physical Therapy Radiology/MRI Respiratory Therapy	CCU Emergency Room Labor & Delivery Laboratories (specimen) Newborn Nursery Outpatient Surgery Pediatrics Pharmacy Post Anesthesia Care Unit Surgical Units Linen Kitchen & Canteen	Any area caring for immunocompromised patients Burn Unit Cardiac Cath Lab Central Sterile Supply Intensive Care Units Medical Unit Negative pressure isolation rooms Oncology Operating rooms including C-section rooms Dialysis
<b>TYPE B</b> Limited Fire Risk				
<b>TYPE C</b> Moderate Fire Risk				
<b>TYPE D</b> Significant Fire Risk				

Patient Risk Group	TYPE A	TYPE B	TYPE C	TYPE D
LOW Risk Group	I	II	III	III/IV
MEDIUM Risk Group	I	II	III	IV
HIGH Risk Group	I	II	III/IV	IV
HIGHEST Risk Group	II	III/IV	III/IV	IV

**Inspection and Non-Invasive Activities.**  
Includes, but is not limited to:

- removal of ceiling tiles for visual inspection limited to 1 tile per 50 square ft
- painting (but not sanding)
- wall covering, electrical trim work, minor plumbing, and activities which do not generate dust or require cutting of walls or access to ceilings other than for visual inspection.
- Removal of floor tile less than 25 square feet, non-ACM and no grinding or dust generating activities

**Small scale, short duration activities which create minimal dust**  
Includes, but is not limited to:

- installation of telephone and computer cabling
- access to chase spaces
- cutting of walls or ceiling where dust migration can be controlled.

**Work that generates a moderate to high level of dust or requires demolition or removal of any fixed building components or assemblies**  
Includes, but is not limited to:

- sanding of walls for painting or wall covering
- removal of floor coverings, ceiling tiles and casework
- new construction or renovations over 3 days duration
- major duct work, plumbing, piping, or electrical work
- soldering or brazing operations
- ANY activity that requires a burn permit

**Major demolition and construction projects**  
Includes, but is not limited to:

- activities which require consecutive work shifts
- requires heavy demolition or removal of a complete building system
- new construction or renovations over 3 days duration

INFECTION CONTROL NOTES

- RENOVATION PROJECT 556.12.145 IDENTIFIED AS LEVEL III/IV RISK GROUP
- ALL TEMPORARY CONSTRUCTION DOORS TO BE METAL, 1 HR. FIRE RATED, W/METAL FRAMES, CLOSERS AND SEALS.
- ALL CONSTRUCTION ENTRANCES TO BE PROPERLY LABELED TO COMPLY WITH VA AND OSHA REQUIREMENTS.
- CONTRACTOR TO PROVIDE 24" X 36" WALK OFF MATS AND CHANGE THEM AS NEEDED AT EACH ENTRANCE POINT.
- CONTRACTOR TO PROVIDE HAND SANITIZERS AT ALL ENTRANCE POINTS.
- CONTRACTOR TO SUPPLY SPILL KIT, TO INCLUDE SHOP VAC, MULTI PURPOSE SPILL CONTROL SORBENTS TO ABSORB NON AGGRESSIVE LIQUIDS UP TO 30 GALLONS.
- ALL NEW CONSTRUCTION MATERIALS, TOOLS AND EQUIPMENT PASSING THROUGH HOSPITAL TO BE COVERED WITH 4 MIL. POLY SHEETS.
- THE CONTRACTOR SHALL NOT BLOCK OR HINDER THE USE OF THE BUILDINGS BY PATIENTS, STAFF & VISITORS.
- ALL MATERIALS AND EQUIPMENT MUST BE PROPERLY STORED IN DESIGNATED AREAS.
- ALL DEBRIS AND GARBAGE THAT IS TO BE REMOVED THROUGH THE HOSPITAL MUST BE CONTAINED IN DUMP CARTS DESIGNED FOR THAT PURPOSE AND MUST BE COVERED WITH A FULL COVER OR LID.
- ALL DEBRIS AND GARBAGE THAT IS TO BE REMOVED THROUGH THE HOSPITAL MUST BE CONTAINED IN FLAMMABLE MATERIALS MAY NOT BE STORED IN BUILDINGS.
- ALL CONSTRUCTION DOORS TO BE PAINTED YELLOW

INFECTION CONTROL PRECAUTIONS - CLASS IV

- DURING CONSTRUCTION PROJECT**
  - ISOLATE HVAC SYSTEM IN AREA WHERE WORK IS BEING DONE TO PREVENT CONTAMINATION OF DUCT SYSTEM.
  - COMPLETE ALL CRITICAL BARRIERS I.E. GYPSUM BOARD, PLYWOOD, PLASTIC, TO SEAL AREA FROM NON-WORK AREA OR IMPLEMENT CONTROL CUBE METHOD (CART WITH PLASTIC COVERING AND SEALED CONNECTION TO WORK SITE WITH HEPA VACUUM FOR VACUUMING PRIOR TO EXIT) BEFORE CONSTRUCTION BEGINS.
  - MAINTAIN NEGATIVE AIR PRESSURE WITHIN WORK SITE UTILIZING HEPA EQUIPPED AIR FILTRATION UNITS.
  - SEAL HOLES, PIPES, CONDUITS, AND PUNCTURES APPROPRIATELY.
  - CONSTRUCT ANTEROOM AND REQUIRE ALL PERSONNEL TO PASS THROUGH THIS ROOM SO THEY CAN BE VACUUMED USING A HEPA VACUUM CLEANER BEFORE LEAVING WORK SITE OR THEY CAN WEAR CLOTH OR PAPER COVERALLS THAT ARE REMOVED EACH TIME THEY LEAVE THE WORK SITE.
  - ALL PERSONNEL ENTERING WORK SITE ARE REQUIRED TO WEAR SHOE COVERS. SHOE COVERS MUST BE CHANGED EACH TIME THE WORKER EXITS THE WORK AREA.
  - DO NOT REMOVE BARRIERS FROM WORK AREA UNTIL COMPLETED PROJECT IS INSPECTED BY THE OWNER'S SAFETY DEPARTMENT AND INFECTION CONTROL DEPARTMENT AND THOROUGHLY CLEANED BY THE OWNER'S ENVIRONMENTAL SERVICES DEPARTMENT
- UPON COMPLETION OF PROJECT**
  - REMOVE BARRIER MATERIAL CAREFULLY TO MINIMIZE SPREADING OF DIRT AND DEBRIS ASSOCIATED WITH CONSTRUCTION.
  - CONTAIN CONSTRUCTION WASTE BEFORE TRANSPORT IN TIGHTLY COVERED CONTAINERS.
  - COVER TRANSPORT RECEPTACLES OR CARTS. TAPE COVERING UNLESS SOLID LID
  - VACUUM WORK AREA WITH HEPA FILTERED VACUUMS.
  - WET MOP AREA WITH DISINFECTANT.
  - REMOVE ISOLATION OF HVAC SYSTEM IN AREAS WHERE WORK IS BEING PERFORMED.

PROJECT AREA CONTAINS LEAD PAINT. ALL AREAS OF FLAKING/LOOSE PAINT TO BE ABATED AS PER SECTION 02 83 33.13.

IDIO CONTRACT NO. VA69D-14-D-0109

AMENDMENT #1	12-11-15
100% CONSTRUCTION DOCUMENT SUBMISSION	08-07-15
95% CONSTRUCTION DOCUMENT SUBMISSION	05-18-15
65% DESIGN DEVELOPMENT SUBMISSION	04-03-15
35% SCHEMATIC DESIGN SUBMISSION	02-04-15
Revisions	Date

KEYPLAN

ARCHITECT + ENGINEERS:

**Bancroft**

700 Nicholas Blvd., Suite 403  
Elk Grove Village, IL 60007  
T: 847.952.7362 F: 847.952.9403  
www.bancroft-ae.com

Drawing Title  
INFECTIOUS CONTROL PLANS AND NOTES

Approved: Project Director

Project Title  
CLEMENT J. ZABLOCKI VAMC  
BUILDING 6 UPGRADE HVAC  
WINGS A + B

Location  
MILWAUKEE, WISCONSIN

Date  
08-07-2015

Checked  
KAR

Drawn  
KAR

Project Number  
695-15-119

Building Number  
6A + 6B

Drawing Number  
G-001

Office of Construction and Facilities Management

Department of Veterans Affairs