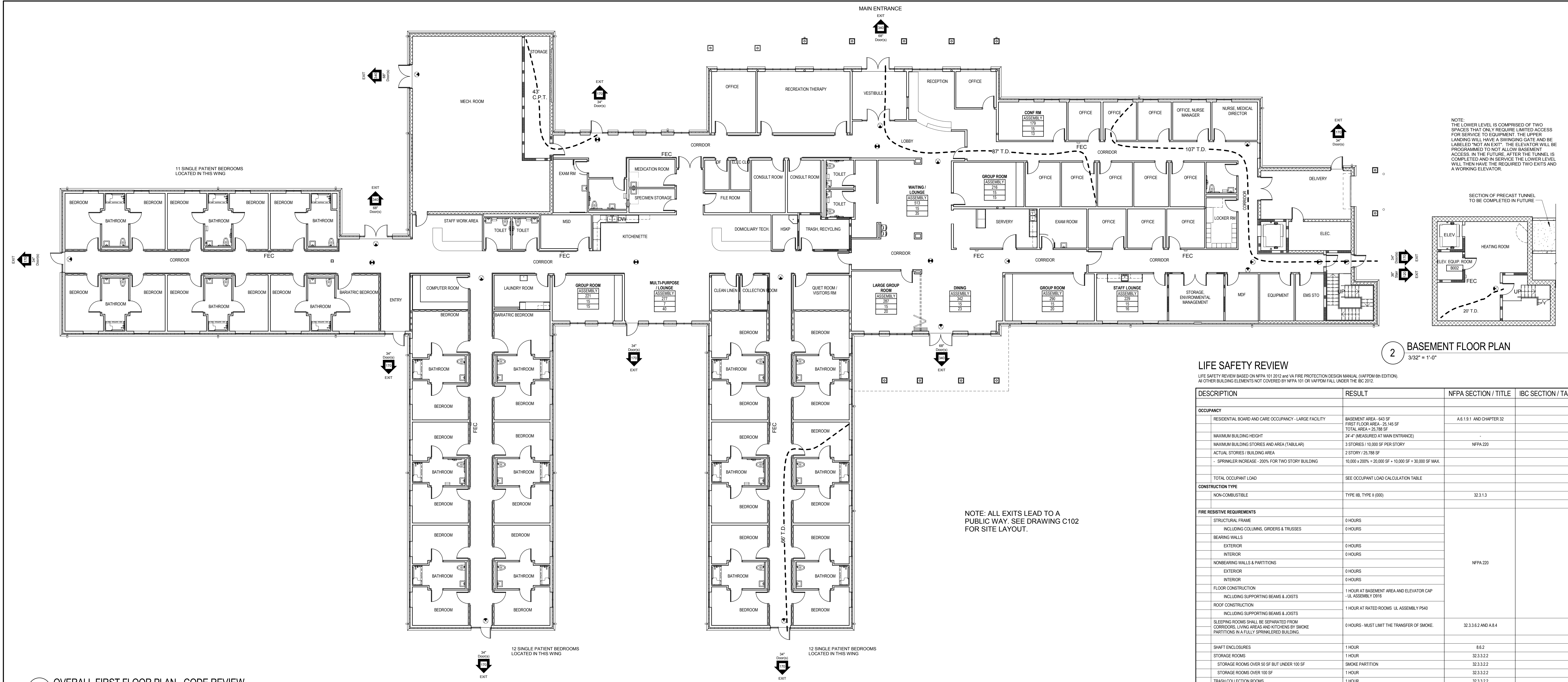


three inches = one foot
one and one half inch = one foot
one inch = one foot
three quarters inch = one foot
one half inch = one foot
three eighths inch = one foot
one quarter inch = one foot
one eighth inch = one foot



1 OVERALL FIRST FLOOR PLAN - CODE REVIEW
3/32" = 1'-0"

OCCUPANT LOAD CALCULATION TABLE			
USE (GROSS SF)	AREA PER USE	OCCUPANT LOAD FACTOR	OCCUPANT LOAD
BOARD AND CARE, LARGE ASSEMBLY	23,227 SQUARE FEET	200 SQUARE FEET/OCC.	116 OCCUPANTS
	2,569 SQUARE FEET	15 SQUARE FEET/OCC.	171 OCCUPANTS
			287 TOTAL OCCUPANTS

CODE REVIEW SYMBOL LEGEND

1101 - FUNCTION OF SPACE
150 - AREA (SF)
100 - EXIT GENERATOR (OCCS / SF)
15 - OCCUPANTS

(150) - (REQUIRED OCCUPANTS)
34" - EXIT WIDTH
DOORS(S) - EXIT COMPONENT
170 - NUMBER (170) INDICATES EXIT CAPACITY
EXIT - ARROW POINTS IN DIRECTION OF EXIT PATH

--- TRAVEL DISTANCE (T.D.) OR COMMON PATH OF TRAVEL (C.P.T.)
X - EXIT SIGN

SMOKE AND FIRE PARTITION LEGEND

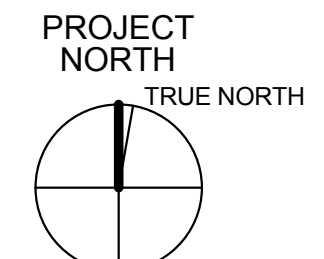
--- ONE HOUR FIRE PARTITION
- - - - - NON-RATED SMOKE PARTITION - SEAL WALLS TO CEILING

ALL RATED WALL CONSTRUCTION TO EXTEND TO THE UNDERSIDE OF THE FLOOR OR ROOF DECK ABOVE. ANY SPACE BETWEEN THE DECK AND WALL CONSTRUCTION TERMINATION AND ANY PENETRATIONS THROUGH RATED CONSTRUCTION SHALL BE PROPERLY PROTECTED BY A FIRESTOP SYSTEM OR DEVICE. (NFPA SECTION 8.3)

ALL PARTITIONS REQUIRED TO HAVE PROTECTED OPENINGS OR PENETRATIONS SHALL BE EFFECTIVELY AND PERMANENTLY IDENTIFIED WITH SIGNS OR STENCILING. (IBC 2012 SECTION 703.6)

2 BASEMENT FLOOR PLAN
3/32" = 1'-0"

DESCRIPTION	RESULT	NFPA SECTION / TITLE	IBC SECTION / TABLE
OCCUPANCY			
RESIDENTIAL BOARD AND CARE OCCUPANCY - LARGE FACILITY	BASEMENT AREA - 443 SF FIRST FLOOR AREA - 25,145 SF TOTAL AREA - 25,788 SF 24' 4" MEASURED AT MAIN ENTRANCE	A.8.1.9.1 AND CHAPTER 32	
MAXIMUM BUILDING HEIGHT	3 STORIES / 10,000 SF PER STORY	NFPA 220	
ACTUAL STORIES / BUILDING AREA	2 STORY / 25,788 SF - SPROKLER INCREASE - 200% FOR TWO STORY BUILDING		
TOTAL OCCUPANT LOAD	SEE OCCUPANT LOAD CALCULATION TABLE		
CONSTRUCTION TYPE			
NON-COMBUSTIBLE	TYPE IIB, TYPE II (000)	32.3.1.3	
FIRE RESISTIVE REQUIREMENTS			
STRUCTURAL FRAME	0 HOURS		
INCLUDING COLUMNS, GIRDERS & TRUSSES	0 HOURS		
BEARING WALLS	0 HOURS		
EXTERIOR	0 HOURS		
INTERIOR	0 HOURS		
NONBEARING WALLS & PARTITIONS			
EXTERIOR	0 HOURS		
INTERIOR	0 HOURS		
FLOOR CONSTRUCTION	1 HOUR AT BASEMENT AREA AND ELEVATOR CAP -UL ASSEMBLY D916		
INCLUDING SUPPORTING BEAMS & JOISTS			
ROOF CONSTRUCTION	1 HOUR AT RATED ROOMS UL ASSEMBLY P540		
INCLUDING SUPPORTING BEAMS & JOISTS			
SLEEPING ROOMS SHALL BE SEPARATED FROM CORRIDORS, LIVING AREAS AND KITCHENS BY SMOKE PARTITIONS IN A FULLY SPRINKLERED BUILDING.	0 HOURS - MUST LIMIT THE TRANSFER OF SMOKE.	32.3.3.6.2 AND A.8.4	
SHAFT ENCLOSURES	1 HOUR	8.8.2	
STORAGE ROOMS	1 HOUR	32.3.3.2.2	
STORAGE ROOMS OVER 50 SF BUT UNDER 100 SF	SMOKE PARTITION	32.3.3.2.2	
STORAGE ROOMS OVER 100 SF	1 HOUR	32.3.3.2.2	
TRASH COLLECTION ROOMS	1 HOUR	32.3.3.2.2	
SOILED LINEN ROOM	1 HOUR	32.3.3.2.2	
BULK LAUNDRY ROOM	1 HOUR - NOT APPLICABLE TO RESIDENTIAL LAUNDRY FACILITIES	32.3.3.2.2	
FIRE DETECTION AND PREVENTION			
AUTOMATIC SPRINKLERS - ALL FLOORS	FULLY SPRINKLERED BUILDING	CHAPTER 32	
ATTIC NOT USED FOR LIVING PURPOSES, STORAGE OR FUEL FIRED EQUIPMENT - SPRINKLERS NOT REQUIRED IN ATTIC.		32.3.5.1.2	
DETECTION, ALARM AND COMMUNICATIONS SYSTEMS		32.3.3.4.1 AND 9.6	
FIRE AND SMOKE ALARMS	REQUIRED TO BE INSTALLED PER SECTION 9.6		
FIRE EXTINGUISHERS	75' MAX TRAVEL TO EXTINGUISHER		
ANNUNCIATOR PANEL	TO BE READILY ACCESSIBLE BY EMERGENCY RESPONSE PERSONNEL AT PRIMARY POINT OF ENTRY	32.3.3.4.3	
EXITING REQUIREMENTS			
EGRESS WIDTH	-		
CORRIDORS	NOT LESS THAN ANY EGRESS COMPONENT OR 36"		
EXITING STAIRWAYS	4 INCHES PER PERSON	TABLE 7.3.3.1	
OTHER EGRESS COMPONENTS INCLUDING DOORS	2 INCHES PER PERSON		
OCCUPANT LOAD		TABLE 7.3.1.2	
BOARD AND CARE (BEDROOMS)	200 SF NET PER PERSON		
ASSEMBLY - LESS CONCENTRATED	15 SF NET PER PERSON		
EXITING ACCESS TRAVEL DISTANCE	250 FEET MAXIMUM TO NEAREST EXIT	32.3.2.6	
COMMON PATH OF TRAVEL	75 FEET MAXIMUM	32.3.2.2	
DEAD END CORRIDOR	30 FEET MAXIMUM	32.3.2.4	
BUILDING ELEMENTS			
STRUCTURAL LOADING			CHAPTER 16
ENERGY CONSERVATION			INTERIOR ENERGY CONSERVATION CODE



FULLY SPRINKLERED BID DOCUMENTS

CONSULTANTS: HOPE FURRER Associates, Inc.	SEAL 	ARCHITECTS/ENGINEERS: 6587 Hamilton Avenue Pittsburgh, Pennsylvania 15206 Ph: 412.287.7333 Fax: 412.287.7334 www.ae-works.com AE Works Project Number: 12028	Drawing Title CODE REVIEW	Project Title: Construct a New Residential Rehabilitation Treatment Program (RTP) Building	Project Number 512-531	Office of Construction and Facilities Management Department of Veterans Affairs	
# Revision	Date	Approved: Project Director	Location: Perry Point VA Medical Center Perry Point, MD 21902	Date: 06 - 11 - 15	Checked: DG	Drawn: AK	