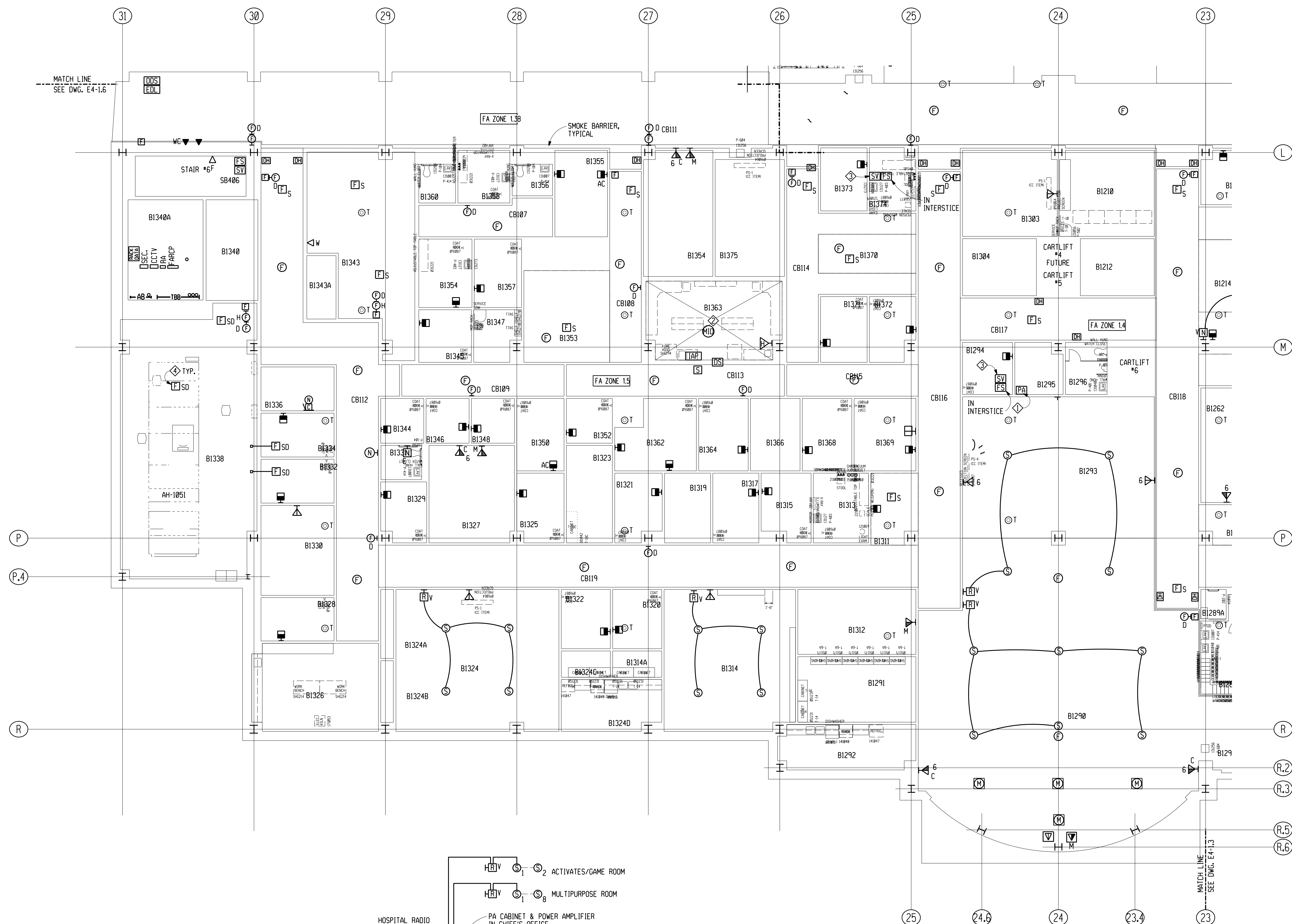
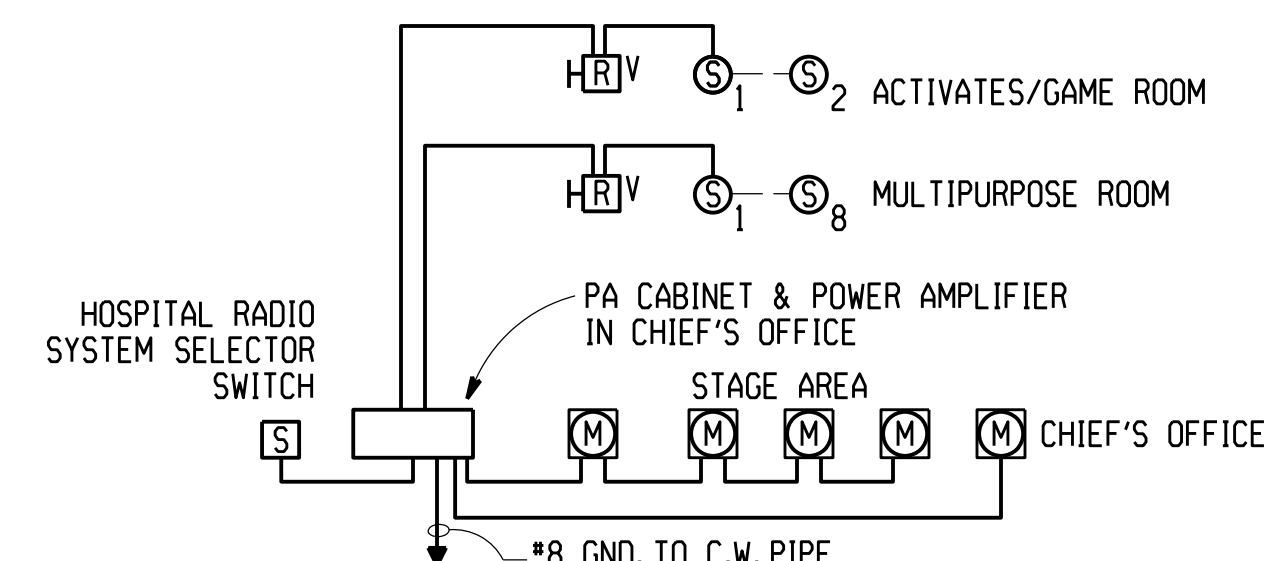


B1210 VENDING
B1212 SPD TERMINAL - CLEAN
B1240 RECREATION - MULTIPURPOSE
B1242 STORAGE - MULTIPURPOSE
B1292 CHILDERN - SERVING PERP
B1294 OFFICE/GAME ROOM
B1296 OFFICE, CLINICAL, DIETITIAN
B1298 STORAGE
B2626 TOILET - PATIENT M
B2628 CONFERENCE
B3004 SPD TERMINAL - SOILED
B3032 OFFICE, SECRETARY/WAITING
B3032 GROUP THERAPY
B3033 EXAM/TREAT/CONSULT
B3034 ACTIVITY/DINING SPACE
B3036 OFFICE, ACTIVITIES PROGRAM
B3145 OFFICE, PSYCHIATRIST
B3177 OFFICE, PSYCHOLOGIST
B3178 OFFICE, NURSE
B3180 OFFICE, OCCUPATIONAL THERAPIST
B3221 OFFICE, PSYCHOLOGIST
B3222 OFFICE, OCCUPATIONAL THERAPIST
B3223 MEDICATION
B3241 ACTIVITY - SOCIAL
B3248 CLOSET
B3248 CLOSET
B3248 STORAGE - ACTIVITY PROGRAM
B3240 OFFICE - ACTIVITY
B3242 OFFICE, EDUCATIONAL THERAPIST
B326 OFFICE - EDUCATIONAL THERAPIST
B327 GROUP THERAPY
B328 OFFICE, PHYSICIAN ASSIST.
B329 OFFICE, NURSE
B330 ACTIVITY - QUIET AREA
B333 TOILET - PATIENT
B3332 OFFICE, PSYCHOLOGIST
B3334 OFFICE, SOCIAL WORKER
B3336 RECEPTION
B3338 MECHANICAL ROOM
B3340 ELECTRICAL ROOM
B3342 MECHANICAL ROOM
B3342 SUBSTATION
B3342 ELECTRICAL ROOM
B3434 OFFICE, COUNSELOR - REHAB.
B3435 OFFICE, COUNSELOR - REHAB.
B3445 OFFICE, COUNSELOR - REHAB.
B3446 OFFICE, COUNSELOR - REHAB.
B3448 OFFICE, COUNSELOR - REHAB.
B3450 OFFICE, COUNSELOR - REHAB.
B3452 OFFICE, COUNSELOR - REHAB.
B3453 WAITING
B3454 CONFERENCE - GROUP THERAPY
B3455 RECEPTION
B3456 OFFICE, PATIENT URINE SPECIMEN
B3457 OFFICE, PSYCHOLOGIST
B3458 EXAM/TREAT/CONSULT
B3459 OFFICE, PATIENT
B3460 TOILET - PATIENT
B3462 OFFICE, SECRETARY
B3463 PHARMACY - PREPACKAGING
B3464 OFFICE, COUNCIL
B3466 STORAGE/UTILITY
B3467 OFFICE, SOCIAL WORKER
B3468 OFFICE, CHIEF - EXAM/TREATMENT
B3469 WAITING
B3471 OFFICE, TECHNICIAN - REHAB.
B3472 OFFICE, TECHNICIAN - REHAB.
B3473 RECEPTION
B3474 OFFICE, TREAT/CONSULT
B3475 CONFERENCE - GROUP THERAPY
CB007 CORRIDOR
CB008 CORRIDOR
CB009 CORRIDOR
CB011 CORRIDOR
CB012 CORRIDOR
CB014 CORRIDOR
CB015 CORRIDOR
CB016 CORRIDOR
CB017 CORRIDOR
CB018 CORRIDOR
CB049 STAIR NO. 1



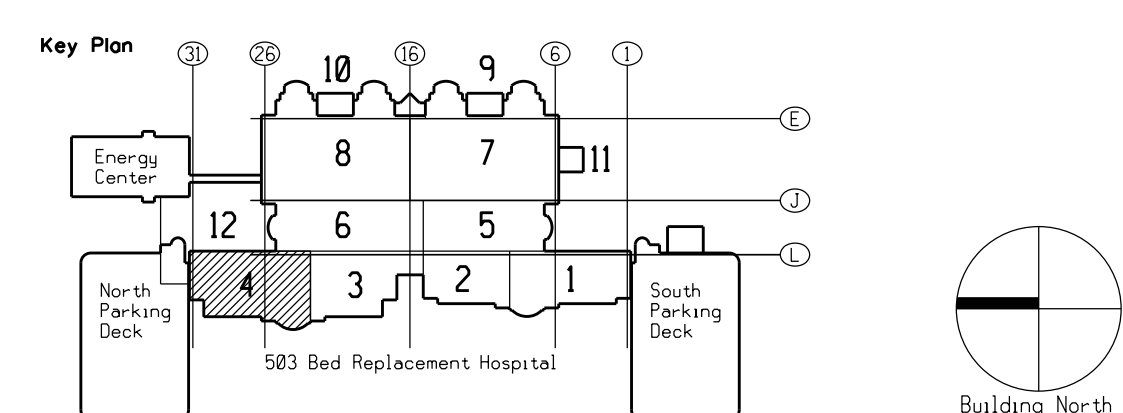
- ① PUBLIC ADDRESS SYSTEM FOR MULTIPURPOSE/
REC. ROOM, CONNECT TO RADIO SYSTEM AND
RECREATION SERVICE INTERCOM SYSTEM.
PROVIDE MUSIC CUT-OFF FOR LOCAL PAGING
FROM CHIEF'S OFFICE.
- ② THIS AREA TO BE PROTECTED BY A MOTION INTRUSION
DETECTION ALARM SYSTEM. REFER TO SPECIFICATIONS FOR
SYSTEM DESCRIPTION.
- ③ FOR SPRINKLER SYSTEM RISER.
- ④ PROVIDE REMOTE INDICATING STATION IN MECHANICAL ROOM FOR DUCT
SMOKE DETECTOR. DETECTOR ENTER IN MECHANICAL ROOM OR INTERSPACE
SPACE AND NOT READILY VISIBLE. FOR EXACT LOCATION OF SMOKE DUCT
DETECTORS REFER TO MECHANICAL DRAWINGS.

ACTIVITIES/MULTIPURPOSE ROOM SOUND SYSTEM DIAGRAM
N.T.S.



		<p>FULLY PROTECTED BY AUTOMATIC SPRINKLER SYSTEM</p> <p>FINAL SUBMISSION</p> <p>NOT FOR CONSTRUCTION</p>
<p>Revisions</p>	<p>Date</p>	<p>DEPARTMENTS - THIS DRAWING:</p> <p>00202 DRUG DEPENDENCE TREATMENT CLINIC 00200 ALCOHOL DEPENDENCE TREATMENT</p> <p>00260 OUTPATIENT PSYCHIATRIC - DAY TREATMENT</p> <p>00268 PHARMACY SERVICE</p> <p>00289 RECREATION SERVICE</p> <p>00300 DAY HOSPITAL</p> <p>SH&G Project No. 4999L</p>

SH&G
Smith, Hinchman & Grylls Associates, Inc.
Architects Engineers Planners
455 West Fort Street, Detroit, Michigan 48226
313/964-3000



Drawing Title
FIRST FLOOR PLAN
ZONE 4 - SIGNAL

Scale: $\frac{1}{8}" = 1'-0"$

Approved: *Area Project Manager*

Project Title	503 BED REPLACEMENT HOSPITAL
---------------	---------------------------------

Building Number

100

[illegible]

Detroit, Michigan

Date 4-29-91

Project No.

553-08

DRAWING NO.

E4-1.4

[illegible]

Dwg.

Veterans Administration