

A
three inches = one foot
one and one half inches = one foot
one inch = one foot
three quarters inch = one foot
one half inch = one foot
three eighths inch = one foot
one quarter inch = one foot
one eighth inch = one foot

		FIRE ALARM SYSTEM OPERATIONAL MATRIX															FIRE SAFETY FUNCTIONS														
		NORMAL			ALARM			SUPERVISORY			TROUBLE			MISC																	
		OUTPUT																													
		FIRE CONTROL PANEL IN "NORMAL CONDITION"																													
		ELEVATOR HOISTWAY PRESSURIZATION SYSTEM IN NORMAL CONDITION																													
		ALARM AT FACP																													
		ALARM AT REMOTE ANNUNCIATORS																													
		TRANSMIT ALARM TO CENTRAL STATION																													
		ACTIVATE NOTIFICATION APPLIANCES																													
		SUPERVISORY AT FACP																													
		SUPERVISORY AT ANNUNCIATOR																													
		TRANSMIT SUPERVISORY TO CENTRAL STATION																													
		TROUBLE AT FACP																													
		TROUBLE AT ANNUNCIATOR																													
		TRANSMIT TROUBLE TO SUPERVISING STATION																													
		DEACTIVATE NOTIFICATION APPLIANCES																													
		RESET CONTROL PANEL AND ALL DEVICES AND FUNCTIONS																													
		SHUT DOWN HVAC FAN UNITS (AHU-1 & AHU-2)																													
		CLOSE PASSIVE FIRE/SMOKE DAMPERS																													
		ACTIVATE ELEVATOR RECALL FUNCTION - PRIMARY																													
		ACTIVATE ELEVATOR RECALL FUNCTION - SECONDARY																													
		ACTIVATE ELEVATOR SHUNT TRIP FUNCTION																													
		ACTIVATE FIREMAN'S HAT IN ELEVATOR CAB																													
		OPEN ELEVATOR HOISTWAY PRESSURIZATION SYSTEM DAMPERS																													
		CLOSE ELEVATOR HOISTWAY PRESSURIZATION SYSTEM DAMPERS																													
		ACTIVATE ELEVATOR HOISTWAY PRESSURIZATION SYSTEM FANS																													
		SHUT DOWN ELEVATOR HOISTWAY PRESSURIZATION SYSTEM FANS																													
		ELEVATOR HOISTWAY PRESSURIZATION SYSTEM "OPERATING" INDICATOR																													
		ELEVATOR HOISTWAY PRESSURIZATION SYSTEM IN "AUTO" INDICATOR																													
		ELEVATOR HOISTWAY PRESSURIZATION SYSTEM IN "MANUAL" INDICATOR																													
		SMOKE CONTROL SYSTEM "OFF" INDICATOR																													
		ELEVATOR HOISTWAY PRESSURIZATION SYSTEM "FAULT" INDICATOR																													
INPUT		A	B	C	D	E	F	G	H	I	J	K	L	M	N	O	P	Q	R	S	T	U	V	W	X	Y	Z	AA	AB	AC	
FIRE ALARM SYSTEM AND SMOKE CONTROL NORMAL CONDITION	1	X	X																								X				1
MANUAL PULL STATION OPERATED	2			X	X	X	X									X	X														2
AREA SMOKE DETECTOR ALARM	3			X	X	X	X									X	X					X		X							3
BASEMENT ELEVATOR LOBBY SMOKE DETECTOR ALARM	4			X	X	X	X									X	X	X				X		X							4
LEVEL 1 ELEVATOR LOBBY SMOKE DETECTOR ALARM	5			X	X	X	X									X	X		X			X		X							5
LEVEL 1A ELEVATOR LOBBY SMOKE DETECTOR ALARM	6			X	X	X	X									X	X	X				X		X							6
LEVEL 2 ELEVATOR LOBBY SMOKE DETECTOR ALARM	7			X	X	X	X									X	X	X				X		X							7
ELEVATOR MACHINE ROOM SMOKE DETECTOR ALARM	8			X	X	X	X									X	X	X			X	X	X								8
ELEVATOR MACHINE ROOM HEAT DETECTOR ALARM	9			X	X	X	X									X	X	X		(3)		X		X							9
ELEVATOR TOP OF HOISTWAY HEAT DETECTOR ALARM	10			X	X	X	X									X	X	X		(3)											10
ELEVATOR PIT HEAT DETECTOR ALARM	11			X	X	X	X									X	X		X		X										11
ELEVATOR SHAFT SMOKE DETECTOR ALARM	12			X	X	X	X									X	X	X			X										12
ELEV HOISTWAY PRESSURIZATION FAN STATUS - PROOF OF FLOW AND DAMPERS OPEN	13																									X					13
ELEV HOISTWAY PRESSURIZATION FAN STATUS - FAILED TO OPERATE	14							X	X	X																				X	14
ELEV HOISTWAY PRESSURIZATION DAMPERS FAILED TO OPEN	16							X	X	X																				X	16
ELEV HOISTWAY PRESSURIZATION SYSTEM POWER FAILURE	17							X	X	X																				X	17
ELEV HOISTWAY PRESSURIZATION ON/OFF/AUTO SWITCH "OFF"	18							X	X	X													X		X				X		18
ELEV HOISTWAY PRESSURIZATION ON/OFF/AUTO SWITCH "ON"	19																					X		X				X			
FIRE SPRINKLER FLOW ALARM	20			X	X	X	X									X	X														20
FIRE SPRINKLER TAMPER SWITCH OPERATED	21							X	X	X																					21
DUCT MOUNTED SMOKE DETECTOR ALARM	22							X	X	X						X	X						(1)		(1)						22
POWER FAILURE	23										X	X	X																		23
GENERAL TROUBLE CONDITION	24										X	X	X																		24
SYSTEM SILENCE	25													X																	25
SYSTEM RESET	26														X								X		X						26
		A	B	C	D	E	F	G	H	I	J	K	L	M	N	O	P	Q	R	S	T	U	V	W	X	Y	Z	AA	AB	AC	
NOTES: 1. DUCT SMOKE DETECTOR FOR PRESSURIZATION FAN, ONLY. 2. FAN PRESSURIZATION SYTEM TO HAVE MANUAL AND AUTOMATIC CONTROL AT FIRE PANEL VIA ON/OFF/AUTO SWITCHES. PROVIDE LEDS TO INDICATE SYSTEM STATUS PER CODE. 3. PROVIDE 10 SECOND DELAY PRIOR TO OPERATION OF SHUNT TRIP PER VA REQUIREMENTS.																															

FIRE PROTECTION NOTES:

1. SPRINKLER PROTECTION: TO DETERMINE SPACING AND SIZING, APPLY THE FOLLOWING COVERAGE CLASSIFICATIONS:
A. LIGHT HAZARD OCCUPANCIES: PATIENT CARE, TREATMENT, AND CUSTOMARY ACCESS AREAS.
B. ORDINARY HAZARD GROUP 1 OCCUPANCIES: LABORATORIES, MECHANICAL EQUIPMENT ROOMS, TRANSFORMER ROOMS, ELECTRICAL SWITCHGEAR ROOMS, ELECTRIC CLOSETS, ELEVATOR MACHINE ROOMS.
C. ORDINARY HAZARD GROUP 2 OCCUPANCIES: STORAGE ROOMS, TRASH ROOMS, CLEAN AND SOILED LINEN ROOMS, LAUNDRY, STORAGE AREAS, BUILDING MANAGEMENT STORAGE, FILE STORAGE AREAS FOR THE ENTIRE AREA OF THE SPACE UP TO 1500 SQUARE FEET.
D. FOR AREAS NOT IDENTIFIED, UTILIZE NFPA HAZARD CLASSIFICATIONS.

2. HYDRAULIC CALCULATIONS: CALCULATED DEMAND INCLUDING HOSE STREAM REQUIREMENTS SHALL FALL NO LESS THAN 10 PERCENT BELOW THE AVAILABLE WATER SUPPLY CURVE.

3. WATER SUPPLY: BASE WATER SUPPLY ON A FLOW TEST OF:
A. LOCATION: BUILDING 40 FIRE RISER
D. STATIC PRESSURE: 75 PSI
E. RESIDUAL PRESSURE: 65 PSI
F. FLOW: 1140 GPM
G. DATE: 3/13/2014 PER DCI ENGINEERS, SPOKANE, WA E-MAIL.

4. ZONING:
A. FOR EACH SPRINKLER ZONE PROVIDE A CONTROL VALVE, CHECK VALVE, PRESSURE RELIEF VALVE PIPED TO A DRAIN, FLOW SWITCH AND A TEST AND DRAIN ASSEMBLY WITH PRESSURE GAUGE.
B. PROVIDE SPRINKLER ZONING FOR EACH LEVEL.
C. PROVIDE SEISMIC PROTECTION IN ACCORDANCE WITH NFPA 13.

BID DOCUMENT

11/02/2015

100% CONSTRUCTION DOCUMENT

1/26/2015

99% CONSTRUCTION DOCUMENT

12/17/14

95% CONSTRUCTION DOCUMENT

10/13/14

65% DESIGN DEVELOPMENT

6/27/14

SCHEMATIC DESIGN

3/28/14

Revisions

ISSUES

Date

PROJECT 2013-0512
CONTACT Kenton Alkens

100 SW Main Street
Suite 1600
Portland, OR 97204
TEL 503.382.2266
FAX 503.382.2262
www.interfaceengineering.com

11/02/15

14410 SE Petrovitsky Rd. Suite 206
Renton, WA 98058
425-291-7078

Drawing Title
FIRE PROTECTION SYMBOL LIST AND SHEET INDEX

Approved: Project Director
Approver

Project Title
INTENSIVE OUTPATIENT MENTAL HEALTH AND EDUCATION BUILDING
SPOKANE VA MEDICAL CENTER
SPOKANE, WASHINGTON 99205

Location
SPOKANE, WASHINGTON 99205

Issue Date
11/02/2015

Checked
KJA

Drawn
JBM

Project Number
668-313

Building Number
40A

Drawing Number
FA001

Dwg. of

Office of
Construction
and Facilities
Management

FIRE ALARM SYMBOL LIST

NOTE: This is a standard symbol list and not all items listed may be used.

Abbreviations		Fire Alarm	
(E)	EXISTING	KV	KILOVOLT
A	AMPERES, AMBER	KVA	KILOVOLT AMPERES
AFC	ABOVE FINISHED CEILING	KW	KILOWATT
AFF	ABOVE FINISHED FLOOR	LED	LIGHT EMITTING DIODE
AFG	ABOVE FINISHED GRADE	LNC	LIQUID TIGHT FLEXIBLE NONMETALLIC CONDUIT
AHJ	AUTHORITY HAVING JURISDICTION	LV	LOW VOLTAGE
AIC	AVAILABLE INTERRUPTING CAPACITY	MCA	MINIMUM CIRCUIT AMPS
ANSI	AMERICAN NATIONAL STANDARDS INSTITUTE	MDU	MULTI-DWELLING UNIT
ARF	ABOVE RAISED FLOOR	MHz	MEGAHERTZ
AWG	AMERICAN WIRE GAUGE	MISC	MISCELLANEOUS
BAS	BUILDING AUTOMATION SYSTEM	MOC	MAXIMUM OVERCURRENT PROTECTION
C	CONDUIT, CLOSE, CONTROL	MT, MTD	MOUNT, MOUNTED
CA	CABLE	N/A	NOT APPLICABLE
CAT	CATEGORY	NEC	NATIONAL ELECTRIC CODE
CFCI	CONTRACTOR FURNISHED CONTRACTOR INSTALLED	NEMA	NATIONAL ELECTRICAL MANUFACTURERS ASSOCIATION
CFOI	CONTRACTOR FURNISHED OWNER INSTALLED	NESC	NATIONAL ELECTRIC SAFETY CODE
CLG	CEILING	NTS	NOT TO SCALE
COORD	COORDINATE	OC	ON CENTER
CU	COPPER	OFCI	OWNER FURNISHED, CONTRACTOR INSTALLED
dB	DECIBEL	OFOI	OWNER FURNISHED, OWNER INSTALLED
DIA	DIAMETER	OSP	OUTSIDE PLANT
DIM	DIMENSION	PH	PHASE
DIV	DIVISION	PIV	POST INDICATOR VALVE
DN	DOWN	QTY	QUANTITY
DTL	DETAIL	REQD	REQUIRED
DWG	DRAWING	RFI	REQUEST FOR INFORMATION
EA	EACH	RM	ROOM
EL	ELEVATION	SHT	SHEET
ENT	ELECTRICAL NON-METALLIC TUBING	SPD	SURGE PROTECTION DEVICE
ESD	ELECTROSTATIC DISCHARGE	SPKR	SPEAKER
FBO	FURNISHED BY OTHERS	STD	STANDARD
FF	FINISH FLOOR	TBB	TELECOMMUNICATIONS BONDING BACKBONE
FM	FIRE MAIN	TBD	TO BE DETERMINED
FMS	FACILITY MANAGEMENT SYSTEMS	TGB	TELECOMMUNICATIONS GROUNDING BUS BAR
FT	FOOT, FEET	TP	TRANSITION POINT
FTC	FIRE TERMINAL CABINET	TTB	TELEPHONE TERMINAL BOARD
G, GND	GROUND	TVSS	TRANSIENT VOLTAGE SURGE SUPPRESSOR
GE	GROUNDING EQUALIZER	TYP	TYPICAL
GFCI	GROUND FAULT CIRCUIT INTERRUPTER	UL	UNDERWRITERS LABORATORIES
GFI	GROUND FAULT INTERRUPTER	V	VOLTS, VOLTAGE
HC	HORIZONTAL CROSS CONNECT	VRFY	VERIFY
HH	HANDHOLE	W/	WITH
HT	HEIGHT	W/O	WITHOUT
ID	IDENTIFICATION	WAO	WORK AREA OUTLET
IEEE	INSTITUTE OF ELECTRICAL AND ELECTRONICS ENGINEERS	WP	WEATHERPROOF
IG	ISOLATED GROUND		
IN	INCH, INCHES		

General	
	DETAIL NUMBER AND SHEET LOCATION
	KEYED NOTE
	SECTION NUMBER AND SHEET LOCATION
	MECHANICAL EQUIPMENT TAG
Raceways	
	CONDUIT
	CONDUIT ELLED DOWN
	CONDUIT ELLED UP
	CONDUIT/WIRING STUBBED OUT WITH END CAP OR INSULATED PLASTIC BUSHING
Mechanical Controls Interface	
	FIRE/SMOKE DAMPER
	MOTORIZED DAMPER
	PRESSURE SWITCH
	POWER MONITORING RELAY

SHEET INDEX

FA001	FIRE PROTECTION SYMBOL LIST AND SHEET INDEX
FA002	SITE PLAN - FIRE PROTECTION
FA100	BASEMENT AND LEVEL 1A PLANS - FIRE PROTECTION
FA101	LEVEL 1 PLAN - FIRE PROTECTION
FA102	LEVEL 2 PLAN - FIRE PROTECTION
FA150	ROOF PLAN - FIRE PROTECTION
FA501	FIRE PROTECTION DETAILS
FA502	FIRE PROTECTION DETAILS

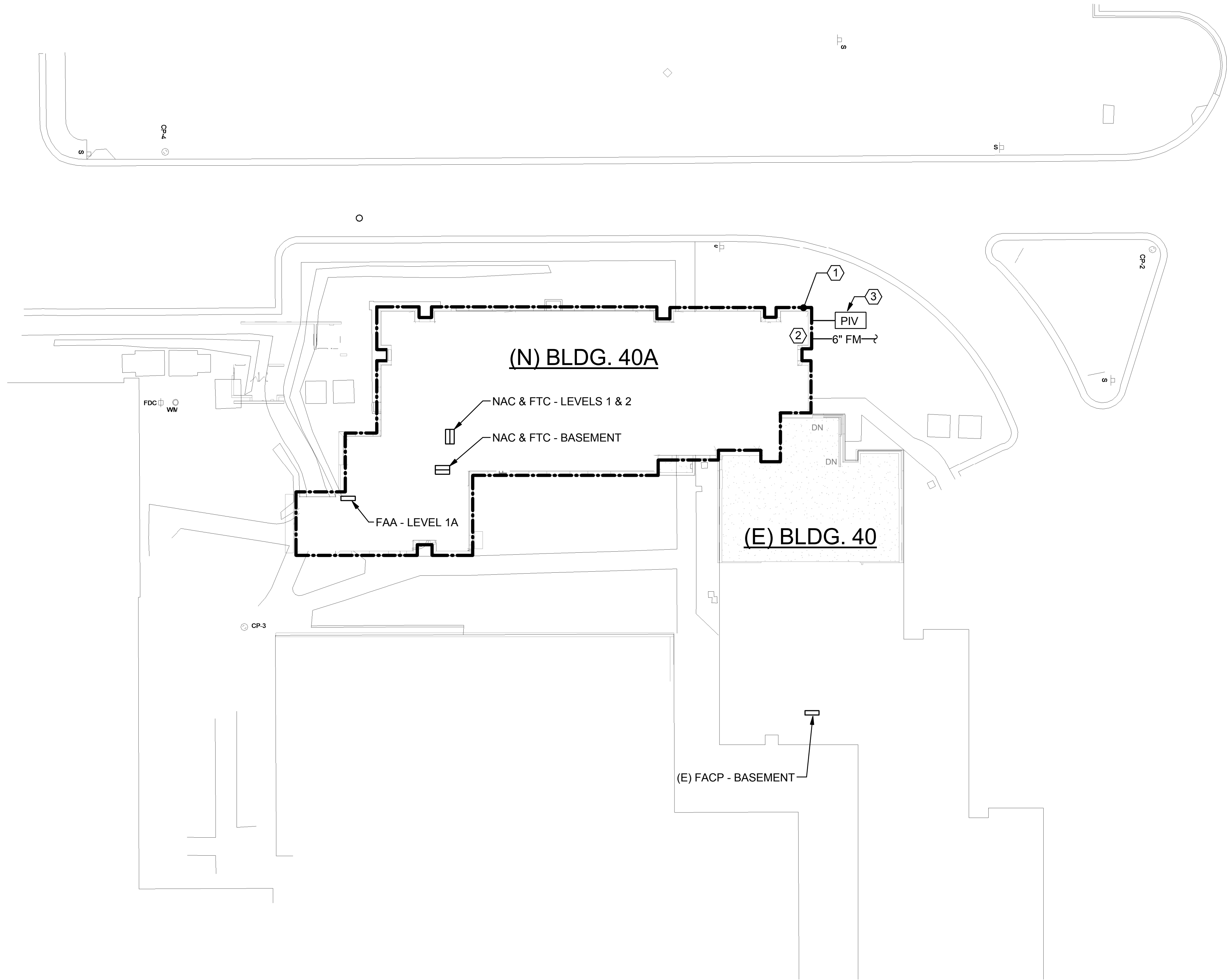
BID DOCUMENT
NOVEMBER/02/2015

Office of
Construction
and Facilities
Management

three inches = one foot
one and one half inches = one foot
one inch = one foot
three quarters inch = one foot
three eighths inch = one foot
one quarter inch = one foot
one eighth inch = one foot

SHEET KEYNOTES

- 1 PROVIDE FIRE ALARM SYSTEM AND FIRE SPRINKLER SYSTEM IN BUILDING 40A. CONNECT FIRE ALARM TO EXISTING FACP LOCATED IN BUILDING 40.
- 2 PROVIDE NEW FIRE SPRINKLER RISER AND SYSTEM FOR BUILDING 40A. IN ADDITION, PROVIDE NEW FIRE MAIN THROUGH BUILDING 40A TO ACT AS NEW SUPPLY FOR BUILDING 40 EXISTING FIRE SPRINKLER SYSTEM.
- 3 PROVIDE 1" CONDUIT AND CONNECT PIV TAMPER SWITCH TO FIRE ALARM AUXILIARY INPUT MODULE. LOCATE MODULE INSIDE OF BUILDING.



1 SITE PLAN - FIRE PROTECTION
1" = 20'-0"

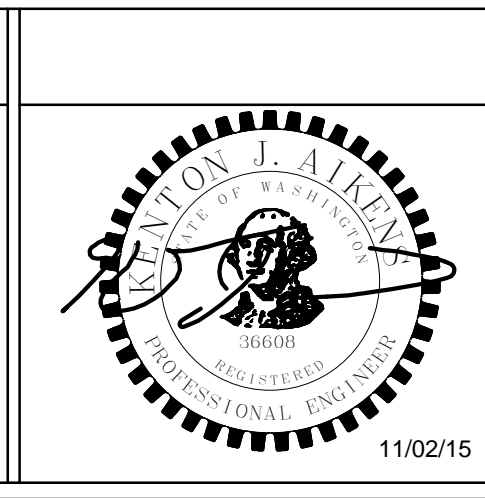
	BID DOCUMENT	11/02/2015
	100% CONSTRUCTION DOCUMENT	1/26/2015
		12/30/14
	99% CONSTRUCTION DOCUMENT	12/17/14
	95% CONSTRUCTION DOCUMENT	10/13/14
	65% DESIGN DEVELOPMENT	6/27/14
	SCHEMATIC DESIGN	3/28/14
Revisions	ISSUES	Date

CONSULTANTS:

PROJECT 2013-0512
CONTACT Kenton Alkens

INTERFACE
ENGINEERING

100 SW Main Street
Suite 1600
Portland, OR 97204
TEL 503.382.2266
FAX 503.382.2262
www.interfaceengineering.com



ARCHITECT/ENGINEERS:

KMA
ARCHITECTS

14410 SE Petrovitsky Rd. Suite 206
Renton, WA 98058
425-291-7078

Drawing Title
SITE PLAN - FIRE PROTECTION

Approved: Project Director
Approver

Project Title
INTENSIVE OUTPATIENT MENTAL HEALTH AND EDUCATION BUILDING
SPOKANE VA MEDICAL CENTER
SPOKANE, WASHINGTON 99205

Location
SPOKANE, WASHINGTON 99205

Issue Date
11/02/2015

Checked
KJA

Drawn
JBM

Project Number
668-313

Building Number
40A

Drawing Number
FA002

Dwg. of

Office of
Construction
and Facilities
Management

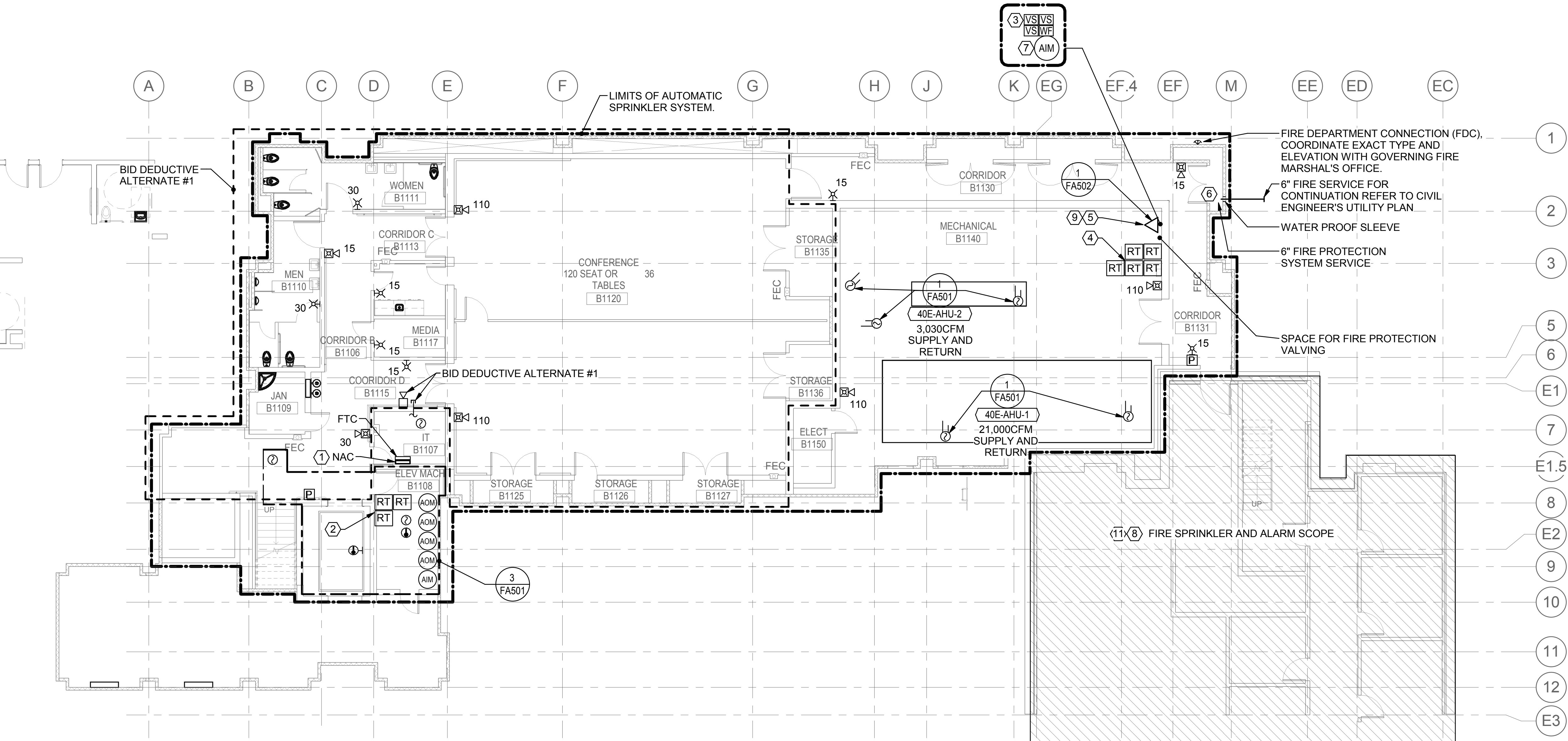
Department of
Veterans Affairs

DEDUCTIVE ALTERNATE NOTES:

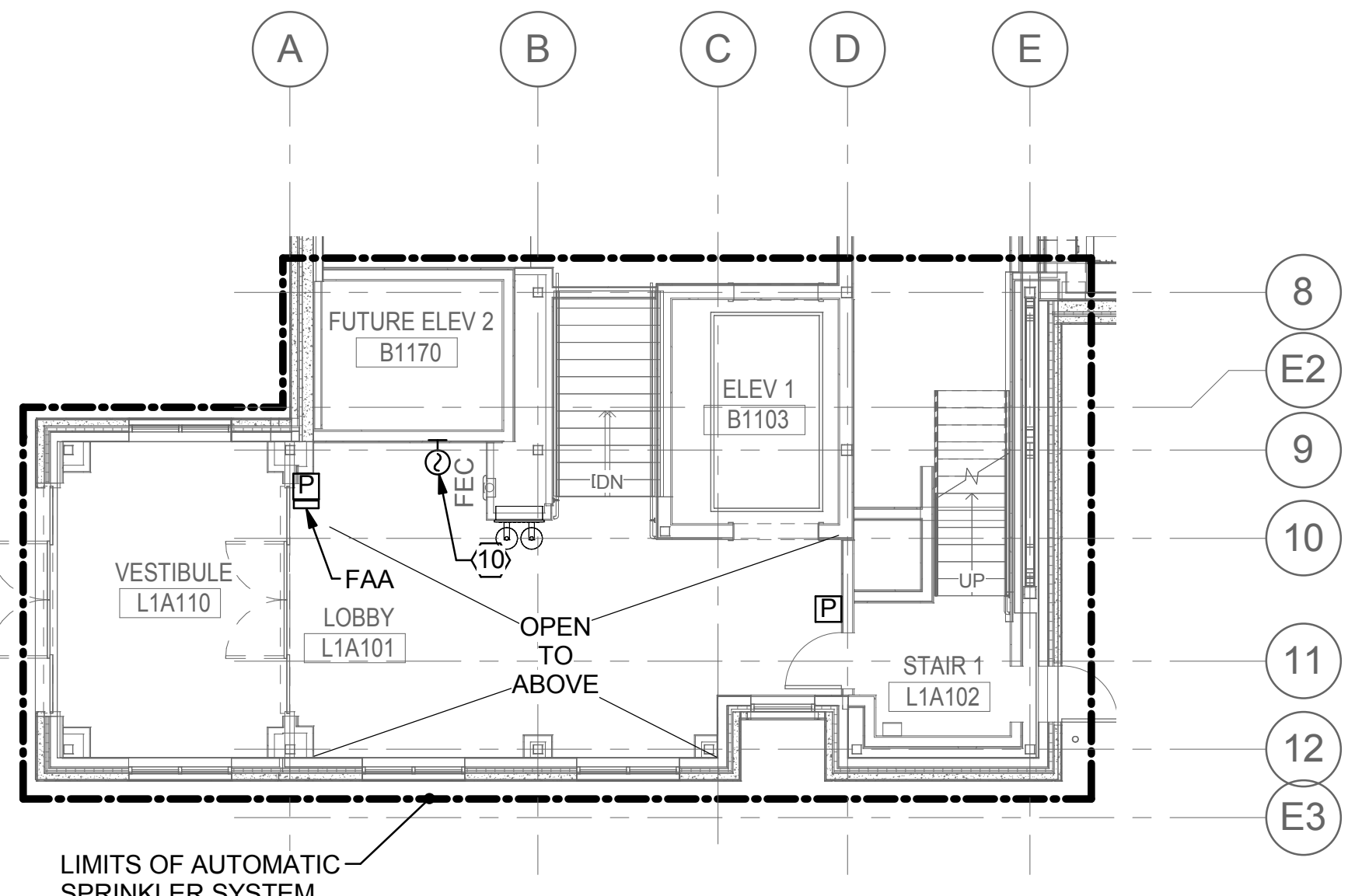
- A. DEDUCTIVE ALTERNATE #1: - - - - -
- 1 OMIT FIRE ALARM DETECTORS, HORNS AND STROBES FROM THE DESIGNATED AREA EXCEPT PROVIDE FIRE ALARM DUCT SMOKE DETECTORS, REMOTE TEST SWITCHES AND RELAYS ASSOCIATED WITH THE AIR HANDLING UNITS.
 - 2 PROVIDE SPARE CONDUIT WITH PULL STRING STUBBED INTO THE SPACE AND ROUTED BACK TO THE FIRE ALARM POWER SUPPLY.
 - 3 PROVIDE SINGLE AUDIBLE NOTIFICATION APPLIANCE ON EXTERIOR OF ROOM IT B1107 AS SHOWN ON PLANS.
 - 4 PROVIDE FIRE SPRINKLER SHELL SYSTEM. INSTALL UPRIGHT SPRINKLER HEADS ON 1" BUSHING TO ALLOW FOR THE PENDENT SPRINKLER HEADS TO BE INSTALLED DURING THE FUTURE TENANT IMPROVEMENT PHASE.

SHEET KEYNOTES

- 1 PROVIDE QUANTITY OF POWER SUPPLIES REQUIRED FOR COMPLETE SYSTEM OPERATION.
- 2 PROVIDE REMOTE TEST SWITCHES FOR ELEVATOR HEAT DETECTORS PER VA REQUIREMENTS.
- 3 COORDINATE LOCATION AND QUANTITY OF FIRE SPRINKLER TAMPER AND FLOW SWITCHES WITH FIRE SPRINKLER DESIGN.
- 4 REMOTE TEST SWITCHES FOR DUCT SMOKE DETECTORS THIS LEVEL.
- 5 FIRE ENTRANCE RISER. PROVIDE A COMBINATION SPRINKLER STANDPIPE/RISER IN STAIR WELL L1102 TO SERVE THE AUTOMATIC SPRINKLER SYSTEM AND TO PROVIDE A FIRE DEPARTMENT HOSE CONNECTION FOR EACH FLOOR LEVEL. THE HOSE CONNECTION SHALL BE LOCATED ON THE INTERMEDIATE LANDING OF EACH FLOOR LEVEL.
- 6 NEW FIRE SERVICE FOR BUILDING 40A AND 40.
- 7 INSTALL AIM INSIDE BUILDING FOR MONITORING PIV.
- 8 PROVIDE FIRE ALARM CONNECTIONS FROM EXISTING PANEL IN BUILDING 40 TO BUILDING 40A.
- 9 PROVIDE REQUIRED BACKFLOW PREVENTION FOR BUILDING 40A FIRE PROTECTION SYSTEM.
- 10 INSTALL DETECTOR WITHIN 60 INCHES OF THE TOP OF THE ELEVATOR DOOR.
- 11 PROVIDE 6" MAIN FROM BUILDING 40A TO EXISTING RISER IN BUILDING 40 AND THE NEW SERVICE IN TO THE EXISTING BUILDING 40 RISER. MODIFY EXISTING FIRE SPRINKLER SYSTEM IN BUILDING 40 AS NEEDED FOR NEW SERVICE.

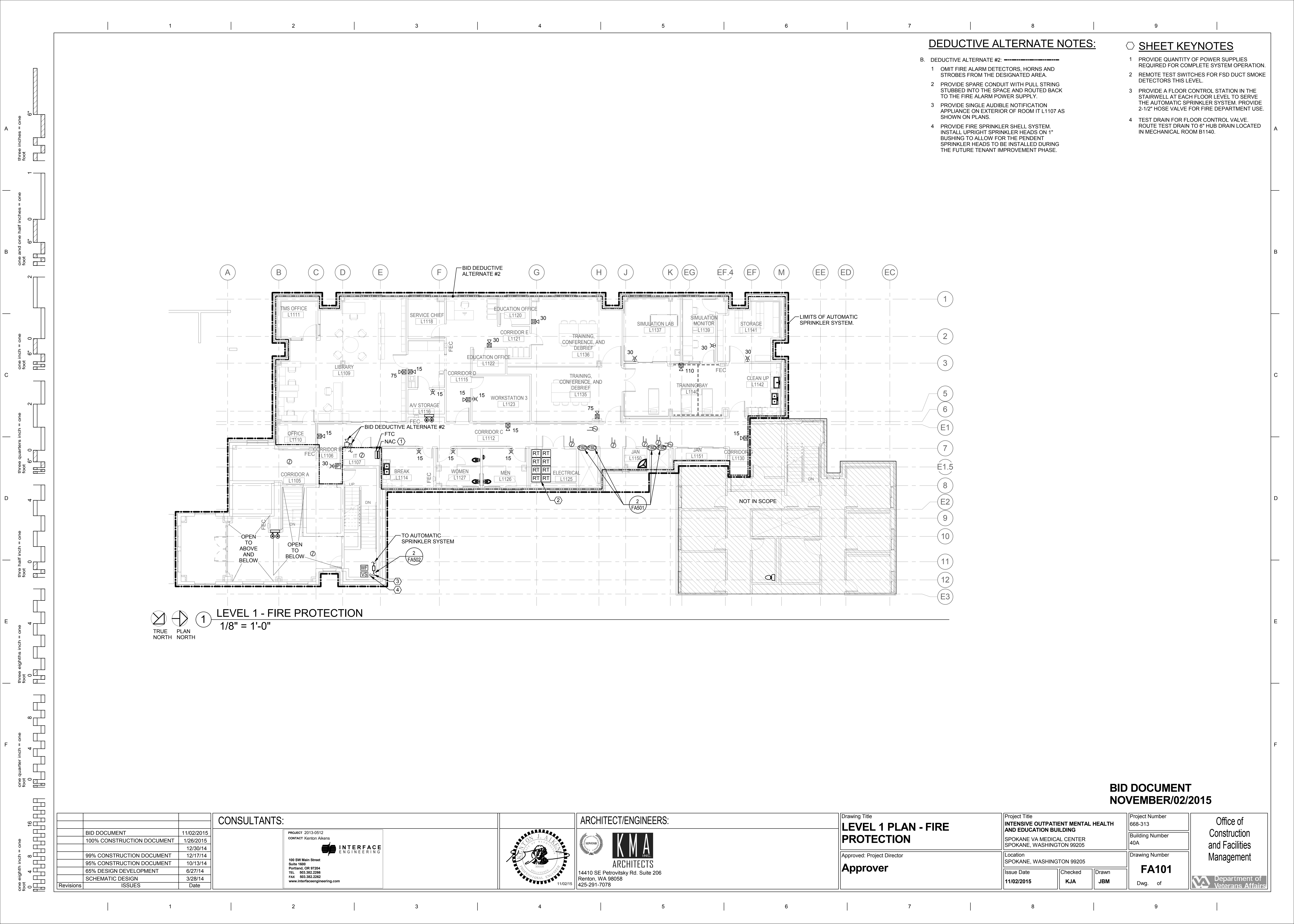


1 BASEMENT - FIRE PROTECTION
1/8" = 1'-0"



2 LEVEL 1A PLAN - FIRE PROTECTION
1/8" = 1'-0"

CONSULTANTS:		ARCHITECT/ENGINEERS:		Drawing Title BASEMENT AND LEVEL 1A PLANS - FIRE PROTECTION		Project Title INTENSIVE OUTPATIENT MENTAL HEALTH AND EDUCATION BUILDING		Project Number 668-313		Office of Construction and Facilities Management Department of Veterans Affairs
PROJECT 2013-0512 CONTACT Kenton Alkens INTERFACE ENGINEERING 100 SW Main Street Suite 1600 Portland, OR 97204 TEL 503.382.2266 FAX 503.382.2262 www.interfaceengineering.com		14410 SE Petrovitsky Rd. Suite 206 Renton, WA 98058 425-291-7078		Approved: Project Director Approver		SPOKANE VA MEDICAL CENTER SPOKANE, WASHINGTON 99205		Building Number 40A		
Revisions		11/02/15		Issue Date 11/02/2015		Checked KJA		Drawing Number FA100		
ISSUES		Date		Drawn JBM		Dwg. of				



DEDUCTIVE ALTERNATE NOTES:

- B. DEDUCTIVE ALTERNATE #2: -----
- 1 OMIT FIRE ALARM DETECTORS, HORNS AND STROBES FROM THE DESIGNATED AREA.
 - 2 PROVIDE SPARE CONDUIT WITH PULL STRING STUBBED INTO THE SPACE AND ROUTED BACK TO THE FIRE ALARM POWER SUPPLY.
 - 3 PROVIDE SINGLE AUDIBLE NOTIFICATION APPLIANCE ON EXTERIOR OF ROOM IT L1107 AS SHOWN ON PLANS.
 - 4 PROVIDE FIRE SPRINKLER SHELL SYSTEM. INSTALL UPRIGHT SPRINKLER HEADS ON 1" BUSHING TO ALLOW FOR THE PENDENT SPRINKLER HEADS TO BE INSTALLED DURING THE FUTURE TENANT IMPROVEMENT PHASE.

SHEET KEYNOTES

- 1 PROVIDE QUANTITY OF POWER SUPPLIES REQUIRED FOR COMPLETE SYSTEM OPERATION.
- 2 REMOTE TEST SWITCHES FOR FSD DUCT SMOKE DETECTORS THIS LEVEL.
- 3 PROVIDE A FLOOR CONTROL STATION IN THE STAIRWELL AT EACH FLOOR LEVEL TO SERVE THE AUTOMATIC SPRINKLER SYSTEM. PROVIDE 2-1/2" HOSE VALVE FOR FIRE DEPARTMENT USE.
- 4 TEST DRAIN FOR FLOOR CONTROL VALVE. ROUTE TEST DRAIN TO 6" HUB DRAIN LOCATED IN MECHANICAL ROOM B1140.

TRUE PLAN NORTH NORTH
1 LEVEL 1 - FIRE PROTECTION
1/8" = 1'-0"

		CONSULTANTS:				ARCHITECT/ENGINEERS:		Drawing Title		Project Title		Project Number		Office of Construction and Facilities Management	
								LEVEL 1 PLAN - FIRE PROTECTION		INTENSIVE OUTPATIENT MENTAL HEALTH AND EDUCATION BUILDING		668-313			
								Approved: Project Director		SPOKANE VA MEDICAL CENTER SPOKANE, WASHINGTON 99205		Building Number 40A			
								Approver		Location SPOKANE, WASHINGTON 99205		Drawing Number FA101			
Revisions		ISSUES		Date				Issue Date 11/02/2015		Checked KJA		Drawn JBM		Dwg. of	

PROJECT 2013-0512
CONTACT Kenton Atkins

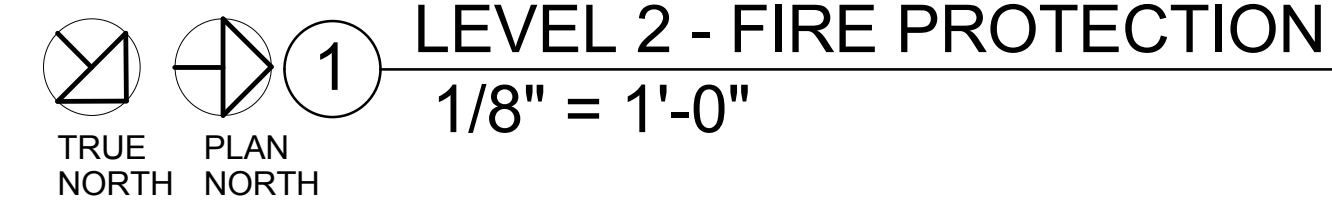
INTERFACE
ENGINEERING



100 SW Main Street
Suite 1600
Portland, OR 97204
TEL 503.382.2266
FAX 503.382.2262
www.interfaceengineering.com

11/02/15

ARCHITECTS

14410 SE Petrovitsky Rd. Suite 206
Renton, WA 98058
425-291-7078

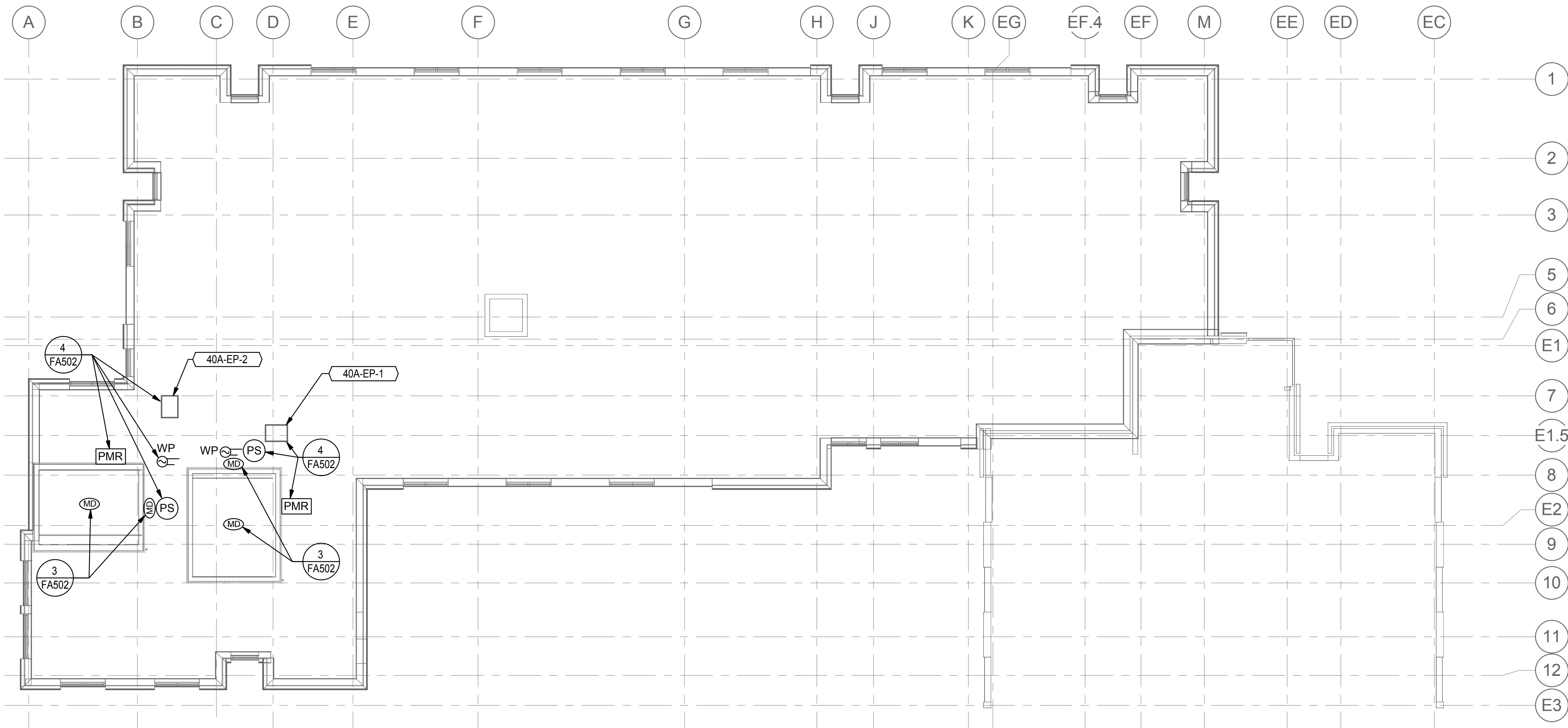


		CONSULTANTS:				ARCHITECT/ENGINEERS:		Drawing Title LEVEL 2 PLAN - FIRE PROTECTION			Project Title INTENSIVE OUTPATIENT MENTAL HEALTH AND EDUCATION BUILDING		Project Number 668-313		Office of Construction and Facilities Management			
BID DOCUMENT		11/02/2015		<div><div>PROJECT: 2013-0512 CONTACT: Kenton Aikens</div><div> INTERFACE ENGINEERING</div><div>100 SW Main Street Suite 1000 Portland, OR 97204 TEL 503.382.2266 FAX 503.382.2262 www.interfaceengineering.com</div></div>		<div> KMA ARCHITECTS</div> <div>14410 SE Petrovitsky Rd. Suite 206 Renton, WA 98058 425-291-7078</div>		Approved: Project Director Approver			Location SPOKANE, WASHINGTON 99205		Building Number 40A					
100% CONSTRUCTION DOCUMENT		1/26/2015											Drawing Number FA102					
99% CONSTRUCTION DOCUMENT		12/30/14											Issue Date 11/02/2015				Checked KJA	
95% CONSTRUCTION DOCUMENT		12/17/14																
65% DESIGN DEVELOPMENT		10/13/14																
SCHEMATIC DESIGN		6/27/14																
ISSUES		3/28/14																
Revisions		Date																

1
2
3
4
5
6
7
8
9

A
B
C
D
E
F

three inches = one foot
one and one half inches = one foot
one inch = one foot
three quarters inch = one foot
three half inch = one foot
three eighths inch = one foot
one quarter inch = one foot
one eighth inch = one foot



TRUE PLAN
NORTH NORTH

1 ROOF PLAN - FIRE PROTECTION
1/8" = 1'-0"

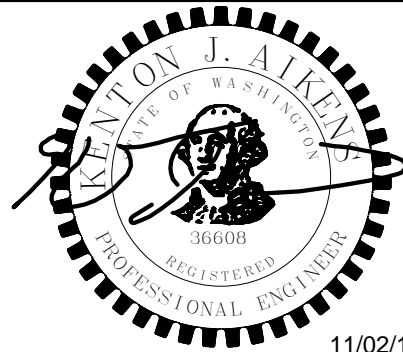
	BID DOCUMENT	11/02/2015
	100% CONSTRUCTION DOCUMENT	1/26/2015
		12/30/14
	99% CONSTRUCTION DOCUMENT	12/17/14
	95% CONSTRUCTION DOCUMENT	10/13/14
	65% DESIGN DEVELOPMENT	6/27/14
	SCHEMATIC DESIGN	3/28/14
Revisions	ISSUES	Date

CONSULTANTS:

PROJECT 2013-0512
CONTACT Kenton Alkens

INTERFACE
ENGINEERING

100 SW Main Street
Suite 1600
Portland, OR 97204
TEL 503.382.2266
FAX 503.382.2262
www.interfaceengineering.com



ARCHITECT/ENGINEERS:

KMA
ARCHITECTS

14410 SE Petrovitsky Rd. Suite 206
Renton, WA 98058
425-291-7078

Drawing Title
ROOF PLAN - FIRE PROTECTION

Approved: Project Director
Approver

Project Title
INTENSIVE OUTPATIENT MENTAL HEALTH AND EDUCATION BUILDING
SPOKANE VA MEDICAL CENTER
SPOKANE, WASHINGTON 99205

Location
SPOKANE, WASHINGTON 99205

Issue Date
11/02/2015

Checked
KJA

Drawn
AMS

Project Number
668-313

Building Number
40A

Drawing Number
FA150

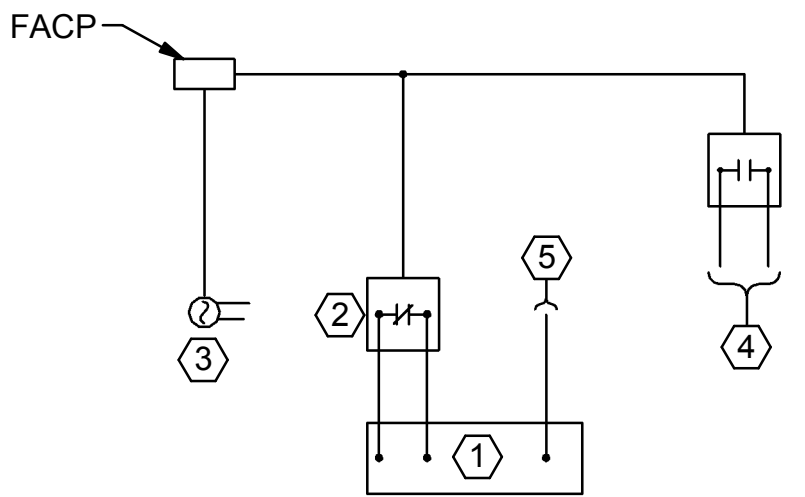
Dwg. of

Office of
Construction
and Facilities
Management

Department of Veterans Affairs

DETAIL 1 KEYNOTES

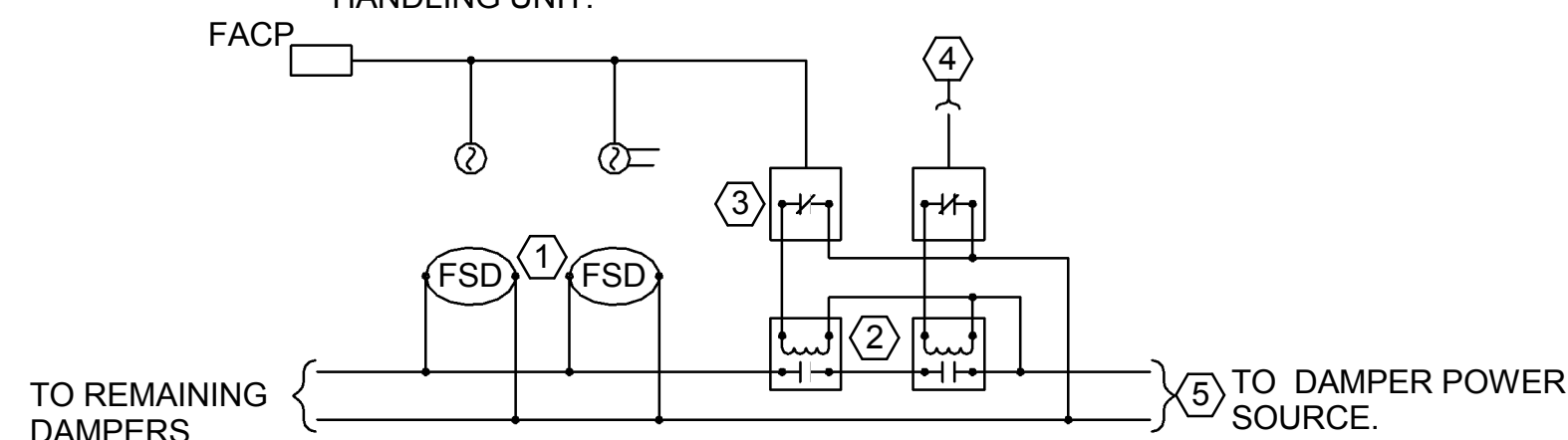
- AIR HANDLING UNIT (AHU) STARTER/VFD.
- FIRE ALARM ADDRESSABLE RELAY. CONNECT TO EMERGENCY STOP INPUT ON FAN CONTROLLER. PROGRAM TO STOP FAN ON ACTIVATION OF ASSOCIATED SMOKE DETECTION. PROVIDE RELAY FOR EACH FAN CONTROLLER.
- FIRE ALARM ADDRESSABLE DUCT SMOKE DETECTOR.
- FIRE ALARM ADDRESSABLE RELAY. DIGITAL INPUT TO BAS TO INITIATE ADDITIONAL AHU SHUT DOWN SEQUENCE.
- BAS CONNECTION TO FAN UNIT CONTROLLER.



1 HVAC FAN SHUT DOWN DIAGRAM
NO SCALE

DETAIL 2 KEYNOTES

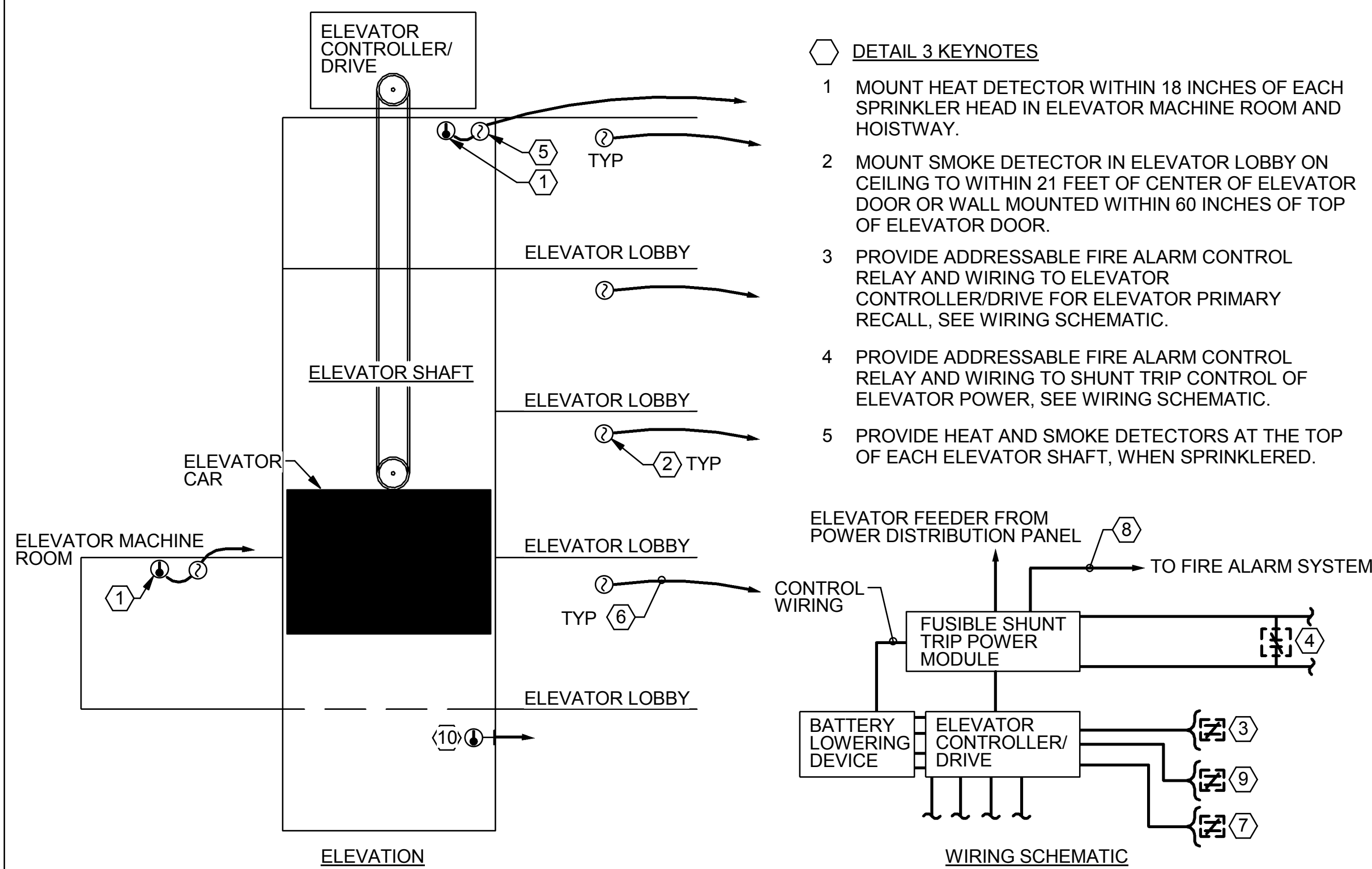
- FIRE/SMOKE DAMPER OR SMOKE DAMPER ASSEMBLY.
- PROVIDE RELAY TO INTERRUPT FIRE/SMOKE DAMPER CIRCUIT UPON SIGNAL FROM FIRE ALARM SYSTEM OR BUILDING AUTOMATION SYSTEM. COORDINATE WITH HVAC CONTROLS FOR ANY REQUIRED DELAY TO PREVENT DAMAGE TO DUCTWORK.
- FIRE ALARM ADDRESSABLE RELAY. PROGRAM TO OPEN CIRCUIT AND CLOSE DAMPERS UPON ACTIVATION OF SMOKE DETECTION SYSTEM.
- DIGITAL OUTPUT FROM BUILDING AUTOMATION SYSTEM TO CONTROL RELAY.
- PROVIDE SEPARATE CIRCUIT FOR EACH AIR HANDLING UNIT.



2 PASSIVE FIRE/SMOKE DAMPER CONTROL DIAGRAM
NO SCALE

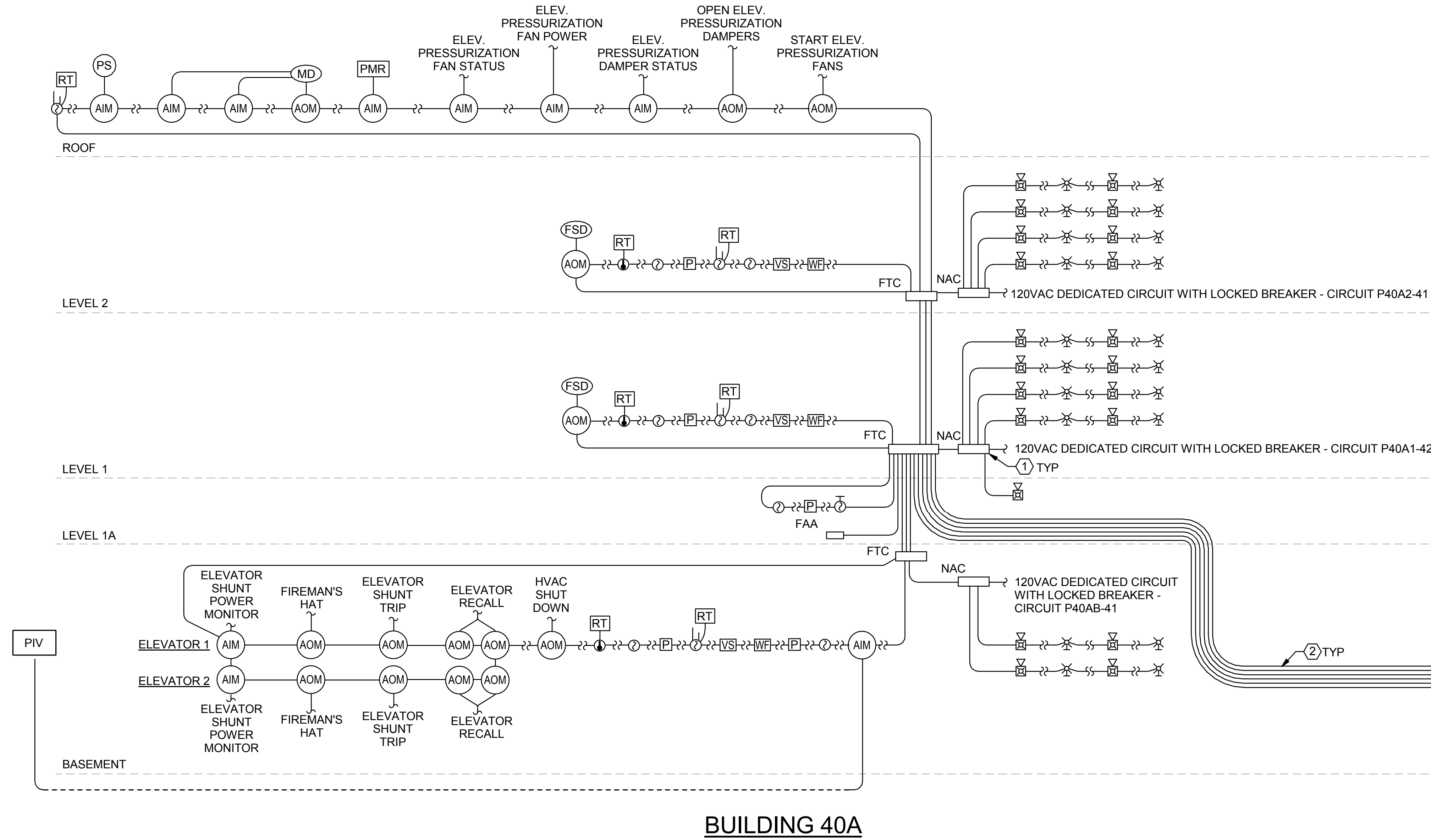
DETAIL 3 KEYNOTES

- MOUNT HEAT DETECTOR WITHIN 18 INCHES OF EACH SPRINKLER HEAD IN ELEVATOR MACHINE ROOM AND HOISTWAY.
- MOUNT SMOKE DETECTOR IN ELEVATOR LOBBY ON CEILING TO WITHIN 21 FEET OF CENTER OF ELEVATOR DOOR OR WALL MOUNTED WITHIN 60 INCHES OF TOP OF ELEVATOR DOOR.
- PROVIDE ADDRESSABLE FIRE ALARM CONTROL RELAY AND WIRING TO ELEVATOR CONTROLLER/DRIVE FOR ELEVATOR PRIMARY RECALL. SEE WIRING SCHEMATIC.
- PROVIDE ADDRESSABLE FIRE ALARM CONTROL RELAY AND WIRING TO SHUNT TRIP CONTROL OF ELEVATOR POWER, SEE WIRING SCHEMATIC.
- PROVIDE HEAT AND SMOKE DETECTORS AT THE TOP OF EACH ELEVATOR SHAFT, WHEN SPRINKLERED.



3 ELEVATOR DETAIL
NO SCALE

4 FIRE ALARM TYPICAL RISER DIAGRAM
NO SCALE



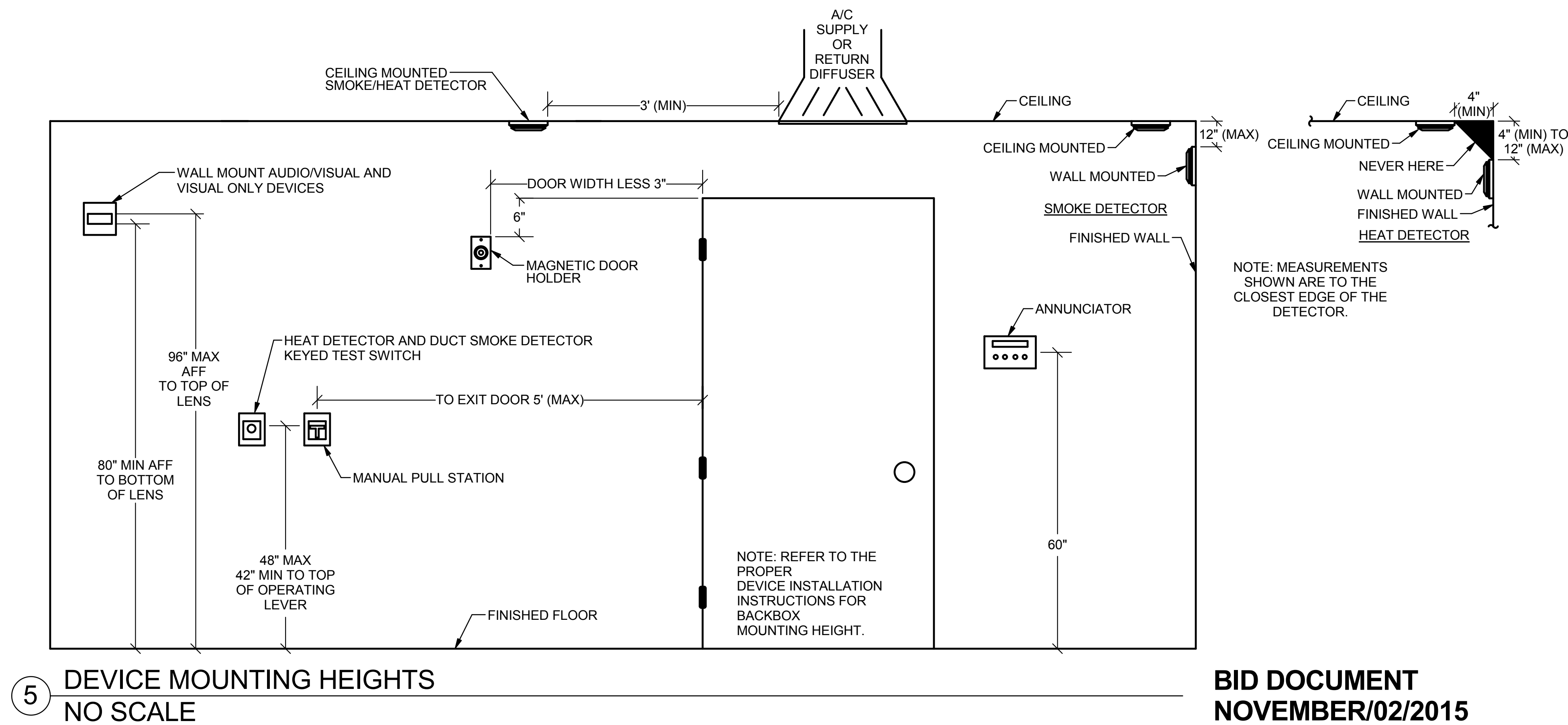
DETAIL 4 GENERAL NOTES

- DEVICES AND APPLIANCES ARE TYPICAL. SEE PLANS FOR LOCATIONS AND QUANTITIES.
- PROVIDE SEPARATE SLC FOR EACH LEVEL.

DETAIL 4 KEYNOTES

- PROVIDE QUANTITY OF POWER SUPPLIES REQUIRED FOR COMPLETE SYSTEM OPERATION.
- CLASS A SIGNALING LINE CIRCUITS.

- CONNECT TO FIRE ALARM SYSTEM SIGNALING LINE CIRCUIT.
- PROVIDE ADDRESSABLE FIRE ALARM CONTROL RELAY AND WIRING TO ELEVATOR CONTROLLER TO ACTIVATE FIREMAN'S HAT LIGHT IN ELEVATOR CAB UPON INITIATION OF SMOKE DETECTION IN ELEVATOR SHAFT OR MACHINE ROOM.
- CONNECT TO FIRE ALARM SYSTEM FOR MONITORING OF CONTROL POWER.
- PROVIDE ADDRESSABLE FIRE ALARM CONTROL RELAY AND WIRING TO ELEVATOR CONTROLLER FOR ELEVATOR ALTERNATE RECALL. SEE WIRING SCHEMATIC.
- INSTALL HEAT DETECTOR ADJACENT TO FIRE SPRINKLER IN PIT. DETECTOR TO INITIATE ELEVATOR RECALL.



5 DEVICE MOUNTING HEIGHTS
NO SCALE

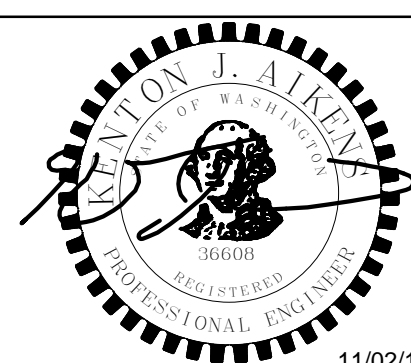
BID DOCUMENT
NOVEMBER/02/2015

Revisions	ISSUES	Date

CONSULTANTS:

PROJECT 2013-0512
CONTACT Kenton Alkens
INTERFACE ENGINEERING
100 SW Main Street
Suite 1600
Portland, OR 97204
TEL 503.382.2266
FAX 503.382.2262
www.interfaceengineering.com

ARCHITECT/ENGINEERS:



KMA ARCHITECTS
14410 SE Petrovitsky Rd. Suite 206
Renton, WA 98058
425-291-7078

Drawing Title
FIRE PROTECTION DETAILS

Approved: Project Director
Approver

Project Title
INTENSIVE OUTPATIENT MENTAL HEALTH AND EDUCATION BUILDING
SPOKANE VA MEDICAL CENTER
SPOKANE, WASHINGTON 99205

Location
SPOKANE, WASHINGTON 99205

Issue Date
11/02/2015

Checked
KJA

Drawn
JBM

Drawing Number
FA501

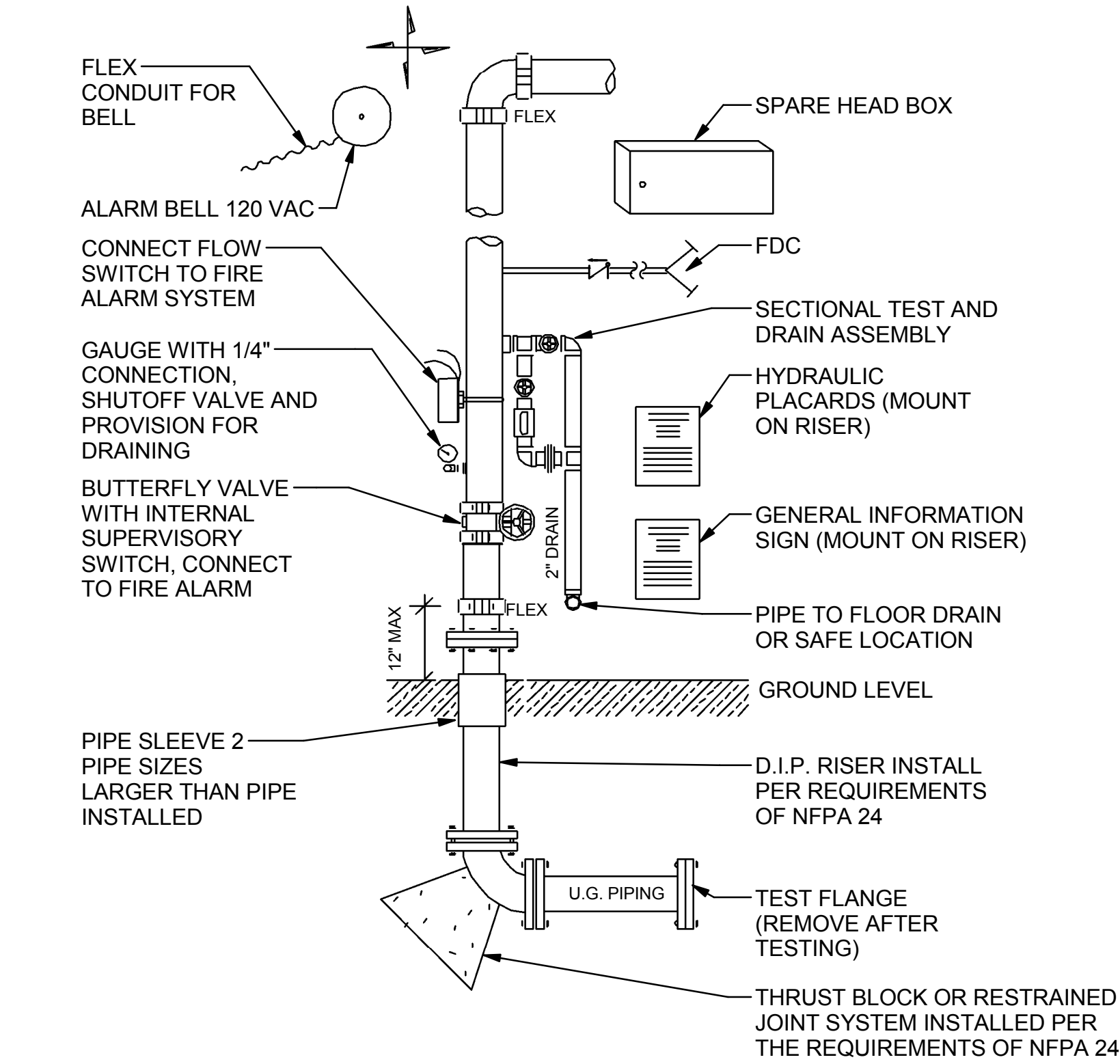
Dwg. of

Project Number
668-313
Building Number
40A

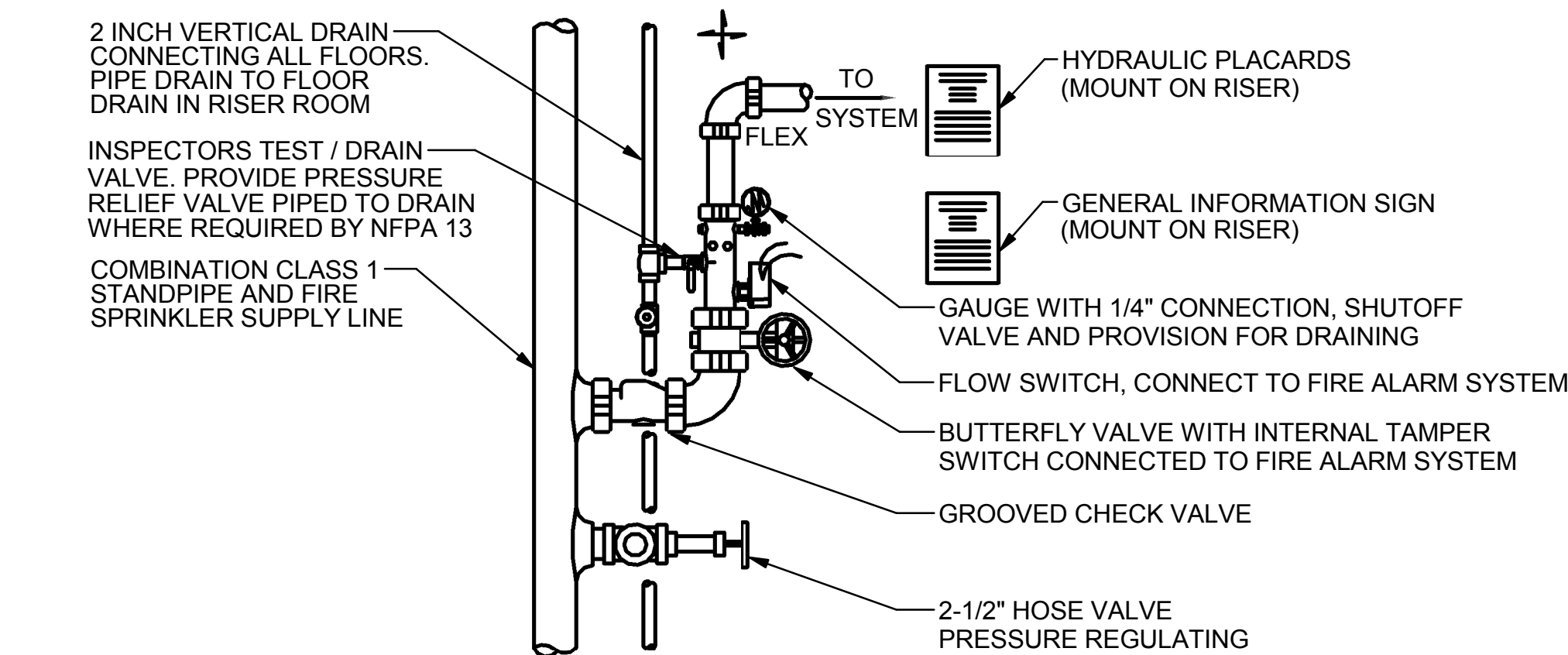
Office of
Construction
and Facilities
Management



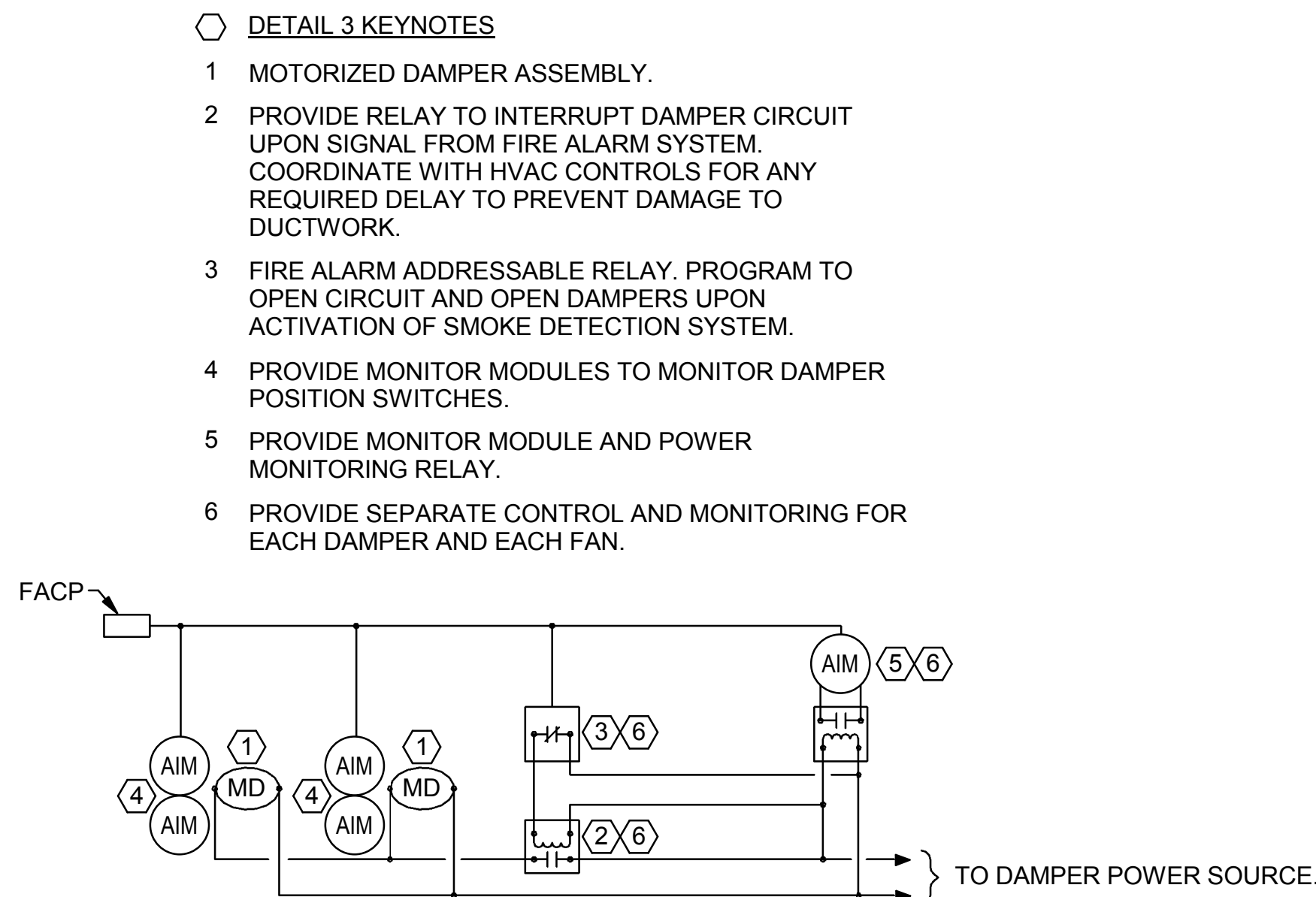
one eighth inch = one foot
one quarter inch = one foot
three eighths inch = one foot
three half inch = one foot
four inch = one foot
one inch = one foot
one inch = one foot
one and one half inches = one foot
three inches = one foot
6"



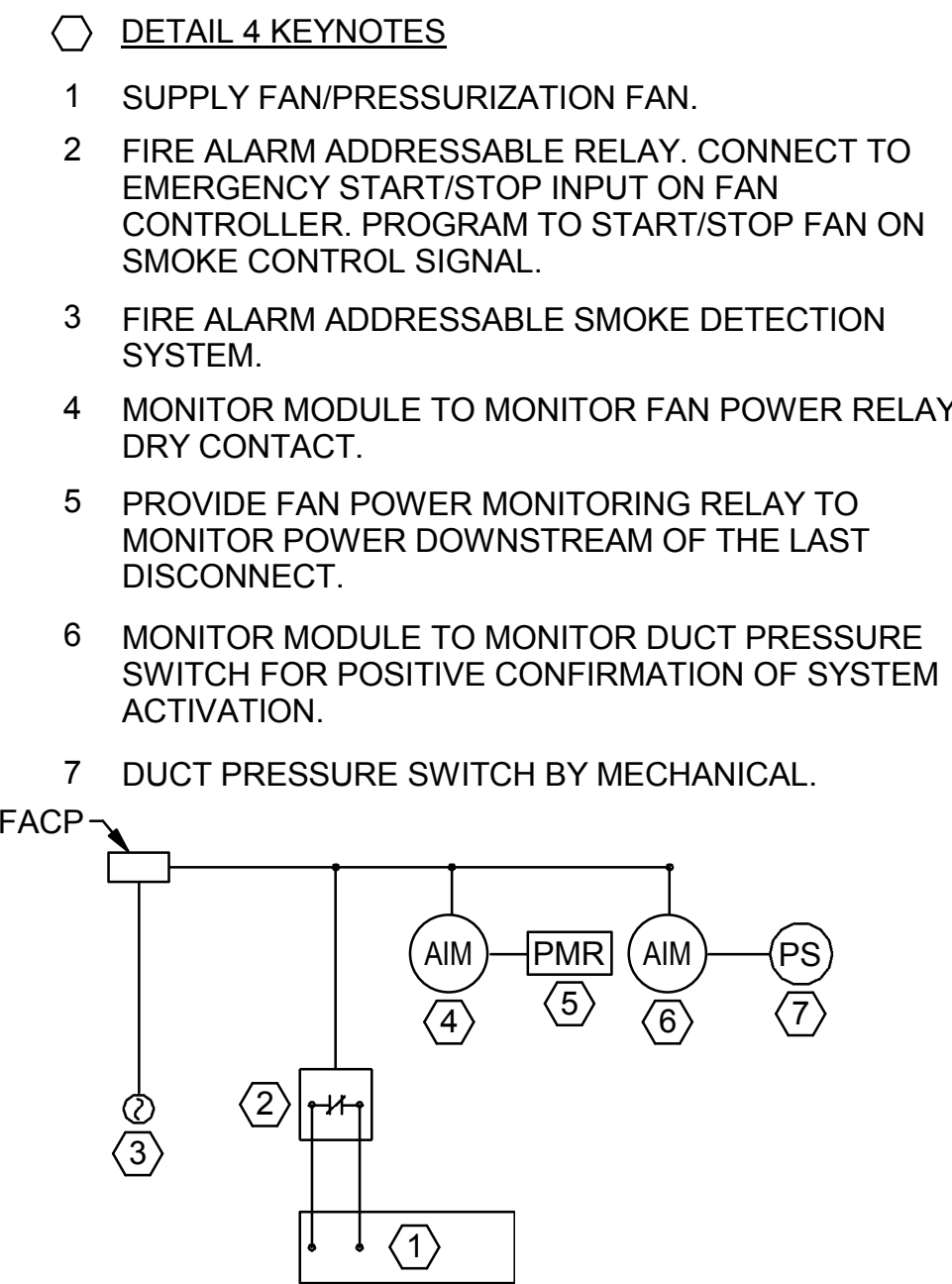
1 WET SPRINKLER RISER
NO SCALE



2 FLOOR CONTROL STATION
NO SCALE



3 SMOKE CONTROL - PRESSURIZATION SYSTEM
DAMPER SMOKE CONTROL DIAGRAM
NO SCALE



4 SMOKE CONTROL SYSTEM - PRESSURIZATION
FAN CONTROL DIAGRAM
NO SCALE

	BID DOCUMENT	11/02/2015
	100% CONSTRUCTION DOCUMENT	1/26/2015
		12/30/14
	99% CONSTRUCTION DOCUMENT	12/17/14
	95% CONSTRUCTION DOCUMENT	10/13/14
	65% DESIGN DEVELOPMENT	6/27/14
	SCHEMATIC DESIGN	3/28/14
Revisions	ISSUES	Date

CONSULTANTS:

PROJECT 2013-0512
CONTACT Kenton Alkens

INTERFACE
ENGINEERING

100 SW Main Street
Suite 1600
Portland, OR 97204
TEL 503.382.2266
FAX 503.382.2262
www.interfaceengineering.com

ARCHITECT/ENGINEERS:

KMA
ARCHITECTS

14410 SE Petrovitsky Rd. Suite 206
Renton, WA 98058
425-291-7078

Drawing Title FIRE PROTECTION DETAILS	Project Title INTENSIVE OUTPATIENT MENTAL HEALTH AND EDUCATION BUILDING SPOKANE VA MEDICAL CENTER SPOKANE, WASHINGTON 99205	Project Number 668-313 Building Number 40A
Approved: Project Director Approver	Location SPOKANE, WASHINGTON 99205	Drawing Number FA502 Dwg. of
	Issue Date 11/02/2015	Checked Checker Drawn Author

Office of
Construction
and Facilities
Management

Department of
Veterans Affairs