

SITE PLAN - ACCESS ROADS

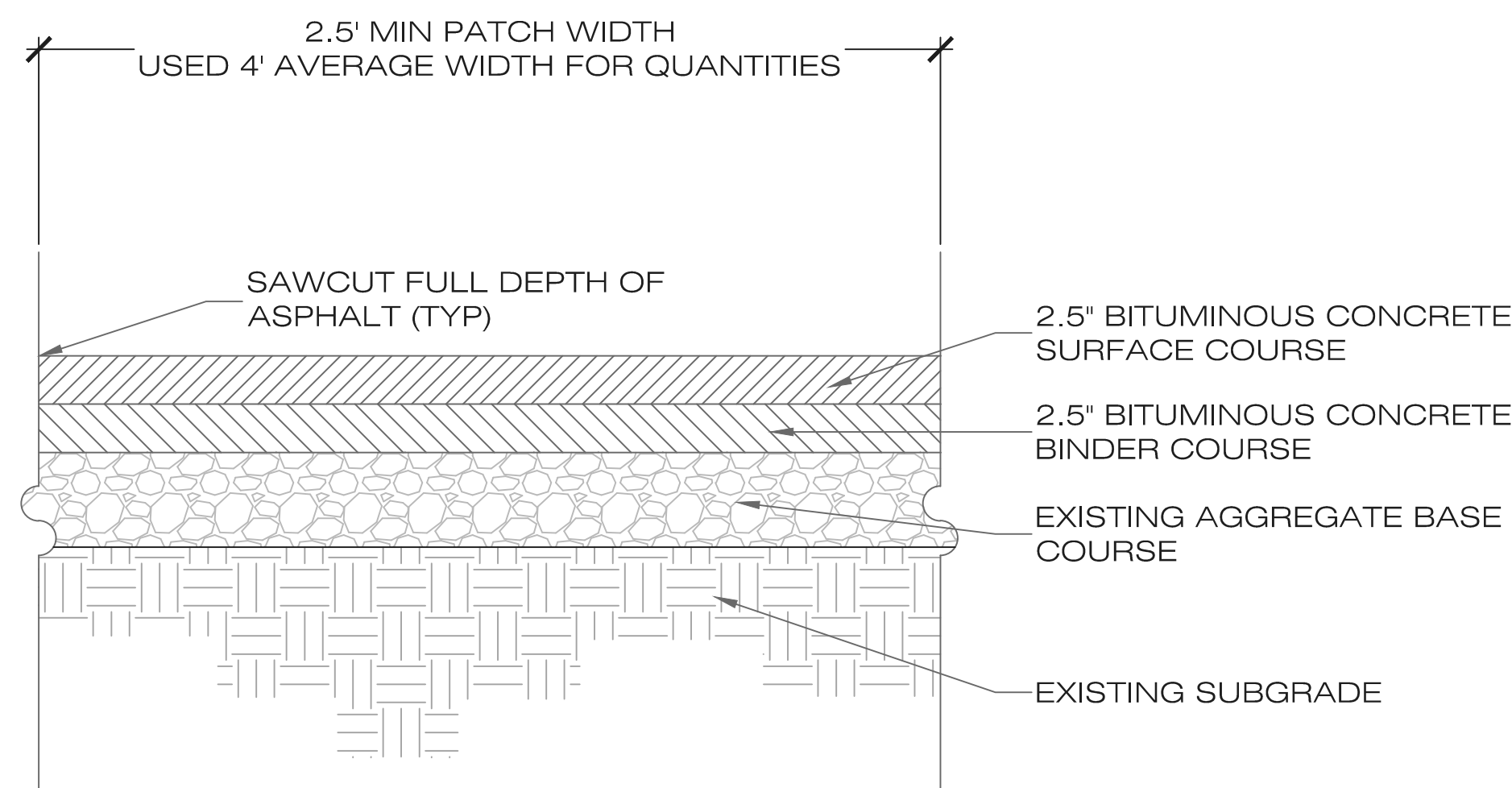
NOT TO SCALE

PAVEMENT SEAM/CRACK REPAIR TABLE	
SEAM/CRACK NO.	SEAM/CRACK LENGTH (FEET)
1	10
2	10
3	10
4	10
5	10
6	10
7	10
8	10
9	10
10	10
11	13
12	10
13	10
14	22
15	30
16	19
17	30
18	10
19	10
20	107
21	27
22	61
23	87
24	16
25	16
26	101
27	16
28	16
29	16
30	72
31	16
32	58
33	16
34	16
35	48
36	16
37	16
38	54
39	16
40	16
41	16
42	16
43	41
44	16
45	16
46	19
47	16
48	16
49	55
50	16
51	16
52	16
TOTAL	1320

PATCH QUANTITY: 1320' X 4' AVG WIDTH
= 5280 S.F. = 587 S.Y.

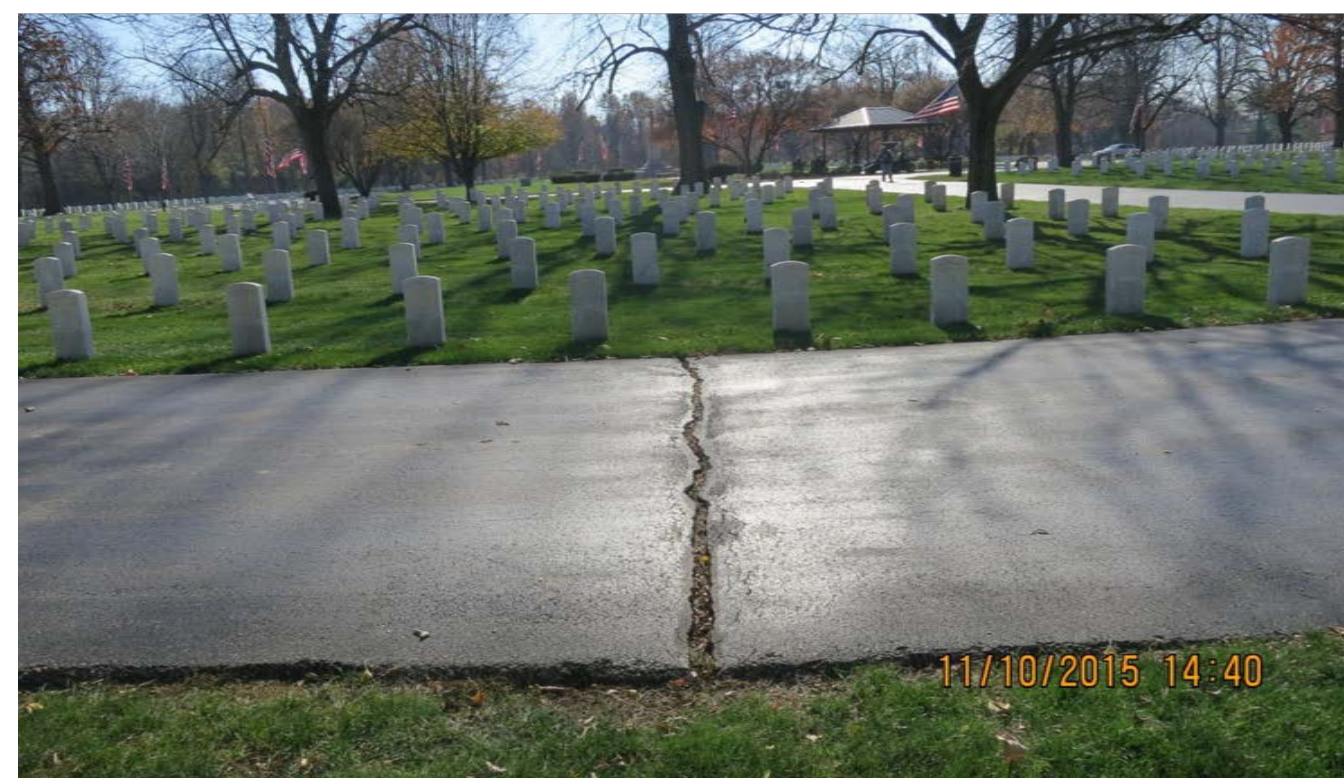
NOTES:

- THIS PORTION OF THE PROJECT CONSISTS OF REPAIRING/PATCHING THE SEAMS OR CRACKS THAT HAVE FORMED IN THE ASPHALT PAVEMENT, TYPICALLY THE WIDTH OF THE ROAD, AS IDENTIFIED IN THE DESIGNATED LOCATIONS IN THE ADJACENT PLAN VIEW. THE ASPHALT PATCH SHALL CONSIST OF SAWCUTTING (FULL DEPTH OF ASPHALT-APPROX 4" TO 5") THE PAVEMENT FOR A MINIMUM PATCH WIDTH OF 2.5- FEET (4-FOOT AVERAGE WIDTH WAS USED TO DETERMINE QUANTITIES), REMOVE 5" OF MATERIAL (BITUMINOUS & AGGREGATE) AND PROPERLY DISPOSE FROM GOVERNMENT PROPERTY, PROVIDE COMPACTION OF EXISTING STONE BASE MATERIAL AND APPLY TACK COAT UNIFORMLY TO VERTICAL AND HORIZONTAL SURFACES ABUTTING AREA TO RECEIVE NEW ASPHALT AT A RATE OF 0.15 GAL/S.Y. REPLACE REMOVED MATERIAL WITH 2.5" OF BITUMINOUS BINDER COURSE (IDOT) & 2.5" OF BITUMINOUS SURFACE COURSE (IDOT) IN ACCORDANCE WITH SPECIFICATION REQUIREMENTS. THE ASPHALT PATCH QUANTITIES ARE CALCULATED TO BE 587 S.Y. BASED ON AN AVERAGE PATCH WIDTH OF 4- FEET.
- MATCH NEW ASPHALT SURFACE TO THE ADJOINING EXISTING ASPHALT SURFACES EVENLY AND NEATLY IN STRAIGHT LINES. AS MENTIONED ABOVE, THIS WILL REQUIRE SAWCUTTING THE EXISTING ASPHALT TO MAKE A SMOOTH EVEN EDGE. THE FINAL SURFACE ELEVATIONS OF THE NEW AND OLD PAVEMENTS SHALL EVENLY BUTT AND SLOPE INTO EXISTING SURFACES.
- AREAS OUTSIDE THE PATCHING AREA, I.E. LAWNS, SHOULDER, CURB & GUTTER, SIDEWALK, ETC., SHALL BE RESTORED TO IT'S ORIGINAL CONDITION UPON COMPLETION OF THE PROJECT (INCIDENTAL TO THE PROJECT).
- WORK ITEMS SHALL BE ACCOMPLISHED IN PHASES AS AGREED TO BY THE CEMETERY SO AS TO MAINTAIN TRAFFIC FLOW ON THE STATION. THE CONTRACTOR SHALL PROVIDE CONSTRUCTION SIGNAGE AND CONES AT THE LIMITS OF THE PAVEMENT WORK AREAS SHOWING "DETOUR" AND POINTING VISITORS AROUND THE CONSTRUCTION ZONE. CONTRACTOR SHALL STOP WORK DURING MEMORIAL SERVICES AT THE SITE. CONTRACTOR SHALL TAKE ALL PRECAUTIONS TO AVOID DISTURBING MEMORIAL SERVICES AND VISITORS. THE CONTRACTOR SHALL COORDINATE ALL ACTIVITIES WITH THE CEMETERY DIRECTOR.



ASPHALT PATCH

NOT TO SCALE



EXAMPLE OF A PAVEMENT SEAM TO BE REPAIRED/PATCHED



EXAMPLE OF A PAVEMENT CRACKS TO BE REPAIRED/PATCHED



EXAMPLE OF A PAVEMENT SEAM BUTTING CONCRETE TO BE REPAIRED/PATCHED
(CONCRETE TO REMAIN UNTOUCHED)

FINAL FOR CONSTRUCTION
December 10, 2015



NATIONAL
CEMETERY
ADMINISTRATION

Drawing Title SITE PLAN - ACCESS ROADS		Project Title PAVEMENT PATCH & BRICK HEADWALL REPAIR		Date 12/10/2015
Approved: Division Chief		Building Number *****		Project No. 809-16-102
Approved: Service Director		Location DANVILLE NATIONAL CEMETERY		DRAWING NO. L-1
				Dwg. 3 Of 3