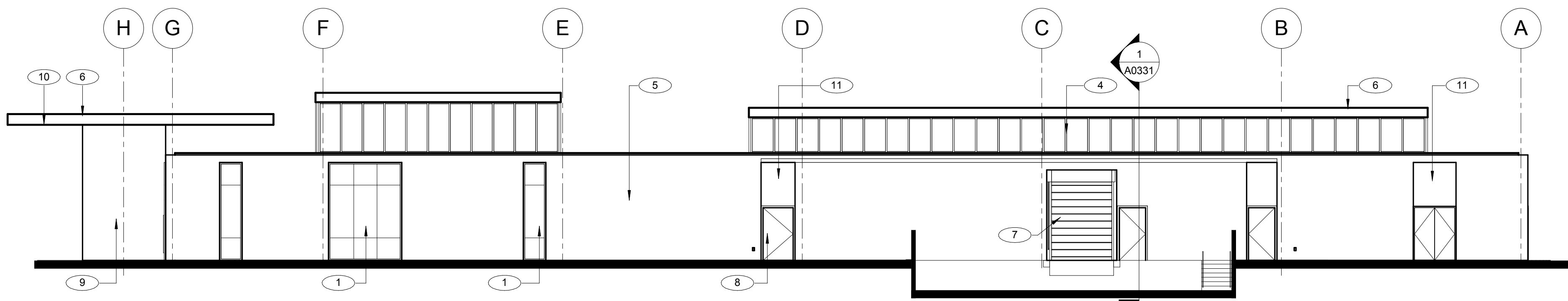
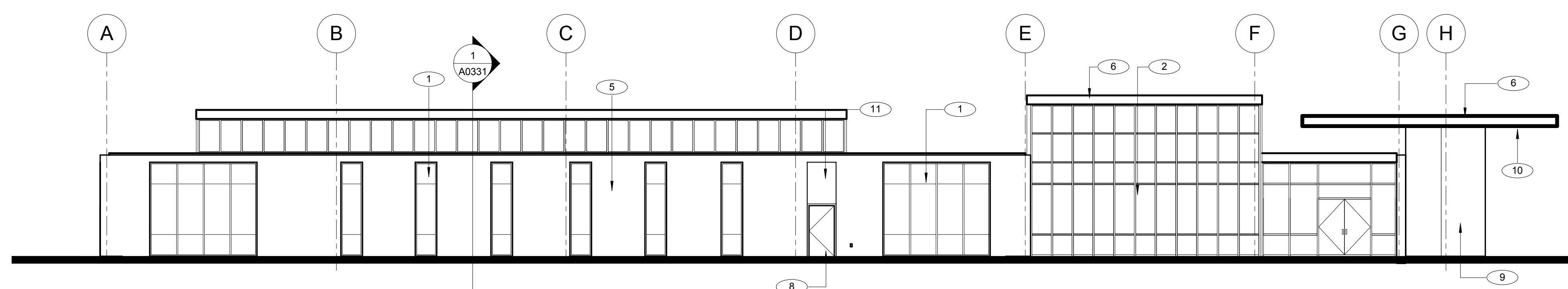


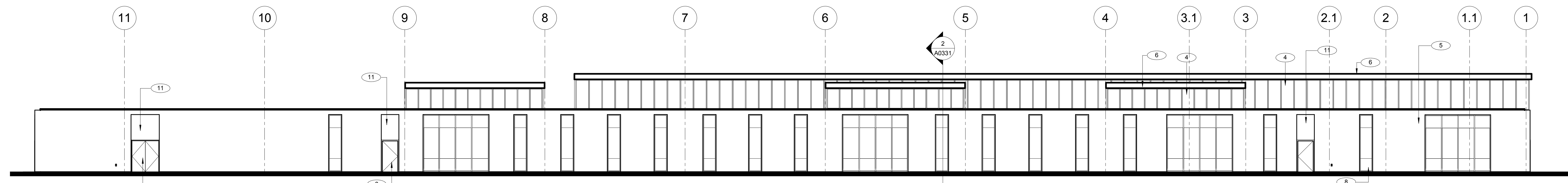
three inches = one foot
one and one half inches = one foot
one inch = one foot
three quarters inch = one foot
one half inch = one foot
three eighths inch = one foot
one quarter inch = one foot
one eighth inch = one foot



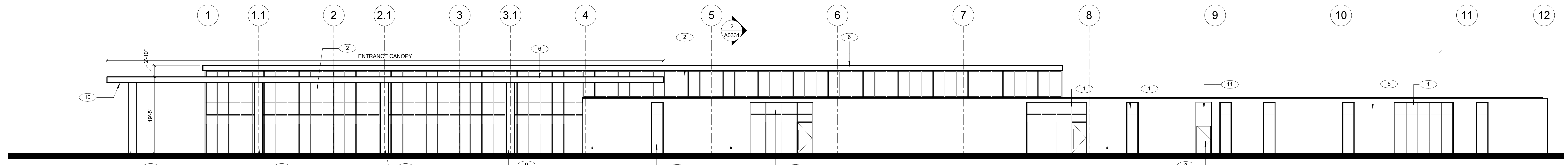
SIDE ELEVATION



SIDE ELEVATION



REAR ELEVATION



ENTRY ELEVATION

GENERAL NOTES

1. COORDINATE ALL BUILDING ENTRIES WITH SITE GRADE.
2. COORDINATE ALL WINDOW MULLIONS W/ FINALIZED WALL LOCATIONS AT CENTERLINE OF WALL TO CENTERLINE OF MULLION.
3. COORDINATE EXTERIOR MATERIALS TO MEET VA EXTERIOR REQUIREMENTS. REFERENCE STANDARDS IN THE SFO.
4. COORDINATE UTILITIES WITH MECHANICAL, PLUMBING AND ELECTRICAL ROOMS.
5. TO MEET THE DAYLIGHTING AND ENERGY GOALS FOR THE PROJECT, EXTERIOR SUN CONTROL DEVICES MAY BE REQUIRED AT WINDOW OPENINGS DEPENDING ON THE ORIENTATION OF THE BUILDING. THE DESIGN OF THESE DEVICES SHALL BE INTEGRATED WITH THE DESIGN OF THE WINDOW SYSTEMS AND MEET ALL PHYSICAL SECURITY DESIGN REQUIREMENTS.

KEYED ELEVATIONS AND SECTION NOTES

- 1 PAINTED ALUMINUM CURTAINWALL WITH CLEAR, LOW-E INSULATED GLAZING UNITS. GLASS TO BE VERTICAL CAPTURED MULLIONS & HORIZONTAL TO BE STRUCTURAL GLAZED JOINTS (WHERE OCCURS).
- 2 PAINTED ALUMINUM STOREFRONT SYSTEM WITH CLEAR, LOW-E INSULATED GLAZING UNITS.
- 3 PAINTED ALUMINUM STOREFRONT ENTRANCE DOORS WITH CLEAR, LOW-E INSULATED GLAZING UNITS.
- 4 PAINTED ALUMINUM STOREFRONT CLERESTORY WITH CLEAR LOW-E INSULATED GLAZING UNITS.
- 5 4" THICK REGIONAL LIMESTONE OVER STL. STUD BACKER WALL.
- 6 COMPOSITE ALUMINUM FASCIA/ COPING.
- 7 PAINTED ROLL-UP OVERHEAD DOOR.
- 8 PAINTED INSULATED H.M. DOOR & FRAME.
- 9 PREFINISHED METAL COLUMN COVER.
- 10 LINEAR WOOD PANEL SOFFIT.
- 11 COMPOSITE ALUMINUM PANEL SYSTEM.

<div>Revisions:</div> <table><tr><td> </td><td> </td></tr><tr><td> </td><td> </td></tr><tr><td> </td><td> </td></tr><tr><td> </td><td> </td></tr><tr><td> </td><td> </td></tr></table>											<div>CONSULTANTS:</div> <div>The LA Group</div> <div>40 Long Alley</div> <div>Saratoga Springs, NY 12866</div> <div>P: 518.587.8100</div> <div>www.thelagroup.com</div>	<div>ARCHITECT/ENGINEERS:</div> <div>CANNONDESIGN</div> <div>1100 Clark Avenue</div> <div>St. Louis, Missouri 63102</div> <div>T: 314.241.6250</div> <div>F: 314.241.2570</div> <div>© CannonDesign 2015</div> <div>All rights reserved. No part of this document may be reproduced or utilized in any form, without prior written authorization by the Cannon Corporation</div>	<div>Drawing Title</div> <div>EXTERIOR ELEVATIONS</div> <div>SCALE: 3/32" = 1'-0"</div> <div>Approved: Project Director</div>	<div>Project Title</div> <div>VA OUTPATIENT CLINIC</div> <div>Location</div> <div>TYLER, TX</div> <div>Date</div> <div>DEC 16, 2015</div> <div>Checked</div> <div>SDM</div> <div>Drawn</div> <div>HRS</div>	<div>Project Number</div> <div>CANNON DESIGN PROJECT NO. 3640.46</div> <div>Building Number</div> <div> </div> <div>Drawing Number</div> <div>A0301</div> <div>Dwg. 11 of 14</div>	<div>NOT FOR CONSTRUCTION</div> <div>Office of Construction and Facilities Management</div> <div>Department of Veterans Affairs</div>