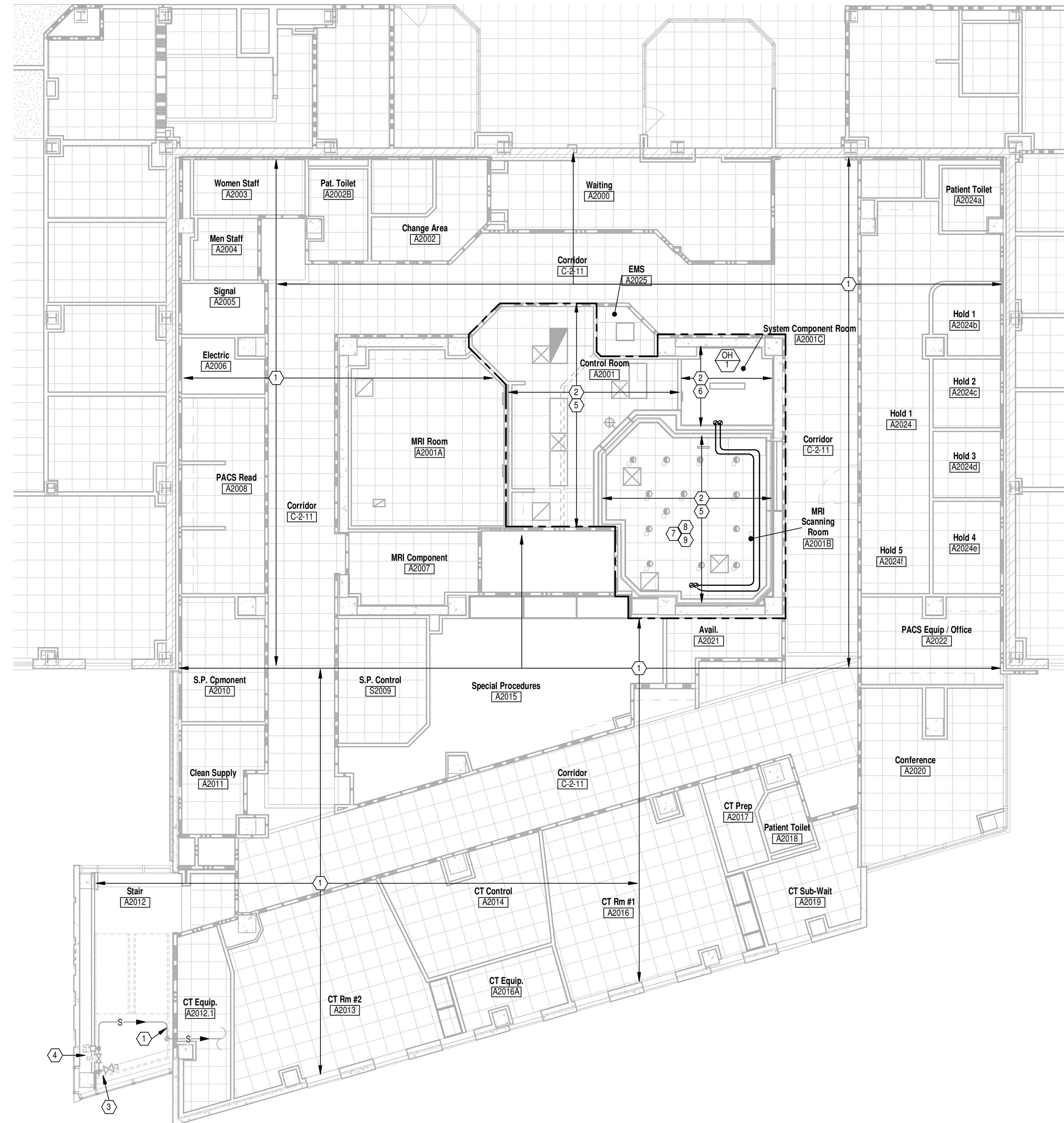


- 1 EXISTING TO REMAIN.
- 2
- 3 MODIFY EXISTING FIRE SUPPRESSION SPRINKLER SYSTEM TO CONFORM TO NEW
4 LAULOV (SIZED PER HYDRAULIC CALCULATIONS).
- 5
- 6 EXISTING 6" STANDPIPE WITH 2.5" FDI TO REMAIN.
- 7
- 8 EXISTING FLOOR CONTROL VALVE WITH TAMPER AND FLOW SWITCH AND TEST AND
9 DRAIN TO REMAIN.
- 10
- 11 NEW ACoustICAL CEILING TILE CEILING. REFER TO ARCHITECTURAL REFLECTED
12 CEILING PLAN FOR ELEVATION.
- 13
- 14 OPEN TO STRUCTURE.
- 15
- 16 COORDINATE SPRINKLER LOCATIONS WITH MRI EQUIPMENT'S STRUCTURAL MEMBERS.
17 REFER TO MRI MANUFACTURER'S DRAWINGS.
- 18
- 19 PROVIDE COPPER FIRE SUPPRESSION SPRINKLER PIPING IN MRI. ONLY NONFERROUS
20 MATERIAL FOR PIPING AND HANGERS ARE ALLOWED IN MRI.
- 21
- 22 RF WAVEGUIDE FOR PENETRATION THROUGH RF SHIELDING. RF WAVEGUIDES AND
23 FILTERS SHAL BE FURNISHED AND INSTALLED BY RF SHIELDING SUPPLIER. REFER TO
24 MRI MANUFACTURER'S DRAWINGS FOR LOCATION AND ADDITIONAL INFORMATION.



 PARTIAL SECOND FLOOR PLAN
Scale: 1/8" = 1'-0"

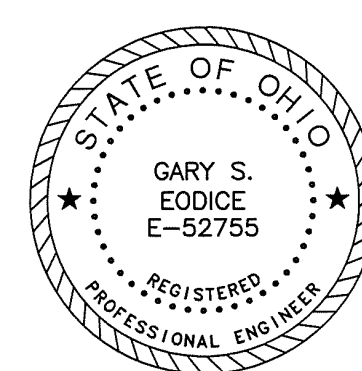
[illegible]

 **Heapy Engineering**
MEP Design Technology Planning Commissioning Energy

Nationally Recognized Leader in Sustainability

1400 W Dorothy Lane, Dayton, OH 45409-1310
Ph 937-224-0861 Fax 937-224-5777 www.heapy.com

HEAPY PROJECT No.: 2015-04016 FIRM LICENSE No.: 01528H



pfb architects
Cincinnati • Chicago

PFB Architects, Inc.
9461 Kenwood Road
Cincinnati, Ohio 45242
(513) 861 3200

 Department of
Veterans Affairs