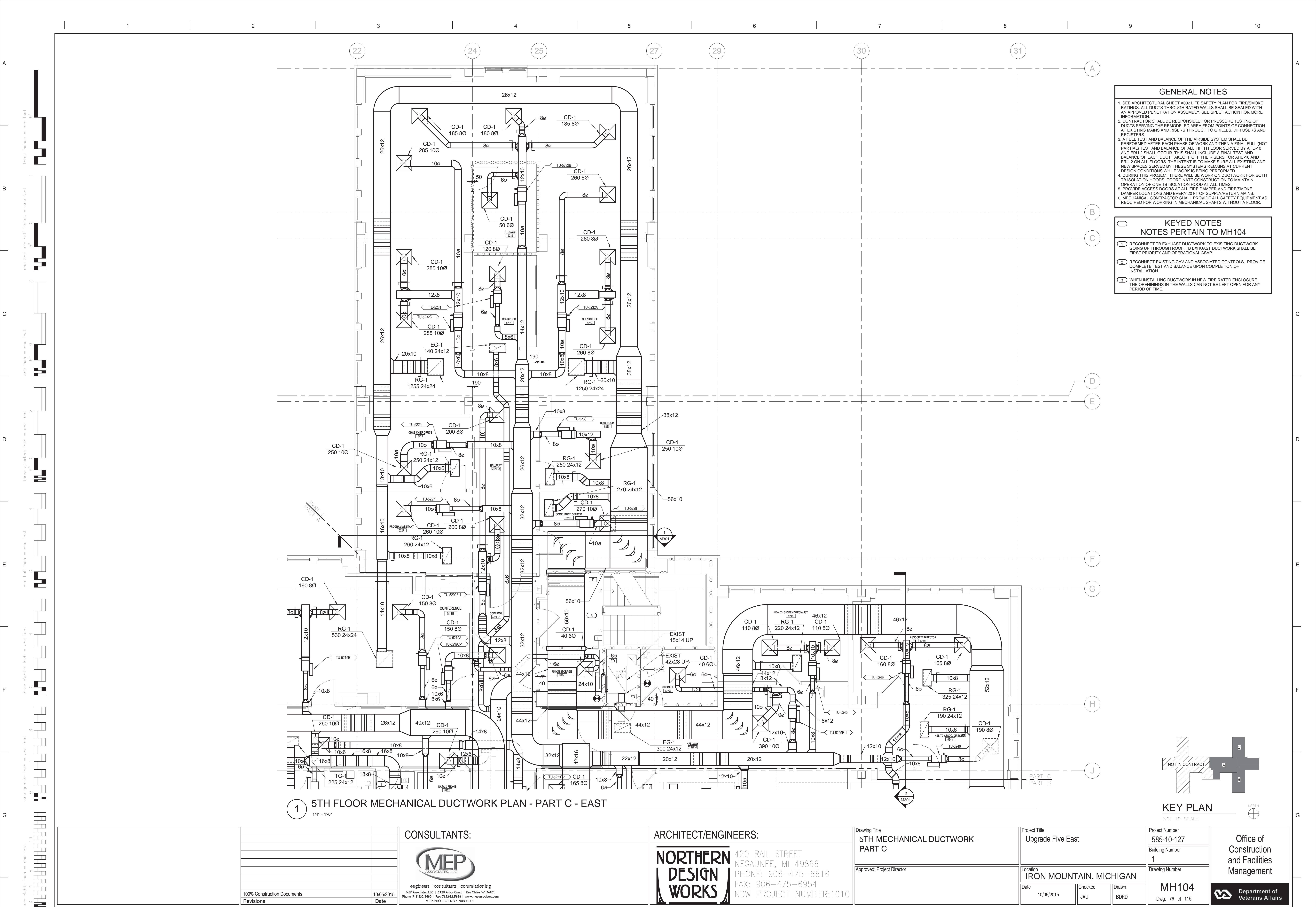
 Department of  
Veterans Affairs







three inches = one foot

one and one half inches = one foot

one inch = one foot

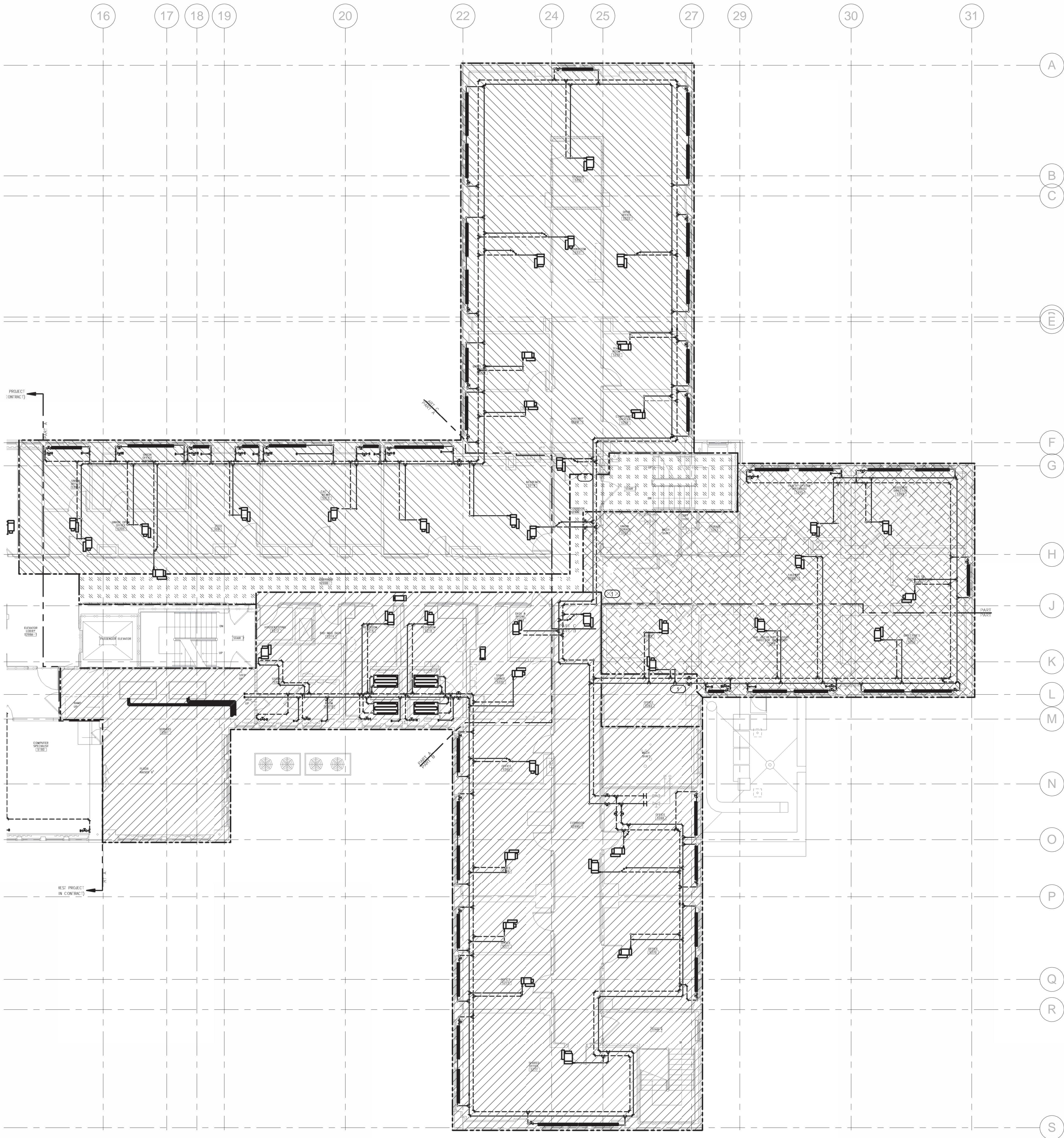
three quarters inch = one foot

one half inch = one foot

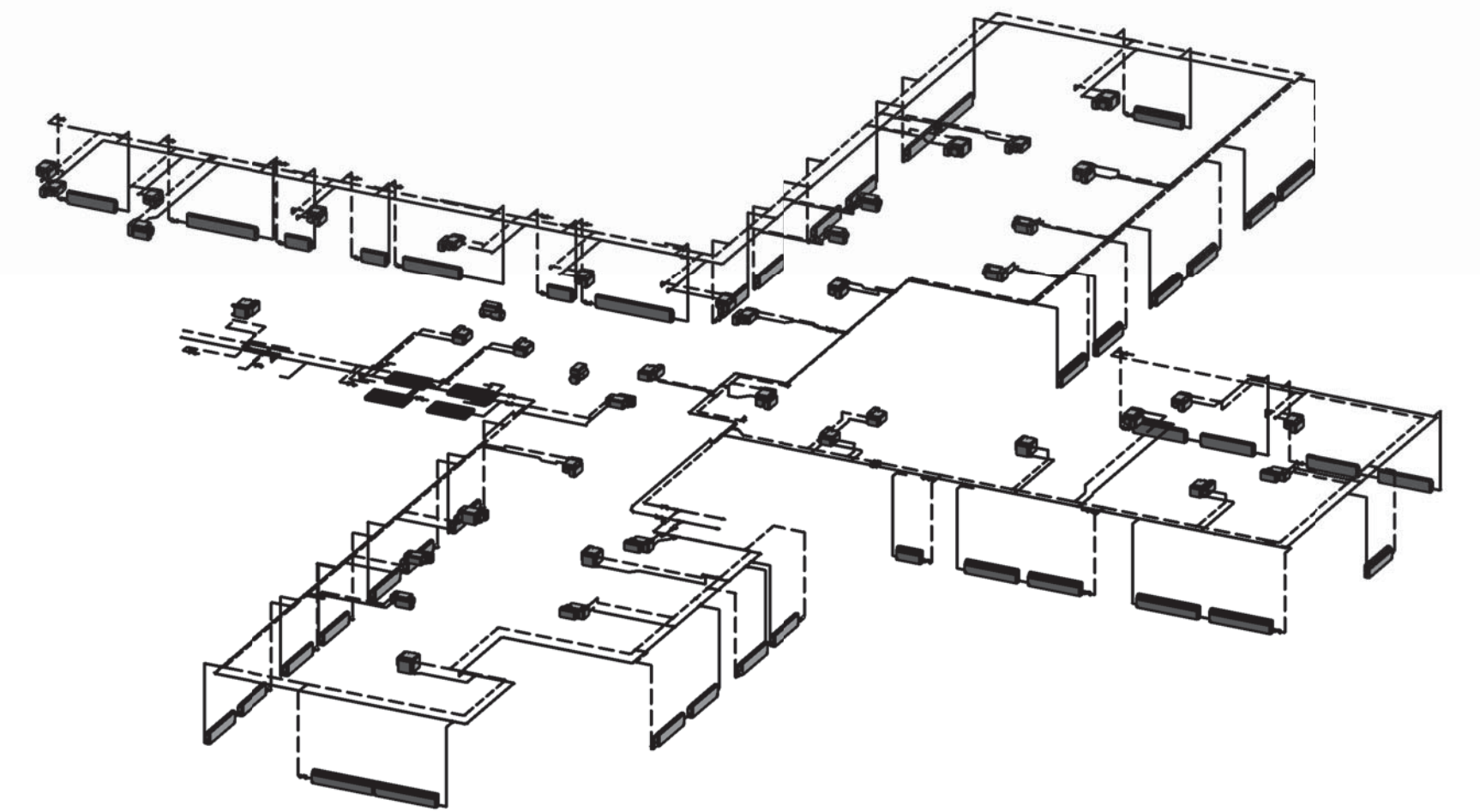
three eighths inch = one foot

one quarter inch = one foot

one eighth inch = one foot



1 5TH FLOOR MECHANICAL PIPING PLAN - OVERALL - EAST (FOR REFERENCE ONLY)  
1/8" = 1'-0"



2 3D MECHANICAL PIPING PLAN (FOR REFERENCE ONLY)

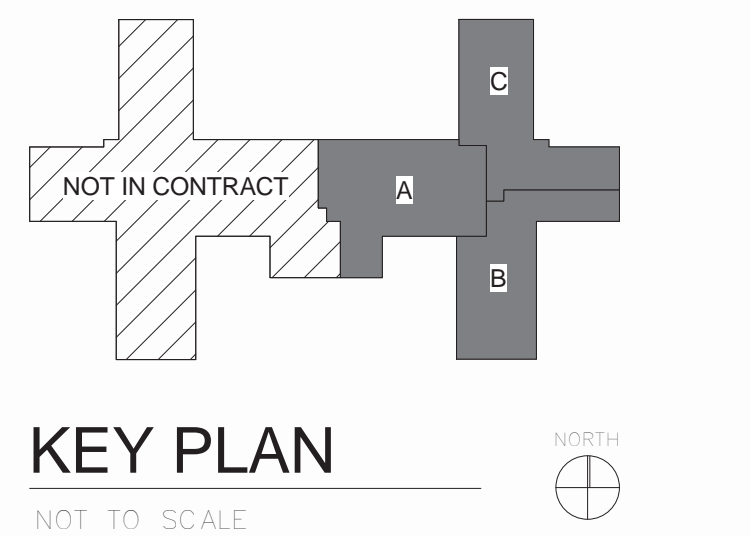
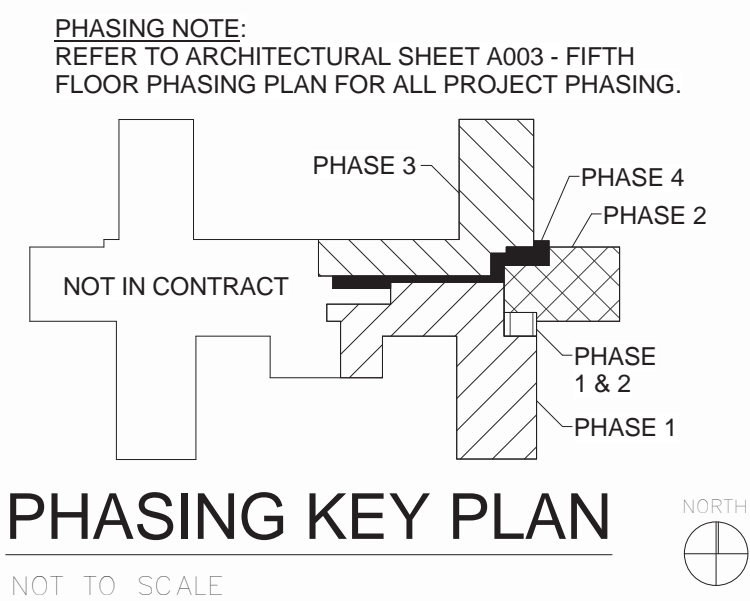
- PHASE 1 - THESE SPACES WILL BE AVAILABLE FOR CONSTRUCTION AT THE COMMENCEMENT OF THE PROJECT. DURING WORK IN THIS AREA THE REMAINDER OF THE FIFTH FLOOR WILL BE OCCUPIED. A 5 FOOT CORRIDOR WILL BE MAINTAINED TO THE NORTH AND EAST WINGS AS SHOWN.
- PHASE 2 - THESE SPACES WILL BE AVAILABLE FOR CONSTRUCTION AT THE END OF PHASE 1. DURING WORK IN THIS AREA THE REMAINDER OF THE FIFTH FLOOR WILL BE OCCUPIED.
- PHASE 3 - WORK IN PHASE 3 CAN BEGIN AFTER PHASE 2 IS COMPLETED. DURING THE WORK IN PHASE 3 THE REMAINDER OF THE FIFTH FLOOR WILL BE OCCUPIED. A 5 FOOT CORRIDOR WILL BE MAINTAINED TO THE SOUTH AND EAST WINGS AND STAIR 3 AS SHOWN.
- PHASE 4 - WORK IN PHASE 4 SHALL OCCUR THROUGHOUT THE PROJECT DURATION. WORK IN THIS AREA MUST BE COORDINATED WITH THE MEDICAL CENTER AND PERFORMED OUTSIDE OF MEDICAL CENTER BUSINESS HOURS. ELEVATOR, CORRIDOR AND STAIR ACCESS SHALL BE MAINTAINED AT ALL TIMES DURING MEDICAL CENTER BUSINESS HOURS.




**GENERAL NOTES**

- COORDINATE SYSTEM SHUTDOWN WITH OWNER AS REQUIRED FOR CONSTRUCTION.
- TEST & BALANCE CONTRACTOR IS REQUIRED TO BALANCE EACH PHASE PRIOR TO OCCUPANCY AND SPOT CHECK THE PREVIOUS PHASE FOR MAINTAINED FLOW RATES.

**KEYED NOTES**  
NOTES PERTAIN TO MH102

☐ MECHANICAL CONTRACTOR TO INSTALL SHUTOFF VALVES AND CAPS AT EACH PHASING BOUNDARY FOR ALL BRANCH HOT WATER PIPING AS REQUIRED FOR CONTINUED CONSTRUCTION AND HEATING.



			<div>CONSULTANTS:</div> <div><div>engineers   consultants   commissioning</div><div>MEP Associates, LLC   2720 Arbor Court   Eau Claire, WI 54701</div><div>Phone: 715.832.5680   Fax: 715.832.5668   <a href="http://www.mepassociates.com">www.mepassociates.com</a></div><div>MEP PROJECT NO.: N08.10.01</div></div>	<div>ARCHITECT/ENGINEERS:</div> <div><div></div><div>420 RAIL STREET NEGAUNEE, MI 49866 PHONE: 906-475-6616 FAX: 906-475-6954 NDW PROJECT NUMBER:1010</div></div>	<div>Drawing Title</div> <div>5TH MECHANICAL PIPING - OVERALL (FOR REFERENCE ONLY)</div>	<div>Project Title</div> <div>Upgrade Five East</div>	<div>Project Number</div> <div>585-10-127</div>	<div>Office of Construction and Facilities Management</div> <div> <div>Department of Veterans Affairs</div></div>	
					<div>Building Number</div> <div>1</div>	<div>Drawing Number</div> <div>MP101</div> <div>Dwg. 77 of 115</div>			
					<div>Approved: Project Director</div>	<div>Location</div> <div>IRON MOUNTAIN, MICHIGAN</div>			
						<div>Date</div> <div>10/05/2015</div>	<div>Checked</div> <div>JAU</div>		<div>Drawn</div> <div>BDRD</div>
	<div>100% Construction Documents</div> <div>Revisions:</div>	<div>10/05/2015</div> <div>Date</div>							





1	2	3	4	5	6	7	8	9	10
---	---	---	---	---	---	---	---	---	----

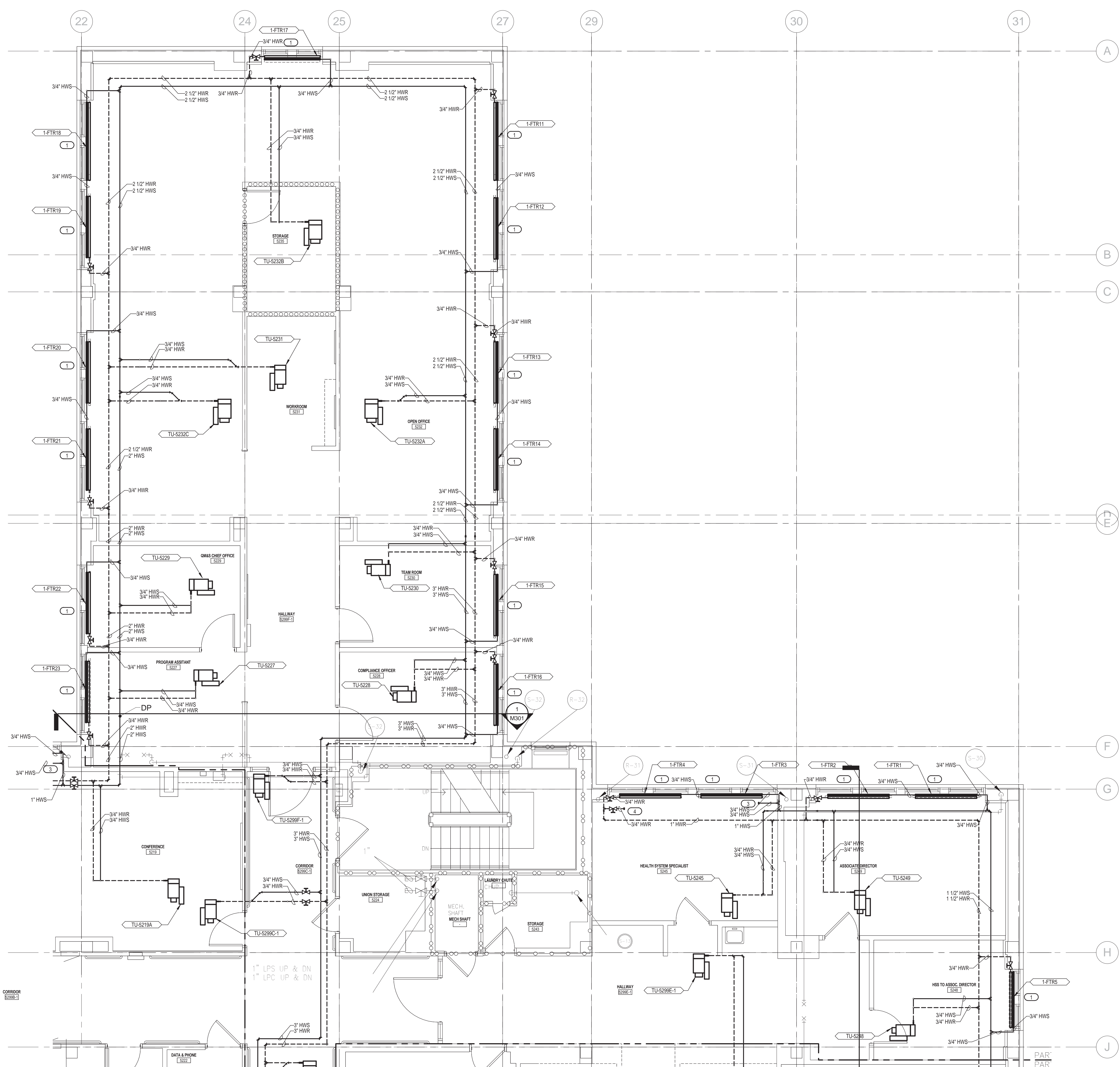






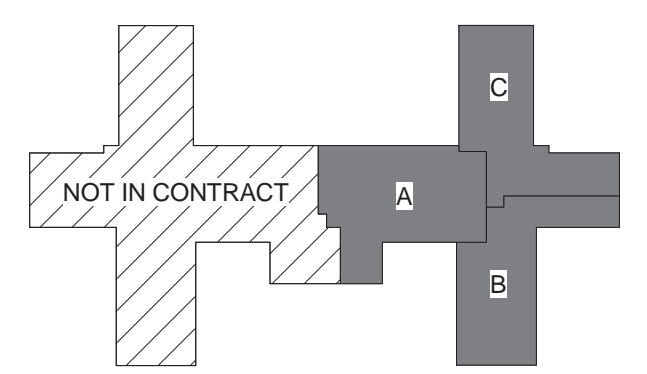
A  
B  
C  
D  
E  
F  
G

three inches = one foot  
one and one half inches = one foot  
one inch = one foot  
three quarters inch = one foot  
one half inch = one foot  
three eighths inch = one foot  
one quarter inch = one foot  
one eighth inch = one foot






- GENERAL NOTES**
1. SEE ARCHITECTURAL SHEET A002 LIFE SAFETY PLAN FOR FIRE/SMOKE RATINGS. ALL PIPES THROUGH RATED WALLS SHALL BE SEALED WITH AN APPROVED PENETRATION ASSEMBLY. SEE SPECIFICATION FOR MORE INFORMATION.
  2. A FULL TEST AND BALANCE OF THE WATERSIDE SYSTEM SHALL BE PERFORMED AFTER EACH PHASE OF WORK AND THEN A FINAL FULL (NOT PARTIAL) TEST AND BALANCE OF ALL FIFTH FLOOR EAST.
  3. SEE DETAIL SHEET FOR TERMINAL UNIT PIPING DETAIL.
  4. PROVIDE BALANCING VALVE ON RETURN FOR EACH HOT WATER FINNED TUBE RADIATION.
  5. I.M.C. TO VERIFY EXISTING CONVECTOR ENCLOSURE SPACES PRIOR TO SUBMITTAL.
  6. INSULATE ALL EXISTING STEAM PIPING AND RISERS EXPOSED FROM ASBESTOS ABATEMENT, APPROXIMATELY 610 LINEAR FEET OF PIPE INSULATION.
  7. MECHANICAL CONTRACTOR SHALL PROVIDE ALL SAFETY EQUIPMENT AS REQUIRED FOR WORKING IN MECHANICAL SHAFTS WITHOUT A FLOOR.

- KEYED NOTES**  
**NOTES PERTAIN TO MP102 - MP104**
1. RETROFIT EXISTING ENCLOSURE WITH HOT WATER CONVECTOR AND REUSE EXISTING CONVECTOR COVER.
  2. HOT WATER CONVECTOR REQUIRES NEW ENCLOSURE AND NEW CONVECTOR COVER TO MATCH EXISTING.
  3. PROVIDE HOT WATER SUPPLY TAKEOFF IN CEILING AND CAP. THIS WILL SERVE FUTURE HOT WATER CONVECTOR ON 6TH FLOOR.
  4. PROVIDE HOT WATER RETURN TAKEOFF IN CEILING AND CAP. THIS WILL SERVE FUTURE HOT WATER CONVECTOR ON 6TH FLOOR.



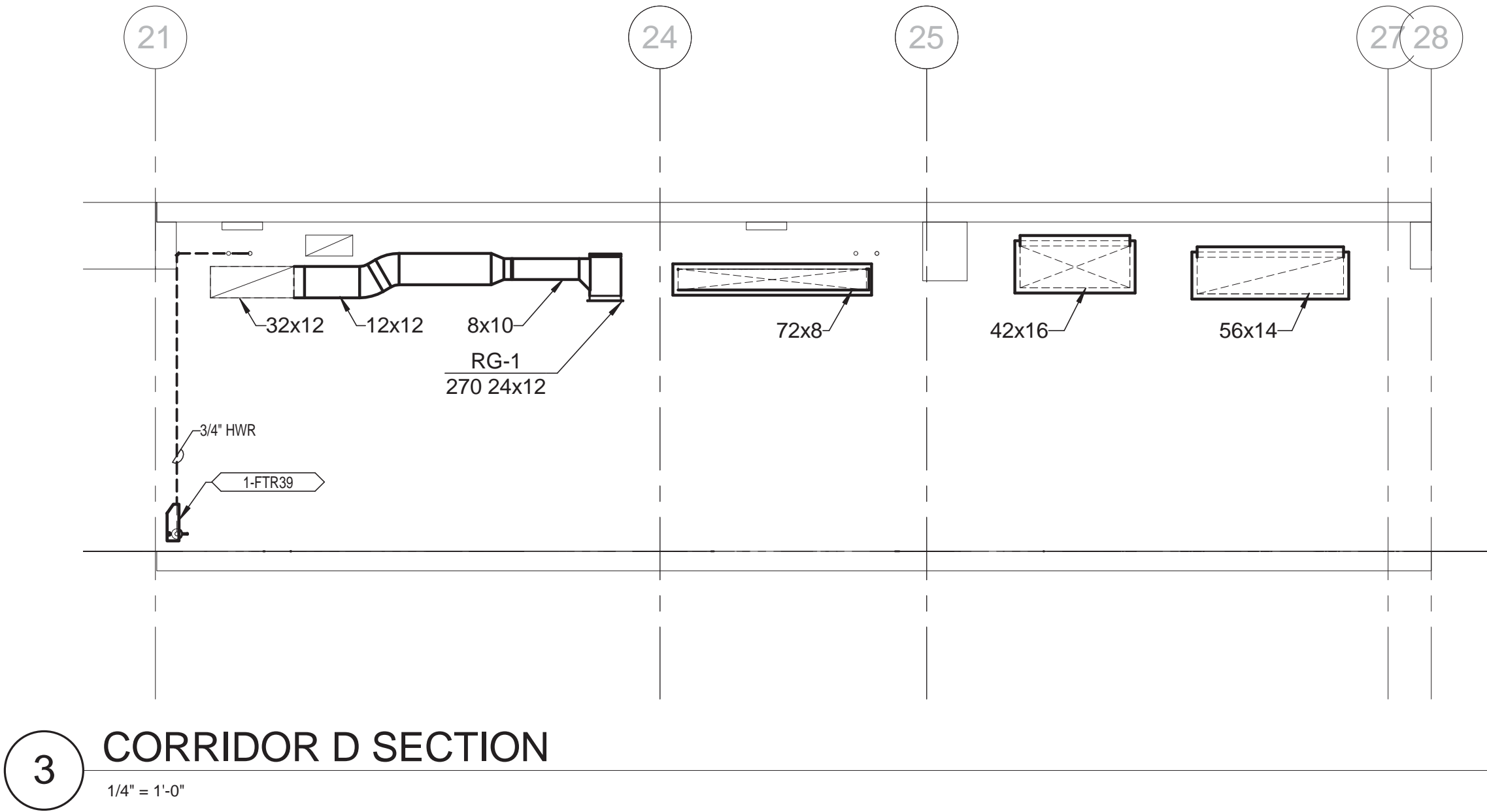
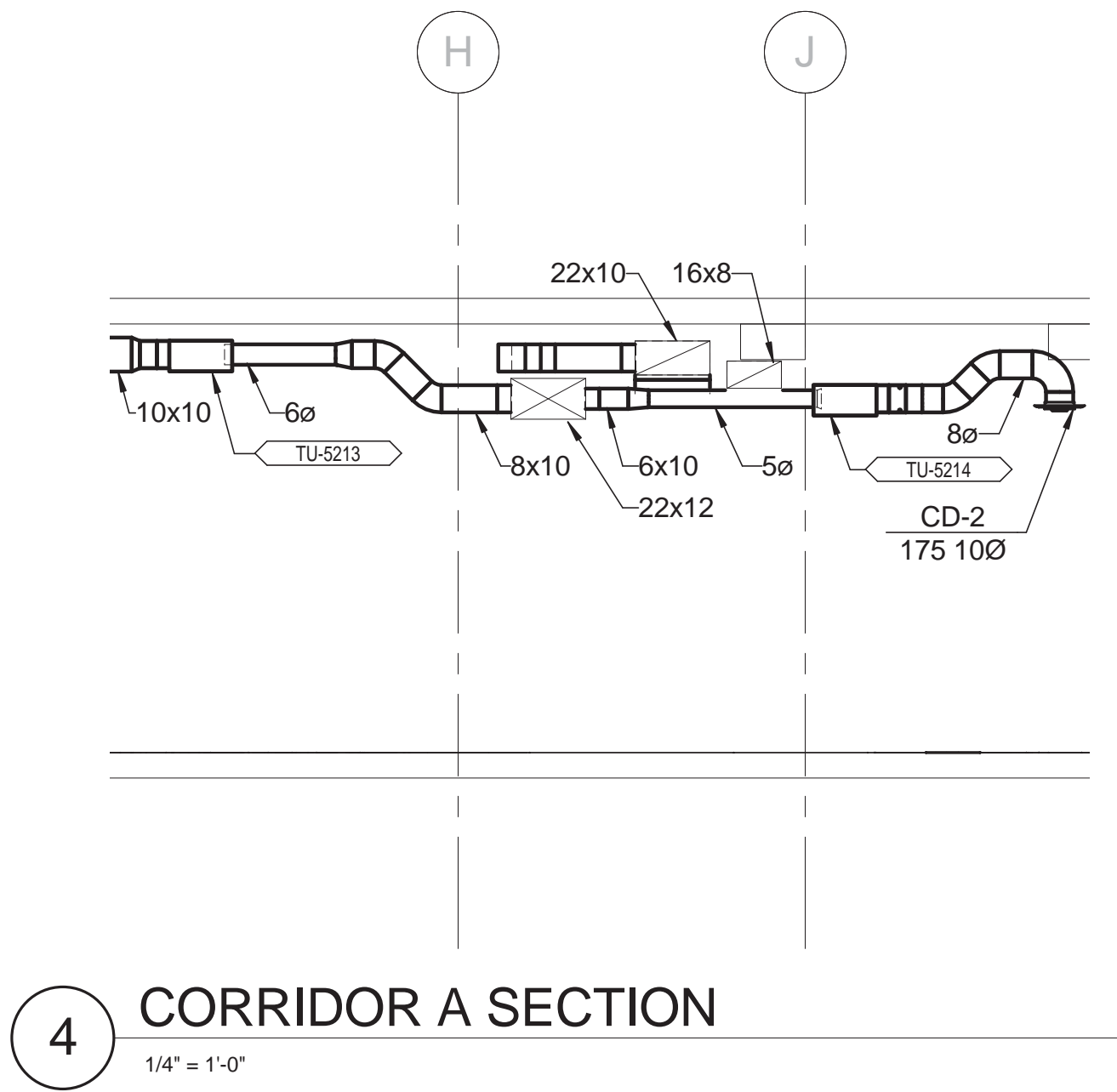
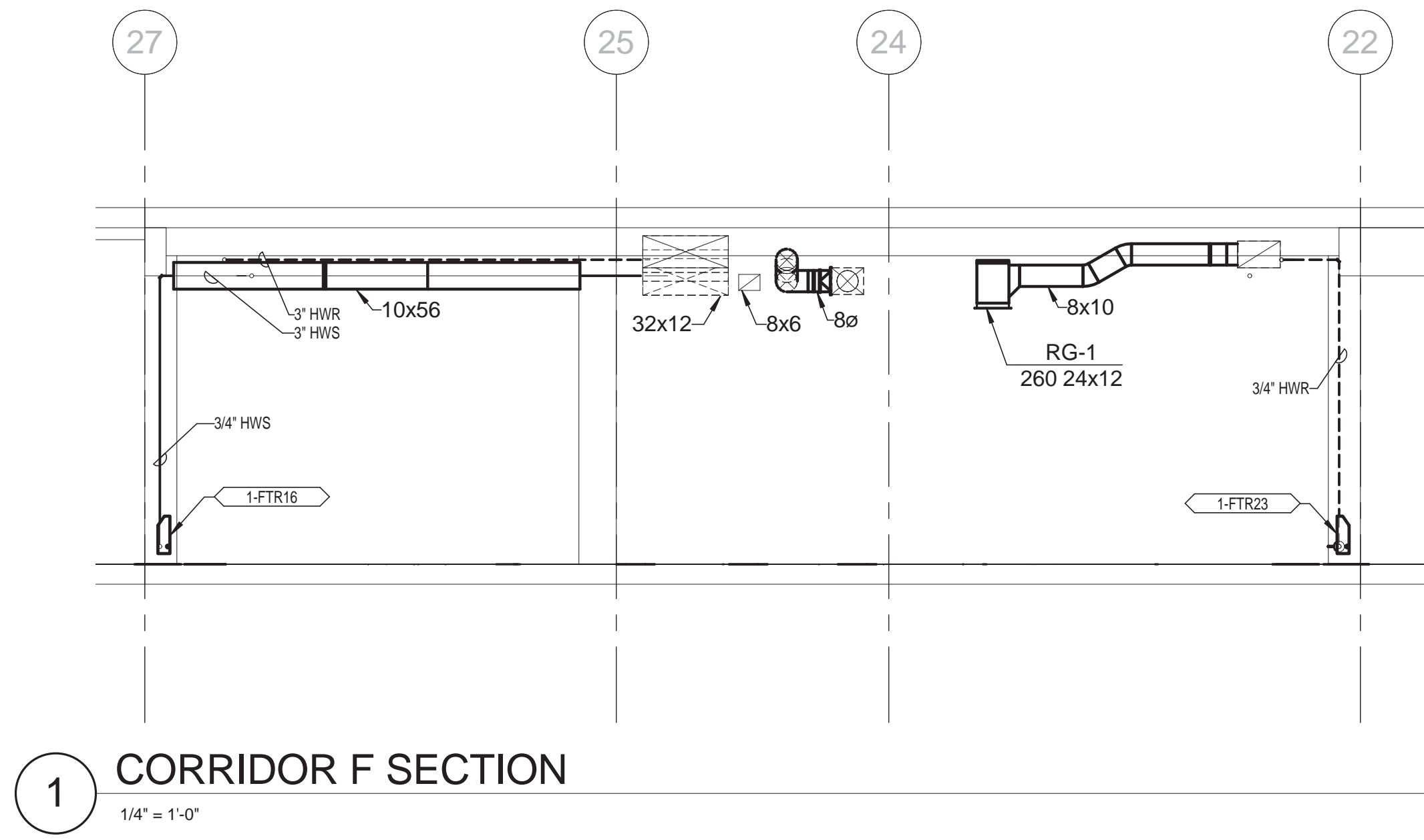
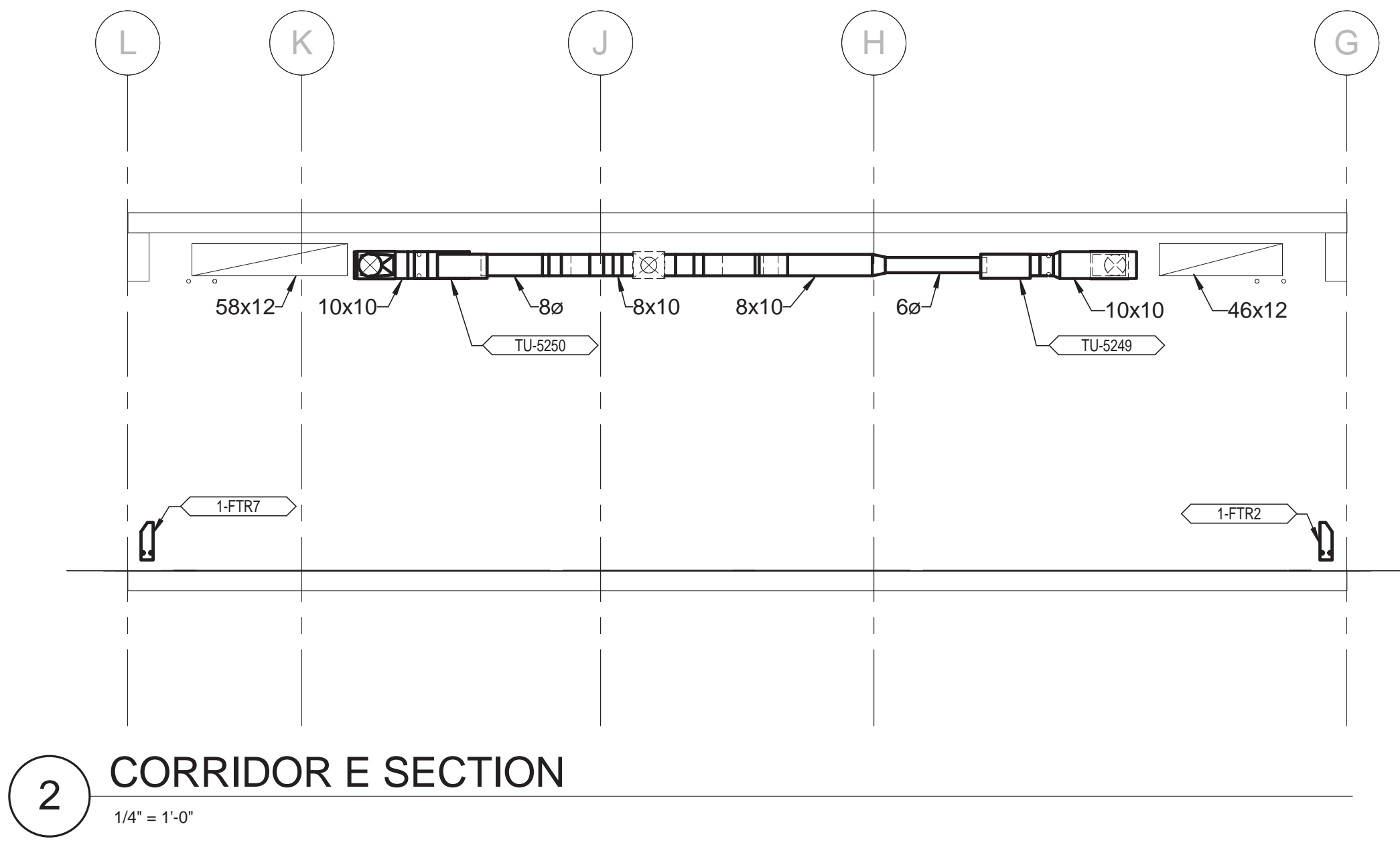
**1 5TH FLOOR MECHANICAL PIPING PLAN - PART C - EAST**  
1/4" = 1'-0"

				<div>CONSULTANTS:</div> <div><div>engineers   consultants   commissioning MEP Associates, LLC   2750 Arbor Court   Eau Claire, WI 54601 Phone: 715.832.5660   Fax: 715.832.5668   www.mepassociates.com MEP PROJECT NO.: N08.10.01</div></div>		<div>ARCHITECT/ENGINEERS:</div> <div><div></div><div>420 RAIL STREET NEGAUNEE, MI 49866 PHONE: 906-475-6616 FAX: 906-475-6954 NDW PROJECT NUMBER:1010</div></div>		<div>Project Title</div> <div>5TH MECHANICAL PIPING - PART C</div> <div>Approved: Project Director</div>		<div>Project Number</div> <div>Upgrade Five East</div> <div>Building Number</div> <div>1</div> <div>Drawing Number</div> <div>MP104</div> <div>Dwg. 80 of 115</div>		<div>Office of Construction and Facilities Management</div> <div> Department of Veterans Affairs</div>			
								<div>Location</div> <div>IRON MOUNTAIN, MICHIGAN</div>		<div>Date</div> <div>10/05/2015</div>		<div>Checked</div> <div>JAU</div>		<div>Drawn</div> <div>BDRD</div>	

A  
B  
C  
D  
E  
F  
G


three inches = one foot  
one and one half inches = one foot  
one inch = one foot  
three quarters inch = one foot  
one half inch = one foot  
three eighths inch = one foot  
one quarter inch = one foot  
one eighth inch = one foot

A  
B  
C  
D  
E  
F  
G




	100% Construction Documents	10/05/2015
	Revisions:	Date

CONSULTANTS:



engineers | consultants | commissioning  
MEP Associates, LLC | 2750 Arbor Court | Eau Claire, WI 54701  
Phone: 715.832.5580 | Fax: 715.832.5568 | www.mepassociates.com  
MEP PROJECT NO.: N08.10.01

ARCHITECT/ENGINEERS:



420 RAIL STREET  
NEGAUNEE, MI 49866  
PHONE: 906-475-6616  
FAX: 906-475-6954  
NDW PROJECT NUMBER:1010

Drawing Title MECHANICAL SECTIONS	
Approved: Project Director	

Project Title Upgrade Five East		Project Number 585-10-127
Location IRON MOUNTAIN, MICHIGAN		Building Number 1
Date 10/05/2015	Checked JAU	Drawn BDRD
M301		Dwg. 81 of 115

Office of  
Construction  
and Facilities  
Management

 Department of  
Veterans Affairs