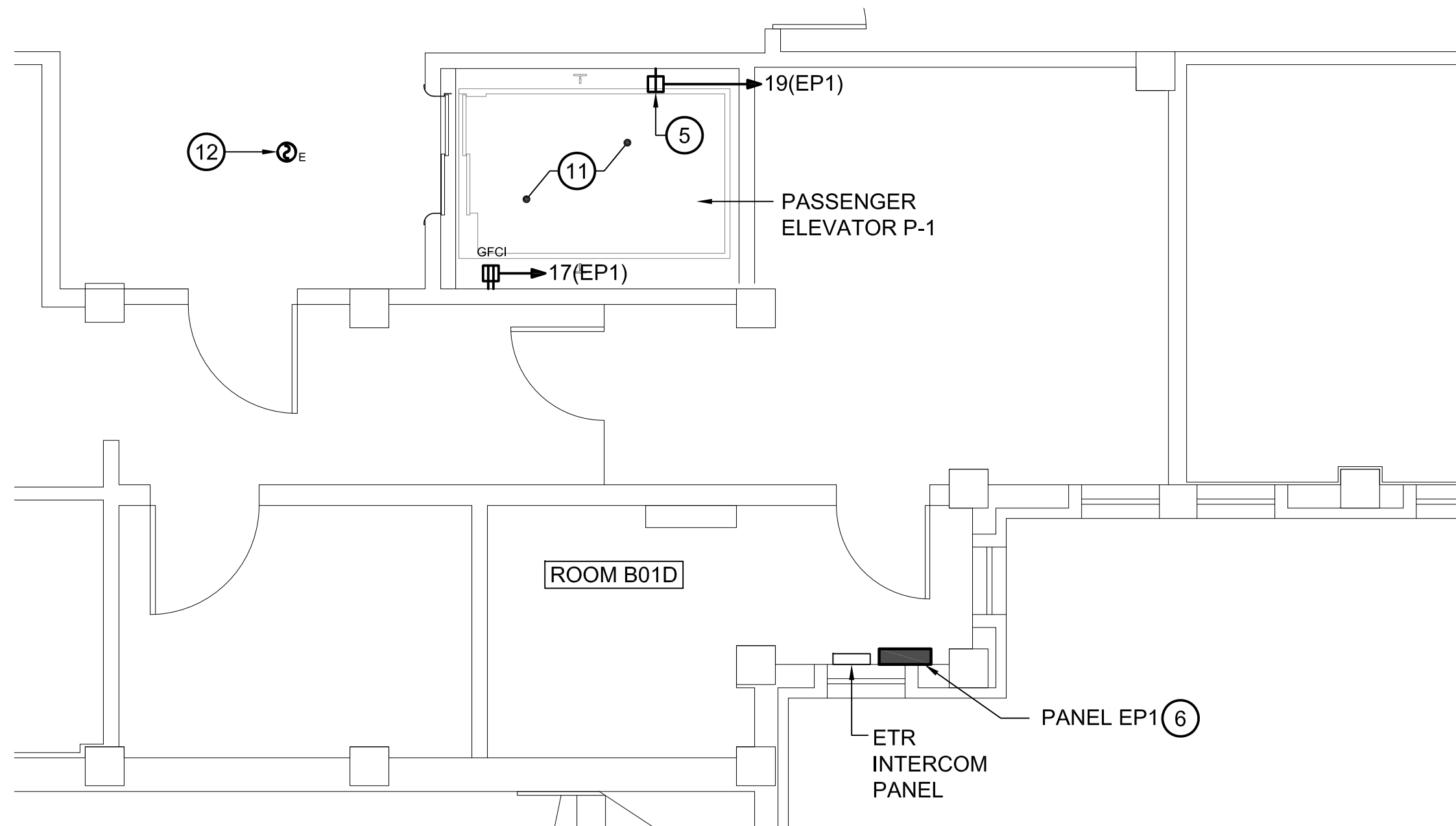
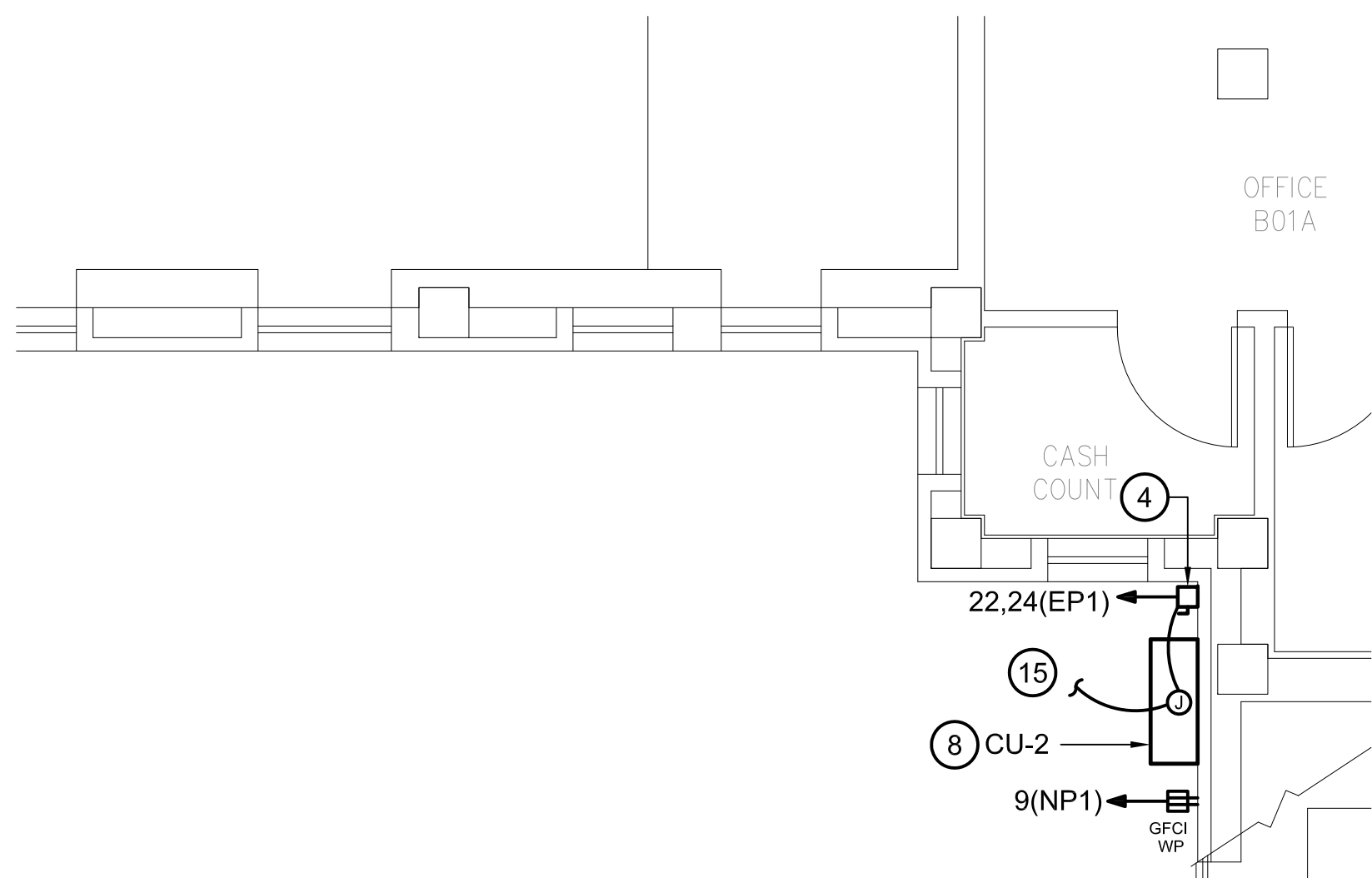


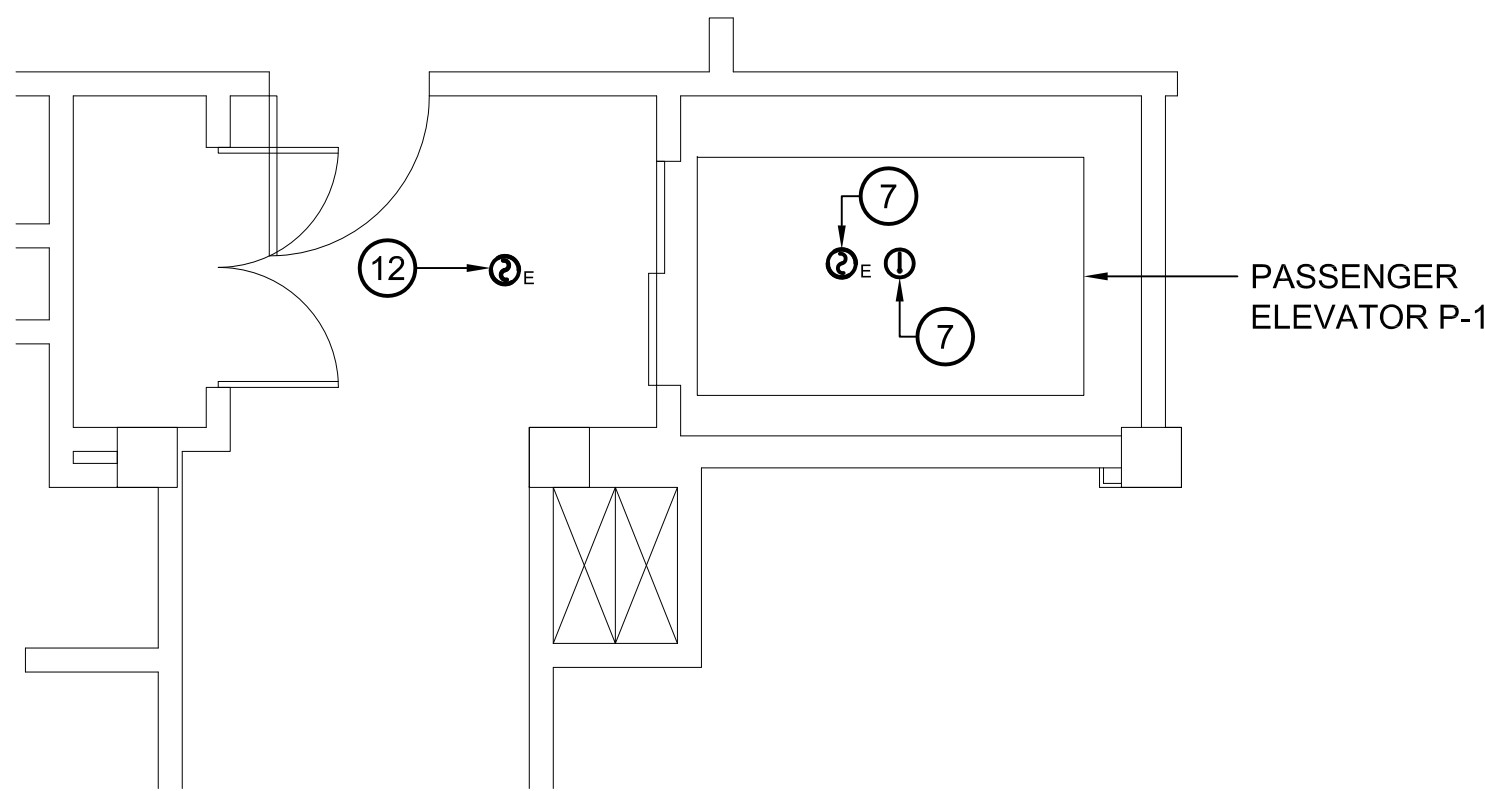
A three inches = one foot
B one and one-half inches = one foot
C one inch = one foot
D three-quarters inch = one foot
E one-half inch = one foot
F three-eighths inch = one foot
G one-quarter inch = one foot
H one-eighth inch = one foot



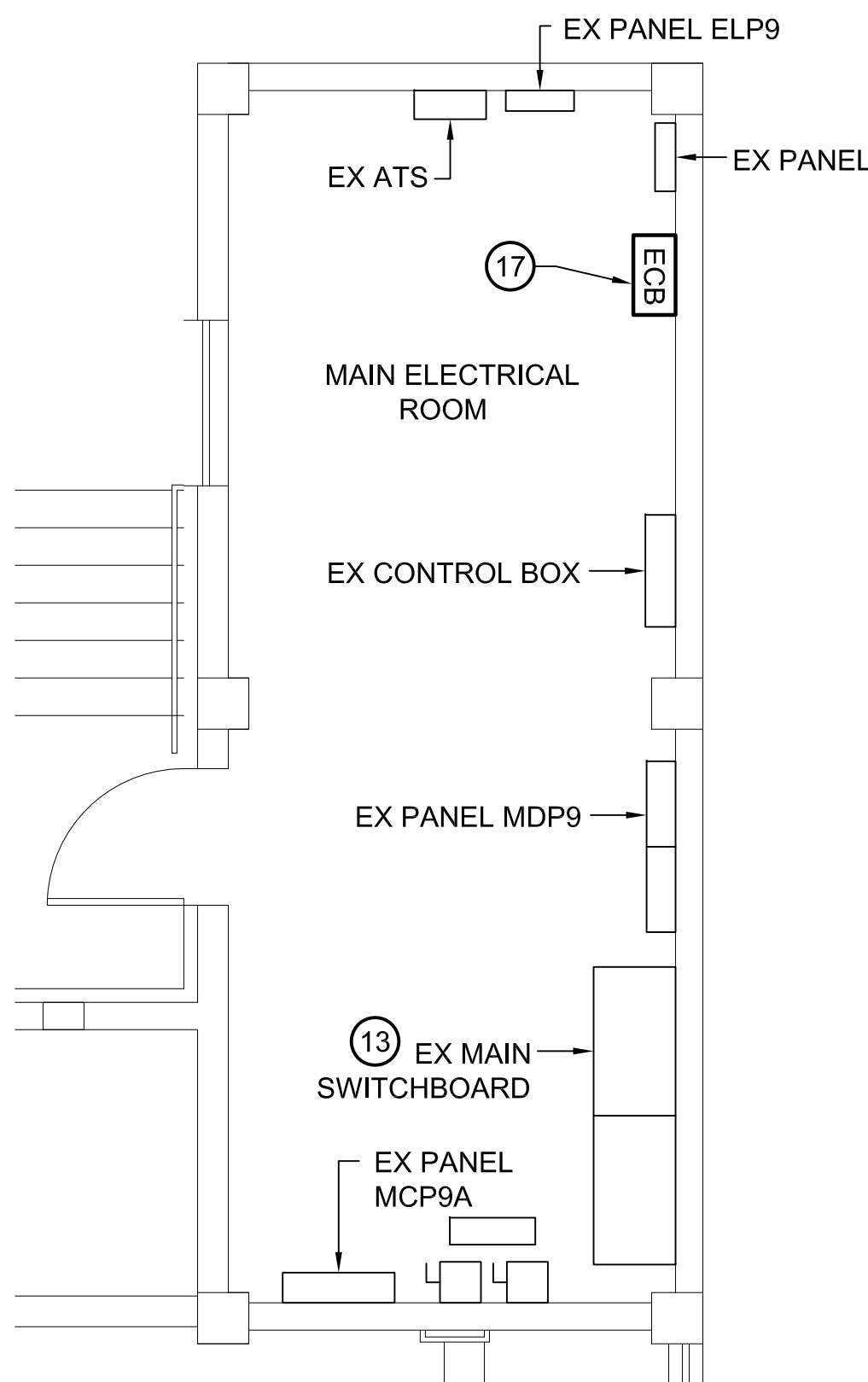
1 PARTIAL BASEMENT FLOOR PLAN - ELECTRICAL - NEW WORK
SCALE: 1/4" = 1'-0"



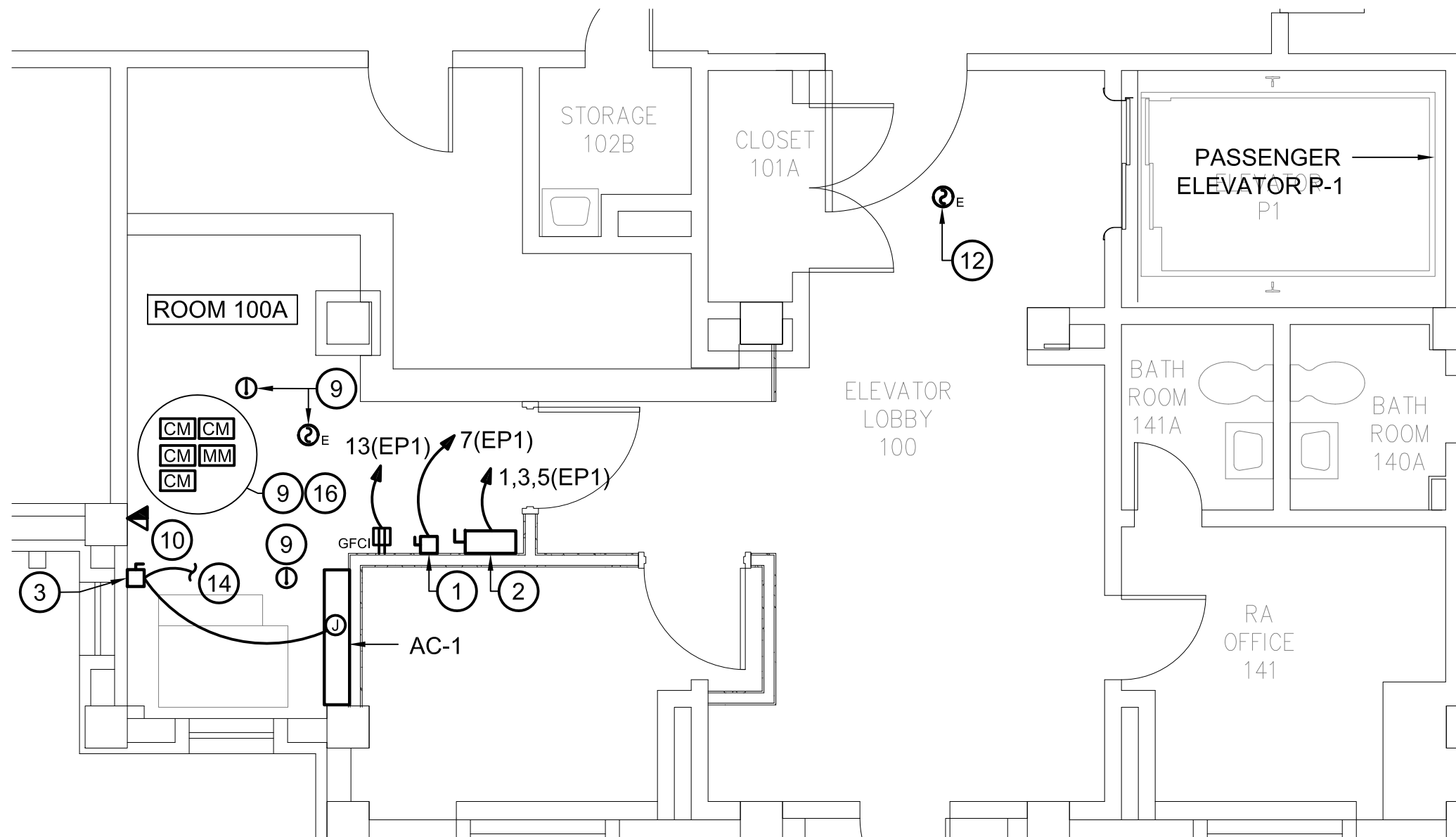
2 PARTIAL BASEMENT FLOOR PLAN - ELECTRICAL - NEW WORK
SCALE: 1/4" = 1'-0"



3 PARTIAL SECOND FLOOR PLAN - ELECTRICAL - NEW WORK
SCALE: 1/4" = 1'-0"



4 PARTIAL BASEMENT FLOOR PLAN ELECTRICAL - NEW WORK
SCALE: 1/4" = 1'-0"



5 PARTIAL FIRST FLOOR PLAN - ELECTRICAL - NEW WORK
SCALE: 1/4" = 1'-0"

GENERAL NOTES:

- REFER TO E001 FOR ELECTRICAL LEGEND, ABBREVIATIONS AND GENERAL NOTES.
- INFORMATION SHOWN ON THIS DRAWING PERTAINING TO EXISTING CONDITIONS HAS BEEN OBTAINED FROM AVAILABLE BUILDING DRAWINGS OR GENERAL FIELD OBSERVATIONS AND MAY NOT INDICATE ACTUAL EXISTING CONDITIONS IN DETAIL OR DIMENSION. THE CONTRACTOR IS RESPONSIBLE FOR DETERMINING THE ACTUAL EXISTING CONDITIONS PRIOR TO FABRICATION OR PERFORMANCE OF ANY WORK. SHOULD CONDITIONS BE DISCOVERED THAT PREVENT EXECUTION OF THE WORK AS INDICATED, THE CONTRACTOR SHALL IMMEDIATELY NOTIFY THE ENGINEER IN WRITING AND AWAIT DIRECTION BEFORE PROCEEDING WITH THE WORK.
- UNLESS OTHERWISE NOTED, ELECTRICAL ITEMS SHOWN HEAVY DASHED (---) SHALL BE REMOVED, ELECTRICAL ITEMS SHOWN HEAVY SOLID (———) SHALL BE NEW AND ELECTRICAL ITEMS SHOWN LIGHT SOLID (—) SHALL BE EXISTING TO REMAIN.
- EXISTING EQUIPMENT SHOWN IS EXISTING TO REMAIN UNLESS NOTED OTHERWISE.
- REMOVE, PROTECT AND REINSTALL EXISTING CEILING COMPONENTS AS REQUIRED FOR ELECTRICAL WORK.

DRAWING NOTES:

- PROVIDE NEW 120V, 30A, 1 POLE, SOLID NEUTRAL FUSED DISCONNECT SWITCH WITH 20A FUSE IN NEMA 1 ENCLOSURE FOR ELEVATOR CAB LIGHTING. PROVIDE (2) #12 & (1) #12 GND IN 3/4" CONDUIT BETWEEN THE DISCONNECT SWITCH AND THE ELEVATOR CONTROLLER. PROVIDE ENGRAVED LABEL " ELEVATOR P-1 CAB LIGHTS".
- PROVIDE 208V, 200A, 3 POLE, FUSED ELEVATOR POWER MODULE SHUNT TRIP SWITCH WITH 120V CONTROL TRANSFORMER, FIRE SAFETY INTERFACE RELAY (COORDINATE COIL VOLTAGE WITH FIRE ALARM SYSTEM), 'ON' RUN LIGHT, AUXILIARY CONTACTS AND FIRE ALARM SHUNT TRIP VOLTAGE MONITORING RELAY. SWITCH SHALL BE AS MANUFACTURED BY COOPER BUSSMANN, CATALOG #PS2-T20-R1/2-KG-BF3 OR EQUAL. COORDINATE FUSE SIZE WITH ELEVATOR MANUFACTURER. PROVIDE ENGRAVED LABEL " ELEVATOR P-1".
- PROVIDE NEW 208V, 30A, 2 POLE, FUSED DISCONNECT SWITCH WITH 15A FUSE IN NEMA 1 ENCLOSURE. COORDINATE FUSE SIZE WITH AC UNIT MANUFACTURER.
- PROVIDE NEW 208V, 30A, 2 POLE, FUSED DISCONNECT SWITCH WITH 20A FUSE IN NEMA 4 STAINLESS STEEL ENCLOSURE. COORDINATE FUSE SIZE WITH AC UNIT MANUFACTURER.
- RECEPTACLE FOR ELEVATOR PIT SUMP PUMP. COORDINATE LOCATION WITH PUMP INSTALLER.
- PROVIDE NEW PANELBOARD. INTERCEPT EXISTING TO REMAIN CIRCUITS AND RECONNECT TO NEW CIRCUIT BREAKERS. RECONNECT TO EXISTING FEEDER.
- EQUIPMENT LOCATED AT TOP OF ELEVATOR HOISTWAY.
- EQUIPMENT LOCATED OUTDOOR ON CONCRETE PADS.
- REINSTALL DEVICE. CONNECT FIRE ALARM DEVICE TO EXISTING FIRE ALARM INITIATION CIRCUIT. SEE FIRE ALARM RISER.
- COORDINATE WITH THE VA FOR PHONE LINE INSTALLATION.
- EQUIPMENT LOCATED IN ELEVATOR PIT.
- FIRE ALARM DEVICE IS EXISTING TO REMAIN.
- REUSE EXISTING 125A, 3 POLE SPARE CIRCUIT BREAKER TO FEED NEW PANEL NP1.
- INDOOR AC UNIT IS FED FROM ASSOCIATED OUTDOOR ACCU UNIT. PROVIDE WIRE AND CONDUIT AS REQUIRED BY AC MANUFACTURER.
- PROVIDE CONNECTIONS TO ASSOCIATED INDOOR AC UNIT SHOWN ON PLANS. PROVIDE WIRE AND CONDUIT AS REQUIRED BY AC MANUFACTURER.
- RELOCATED FIRE ALARM DEVICES. CONNECT TO INITIATION CIRCUIT. SEE FIRE ALARM RISER. DEVICES ARE FOR PRIMARY RECALL, ALTERNATE RECALL, SHUNT TRIP, FIREMAN'S HAT, AND MONITORING OF SHUNT TRIP CIRCUIT.
- ENCLOSED CB. CONNECT TO ATS AND PANEL EP1 AS SHOWN IN ONE-LINE DIAGRAM.

BID DOCUMENTS

Revisions		Date		Consultants		BURDETTE KOEHLER MURPHY & ASSOCIATES, INC.		Seal		DERBY enterprises		Drawing Title		Project Title		Date	
				RICKERT ENGINEERING, INC.		MECHANICAL / ELECTRICAL / FIRE PROTECTION / TELECOMMUNICATIONS				2215 Conowingo Rd, Suite 100 Bel Air, Maryland 21015-1436 410.803.0009 fax 410.836.6611		PARTIAL PLANS ELECTRICAL – NEW WORK		REPLACE BUILDING 9 ELEVATORS		26, September 2014	
				ROBERT L. SEYMOUR ASSOCIATES		BUILDING COST CONSULTANTS, INC.						Approved: Chief Engineering Services		Building Number 9		Checked RAM	
												Approved: Medical Center Director		Drawn QA		Project No. 542-08-110	
														Location COATESVILLE, PENNSYLVANIA		DRAWING NO. E202	
																Dwg. - Of xx	