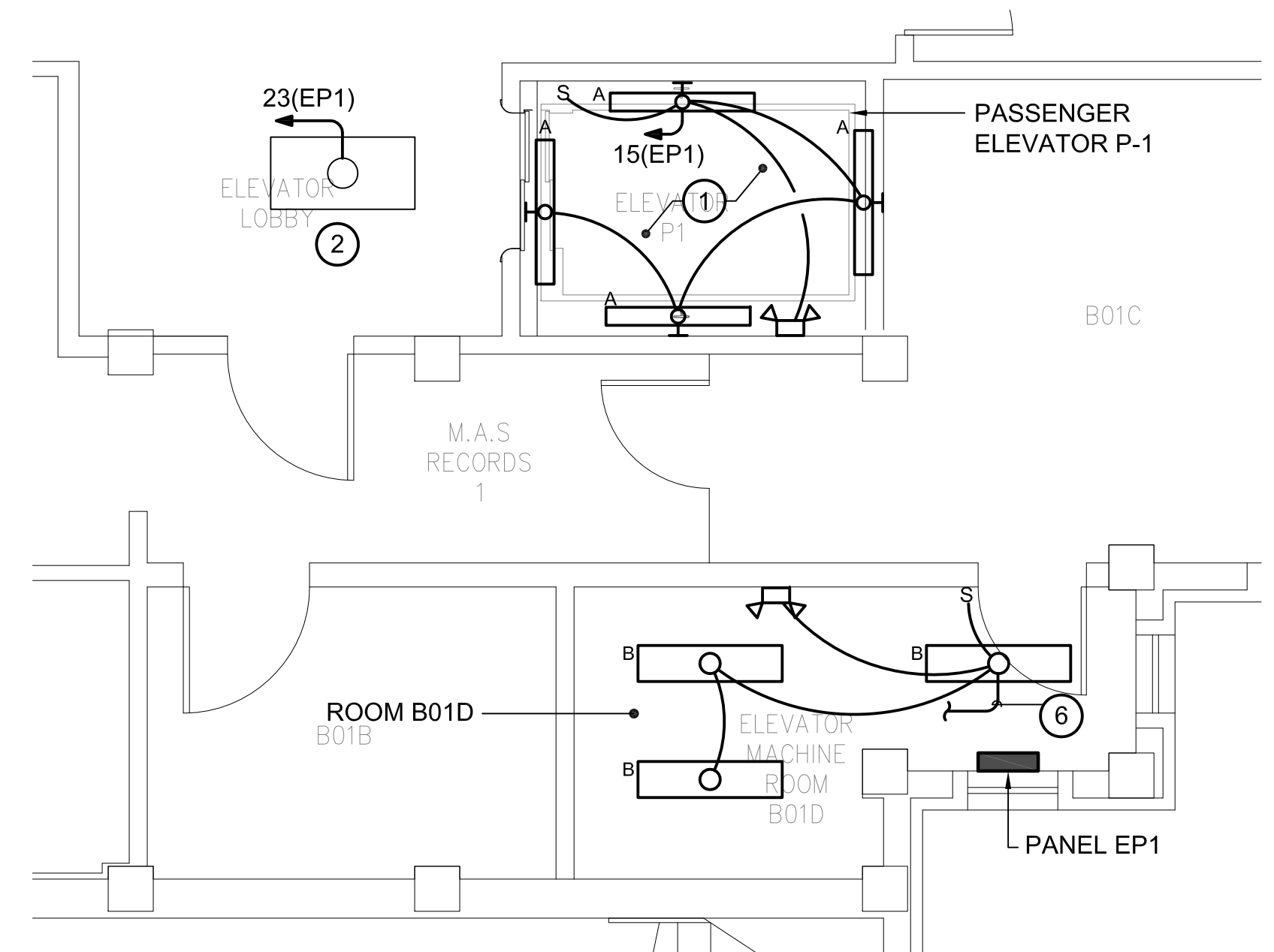
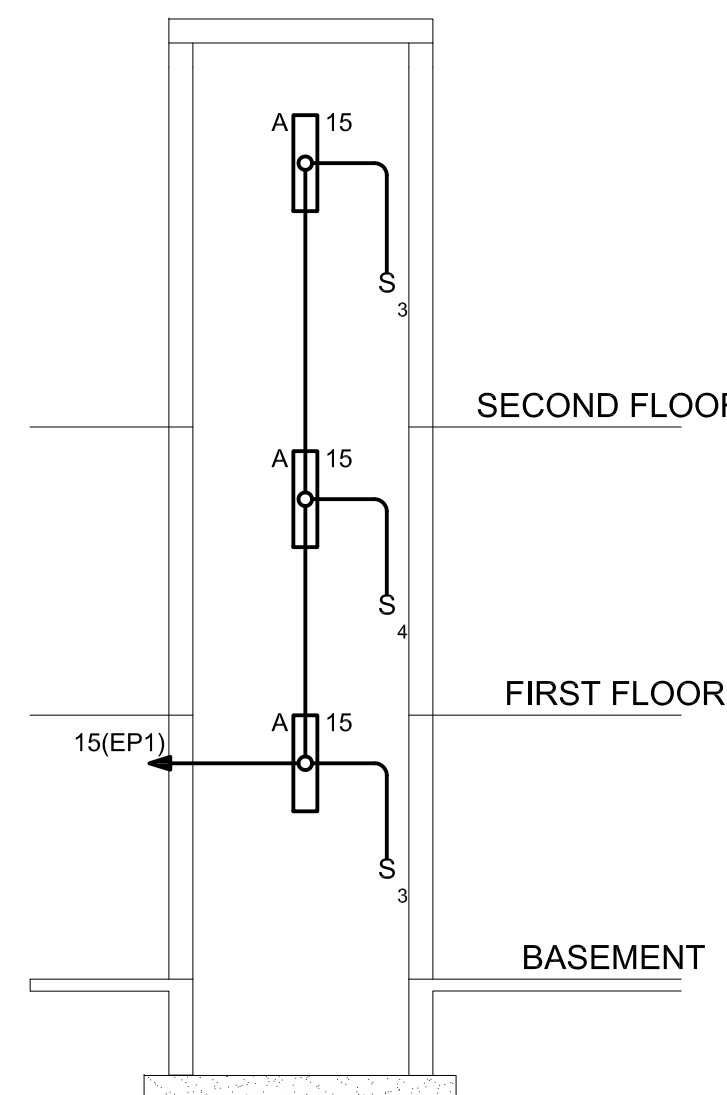


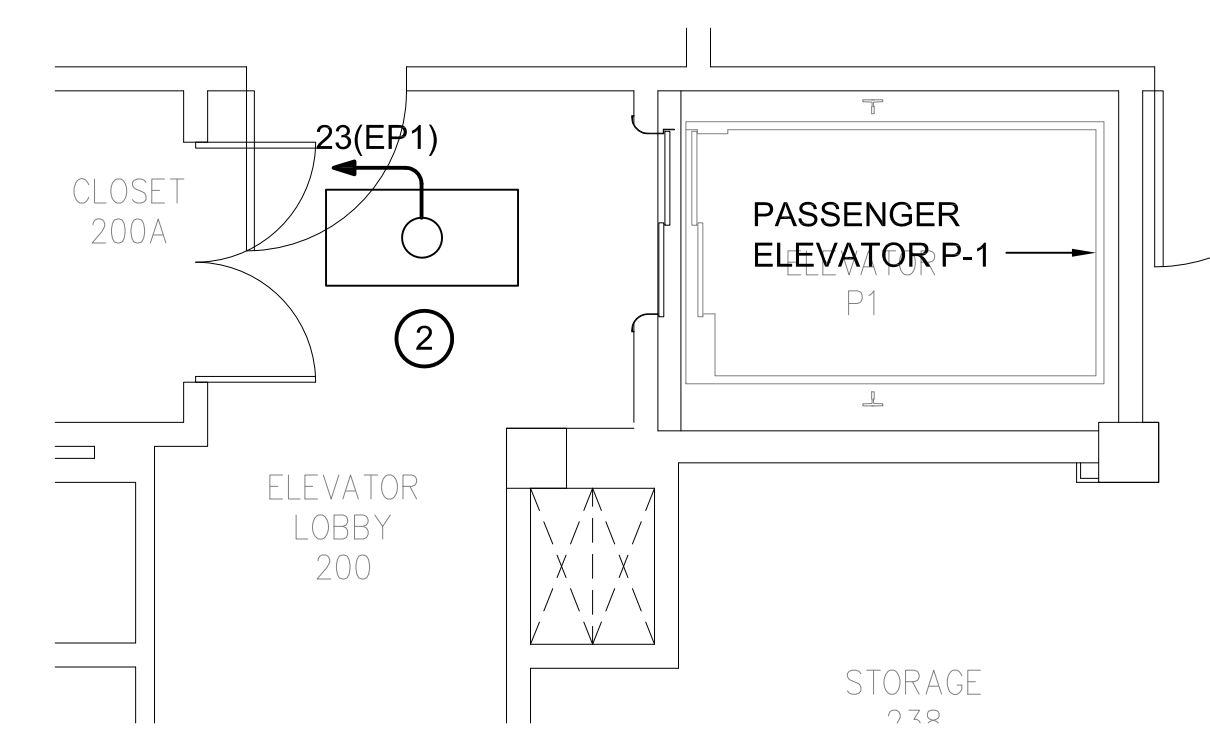
A three inches = one foot
B one and one-half inches = one foot
C one inch = one foot
D three-quarters inch = one foot
E one-half inch = one foot
F three-eighths inch = one foot
G one-quarter inch = one foot
H one-eighth inch = one foot



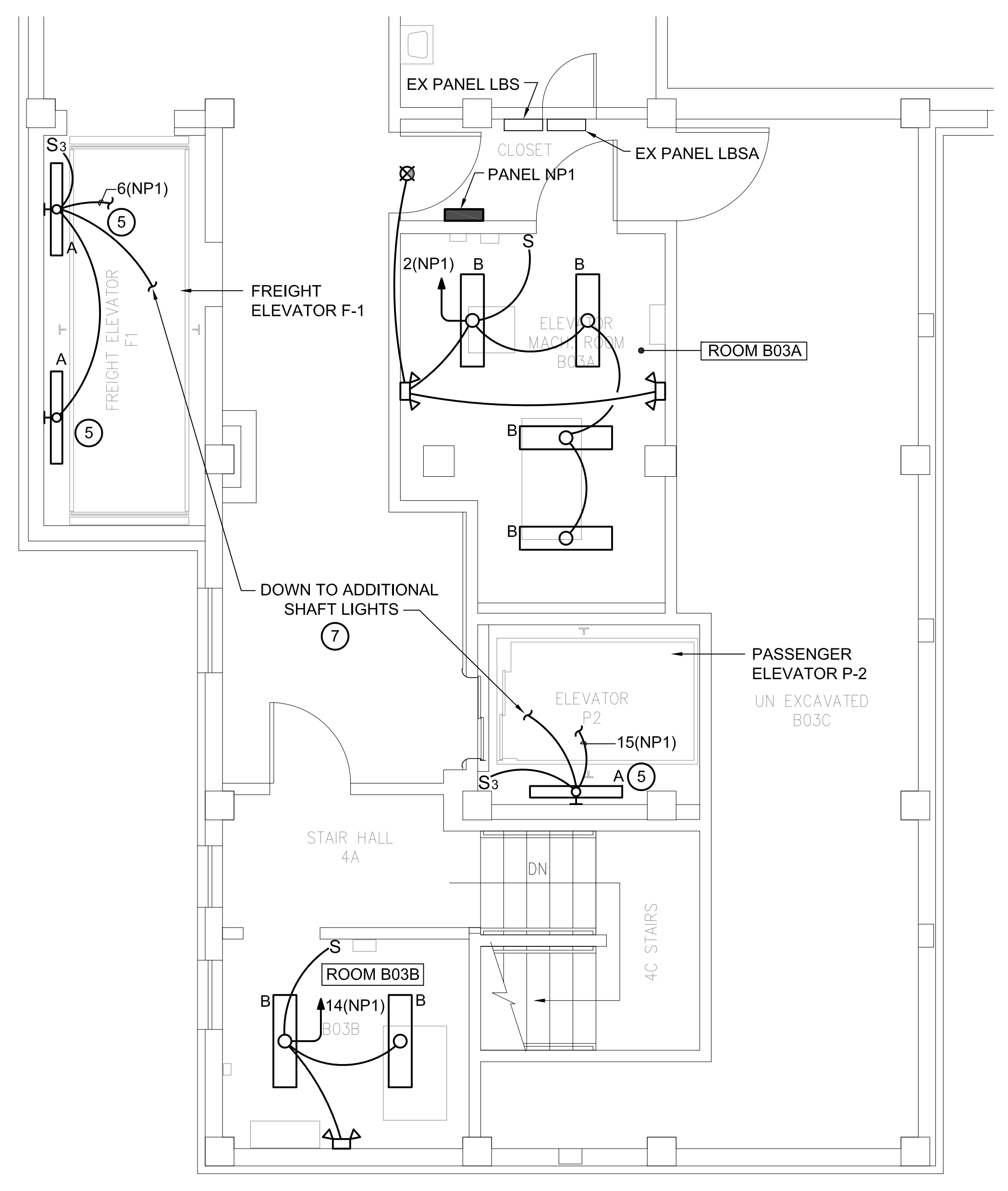
1 PARTIAL BASEMENT FLOOR PLAN LIGHTING - NEW WORK
SCALE: 1/4" = 1'-0"



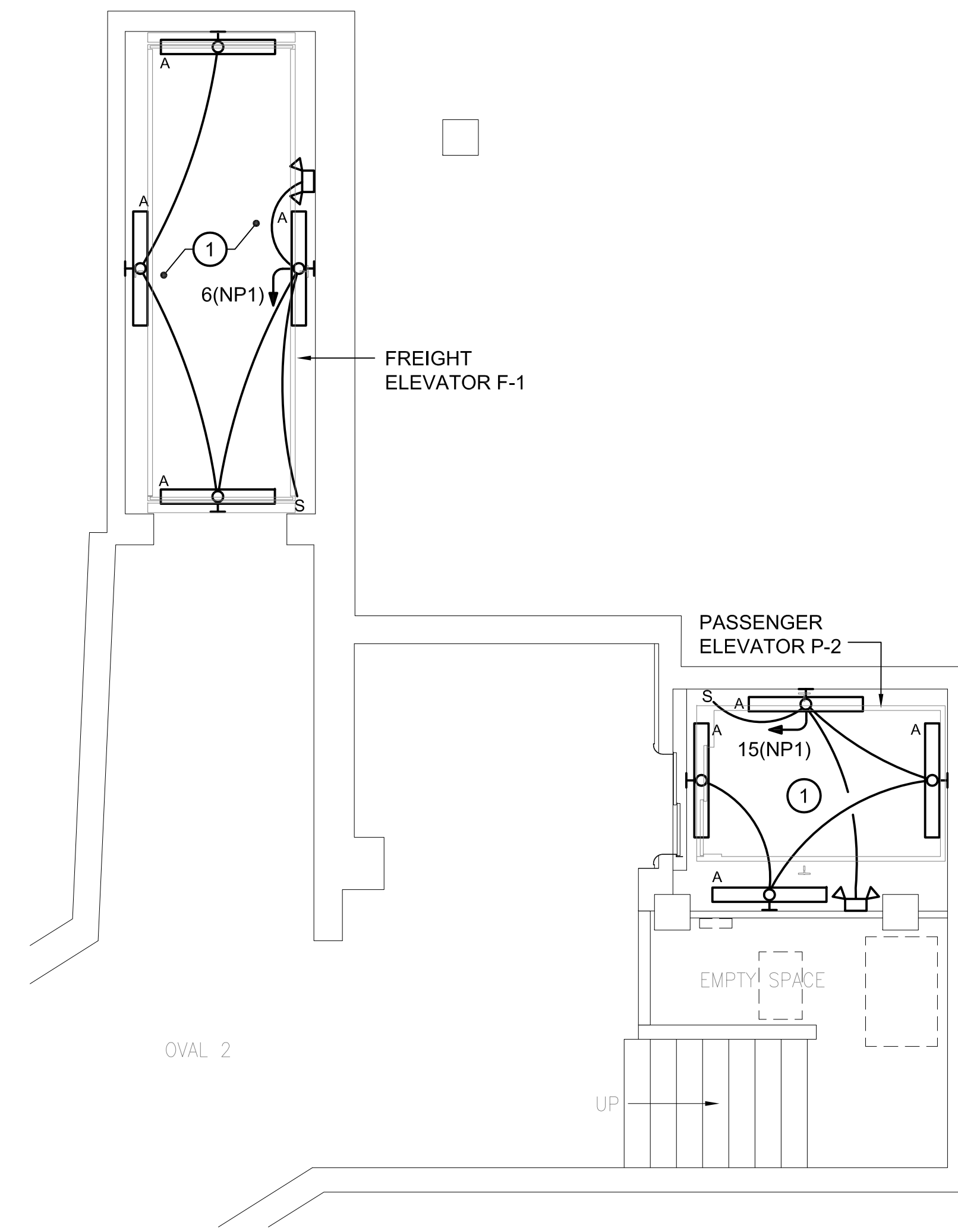
2 ELEVATOR P1 SHAFT SECTION LIGHTING
SCALE: NTS



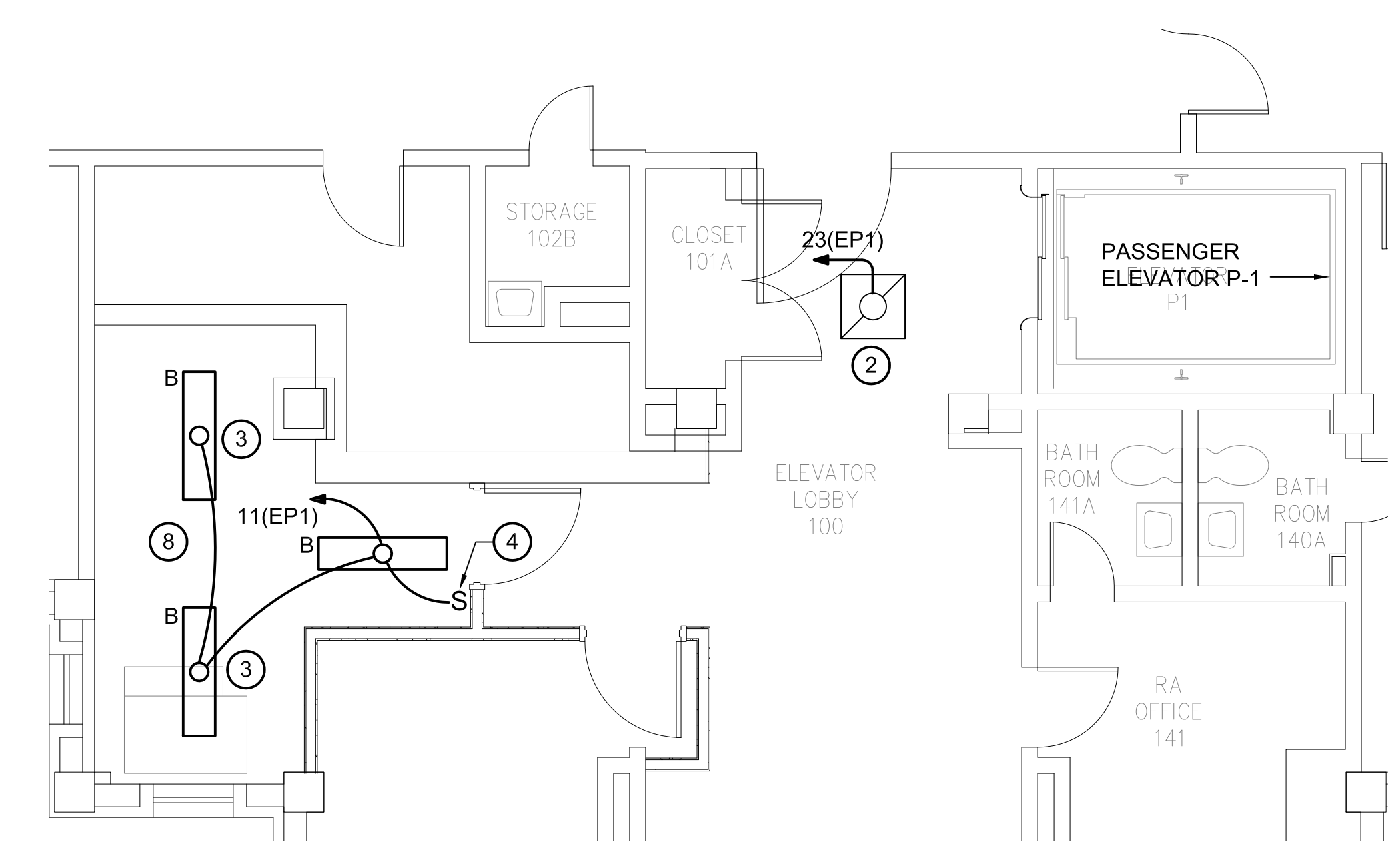
3 PARTIAL SECOND FLOOR PLAN LIGHTING - NEW WORK
SCALE: 1/4" = 1'-0"



4 PARTIAL BASEMENT FLOOR PLAN - LIGHTING - NEW WORK
SCALE: 1/4" = 1'-0"



5 PARTIAL SUB BASEMENT FLOOR PLAN LIGHTING - NEW WORK
SCALE: 1/4" = 1'-0"



6 PARTIAL FIRST FLOOR PLAN - LIGHTING - NEW WORK
SCALE: 1/4" = 1'-0"

- GENERAL NOTES:**
- REFER TO E001 FOR ELECTRICAL LEGEND, ABBREVIATIONS, GENERAL NOTES AND LIGHTING FIXTURE SCHEDULE.
 - INFORMATION SHOWN ON THIS DRAWING PERTAINING TO EXISTING CONDITIONS HAS BEEN OBTAINED FROM AVAILABLE BUILDING DRAWINGS OR GENERAL FIELD OBSERVATIONS AND MAY NOT INDICATE ACTUAL EXISTING CONDITIONS IN DETAIL OR DIMENSION. THE CONTRACTOR IS RESPONSIBLE FOR DETERMINING THE ACTUAL EXISTING CONDITIONS PRIOR TO FABRICATION OR PERFORMANCE OF ANY WORK. SHOULD CONDITIONS BE DISCOVERED THAT PREVENT EXECUTION OF THE WORK AS INDICATED, THE CONTRACTOR SHALL IMMEDIATELY NOTIFY THE ENGINEER IN WRITING AND AWAIT DIRECTION BEFORE PROCEEDING WITH THE WORK.
 - UNLESS OTHERWISE NOTED, ELECTRICAL ITEMS SHOWN HEAVY DASHED (---) SHALL BE REMOVED, ELECTRICAL ITEMS SHOWN HEAVY SOLID (—) SHALL BE NEW AND ELECTRICAL ITEMS SHOWN LIGHT SOLID () SHALL BE EXISTING TO REMAIN.
 - EXISTING EQUIPMENT SHOWN IS EXISTING TO REMAIN UNLESS NOTED OTHERWISE.
 - REMOVE, PROTECT AND REINSTALL EXISTING CEILING COMPONENTS AS REQUIRED FOR ELECTRICAL WORK.
 - EXIT AND EGRESS LIGHTS SHALL BE CONNECTED AHEAD OF THE SWITCH.
- DRAWING NOTES:**
- EQUIPMENT LOCATED IN ELEVATOR PIT.
 - DISCONNECT EXISTING LIGHT FIXTURE FROM EXISTING CIRCUIT AND RECONNECT TO NEW CIRCUIT FROM PANEL EP1 AS INDICATED. RESTORE CIRCUIT CONTINUITY OF EXISTING LIGHTING CIRCUIT.
 - REMOVE EXISTING LIGHT FIXTURE AND RETURN TO OWNER. RESTORE CIRCUIT CONTINUITY FOR PORTION OF CIRCUIT THAT IS TO REMAIN.
 - MAINTAIN EXISTING SWITCHING IN MACHINE ROOM.
 - MOUNT ON SHAFT WALL AT MID-POINT BETWEEN BASEMENT AND FIRST FLOOR. COORDINATE WITH EXISTING CONDITIONS.
 - CONNECT TO LOCAL LIGHTING CIRCUIT SERVING LIGHTING IN THIS AREA OF BUILDING. VERIFY EXISTING LIGHTING CIRCUIT LOAD DOES NOT EXCEED 16A ON A 20A CIRCUIT BREAKER.
 - PROVIDE SAME LIGHT FIXTURE(S) AND 3-WAY SWITCH FOR PORTION OF SHAFT BETWEEN SUB BASEMENT AND BASEMENT. COORDINATE WITH EXISTING CONDITIONS. LIGHT FIXTURES AND SWITCH ARE NOT SHOWN ON PLAN.
 - PROVIDE NEW LIGHT FIXTURES IN THIS ROOM.

Revisions	Date	Consultants RICKERT ENGINEERING, INC. STRUCTURAL ENGINEERING 8813 WALTHAM WOODS ROAD, SUITE 301 BALTIMORE, MARYLAND 21234 410.663.5110 — FAX 410.663.5114 ROBERT L. SEYMOUR ASSOCIATES AUTOMATIC TRANSPORT ENGINEERING 182 THOMAS JOHNSON DR., SUITE 200 FREDERICK, MARYLAND 21702 301.662.8112 — FAX 301.662.8117	BURDETTE KOEHLER MURPHY & ASSOCIATES, INC. MECHANICAL / ELECTRICAL / FIRE PROTECTION / TELECOMMUNICATIONS 1410 CLARKVIEW ROAD BALTIMORE, MARYLAND 21210 410.323.0600 — FAX 410.377.2543 BUILDING COST CONSULTANTS, INC. COST ESTIMATING 12917 — 30TH AVENUE PLATTSMOUTH, NEBRASKA 68048 402.298.8260 — FAX 402.298.8290	Seal	DERBY de enterprises ARCHITECTURE PLANNING ENGINEERING 2215 Conowingo Rd, Suite 100 Bel Air, Maryland 21015-1436 410.803.0009 fax 410.836.6611	Drawing Title PARTIAL PLANS AND ELEVATOR SHAFT SECTION LIGHTING — NEW WORK Approved: Chief Engineering Services Approved: Medical Center Director	Project Title REPLACE BUILDING 9 ELEVATORS Building Number 9 Location COATESVILLE, PENNSYLVANIA Checked RAM Drawn QA	DELLC JOB NO. 120701D Date 26, September 2014 Project No. 542-08-110 DRAWING NO. E301 Dwg. — Of xx
-----------	------	--	--	------	---	---	--	--