

1
2
3
4
5
6
7
8
9

A
three inches = one foot

B
one and one-half inches = one foot

C
one inch = one foot

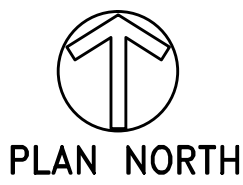
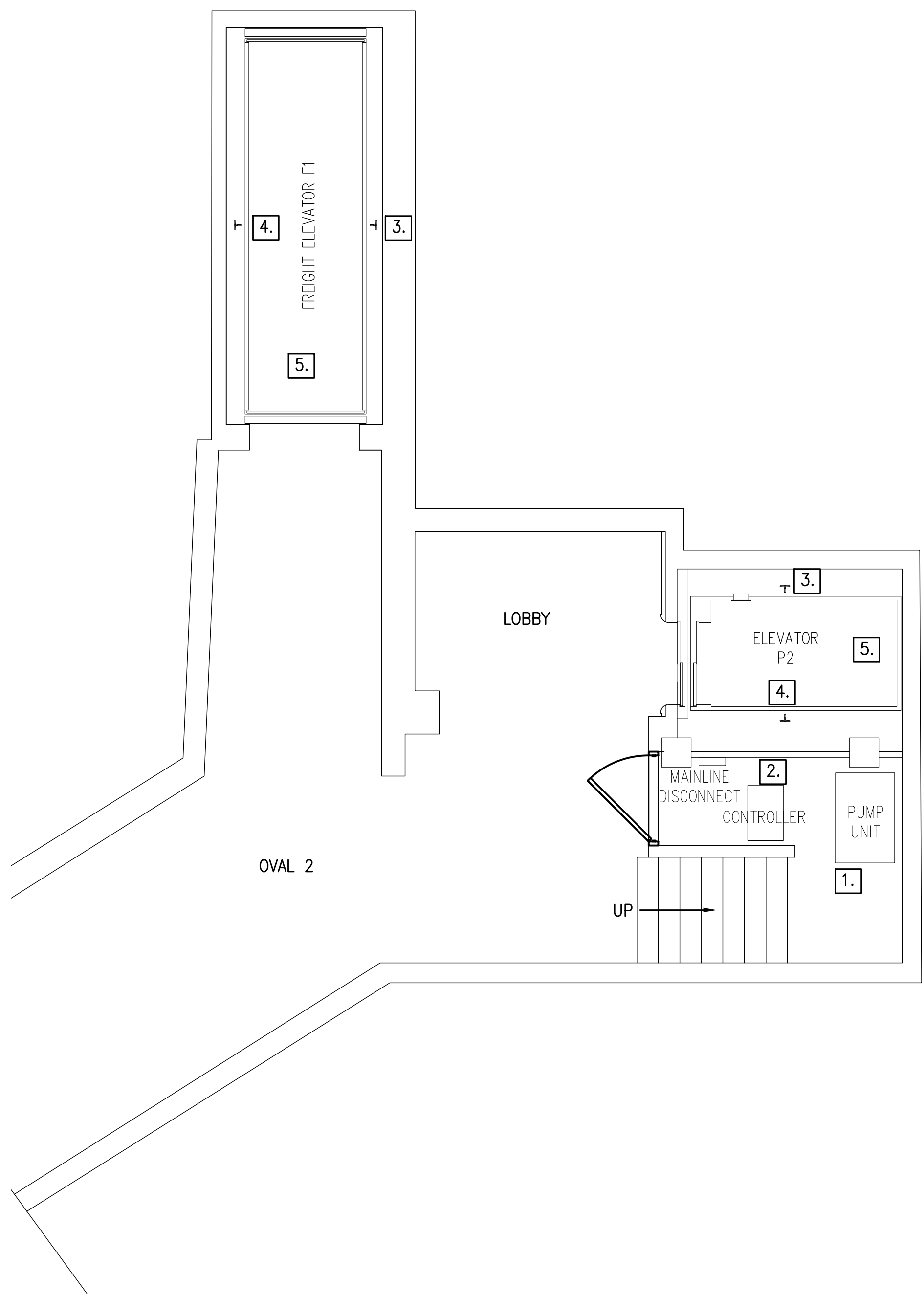
D
three-quarters inch = one foot

E
one-half inch = one foot

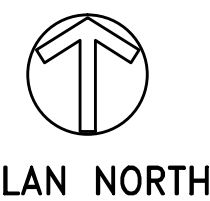
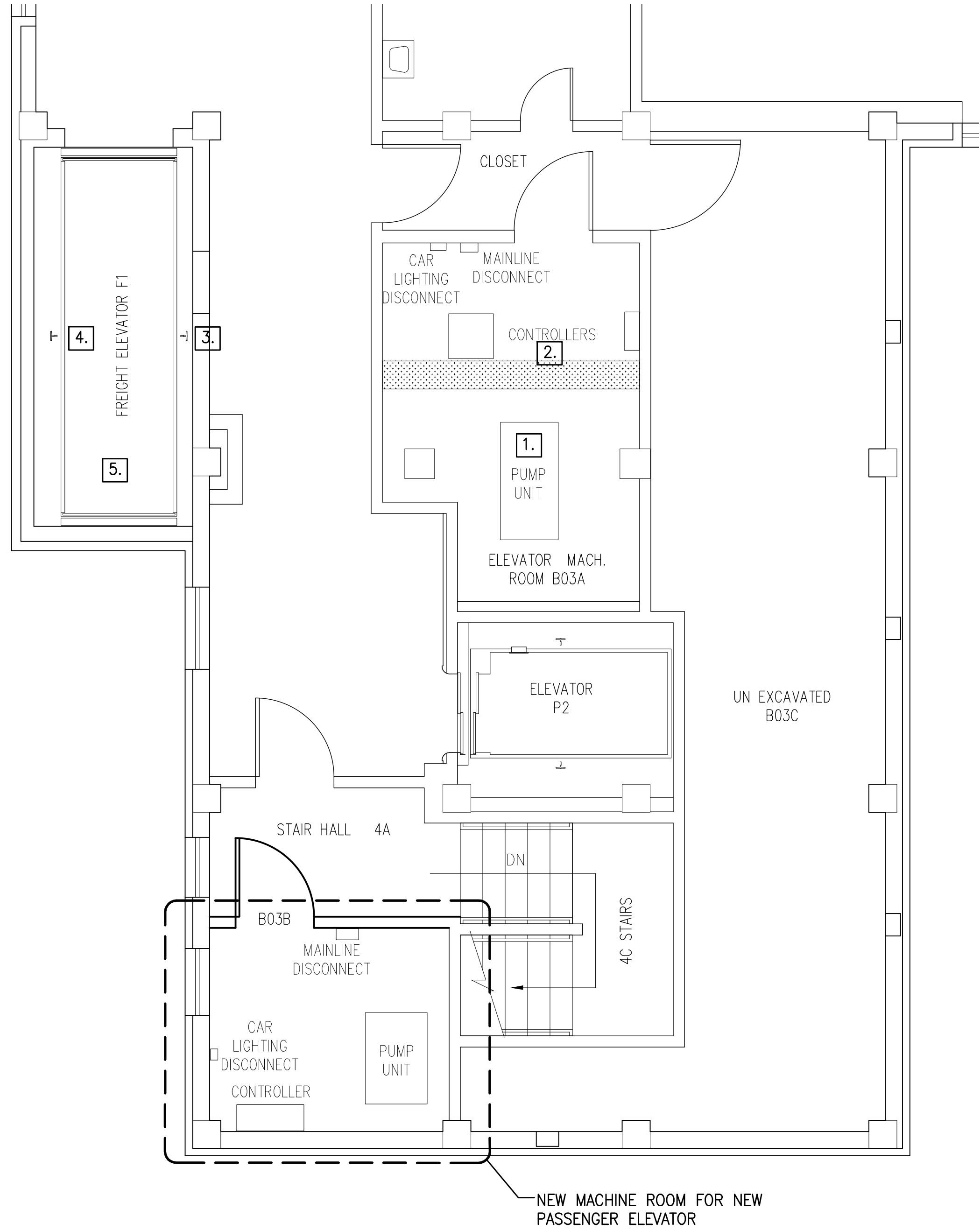
F
three-eighths inch = one foot

G
one-quarter inch = one foot

0
4
8
16
one-eighth inch = one foot



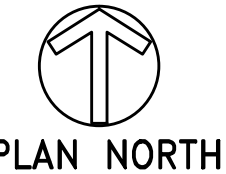
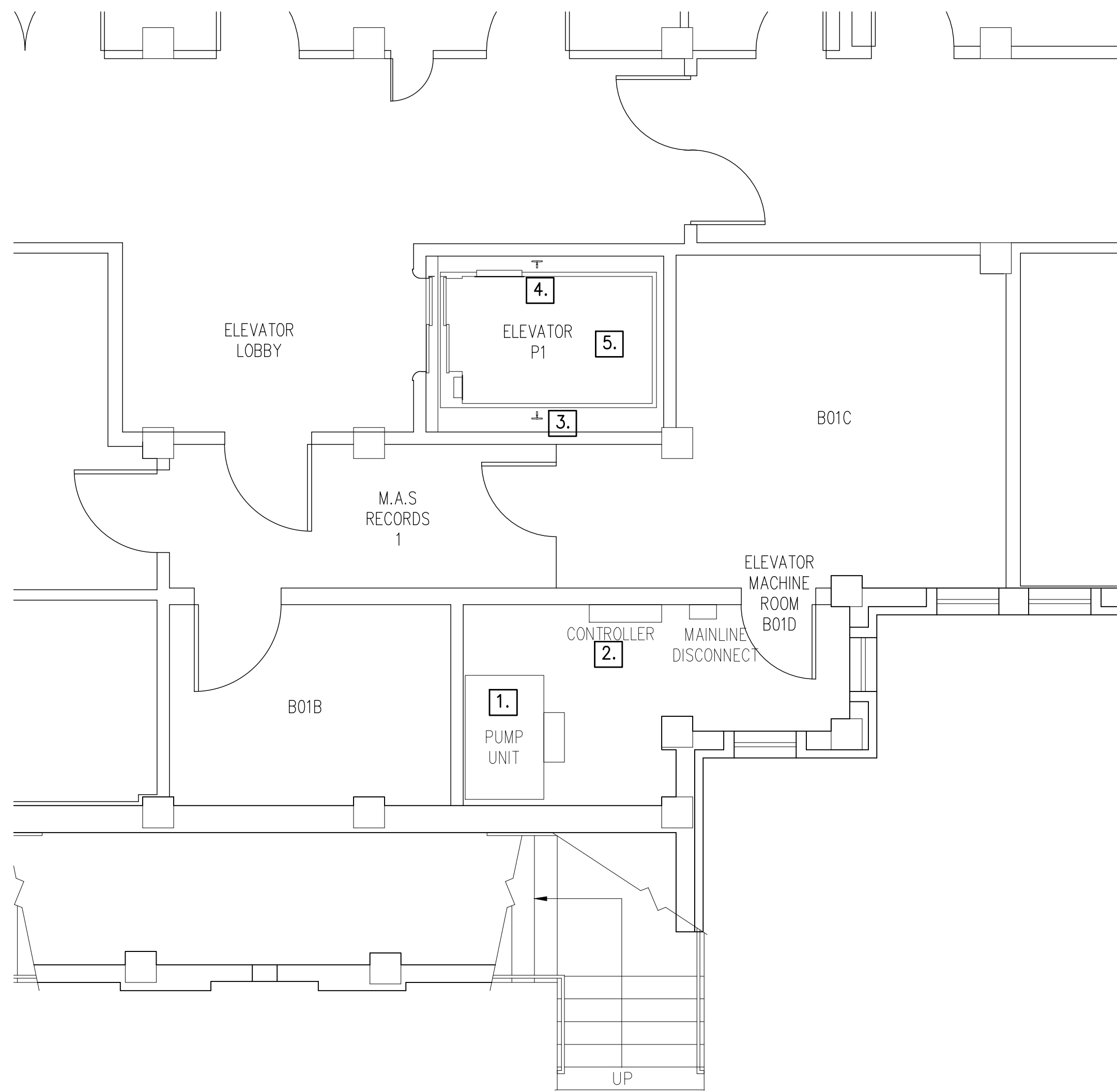
1
A101
EXISTING SUB BASEMENT
PART. FLOOR PLAN
SCALE: 1/4" = 1'-0"



4
A101
EXISTING BASEMENT
PART. FLOOR PLAN
SCALE: 1/4" = 1'-0"

1. REMOVE EXISTING PUMP UNIT AND SUPPLY PIPING.
2. REMOVE EXISTING CONTROLLER.
3. RETAIN EXISTING GUIDE RAILS.
4. REMOVE EXISTING GUIDES.
5. REMOVE CAR ENCLOSURE.

NOTE:
EXISTING MAIN PASSENGER ELEVATOR MACHINE ROOM
AND PROPOSED SPACE TO BE USED FOR NEW
ELEVATOR MACHINE ROOM CONTAIN PLUMBING
SYSTEMS THAT DO NOT COMPLY W/ BUILDING CODE.



2
A101
EXISTING BASEMENT
PART. FLOOR PLAN
SCALE: 1/4" = 1'-0"

Revisions	Date

Consultants
RICKERT ENGINEERING, Inc.
STRUCTURAL ENGINEERING
8813 WALTHAM WOODS ROAD, SUITE 301
BALTIMORE, MARYLAND 21234
410.663.5110 - FAX 410.663.5114

ROBERT L. SEYMOUR ASSOCIATES
AUTOMATIC TRANSPORT ENGINEERING
182 THOMAS JOHNSON DR. SUITE 200
FREDERICK, MARYLAND 21702
301.662.8112 - FAX 301.662.8117

**BURDETTE KOEHLER MURPHY
& ASSOCIATES, INC.**
MECHANICAL / ELECTRICAL CONSULTING ENGINEERING
1416 CLARKVIEW ROAD
BALTIMORE, MARYLAND 21209
410.323.0600 - FAX 410.377.2543

BUILDING COST CONSULTANTS, INC.
COST ESTIMATING
12917 - 30TH AVENUE
PLATTSMOUTH, NEBRASKA 68046
402.298.8260 - FAX 402.298.8260

Seal



ARCHITECTURE
PLANNING
ENGINEERING

2215 Conowingo Rd, Suite 100
Bel Air, Maryland 21015-1436
410.803.0009
fax 410.836.6611

Drawing Title ELEVATOR DEMOLITION PLANS
Approved: Chief Engineering Services
Approved: Medical Center Director

Project Title REPLACE BUILDING 9 ELEVATORS	Building Number 9	Checked CAJ	Drawn JSK
Location COATESVILLE, PENNSYLVANIA			

DELLC JOB NO. 120701D
Date 26, SEPTEMBER 2014
Project No. 542-08-110
DRAWING NO. VT101
Dwg. 3 Of xx



BID DOCUMENTS