

1  
2  
3  
4  
5  
6  
7  
8  
9

A  
three inches = one foot

B  
one and one-half inches = one foot

C  
one inch = one foot

D  
three-quarters inch = one foot

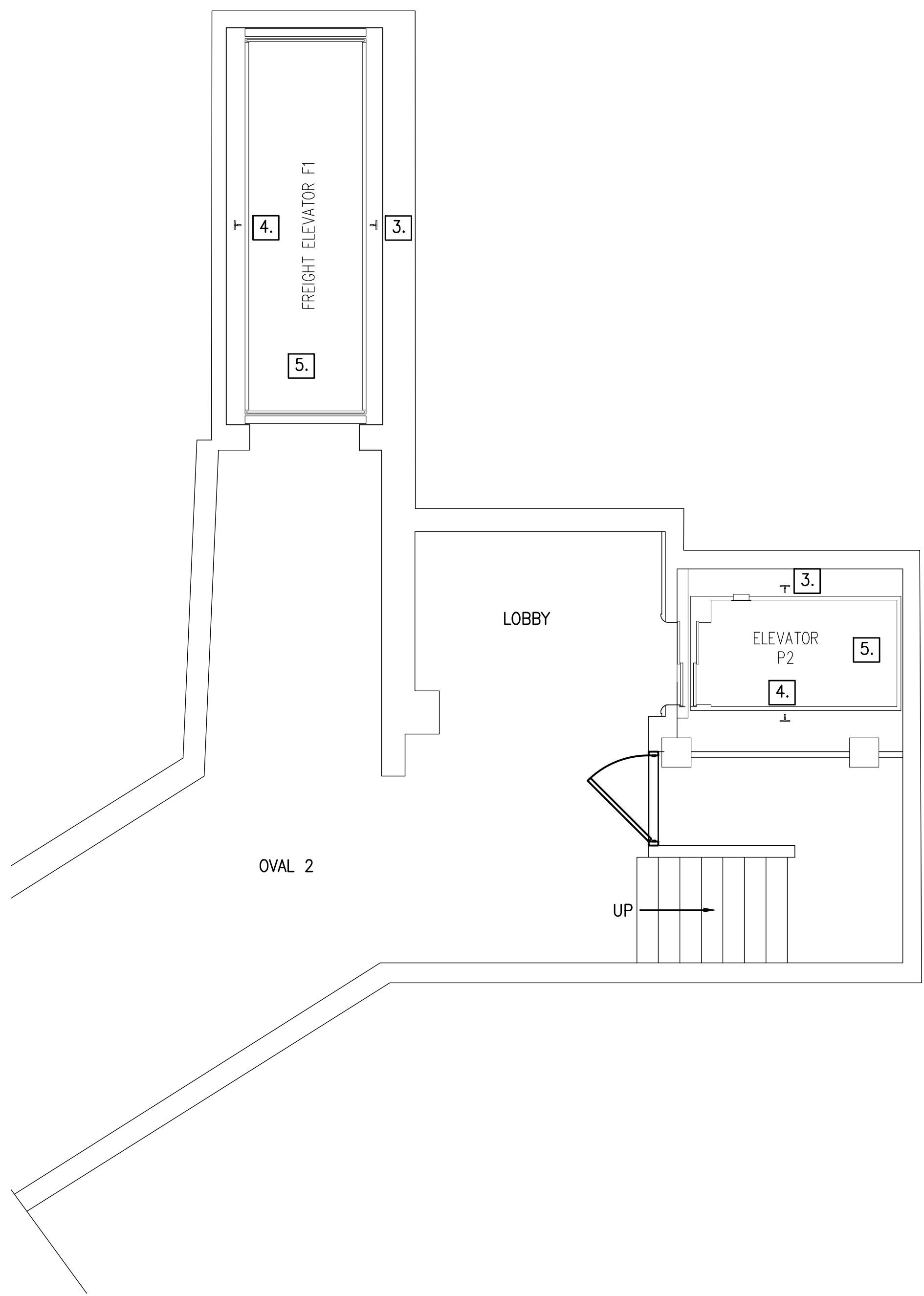
E  
one-half inch = one foot

F  
three-eighths inch = one foot

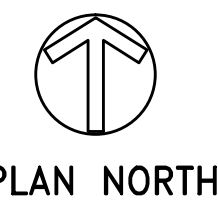
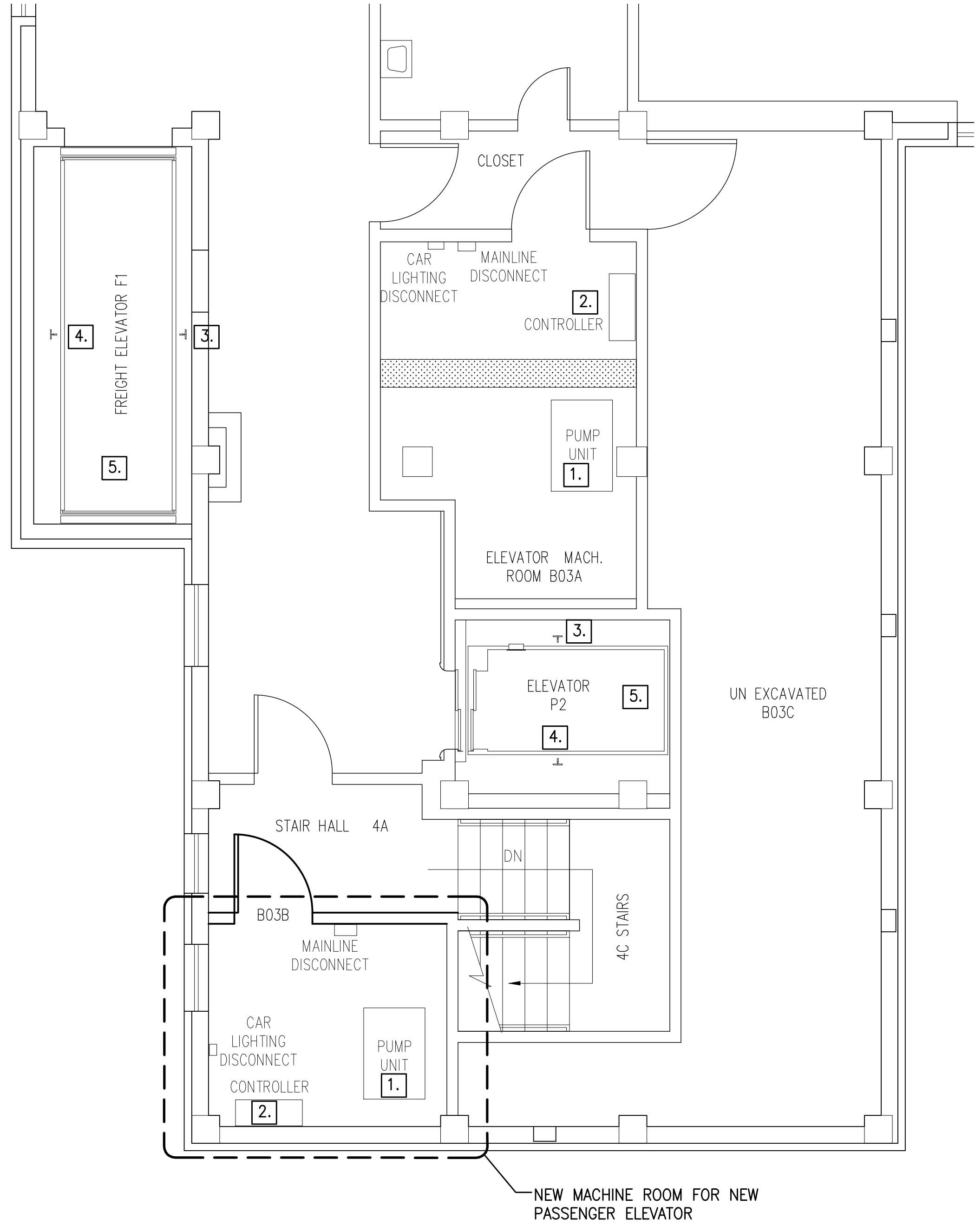
G  
one-quarter inch = one foot

0  
8  
4  
0

one-eighth inch = one foot

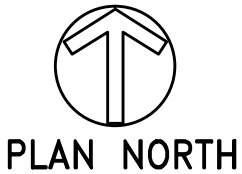
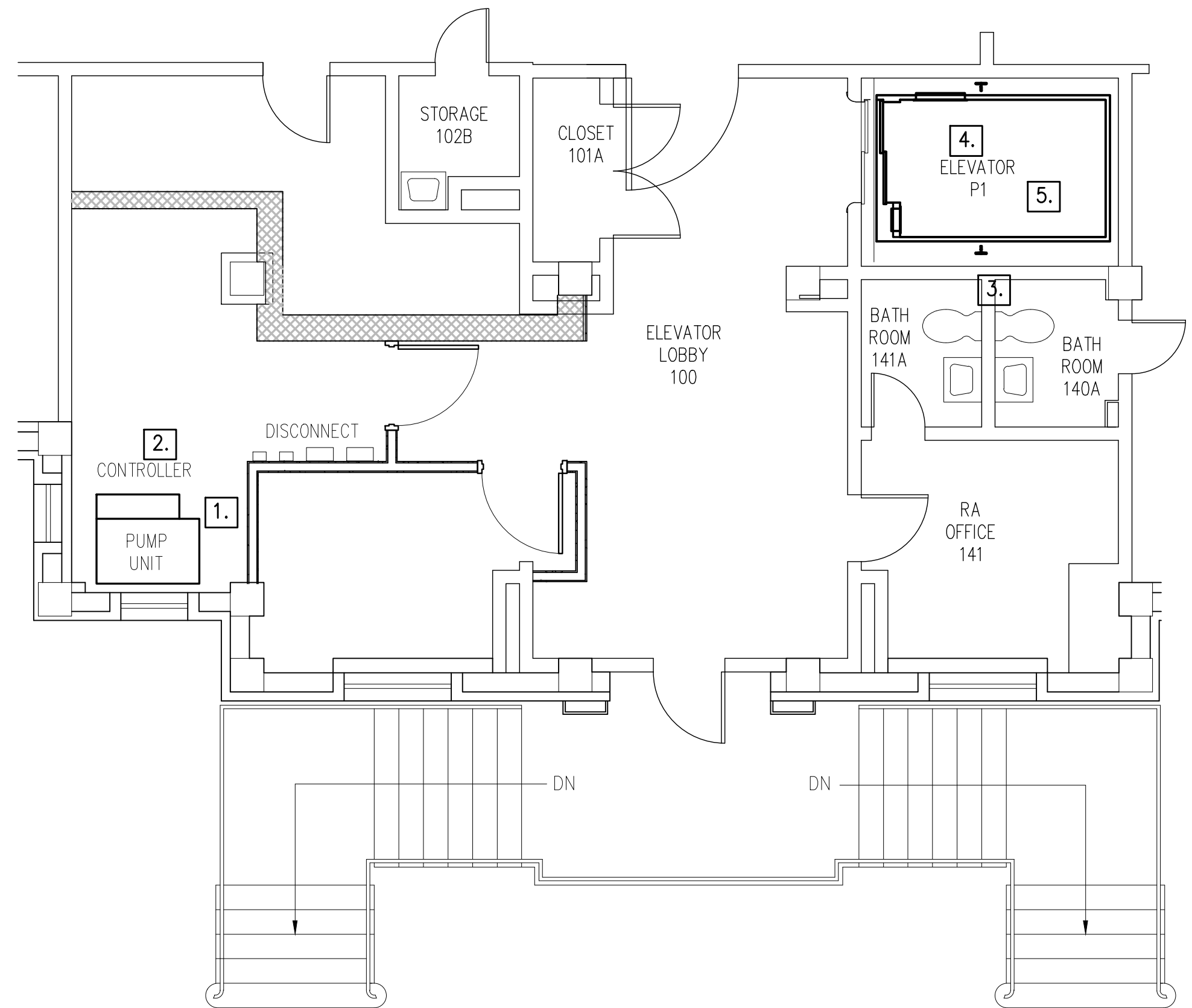


1  
A101  
NEW SUB BASEMENT  
PART. FLOOR PLAN  
SCALE: 1/4" = 1'-0"




4  
A101  
NEW BASEMENT  
PART. FLOOR PLAN  
SCALE: 1/4" = 1'-0"

1. PROVIDE PUMP UNIT AND SUPPLY PIPING.
2. PROVIDE CONTROLLER.
3. REFURBISH EXISTING GUIDE RAILS.
4. PROVIDE GUIDES.
5. PROVIDE CAR ENCLOSURE.



2  
A101  
NEW FIRST LEVEL  
PART. FLOOR PLAN  
SCALE: 1/4" = 1'-0"

				<div>Consultants</div> <div><b>RICKET ENGINEERING, Inc.</b></div> <div>STRUCTURAL ENGINEERING 8913 WALTHAM WOODS ROAD, SUITE 301 BALTIMORE, MARYLAND 21234 410.663.5110 — FAX 410.663.5114</div>		<div>BURDETTE KOEHLER MURPHY &amp; ASSOCIATES, INC.</div> <div>MECHANICAL / ELECTRICAL CONSULTING ENGINEERING 1416 CLARKVIEW ROAD BALTIMORE, MARYLAND 21209 410.323.0600 — FAX 410.377.2543</div>		<div>Seal</div>		<div><b>DERBY</b></div> <div></div> <div>2215 Conowingo Rd, Suite 100 Bel Air, Maryland 21015-1436 410.803.0009 fax 410.836.6611</div>		<div>ARCHITECTURE PLANNING ENGINEERING</div>		<div>Drawing Title</div> <div><b>ELEVATOR NEW WORK PLANS</b></div>		<div>Project Title</div> <div><b>REPLACE BUILDING 9 ELEVATORS</b></div>		<div>Date</div> <div><b>26, SEPTEMBER 2014</b></div>		<div>Project No.</div> <div><b>542-08-110</b></div>		<div>DEPARTMENT OF VETERANS AFFAIRS</div>	
				<div><b>ROBERT L. SEYMOUR ASSOCIATES</b></div> <div>AUTOMATIC TRANSPORT ENGINEERING 192 THOMAS JOHNSON DR., SUITE 200 FREDERICK, MARYLAND 21702 301.662.8112 — FAX 301.662.8117</div>		<div><b>BUILDING COST CONSULTANTS, INC.</b></div> <div>COST ESTIMATING 12917 — 30TH AVENUE PLATTSMOUTH, NEBRASKA 68048 402.298.8260 — FAX 402.298.8290</div>						<div>Approved: Chief Engineering Services</div>		<div>Building Number</div> <div><b>9</b></div>		<div>Checked</div> <div><b>CAJ</b></div>		<div>Drawn</div> <div><b>JSK</b></div>		<div>DRAWING NO.</div> <div><b>VT102</b></div>		<div>Dwg. <b>3</b> Of <b>xx</b></div>	
<div>Revisions</div>		<div>Date</div>								<div>Approved: Medical Center Director</div>		<div>Location</div> <div><b>COATESVILLE, PENNSYLVANIA</b></div>											