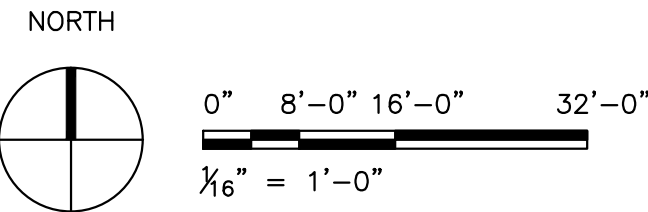
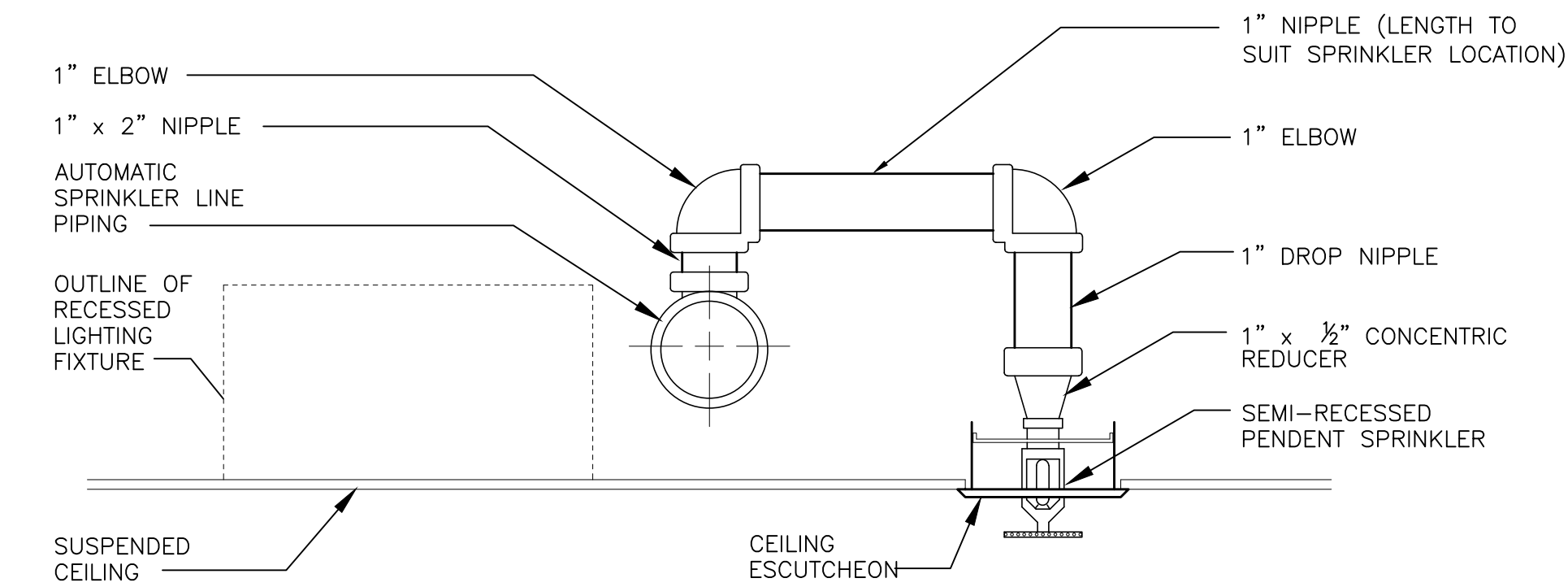


FIRST FLOOR FIRE PROTECTION PLAN
1/16" = 1'-0"



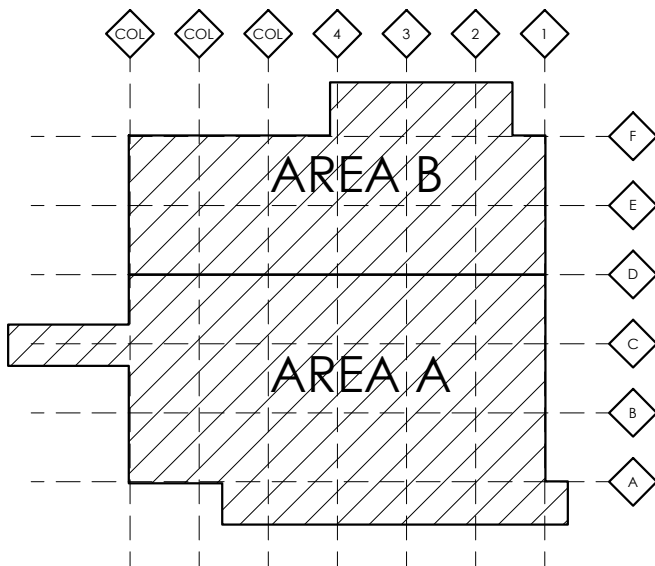
- FIRE PROTECTION NOTES:
- SEE SHEETS M-001 & M-002 FOR GENERAL NOTES, SYMBOLS, AND ABBREVIATIONS.
 - CONTRACTOR TO SURVEY FACILITY TO ESTABLISH (E) FIRE PROTECTION SYSTEM CONFIGURATION. CONTRACTOR TO PROVIDE HYDRAULIC CALCULATIONS FOR THE NEW DESIGN DENSITIES.
 - FIRE PROTECTION SYSTEM SHALL BE DESIGNED IN ACCORDANCE WITH APPLICABLE NFPA STANDARDS, INCLUDING NFPA 13 AND AUTHORITY HAVING JURISDICTION.
 - AREA OF NEW WORK: ALL OF BUILDING B-145.
 - REWORK FIRE PROTECTION IN AREAS OF NEW WORK TO ACCOMMODATE NEW PARTITIONS AND REVISED DENSITY.
 - REVISED DENSITY IN AREA OF NEW WORK SHALL BE AS FOLLOWS:
 - 0.20 GPM/SQ. FT. OVER THE HYDRAULICALLY MOST REMOTE 1,500 SQ. FT. IN "ORDINARY HAZARD, GROUP 2" AREAS INCLUDING:
 - MECH/ELEC ROOMS
 - STORAGE WAREHOUSE
 - LAUNDRY
 - 0.10 GPM/SQ. FT. OVER THE HYDRAULICALLY MOST REMOTE 1,500 SQ. FT. IN "LIGHT HAZARD" AREAS INCLUDING:
 - OFFICE
 - TOILET ROOMS
 - ALL OTHER SPACES, UNLESS NOTED OTHERWISE
 - MAINTAIN PROTECTION IN EXISTING AREAS ADJACENT TO AREA OF WORK THROUGHOUT CONSTRUCTION.
 - UNLESS NOTED OTHERWISE: SPRINKLER HEADS IN AREAS WITH HARD CEILINGS SHALL BE CONCEALED HEADS. SPRINKLER HEADS IN WHITE CEILINGS SHALL HAVE WHITE COVER PLATES. SPRINKLER HEADS IN CEILINGS OTHER THAN WHITE SHALL HAVE CHROME COVER PLATES. SPRINKLER HEADS IN AREAS WITH LAY-IN CEILINGS SHALL BE SEMI-RECESSED WITH WHITE ESCUTCHEON. SPRINKLER HEADS SHALL BE CENTERED IN 2'x2' CEILING TILES, OR CENTERED IN THE HALF-PANEL OF 4'x2' CEILING TILES. SPRINKLERS IN AREAS OF EXPOSED CONSTRUCTION SHALL BE STANDARD UPRIGHT. COORDINATE WITH ARCHITECTURAL TRADES.
 - PROVIDE 1" AUX DRAIN VALVES WITH HOSE END CONNECTIONS WHERE TRAPPED SECTIONS OF PIPING ARE INSTALLED.
 - COORDINATE THE INSTALLATION OF FIRE PROTECTION INCLUDING SUPPORT SYSTEMS WITH EXISTING SYSTEMS AND SUPPORTS AND OTHER BUILDING TRADES, EQUIPMENT AND SYSTEMS TO AVOID INTERFERENCES.
 - FIRE PROTECTION SYSTEMS, COMPONENTS AND LOCATIONS SHALL BE COORDINATED THOROUGHLY WITH OTHER TRADES PRIOR TO THE START OF INSTALLATION. COORDINATE INSTALLATION WITH WORK OF OTHER MECHANICAL, ARCHITECTURAL AND ELECTRICAL TRADES.
 - OFFSET SPRINKLER PIPING AROUND OBSTRUCTIONS AND PROVIDE REQUIRED CLEARANCE FROM OBSTRUCTIONS FOR ALL AUTOMATIC SPRINKLERS IN ACCORDANCE WITH NFPA 13.
 - INSTALL SPRINKLERS UNDER OBSTRUCTIONS 48 INCHES IN WIDTH AND GREATER IN ACCORDANCE WITH NFPA.
 - ADJUST FIRE PROTECTION PIPING IN MECHANICAL ROOM 108E. CURRENT FIRE PROTECTION PIPING IS LOCATED WITHIN THE NEC. REQUIRED WORKING CLEARANCES OF THE ELECTRICAL PANELS. SEE IMAGE ON THIS SHEET. ELECTRICAL PANEL WILL BE REPLACED. ADJUST FIRE PROTECTION PIPING TO COMPLY WITH NEC AND COORDINATE WITH ELECTRICAL TRADES.




1 SEMI-RECESSED PENDENT SPRINKLER
NOT TO SCALE



EXISTING FIRE PROTECTION
MECHANICAL ROOM 108E
NOT TO SCALE



FULLY SPRINKLERED CONSTRUCTION DOCUMENTS

		CONSULTANTS:				ARCHITECT/ENGINEERS:		Project Title		Project Number		Office of Construction and Facilities Management	
[RFI1]		[01/04/16]				<div><div>Albert Kahn Associates, Inc. Albert Kahn Building 7430 Second Ave. Detroit, Michigan 48202-2798 Albert Kahn Associates, Inc. is a member of the Albert Kahn Family of Companies. © 2007 ALBERT KAHN JOB # 0390-ED000</div></div>		FIRST FLOOR FIRE PROTECTION PLAN		RENOVATE B-145			
ISSUE 007 - BID UPDATE		07/24/15						Approved		Location		Building Number	
ISSUE 006 - BID		06/12/15						J. COLE		BATTLE CREEK, MICHIGAN		B-145	
ISSUE 005 - CD OWNER REVIEW (REVISED)		02/13/15										Drawing Number	
ISSUE 004 - CD OWNER REVIEW		11/20/14										FP100	
ISSUE 003 - SD-DD OWNER REVIEW		10/15/14										Dwg. 29 of 78	
Revisions		Date										Department of Veterans Affairs	