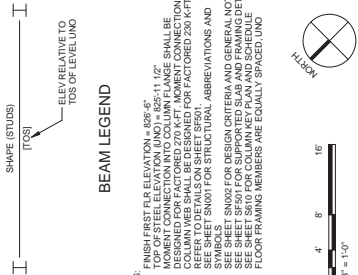


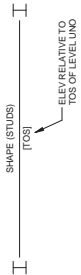
FIRST FLOOR FRAMING PLAN  
1/8" = 1'-0"



CONSTRUCTION DOCUMENTS  
FULLY SPRINKLERED

<div>KEY PLAN</div> <div><div>AREA OF PROJECT</div></div>		<div>ARCHITECT/ENGINEERS:</div> <div><b>Kahn</b></div> <div>Albert Kahn Associates, Inc. Albert Kahn Building 7430 E. Kalamazoo Detroit, Michigan 48202-2798 Albert Kahn Associates, Inc. is a member of the Albert Kahn Family of Companies. ALBERT KAHN JOB # 03762-0000 © 2007</div>		<div>Drawing Title</div> <div>FIRST FLOOR FRAMING PLAN</div>		<div>Project Title</div> <div>DEPARTMENT OF VETERANS AFFAIRS BUILD OUT CLINICS</div>		<div>Project Number</div> <div>506-327</div>		<div>Building Number</div> <div>1-W</div>		<div>Drawing Number</div> <div>SF101</div>		<div>Office of Construction and Facilities Management</div> <div>Department of Veterans Affairs</div>																		
<div>ISSUE 004 - BID</div> <div>02-05-15</div>		<div>ISSUE 003 - CD OWNER REVIEW</div> <div>10-31-14</div>		<div>ISSUE 002 - DD OWNER REVIEW</div> <div>05-30-14</div>		<div>DD - ESTIMATE</div> <div>04-30-14</div>		<div>Approved:</div> <div>GMC</div>		<div>Date</div> <div>02/05/15</div>		<div>Checked</div> <div>GMC</div>		<div>Drawn</div> <div>CK</div>		<div>Dwg. 17 of 189</div>																
<div>Revisions:</div> <table><tr><td></td><td></td><td></td><td></td><td></td><td></td><td></td><td></td><td></td><td></td><td></td><td></td><td></td><td></td><td></td><td></td><td></td></tr></table>																																

VA FORM 08-6231



1. FINISH SECOND FLOOR ELEVATION = 838'-5".
2. TOP OF STEEL ELEVATION (UNO) = 837'-10 1/2"
3. MOMENT CONNECTION INTO COLUMN FLANGE SHALL BE DESIGNED FOR  
DESIGNED FOR 4.0 TIMES CONNECTION TO COLUMN WEB SHALL BE  
DESIGNED FOR 1.0 TIMES CONNECTION TO COLUMN WEB SHALL BE  
DESIGNED FOR 1.0 TIMES CONNECTION TO COLUMN WEB SHALL BE
4. SEE SHEET S0001 FOR STRUCTURAL ABBREVIATIONS AND SYMBOLS
5. SEE SHEET S0002 FOR DESIGN CRITERIA AND GENERAL NOTES
6. SEE SHEET SF501 FOR SUPPORTED SLAB AND FRAMING DETAILS
7. SEE SHEET SF610 FOR COLUMN KEY PLAN AND SCHEDULE
8. FLOOR FRAMING MEMBERS ARE EQUALLY SPACED, UNO.



1/8" = 1'-0"

**SECOND FLOOR FRAMING PLAN**

[illegible]

**Kahn**

**Albert Kahn Associates, Inc.**  
Albert Kahn Building  
7430 Second Ave.  
Detroit, Michigan 48202-2798  
Telephone: 313.487.1000  
Fax: 313.487.1001  
E-mail: [info@albertkahn.com](mailto:info@albertkahn.com)  
www.albertkahn.com  
© 2007  
ALBERT KAHN JOB # 03195-00.000

**MIDWESTERN CONSULTING**

 Civil, Environmental and  
Transportation Engineers  
Planners, Surveyors  
Landscape Architects

3815 Plaza Drive  
Ann Arbor, Michigan 48108  
Phone: 734.995.0200  
Fax: 734.995.0699

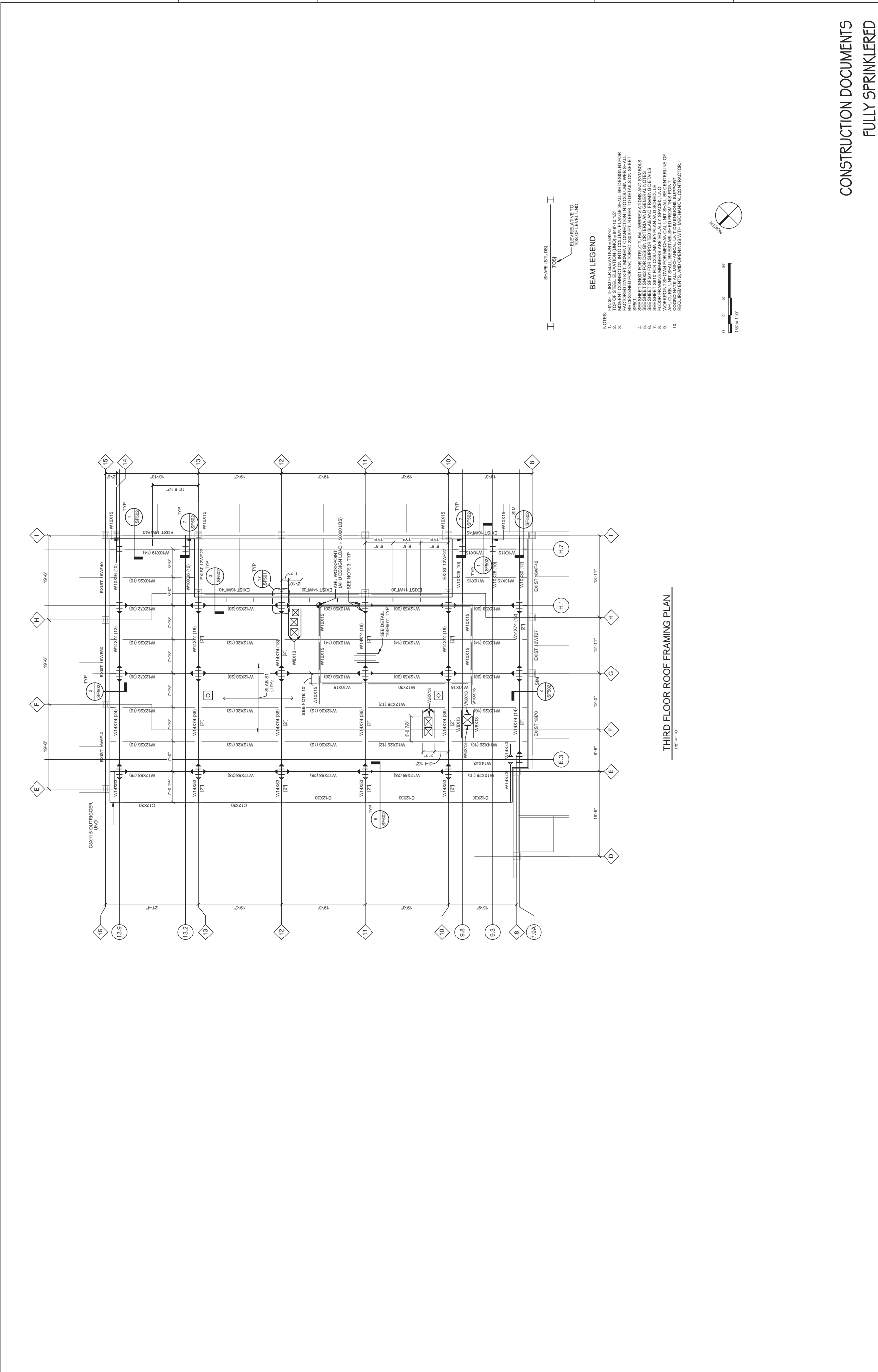
Approved: GWC		Location ANN ARBOR, MICHIGAN
		WE LEARN AT FAIR BUILD OUT CLINICS

Drawn	CK
Checked	GWC

SF102  
Dwg. 18 of 1

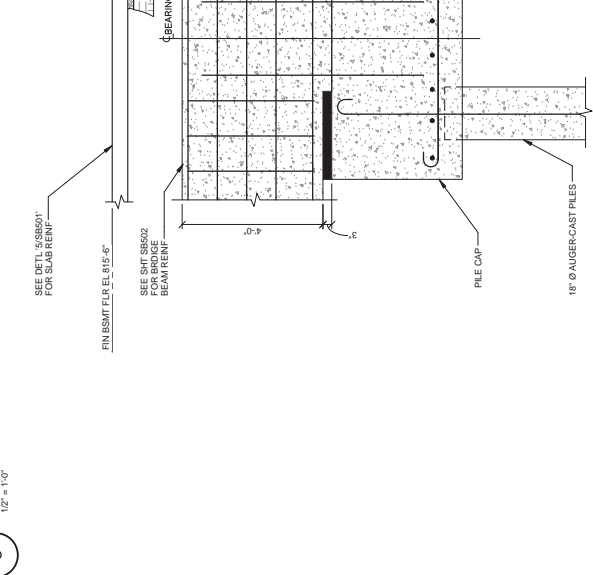
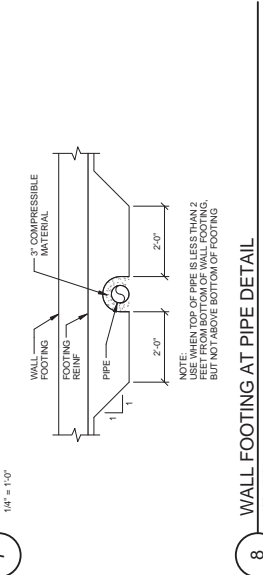
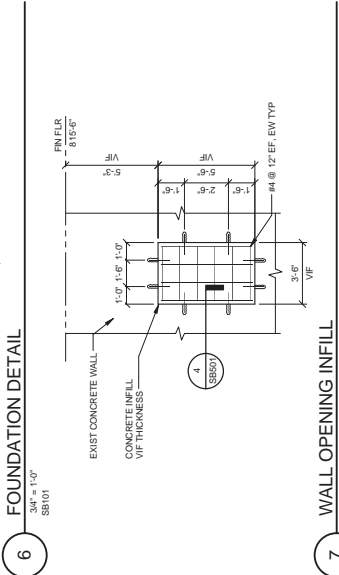
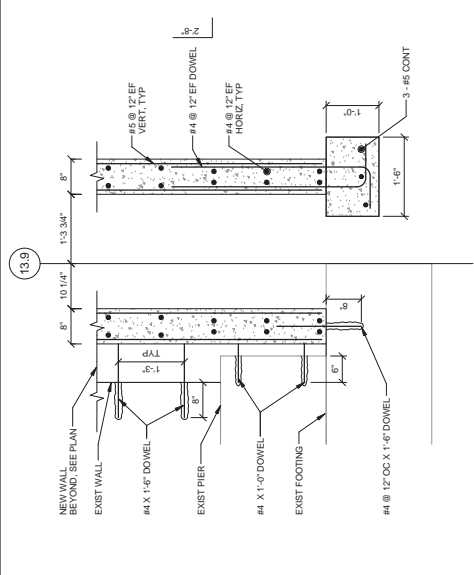


Department of  
Veterans Affairs

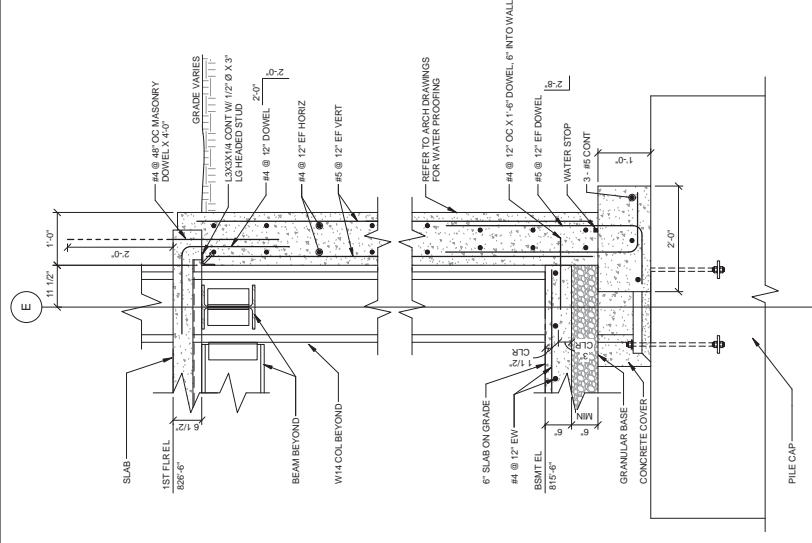


CONSTRUCTION DOCUMENTS  
FULLY SPRINKLERED

																																																																																																																																																																																																																																																																																																																																																																																																																																																																																																																																																																																																																																																																																																																																																																																																																																																																																																																																																																																																																																																																																																																																																																																																																				</	
--	--	--	--	--	--	--	--	--	--	--	--	--	--	--	--	--	--	--	--	--	--	--	--	--	--	--	--	--	--	--	--	--	--	--	--	--	--	--	--	--	--	--	--	--	--	--	--	--	--	--	--	--	--	--	--	--	--	--	--	--	--	--	--	--	--	--	--	--	--	--	--	--	--	--	--	--	--	--	--	--	--	--	--	--	--	--	--	--	--	--	--	--	--	--	--	--	--	--	--	--	--	--	--	--	--	--	--	--	--	--	--	--	--	--	--	--	--	--	--	--	--	--	--	--	--	--	--	--	--	--	--	--	--	--	--	--	--	--	--	--	--	--	--	--	--	--	--	--	--	--	--	--	--	--	--	--	--	--	--	--	--	--	--	--	--	--	--	--	--	--	--	--	--	--	--	--	--	--	--	--	--	--	--	--	--	--	--	--	--	--	--	--	--	--	--	--	--	--	--	--	--	--	--	--	--	--	--	--	--	--	--	--	--	--	--	--	--	--	--	--	--	--	--	--	--	--	--	--	--	--	--	--	--	--	--	--	--	--	--	--	--	--	--	--	--	--	--	--	--	--	--	--	--	--	--	--	--	--	--	--	--	--	--	--	--	--	--	--	--	--	--	--	--	--	--	--	--	--	--	--	--	--	--	--	--	--	--	--	--	--	--	--	--	--	--	--	--	--	--	--	--	--	--	--	--	--	--	--	--	--	--	--	--	--	--	--	--	--	--	--	--	--	--	--	--	--	--	--	--	--	--	--	--	--	--	--	--	--	--	--	--	--	--	--	--	--	--	--	--	--	--	--	--	--	--	--	--	--	--	--	--	--	--	--	--	--	--	--	--	--	--	--	--	--	--	--	--	--	--	--	--	--	--	--	--	--	--	--	--	--	--	--	--	--	--	--	--	--	--	--	--	--	--	--	--	--	--	--	--	--	--	--	--	--	--	--	--	--	--	--	--	--	--	--	--	--	--	--	--	--	--	--	--	--	--	--	--	--	--	--	--	--	--	--	--	--	--	--	--	--	--	--	--	--	--	--	--	--	--	--	--	--	--	--	--	--	--	--	--	--	--	--	--	--	--	--	--	--	--	--	--	--	--	--	--	--	--	--	--	--	--	--	--	--	--	--	--	--	--	--	--	--	--	--	--	--	--	--	--	--	--	--	--	--	--	--	--	--	--	--	--	--	--	--	--	--	--	--	--	--	--	--	--	--	--	--	--	--	--	--	--	--	--	--	--	--	--	--	--	--	--	--	--	--	--	--	--	--	--	--	--	--	--	--	--	--	--	--	--	--	--	--	--	--	--	--	--	--	--	--	--	--	--	--	--	--	--	--	--	--	--	--	--	--	--	--	--	--	--	--	--	--	--	--	--	--	--	--	--	--	--	--	--	--	--	--	--	--	--	--	--	--	--	--	--	--	--	--	--	--	--	--	--	--	--	--	--	--	--	--	--	--	--	--	--	--	--	--	--	--	--	--	--	--	--	--	--	--	--	--	--	--	--	--	--	--	--	--	--	--	--	--	--	--	--	--	--	--	--	--	--	--	--	--	--	--	--	--	--	--	--	--	--	--	--	--	--	--	--	--	--	--	--	--	--	--	--	--	--	--	--	--	--	--	--	--	--	--	--	--	--	--	--	--	--	--	--	--	--	--	--	--	--	--	--	--	--	--	--	--	--	--	--	--	--	--	--	--	--	--	--	--	--	--	--	--	--	--	--	--	--	--	--	--	--	--	--	--	--	--	--	--	--	--	--	--	--	--	--	--	--	--	--	--	--	--	--	--	--	--	--	--	--	--	--	--	--	--	--	--	--	--	--	--	--	--	--	--	--	--	--	--	--	--	--	--	--	--	--	--	--	--	--	--	--	--	--	--	--	--	--	--	--	--	--	--	--	--	--	--	--	--	--	--	--	--	--	--	--	--	--	--	--	--	--	--	--	--	--	--	--	--	--	--	--	--	--	--	--	--	--	--	--	--	--	--	--	--	--	--	--	--	--	--	--	--	--	--	--	--	--	--	--	--	--	--	--	--	--	--	--	--	--	--	--	--	--	--	--	--	--	--	--	--	--	--	--	--	--	--	--	--	--	--	--	--	--	--	--	--	--	--	--	--	--	--	--	--	--	--	--	--	--	--	--	--	--	--	--	--	--	--	--	--	--	--	--	--	--	--	--	--	--	--	--	--	--	--	--	--	--	--	--	--	--	--	--	--	--	--	--	--	--	--	--	--	--	--	--	--	--	--	--	--	--	--	--	--	--	--	--	--	--	--	--	--	--	--	--	--	--	--	--	--	--	--	--	--	--	--	--	--	--	--	--	--	--	--	--	--	--	--	--	--	--	--	--	--	--	--	--	--	--	--	--	--	--	--	--	--	--	--	--	--	--	--	--	--	--	--	--	--	--	--	--	--	--	--	--	--	--	--	--	--	--	--	--	--	--	--	--	--	--	--	--	--	--	--	--	--	--	--	--	--	--	--	--	--	--	--	--	--	--	--	--	--	--	--	--	--	--	--	--	--	--	--	--	--	--	--	--	--	--	--	--	--	--	--	--	--	--	--	--	--	--	--	--	--	--	--	--	--	--	--	--	--	--	--	--	--	--	--	--	--	--	--	--	--	--	--	--	--	--	--	--	--	--	--	--	--	--	----	--

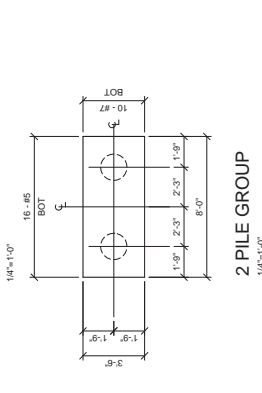
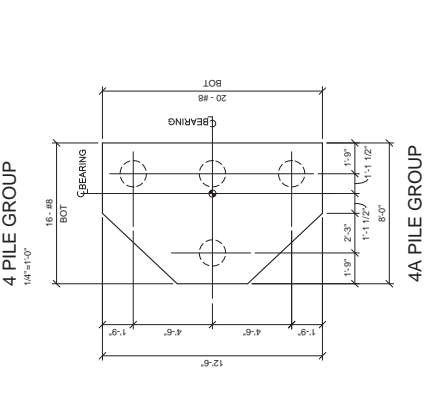
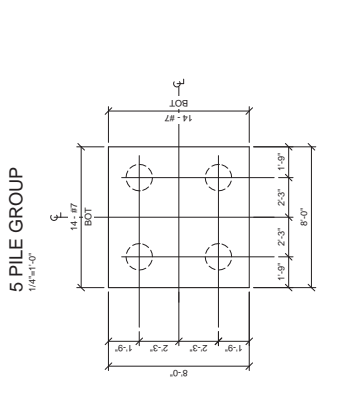
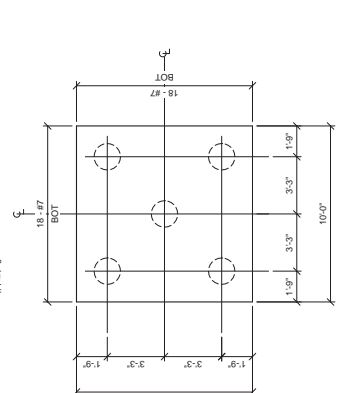
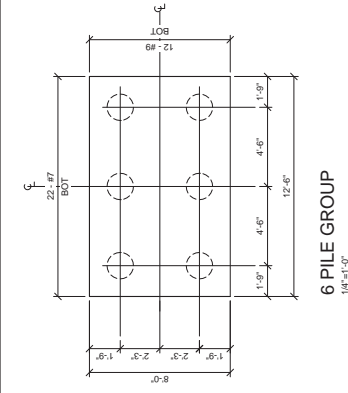
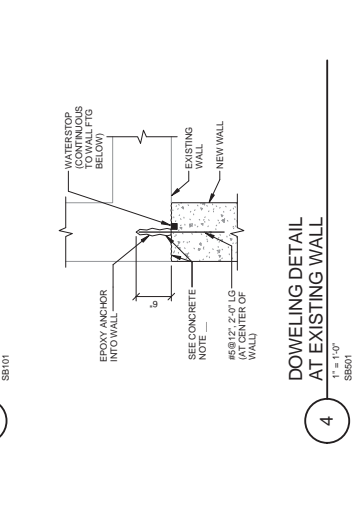
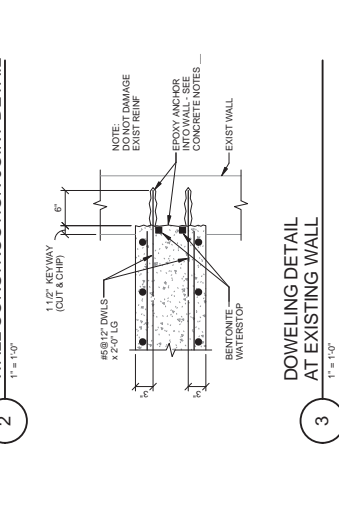
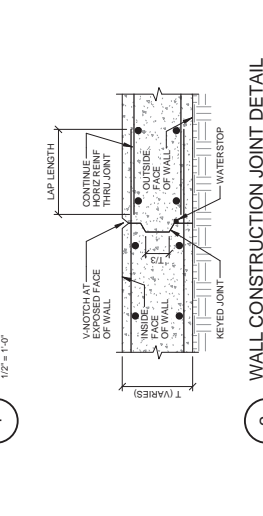
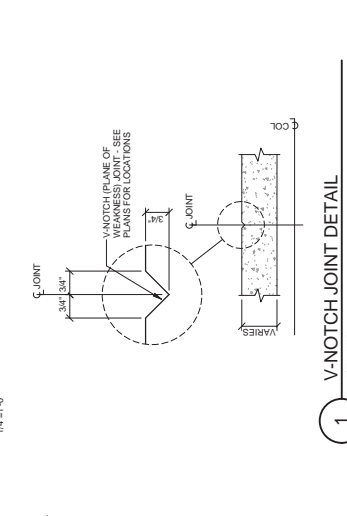
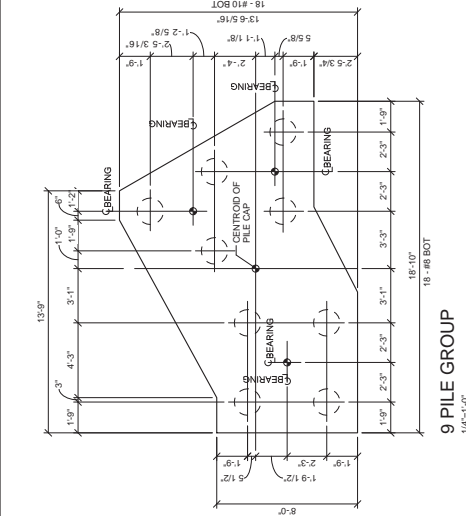


9 MONOLITHIC BRIDGE BEAM AND PILE CAP  
1/2" = 1'-0"  
SB801

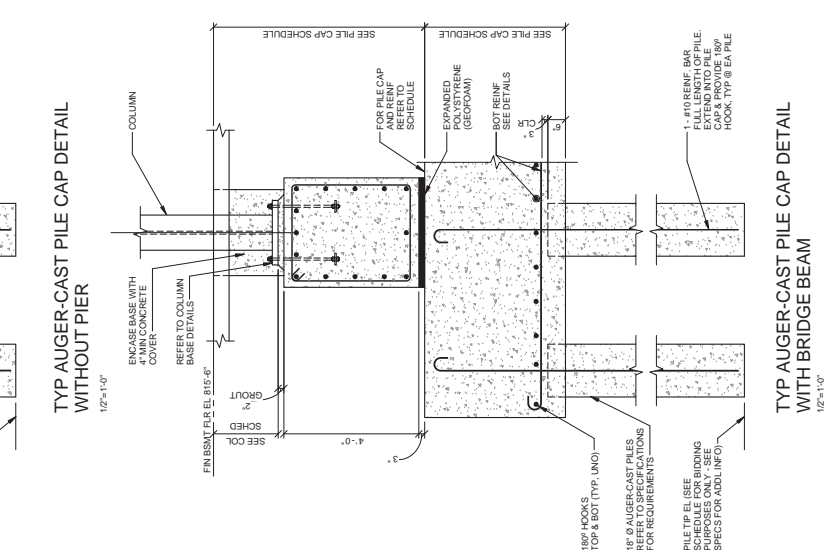
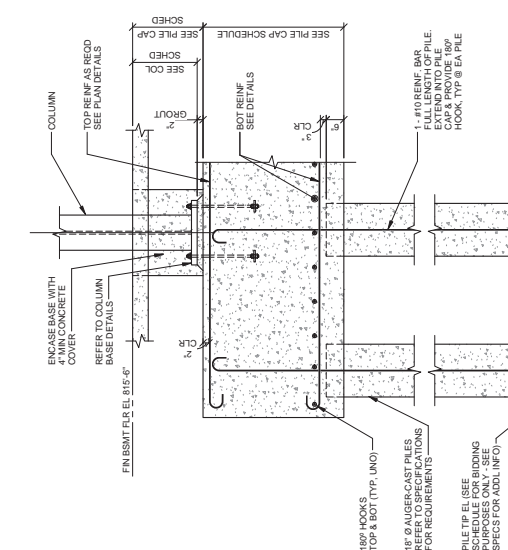


NOTES:  
1. 1ST FLOOR AND BSMT FLOOR SLABS SHALL BE INSTALLED PRIOR TO BACKFILLING AGAINST WALL.

5 RETAINING WALL  
3/4" = 1'-0"  
SB801



AUGER-CAST PILE CAP SCHEDULE						
MARK	NUMBER OF PILES PER GROUP	PILE CAP THICKNESS (INCHES)	AS DESIGNED		DISTANCE 85% FLR TEL BSMT FLR TEL (BID PURPOSES 810'-4" TO TOP OF FLR CAP ONLY)	REMARKS
			CUT OFF (INCHES)	EL (FT)		
APC1	6	48	810'-0"	770'-0"	-2'-0"	-SEE DETAIL 6 PILE GROUP THIS SHEET
APC2	5	48	810'-0"	770'-0"	-2'-0"	-SEE DETAIL 5 PILE GROUP THIS SHEET
APC3 APC3A	4	48	810'-0" 805'-9"	770'-0"	-2'-0" -6'-3"	-SEE DETAIL 4 PILE GROUP THIS SHEET
APC4	2	48	805'-9"	770'-0"	-6'-3"	-SEE DETAIL 2 PILE GROUP THIS SHEET
APC5	4	48	805'-9"	770'-0"	-6'-3"	-SEE DETAIL 4A PILE GROUP THIS SHEET
APC6	9	48	805'-9"	770'-0"	-6'-3"	-SEE DETAIL 9 PILE GROUP THIS SHEET



CONSTRUCTION DOCUMENTS  
FULLY SPRINKLERED

Project Title <b>DEPARTMENT OF VETERANS AFFAIRS BUILD OUT CLINICS</b>		Project Number <b>506-327</b>		Office of Construction and Facilities Management	
Drawing Title <b>FOUNDATION &amp; AUGER-CAST PILE CAP SCHEDULE &amp; DETAILS</b>		Building Number <b>1-W</b>		Department of Veterans Affairs	
Approved: <b>GMC</b>		Drawing Number <b>SB501</b>		Dwg. 20 of 189	
Location <b>ANN ARBOR, MICHIGAN</b>		Checked <b>GMC</b>		Drawn <b>CK</b>	
Date <b>02/05/15</b>		Title <b>SB501</b>		Dwg. 20 of 189	

**MIDWESTERN CONSULTING**

9815 Plaza Drive  
Ann Arbor, Michigan 48108  
Phone: 734.995.0200  
Fax: 734.995.0599

**ARCHITECT/ENGINEERS:**

**Albert Kahn Associates, Inc.**

Albert Kahn Building  
Detroit, Michigan 48202-2798  
Albert Kahn Associates, Inc. is a member of the Albert Kahn Family of Companies.  
© 2007  
**ALBERT KAHN JOB # 0376240300**

**KEY PLAN**

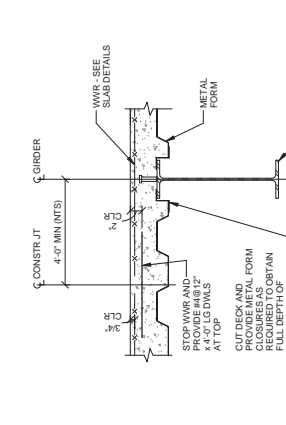
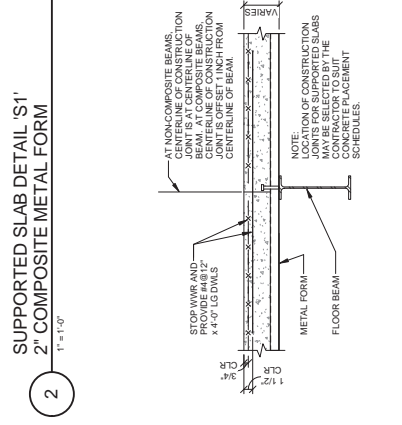
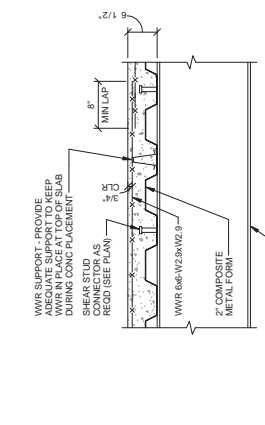
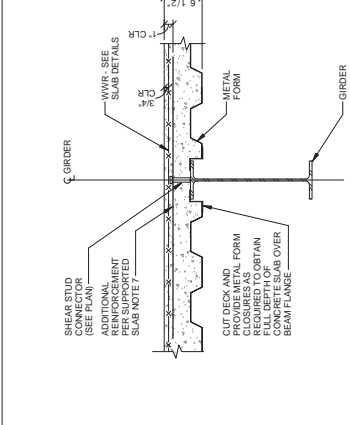
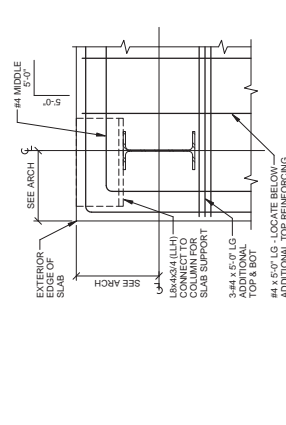
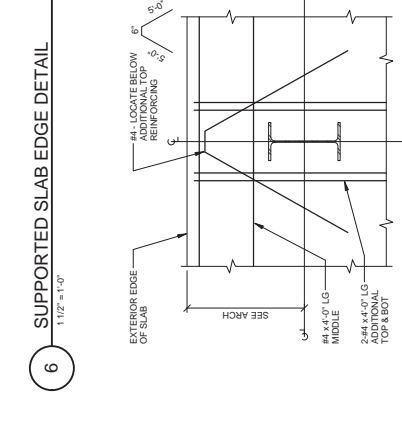
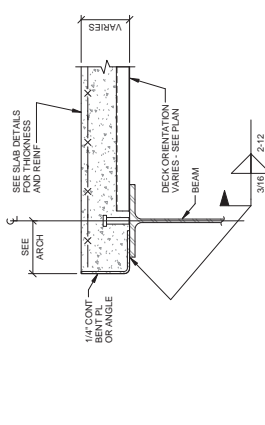
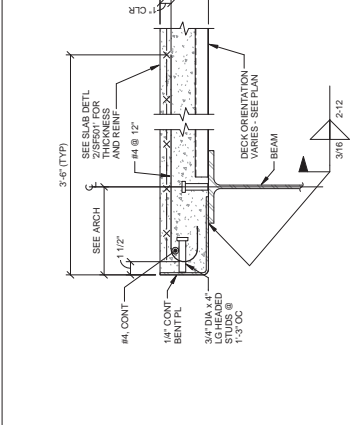
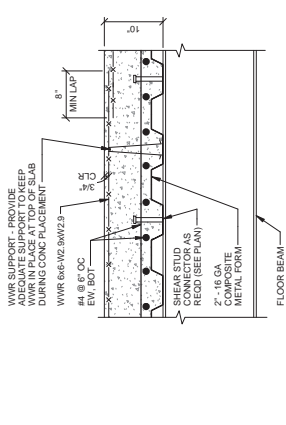
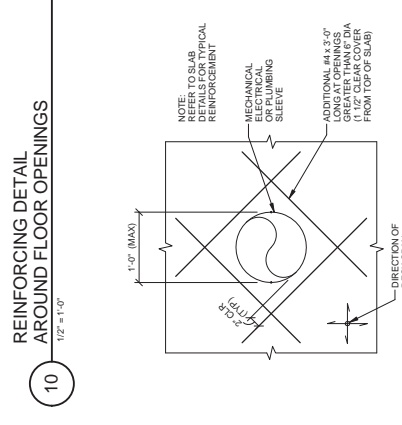
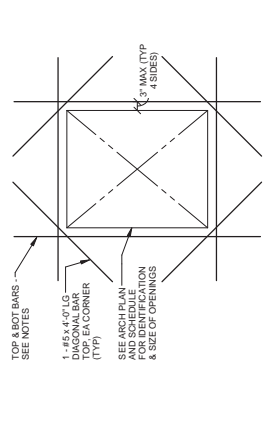
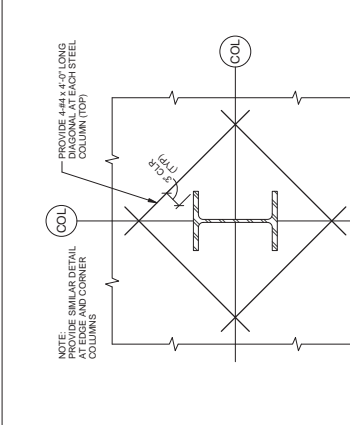
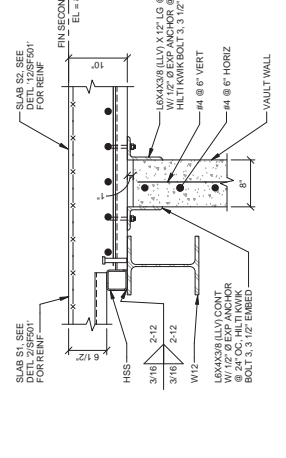
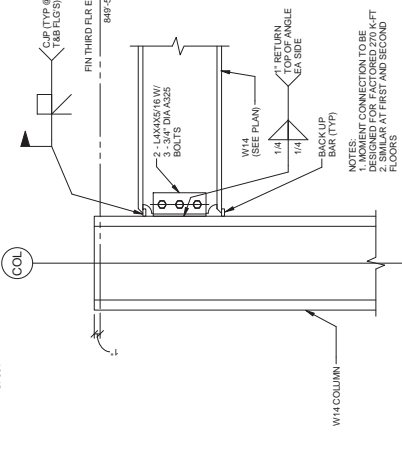
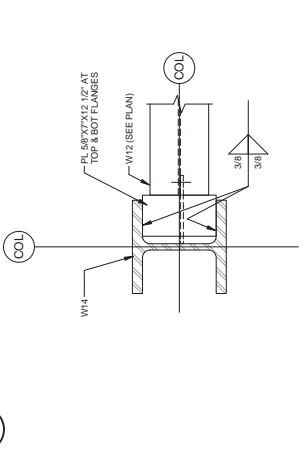
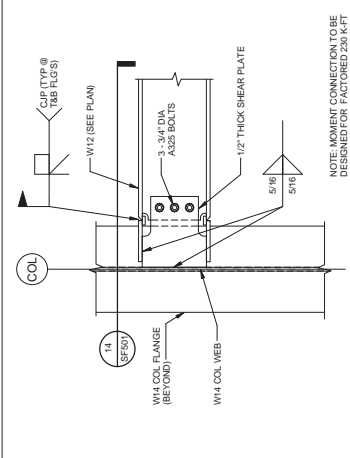
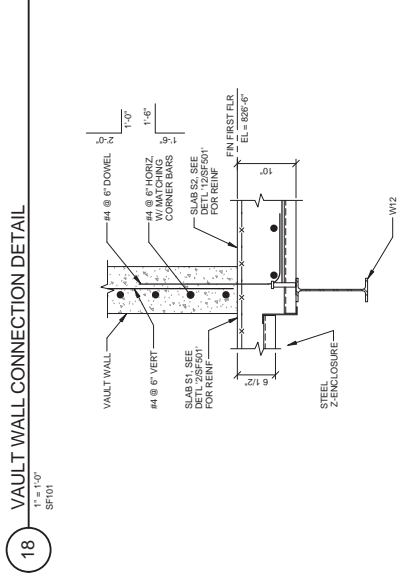
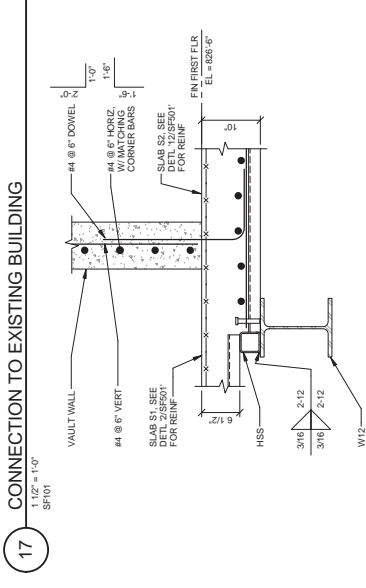
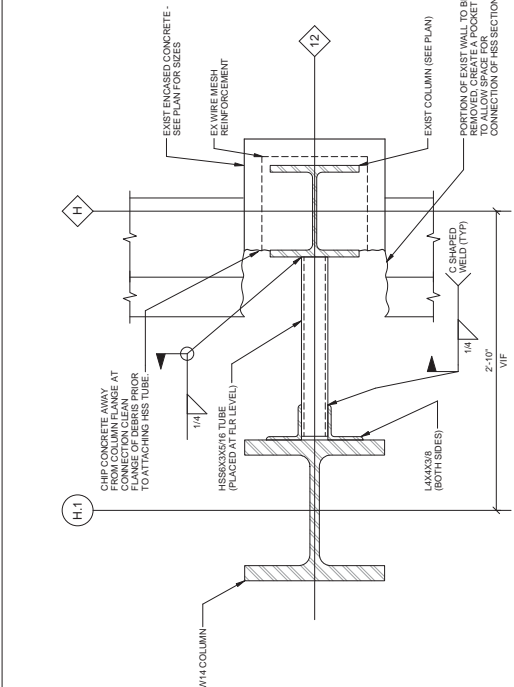
AREA OF PROJECT

ISSUE 004 - BID	02-05-15
ISSUE 003 - CD OWNER REVIEW	10-31-14
ISSUE 002 - CD OWNER REVIEW	05-30-14
DD - ESTIMATE	04-30-14

Revisions:

Revisions:	Date
------------	------

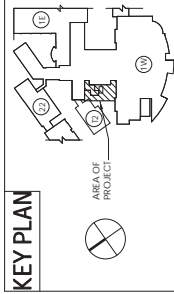
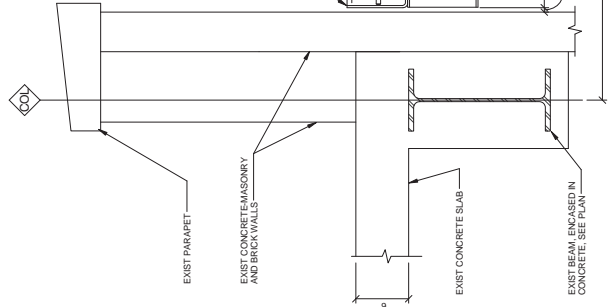
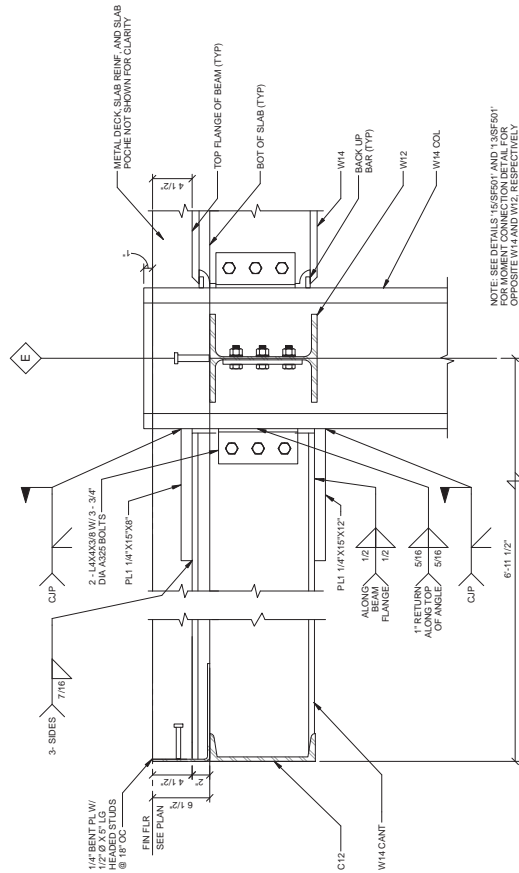
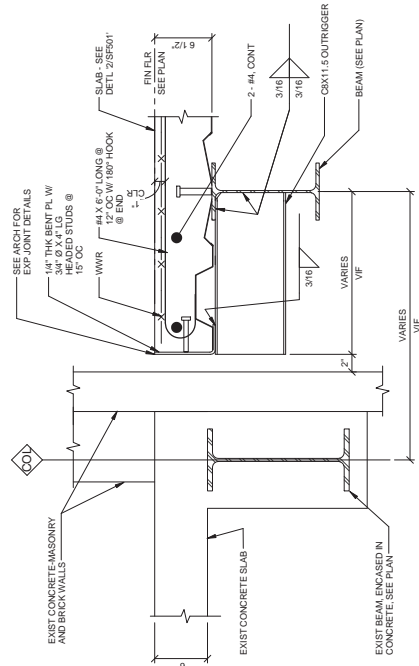
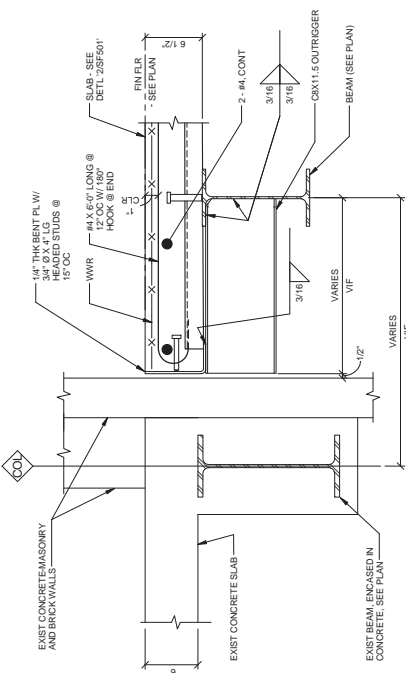
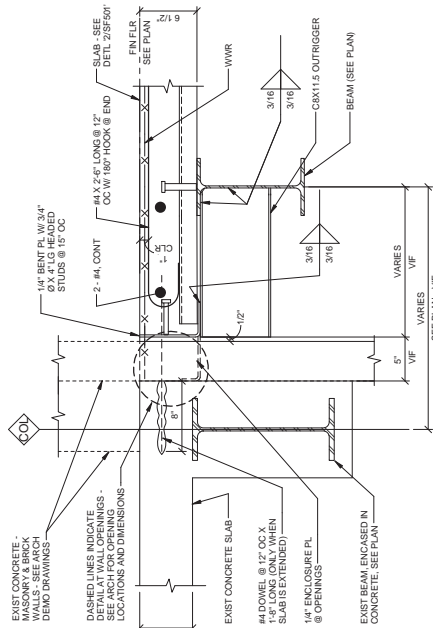
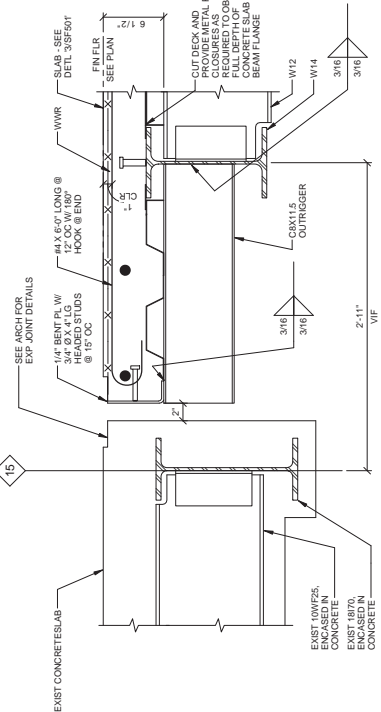
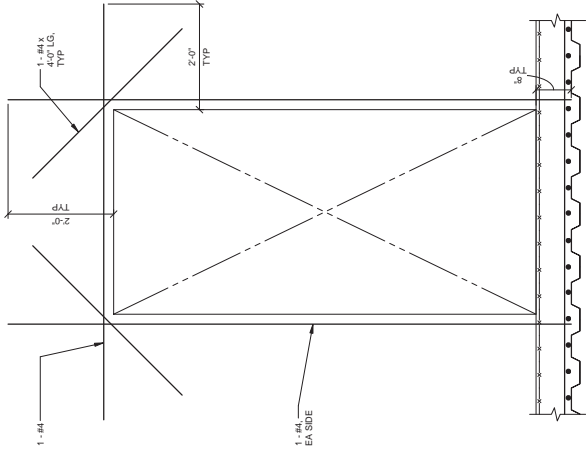
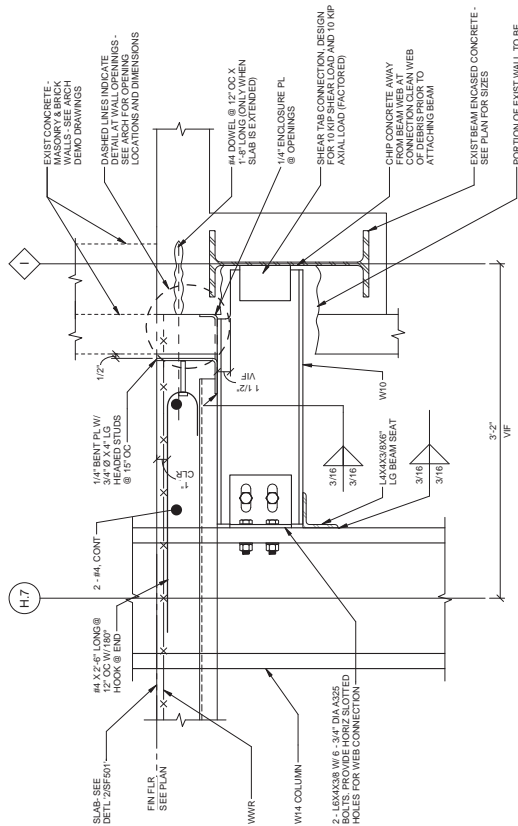




# CONSTRUCTION DOCUMENTS

## FULLY SPRINKLERED

Project Title DEPARTMENT OF VETERANS AFFAIRS BUILD OUT CLINICS		Project Number 506-327		Office of Construction and Facilities Management	
Drawing Title FRAMING DETAILS		Building Number 1-W		Department of Veterans Affairs	
Approved: GMC		Drawing Number SF501		Dwg. 22 of 189	
Location ANN ARBOR, MICHIGAN		Date 02/05/15		Checked GMC	
Architect/Engineers: <b>Kahn</b> Albert Kahn Associates, Inc. Detroit, Michigan 48202-2798 © 2007 ALBERT KAHN JOB # 0376240300		Key Plan AREA OF PROJECT		Revisions: ISSUE 004 - BID 02-05-15 ISSUE 003 - CD OWNER REVIEW 10-31-14 ISSUE 002 - CD OWNER REVIEW 05-30-14 DD - ESTIMATE 04-30-14	

[illegible]

ARCHITECT/ENGINEERS:



**Albert Kahn Associates, Inc.**  
Albert Kahn Building  
7430 Second Ave.  
Detroit, Michigan 48202-2798  
Albert Kahn Associates, Inc. is a member of  
the Albert Kahn Family of Companies.

© 2007  
**ALBERT KAHN JOB # 03192-KO-000**

MIDWESTERN CONSULTING



3815 Plaza Drive  
Ann Arbor, Michigan 48108  
Phone: 734.995.0200  
Fax 734.995.0599

3815 Plaza Drive  
Ann Arbor, Michigan 48108  
Phone: 734.995.0200  
Fax 734.995.0599

3815 Plaza Drive  
Ann Arbor, Michigan 48108  
Phone: 734.995.0200  
Fax 734.995.0599

Approved: \_\_\_\_\_

**Drawing Title**  
**FRAMING DETAILS**

**Project Title**  
**DEPARTMENT OF**  
**VETERANS AFFAIRS**  
**BUILD OUT CLINICS**

<b>Project Title</b>	<b>DEPARTMENT OF VETERANS AFFAIRS BUILD OUT CLINICS</b>
<b>Location</b>	<b>ANN ARBOR, MICHIGAN</b>

Project Title	DEPARTMENT OF VETERANS AFFAIRS BUILD OUT CLINICS		
Location	ANN ARBOR, MICHIGAN		
Date	02/06/15	Checked GWC	Drawn CK



VA FORM 08-6231VA FORM 08-6231

VA FORM 08-6231

VA FORM 08-6231

VA FORM 08-6231

VA FORM 08-6231

VA FORM 08-6231

## VA FORM 08-6231

VA FORM 08-6231

VA FORM 08-6231



VA FORM 08-6231

VA FORM 08-6231



VA FORM 08-6231

VA FORM 08-6231