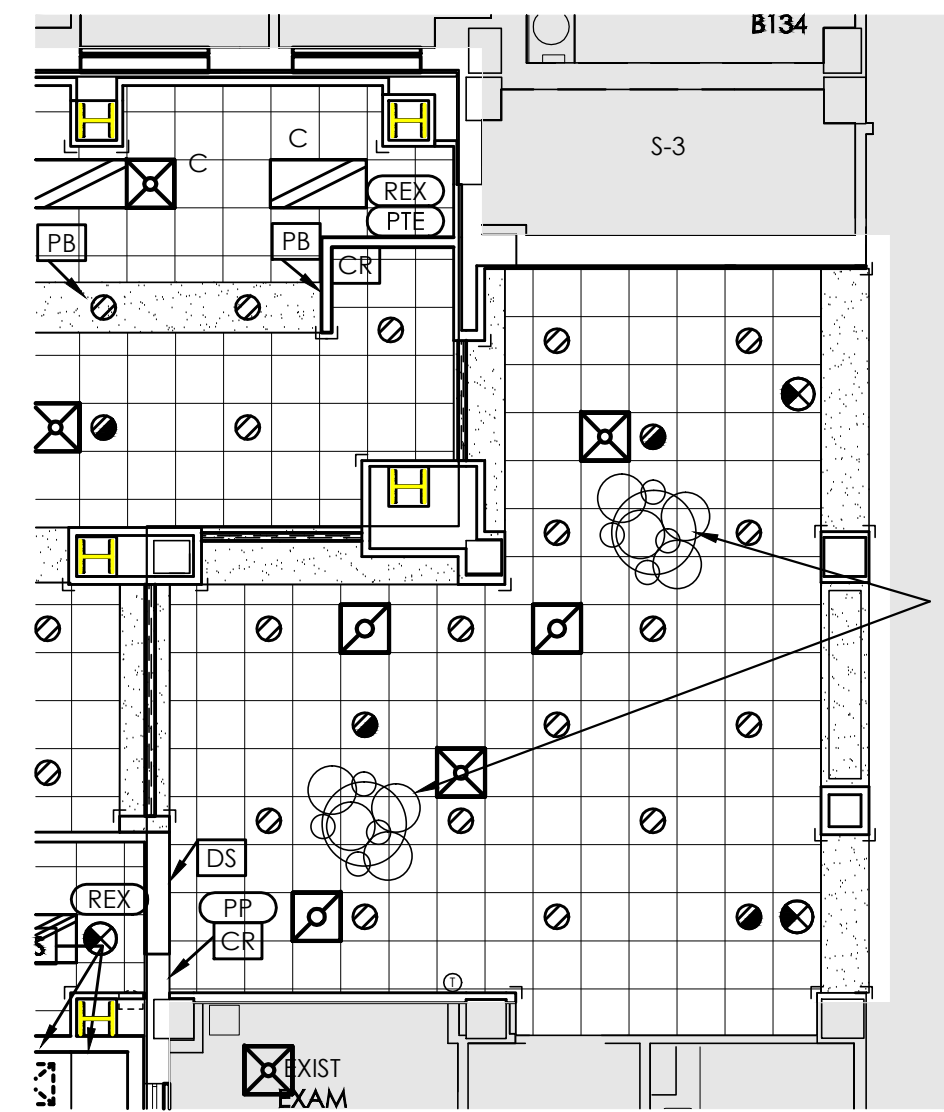


2

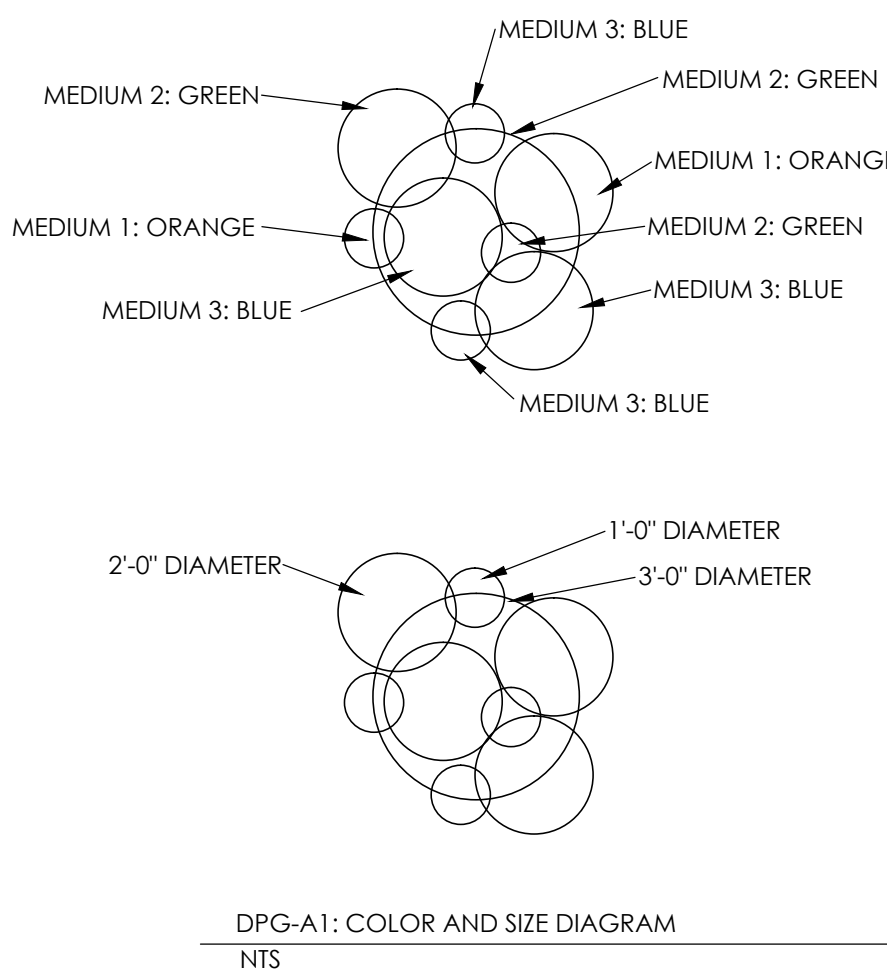
1/8" = 1'-0"

--	--	--	--	--	--	--	--	--	--	--	--	--	--	--	--	--	--	--	--	--	--	--	--	--	--	--	--	--	--	--	--	--	--	--	--	--	--	--	--	--	--	--	--	--	--	--	--	--	--	--	--	--	--	--	--	--	--	--	--	--	--	--	--	--	--	--	--	--	--	--	--	--	--	--	--	--	--	--	--	--	--	--	--	--	--	--	--	--	--	--	--	--	--	--	--	--	--	--	--	--	--	--	--	--	--	--	--	--	--	--	--	--	--	--	--	--	--	--	--	--	--	--	--	--	--	--	--	--	--	--	--	--	--	--	--	--	--	--	--	--	--	--	--	--	--	--	--	--	--	--	--	--	--	--	--	--	--	--	--	--	--	--	--	--	--	--	--	--	--	--	--	--	--	--	--	--	--	--	--	--	--	--	--	--	--	--	--	--	--	--	--	--	--	--	--	--	--	--	--	--	--	--	--	--	--	--	--	--	--	--	--	--	--	--	--	--	--	--	--	--	--	--	--	--	--	--	--	--	--	--	--	--	--	--	--	--	--	--	--	--	--	--	--	--	--	--	--	--	--	--	--	--	--	--	--	--	--	--	--	--	--	--	--	--	--	--	--	--	--	--	--	--	--	--	--	--	--	--	--	--	--	--	--	--	--	--	--	--	--	--	--	--	--	--	--	--	--	--	--	--	--	--	--	--	--	--	--	--	--	--	--	--	--	--	--	--	--	--	--	--	--	--	--	--	--	--	--	--	--	--	--	--	--	--	--	--	--	--	--	--	--	--	--	--	--	--	--	--	--	--	--	--	--	--	--	--	--	--	--	--	--	--	--	--	--	--	--	--	--	--	--	--	--	--	--	--	--	--	--	--	--	--	--	--	--	--	--	--	--	--	--	--	--	--	--	--	--	--	--	--	--	--	--	--	--	--	--	--	--	--	--	--	--	--	--	--	--	--	--	--	--	--	--	--	--	--	--	--	--	--	--	--	--	--	--	--	--	--	--	--	--	--	--	--	--	--	--	--	--	--	--	--	--	--	--	--	--	--	--	--	--	--	--	--	--	--	--	--	--	--	--	--	--	--	--	--	--	--	--	--	--	--	--	--	--	--	--	--	--	--	--	--	--	--	--	--	--	--	--	--	--	--	--	--	--	--	--	--	--	--	--	--	--	--	--	--	--	--	--	--	--	--	--	--	--	--	--	--	--	--	--	--	--	--	--	--	--	--	--	--	--	--	--	--	--	--	--	--	--	--	--	--	--	--	--	--	--	--	--	--	--	--	--	--	--	--	--	--	--	--	--	--	--	--	--	--	--	--	--	--	--	--	--	--	--	--	--	--	--	--	--	--	--	--	--	--	--	--	--	--	--	--	--	--	--	--	--	--	--	--	--	--	--	--	--	--	--	--	--	--	--	--	--	--	--	--	--	--	--	--	--	--	--	--	--	--	--	--	--	--	--	--	--	--	--	--	--	--	--	--	--	--	--	--	--	--	--	--	--	--	--	--	--	--	--	--	--	--	--	--	--	--	--	--	--	--	--	--	--	--	--	--	--	--	--	--	--	--	--	--	--	--	--	--	--	--	--	--	--	--	--	--	--	--	--	--	--	--	--	--	--	--	--	--	--	--	--	--	--	--	--	--	--	--	--	--	--	--	--	--	--	--	--	--	--	--	--	--	--	--	--	--	--	--	--	--	--	--	--	--	--	--	--	--	--	--	--	--	--	--	--	--	--	--	--	--	--	--	--	--	--	--	--	--	--	--	--	--	--	--	--	--	--	--	--	--	--	--	--	--	--	--	--	--	--	--	--	--	--	--	--	--	--	--	--	--	--	--	--	--	--	--	--	--	--	--	--	--	--	--	--	--	--	--	--	--	--	--	--	--	--	--	--	--	--	--	--	--	--	--	--	--	--	--	--	--	--	--	--	--	--	--	--	--	--	--	--	--	--	--	--	--	--	--	--	--	--	--	--	--	--	--	--	--	--	--	--	--	--	--	--	--	--	--	--	--	--	--	--	--	--	--	--	--	--	--	--	--	--	--	--	--	--	--	--	--	--	--	--	--	--	--	--	--	--	--	--	--	--	--	--	--	--	--	--	--	--	--	--	--	--	--	--	--	--	--	--	--	--	--	--	--	--	--	--	--	--	--	--	--	--	--	--	--	--	--	--	--	--	--	--	--	--	--	--	--	--	--	--	--	--	--	--	--	--	--	--	--	--	--	--	--	--	--	--	--	--	--	--	--	--	--	--	--	--	--	--	--	--	--	--	--	--	--	--	--	--	--	--	--	--	--	--	--	--	--	--	--	--	--	--	--	--	--	--	--	--	--	--	--	--	--	--	--	--	--	--	--	--	--	--	--	--	--	--	--	--	--	--	--	--	--	--	--	--	--	--	--	--	--	--	--	--	--	--	--	--	--	--	--	--	--	--	--	--	--	--	--	--	--	--	--	--	--	--	--	--	--	--	--	--	--	--	--	--	--	--	--	--	--	--	--	--	--	--	--	--	--	--	--	--	--	--	--	--	--	--	--	--	--	--	--	--	--	--	--	--	--	--	--	--	--	--	--	--	--	--	--	--	--	--	--	--	--	--	--	--	--	--	--	--	--	--	--	--	--	--	--	--	--	--	--	--	--	--	--	--	--	--	--	--	--	--	--	--	--	--	--	--	--	--	--	--	--	--	--	--	--	--	--	--	--	--	--	--	--	--	--	--	--	--	--	--	--	--	--	--	--	--	--	--	--	--	--	--	--	--	--	--	--	--	--	--	--	--	--	--	--	--	--	--	--	--	--	--	--	--	--	--	--	--	--	--	--	--	--	--	--	--	--	--	--	--	--	--	--	--	--	--	--	--	--	--	--	--	--	--	--	--	--	--	--	--	--	--	--	--	--	--	--	--	--	--	--	--	--	--	--	--	--	--	--	--	--	--	--	--	--	--	--	--	--	--	--	--	--	--	--	--	--	--	--	--	--	--	--	--	--	--	--	--	--	--	--	--	--	--	--	--	--	--	--	--	--	--	--	--	--	--	--	--	--	--	--	--	--	--	--	--	--	--	--	--	--	--	--	--	--	--	--	--	--	--	--	--	--	--	--	--	--	--	--	--	--	--	--	--	--	--	--	--	--	--	--	--	--	--	--	--	--	--	--	--

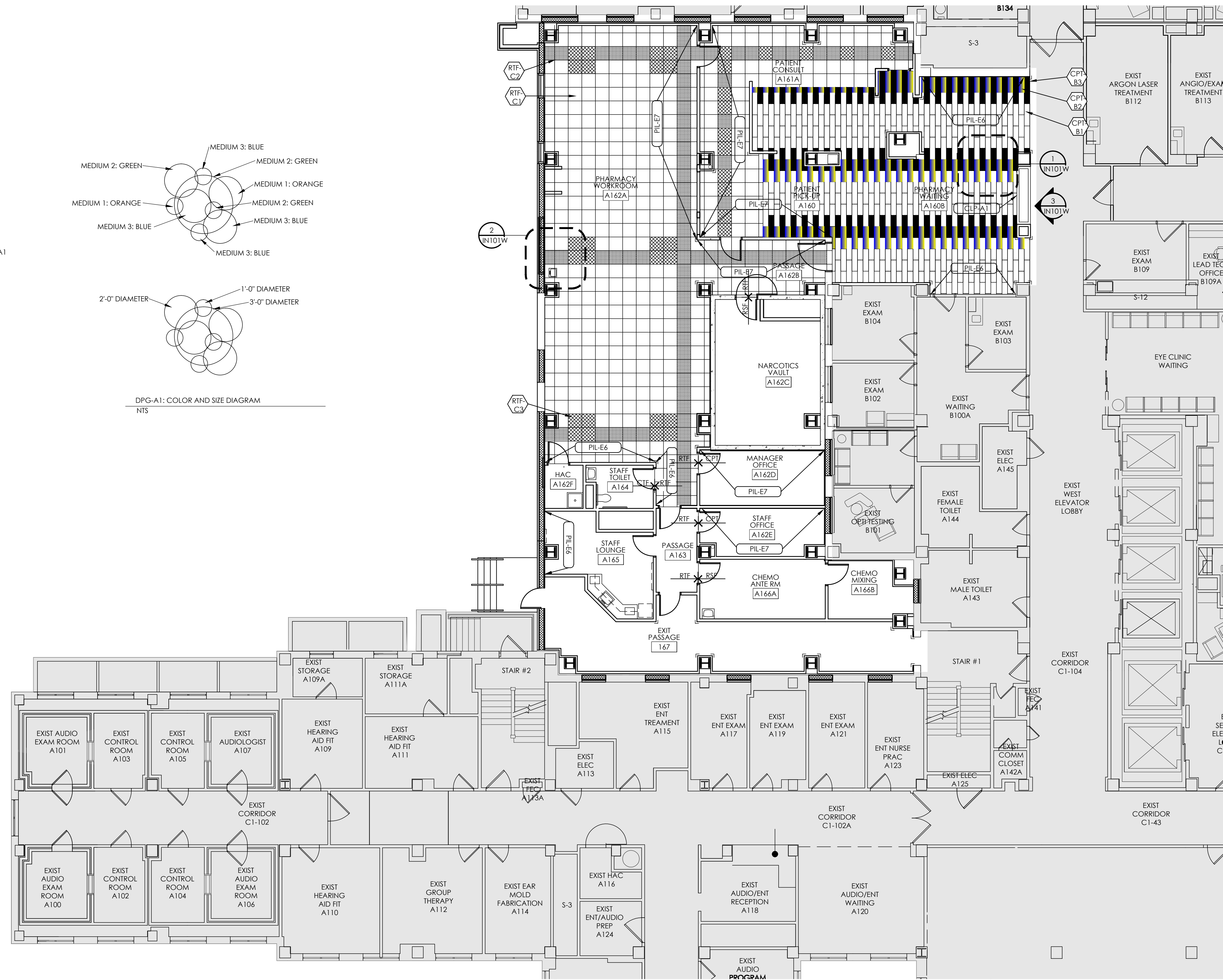
three inches = one foot  
one inch = one foot  
one and one half inches = one foot  
one inch = one foot  
three quarters inch = one foot  
one half inch = one foot  
three eighths inch = one foot  
one quarter inch = one foot  
one eighth inch = one foot



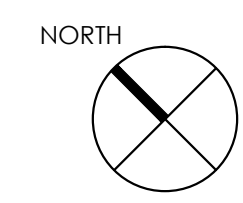
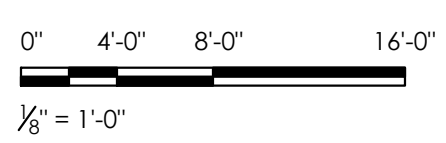
4 PHARMACY WAITING A160B RCP  
1/8" = 1'-0"



DPG-A1: COLOR AND SIZE DIAGRAM  
NTS

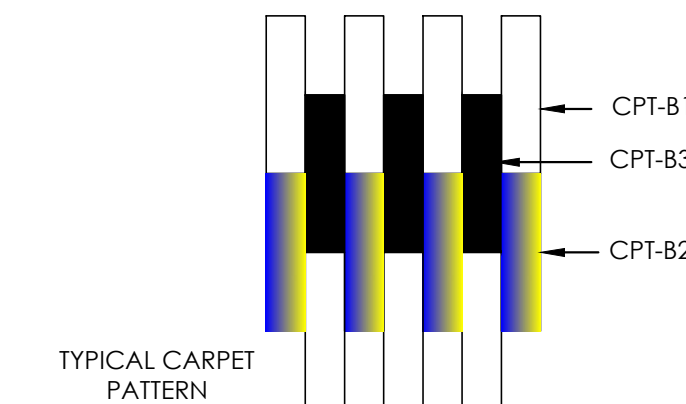


FIRST FLOOR INTERIOR FINISHES PLAN - WEST  
1/8" = 1'-0"

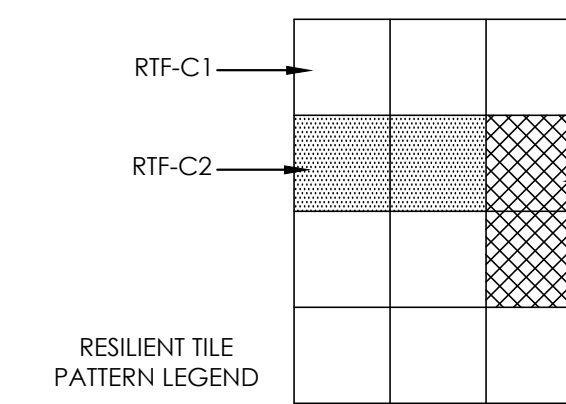


SYMBOL LEGEND	
	WALL MATERIAL
	WALL BASE
	FLOOR MATERIAL
	FLOOR TRANSITION
	CORNER GUARD
	WALL PROTECTION

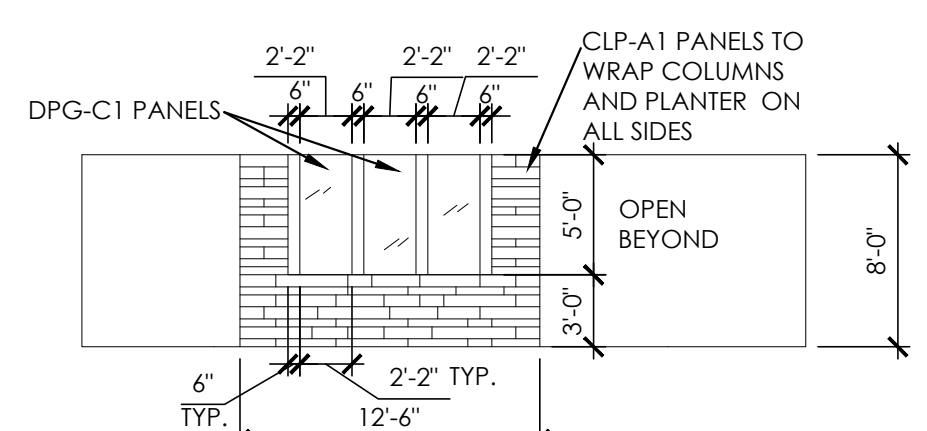
- GENERAL NOTES
- AREAS OF EXISTING CONSTRUCTION TO REMAIN UNLESS NOTED OTHERWISE
- WALL PROTECTION NOTES
- SEE SPEC SECTION: 10 2610 WALL AND CORNER GUARDS 10 2623.13 IMPACT-RESISTANT WALL PROTECTION
  - REFER TO FINISH DESIGNATIONS AND ROOM FINISH AND COLOR SCHEDULE
  - SEE THE AE SERIES DRAWINGS FOR DETAILS



1 PHARMACY WAITING A160B  
1/8" = 1'-0"

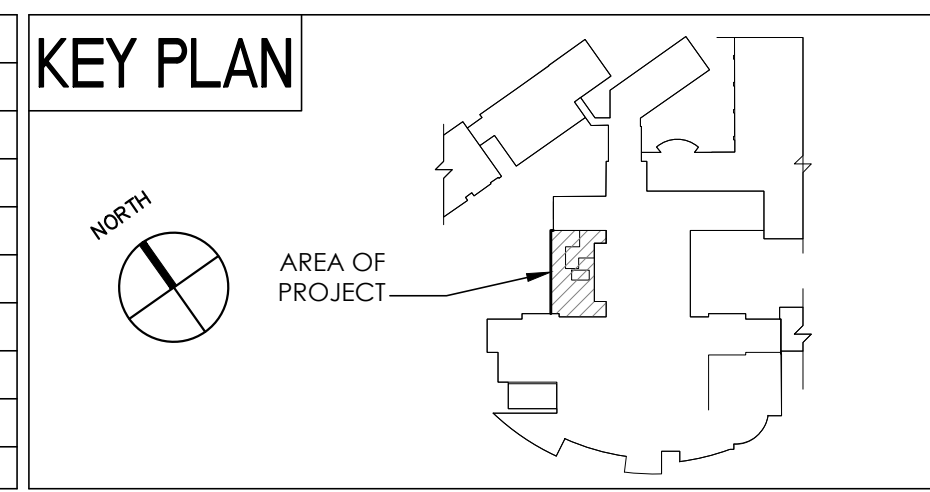


2 PHARMACY WORKROOM A162A  
1/8" = 1'-0"



3 PHARMACY PLANTER ELEVATION  
1/8" = 1'-0"

KEY PLAN	
	AREA OF PROJECT
ISSUE 004 - BID	02-05-15
ISSUE 003 - CD OWNER REVIEW	10-21-14
ISSUE 002 - DD OWNER REVIEW	05-30-14
Revisions:	Date



ARCHITECT/ENGINEERS:

**Kahn**

Albert Kahn Associates, Inc.  
Albert Kahn Building  
7430 Second Ave.  
Detroit, Michigan 48202-2798  
Albert Kahn Associates, Inc. is a member of the Albert Kahn Family of Companies. © 2007  
ALBERT KAHN JOB # 0392-K0.000

MIDWESTERN CONSULTING

**MC**

Civil, Environmental and Transportation Engineers  
Planners, Surveyors  
Landscape Architects

3815 Plaza Drive  
Ann Arbor, Michigan 48108  
Phone: 734.995.0200  
Fax 734.995.0599

Drawing Title  
FIRST FLOOR  
INTERIOR FINISHES PLAN - WEST

Approved  
K. JAPOWICZ

Project Title  
DEPARTMENT OF  
VETERANS AFFAIRS  
BUILD OUT CLINICS

Location  
ANN ARBOR, MICHIGAN

Date  
02-05-15

Checked  
CT

Drawn  
CAK

Project Number  
506-327

Building Number  
1-W

Drawing Number  
IN101W  
Dwg. 59 of 189

Office of  
Construction  
and Facilities  
Management

Department of  
Veterans Affairs

A  
three inches = one foot  
6"  
1  
one and one half inches = one foot  
6"  
2  
one inch = one foot  
6"  
3  
three quarters inch = one foot  
6"  
4  
one half inch = one foot  
6"  
5  
three eighths inch = one foot  
6"  
6  
one quarter inch = one foot  
6"  
7  
one eighth inch = one foot  
6"  
8  
one eighth inch = one foot  
6"  
9  
one eighth inch = one foot  
6"

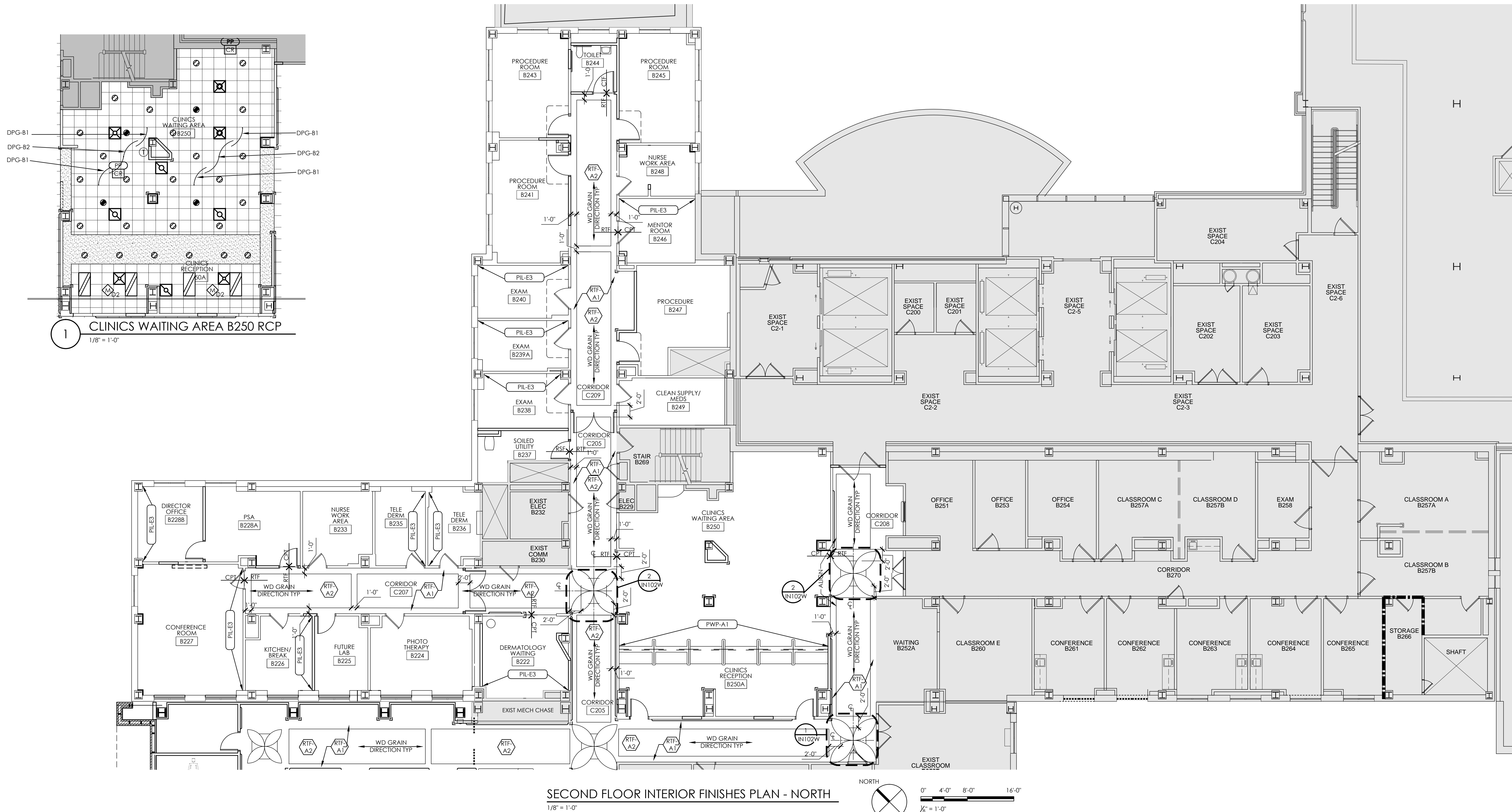
SYMBOL LEGEND	
	WALL MATERIAL
	WALL BASE
	FLOOR MATERIAL
	FLOOR TRANSITION
	CORNER GUARD
	WALL PROTECTION

GENERAL NOTES

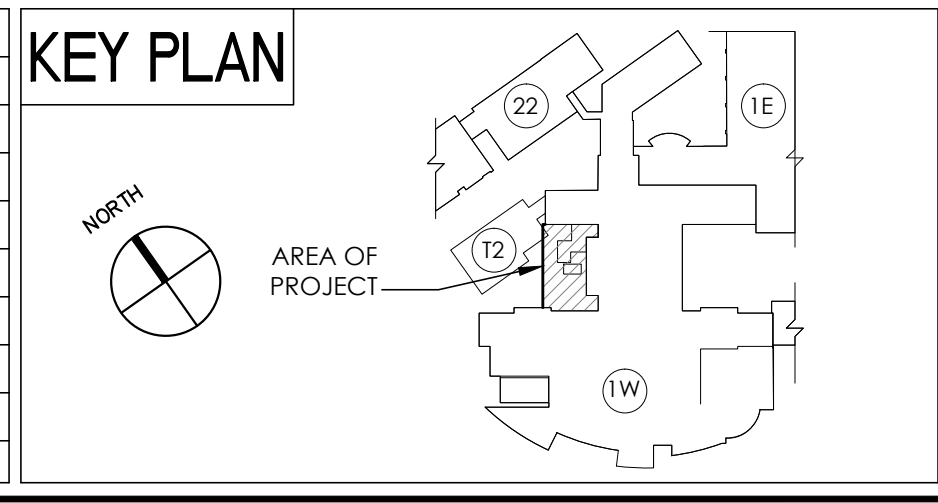
1. AREAS OF EXISTING CONSTRUCTION TO REMAIN UNLESS NOTED OTHERWISE

WALL PROTECTION NOTES

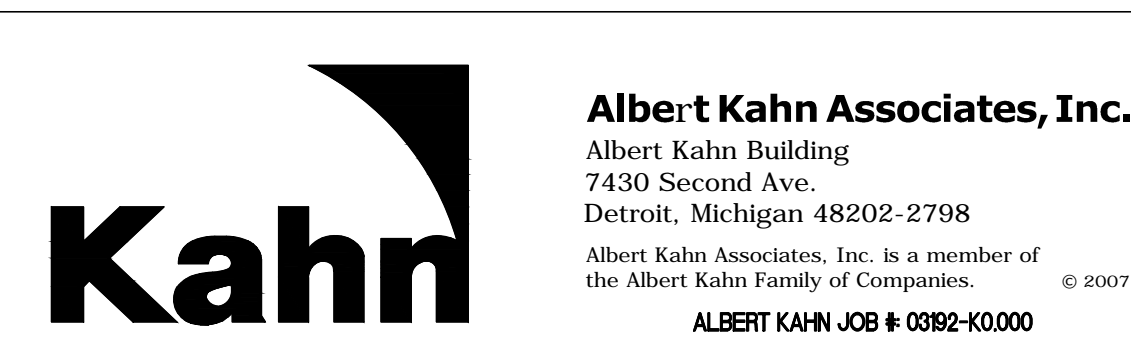
1. SEE SPEC SECTION:  
10 2610 WALL AND CORNER GUARDS  
10 2623.13 IMPACT-RESISTANT WALL PROTECTION  
2. REFER TO FINISH DESIGNATIONS AND ROOM FINISH AND COLOR SCHEDULE  
3. SEE THE AE SERIES DRAWINGS FOR DETAILS



ISSUE 004 - BID	02-05-15
ISSUE 003 - CD OWNER REVIEW	10-21-14
ISSUE 002 - DD OWNER REVIEW	05-30-14
Revisions:	Date



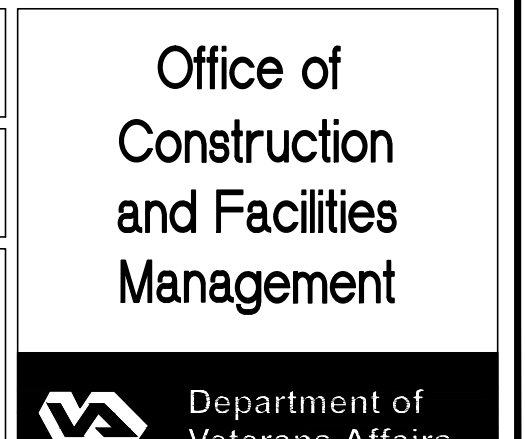
ARCHITECT/ENGINEERS:



Drawing Title	SECOND FLOOR INTERIOR FINISHES PLAN - NORTH
Approved:	K. JAPOWICZ

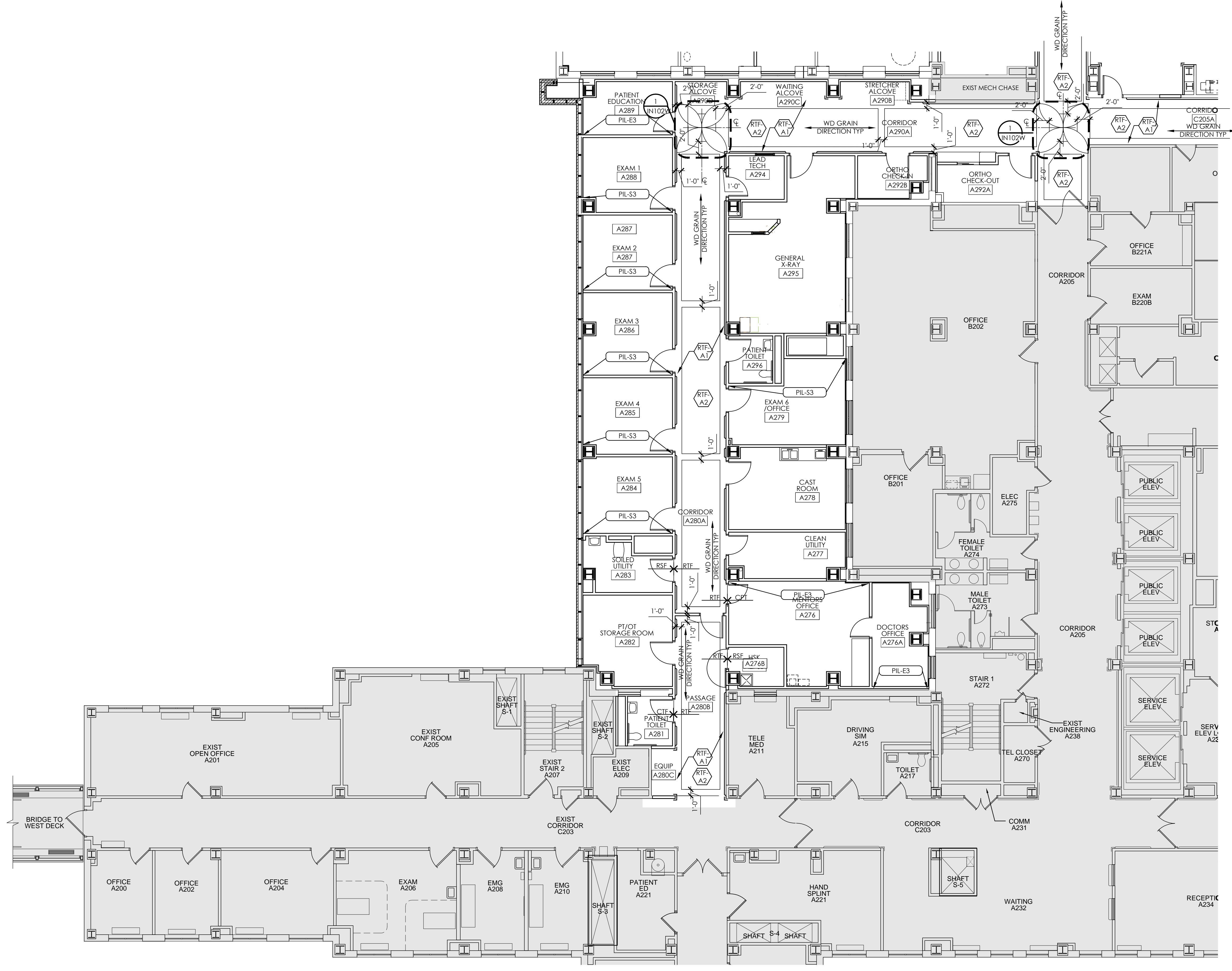
Project Title	DEPARTMENT OF VETERANS AFFAIRS BUILD OUT CLINICS
Location	ANN ARBOR, MICHIGAN
Date	02-05-15
Checked	CT
Drawn	CAK

Project Number	506-327
Building Number	1-W
Drawing Number	IN102N
Dwg. 60 of 189--	

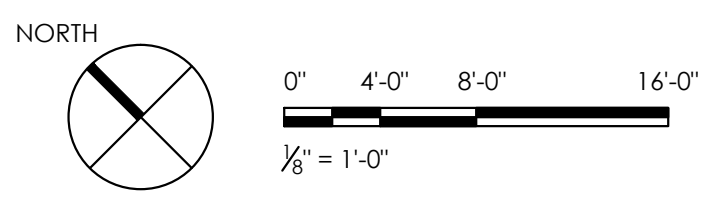


three inches = one foot  
one and one half inches = one foot  
one inch = one foot  
three quarters inch = one foot  
one half inch = one foot  
three eighths inch = one foot  
one quarter inch = one foot  
one eighth inch = one foot

1 2 3 4 5 6 7 8 9

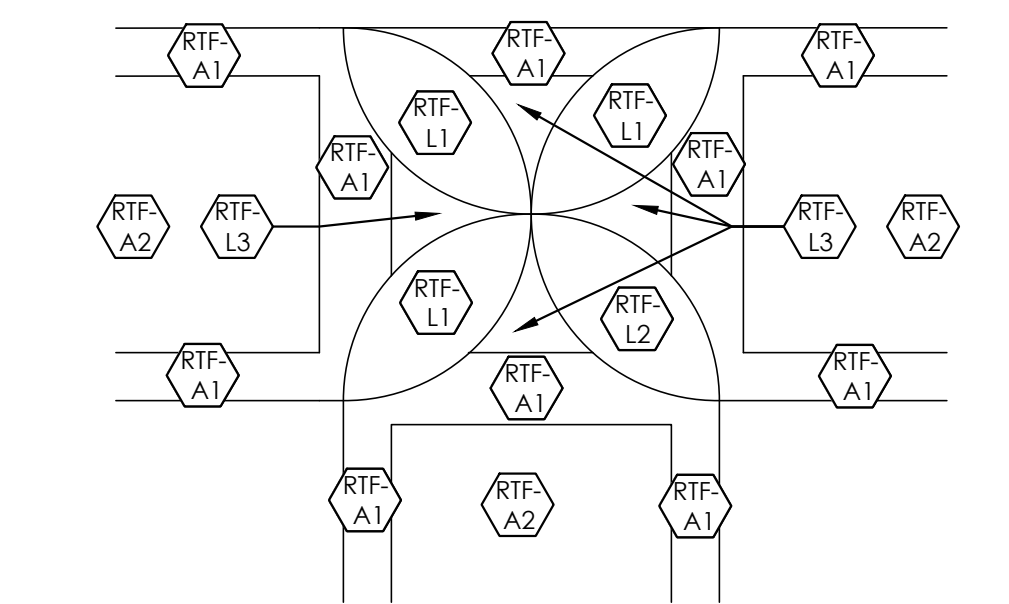


SECOND FLOOR INTERIOR FINISHES PLAN - WEST  
1/8" = 1'-0"

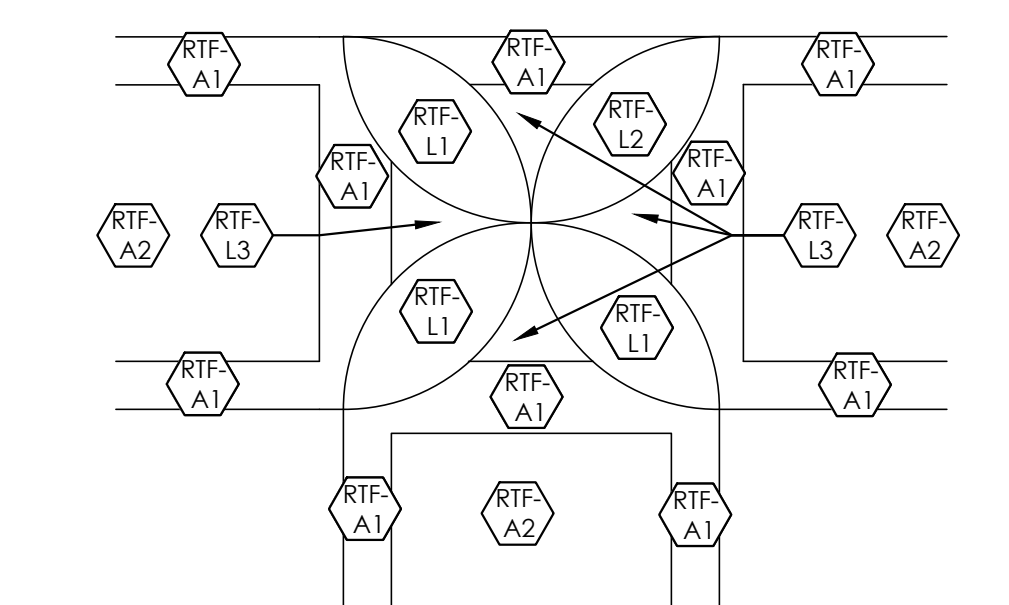


SYMBOL LEGEND	
	WALL MATERIAL
	WALL BASE
	FLOOR MATERIAL
	FLOOR TRANSITION
	CORNER GUARD
	WALL PROTECTION

- GENERAL NOTES
- AREAS OF EXISTING CONSTRUCTION TO REMAIN UNLESS NOTED OTHERWISE
- WALL PROTECTION NOTES
- SEE SPEC SECTION: 10 2610 WALL AND CORNER GUARDS
  - SEE 2623.13 IMPACT-RESISTANT WALL PROTECTION
  - REFER TO FINISH DESIGNATIONS AND ROOM FINISH AND COLOR SCHEDULE
  - SEE THE AE SERIES DRAWINGS FOR DETAILS



1 CORRIDOR A290A  
1/8" = 1'-0"



2 CORRIDOR C205  
1/8" = 1'-0"

<table><tr><td>ISSUE 004 - BID</td><td>02-05-15</td></tr><tr><td>ISSUE 003 - CD OWNER REVIEW</td><td>10-21-14</td></tr><tr><td>ISSUE 002 - DD OWNER REVIEW</td><td>05-30-14</td></tr><tr><td>Revisions:</td><td>Date</td></tr></table>	ISSUE 004 - BID	02-05-15	ISSUE 003 - CD OWNER REVIEW	10-21-14	ISSUE 002 - DD OWNER REVIEW	05-30-14	Revisions:	Date	<b>KEY PLAN</b> 	<b>ARCHITECT/ENGINEERS:</b>  <b>Albert Kahn Associates, Inc.</b> Albert Kahn Building 7430 Second Ave. Detroit, Michigan 48202-2798 Albert Kahn Associates, Inc. is a member of the Albert Kahn Family of Companies. © 2007 ALBERT KAHN JOB # 0392-K0000	<b>MIDWESTERN CONSULTING</b>  Civil, Environmental and Transportation Engineers Planners, Surveyors Landscape Architects 3815 Plaza Drive Ann Arbor, Michigan 48108 Phone: 734.995.0200 Fax 734.995.0599	<b>Drawing Title</b> SECOND FLOOR INTERIOR FINISHES PLAN - WEST <b>Approved:</b> K. JAPOWICZ	<b>Project Title</b> DEPARTMENT OF VETERANS AFFAIRS BUILD OUT CLINICS <b>Location</b> ANN ARBOR, MICHIGAN <b>Date</b> 02-05-15 <b>Checked</b> CT <b>Drawn</b> CAK	<b>Project Number</b> 506-327 <b>Building Number</b> 1-W <b>Drawing Number</b> IN102W Dwg. 61 of 189--	<b>Office of Construction and Facilities Management</b> 
ISSUE 004 - BID	02-05-15														
ISSUE 003 - CD OWNER REVIEW	10-21-14														
ISSUE 002 - DD OWNER REVIEW	05-30-14														
Revisions:	Date														

VA FORM 08-6231 1 2 3 4 5 6 7 8 9



A

B

C

D

E

F

F

A

B

C

D

E

F

F

ROOM FINISH AND COLOR SCHEDULE

ROOM NO.	ROOM NAME	SHEET NO.	FLOOR		BASE	WALLS			CLG	OPENING COLORS		MILLWORK		REMARKS
			CONC FINISH	APPLIED MATERIAL		TYPICAL MATERIAL	ACCENT			DOORS	FRAMES	COUNTERTOP	CABINETRY	
							MATERIAL	LOCATION						
BASEMENT - WEST														
AB92B	EMS STAFF OFFICE	IN100W	---	CPT-A1, CPT-A2	RBS-A1	PIL-E5	PIL-E9	SEE FINISH PLAN	APC-A1	WD-WT1	PIL-S1	---	---	
AB110	PASSAGE	IN100W	---	RTF-B1, RTF-B2	RBS-B1	PIL-E5	---	---	APC-A1	WD-WT1	PIL-S1	---	---	
AB111	VOL SERV CLOTHING RM	IN100W	---	RTF-B2	RBC-A1	PIL-E5	---	---	APC-A1	WD-WT1	PIL-S1	---	---	
AB112	VOL SERV CLOTHING RM	IN100W	---	RTF-B2	RBC-A1	PIL-E5	---	---	APC-A1	WD-WT1	PIL-S1	---	---	
AB113	VOL SERV BOOK RM	IN100W	---	RTF-B2	RBC-A1	PIL-E5	---	---	APC-A1	WD-WT1	PIL-S1	---	---	
AB114	HAC	IN100W	---	RSF-A1	RSF-A1, RMA-B2	PIL-E5	---	---	EXPOSED	WD-WT1	PIL-S1	---	---	
AB115	VOLUNTARY SERVICES LOUNGE / WK RM	IN100W	---	RTF-B2	RBC-A1	PIL-E5	PIL-E10	SEE FINISH PLAN	APC-A1	WD-WT1	PIL-S1	CN-SSFA-A1	CWC-PL1	
AB116	VOLUNTARY SERVICES CHIEF OFFICE	IN100W	---	CPT-A1, CPT-A2	RBS-A1	PIL-E5	PIL-E9	SEE FINISH PLAN	APC-A1	WD-WT1	PIL-S1	---	---	
AB117	VOLUNTARY SERVICES STAFF OFFICE	IN100W	---	CPT-A1, CPT-A2	RBS-A1	PIL-E5	PIL-E9	SEE FINISH PLAN	APC-A1	WD-WT1	PIL-S1	---	---	
AB118A	VOLUNTARY SERVICES CLOTHING ISSUE RM	IN100W	---	CPT-A1, CPT-A2	RBS-A1	PIL-E5	PIL-E10	SEE FINISH PLAN	APC-A1	WD-WT1	PIL-S1	---	---	
AB118B	CHANGING ROOM	IN100W	---	CPT-A1	RBS-A1	PIL-E5	---	---	APC-A1	WD-WT1	PIL-S1	---	---	
AB119	EMS BULK SUPPLIES	IN100W	---	RTF-A1	RBC-A1	PIL-E5	---	---	APC-A1	WD-WT1	PIL-S1	---	---	
AB120	CORRIDOR	IN100W	---	RTF-B1, RTF-B2	RBS-B1	PIL-E5	PIL-E9	SEE FINISH PLAN	APC-A1	WD-WT1	PIL-S1	---	---	
AB121	EMS CHEMICALS ROOM	IN100W	---	RSF-A1	RSF-A1, RMA-B1	PIL-E5	---	---	APC-A1	WD-WT1	PIL-S1	---	---	
AB122	EMS EQUIP ROOM	IN100W	---	RSF-A1	RSF-A1, RMA-B1	PIL-E5	---	---	APC-A1	WD-WT1	PIL-S1	---	---	
AB123	VOLUNTARY SERVICES SUPPLY ROOM	IN100W	---	RTF-B2	RBC-A1	PIL-E5	---	---	APC-A1	WD-WT1	PIL-S1	---	---	
AB124	VOLUNTARY SERVICES CRAFT ROOM	IN100W	---	RTF-B1	RBC-A1	PIL-E5	PIL-E10	SEE FINISH PLAN	APC-A1	WD-WT1	PIL-S1	---	---	
AB125	VOLUNTARY SERVICES STAFF OFFICE	IN100W	---	CPT-A1, CPT-A2	RBS-A1	PIL-E5	PIL-E9	SEE FINISH PLAN	APC-A1	WD-WT1	PIL-S1	---	---	
AB126	STAFF TRAINING	IN100W	---	CPT-A1	RBC-A1	PIL-E5	---	---	APC-A1	WD-WT1	PIL-S1	---	---	
AB127	VOL SERV CLOTHING RM	IN100W	---	RTF-B2	RBC-A1	PIL-E5	---	---	APC-A1	WD-WT1	PIL-S1	---	---	
BB130	CORRIDOR	IN100W	---	RTF-B1, RTF-B2	RBS-B1	PIL-E5	---	---	APC-A1	WD-WT1	PIL-S1	---	---	
FIRST FLOOR - WEST														
A160	PATIENT PICK UP	IN101W	---	CPT-B1, CPT-B2, CPT-B3	RBS-B1	PIL-E5	PIL-E7	SEE FINISH PLAN	APC-A1, PIL-E5	WD-WT1	PIL-S1	---	---	
A160B	PHARMACY WAITING	IN101W	---	CPT-B1, CPT-B2, CPT-B3	RBS-B1	PIL-E5	PIL-E6, CLP-A1, DPG-C1	SEE FINISH PLAN	APC-A1, PIL-E5	WD-WT1	PIL-S1	---	---	6
A161A	PATIENT CONSULT	IN101W	---	RTF-C1, RTF-C2, RTF-C3	RBC-A1	PIL-E5	PIL-E7	SEE FINISH PLAN	APC-A1, PIL-E5	WD-WT1	PIL-S1	---	---	
A162A	PHARMACY WORKROOM	IN101W	---	RTF-C1, RTF-C2, RTF-C3	RBC-A1	PIL-E5	PIL-E6, PIL-E7	SEE FINISH PLAN	APC-A1, PIL-E5	WD-WT1	PIL-S1	---	---	
A162B	PASSAGE	IN101W	---	RTF-C1, RTF-C2, RTF-C3	RBC-A1	PIL-E5	PIL-E7	SEE FINISH PLAN	APC-A1, PIL-E5	WD-WT1	PIL-S1	---	---	
A162C	NARCOTICS VAULT	IN101W	---	RSF-A1	RSF-A1, RMA-B1	PIL-E5	---	---	APC-A1	WD-WT1	PIL-S1	---	---	
A162D	MANAGER OFFICE	IN101W	---	CPT-B1	RBS-A1	PIL-E5	PIL-E7	SEE FINISH PLAN	APC-A1	WD-WT1	PIL-S1	---	---	
A162E	STAFF OFFICE	IN101W	---	CPT-B1	RBS-A1	PIL-E5	PIL-E7	SEE FINISH PLAN	APC-A1	WD-WT1	PIL-S1	---	---	
A162F	HAC	IN101W	---	RSF-A1	RSF-A1, RMA-B2	PIL-E5	---	---	APC-A1	WD-WT1	PIL-S1	---	---	
A163	PASSAGE	IN101W	---	RTF-B2	RBC-A1	PIL-E5	---	---	APC-A1	WD-WT1	PIL-S1	---	---	
A164	STAFF TOILET	IN101W	---	CTF-A1	CTB-A1	CTW-A1, CTW-B1 WAINSCOT	PIL-S3	ABOVE WAINSCOT	APC-A1	WD-WT1	PIL-S1	---	---	1, 2
A165	STAFF LOUNGE	IN101W	---	RTF-B2	RBC-A1	PIL-E5	PIL-E6	SEE FINISH PLAN	APC-A1	WD-WT1	PIL-S1	CN-SSFA-A1	CWC-PL1	
A166A	CHEMO ANTE RM	IN101W	---	RSF-A1	RSF-A1, RMA-B1	PIL-E5	---	---	APC-A1	WD-WT1	PIL-S1	---	---	
A166B	CHEMO MIXING	IN101W	---	RSF-A1	RSF-A1, RMA-B1	PIL-E5	---	---	APC-A1	WD-WT1	PIL-S1	---	---	
A167	EXIT PASSAGE	IN101W	---	MATCH EXISTING STAIR	MATCH EXISTING	PIL-E5	---	---	APC-A1	WD-WT1	PIL-S1	---	---	
SECOND FLOOR - WEST														
A276	MENTOR'S OFFICE	IN102W	---	CPT-C1	RBS-A1	PIL-E12	PIL-E3	SEE FINISH PLAN	APC-A1	WD-WT1	PIL-S1	---	---	
A276A	DOCTOR'S OFFICE	IN102W	---	CPT-C1	RBS-A1	PIL-E12	PIL-E3	SEE FINISH PLAN	APC-A1	WD-WT1	PIL-S1	---	---	
A276B	HSK	IN102W	---	RSF-A1	RSF-A1, RMA-B1	PIL-E12	---	---	APC-A1	WD-WT1	PIL-S1	---	---	
A277	CLEAN UTILITY	IN102W	---	RTF-A2	RBC-A1	PIL-E12	---	---	APC-A1	WD-WT1	PIL-S1	---	---	
A278	CAST ROOM	IN102W	---	RSF-A1	RSF-A1, RMA-B1	PIL-E12	---	---	APC-A1	WD-WT1	PIL-S1	---	CWC-PL1	
A279	EXAM 6/OFFICE	IN102W	---	RTF-A2	RBC-A1	PIL-E12	PIL-E3	SEE FINISH PLAN	APC-A1	WD-WT1	PIL-S1	---	---	
A280A	CORRIDOR	IN102W	---	RTF-A1, RTF-A2, RTF-L1, RTF-L2, RTF-L3	RBS-B1	PIL-E2	---	---	APC-A1	WD-WT1	PIL-S1	---	---	
A280B	PASSAGE	IN102W	---	RTF-A1, RTF-A2	RBC-B1	PIL-E2	---	---	APC-A1	WD-WT1	PIL-S1	---	---	
A280C	EQUIP	IN102W	---	RTF-A2	RBC-B1	PIL-E12	---	---	APC-A1	WD-WT1	PIL-S1	---	---	
A281	PATIENT TOILET	IN102W	---	CTF-A1	CTB-A1	RMA-B1, WAINSCOT	PIL-S3	ABOVE WAINSCOT	APC-A1	WD-WT1	PIL-S1	---	---	1, 2
A282	PT / OT STORAGE ROOM	IN102W	---	RTF-A2	RBC-A1	PIL-E12	---	---	APC-A1	WD-WT1	PIL-S1	---	---	
A283	SOILED UTILITY	IN102W	---	RSF-A1	RSF-A1, RMA-B1	PIL-E12	---	---	APC-A1	WD-WT1	PIL-S1	---	---	
A284	EXAM 5	IN102W	---	RTF-A2	RBC-A1	PIL-S12	PIL-S3	SEE FINISH PLAN	APC-A1	WD-WT1	PIL-S1	---	---	
A285	EXAM 4	IN102W	---	RTF-A2	RBC-A1	PIL-S12	PIL-S3	SEE FINISH PLAN	APC-A1	WD-WT1	PIL-S1	---	---	
A286	EXAM 3	IN102W	---	RTF-A2	RBC-A1	PIL-S12	PIL-S3	SEE FINISH PLAN	APC-A1	WD-WT1	PIL-S1	---	---	
A287	EXAM 2	IN102W	---	RTF-A2	RBC-A1	PIL-S12	PIL-S3	SEE FINISH PLAN	APC-A1	WD-WT1	PIL-S1	---	---	
A288	EXAM 1	IN102W	---	RTF-A2	RBC-A1	PIL-S12	PIL-S3	SEE FINISH PLAN	APC-A1	WD-WT1	PIL-S1	---	---	
A289	PATIENT EDUCATION	IN102W	---	RTF-A2	RBC-A1	PIL-S12	PIL-S3	SEE FINISH PLAN	APC-A1	WD-WT1	PIL-S1	---	---	
A290A	CORRIDOR	IN102W	---	RTF-A1, RTF-A2, RTF-L1, RTF-L2, RTF-L3	RBS-B1	PIL-E2	---	---	APC-A1, PIL-E2	WD-WT1	PIL-S1	---	---	
A290B	STRETCHER ALCOVE	IN102W	---	RTF-A1, RTF-A2	RBS-B1	PIL-E2	---	---	APC-A1	WD-WT1	PIL-S1	---	---	
A290C	WAITING ALCOVE	IN102W	---	RTF-A1, RTF-A2	RBS-B1	PIL-E2	---	---	APC-A1	WD-WT1	PIL-S1	---	---	
A290D	STORAGE ALCOVE	IN102W	---	RTF-A1, RTF-A2	RBS-B1	PIL-E2	---	---	APC-A1	WD-WT1	PIL-S1	---	---	
A292A	ORTHO CHECK-OUT	IN102W	---	RTF-A2	RBC-A1	PIL-E12	---	---	APC-A1, PIL-E2	WD-WT1	PIL-S1	CN-SSFA-A2	---	
A292B	ORTHO CHECK-IN	IN102W	---	RTF-A2	RBC-A1	PIL-E12	---	---	APC-A1	WD-WT1	PIL-S1	---	---	
A294	LEAD TECH	IN102W	---	RTF-A2	RBC-A1	PIL-E12	---	---	APC-A1	WD-WT1	PIL-S1	---	---	
A295	GENERAL X-RAY	IN102W	---	RTF-A2	RBC-A1	PIL-E12	---	---	APC-A1	WD-WT1	PIL-S1	---	---	
A296	PATIENT TOILET	IN102W	---	CTF-A1	CTB-A1	CTW-A1, CTW-B1 WAINSCOT	PIL-S3	ABOVE WAINSCOT	APC-A1	WD-WT1	PIL-S1	---	---	1, 2

ROOM FINISH AND COLOR SCHEDULE														
ROOM NO.	ROOM NAME	SHEET NO.	FLOOR		BASE	WALLS			CLG	OPENING COLORS		MILLWORK		REMARKS
			CONC FINISH	APPLIED MATERIAL		TYPICAL MATERIAL	ACCENT			DOORS	FRAMES	COUNTERTOP	CABINETRY	
							MATERIAL	LOCATION						
SECOND FLOOR - NORTH														
B222	DERMATOLOGY WAITING	IN102N	---	CPT-C1	RBS-B1	PIL-E2	PIL-E3	SEE FINISH PLAN	APC-A1	WD-WT1	PIL-S1	---	---	
B224	PHOTO THERAPY	IN102N	---	RTF-A2	RBC-A1	PIL-E12	---	---	APC-A1	WD-WT1	PIL-S1	---	---	
B225	FUTURE LAB	IN102N	---	RTF-A2	RBC-A1	PIL-E12	---	---	APC-A1	WD-WT1	PIL-S1	---	---	
B226	KITCHEN/BREAK	IN102N	---	RTF-A2	RBC-A1	PIL-E12	PIL-E3	SEE FINISH PLAN	APC-A1	---	---	---	---	
B227	CONFERENCE ROOM	IN102N	---	CPT-C1	RBS-A1	PIL-E12	PIL-E3	SEE FINISH PLAN	APC-A1	WD-WT1	PIL-S1	---	---	
B228A	PSA	IN102N	---	CPT-C1	RBS-A1	PIL-E12	---	---	APC-A1	WD-WT1	PIL-S1	---	---	
B228B	DIRECTOR OFFICE	IN102N	---	CPT-C1	RBS-A1	PIL-E12	PIL-E3	SEE FINISH PLAN	APC-A1	WD-WT1	PIL-S1	---	---	
B233	NURSE WORK AREA	IN102N	---	RTF-A2	RBC-A1	PIL-E12	---	---	APC-A1	WD-WT1	PIL-S1	---	---	
B235	TELE DERM	IN102N	---	RTF-A2	RBC-A1	PIL-E12	PIL-E3	SEE FINISH PLAN	APC-A1	WD-WT1	PIL-S1	---	---	
B236	TELE DERM	IN102N	---	RTF-A2	RBC-A1	PIL-E12	PIL-E3	SEE FINISH PLAN	APC-A1	WD-WT1	PIL-S1	---	---	
B237	SOILED UTILITY	IN102N	---	RSF-A1	RSF-A1, RMA-B1	PIL-E12	---	---	APC-A1	WD-WT1	PIL-S1	---	---	
B238	EXAM	IN102N	---	RTF-A2	RBC-A1	PIL-S12	PIL-S3	SEE FINISH PLAN	APC-A1	WD-WT1	PIL-S1	---	---	
B239A	EXAM	IN102N	---	RTF-A2	RBC-A1	PIL-S12	PIL-S3	SEE FINISH PLAN	APC-A1	WD-WT1	PIL-S1	---	---	
B240	EXAM	IN102N	---	RTF-A2	RBC-A1	PIL-S12	PIL-S3	SEE FINISH PLAN	APC-A1	WD-WT1	PIL-S1	---	---	
B241	PROCEDURE ROOM	IN102N	---	RSF-A1	RSF-A1, RMA-B1	PIL-S12	---	---	APC-A1	WD-WT1	PIL-S1	---	---	
B243	PROCEDURE ROOM	IN102N	---	RSF-A1	RSF-A1, RMA-B1	PIL-S12	---	---	APC-A1	WD-WT1	PIL-S1	---	---	
B244	TOILET	IN102N	---	CTF-A1	CTB-A1	CTW-A1, CTW-B1 WAINSCOT	PIL-S3	ABOVE WAINSCOT	APC-A1	WD-WT1	PIL-S1	---	---	1,2
B245	PROCEDURE ROOM	IN102N	---	RSF-A1	RSF-A1, RMA-B1	PIL-S12	---	---	APC-A1	WD-WT1	PIL-S1	---	---	
B246	MENTOR ROOM	IN102N	---	CPT-C1	RBS-A1	PIL-E12	PIL-E3	SEE FINISH PLAN	APC-A1	WD-WT1	PIL-S1	---	---	
B247	PROCEDURE	IN102N	---	RSF-A1	RSF-A1, RMA-B1	PIL-S12	---	---	APC-A1	WD-WT1	PIL-S1	---	---	
B248	NURSE WORK AREA	IN102N	---	RTF-A2	RBC-A1	PIL-E12	---	---	APC-A1	WD-WT1	PIL-S1	---	---	
B249	CLEAN SUPPLY/MEDS	IN102N	---	RTF-A2	RBC-A1	PIL-E12	---	---	APC-A1	WD-WT1	PIL-S1	---	---	
B250A	CLINICS RECEPTION	IN102N	---	CPT-C1	RBS-A1	PIL-E12	PWP-A1, EPG-A1	AT WINDOW	APC-A1, PIL-E2	WD-WT1	PIL-S1	CN-SSFA-A2	---	3, 4, 5
B250	CLINICS WAITING AREA	IN102N	---	CPT-C1	RBS-A1	PIL-E2	PWP-A1, EPG-A1	AT WINDOW	APC-A1, PIL-E2	WD-WT1	PIL-S1	---	---	3, 4, 5
C205	CORRIDOR	IN102N	---	RTF-A1, RTF-A2, RTF-L1, RTF-L2, RTF-L3	RBS-B1	PIL-E2	---	---	APC-A1, PIL-E2	WD-WT1	PIL-S1	---	---	
C207	CORRIDOR	IN102N	---	RTF-A1, RTF-A2, RTF-L1, RTF-L2, RTF-L3	RBS-B1	PIL-E2	---	---	APC-A1	WD-WT1	PIL-S1	---	---	
C208	CORRIDOR	IN102N	---	RTF-A1, RTF-A2, RTF-L1, RTF-L2, RTF-L3	RBS-B1	PIL-E2	---	---	APC-A1	WD-WT1	PIL-S1	---	---	
C209	CORRIDOR	IN102N	---	RTF-A1, RTF-A2, RTF-L1, RTF-L2, RTF-L3	RBS-B1	PIL-E2	---	---	APC-A1	WD-WT1	PIL-S1	---	---	